



---

# CUSTODY DIVISION POPULATION QUARTERLY REPORT

*July - September 2025*

Los Angeles County Sheriff's Department

---

*Robert G. Luna, Sheriff*

---

# **TABLE OF CONTENTS**

Executive Summary.....	3
1. Population Trends.....	4
Los Angeles County Inmate Population Graph	
Monthly Average Daily Inmate Population (ADIP) Trend	
Arrests, Bookings, and Releases	
Release Practices	
Proposition 36 In-Custody Population	
Homeless and Veteran	
2. Facilities Overview.....	11
Rated Capacities - Board of State and Community Corrections (BSCC)	
Jail Housing Facilities	
Men's Central Jail (MCJ)	
Twin Towers Correctional Facility (TTCF)	
Century Regional Detention Facility (CRDF)	
Pitchess Detention Center (PDC) – East	
Pitchess Detention Center (PDC) – North	
Pitchess Detention Center (PDC) – South	
North County Correctional Facility (NCCF)	
3. Population Overview.....	18
Inmate Population Demographics	
Inmate Population Offender Age Groups	
Jail Population by Security Level	
Inmate Population Breakdown	
Crime Classification Statistics	
Inmates with M7 (Assaultive Charges)	
No Cases Adjudicated	
No Cases Adjudicated Misdemeanor Population	
Mental Health Inmate Population	
Misdemeanor Incompetent to Stand Trial (MIST)	
Americans with Disabilities Act (ADA)	
Medical Housing	
4. In-Custody Programs.....	31
Credit Earnings	
Conservation Work Program (CWP)	
Education Based Incarceration Program (EBI-Milestone)	
Fire Camp Training Program	
California Department of Corrections and Rehabilitation (CDCR) Fire Camp Program	
In-Custody Substance Treatment and Reentry Transition (START) Program	

5. Alternatives to Custody (ATC) Programs.....	35
Community Transition Unit (CTU)	
Substance Treatment and Reentry Transition (START)	
Specialized Treatment for Optimized Programming (STOP)	
Community Based Alternatives to Custody (CBAC)	
Los Angeles County ATC Inmate Population Graph	
6. Re-Entry Assistance.....	39
Community Re-Entry and Resource Center (CRRC)	
CTU Coordinated Releases to Various Programs	
CTU Vital Records	

## **EXECUTIVE SUMMARY**

The Los Angeles County Sheriff's Department (Department) is committed to maintaining a secure and constitutional jail system. As part of this effort, a periodic report is essential to better understand and quantify population trends. This ***Custody Division Population Quarterly Report*** summarizes data collected during the third quarter of 2025 and is produced by the Population Management Bureau (PMB) Analysis Unit.

The Average Daily Inmate Population (ADIP) in the Los Angeles County (County) jail system during the third quarter of 2025 was 13,243. This is higher than the third quarter of 2024 average of 12,756.

To manage the inmate population, the Department continued to use percentage release. The short sentence releases have remained at 240 days since July 24, 2022. Inmates serving traditional county sentences completed 10 percent of their court ordered sentences. Inmates serving sentences for felony serious and/or violent offenses (M7 charges) served 100 percent of their sentences, minus any time credits earned. Inmates sentenced under 1170 PC (AB109) served 100 percent of their sentences, minus any time credits earned.

On October 1, 2023, Pre-Arrestment Release Protocols (PARP) were initiated for arrestees with non-violent, non-serious felonies and misdemeanors. PARP has diverted many arrestees that would have otherwise entered the county jail system.

Proposition 36, known as The Homelessness, Drug Addiction, and Theft Reduction Act, took effect on December 18, 2024. This modified existing laws and added substantive charges and enhancements to areas of the Penal Code and Health and Safety Code regarding theft, property damage, and drug-related crimes. The Superior Court of California issued an addendum making some of the charges Magistrate Review (MR), which will result in more inmates being held in the county jail.

The Traditional County Sentenced (TCS) population this quarter was approximately 905, lower than last quarter's total of 992. The number of inmates sentenced under 1170 PC was approximately 990, which is higher than last quarter's total of 943.

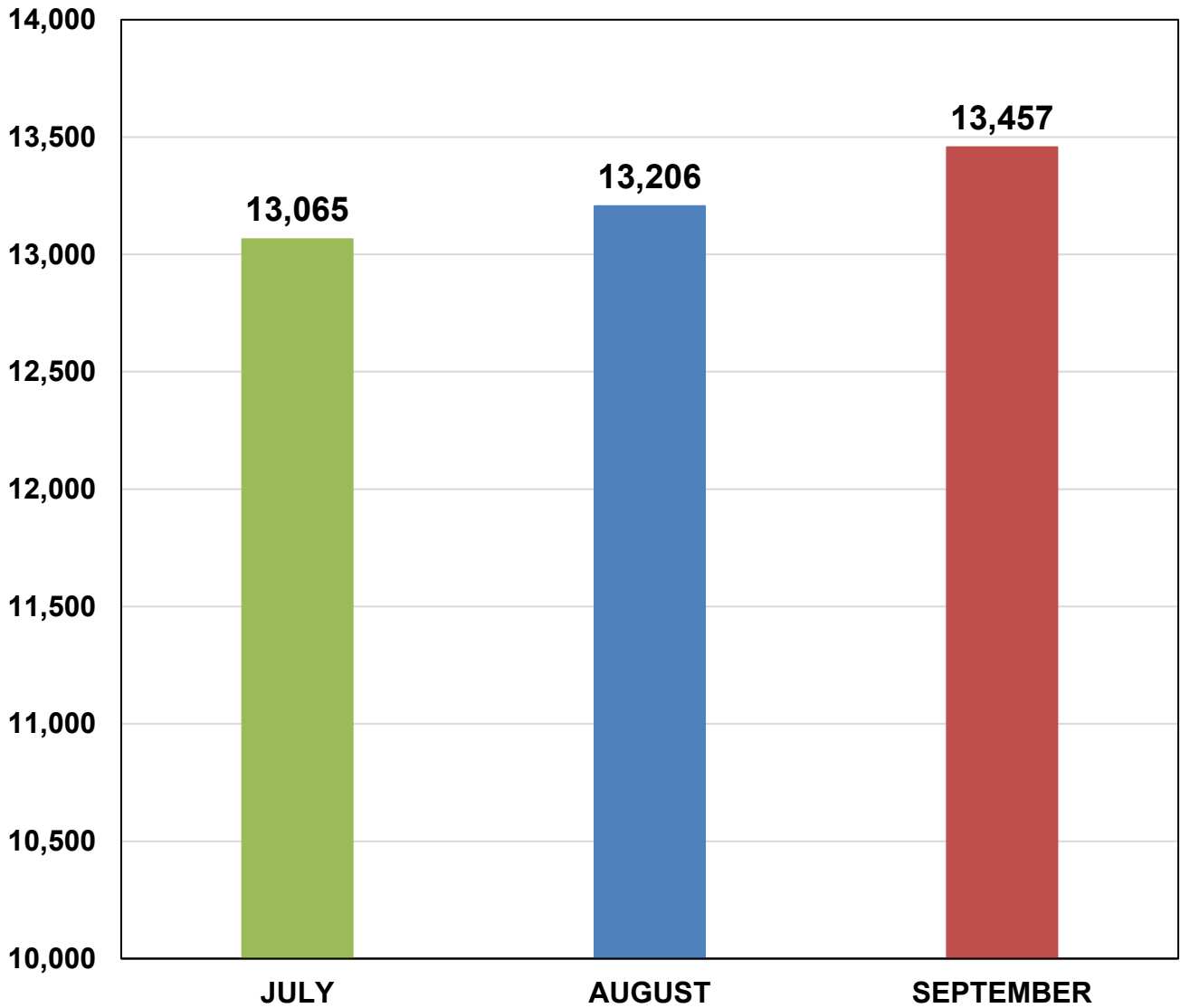
The mental health population increased from 6,044 last quarter to 6,347 this quarter and comprised 48 percent of the total inmate population. During the third quarter of 2024, the mental health population was 5,631 and comprised 44 percent of the total inmate population.

*Information encompassed in this report/document depicts data related to a specific date and time. Data may differ based on numerous factors related to an inmate's status, disposition, facility, etc. Information may differ based on systems queried, archived information, date/time parameters or numerous other factors. Information in disparate reports should not be combined as data sets may be inconsistent in queries and responses.*

# POPULATION TRENDS

**LASD INMATE POPULATION**

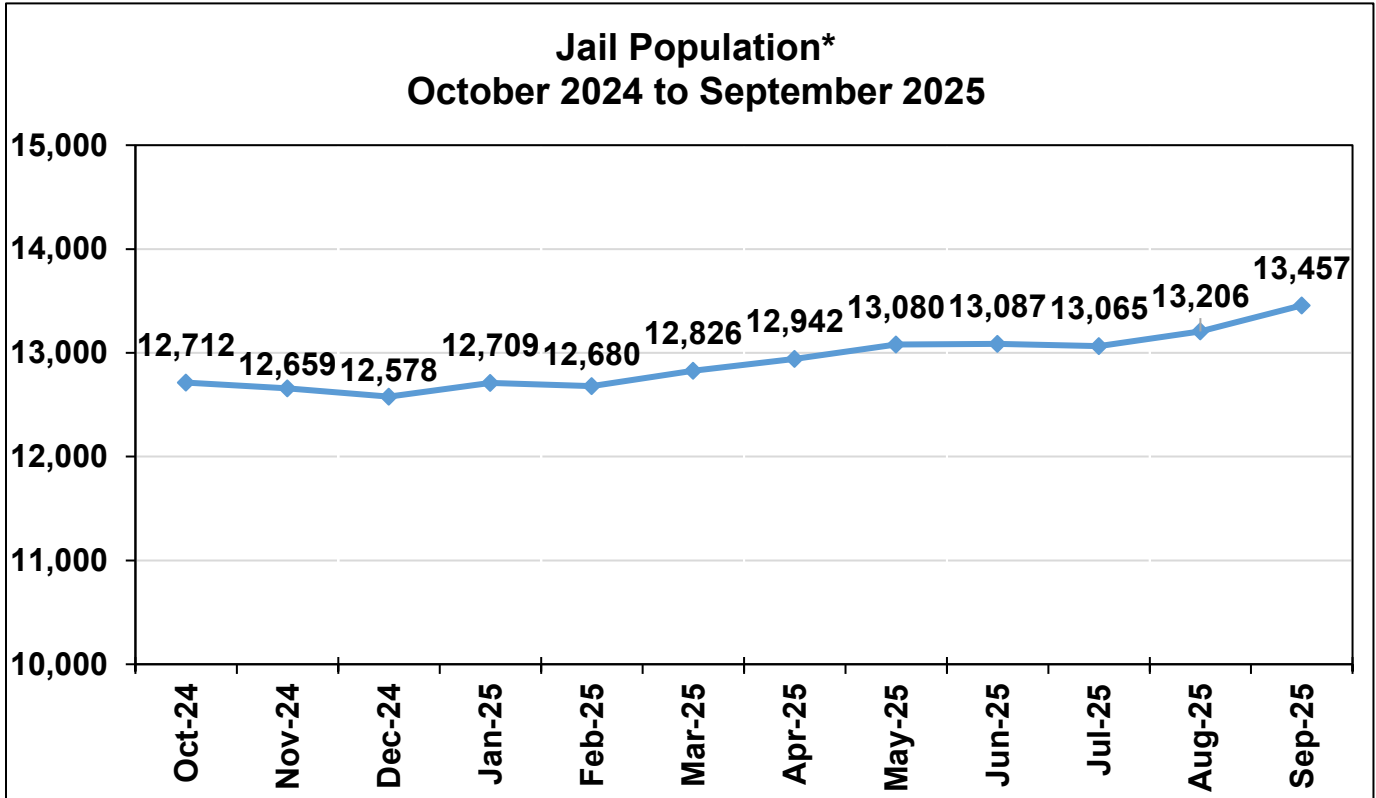
**Third Quarter 2025  
Los Angeles County Overall Inmate Count**



<b>2025 Quarterly Overall Division Average Daily Inmate Population (ADIP) *</b>
<b>13,243</b>

\*Quarterly Division ADIP reflects all inmates processed into IRC, excluding ATC.

## MONTHLY ADIP TREND



Yearly ADIP Comparison		
Year	ADIP	Notes
2011	15,014	(October - AB109 enacted)
2012	18,043	
2013	18,687	
2014	18,681	(November - Prop 47)
2015	17,049	
2016	16,613	
2017	17,024	
2018	16,910	
2019	17,070	
2020	14,212	(March - COVID-19, June - Zero Bail enacted)
2021	14,577	
2022	13,807	(June - Zero Bail ended)
2023	13,241	(May - Zero Bail enacted, October - PARP enacted)
2024	12,561	(December - Prop 36)
2025	13,006	Data collected through September 2025

\*Excludes Alternatives to Custody

## THIRD QUARTER 2025 - ARREST AND BOOKING STATS

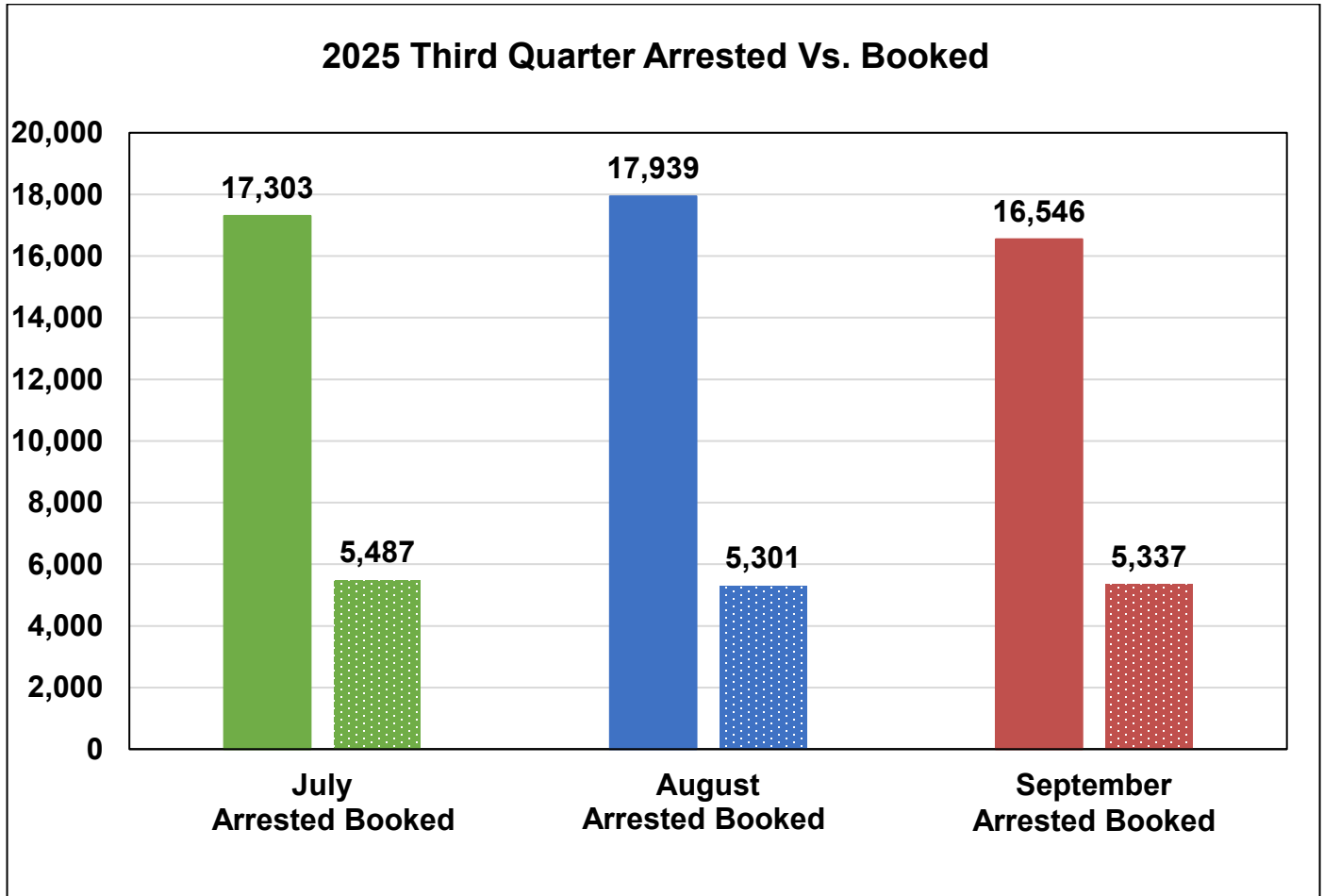
Arrest activity increased 5% to 51,788 versus the last quarter (49,367). The number of inmates booked into the County jail this quarter increased 6% to 16,125 versus last quarter (15,211).

	July		August		September		Quarterly Total	Quarterly Average	Quarterly %
	Monthly Total	%	Monthly Total	%	Monthly Total	%			
<b>Felony</b>	8,414	49%	8,520	48%	8,046	49%	24,980	8,327	48%
<b>Misdemeanor</b>	8,815	51%	9,355	52%	8,452	51%	26,622	8,874	52%
<b>Other*</b>	74	0%	64	0%	48	0%	186	62	0%
<b>Total Arrested</b>	<b>17,303</b>		<b>17,939</b>		<b>16,546</b>		<b>51,788</b>	<b>17,263</b>	<b>100%</b>
<b>Total Booked into LA County</b>	<b>5,487</b>	<b>32%</b>	<b>5,301</b>	<b>30%</b>	<b>5,337</b>	<b>32%</b>	<b>16,125</b>	<b>5,375</b>	<b>31%</b>

\*Other includes child welfare, delinquent, infraction, and non-specific charges.

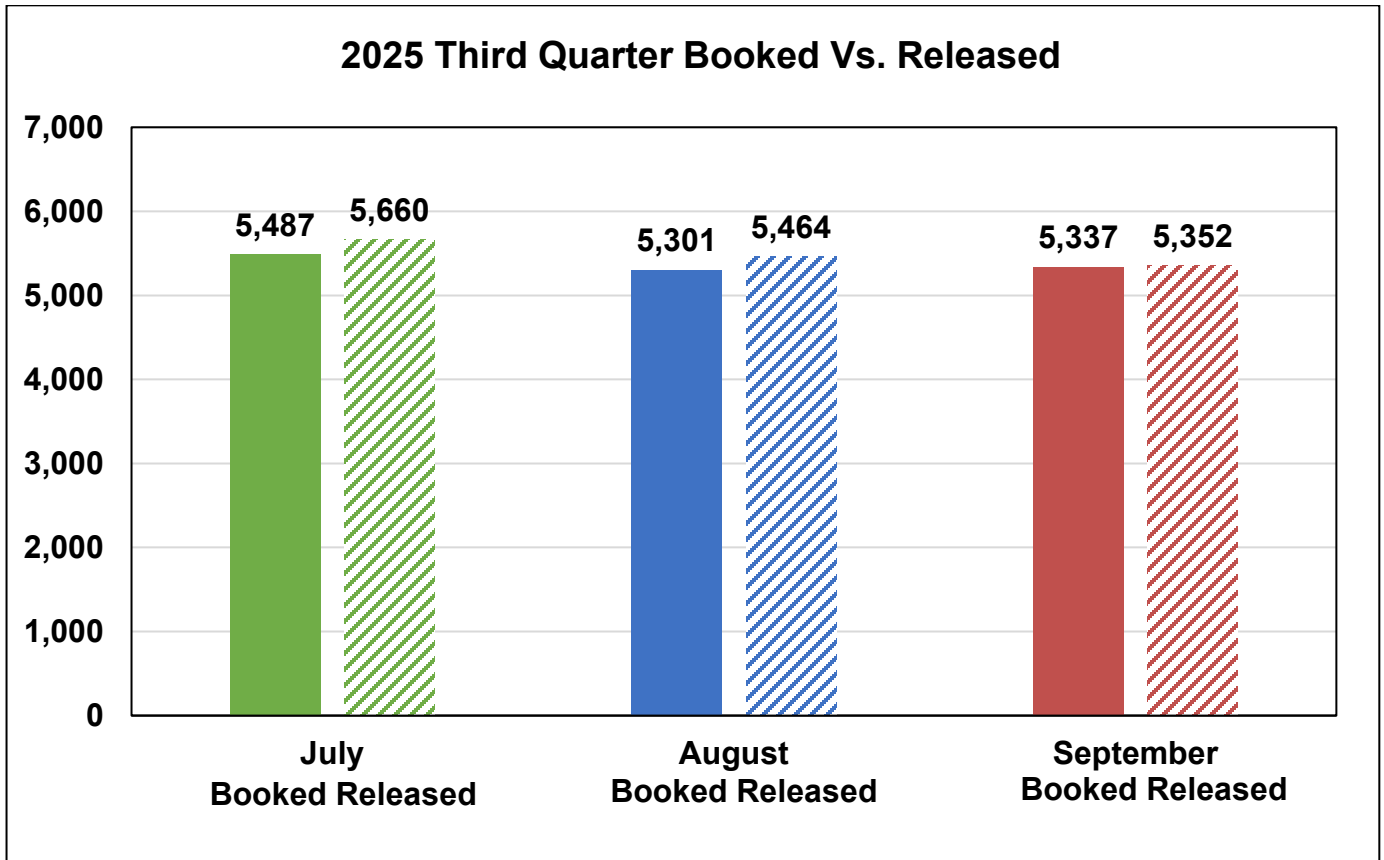
## THIRD QUARTER 2025 - ARRESTS VS. BOOKINGS

The graph below compares the total arrests and bookings for this quarter.



## THIRD QUARTER 2025 – BOOKINGS VS. RELEASES

The Department averaged approximately 5,492 releases this quarter. This is a 1% increase compared to last quarter’s average of 5,420 releases.



## COUNTY JAIL RELEASE PRACTICES

To manage the inmate population, traditional county sentenced inmates were subject to early release under the following conditions. In 2020, additional release measures were implemented to help mitigate the spread of COVID-19. These measures included increasing the number of days credited toward early release for short-term sentences and reducing the percent releases to 10%. These accelerated release policies have remained in effect to date in order to maintain a reduced inmate population.

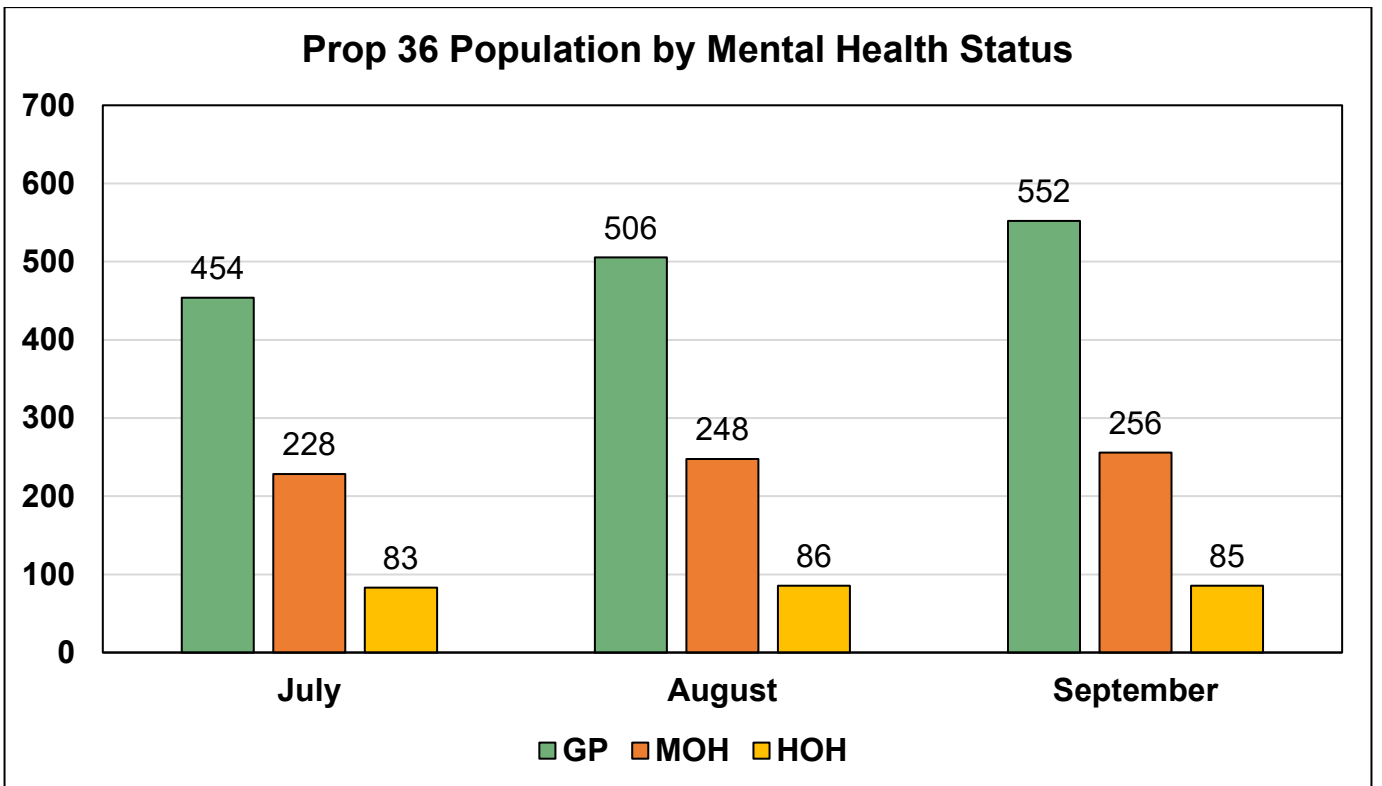
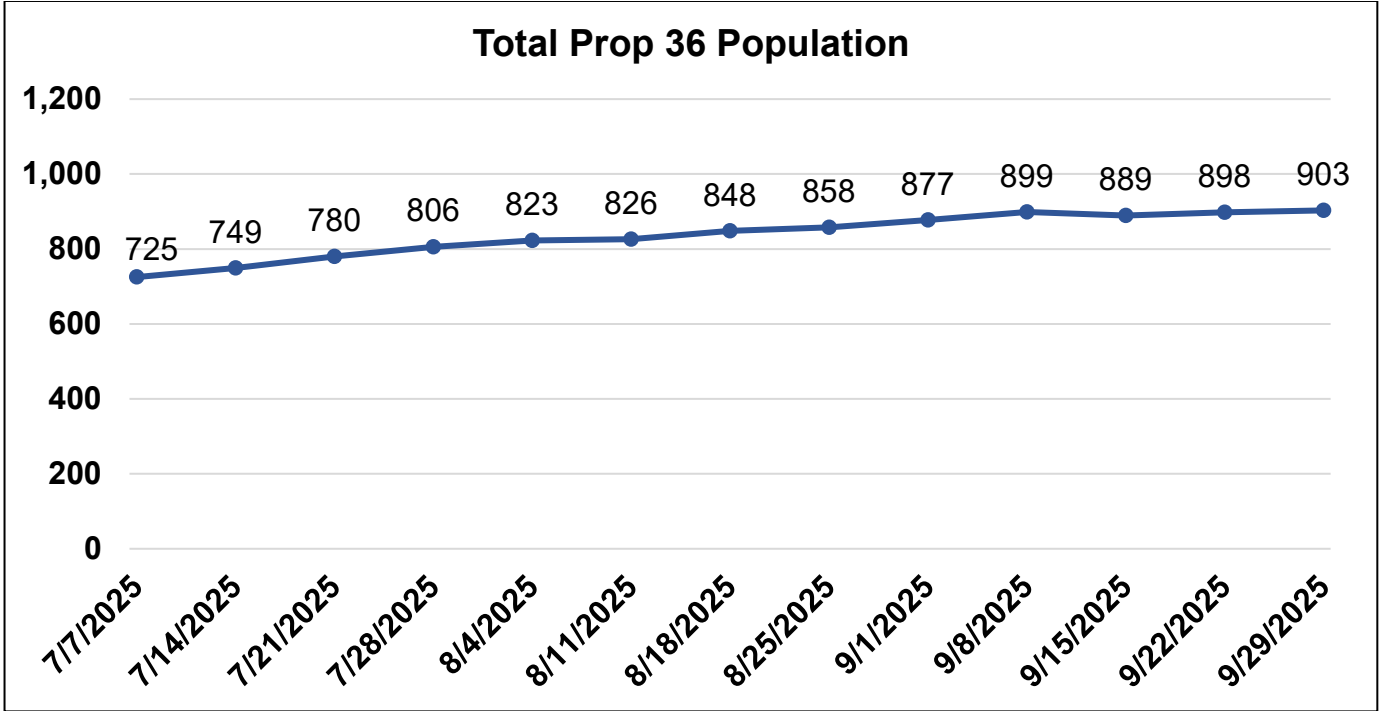
Month	Release Criteria		M7 Release Criteria <sup>1</sup>		Short Sentence <sup>2</sup>	
	Male	Female	Felony	Misdemeanor	Male	Female
July	10%	10%	100%	100%	240 days	240 days
August	10%	10%	100%	100%	240 days	240 days
September	10%	10%	100%	100%	240 days	240 days

<sup>1</sup> Inmates classified as M7 have sentences for designated serious and/or violent offenses or have notoriety in the community, which requires their record jacket to go through extra security checks upon release from LASD’s custody.

<sup>2</sup> Shorts are inmates sentenced to a term in county jail, which after all legal credits are awarded and the current jail percentage time is considered, are immediately released from LASD’s custody after processing from court.

## PROPOSITION 36 IN-CUSTODY POPULATION

On December 18, 2024, Proposition 36 took effect, modifying existing laws and adding substantive charges and enhancements to sections of the Penal Code and Health and Safety Code related to theft, property damage, and drug crimes.



\*Monthly averages are gathered every Monday.

### HOMELESS

The chart below provides an average breakdown of the homeless inmate population who stated they were homeless by gender, major race, and age category. The homeless inmates comprised 29% of the total population.<sup>1</sup>

	July	August	September	Average
<b>Male</b>	3,408	3,416	3,446	<b>3,423</b>
<b>Female</b>	388	413	419	<b>407</b>
<b>Total</b>	<b>3,796</b>	<b>3,829</b>	<b>3,865</b>	<b>3,830</b>

	July	August	September	Average
<b>Hispanic</b>	1,991	2,025	2,044	<b>2,020</b>
<b>Black</b>	1,145	1,135	1,149	<b>1,143</b>
<b>White</b>	536	543	535	<b>538</b>
<b>Other</b>	124	126	137	<b>129</b>
<b>Total</b>	<b>3,796</b>	<b>3,829</b>	<b>3,865</b>	<b>3,830</b>

	July	August	September	Average
<b>18 to 25</b>	418	424	427	<b>423</b>
<b>26 to 34</b>	1,347	1,333	1,309	<b>1,330</b>
<b>35 to 39</b>	679	690	723	<b>697</b>
<b>40 to 44</b>	522	537	546	<b>535</b>
<b>45 &amp; Older</b>	830	845	860	<b>845</b>
<b>Total</b>	<b>3,796</b>	<b>3,829</b>	<b>3,865</b>	<b>3,830</b>

<sup>1</sup>Homeless data is collected from COMPAS based on a snapshot of the inmate population collected each business day. These are numbers based upon self-identification and have not been confirmed.

### VETERAN

The chart below provides an average breakdown of the veteran inmate population who stated they have served in the United States Military by gender, major race, and age category. The veteran inmates comprised 2% of the total population.<sup>2</sup>

	July	August	September	Average
<b>Male</b>	195	209	214	<b>206</b>
<b>Female</b>	11	13	11	<b>12</b>
<b>Total</b>	<b>206</b>	<b>222</b>	<b>225</b>	<b>218</b>

	July	August	September	Average
<b>Hispanic</b>	57	63	69	<b>63</b>
<b>Black</b>	77	82	84	<b>81</b>
<b>White</b>	61	68	62	<b>64</b>
<b>Other</b>	11	9	10	<b>10</b>
<b>Total</b>	<b>206</b>	<b>222</b>	<b>225</b>	<b>218</b>

	July	August	September	Average
<b>18 to 25</b>	13	11	11	<b>12</b>
<b>26 to 34</b>	45	48	45	<b>46</b>
<b>35 to 39</b>	30	30	33	<b>31</b>
<b>40 to 44</b>	32	38	45	<b>38</b>
<b>45 &amp; Older</b>	86	95	91	<b>91</b>
<b>Total</b>	<b>206</b>	<b>222</b>	<b>225</b>	<b>218</b>

<sup>2</sup>Veteran data is collected from COMPAS based on a snapshot of the inmate population collected each business day. These are numbers based upon self-identification and have not been confirmed by the Veterans Administration.

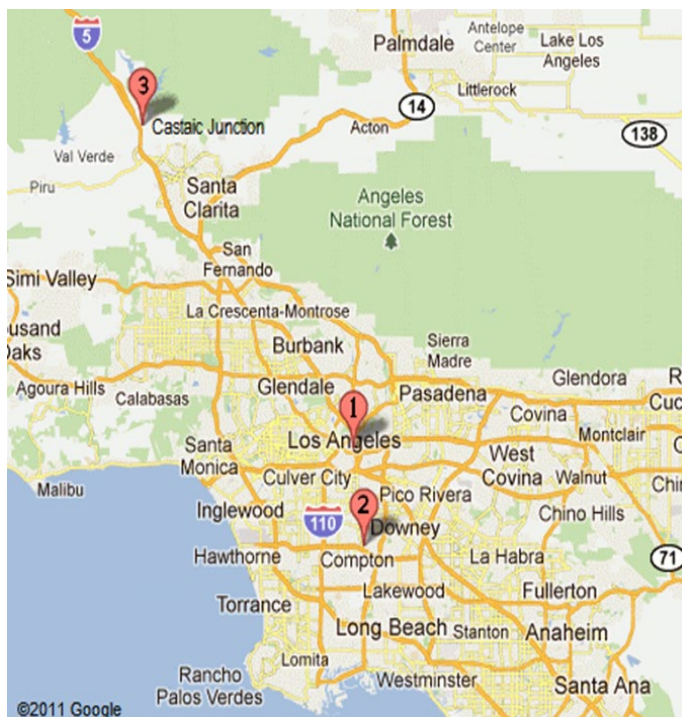
# FACILITIES OVERVIEW

## RATED CAPACITY

The Board of State and Community Corrections (BSCC) is a government body which recommends capacity limits for county jails. The BSCC conducts biennial jail inspections; the Department was rated in November 2023. The BSCC does not rate processing, medical and discipline beds.

<b>Board of State and Community Corrections</b>				
<b>LASD Custody Facilities</b>	<b>BSCC Rated Capacity</b>	<b>Quarterly Facility ADIP</b>	<b>Above BSCC Rated Capacity</b>	<b>% Over BSCC Capacity</b>
Men's Central Jail	3,512	3,679	167	5%
Men's Central Jail Outpatient Clinic	Unrated	314	-	-
Twin Towers Correctional Facility	2,432	2,420	-12	-1%
Correctional Treatment Center	Unrated	108	-	-
Century Regional Detention Facility	1,708	1,455	-253	-15%
CRDF Reception Center	Unrated	2	-	-
Pitchess Detention Center – East	926	12	-914	-99%
Pitchess Detention Center – North	830	1,310	480	58%
Pitchess Detention Center – South	782	623	-159	-20%
North County Correctional Facility	2,214	3,112	898	41%
Inmate Reception Center	Unrated	182	-	-
LCMC Jail Wards	Unrated	26	-	-
<b>Total BSCC Rated Capacity*</b>	<b>Rated Quarterly Facility ADIP</b>	<b>Total Above BSCC Rated Capacity</b>	<b>Total % Over BSCC Capacity</b>	<b>Total % Over BSCC Capacity Excluding East Facility</b>
12,404	12,611	207	2%	10%

\*Statistical data gathered from Board of State and Community Corrections Inspection Report 11/2023



<b>LA County Jail Facilities</b>	
<b>1</b>	<ul style="list-style-type: none"> <li>➤ Men's Central Jail (MCJ)</li> <li>➤ Twin Towers Correctional Facility (TTCF)</li> <li>➤ Los Angeles County Medical Center (LCMC)</li> <li>➤ Correctional Treatment Center (CTC)</li> <li>➤ Inmate Reception Center (IRC)</li> </ul>
<b>2</b>	<ul style="list-style-type: none"> <li>➤ Century Regional Detention Facility (CRDF)</li> </ul>
<b>3</b>	<ul style="list-style-type: none"> <li>➤ PDC East Facility</li> <li>➤ PDC North Facility</li> <li>➤ PDC South Facility</li> <li>➤ North County Correctional Facility (NCCF)</li> </ul>

## JAIL HOUSING FACILITIES

<b>MEN'S CENTRAL JAIL TOTAL INMATE POPULATION 2025</b>					
<b>Security Level</b>	<b>July</b>	<b>August</b>	<b>September</b>	<b>Quarterly Average</b>	<b>% of Population</b>
Security Level Low 1-4	385	430	449	<b>421</b>	<b>11%</b>
Security Level Medium 5-7	2,046	2,017	1,987	<b>2,017</b>	<b>50%</b>
Security Level High 8-9	1,459	1,586	1,648	<b>1,564</b>	<b>39%</b>
<b>Facility Total</b>	<b>3,890</b>	<b>4,033</b>	<b>4,084</b>	<b>4,002</b>	<b>100%</b>
<b>SUBPOPULATION HOUSED THROUGHOUT FACILITY<sup>1</sup></b>					
<b>Housing Type</b>	<b>July</b>	<b>August</b>	<b>September</b>	<b>Quarterly Average</b>	
Administratively Segregated (K-10) <sup>2</sup>	30	34	43	<b>36</b>	
Restrictive Housing (K-17, K-18, K-19, K-20) <sup>3</sup>	271	292	262	<b>275</b>	
Administratively Segregated (K-1) <sup>4</sup>	1	1	1	<b>1</b>	
Americans with Disabilities Act (ADA)	323	332	357	<b>337</b>	
Discipline	59	64	67	<b>63</b>	
General Population on Psychotropic Meds	344	346	368	<b>353</b>	
Inmate Workers	226	225	232	<b>228</b>	
LGBTQ+ (K-6G)	286	272	281	<b>280</b>	
Medical/Clinic	320	315	315	<b>317</b>	
Other (K-6T/B) <sup>5</sup>	247	258	286	<b>264</b>	
Pro-Per	41	44	44	<b>43</b>	
EBI / START	92	91	80	<b>88</b>	
Mentally Ill – Moderate Observation / Service Area (MOH) <sup>†</sup>	1,065	1,194	1,216	<b>1,158</b>	
Sexually Violent Predators	1	1	1	<b>1</b>	
Sex Crimes Against Children (K-6Y)	466	458	461	<b>462</b>	
Developmentally Disabled	5	9	7	<b>7</b>	

<sup>1</sup> Subpopulation housed throughout facility includes those who are classified with special housing needs and are included in the total inmate population. An inmate may belong to more than one subpopulation.

<sup>2</sup> K-10 Administratively segregated for various reasons including danger to self or others.

<sup>3</sup> K-17 Disruptive; K-18 Protective Custody; K-19 Major Disruptive; K-20 Highly Dangerous.

<sup>4</sup> K-1 Law Enforcement relation in custody.

<sup>5</sup> K-6T Contempt of court, K-6B threatened by others.

<sup>†</sup> Statistical data are averages gathered from Facility Count Sheet every Tuesday.

<b>TWIN TOWERS CORRECTIONAL FACILITY TOTAL INMATE POPULATION 2025</b>					
<b>Security Level</b>	<b>July</b>	<b>August</b>	<b>September</b>	<b>Quarterly Average</b>	<b>% of Population</b>
Security Level Low 1-4	242	226	231	<b>233</b>	<b>9%</b>
Security Level Medium 5-7	1,580	1,571	1,621	<b>1,591</b>	<b>62%</b>
Security Level High 8-9	728	727	730	<b>728</b>	<b>29%</b>
<b>Facility Total</b>	<b>2,550</b>	<b>2,524</b>	<b>2,582</b>	<b>2,552</b>	<b>100%</b>
<b>SUBPOPULATION HOUSED THROUGHOUT FACILITY<sup>1</sup></b>					
<b>Housing Type</b>	<b>July</b>	<b>August</b>	<b>September</b>	<b>Quarterly Average</b>	
Administratively Segregated (K-10) <sup>2</sup>	91	85	74	<b>83</b>	
Restrictive Housing (K-17, K-18, K-19, K-20) <sup>3</sup>	157	170	158	<b>162</b>	
Administratively Segregated (K-1) <sup>4</sup>	11	11	9	<b>10</b>	
Administratively Segregated (K-6B) <sup>5</sup>	214	214	208	<b>212</b>	
Americans With Disabilities (ADA)	180	181	207	<b>189</b>	
Discipline	9	14	11	<b>11</b>	
Female Medical (CTC)	17	18	24	<b>20</b>	
General Population on Psychotropic Meds Security Level 1-4	15	14	16	<b>15</b>	
General Population on Psychotropic Meds Security Level 5-7	152	151	151	<b>151</b>	
General Population on Psychotropic Meds Security Level 8-9	78	72	81	<b>77</b>	
LGBTQ+ (K-6G)	85	94	93	<b>91</b>	
Education Based Incarceration (EBI)	126	125	124	<b>125</b>	
Veterans	35	26	35	<b>32</b>	
Medical (CTC)	88	91	84	<b>88</b>	
Mentally Ill – High Observation Housing (HOH)	1,340	1,331	1,382	<b>1,351</b>	
Mentally Ill – Moderate Observation / Service Area (MOH)	3,149	3,222	3,331	<b>3,234</b>	
Mentally Ill – Moderate Observation Housing (MOH) Sex Crimes Against Children (K-6Y)	86	86	74	<b>82</b>	

<sup>1</sup> Subpopulation housed throughout facility includes those who are classified with special housing needs and are included in the total inmate population. An inmate may belong to more than one subpopulation.

<sup>2</sup> K-10: Administratively segregated for various reasons including danger to self or others.

<sup>3</sup> K-17: Disruptive; K-18: Protective Custody; K-19: Major Disruptive; K-20: Highly Dangerous.

<sup>4</sup> K-1 Law Enforcement relation in custody.

<sup>5</sup> K-6B: Administratively segregated are at risk of assault in GP housing.

\* Statistical data are averages gathered from Facility Count Sheet every Tuesday.

**CENTURY REGIONAL DETENTION FACILITY  
TOTAL INMATE POPULATION  
2025**

<b>Security Level</b>	<b>July</b>	<b>August</b>	<b>September</b>	<b>Quarterly Average</b>	<b>% of Population</b>
Security Level Low 1-4	168	179	179	<b>175</b>	<b>12%</b>
Security Level Medium 5-7	1,128	1,169	1,211	<b>1,169</b>	<b>78%</b>
Security Level High 8-9	152	149	150	<b>151</b>	<b>10%</b>
<b>Facility Total</b>	<b>1,448</b>	<b>1,497</b>	<b>1,540</b>	<b>1,495</b>	<b>100%</b>

**SUBPOPULATION HOUSED THROUGHOUT FACILITY<sup>1</sup>**

<b>Housing Type</b>	<b>July</b>	<b>August</b>	<b>September</b>	<b>Quarterly Average</b>
Administratively Segregated (K-10) <sup>2</sup>	17	14	14	<b>15</b>
Restrictive Housing (K-17, K-18, K-19, K-20) <sup>3</sup>	28	35	33	<b>32</b>
Americans With Disabilities Act (ADA)	39	48	50	<b>46</b>
K-8 Pregnant, Post-partum, Miscarriage or Terminated Pregnancy	24	29	29	<b>27</b>
Discipline	17	21	26	<b>21</b>
Inmate Workers	109	117	118	<b>115</b>
Medical/Clinic	6	8	9	<b>8</b>
Mentally III – High Observation Housing (HOH)	353	369	360	<b>361</b>
Mentally III – Moderate Observation Housing / Service Area (MOH)	279	321	357	<b>319</b>
Administratively Segregated (K-6B) <sup>4</sup>	6	6	5	<b>6</b>
Education Based Incarceration (EBI) <sup>5</sup>	138	152	137	<b>142</b>
Sex Crimes Against Children (K-6Y)	7	7	7	<b>7</b>

<sup>1</sup> Subpopulation housed throughout facility includes those who are classified with special housing needs and are included in the total inmate population. An inmate may belong to more than one subpopulation.

<sup>2</sup> K-10-Administratively segregated for various reasons including danger to self or others.

<sup>3</sup> K-17: Disruptive; K-18: Protective Custody; K-19: Major Disruptive; K-20: Highly Dangerous.

<sup>4</sup> K-6B: Administratively segregated are at risk of assault in GP housing.

<sup>5</sup> EBI includes MOH and GP inmates as of April 2023

\* Statistical data are averages gathered from Facility Count Sheet every Tuesday.

<b>PITCHESS DETENTION CENTER – EAST FACILITY (FIRE CAMP) TOTAL INMATE POPULATION 2025</b>					
<b>Security Level</b>	<b>July</b>	<b>August</b>	<b>September</b>	<b>Quarterly Average</b>	<b>% of Population</b>
Security Level Low 1-4	4	7	8	6	51%
Security Level Medium 5-7	3	6	9	6	49%
<b>Facility Total</b>	<b>7</b>	<b>13</b>	<b>17</b>	<b>12</b>	<b>100%</b>

\* Statistical data are averages gathered from Facility Count Sheet every Tuesday.

<b>PITCHESS DETENTION CENTER – NORTH TOTAL INMATE POPULATION 2025</b>					
<b>Security Level</b>	<b>July</b>	<b>August</b>	<b>September</b>	<b>Quarterly Average</b>	<b>% of Population</b>
Security Level Low 1-4	65	66	74	68	5%
Security Level Medium 5-7	1,063	1,003	1,059	1,042	80%
Security Level High 8-9	202	194	204	200	15%
<b>Facility Total</b>	<b>1,330</b>	<b>1,263</b>	<b>1,337</b>	<b>1,310</b>	<b>100%</b>

<b>SUBPOPULATION HOUSED THROUGHOUT FACILITY<sup>1</sup></b>					
<b>HOUSING TYPE</b>	<b>July</b>	<b>August</b>	<b>September</b>	<b>Quarterly Average</b>	
Discipline	19	14	15	16	
Mentally Ill - Moderate Observation Housing (MOH) <sup>†</sup>	1,303	1,241	1,315	1,286	

<sup>1</sup> Subpopulation housed throughout facility includes those who are classified with special housing needs and are included in the total inmate population. An inmate may belong to more than one subpopulation.

<sup>†</sup> On December 2023, K-6Y/ K-6Y EBI inmates moved from PDC North to MCJ; MOH inmates moved from MCJ to PDC North.

\* Statistical data are averages gathered from Facility Count Sheet every Tuesday.

**PITCHESS DETENTION CENTER - SOUTH  
TOTAL INMATE POPULATION  
2025**

<b>Security Level</b>	<b>July</b>	<b>August</b>	<b>September</b>	<b>Quarterly Average</b>	<b>% of Population</b>
Security Level Low 1-4	14	14	17	<b>15</b>	<b>2%</b>
Security Level Medium 5-7	568	624	622	<b>605</b>	<b>98%</b>
<b>Facility Total</b>	<b>582</b>	<b>638</b>	<b>639</b>	<b>620</b>	<b>100%</b>

**SUBPOPULATION HOUSED THROUGHOUT FACILITY<sup>1</sup>**

<b>Housing Type</b>	<b>July</b>	<b>August</b>	<b>September</b>	<b>Quarterly Average</b>
Programs	150	141	138	<b>143</b>
Inmate Workers	93	101	102	<b>99</b>

<sup>1</sup> Subpopulation housed throughout facility includes those who are classified with special housing needs and are included in the total inmate population. An inmate may belong to more than one subpopulation.

\* Statistical data are averages gathered from Facility Count Sheet every Tuesday.

**NORTH COUNTY CORRECTIONAL FACILITY  
TOTAL INMATE POPULATION  
2025**

<b>Security Level</b>	<b>July</b>	<b>August</b>	<b>September</b>	<b>Quarterly Average</b>	<b>% of Population</b>
Security Level Low 1-4	16	13	20	<b>16</b>	<b>1%</b>
Security Level Medium 5-7	2,455	2,437	2,468	<b>2,453</b>	<b>79%</b>
Security Level High 8-9	639	642	622	<b>634</b>	<b>20%</b>
<b>Facility Total</b>	<b>3,110</b>	<b>3,092</b>	<b>3,110</b>	<b>3,103</b>	<b>100%</b>

**SUBPOPULATION HOUSED THROUGHOUT FACILITY<sup>1</sup>**

<b>Housing Type</b>	<b>July</b>	<b>August</b>	<b>September</b>	<b>Quarterly Average</b>
Restrictive Housing (K-10, K-17, K-18, K-19, K-20) <sup>2</sup>	2	4	0	<b>2</b>
Administratively Segregated (K6-B)	123	122	116	<b>120</b>
Discipline	58	57	50	<b>55</b>
Inmate Workers	548	567	570	<b>562</b>
Education Based Incarceration (EBI)	71	66	79	<b>72</b>
Veterans	31	24	23	<b>26</b>

<sup>1</sup> Subpopulation housed throughout facility includes those who are classified with special housing needs and are included in the total inmate population. An inmate may belong to more than one subpopulation.

<sup>2</sup> K-17: Disruptive; K-18: Protective Custody; K-19: Major Disruptive; K-20: Highly Dangerous.

\* Statistical data are averages gathered from Facility Count Sheet every Tuesday.

# POPULATION OVERVIEW

## INMATE POPULATION DEMOGRAPHICS

Racial demographics this quarter indicate the three most populous racial groups within the County jail for both male and female offenders are Hispanic (55%), Black (29%), and White (13%).

Combined		July 2025		August 2025		September 2025		Quarterly Average	Quarterly %
Race	Population	%	Population	%	Population	%	Population	%	
Hispanic	7,071	55%	7,186	55%	7,295	55%	7,185	55%	
Black	3,818	29%	3,816	29%	3,919	29%	3,851	29%	
White	1,699	13%	1,746	13%	1,768	13%	1,738	13%	
All Others	369	3%	370	3%	367	3%	368	3%	
Chinese	55	0%	59	0%	56	0%	56	0%	
Filipino	23	0%	23	0%	27	0%	24	0%	
Pacific Islanders	12	0%	13	0%	16	0%	14	0%	
Japanese	7	0%	8	0%	8	0%	8	0%	
American Indian	14	0%	14	0%	15	0%	14	0%	
<b>Total</b>	<b>13,068</b>	<b>100%</b>	<b>13,235</b>	<b>100%</b>	<b>13,471</b>	<b>100%</b>	<b>13,258</b>	<b>100%</b>	

Male		July 2025		May 2025		September 2025		Quarterly Average	Quarterly %
Race	Population	%	Population	%	Population	%	Population	%	
Hispanic	6,410	56%	6,503	56%	6,602	56%	6,505	56%	
Black	3,360	29%	3,352	29%	3,434	29%	3,382	29%	
White	1,434	12%	1,465	12%	1,477	12%	1,459	12%	
All Others	328	3%	327	3%	318	3%	324	3%	
Chinese	50	0%	52	0%	49	0%	50	0%	
Filipino	21	0%	19	0%	24	0%	21	0%	
Pacific Islanders	11	0%	11	0%	13	0%	12	0%	
Japanese	7	0%	7	0%	6	0%	7	0%	
American Indian	9	0%	10	0%	12	0%	10	0%	
<b>Total</b>	<b>11,630</b>	<b>100%</b>	<b>11,746</b>	<b>100%</b>	<b>11,935</b>	<b>100%</b>	<b>11,770</b>	<b>100%</b>	

Female		July 2025		August 2025		September 2025		Quarterly Average	Quarterly %
Race	Population	%	Population	%	Population	%	Population	%	
Hispanic	661	47%	683	47%	693	46%	680	46%	
Black	458	32%	464	31%	485	32%	469	32%	
White	265	18%	281	19%	291	19%	279	19%	
All Others	41	3%	43	3%	49	3%	44	3%	
Chinese	5	0%	7	0%	7	0%	6	0%	
Filipino	2	0%	4	0%	3	0%	3	0%	
Pacific Islanders	1	0%	2	0%	3	0%	2	0%	
Japanese	0	0%	1	0%	2	0%	1	0%	
American Indian	5	0%	4	0%	3	0%	4	0%	
<b>Total</b>	<b>1,438</b>	<b>100%</b>	<b>1,489</b>	<b>100%</b>	<b>1,536</b>	<b>100%</b>	<b>1,488</b>	<b>100%</b>	

\*Statistical data are averages gathered from Custody Division Daily Briefing Report every Tuesday.

## INMATE POPULATION OFFENDER AGE GROUPS

The 26–34-year-old cohort was the most frequently represented age group within the jail population this quarter, followed by the 45 & older.

Combined	July 2025		August 2025		September 2025		Quarterly Average	Quarterly %
Age Group	Population	%	Population	%	Population	%		
18 to 25	1,786	13%	1,816	13%	1,839	14%	1,814	13%
26 to 34	4,434	34%	4,481	34%	4,448	33%	4,454	34%
35 to 39	2,324	18%	2,367	18%	2,464	18%	2,385	18%
40 to 44	1,657	13%	1,693	13%	1,762	13%	1,704	13%
45 & Older	2,867	22%	2,878	22%	2,958	22%	2,901	22%
<b>Total</b>	<b>13,068</b>	<b>100%</b>	<b>13,235</b>	<b>100%</b>	<b>13,471</b>	<b>100%</b>	<b>13,258</b>	<b>100%</b>

Male	July 2025		August 2025		September 2025		Quarterly Average	Quarterly %
Age Group	Population	%	Population	%	Population	%		
18 to 25	1,609	14%	1,631	13%	1,653	14%	1,631	14%
26 to 34	3,910	34%	3,949	34%	3,905	33%	3,921	33%
35 to 39	2,051	18%	2,080	18%	2,170	18%	2,100	18%
40 to 44	1,445	12%	1,478	13%	1,531	13%	1,485	13%
45 & Older	2,615	22%	2,608	22%	2,676	22%	2,633	22%
<b>Total</b>	<b>11,630</b>	<b>100%</b>	<b>11,746</b>	<b>100%</b>	<b>11,935</b>	<b>100%</b>	<b>11,770</b>	<b>100%</b>

Female	July 2025		August 2025		September 2025		Quarterly Average	Quarterly %
Age Group	Population	%	Population	%	Population	%		
18 to 25	177	12%	185	13%	186	13%	183	12%
26 to 34	524	36%	532	36%	543	35%	533	36%
35 to 39	273	19%	287	20%	294	19%	285	19%
40 to 44	212	15%	215	14%	231	15%	219	15%
45 & Older	252	18%	270	17%	282	18%	268	18%
<b>Total</b>	<b>1,438</b>	<b>100%</b>	<b>1,489</b>	<b>100%</b>	<b>1,536</b>	<b>100%</b>	<b>1,488</b>	<b>100%</b>

\*Statistical data are averages gathered from Custody Division Daily Briefing Report every Tuesday.

## JAIL POPULATION BY SECURITY LEVEL

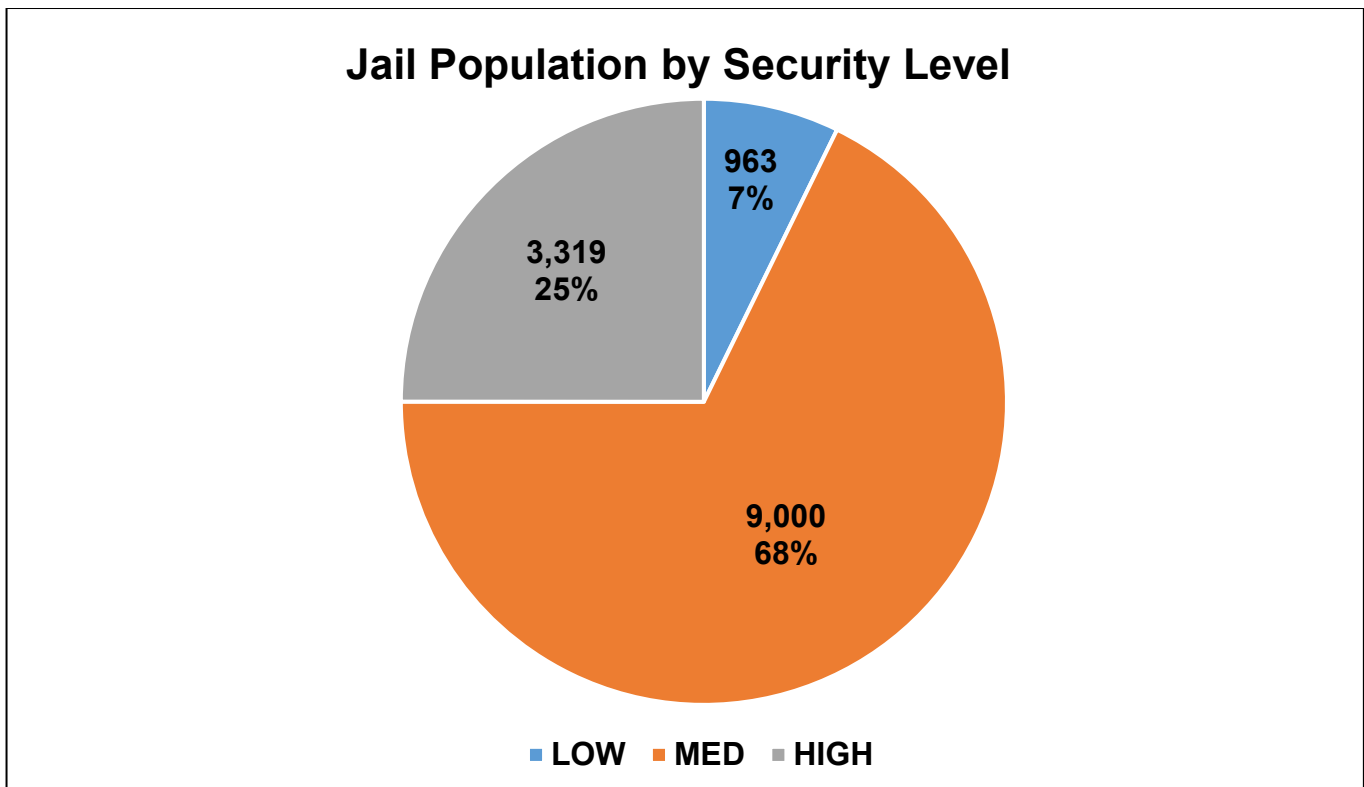
The Department utilizes the Northpointe Classification system to assign security levels to inmates. The security levels guide where an inmate will be housed based on their individual risk for in-custody misconduct. Lower security housing areas offer more programming and privileges to better prepare the inmates for release. Higher security housing is more restricted and therefore limited in what programs are offered, due to potential risk of serious misconduct and/or escape. All inmates are re-evaluated for reclassification of security level every 45 days.

Jail Population by Security Level				
Month	Low	Medium	High	Total
July	920	8,948	3,216	13,084
August	964	8,953	3,343	13,260
September	1,004	9,099	3,399	13,502
Average	<b>963</b>	<b>9,000</b>	<b>3,319</b>	<b>13,282</b>
Percent	<b>7%</b>	<b>68%</b>	<b>25%</b>	<b>100%</b>

\*This chart only includes inmates housed in LASD Type II facilities, it does not include inmates housed in alternative custody beds.

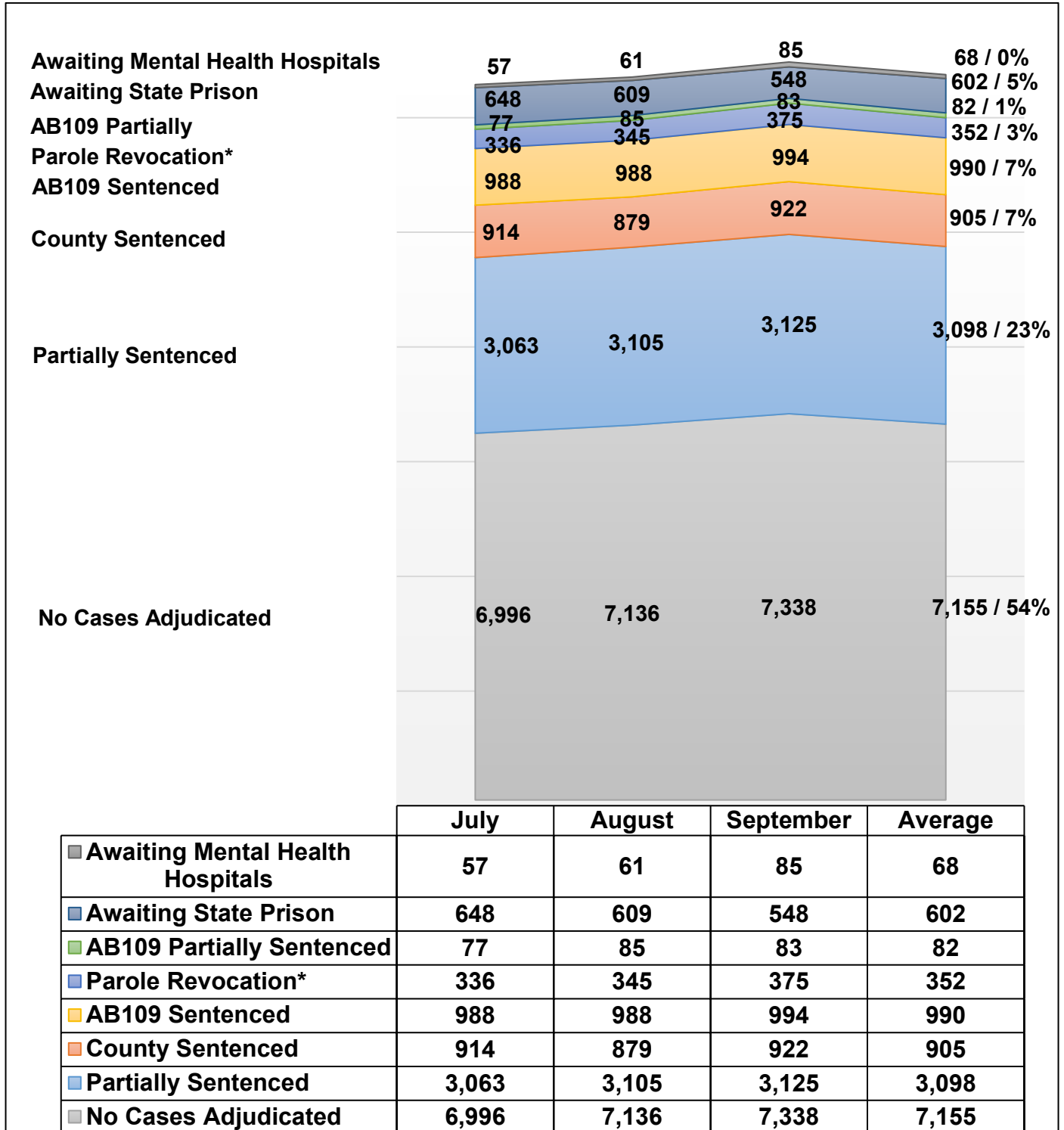
\*\*Information contained is based on a snapshot of the daily inmate population purged every Tuesday.

The pie graph below depicts the average number of inmates housed this quarter by security level. The percentage is calculated to the Facility ADIP for this quarter (13,282).



## INMATE POPULATION BREAKDOWN

The inmate population consists of various categories of inmates in broad groupings, including: no cases adjudicated, traditional county sentenced, AB109 sentenced, AB109 sentenced with additional charges, parole/revocation violators, and those awaiting transfer to state prison.



\*Parole Revocation includes PRCS Revocation 3455, Flash Incarceration 3454 and Inmates with a 3056 hold.

\*\*This report is a general overview of the inmate population. As it does not include all subgroups of the inmate population, it is not intended to be relied upon as a definitive representation of the entire inmate population.

## **INMATE POPULATION BREAKDOWN CONTINUED**

- **AWAITING STATE PRISON**

During this quarter, an average of 602 inmates were awaiting transfer to state prison, some while pending trial on other cases.

- **AB109 PAROLE AND PROBATION VIOLATORS**

An average of 352 AB109 inmates were in custody for violating their parole or probation.

- **AB109 SENTENCED**

An average of 990 inmates were in custody, sentenced under AB109.

- **TRADITIONAL COUNTY SENTENCED INMATE POPULATION**

The average daily count for the TCS population was 905, approximately seven percent (7%) of the inmate population.

- **NO CASES ADJUDICATED**

During this quarter, there were approximately 16,125 new bookings into County jail. Fifty-four percent (54%) of the average daily inmate population (13,243) was comprised of inmates who did not have their cases adjudicated. These include inmates who have an open case and have not been sentenced by the courts, along with court returnees and inmates enroute to other agencies with no Los Angeles County matters. Court returnees are inmates returning from state prisons or state hospitals to either face new charges, re-litigate past crimes, follow up on competency reports or for civil matters (witness, child custody, etc.).

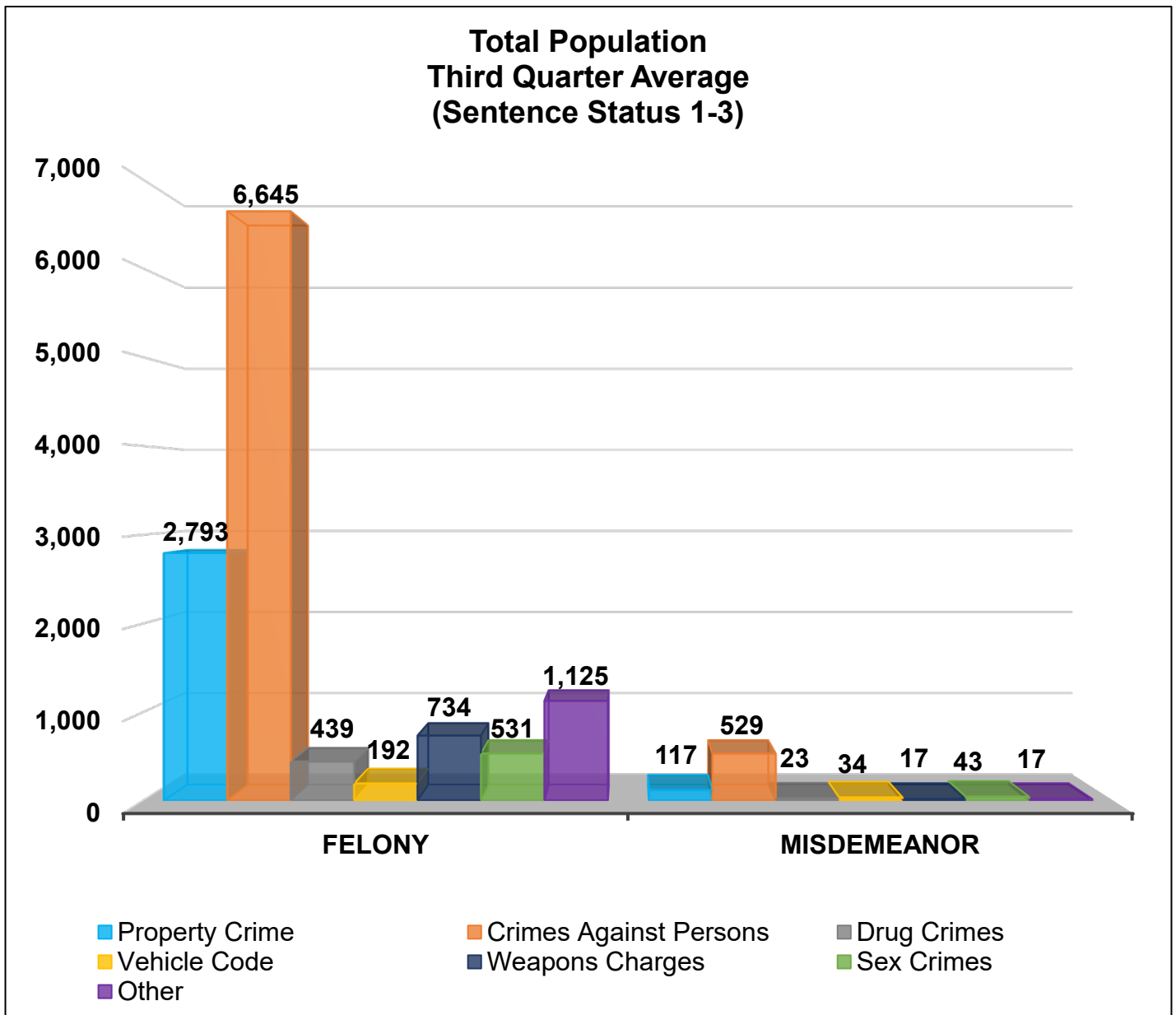
## CRIME CLASSIFICATION STATISTICS

The chart below provides an average breakdown for the entire inmate population, both sentenced and un-sentenced, by arrest category.

Total Population (Sentence Status 1-3)

Arrest Category	Property Crimes	Crimes Against Persons	Drug Crimes	Vehicle Codes	Weapons Charges	Sex Crimes	Other	Total	% of the Population
<b>Felony</b>	2,793	6,645	439	192	734	531	1,125	12,459	94%
<b>Misdemeanor</b>	117	529	23	34	17	43	17	780	6%
<b>Total</b>	2,910	7,174	462	226	751	574	1,142	13,239	100%

\*Information contained is based on a snapshot of the daily inmate population every Tuesday.



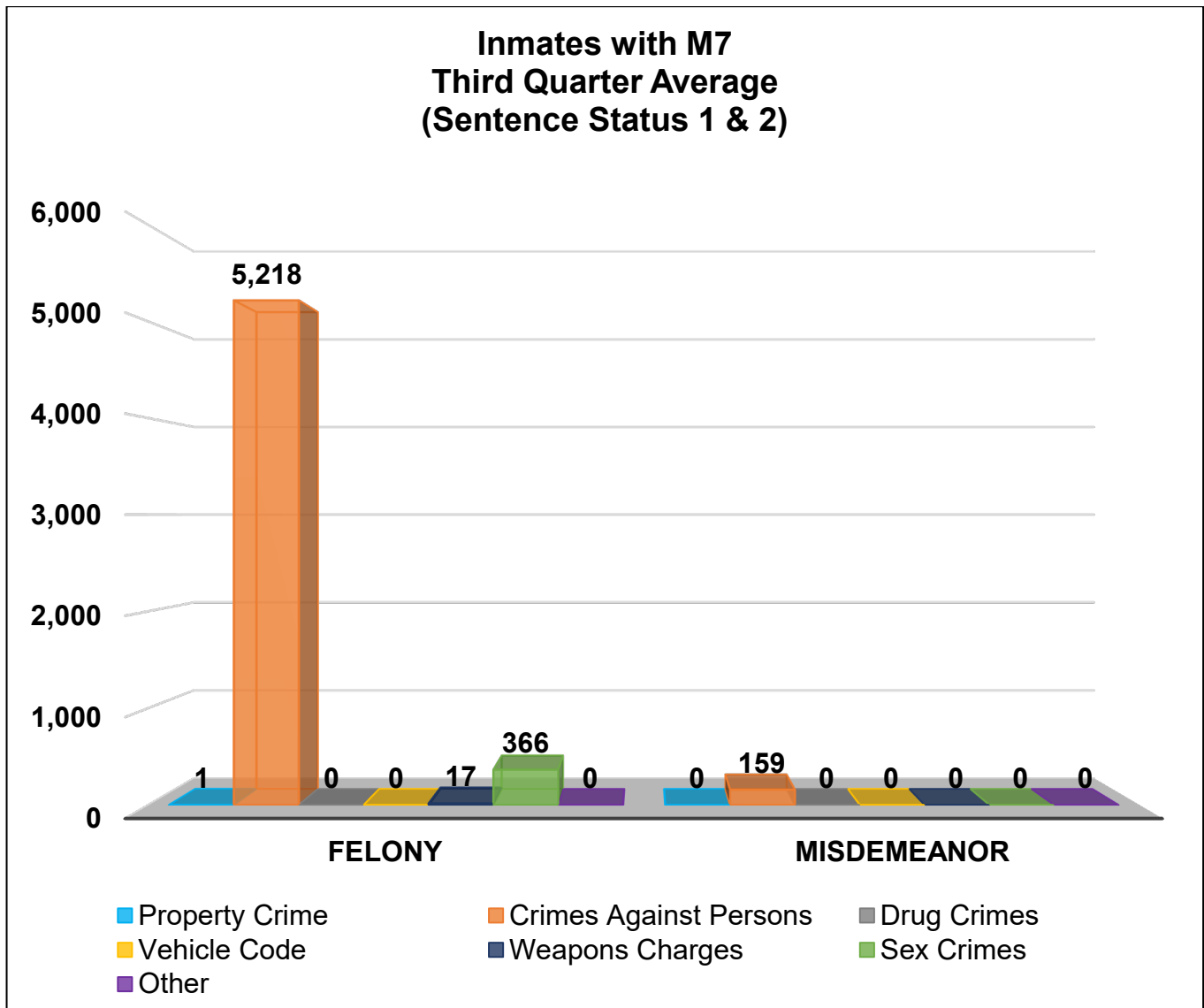
## INMATES WITH ASSAULTIVE/VIOLENT CHARGES (M7)

The chart below provides a breakdown for the inmate population with M7 charges, sentence status one and two, and by arrest category.

Inmates with Assaultive/Violent Charges (M7) (Sentence Status 1 and 2)

Arrest Category	Property Crimes	Crimes Against Persons	Drug Crimes	Vehicle Codes	Weapons Charges	Sex Crimes	Other	Total	% of the Sentence Status 1 and 2 M7 Population
Felony	1	5,218	0	0	17	366	0	5,602	97%
Misdemeanor	0	159	0	0	0	0	0	159	3%
Total	1	5,377	0	0	17	366	0	5,761	100%

\*Information contained is based on a snapshot of the daily inmate population every Tuesday.

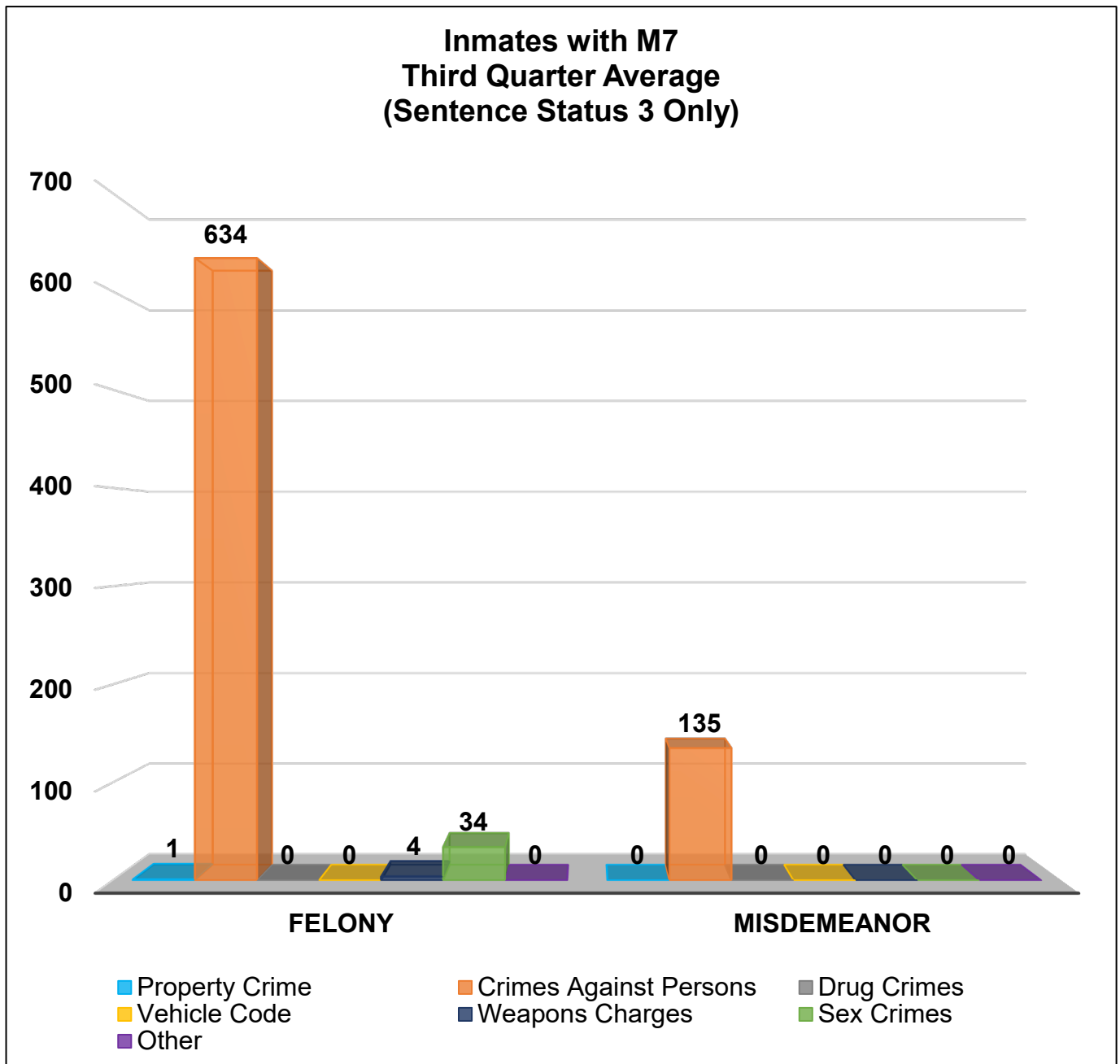


## INMATES WITH ASSAULTIVE/VIOLENT CHARGES (M7) CONTINUED

Inmates with Assaultive/Violent Charges (M7) (Sentence Status 3 Only)

Arrest Category	Property Crime	Crimes Against Persons	Drug Crimes	Vehicle Code	Weapons Charges	Sex Crimes	Other	Total	% of the Sentenced M7 Population
Felony	1	634	0	0	4	34	0	673	83%
Misdemeanor	0	135	0	0	0	0	0	135	17%
Total	1	769	0	0	4	34	0	808	100%

\*Information contained is based on a snapshot of the daily inmate population every Tuesday.



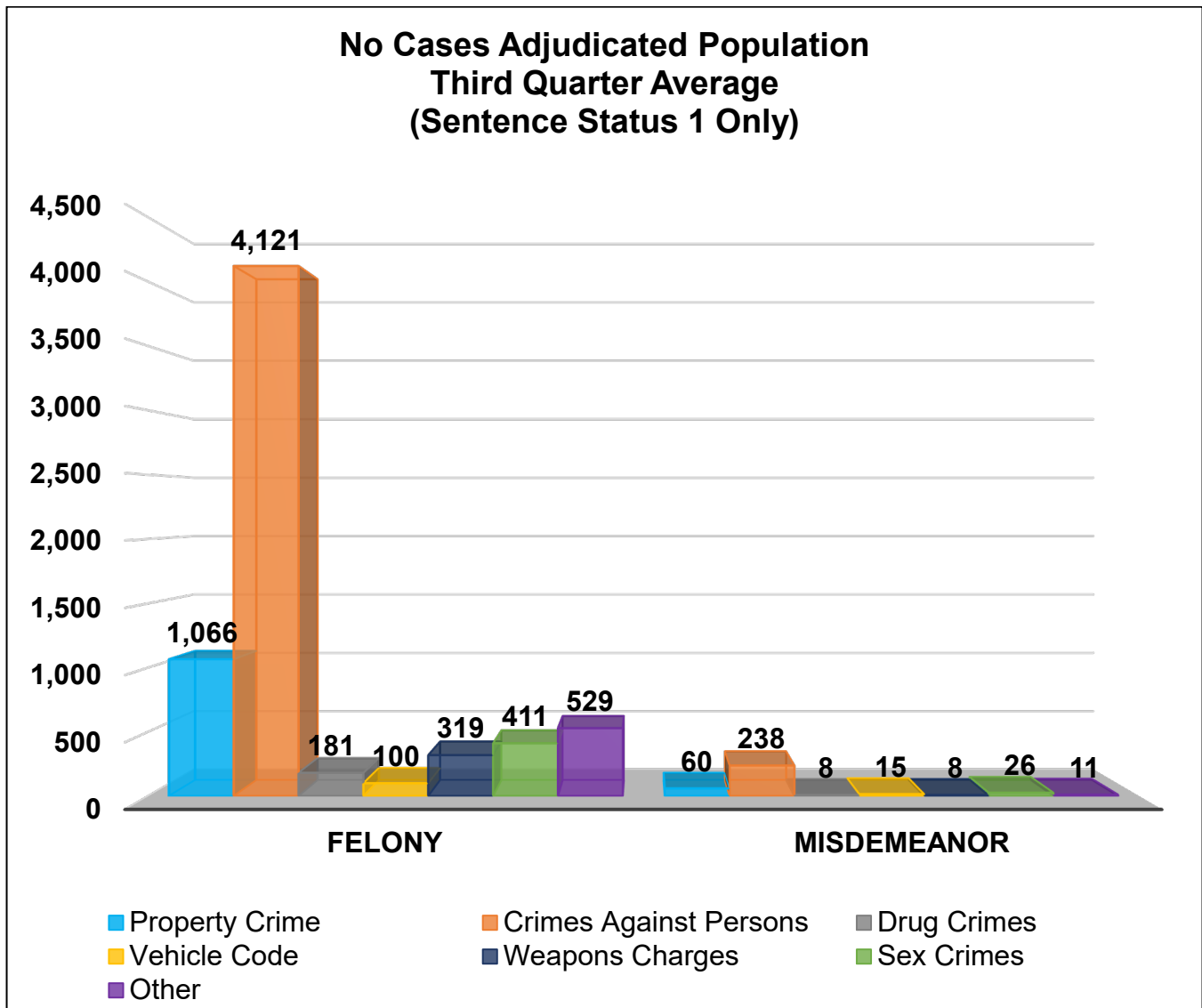
## NO CASES ADJUDICATED

The chart below provides a breakdown for the inmate population with an open case and have not been sentenced by the courts, along with court returnees.

### No Cases Adjudicated (Sentence Status 1 only)

Arrest Category	Property Crime	Crimes Against Persons	Drug Crimes	Vehicle Code	Weapons Charges	Sex Crimes	Other	Total	% of the Sentence Status 1 Population
Felony	1,066	4,121	181	100	319	411	529	6,727	95%
Misdemeanor	60	238	8	15	8	26	11	366	5%
Total	1,126	4,359	189	115	327	437	540	7,093	100%

\*Information contained is based on a snapshot of the daily inmate population every Tuesday.



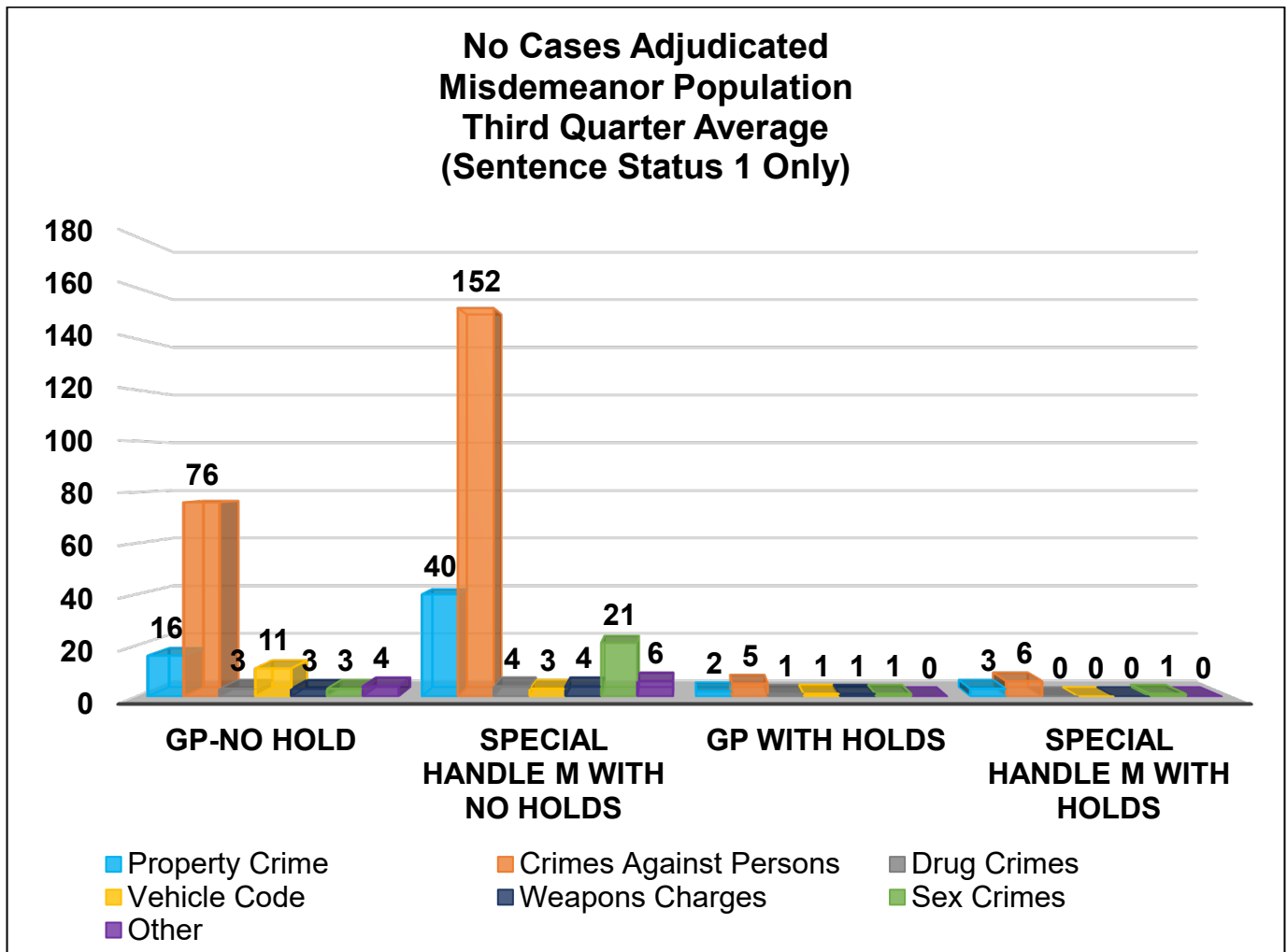
## **NO CASES ADJUDICATED MISDEMEANOR POPULATION**

The chart below provides a breakdown for the inmate population with open cases and have not been sentenced by the courts, along with court returnees, who are incarcerated for a misdemeanor and have not yet been convicted. "Holds" indicates the inmates are being held on a matter pending from an outside agency.

No Cases Adjudicated Misdemeanor Population (Sentence Status 1 only)

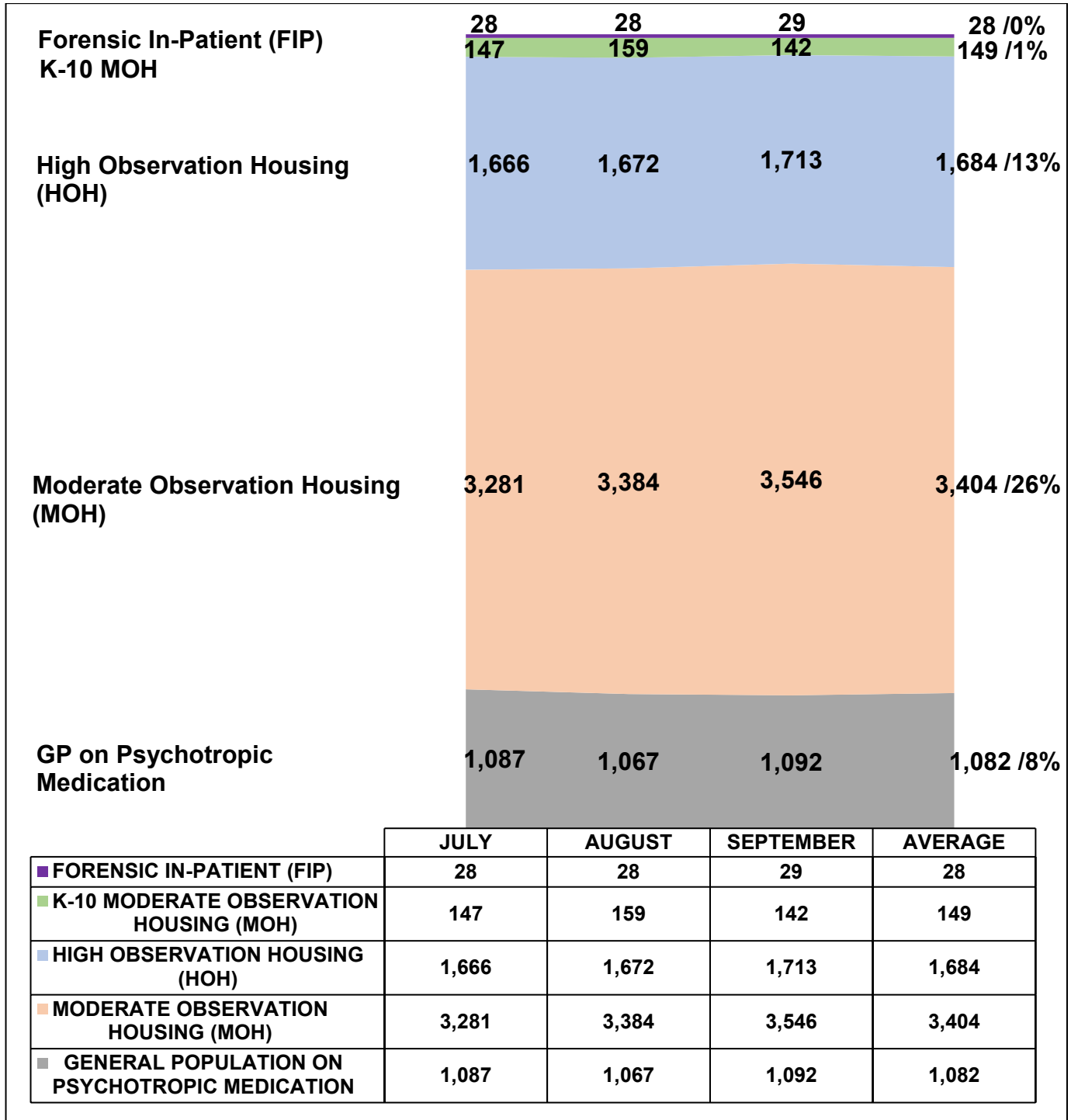
Arrest Category	Property Crimes	Crimes Against Persons	Drug Crimes	Vehicle Codes	Weapons Charges	Sex Crimes	Other	Total	% of the Sentence Status 1 Misd. Population
GP No Hold	16	76	3	11	3	3	4	116	31%
Special Handle M with No Holds	40	152	4	3	4	21	6	230	63%
GP with Holds	2	5	1	1	1	1	0	11	3%
Special Handle M with Holds	3	6	0	0	0	1	0	10	3%
<b>Total</b>	<b>61</b>	<b>239</b>	<b>8</b>	<b>15</b>	<b>8</b>	<b>26</b>	<b>10</b>	<b>367</b>	<b>100%</b>

\*Information contained is based on a snapshot of the daily inmate population every Tuesday.



## MENTAL HEALTH INMATE POPULATION

This quarter, the overall inmate population was 13,243, of which the mental health population averaged 6,347 and accounted for 48 percent. Inmates identified with mental health needs requiring specialized moderate or high observation housing account for 40 percent of the overall population. The remaining 8 percent have been treated and continue to receive psychotropic medication while housed in general population.



\*Information contained is based on a snapshot of the daily inmate population every Tuesday.

### **MISDEMEANOR INCOMPETENT TO STAND TRIAL (MIST)**

County jail houses inmates who are awaiting trial for misdemeanor charges who have been found to be incompetent to stand trial. This quarter, the average number of inmates on MIST is 163.

<b>Misdemeanor Incompetent to Stand Trial (MIST)</b>									
<b>July</b>			<b>August</b>			<b>September</b>			<b>Quarterly Average</b>
<b>Male</b>	<b>Female</b>	<b>Total</b>	<b>Male</b>	<b>Female</b>	<b>Total</b>	<b>Male</b>	<b>Female</b>	<b>Total</b>	
129	34	<b>163</b>	121	44	<b>165</b>	118	43	<b>161</b>	<b>163</b>

Information contained is based on a snapshot of the daily inmate population every Tuesday.

### **AMERICANS WITH DISABILITIES ACT (ADA)**

Americans with Disabilities Act housing is used to accommodate inmates with mobility limitations and/or physical disabilities. This quarter, the average number of inmates requiring ADA is 578, which is higher than last quarter's 550 total.

<b>Americans With Disabilities Act (ADA)</b>				
<b>Disability</b>	<b>July</b>	<b>August</b>	<b>September</b>	<b>Quarterly Average</b>
Seeing Impaired	12	9	8	10
Hearing Impaired	6	8	9	8
Wheelchair	181	177	204	187
Mobility Impaired	349	374	397	373
<b>Monthly Total</b>	<b>548</b>	<b>568</b>	<b>618</b>	<b>578</b>

Information contained is based on a snapshot of the daily inmate population every Tuesday.

\*Inmates with multiple mobility limitations and/ or physical disabilities are double counted in each group.

### **MEDICAL HOUSING**

Medical Outpatient/Specialty Housing (MOSH) is provided to inmates who require a level of medical treatment beyond that of stabilized medication distribution (pill call). The MOSH area in Men's Central Jail (MCJ) is also used to house inmates with mobility issues.

<b>Additional Medical Housing</b>				
<b>Housing Area</b>	<b>July</b>	<b>August</b>	<b>September</b>	<b>Quarterly Average</b>
Correctional Treatment Center (CTC)	105	109	108	107
Los Angeles County Medical Center (LCMC)	28	27	25	27
MCJ Medical/Clinic*	320	315	315	317
<b>Monthly Total</b>	<b>453</b>	<b>451</b>	<b>448</b>	<b>451</b>

Data are averages gathered from Facility Count Sheet every Tuesday.

\*Includes some ADA housing.

# **IN-CUSTODY PROGRAMS**

## LA COUNTY INMATE IN-CUSTODY PROGRAMS

The Los Angeles County jail offers several in-custody programs. They vary from in-custody work assignments, vocational job training, education, and life skill classes, as well as fire camp training and CDCR fire camp placement for AB109 inmates. Various programs awarded sentenced inmates additional time credits for their participation pursuant to the California Penal Code:

### CREDIT EARNINGS

Program	Penal Code	Credit Earned	Type of Inmate
<b>Sentenced GT/WT</b>	4019 PC	Day-for-Day (1:1)	All Sentenced Inmates
<b>Conservation</b>	4019.1 PC	One and one half-for One (1.5:1)	All Sentenced Inmates
<b>Fire Camp</b>	4019.2 PC	Two-for-One (2:1)	AB109 Sentenced Inmates
<b>Milestone*</b>	4019.4 PC	Up to 6 weeks per year	All Sentenced Inmates

\*Milestone credits are retroactively applied for unsentenced inmates.

### CONSERVATION WORK PROGRAM

The Conservation Work Program (CWP) requires inmates to complete their adjusted sentence while working in various job classifications, giving them the skills and work discipline necessary to increase their chances of success once released. Effective January 2015, all sentenced offenders, including TCS inmates are eligible to receive credits pursuant to Penal Code Section 4019.1. For this quarter, approximately 1,410 offenders (11% of the population) participated in CWP.

<b>CONSERVATION WORK PROGRAM (CWP)</b>				
Inmate Type	July	August	September	Quarterly Average
Participating Inmates	1,394	1,434	1,402	<b>1,410</b>

\*Information contained is based on a snapshot of the daily inmate population every Tuesday.

### EDUCATION BASED INCARCERATION PROGRAMS

The Education Based Incarceration (EBI) Program uses traditional and non-traditional education which is designed to reduce incarceration by increasing the educational, civic, social, economic, and life skills of its participants. Offenders who are sentenced are eligible to receive credit pursuant to Penal Code 4019.4. For this quarter, 44 milestone credits were awarded.

## **FIRE CAMP TRAINING PROGRAM**

Fire Camp Training and California Institute for Women (CIW) training are aligned under the CWP. This program is the first step of training before an inmate may participate in a state-facilitated Fire Camp program overseen by the CDCR. Offenders who are sentenced under AB109 are eligible to receive credits pursuant to Penal Code 4019.1. The average number of inmates enrolled in the Fire Camp training program for this quarter was 15.

<b>FIRE CAMP TRAINING CAMP</b>				
<b>Housing Type</b>	<b>July</b>	<b>August</b>	<b>September</b>	<b>Quarterly Average</b>
PDC Fire Camp Training (Men)	11	16	17	<b>15</b>
CIW Fire Camp Training (Women)	1	0	0	<b>0</b>
<b>Monthly Total</b>	<b>12</b>	<b>16</b>	<b>17</b>	<b>15</b>

## **CALIFORNIA DEPARTMENT OF CORRECTIONS AND REHABILITATION** **FIRE CAMP PROGRAM**

Once an inmate passes all necessary requirements in the Fire Camp training program located at Pitchess Detention Center (PDC) East facility, they are transferred to one of five state-contracted fire camp sites where they will serve the remainder of their adjusted sentence. Offenders who are sentenced under AB109 are eligible to receive credits pursuant to Penal Code 4019.2. The average number of inmates assigned to CDCR Fire Camp for this quarter was 6.

<b>CDCR FIRE CAMP</b>				
<b>Fire Camp Locations</b>	<b>July</b>	<b>August</b>	<b>September</b>	<b>Quarterly Average</b>
Acton Fire Camp	1	1	1	<b>1</b>
Francisquito Fire Camp	0	0	0	<b>0</b>
Holton Fire Camp	3	3	3	<b>3</b>
Julius Klein Fire Camp	1	1	0	<b>1</b>
Malibu Women's Fire Camp	0	1	1	<b>1</b>
<b>Monthly Total</b>	<b>5</b>	<b>6</b>	<b>5</b>	<b>6</b>

## **IN-CUSTODY SUBSTANCE TREATMENT AND REENTRY TRANSITION**

The jail-based Substance Treatment and Reentry Transition (START) treatment services provides substance use disorder (SUD) treatment services at the different jail facilities. Treatment services include screening, clinical assessment, group and individual counseling, case management services, medication-assisted treatment, re-entry planning and care coordination.

<b>In-Custody START (CRDF)</b>	<b>July</b>	<b>August</b>	<b>September</b>	<b>Quarterly Average</b>
Enrolled	157	174	186	<b>172</b>
Completed	20	21	26	<b>22</b>
<b>In-Custody START (MCJ)</b>	<b>July</b>	<b>August</b>	<b>September</b>	<b>Quarterly Average</b>
Enrolled	125	138	159	<b>141</b>
Completed	27	8	21	<b>19</b>
<b>In-Custody START (PDC)</b>	<b>July</b>	<b>August</b>	<b>September</b>	<b>Quarterly Average</b>
Enrolled	243	261	237	<b>247</b>
Completed	28	56	45	<b>43</b>
<b>In-Custody START (TTCF)</b>	<b>July</b>	<b>August</b>	<b>September</b>	<b>Quarterly Average</b>
Enrolled	70	106	89	<b>88</b>
Completed	6	19	13	<b>13</b>

# **ALTERNATIVES TO CUSTODY PROGRAMS**

## **ALTERNATIVES TO CUSTODY PROGRAMS**

The Community Transition Unit (CTU), the Community Based Alternatives to Custody (CBAC) unit, and the Compliance Team work together by utilizing a variety of alternatives to custody programming options in an effort to enhance an inmate's chances of success upon release. These programs are conducted in collaboration with local agencies including community and faith-based organizations, Department of Mental Health (DMH), Department of Public Health (DPH) and other organizations. It is the Department's goal to program inmates from intake through re-entry into the community. With this approach, the Department hopes to increase public safety and reduce the rate of recidivism.

Supported by release planning overseen by the CTU, and in partnership with contracted services, inmates are provided re-entry assistance through linkages to services that are initiated while they are in-custody and continued upon release. Through the Alternatives to Custody (ATC) programs, qualifying inmates are afforded the opportunity to complete the remaining portion of their sentence in a community treatment program. Inmates who do not qualify for ATC due to security or other reasons are referred to community providers for re-entry assistance.

The ATC programs include:

### **SUBSTANCE TREATMENT AND REENTRY TRANSITION PROGRAM**

The Substance Treatment and Reentry Transition (START) program is a DPH and Substance Abuse Prevention Control (SAPC) funded program that places eligible male and female inmates into residential Substance Use Disorder (SUD) treatment programs on electronic Global Positioning System monitoring as an ATC program.

### **SPECIALIZED TREATMENT FOR OPTIMIZED PROGRAMMING PROGRAM**

The Specialized Treatment for Optimized Programming (STOP) program is a collaborative initiative between the Justice, Care and Opportunities Department (JCOD) and LASD. The program places eligible inmates into community-based housing and individualized rehabilitation services to promote safe re-entry into the community and reduce recidivism. All participants are on GPS monitoring.

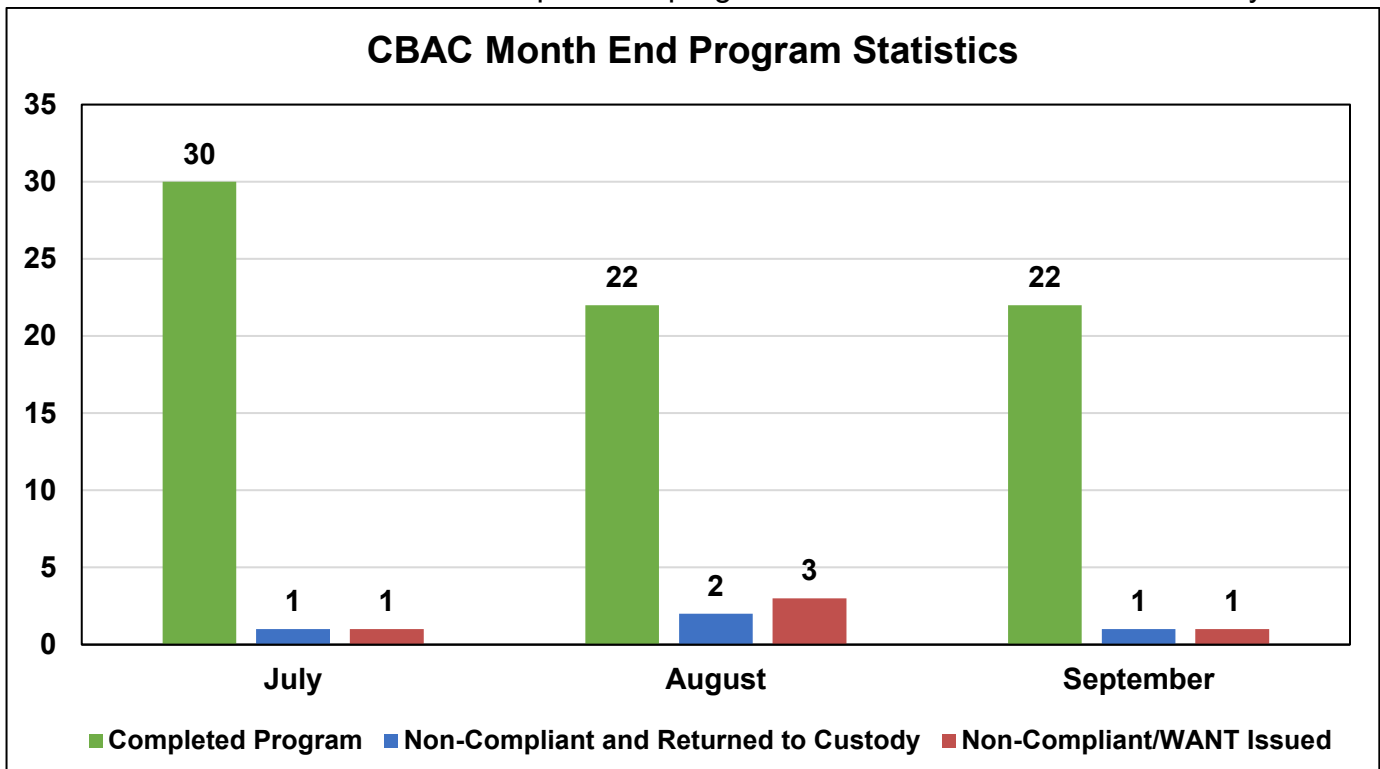
<b>Program Quarterly Statistics</b>	<b>Enrolled</b>	<b>Completed</b>	<b>Returned to Custody</b>	<b>Absconded</b>
START Program	11	14	1	0
STOP Program	11	4	0	1

## COMMUNITY BASED ALTERNATIVES TO CUSTODY

The Population Management Bureau's (PMB) Community Based Alternatives to Custody (CBAC) unit identifies qualified, low risk, sentenced offenders within the jail population to finish their remaining sentence in an out-of-custody alternative environment. Although these individuals are outside of traditional custody, they are still under the jurisdiction of the Department.

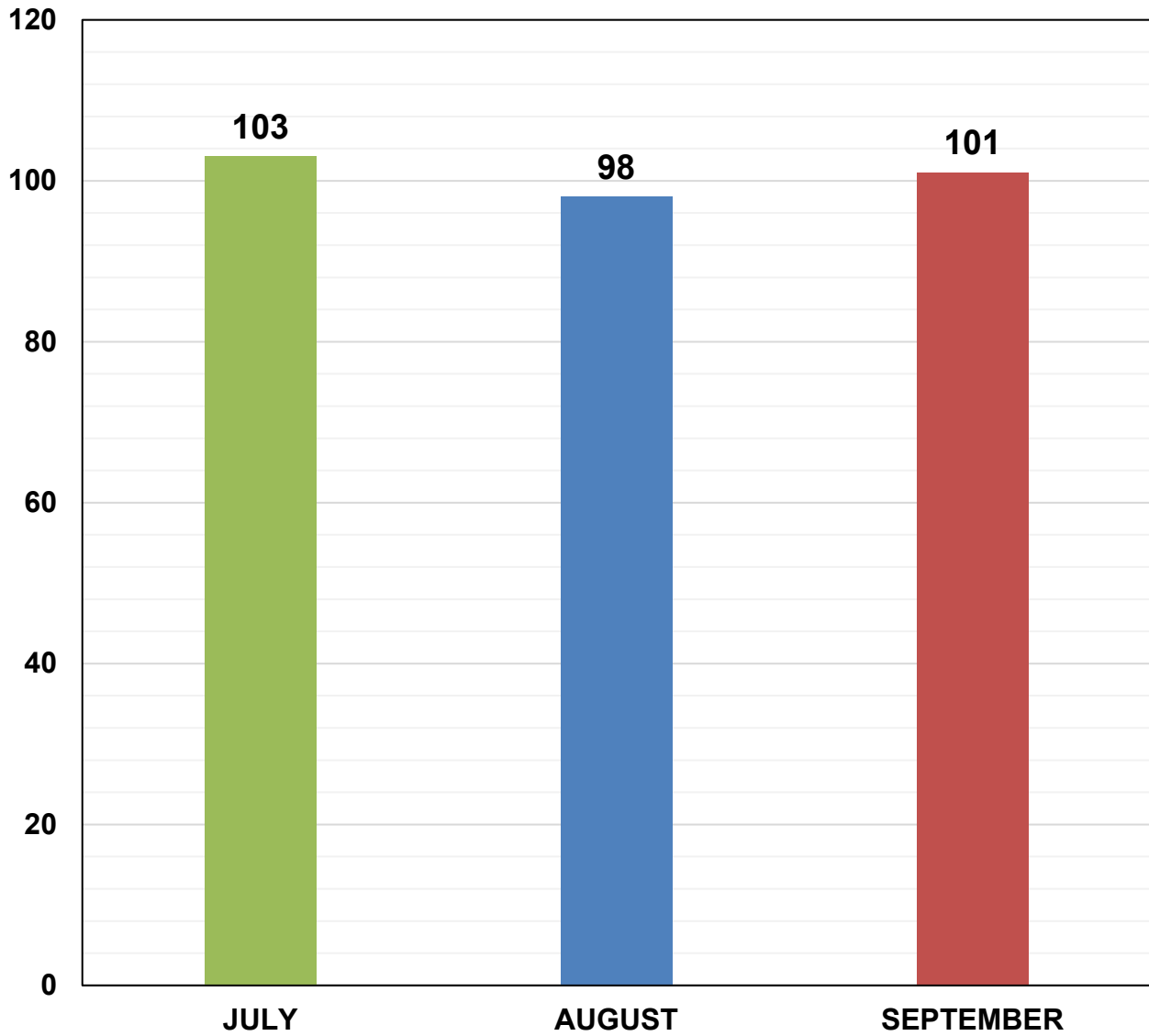
CBAC Monthly Placement									
Program	July			August			September		
	Male	Female	Total	Male	Female	Total	Male	Female	Total
Electronic Monitoring Program	12	0	<b>12</b>	6	2	<b>8</b>	3	0	<b>3</b>
Weekender Work Program	3	0	<b>3</b>	8	0	<b>8</b>	4	0	<b>4</b>
Work Release Program	5	2	<b>7</b>	9	3	<b>12</b>	6	3	<b>9</b>
<b>Monthly Total</b>	<b>20</b>	<b>2</b>	<b>22</b>	<b>23</b>	<b>5</b>	<b>28</b>	<b>13</b>	<b>3</b>	<b>16</b>

The graph below depicts the total number of offenders who successfully completed the remainder of their sentence on a CBAC program. It shows the number of offenders who failed to complete the program, and with the efforts of the PMB Compliance Unit, returned to finish their sentence. It also shows those who failed to complete the program and were not returned to custody.



**LA COUNTY ALTERNATIVES TO CUSTODY INMATE POPULATION**

**Third Quarter 2025  
Los Angeles County Alternatives to Custody Inmate Count**



<b>2025 Quarterly ATC Average Daily Inmate Population (ADIP)*</b>
101

\*Includes Community Based Alternatives to Custody (CBAC), Fire Camp and inmate station workers.

# **RE-ENTRY ASSISTANCE**

## COMMUNITY RE-ENTRY AND RESOURCE CENTER

The information below represents recently released inmates and inquiries and/or contacts made by the general public who have been assisted with services at the Community Re-entry and Resource Center (CRRC) for the third quarter of 2025.

Inquiry Demographic Population	July	August	September	Total	Average
General Release	695	737	731	<b>2,163</b>	<b>721</b>
General Public	69	83	106	<b>258</b>	<b>86</b>
Alternatives to Custody Program	2	1	11	<b>14</b>	<b>5</b>
Work Release Program	0	0	0	<b>0</b>	<b>0</b>
Coordinated Release	35	18	26	<b>79</b>	<b>26</b>
<b>Monthly Total</b>	<b>801</b>	<b>839</b>	<b>874</b>	<b>2,514</b>	<b>838</b>

Inquiry Demographic Gender	July	August	September	Total	Average
Male	683	672	646	<b>2,001</b>	<b>667</b>
Female	156	219	239	<b>614</b>	<b>205</b>
<b>Monthly Total</b>	<b>839</b>	<b>891</b>	<b>885</b>	<b>2,615</b>	<b>872</b>

Community Transition Unit (CTU) personnel visit the Inmate Reception Center release area to educate and remind inmates waiting to go home about services available at the CRRC. Walks of the release area are performed every 90 minutes.

	July	August	September	Total	Average
Number of 90 Minute Contact Walks	115	100	94	<b>309</b>	<b>103</b>
Number of Inmates Contacted	930	999	927	<b>2,856</b>	<b>952</b>
Number of Flyers Distributed	930	999	927	<b>2,856</b>	<b>952</b>

### CTU COORDINATED RELEASES TO VARIOUS PROGRAMS

The final 90 days leading to an inmate's release from custody are the most critical in ensuring a successful transition from custody to Community Based Organization (CBO) treatment centers. During the time leading up to their release, inmates are interviewed several times by the CBO staff and members of the CTU to ensure that they are matched up with a suitable treatment provider.

The coordinated release process helps to create trust between law enforcement, inmate participants and the CBOs. The CTU's goal is to provide a successful recovery and re-entry into the community and to ultimately decrease recidivism.

	July	August	September	Total	Average
Coordinated Release	35	33	43	<b>111</b>	<b>37</b>

## CTU VITAL RECORDS

Through the Vital Records Program, Department staff members have been deputized by the County Registrar-Recorder to facilitate birth certificate applications for inmates born in Los Angeles County who have requested a certified copy. The fee of \$32 for certified copies of birth certificates is funded by the Inmate Welfare Fund.

All inmates in custody may apply for a replacement California Identification Card. The issued IDs are provided to the inmates upon their release. The inmates must still report to the California Department of Motor Vehicles (DMV) to obtain a driver's license following their release.

Records Processed	July	August	September	Quarterly Total	Quarterly Average
DMV - California Identification Card	60	51	50	161	54
Records – Birth Certificate	46	92	43	181	60
<b>Total</b>	<b>106</b>	<b>143</b>	<b>93</b>	<b>342</b>	<b>114</b>

Records Issued	July	August	September	Quarterly Total	Quarterly Average
DMV - California Identification Card	0	44	19	63	21
Records – Birth Certificate	0	78	69	147	49
<b>Total</b>	<b>0</b>	<b>122</b>	<b>88</b>	<b>210</b>	<b>70</b>