



CUSTODY DIVISION POPULATION QUARTERLY REPORT

April - June 2025

Los Angeles County Sheriff's Department

Robert G. Luna, Sheriff

TABLE OF CONTENTS

Executive Summary.....	3
1. Population Trends.....	4
Los Angeles County Inmate Population Graph	
Monthly Average Daily Inmate Population (ADIP) Trend	
Arrests, Bookings, and Releases	
Release Practices	
Proposition 36 In-Custody Population	
Homeless and Veteran	
2. Facilities Overview.....	11
Rated Capacities - Board of State and Community Corrections (BSCC)	
Jail Housing Facilities	
Men's Central Jail (MCJ)	
Twin Towers Correctional Facility (TTCF)	
Century Regional Detention Facility (CRDF)	
Pitchess Detention Center (PDC) – East	
Pitchess Detention Center (PDC) – North	
Pitchess Detention Center (PDC) – South	
North County Correctional Facility (NCCF)	
3. Population Overview.....	18
Inmate Population Demographics	
Inmate Population Offender Age Groups	
Jail Population by Security Level	
Inmate Population Breakdown	
Crime Classification Statistics	
Inmates with M7 (Assaultive Charges)	
No Cases Adjudicated	
No Cases Adjudicated Misdemeanor Population	
Mental Health Inmate Population	
Misdemeanor Incompetent to Stand Trial (MIST)	
Americans with Disabilities Act (ADA)	
Medical Housing	
4. In-Custody Programs.....	31
Credit Earnings	
Conservation Work Program (CWP)	
Education Based Incarceration Program (EBI-Milestone)	
Fire Camp Training Program	
California Department of Corrections and Rehabilitation (CDCR) Fire Camp Program	
In-Custody Substance Treatment and Reentry Transition (START) Program	

5. Alternatives to Custody (ATC) Programs.....	35
Community Transition Unit (CTU)	
Substance Treatment and Reentry Transition (START)	
Female Programs	
Veteran's Administration (VA)	
Community Based Alternatives to Custody (CBAC)	
Los Angeles County ATC Inmate Population Graph	
6. Re-Entry Assistance.....	39
Community Re-Entry and Resource Center (CRRC)	
CTU Coordinated Releases to Various Programs	
CTU Vital Records	

EXECUTIVE SUMMARY

The Los Angeles County Sheriff's Department (Department) is committed to maintaining a secure and constitutional jail system. As part of this effort, a periodic report is essential to better understand and quantify population trends. This ***Custody Division Population Quarterly Report*** summarizes data collected during the second quarter of 2025 and is produced by the Population Management Bureau (PMB) Analysis Unit.

The Average Daily Inmate Population (ADIP) in the Los Angeles County (County) jail system during the second quarter of 2025 was 13,036. This is higher than the second quarter of 2024 average of 12,428.

To manage the inmate population, the Department continued to use percentage release. The short sentence releases have remained at 240 days since July 24, 2022. Inmates serving traditional county sentences completed 10 percent of their court ordered sentences. Inmates serving sentences for felony serious and/or violent offenses (M7 charges) served 100 percent of their sentences, minus any time credits earned. Inmates sentenced under 1170 PC (AB109) served 100 percent of their sentences, minus any time credits earned.

On October 1, 2023, Pre-Arrestment Release Protocols (PARP) were initiated for arrestees with non-violent, non-serious felonies and misdemeanors. PARP has diverted many arrestees that would have otherwise entered the county jail system.

Proposition 36, known as The Homelessness, Drug Addiction, and Theft Reduction Act, took effect on December 18, 2024. This modified existing laws and added substantive charges and enhancements to areas of the Penal Code and Health and Safety Code regarding theft, property damage, and drug-related crimes. The Superior Court of California issued an addendum making some of the charges Magistrate Review (MR), which will result in more inmates being held in the county jail.

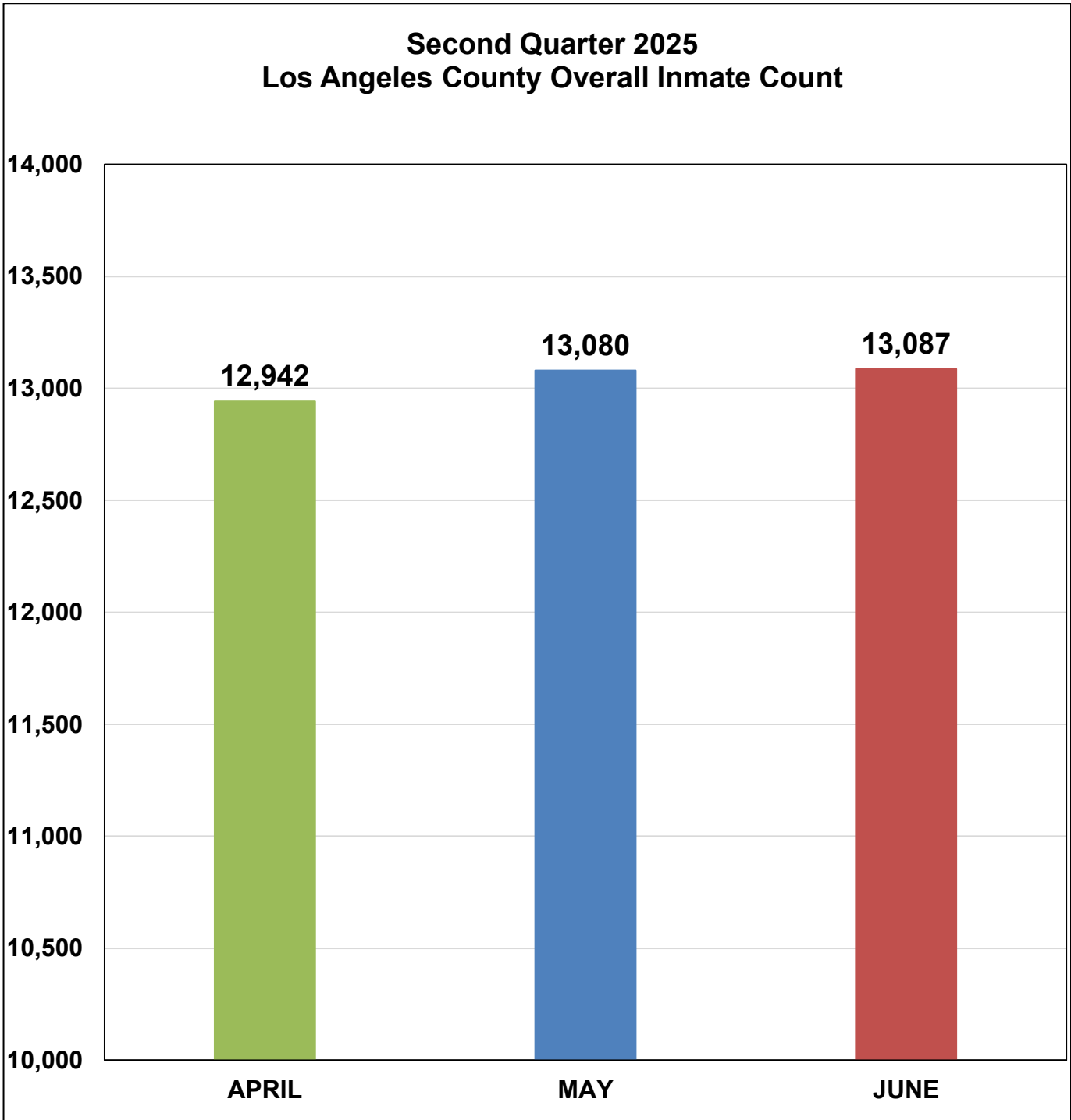
The Traditional County Sentenced (TCS) population this quarter was approximately 992, higher than last quarter's total of 883. The number of inmates sentenced under 1170 PC was approximately 943, which is higher than last quarter's total of 850.

The mental health population increased from 5,861 last quarter to 6,044 this quarter and comprised 46 percent of the total inmate population. During the second quarter of 2024, the mental health population was 5,347 and comprised 42 percent of the total inmate population.

Information encompassed in this report/document depicts data related to a specific date and time. Data may differ based on numerous factors related to an inmate's status, disposition, facility, etc. Information may differ based on systems queried, archived information, date/time parameters or numerous other factors. Information in disparate reports should not be combined as data sets may be inconsistent in queries and responses.

POPULATION TRENDS

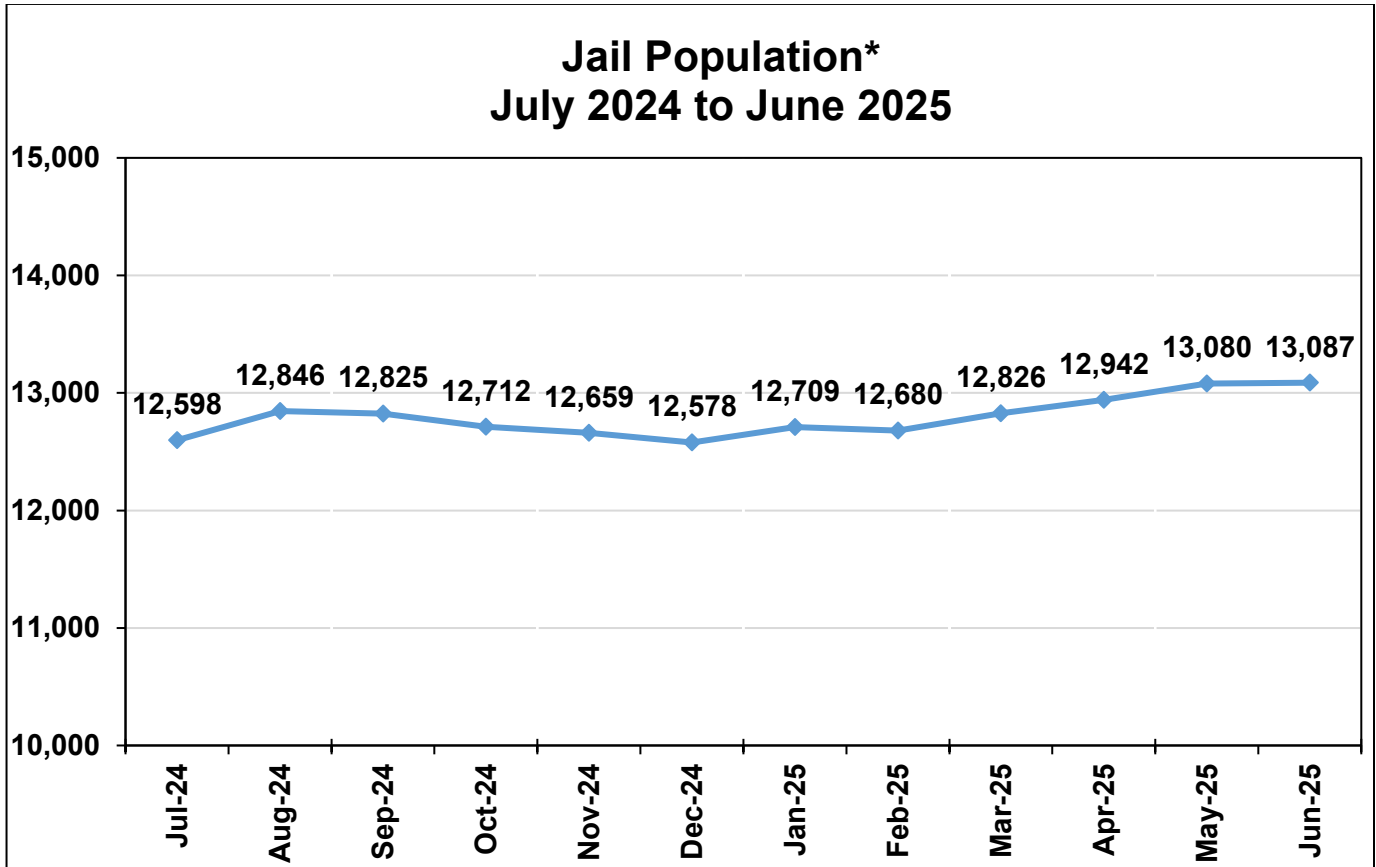
LASD INMATE POPULATION



2025 Quarterly Overall Division Average Daily Inmate Population (ADIP) *
13,036

**Quarterly Division ADIP reflects all inmates processed into IRC, excluding ATC.*

MONTHLY ADIP TREND



Yearly ADIP Comparison		
Year	ADIP	Notes
2011	15,014	(October - AB109 enacted)
2012	18,043	
2013	18,687	
2014	18,681	(November - Prop 47)
2015	17,049	
2016	16,613	
2017	17,024	
2018	16,910	
2019	17,070	
2020	14,212	(March - COVID-19, June - Zero Bail enacted)
2021	14,577	
2022	13,807	(June - Zero Bail ended)
2023	13,241	(May - Zero Bail enacted, October - PARP enacted)
2024	12,561	(December - Prop 36)
2025	12,887	Data collected through June 2025

*Excludes Alternatives to Custody

SECOND QUARTER 2025 - ARREST AND BOOKING STATS

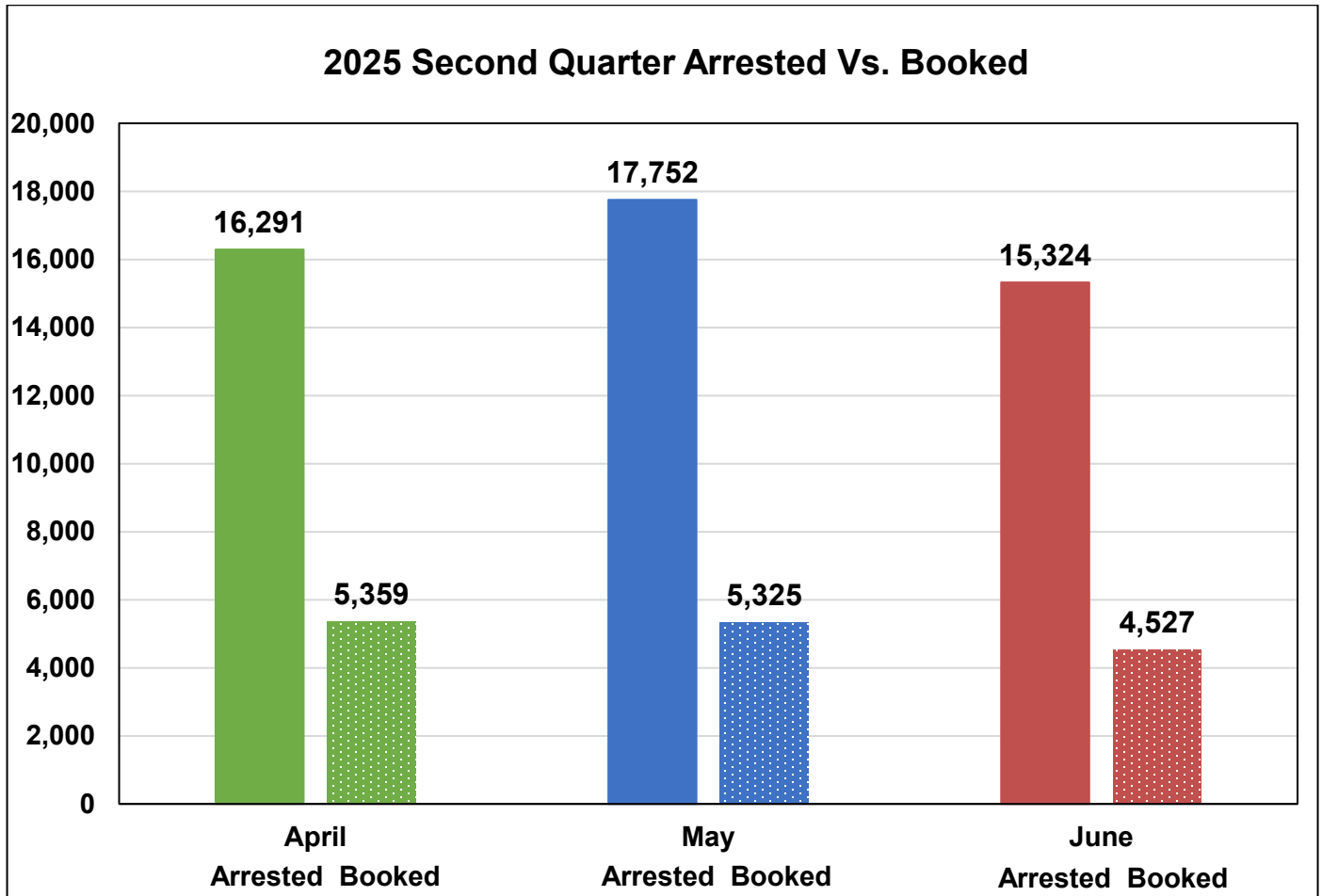
Arrest activity increased 9% to 49,367 versus the last quarter (45,441). The number of inmates booked into the County jail this quarter increased 3% to 15,211 versus last quarter (14,833).

	April		May		June		Quarterly Total	Quarterly Average	Quarterly %
	Monthly Total	%	Monthly Total	%	Monthly Total	%			
Felony	8,078	50%	8,602	49%	7,390	49%	24,070	8,023	49%
Misdemeanor	8,169	50%	9,087	51%	7,883	51%	25,139	8,380	51%
Other*	44	0%	63	0%	51	0%	158	53	0%
Total Arrested	16,291		17,752		15,324		49,367	16,456	100%
Total Booked into LA County	5,359	33%	5,325	30%	4,527	30%	15,211	5,070	31%

*Other includes child welfare, delinquent, infraction, and non-specific charges.

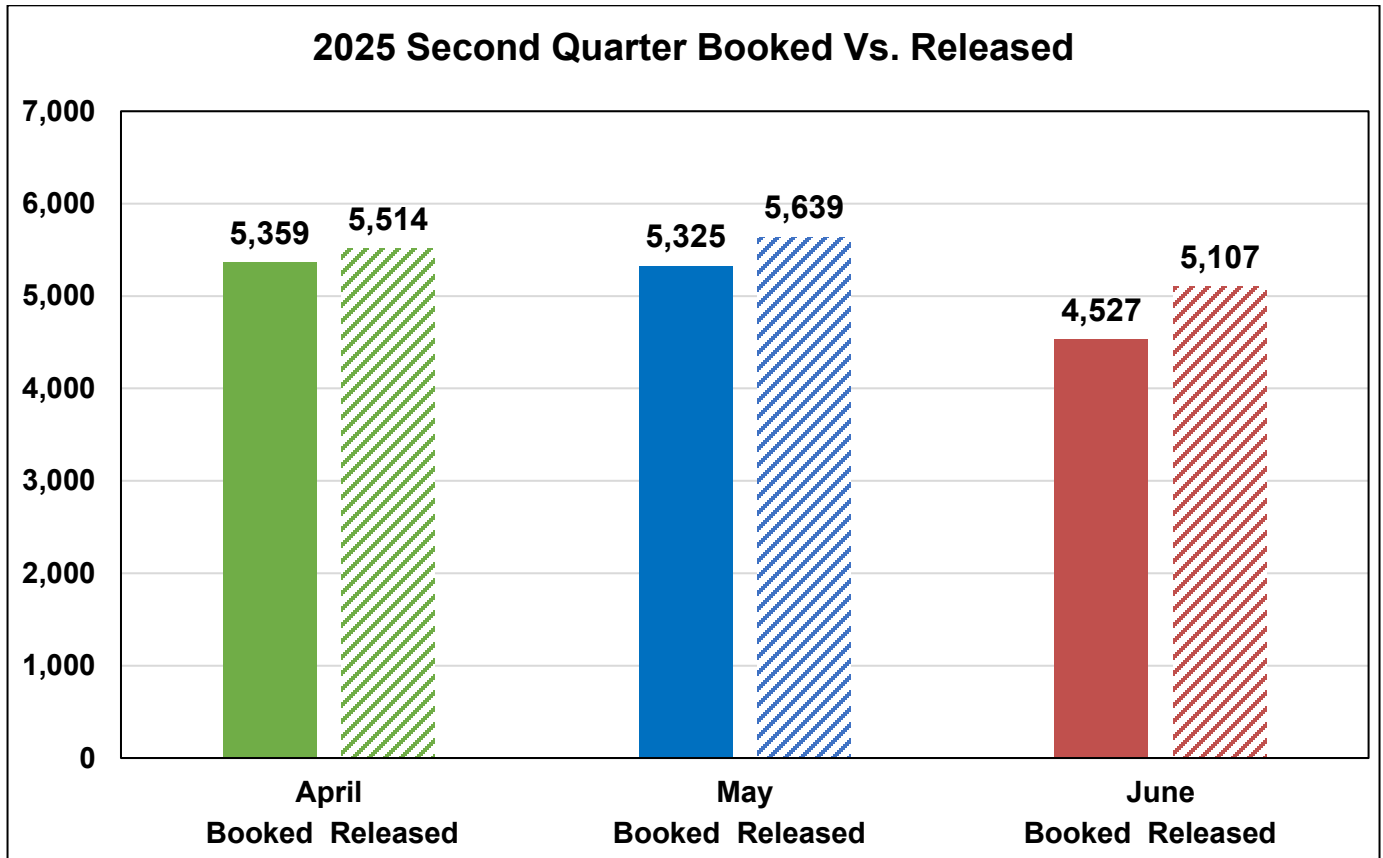
SECOND QUARTER 2025 - ARRESTS VS. BOOKINGS

The graph below compares the total arrests and bookings for this quarter.



SECOND QUARTER 2025 – BOOKINGS VS. RELEASES

The Department averaged approximately 5,420 releases this quarter. This is a 6% increase compared to last quarter's average of 5,096 releases.



COUNTY JAIL RELEASE PRACTICES

To manage the inmate population, traditional county sentenced inmates were subject to early release under the following conditions. In 2020, additional release measures were implemented to help mitigate the spread of COVID-19. These measures included increasing the number of days credited toward early release for short-term sentences and reducing the percent releases to 10%. These accelerated release policies have remained in effect to date in order to maintain a reduced inmate population.

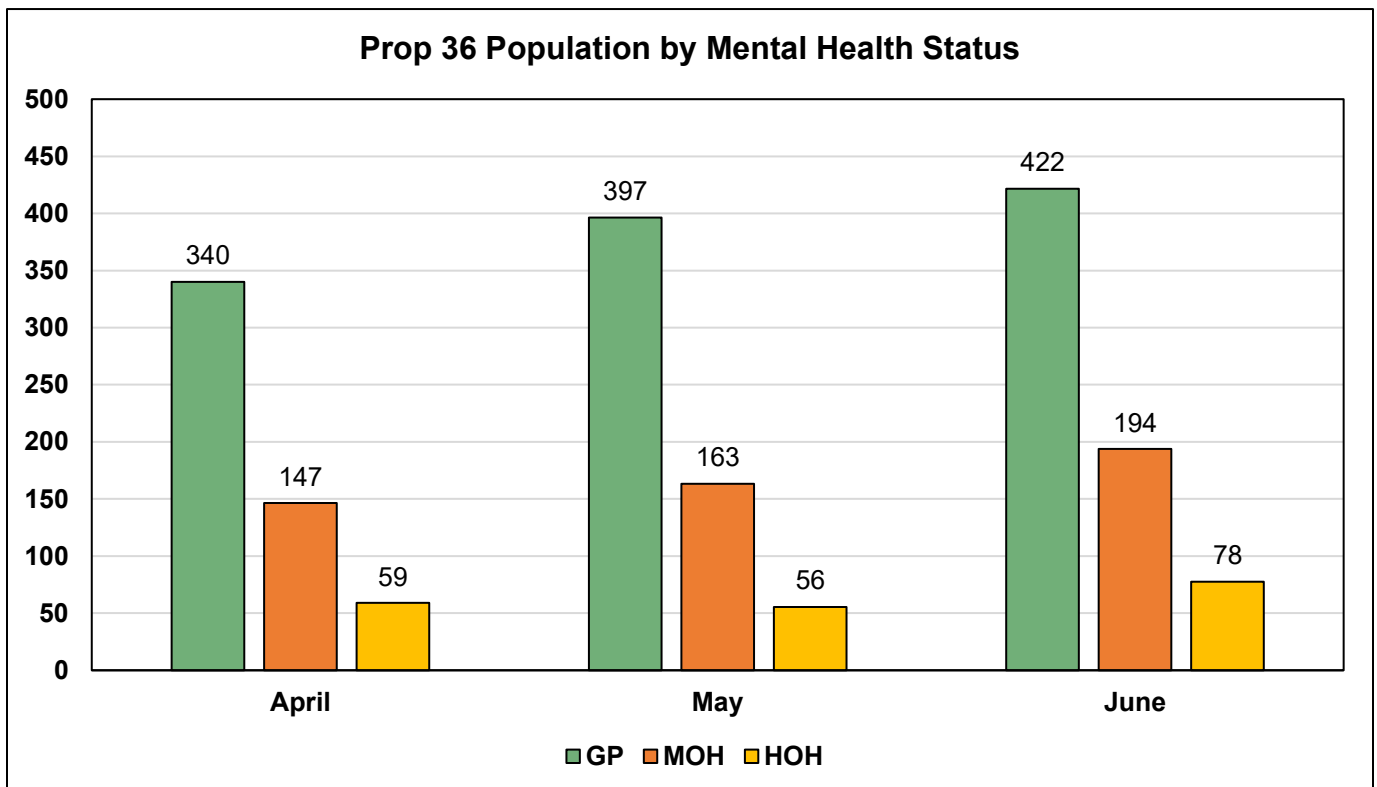
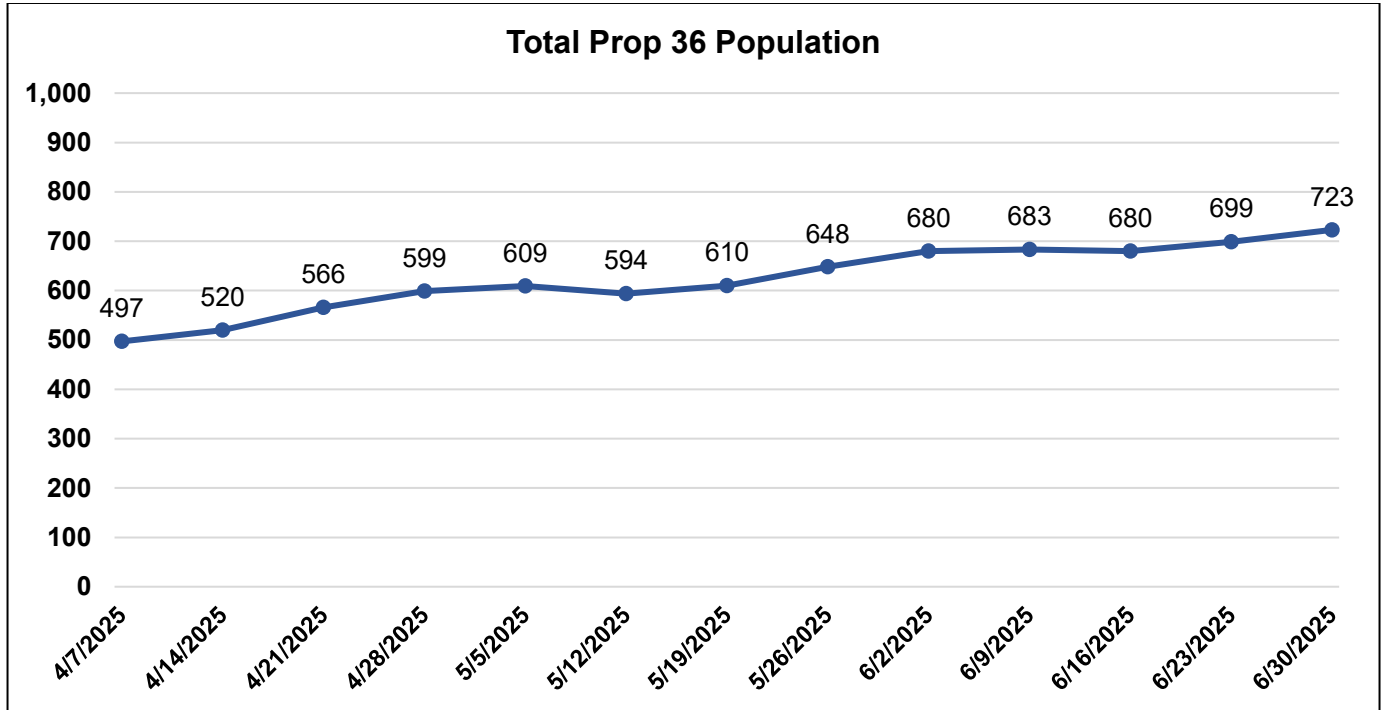
Month	Release Criteria		M7 Release Criteria ¹		Short Sentence ²	
	Male	Female	Felony	Misdemeanor	Male	Female
April	10%	10%	100%	100%	240 days	240 days
May	10%	10%	100%	100%	240 days	240 days
June	10%	10%	100%	100%	240 days	240 days

¹ Inmates classified as M7 have sentences for designated serious and/or violent offenses or have notoriety in the community, which requires their record jacket to go through extra security checks upon release from LASD's custody.

² Shorts are inmates sentenced to a term in county jail, which after all legal credits are awarded and the current jail percentage time is considered, are immediately released from LASD's custody after processing from court.

PROPOSITION 36 IN-CUSTODY POPULATION

On December 18, 2024, Proposition 36 took effect, modifying existing laws and adding substantive charges and enhancements to sections of the Penal Code and Health and Safety Code related to theft, property damage, and drug crimes.



* Monthly averages are gathered every Monday.

HOMELESS

The chart below provides an average breakdown of the homeless inmate population who stated they were homeless by gender, major race, and age category. The homeless inmates comprised 28% of the total population.¹

	April	May	June	Average
Male	3,205	3,283	3,312	3,267
Female	410	418	418	415
Total	3,615	3,701	3,730	3,682

	April	May	June	Average
Hispanic	1,921	1,976	1,982	1,960
Black	1,085	1,103	1,112	1,100
White	494	513	520	509
Other	115	109	116	113
Total	3,615	3,701	3,730	3,682

	April	May	June	Average
18 to 25	427	425	423	425
26 to 34	1,306	1,336	1,342	1,328
35 to 39	684	673	664	674
40 to 44	464	500	507	490
45 & Older	734	767	794	765
Total	3,615	3,701	3,730	3,682

¹ Homeless data is collected from COMPAS based on a snapshot of the inmate population collected each business day. These are numbers based upon self-identification and have not been confirmed.

VETERAN

The chart below provides an average breakdown of the veteran inmate population who stated they have served in the United States Military by gender, major race, and age category. The veteran inmates comprised 1% of the total population.²

	April	May	June	Average
Male	164	171	179	171
Female	6	8	9	8
Total	170	179	188	179

	April	May	June	Average
Hispanic	54	54	53	54
Black	60	66	69	65
White	48	51	57	52
Other	8	8	9	8
Total	170	179	188	179

	April	May	June	Average
18 to 25	11	11	12	11
26 to 34	39	39	38	39
35 to 39	30	32	32	31
40 to 44	30	29	29	30
45 & Older	60	68	77	68
Total	170	179	188	179

² Veteran data is collected from COMPAS based on a snapshot of the inmate population collected each business day. These are numbers based upon self-identification and have not been confirmed by the Veterans Administration.

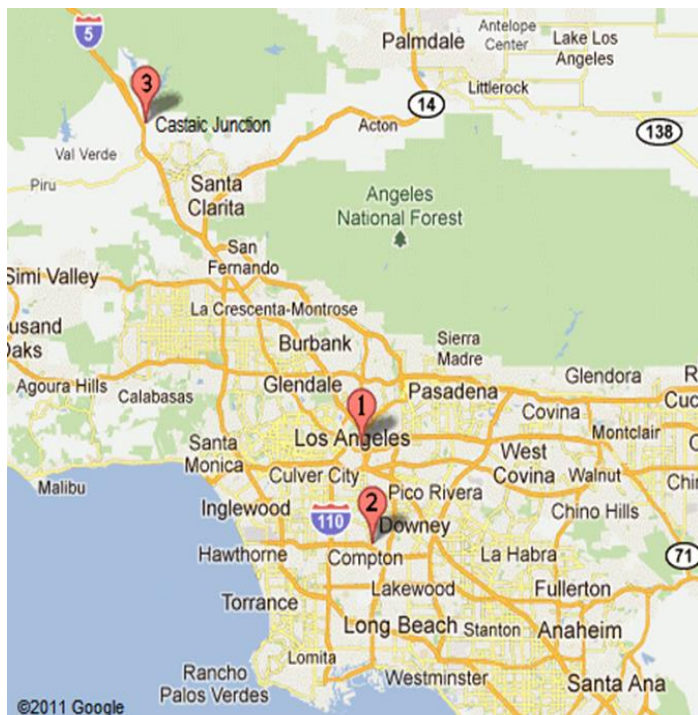
FACILITIES OVERVIEW

RATED CAPACITY

The Board of State and Community Corrections (BSCC) is a government body which recommends capacity limits for county jails. The BSCC conducts biennial jail inspections; the Department was rated in November 2023. The BSCC does not rate processing, medical and discipline beds.

Board of State and Community Corrections				
LASD Custody Facilities	BSCC Rated Capacity	Quarterly Facility ADIP	Above BSCC Rated Capacity	% Over BSCC Capacity
Men's Central Jail	3,512	3,641	129	4%
Men's Central Jail Outpatient Clinic	Unrated	321	-	-
Twin Towers Correctional Facility	2,432	2,465	33	1%
Correctional Treatment Center	Unrated	108	-	-
Century Regional Detention Facility	1,708	1,401	-307	-18%
CRDF Reception Center	Unrated	2	-	-
Pitchess Detention Center – East	926	10	-916	-99%
Pitchess Detention Center – North	830	1,282	452	54%
Pitchess Detention Center – South	782	508	-274	-35%
North County Correctional Facility	2,214	3,078	864	39%
Inmate Reception Center	Unrated	197	-	-
LCMC Jail Wards	Unrated	24	-	-
Total BSCC Rated Capacity*	Rated Quarterly Facility ADIP	Total Above BSCC Rated Capacity	Total % Over BSCC Capacity	Total % Over BSCC Capacity Excluding East Facility
12,404	12,385	-19	0%	8%

*Statistical data gathered from *Board of State and Community Corrections Inspection Report 11/2023*



LA County Jail Facilities

- 1**
- Men's Central Jail (MCJ)
- Twin Towers Correctional Facility (TTCF)
- Los Angeles County Medical Center (LCMC)
- Correctional Treatment Center (CTC)
- Inmate Reception Center (IRC)
- 2**
- Century Regional Detention Facility (CRDF)
- 3**
- PDC East Facility
- PDC North Facility
- PDC South Facility
- North County Correctional Facility (NCCF)

JAIL HOUSING FACILITIES

MEN'S CENTRAL JAIL TOTAL INMATE POPULATION 2025					
Security Level	April	May	June	Quarterly Average	% of Population
Security Level Low 1-4	419	423	403	415	10%
Security Level Medium 5-7	2,236	2,090	2,062	2,129	54%
Security Level High 8-9	1,400	1,440	1,483	1,441	36%
Facility Total	4,055	3,953	3,948	3,985	100%
SUBPOPULATION HOUSED THROUGHOUT FACILITY ¹					
Housing Type	April	May	June	Quarterly Average	
Administratively Segregated (K-10) ²	30	28	28	29	
Restrictive Housing (K-17, K-18, K-19, K-20) ³	291	279	281	284	
Americans with Disabilities Act (ADA)	304	314	337	318	
Discipline	66	61	61	63	
General Population on Psychotropic Meds	372	350	344	355	
Inmate Workers	321	271	234	275	
LGBTQ+ (K-6G)	290	298	310	299	
Medical/Clinic	329	320	321	323	
Other (K-6T/B) ⁵	219	213	237	223	
Pro-Per	42	41	39	41	
EBI / START	86	86	93	88	
Mentally Ill – Moderate Observation / Service Area (MOH) [†]	934	938	985	952	
Sexually Violent Predators	2	2	2	2	
Sex Crimes Against Children (K-6Y)	473	473	476	474	
Developmentally Disabled	6	5	5	5	

¹ Subpopulation housed throughout facility includes those who are classified with special housing needs and are included in the total inmate population. An inmate may belong to more than one subpopulation.

² K-10 Administratively segregated for various reasons including danger to self or others.

³ K-17 Disruptive; K-18 Protective Custody; K-19 Major Disruptive; K-20 Highly Dangerous.

⁴ K-1 Law Enforcement relation in custody. K-1 inmates were moved from MCJ to Towers as of July 9, 2024

⁵ K-6T Contempt of court, K-6B threatened by others.

* Statistical data are averages gathered from Facility Count Sheet every Tuesday.

TWIN TOWERS CORRECTIONAL FACILITY TOTAL INMATE POPULATION 2025					
Security Level	April	May	June	Quarterly Average	% of Population
Security Level Low 1-4	212	217	233	221	9%
Security Level Medium 5-7	1,626	1,680	1,680	1,662	64%
Security Level High 8-9	693	711	732	712	27%
Facility Total	2,531	2,608	2,645	2,595	100%

SUBPOPULATION HOUSED THROUGHOUT FACILITY ¹				
Housing Type	April	May	June	Quarterly Average
Administratively Segregated (K-10) ²	82	77	80	80
Restrictive Housing (K-17, K-18, K-19, K-20) ³	158	158	166	161
Administratively Segregated (K-1) ⁴	7	8	9	8
Administratively Segregated (K-6B) ⁵	187	206	216	203
Americans With Disabilities (ADA)	207	193	186	195
Discipline	11	13	13	12
Female Medical (CTC)	12	14	13	13
General Population on Psychotropic Meds Security Level 1-4	8	11	13	11
General Population on Psychotropic Meds Security Level 5-7	168	171	168	169
General Population on Psychotropic Meds Security Level 8-9	74	73	81	76
LGBTQ+ (K-6G)	93	90	85	89
Education Based Incarceration (EBI)	130	118	126	125
Veterans	32	24	35	30
Medical (CTC)	100	92	93	95
Mentally Ill – High Observation Housing (HOH)	1,237	1,295	1,382	1,305
Mentally Ill – Moderate Observation / Service Area (MOH)	3,076	3,061	3,142	3,093
Sexually Violent Predators	1	0	0	0
Mentally Ill – Moderate Observation Housing (MOH) Sex Crimes Against Children (K-6Y)	67	67	76	70

Subpopulation housed throughout facility includes those who are classified with special housing needs and are included in the total inmate population. An inmate may belong to more than one subpopulation.

² K-10: Administratively segregated for various reasons including danger to self or others.

³ K-17: Disruptive; K-18: Protective Custody; K-19: Major Disruptive; K-20: Highly Dangerous.

⁴ K-1 Law Enforcement relation in custody.

⁵ K-6B: Administratively segregated are at risk of assault in GP housing.

* Statistical data are averages gathered from Facility Count Sheet every Tuesday.

CENTURY REGIONAL DETENTION FACILITY TOTAL INMATE POPULATION 2025					
Security Level	April	May	June	Quarterly Average	% of Population
Security Level Low 1-4	205	188	182	192	13%
Security Level Medium 5-7	1,092	1,107	1,121	1,107	77%
Security Level High 8-9	132	135	148	138	10%
Facility Total	1,429	1,430	1,451	1,437	100%

SUBPOPULATION HOUSED THROUGHOUT FACILITY ¹				
Housing Type	April	May	June	Quarterly Average
Administratively Segregated (K-10) ²	16	18	20	18
Restrictive Housing (K-17, K-18, K-19, K-20) ³	32	27	27	29
Americans With Disabilities Act (ADA)	28	31	32	30
K-8 Pregnant, Post-partum, Miscarriage or Terminated Pregnancy	24	21	18	21
Discipline	21	20	15	19
Inmate Workers	115	111	107	111
Medical/Clinic	5	5	7	6
Mentally III – High Observation Housing (HOH)	327	331	359	339
Mentally III – Moderate Observation Housing / Service Area (MOH)	297	313	302	304
Administratively Segregated (K-6B) ⁴	6	5	6	6
Education Based Incarceration (EBI) ⁵	125	135	143	134
Sex Crimes Against Children (K-6Y)	5	5	6	5

¹ Subpopulation housed throughout facility includes those who are classified with special housing needs and are included in the total inmate population. An inmate may belong to more than one subpopulation.

² K-10-Administratively segregated for various reasons including danger to self or others.

³ K-17: Disruptive; K-18: Protective Custody; K-19: Major Disruptive; K-20: Highly Dangerous.

⁴ K-6B: Administratively segregated are at risk of assault in GP housing.

⁵ EBI includes MOH and GP inmates as of April 2023

* Statistical data are averages gathered from Facility Count Sheet every Tuesday.

CUSTODY DIVISION POPULATION QUARTERLY REPORT SECOND QUARTER 2025

PITCHESS DETENTION CENTER – EAST FACILITY (FIRE CAMP) TOTAL INMATE POPULATION 2025					
Security Level	April	May	June	Quarterly Average	% of Population
Security Level Low 1-4	5	6	4	5	50%
Security Level Medium 5-7	6	6	4	5	50%
Facility Total	11	12	8	10	100%

* Statistical data are averages gathered from Facility Count Sheet every Tuesday.

PITCHESS DETENTION CENTER – NORTH TOTAL INMATE POPULATION 2025					
Security Level	April	May	June	Quarterly Average	% of Population
Security Level Low 1-4	57	59	60	59	5%
Security Level Medium 5-7	969	958	1,039	989	77%
Security Level High 8-9	226	243	225	231	18%
Facility Total	1,252	1,260	1,324	1,279	100%
SUBPOPULATION HOUSED THROUGHOUT FACILITY ¹					
HOUSING TYPE	April	May	June	Quarterly Average	
Discipline	20	21	17	19	
Mentally Ill - Moderate Observation Housing (MOH) [†]	1,132	1,234	1,296	1,221	

¹ Subpopulation housed throughout facility includes those who are classified with special housing needs and are included in the total inmate population. An inmate may belong to more than one subpopulation.

[†] On December 2023, K-6Y/ K-6Y EBI inmates moved from PDC North to MCJ; MOH inmates moved from MCJ to PDC North.

* Statistical data are averages gathered from Facility Count Sheet every Tuesday.

PITCHESS DETENTION CENTER - SOUTH TOTAL INMATE POPULATION 2025					
Security Level	April	May	June	Quarterly Average	% of Population
Security Level Low 1-4	24	23	14	20	4%
Security Level Medium 5-7	410	500	550	487	96%
Facility Total	434	523	564	507	100%
SUBPOPULATION HOUSED THROUGHOUT FACILITY ¹					
Housing Type	April	May	June	Quarterly Average	
Programs	123	140	159	141	
Inmate Workers	158	119	100	126	

¹ Subpopulation housed throughout facility includes those who are classified with special housing needs and are included in the total inmate population. An inmate may belong to more than one subpopulation.

* Statistical data are averages gathered from Facility Count Sheet every Tuesday.

NORTH COUNTY CORRECTIONAL FACILITY TOTAL INMATE POPULATION 2025					
Security Level	April	May	June	Quarterly Average	% of Population
Security Level Low 1-4	9	13	10	10	0%
Security Level Medium 5-7	2,490	2,544	2477	2,504	82%
Security Level High 8-9	556	541	549	549	18%
Facility Total	3,055	3,098	3,036	3,063	100%
SUBPOPULATION HOUSED THROUGHOUT FACILITY ¹					
Housing Type	April	May	June	Quarterly Average	
Restrictive Housing (K-10, K-17, K-18, K-19, K-20) ²	2	4	1	2	
Administratively Segregated (K6-B)	177	180	140	166	
Discipline	68	57	70	65	
Inmate Workers	515	527	530	524	
Education Based Incarceration (EBI)	62	72	74	69	
Veterans	35	36	35	35	

¹ Subpopulation housed throughout facility includes those who are classified with special housing needs and are included in the total inmate population. An inmate may belong to more than one subpopulation.

² K-17: Disruptive; K-18: Protective Custody; K-19: Major Disruptive; K-20: Highly Dangerous.

* Statistical data are averages gathered from Facility Count Sheet every Tuesday.

POPULATION OVERVIEW

INMATE POPULATION DEMOGRAPHICS

Racial demographics this quarter indicate the three most populous racial groups within the County jail for both male and female offenders are Hispanic (55%), Black (29%), and White (13%).

Combined	April 2025		May 2025		June 2025		Quarterly Average	Quarterly %
Race	Population	%	Population	%	Population	%		
Hispanic	6,945	54%	7,046	55%	7,114	55%	7,034	55%
Black	3,827	30%	3,844	29%	3,856	29%	3,842	29%
White	1,705	13%	1,723	13%	1,718	13%	1,715	13%
All Others	377	3%	367	3%	349	3%	365	3%
Chinese	44	0%	48	0%	53	0%	48	0%
Filipino	26	0%	28	0%	25	0%	27	0%
Pacific Islanders	10	0%	14	0%	16	0%	13	0%
Japanese	2	0%	2	0%	4	0%	3	0%
American Indian	7	0%	8	0%	11	0%	9	0%
Total	12,943	100%	13,080	100%	13,146	100%	13,056	100%

Male	April 2025		May 2025		June 2025		Quarterly Average	Quarterly %
Race	Population	%	Population	%	Population	%		
Hispanic	6,310	55%	6,415	56%	6,466	56%	6,396	56%
Black	3,355	29%	3,381	29%	3,383	29%	3,373	29%
White	1,445	13%	1,456	12%	1,452	12%	1,451	12%
All Others	328	3%	315	3%	307	3%	317	3%
Chinese	42	0%	45	0%	48	0%	45	0%
Filipino	25	0%	26	0%	23	0%	25	0%
Pacific Islanders	10	0%	11	0%	13	0%	11	0%
Japanese	2	0%	2	0%	4	0%	3	0%
American Indian	6	0%	6	0%	8	0%	7	0%
Total	11,523	100%	11,657	100%	11,704	100%	11,628	100%

Female	April 2025		May 2025		June 2025		Quarterly Average	Quarterly %
Race	Population	%	Population	%	Population	%		
Hispanic	635	46%	631	44%	648	46%	638	46%
Black	472	33%	463	33%	473	33%	469	33%
White	260	18%	267	19%	266	18%	264	18%
All Others	49	3%	52	4%	42	3%	48	3%
Chinese	2	0%	3	0%	5	0%	3	0%
Filipino	1	0%	2	0%	2	0%	2	0%
Pacific Islanders	0	0%	3	0%	3	0%	2	0%
Japanese	0	0%	0	0%	0	0%	0	0%
American Indian	1	0%	2	0%	3	0%	2	0%
Total	1,420	100%	1,423	100%	1,442	100%	1,428	100%

*Statistical data are averages gathered from Custody Division Daily Briefing Report every Tuesday.

CUSTODY DIVISION POPULATION QUARTERLY REPORT SECOND QUARTER 2025

INMATE POPULATION OFFENDER AGE GROUPS

The 26–34-year-old cohort was the most frequently represented age group within the jail population this quarter, followed by the 45 & older.

Combined	April 2025		May 2025		June 2025		Quarterly Average	Quarterly %
Age Group	Population	%	Population	%	Population	%		
18 to 25	1,823	14%	1,814	13%	1,819	14%	1,818	14%
26 to 34	4,411	34%	4,464	34%	4,490	34%	4,455	34%
35 to 39	2,326	18%	2,337	18%	2,354	18%	2,339	18%
40 to 44	1,637	13%	1,651	13%	1,661	13%	1,650	13%
45 & Older	2,746	21%	2,814	22%	2,822	21%	2,794	21%
Total	12,943	100%	13,080	100%	13,146	100%	13,056	100%

Male	April 2025		May 2025		June 2025		Quarterly Average	Quarterly %
Age Group	Population	%	Population	%	Population	%		
18 to 25	1,633	14%	1,626	14%	1,634	14%	1,631	14%
26 to 34	3,899	34%	3,947	34%	3,960	34%	3,935	34%
35 to 39	2,044	18%	2,052	18%	2,072	18%	2,056	18%
40 to 44	1,434	12%	1,456	12%	1,453	12%	1,448	12%
45 & Older	2,513	22%	2,576	22%	2,585	22%	2,558	22%
Total	11,523	100%	11,657	100%	11,704	100%	11,628	100%

Female	April 2025		May 2025		June 2025		Quarterly Average	Quarterly %
Age Group	Population	%	Population	%	Population	%		
18 to 25	190	14%	188	13%	185	13%	187	13%
26 to 34	512	36%	517	36%	530	37%	520	36%
35 to 39	282	20%	285	20%	282	20%	283	20%
40 to 44	203	14%	195	14%	208	14%	202	14%
45 & Older	233	16%	238	17%	237	16%	236	17%
Total	1,420	100%	1,423	100%	1,442	100%	1,428	100%

*Statistical data are averages gathered from Custody Division Daily Briefing Report every Tuesday.

JAIL POPULATION BY SECURITY LEVEL

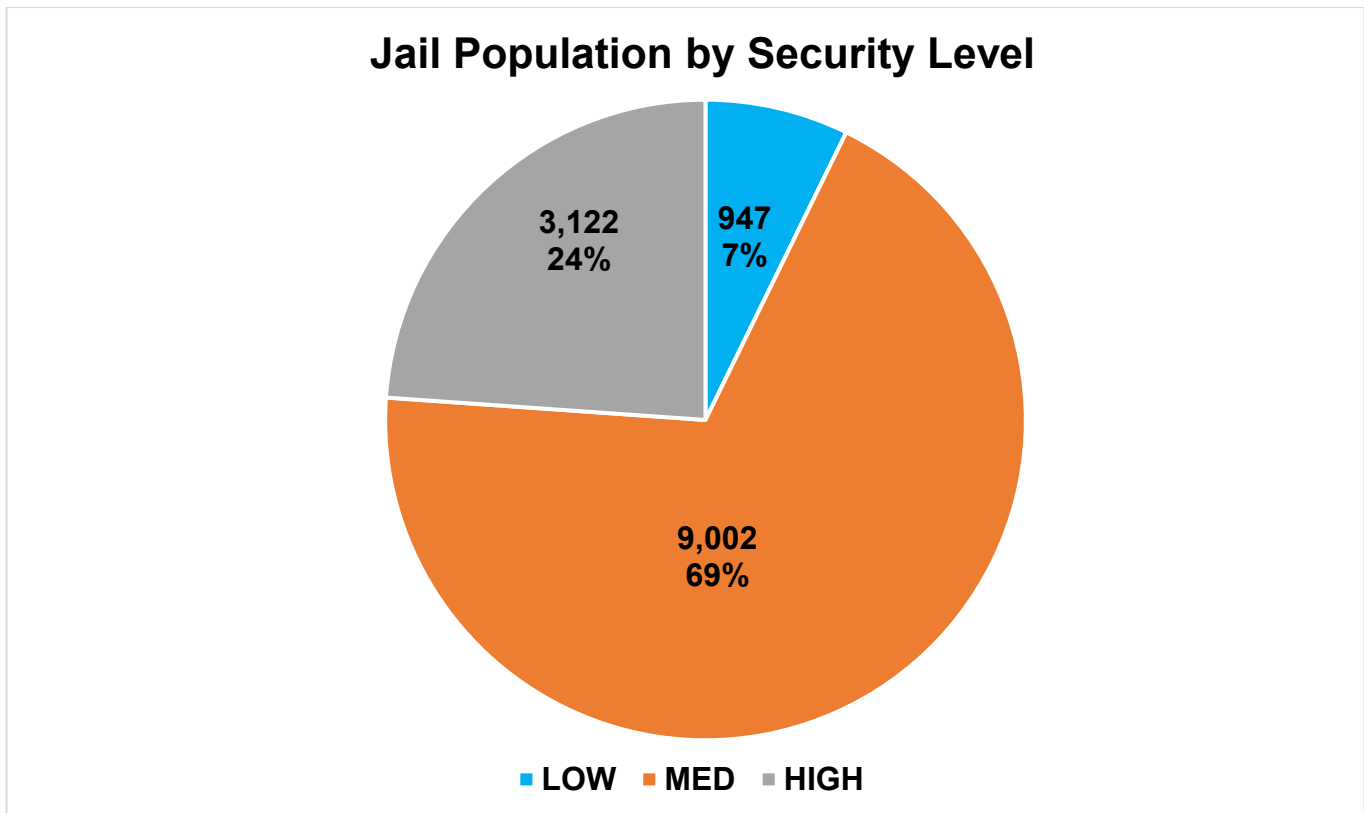
The Department utilizes the Northpointe Classification system to assign security levels to inmates. The security levels guide where an inmate will be housed based on their individual risk for in-custody misconduct. Lower security housing areas offer more programming and privileges to better prepare the inmates for release. Higher security housing is more restricted and therefore limited in what programs are offered, due to potential risk of serious misconduct and/or escape. All inmates are re-evaluated for reclassification of security level every 45 days.

Jail Population by Security Level				
Month	Low	Medium	High	Total
April	957	8,948	3,056	12,961
May	957	9,008	3,124	13,089
June	928	9,049	3,187	13,164
Average	947	9,002	3,122	13,071
Percent	7%	69%	24%	100%

**This chart only includes inmates housed in LASD Type II facilities, does not include inmates housed in alternative custody beds.*

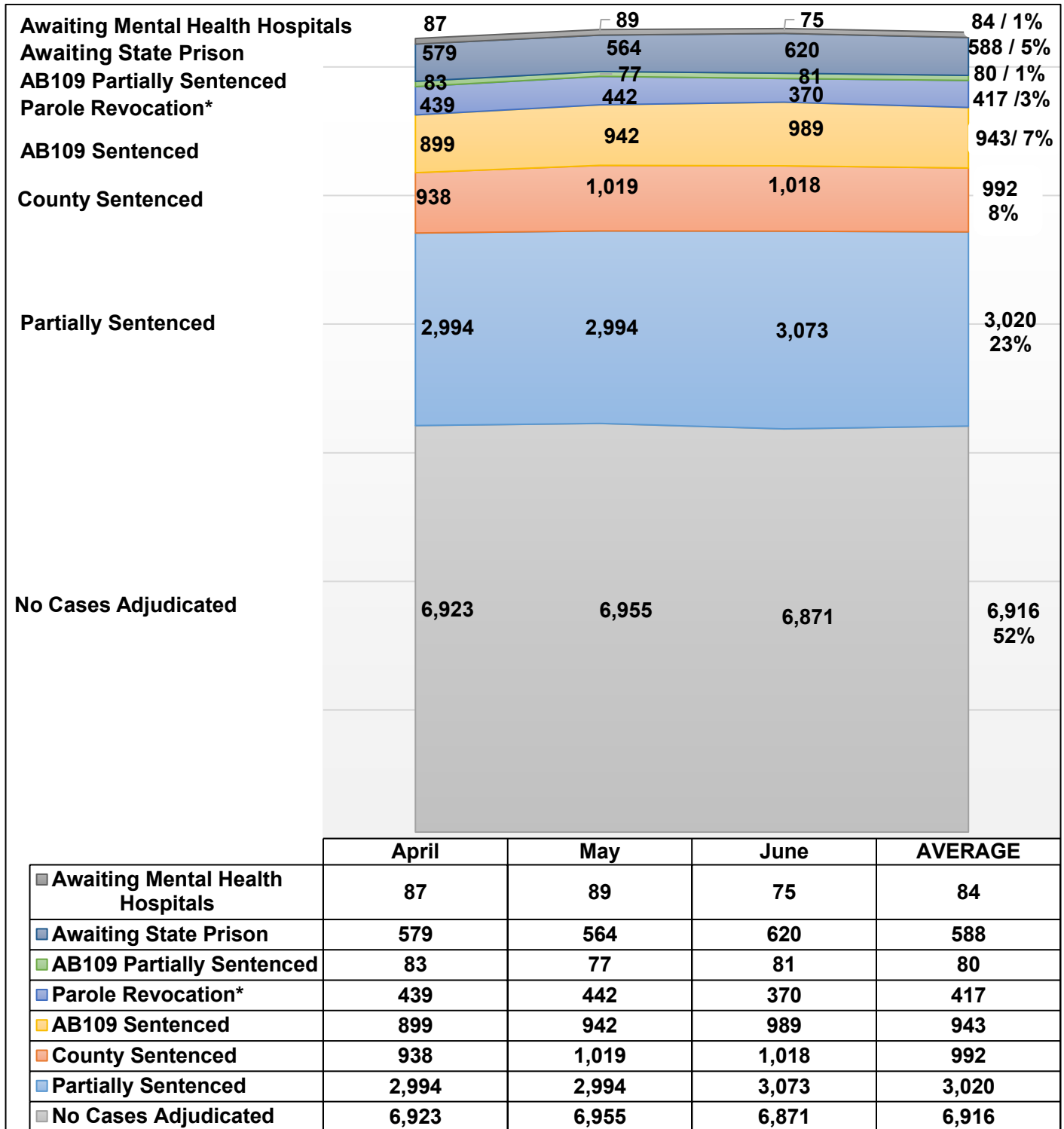
***Information contained is based on a snapshot of the daily inmate population purged every Tuesday.*

The pie graph below depicts the average number of inmates housed this quarter by security level. The percentage is calculated to the Facility ADIP for this quarter (13,071).



INMATE POPULATION BREAKDOWN

The inmate population consists of various categories of inmates in broad groupings, including: no cases adjudicated, traditional county sentenced, AB109 sentenced, AB109 sentenced with additional charges, parole/revocation violators, and those awaiting transfer to state prison.



*Parole Revocation includes PRCS Revocation 3455, Flash Incarceration 3454 and Inmates with a 3056 hold.

**This report is a general overview of the inmate population. As it does not include all subgroups of the inmate population, it is not intended to be relied upon as a definitive representation of the entire inmate population.

INMATE POPULATION BREAKDOWN CONTINUED

- **AWAITING STATE PRISON**

During this quarter, an average of 588 inmates were awaiting transfer to state prison, some while pending trial on other cases.

- **AB109 PAROLE AND PROBATION VIOLATORS**

An average of 417 AB109 inmates were in custody for violating their parole or probation.

- **AB109 SENTENCED**

An average of 943 inmates were in custody, sentenced under AB109.

- **TRADITIONAL COUNTY SENTENCED INMATE POPULATION**

The average daily count for the TCS population was 992, approximately seven percent (8%) of the inmate population.

- **NO CASES ADJUDICATED**

During this quarter, there were approximately 15,211 new bookings into County jail. Fifty-two percent (52%) of the average daily inmate population (13,036) was comprised of inmates who did not have their cases adjudicated. These include inmates who have an open case and have not been sentenced by the courts, along with court returnees and inmates enroute to other agencies with no Los Angeles County matters. Court returnees are inmates returning from state prisons or state hospitals to either face new charges, re-litigate past crimes, follow up on competency reports or for civil matters (witness, child custody, etc.).

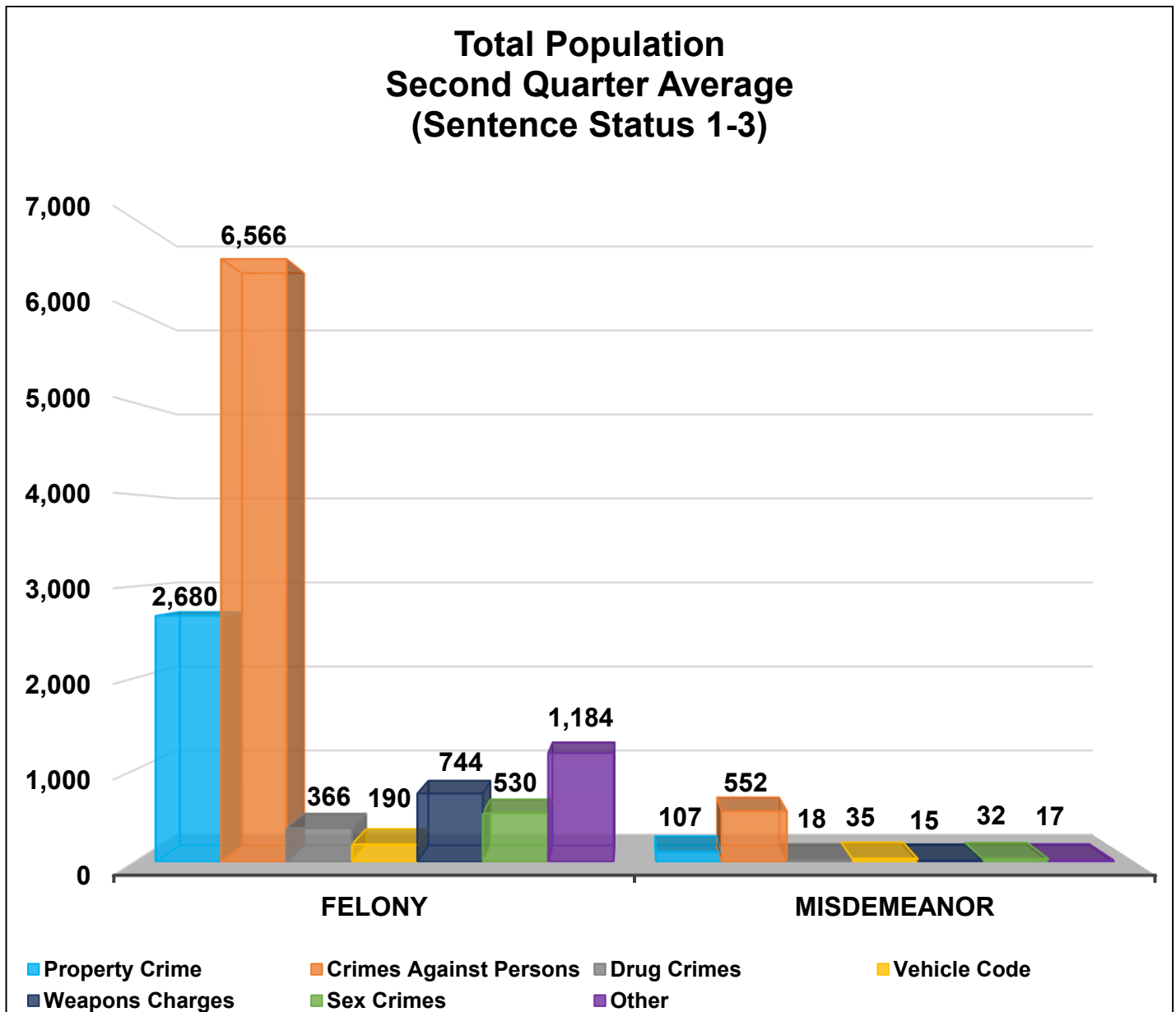
CRIME CLASSIFICATION STATISTICS

The chart below provides an average breakdown for the entire inmate population, both sentenced and un-sentenced, by arrest category.

Total Population (Sentence Status 1-3)

Arrest Category	Property Crimes	Crimes Against Persons	Drug Crimes	Vehicle Codes	Weapons Charges	Sex Crimes	Other	Total	% of the Population
Felony	2,680	6,566	366	190	744	530	1,184	12,260	94%
Misdemeanor	107	552	18	35	15	32	17	776	6%
Total	2,787	7,118	384	225	759	562	1,201	13,036	100%

**Information contained is based on a snapshot of the daily inmate population every Tuesday.*



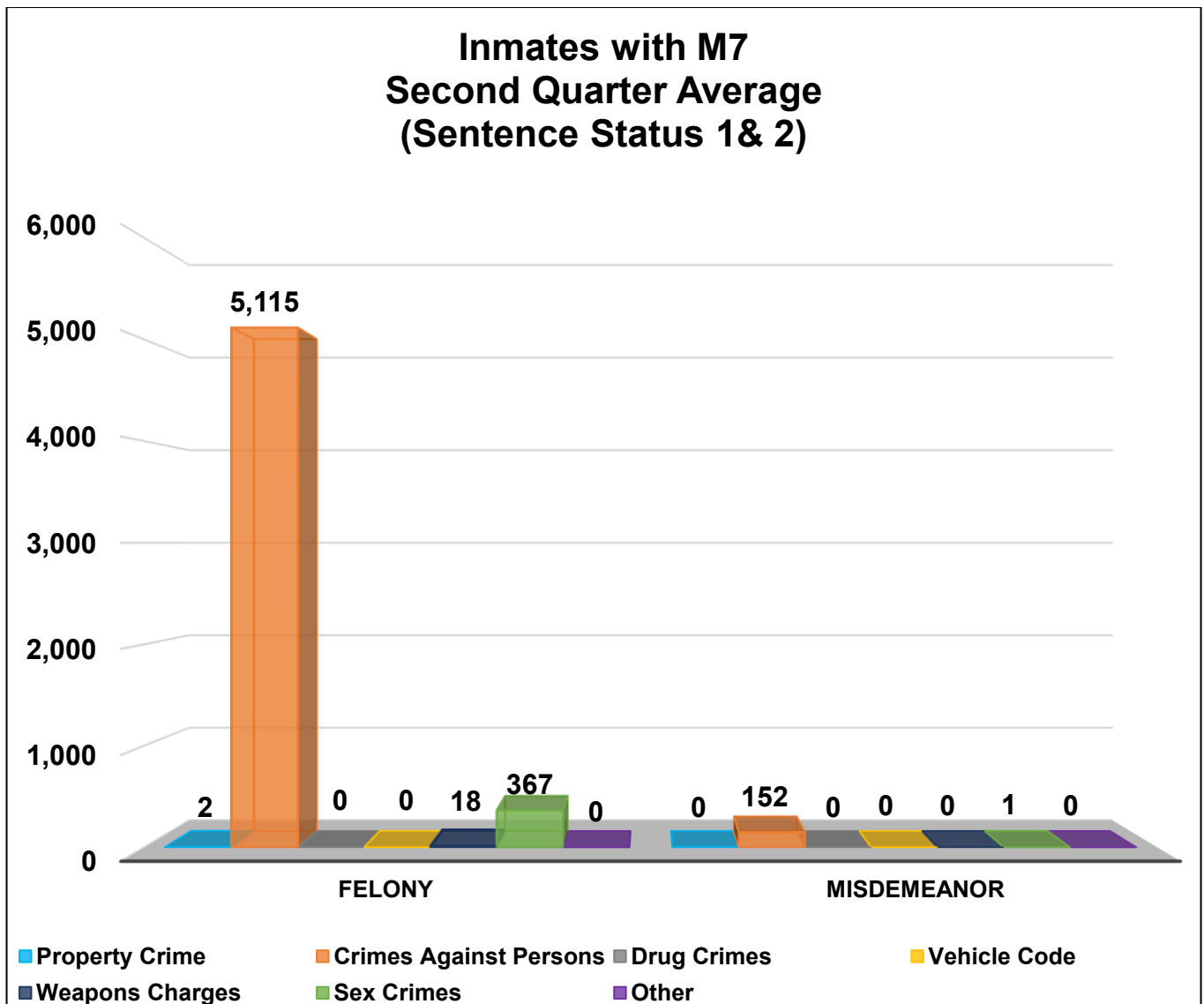
INMATES WITH ASSAULTIVE/VIOLENT CHARGES (M7)

The chart below provides a breakdown for the inmate population with M7 charges, sentence status one and two, and by arrest category.

Inmates with Assaultive/Violent Charges (M7) (Sentence Status 1 and 2)

Arrest Category	Property Crimes	Crimes Against Persons	Drug Crimes	Vehicle Codes	Weapons Charges	Sex Crimes	Other	Total	% of the Sentence Status 1 and 2 Population
Felony	2	5,115	0	0	18	367	0	5,502	97%
Misdemeanor	0	152	0	0	0	1	0	153	3%
Total	2	5,267	0	0	18	368	0	5,655	100%

**Information contained is based on a snapshot of the daily inmate population every Tuesday.*

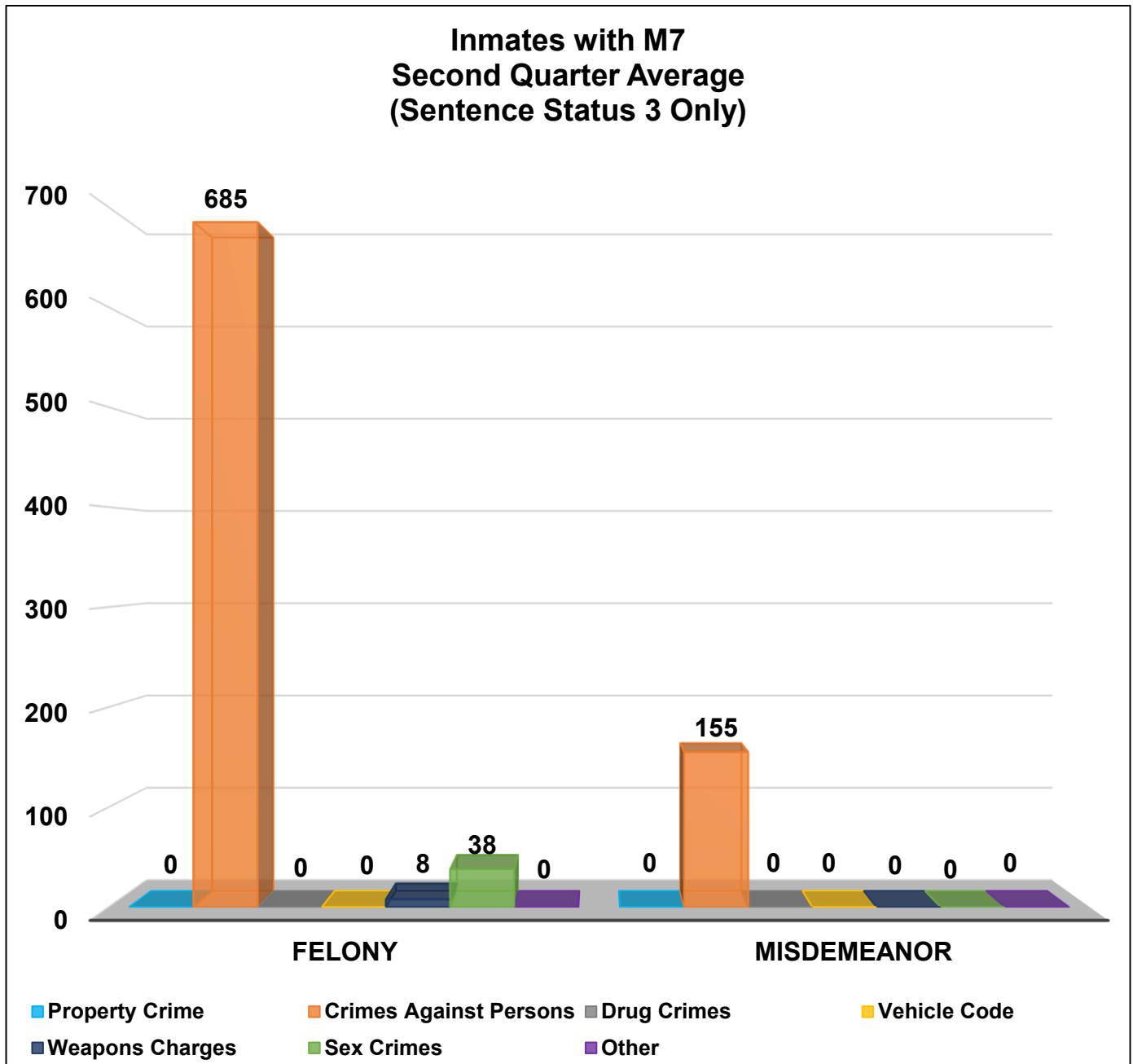


INMATES WITH ASSAULTIVE/VIOLENT CHARGES (M7) CONTINUED

Inmates with Assaultive/Violent Charges (M7) (Sentence Status 3 Only)

Arrest Category	Property Crime	Crimes Against Persons	Drug Crimes	Vehicle Code	Weapons Charges	Sex Crimes	Other	Total	% of the Sentenced Population
Felony	0	685	0	0	8	38	0	731	83%
Misdemeanor	0	155	0	0	0	0	0	155	17%
Total	0	840	0	0	8	38	0	886	100%

**Information contained is based on a snapshot of the daily inmate population every Tuesday.*



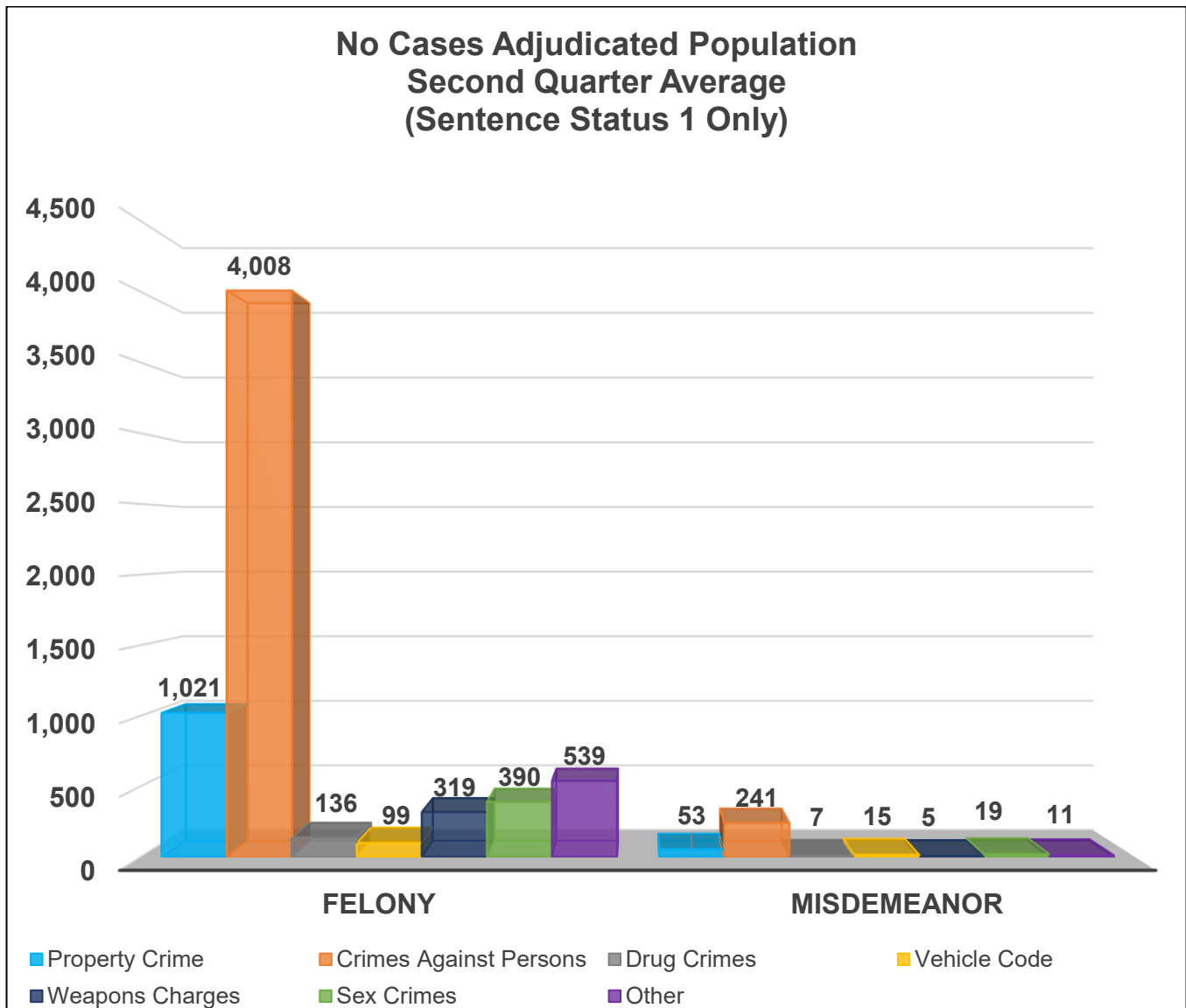
NO CASES ADJUDICATED

The chart below provides a breakdown for the inmate population with an open case and have not been sentenced by the courts, along with court returnees.

No Cases Adjudicated (Sentence Status 1 only)

Arrest Category	Property Crime	Crimes Against Persons	Drug Crimes	Vehicle Code	Weapons Charges	Sex Crimes	Other	Total	% of the Sentence Status 1 Population
Felony	1,021	4,008	136	99	319	390	539	6,512	95%
Misdemeanor	53	241	7	15	5	19	11	351	5%
Total	1,074	4,249	143	114	324	409	550	6,863	100%

**Information contained is based on a snapshot of the daily inmate population every Tuesday.*



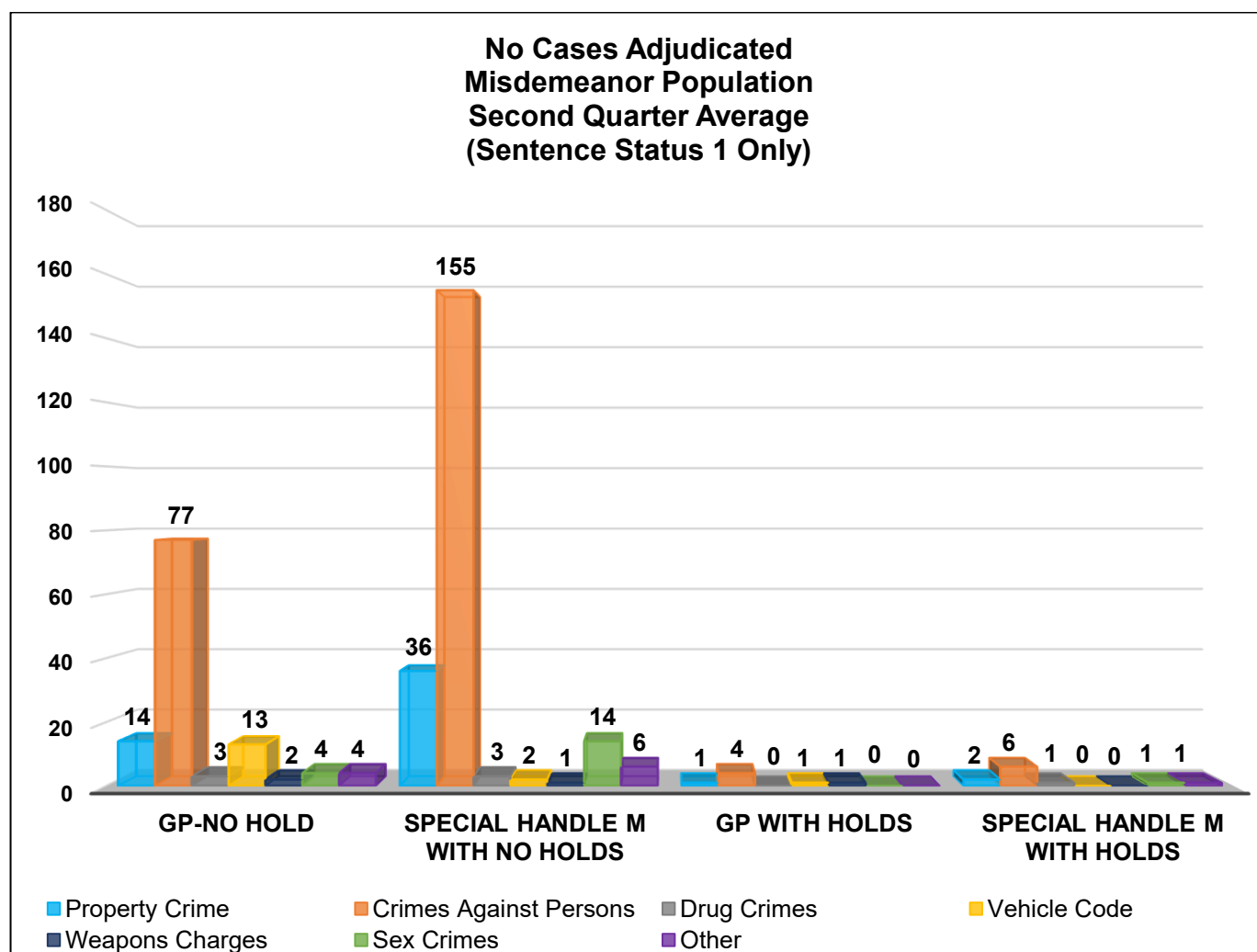
NO CASES ADJUDICATED MISDEMEANOR POPULATION

The chart below provides a breakdown for the inmate population with open cases and have not been sentenced by the courts, along with court returnees, who are incarcerated for a misdemeanor and have not yet been convicted. "Holds" indicates the inmates are being held on a matter pending from an outside agency.

No Cases Adjudicated Misdemeanor Population (Sentence Status 1 only)

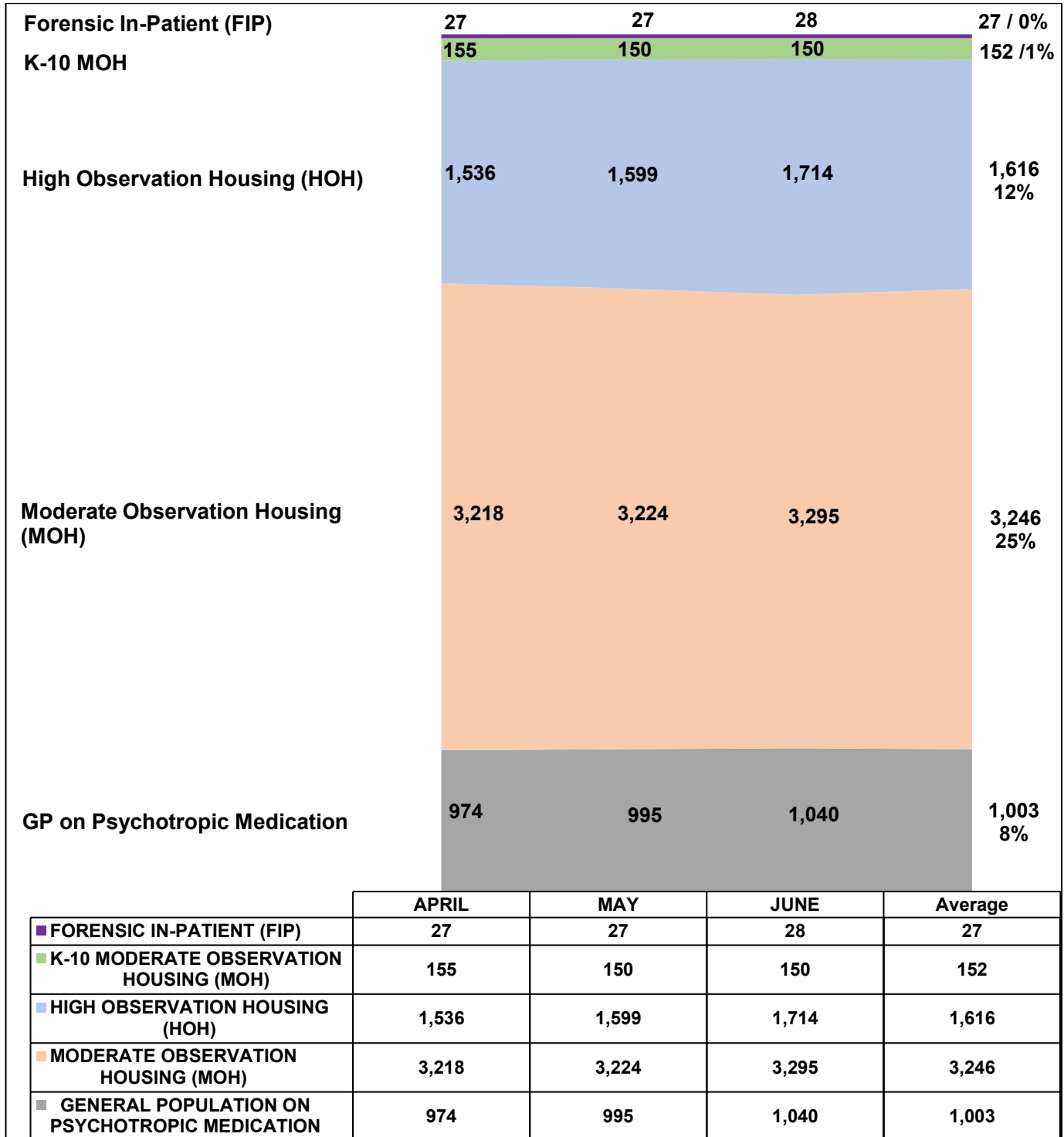
Arrest Category	Property Crimes	Crimes Against Persons	Drug Crimes	Vehicle Codes	Weapons Charges	Sex Crimes	Other	Total	% of the Sentence Status 1 Population
GP No Hold	14	77	3	13	2	4	4	117	33%
Special Handle M with No Holds	36	155	3	2	1	14	6	217	62%
GP with Holds	1	4	0	1	1	0	0	7	2%
Special Handle M with Holds	2	6	1	0	0	1	1	11	3%
Total	53	242	7	16	4	19	11	352	100%

**Information contained is based on a snapshot of the daily inmate population every Tuesday.*



MENTAL HEALTH INMATE POPULATION

This quarter, the overall inmate population was 13,036, of which the mental health population averaged 6,044 and accounted for 46 percent. Inmates identified with mental health needs requiring specialized moderate or high observation housing account for 38 percent of the overall population. The remaining 8 percent have been treated and continue to receive psychotropic medication while housed in general population.



*Information contained is based on a snapshot of the daily inmate population every Tuesday.

MISDEMEANOR INCOMPETENT TO STAND TRIAL (MIST)

County jail houses inmates who are awaiting trial for misdemeanor charges who have been found to be incompetent to stand trial. This quarter, the average number of inmates on MIST is 162.

Misdemeanor Incompetent to Stand Trial (MIST)									
April			May			June			Quarterly Average
Male	Female	Total	Male	Female	Total	Male	Female	Total	
109	41	150	120	43	163	137	35	172	162

Information contained is based on a snapshot of the daily inmate population every Tuesday.

AMERICANS WITH DISABILITIES ACT (ADA)

Americans with Disabilities Act housing is used to accommodate inmates with mobility limitations and/or physical disabilities. This quarter, the average number of inmates requiring ADA is 550, which is higher than last quarter's 517 total.

Americans With Disabilities Act (ADA)				
Disability	April	May	June	Quarterly Average
Seeing Impaired	10	9	10	10
Hearing Impaired	5	5	6	5
Wheelchair	205	188	192	195
Mobility Impaired	325	343	353	340
Monthly Total	545	545	561	550

Information contained is based on a snapshot of the daily inmate population every Tuesday.

**Inmates with multiple mobility limitations and/or physical disabilities are double counted in each group.*

MEDICAL HOUSING

Medical Outpatient/Specialty Housing (MOSH) is provided to inmates who require a level of medical treatment beyond that of stabilized medication distribution (pill call). The MOSH area in Men's Central Jail (MCJ) is also used to house inmates with mobility issues.

Additional Medical Housing				
Housing Area	April	May	June	Quarterly Average
Correctional Treatment Center (CTC)	112	106	106	108
Los Angeles County Medical Center (LCMC)	24	25	26	25
MCJ Medical/Clinic*	329	320	321	323
Monthly Total	465	451	453	456

Data are averages gathered from Facility Count Sheet every Tuesday.

**Includes some ADA housing.*

IN-CUSTODY PROGRAMS

LA COUNTY INMATE IN-CUSTODY PROGRAMS

The Los Angeles County jail offers several in-custody programs. They vary from in-custody work assignments, vocational job training, education, and life skill classes, as well as fire camp training and CDCR fire camp placement for AB109 inmates. Various programs awarded sentenced inmates additional time credits for their participation pursuant to the California Penal Code:

CREDIT EARNINGS

Program	Penal Code	Credit Earned	Type of Inmate
Sentenced GT/WT	4019 PC	Day-for-Day (1:1)	All Sentenced Inmates
Conservation	4019.1 PC	One and one half-for One (1.5:1)	All Sentenced Inmates
Fire Camp	4019.2 PC	Two-for-One (2:1)	AB109 Sentenced Inmates
Milestone*	4019.4 PC	Up to 6 weeks per year	All Sentenced Inmates

**Milestone credits are retroactively applied for unsentenced inmates.*

CONSERVATION WORK PROGRAM

The Conservation Work Program (CWP) requires inmates to complete their adjusted sentence while working in various job classifications, giving them the skills and work discipline necessary to increase their chances of success once released. Effective January 2015, all sentenced offenders, including TCS inmates are eligible to receive credits pursuant to Penal Code Section 4019.1. For this quarter, approximately 1,363 offenders (10% of the population) participated in CWP.

CONSERVATION WORK PROGRAM (CWP)				
Inmate Type	April	May	June	Quarterly Average
Participating Inmates	1,368	1,343	1,379	1,363

**Information contained is based on a snapshot of the daily inmate population every Tuesday.*

EDUCATION BASED INCARCERATION PROGRAMS

The Education Based Incarceration (EBI) Program uses traditional and non-traditional education which is designed to reduce incarceration by increasing the educational, civic, social, economic, and life skills of its participants. Offenders who are sentenced are eligible to receive credit pursuant to Penal Code 4019.4. For this quarter, 69 milestone credits were awarded.

The EBI school program continues to be limited due to COVID-19.

FIRE CAMP TRAINING PROGRAM

Fire Camp Training and California Institute for Women (CIW) training are aligned under the CWP. This program is the first step of training before an inmate may participate in a state-facilitated Fire Camp program overseen by the CDCR. Offenders who are sentenced under AB109 are eligible to receive credits pursuant to Penal Code 4019.1. The average number of inmates enrolled in the Fire Camp training program for this quarter was 10.

FIRE CAMP TRAINING CAMP				
Housing Type	April	May	June	Quarterly Average
PDC Fire Camp Training (Men)	11	9	6	9
CIW Fire Camp Training (Women)	0	2	1	1
Monthly Total	11	11	7	10

CALIFORNIA DEPARTMENT OF CORRECTIONS AND REHABILITATION **FIRE CAMP PROGRAM**

Once an inmate passes all necessary requirements in the Fire Camp training program located at Pitchess Detention Center (PDC) East facility, they are transferred to one of five state-contracted fire camp sites where they will serve the remainder of their adjusted sentence. Offenders who are sentenced under AB109 are eligible to receive credits pursuant to Penal Code 4019.2. The average number of inmates assigned to CDCR Fire Camp for this quarter was 1.

CDCR FIRE CAMP				
Fire Camp Locations	April	May	June	Quarterly Average
Acton Fire Camp	0	0	0	0
Francisquito Fire Camp	0	0	0	0
Holton Fire Camp	1	1	1	1
Julius Klein Fire Camp	0	0	0	0
Malibu Women's Fire Camp	0	0	0	0
Monthly Total	1	1	1	1

IN-CUSTODY SUBSTANCE TREATMENT AND REENTRY TRANSITION

The jail-based Substance Treatment and Reentry Transition (START) treatment services provides substance use disorder (SUD) treatment services at the different jail facilities. Treatment services include screening, clinical assessment, group and individual counseling, case management services, medication-assisted treatment, re-entry planning and care coordination.

In-Custody START (CRDF)	April	May	June	Quarterly Average
Enrolled	163	173	165	167
Completed	17	29	21	22
In-Custody START (MCJ)	April	May	June	Quarterly Average
Enrolled	132	136	106	125
Completed	7	10	13	10
In-Custody START (PDC)	April	May	June	Quarterly Average
Enrolled	210	231	218	220
Completed	32	45	42	40
In-Custody START (TTCF)	April	May	June	Quarterly Average
Enrolled	68	76	68	71
Completed	15	20	10	15

ALTERNATIVES TO CUSTODY PROGRAMS

ALTERNATIVES TO CUSTODY PROGRAMS

The Community Transition Unit (CTU), the Community Based Alternatives to Custody (CBAC) unit, and the Compliance Team work together by utilizing a variety of alternatives to custody programming options in an effort to enhance an inmate's chances of success upon release. These programs are conducted in collaboration with local agencies including community and faith-based organizations, Department of Mental Health (DMH), Department of Public Health (DPH) and other organizations. It is the Department's goal to program inmates from intake through re-entry into the community. With this approach, the Department hopes to increase public safety and reduce the rate of recidivism.

Supported by release planning overseen by the CTU, and in partnership with contracted services, inmates are provided re-entry assistance through linkages to services that are initiated while they are in-custody and continued upon release. Through the Alternatives to Custody (ATC) programs, qualifying inmates are afforded the opportunity to complete the remaining portion of their sentence in a community treatment program. Inmates who do not qualify for ATC due to security or other reasons are referred to community providers for re-entry assistance.

The ATC programs include:

SUBSTANCE TREATMENT AND REENTRY TRANSITION PROGRAM

The Substance Treatment and Reentry Transition (START) program is a DPH, and Substance Abuse Prevention Control (SAPC) funded program that places eligible male and female inmates into residential Substance Use Disorder (SUD) treatment programs on electronic Global Positioning System monitoring as an ATC program.

Program Quarterly Statistics	Enrolled	Completed	Returned to Custody	Absconded
START	13	6	0	1

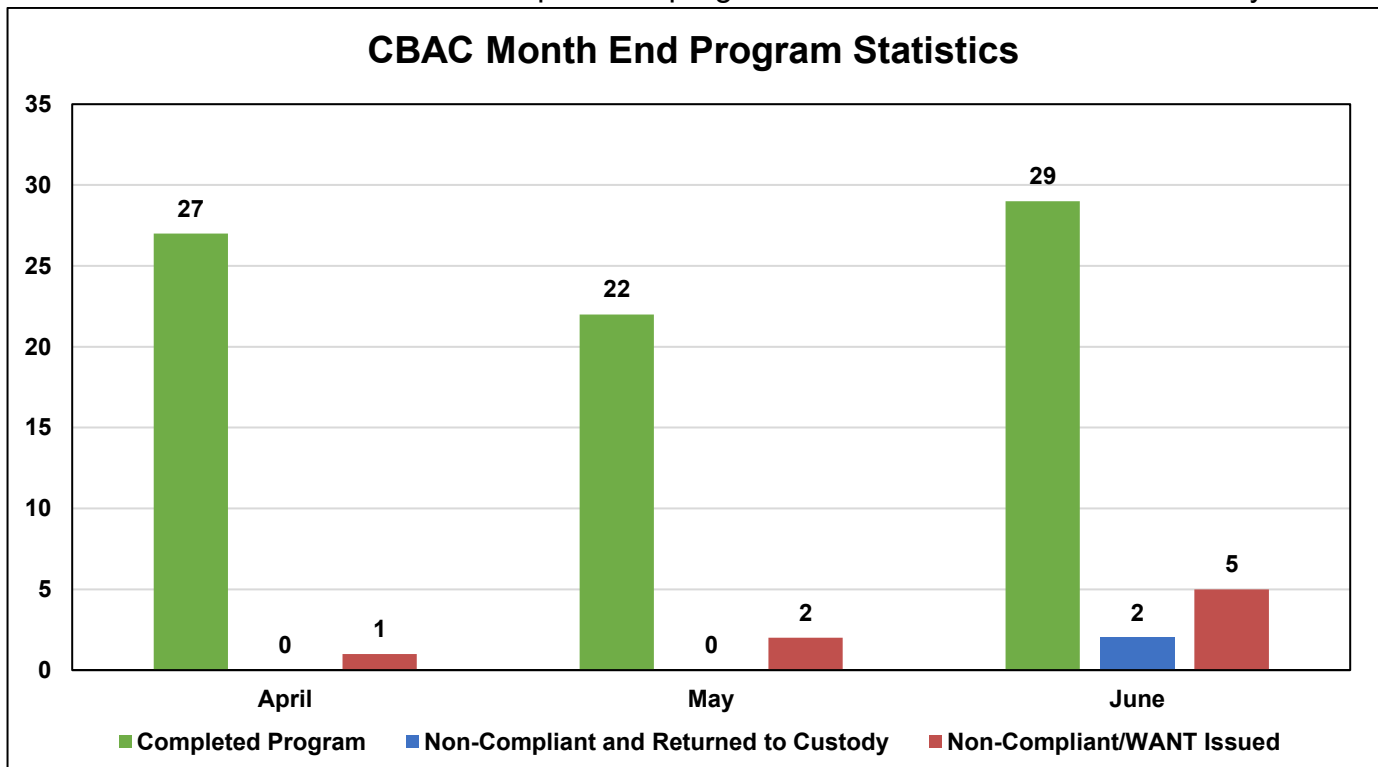
**Referrals and placements to the START community program are on hold pending execution of a new memorandum of agreement.*

COMMUNITY BASED ALTERNATIVES TO CUSTODY

The Population Management Bureau's (PMB) Community Based Alternatives to Custody (CBAC) unit identifies qualified, low risk, sentenced offenders within the jail population to finish their remaining sentence in an out-of-custody alternative environment. Although these individuals are outside of traditional custody, they are still under the jurisdiction of the Department.

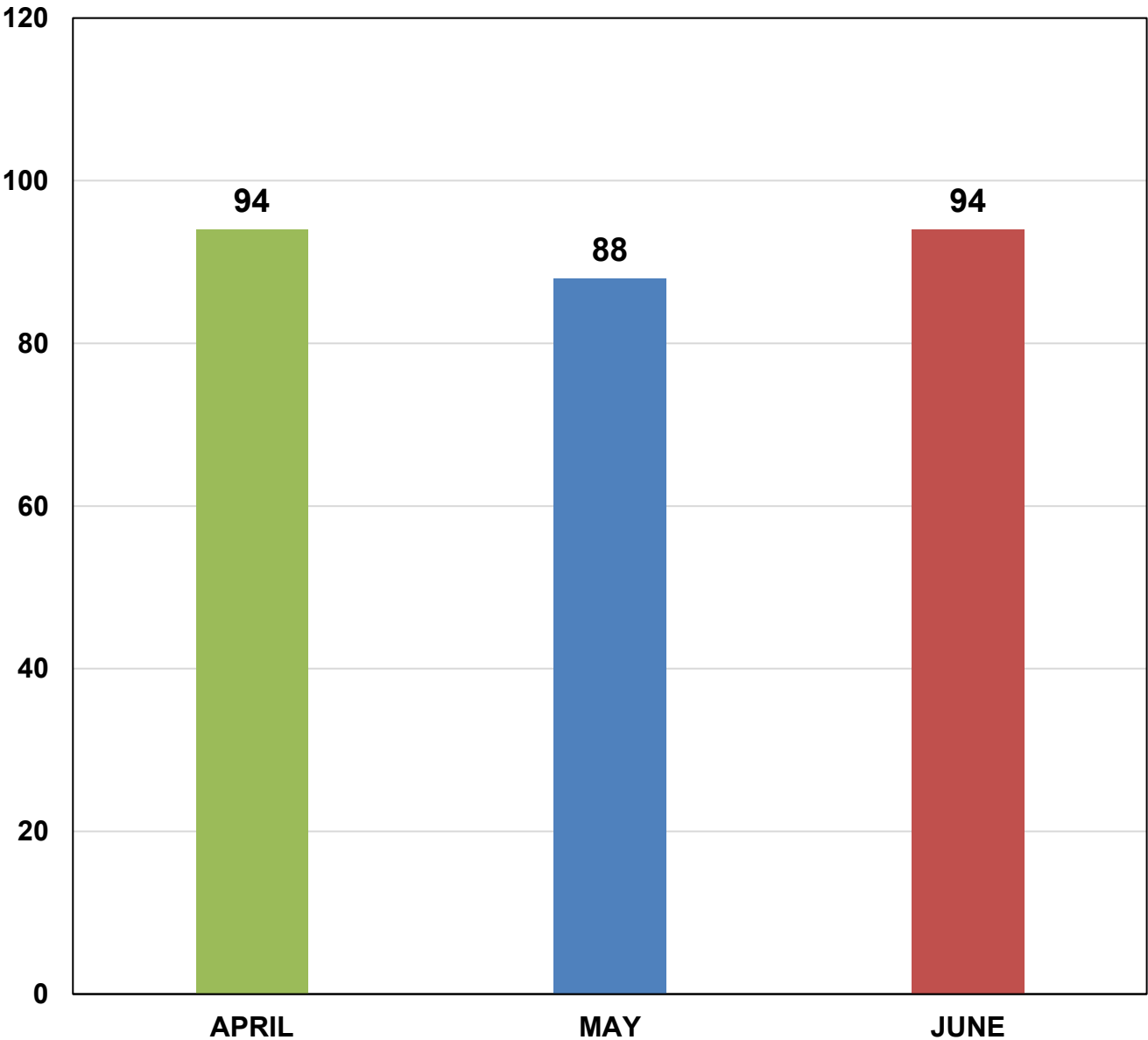
CBAC Monthly Placement									
Program	April			May			June		
	Male	Female	Total	Male	Female	Total	Male	Female	Total
Electronic Monitoring Program	4	2	6	12	3	15	2	2	4
Weekender Work Program	6	2	8	7	0	7	10	1	11
Work Release Program	8	4	12	7	4	11	14	1	15
Monthly Total	18	8	26	26	7	33	26	4	30

The graph below depicts the total number of offenders who successfully completed the remainder of their sentence on a CBAC program. It shows the number of offenders who failed to complete the program, and with the efforts of the PMB Compliance Unit, returned to finish their sentence. It also shows those who failed to complete the program and were not returned to custody.



LA COUNTY ALTERNATIVES TO CUSTODY INMATE POPULATION

**Second Quarter 2025
Los Angeles County Alternative to Custody Inmate Count**



2025 Quarterly ATC Average Daily Inmate Population (ADIP)*
92

**Includes Community Based Alternatives to Custody (CBAC), Fire Camp and inmate station workers.*

RE-ENTRY ASSISTANCE

COMMUNITY RE-ENTRY AND RESOURCE CENTER

The information below represents recently released inmates and inquiries and/or contacts made by the general public who have been assisted with services at the Community Re-entry and Resource Center (CRRC) for the second quarter of 2025.

Inquiry Demographic Population	April	May	June	Total	Average
General Release	611	640	588	1,839	613
General Public	55	41	14	110	37
Alternatives to Custody Program	2	12	3	17	6
Work Release Program	1	0	0	1	0
Coordinated Release	138	77	56	271	90
Monthly Total	807	770	661	2,238	746

Inquiry Demographic Gender	April	May	June	Total	Average
Male	547	559	516	1,622	541
Female	377	231	179	787	262
Monthly Total	924	790	695	2,409	803

Community Transition Unit (CTU) personnel visit the Inmate Reception Center release area to educate and remind inmates waiting to go home about services available at the CRRC. Walks of the release area are performed every 90 minutes.

	April	May	June	Total	Average
Number of 90 Minute Contact Walks	110	105	95	310	103
Number of Inmates Contacted	999	966	771	2,736	912
Number of Flyers Distributed	999	966	771	2,736	912

CTU COORDINATED RELEASES TO VARIOUS PROGRAMS

The final 90 days leading to an inmate's release from custody are the most critical in ensuring a successful transition from custody to Community Based Organization (CBO) treatment centers. During the time leading up to their release, inmates are interviewed several times by the CBO staff and members of the CTU to ensure that they are matched up with a suitable treatment provider.

The coordinated release process helps to create trust between law enforcement, inmate participants and the CBOs. The CTU's goal is to provide a successful recovery and re-entry into the community and to ultimately decrease recidivism.

	April	May	June	Total	Average
Coordinated Release	36	28	26	90	30

CTU VITAL RECORDS

Through the Vital Records Program, Department staff members have been deputized by the County Registrar-Recorder to facilitate birth certificate applications for inmates born in Los Angeles County who have requested a certified copy. The fee of \$32 for certified copies of birth certificates is funded by the Inmate Welfare Fund.

All inmates in custody may apply for a replacement California Identification Card. The issued IDs are provided to the inmates upon their release. The inmates must still report to the California Department of Motor Vehicles (DMV) to obtain a driver's license following their release.

Records Processed	April	May	June	Quarterly Total	Quarterly Average
DMV - California Identification Card	90	27	24	141	47
Records – Birth Certificate	109	59	79	247	82
Total	199	86	103	388	129

Records Issued	April	May	June	Quarterly Total	Quarterly Average
DMV - California Identification Card	0	40	9	49	16
Records – Birth Certificate	54	225	0	279	93
Total	54	265	9	328	109