



# LOS ANGELES COUNTY SHERIFF'S DEPARTMENT

## SCHOOL RESOURCE DEPUTY PROGRAM



## COMMUNITY PARTNERSHIPS BUREAU

# CONTENTS

## I. INTRODUCTION

Los Angeles Sheriff's Department School Resource Deputy (SRD) Program	2
---	---

## II. SRD OPERATIONS

Organizational Chart	3
School Resource Deputies and Assigned Contracted Schools	4 - 12
School Resource Deputy Program Services and Meetings	13 - 16

## III. SRD STATISTICS

School Resource Deputy Program 4 <sup>th</sup> Quarter Statistics	17
---	----

## IV. SRD PROGRAM AND SUCCESS STORIES

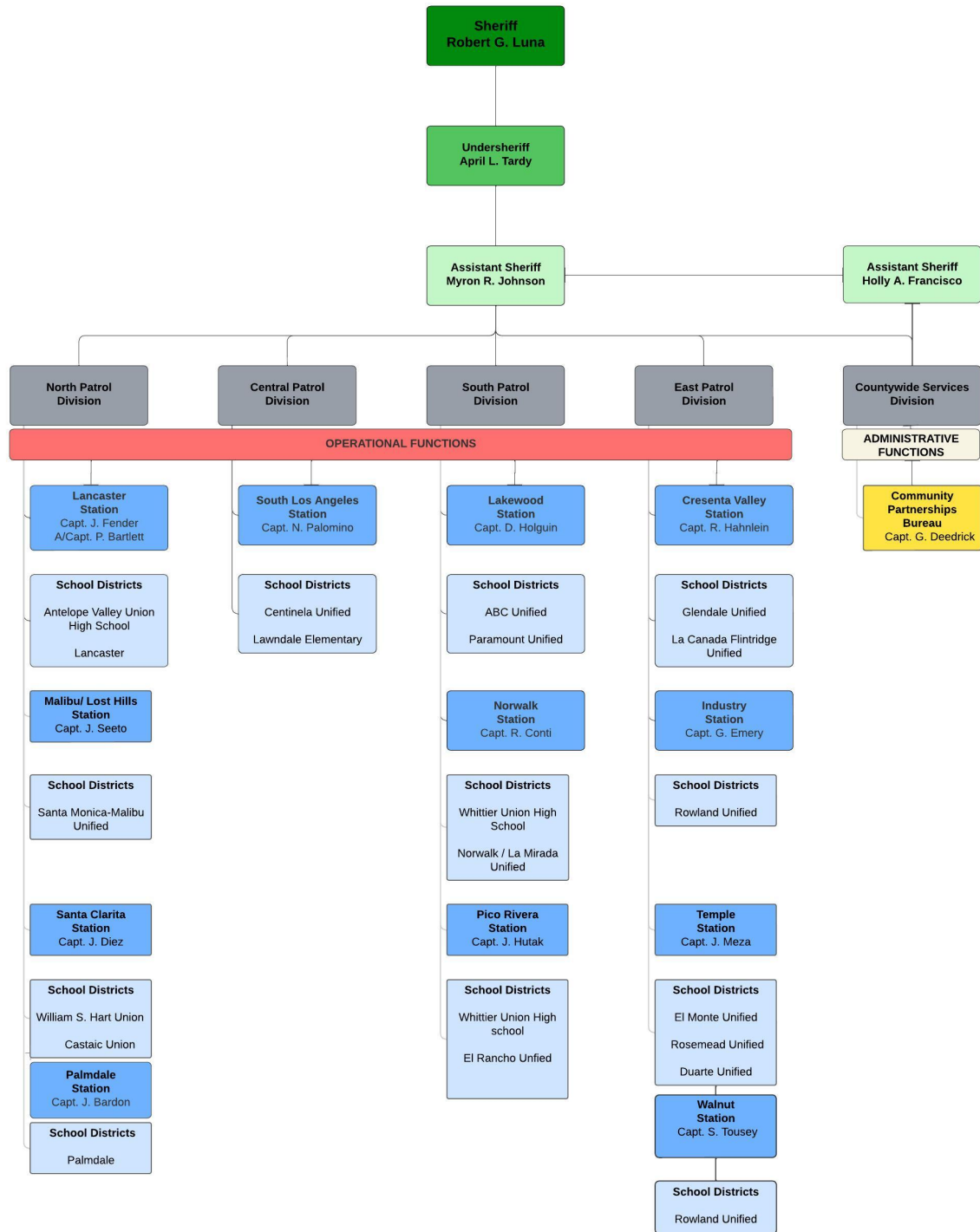
School Resource Deputy Collaboration with Parents and Students	18
School Resource Deputy Trainings	19
School Resource Deputy Program Success Stories	20

## **School Resource Deputy Program**

The primary mission of the School Resource Deputy (SRD) Program is to maintain and uphold a safe and secure learning environment while fostering positive relationships within the school community. The School Resource Deputies are not school disciplinarians. School Resource Deputies must recognize they will not become involved in discipline as it is a school matter and will be handled by school administrators. To achieve the mission effectively, the School Resource Deputy program should embrace multiple roles: mentor/educator, counselor, and peace officer.

1. School Resource Deputies serve as mentors and educators by actively engaging with students in various capacities. School Resource Deputies can lead the school administration by providing educational sessions on topics such as safety, bullying prevention, drug education awareness, and other current issues.
2. School Resource Deputies play a crucial role in supporting the well-being of students. They can serve as a resource for students experiencing difficulties, referral to appropriate support services, and intervention when necessary. School Resource Deputies can also collaborate with school officials to effectively develop and implement strategies for addressing student needs.
3. School Resource Deputies are responsible for maintaining safety and security within the school environment. School Resource Deputies play a crucial role in emergency preparedness and response, ensuring that students and staff are prepared for various crisis situations.

By supporting these roles, School Resource Deputies can achieve the overall goal of maintaining a safe and secure learning environment while also fostering positive relationships within the school community. Building trust and rapport with students, staff, and parents is essential for effective communication and collaboration, which are key components of successful school safety initiatives.



## School Resource Deputies and Assigned Contracted Schools

### North Patrol Division

#### LANCASTER STATION

School Information	School Patrolled	Deputy Assigned
Antelope Valley Union High School District	Antelope Valley High School	1 DEPUTY
Antelope Valley Union High School District	Eastside High School	1 DEPUTY
Antelope Valley Union High School District	Highland High School	1 DEPUTY
Antelope Valley Union High School District	Lancaster High School, Quartz Hill High School	1 DEPUTY
Antelope Valley Union High School District	Littlerock High School	1 DEPUTY
Antelope Valley Union High School District	Desert Winds High School, R. Rex Parris High School, Pheonix Community Day School, Adult Education, SOAR Prep, Knight Prep, Palmdale Prep, Antelope Valley Continuation School	1 DEPUTY
Antelope Valley Union High School District	Palmdale High School	1 DEPUTY
Antelope Valley Union High School District	Pete Knight High School	1 DEPUTY
Antelope Valley Union High School District	Antelope Valley College	2 DEPUTY
Lancaster School District	Amargosa Creek Middle School, Endeavor Middle School, LAVA (Alternative Program), Miller Elementary School, Monte Vista Elementary School, Nancy Cory Elementary School, Sunnydale Elementary School, West Wind Elementary School,	VACANT
Lancaster School District	Desert View Elementary School, Discovery Elementary School,	1 DEPUTY

	Early Childhood Linda Verde Elementary School, Mariposa Elementary School, Piute Middle School, The Leadership Academy	
Lancaster School District	El Dorado Elementary School, Fulton & Alsbury Academy, Jack Northrup Elementary School, Joshua Elementary School, Lincoln Elementary School, New Vista Elementary School, Promise Academy Sierra Elementary School	1 DEPUTY

**PALMDALE STATION**

<b>SCHOOL INFORMATION</b>	<b>SCHOOL PATROLLED</b>	<b>DEPUTY ASSIGNED</b>
Palmdale School District	Desert Willow Elementary School, Manzanita Elementary School, Palm Tree Elementary School, Sage Middle School, Tamarisk Elementary School, Tumbleweed Elementary School, District Office	1 DEPUTY
Palmdale School District	Buena Vista Elementary School, Golden Poppy Elementary School, Los Amigos School, Quail Valley Middle School, Shadow Hills Middle School, Yellen Elementary School.	1 DEPUTY
Palmdale School District	Barrel Springs Middle School, Cactus Middle School, Cimarron Elementary School, Innovations/Site 18, Joshua Hills Elementary School, Oak Tree Community School.	1 DEPUTY
Palmdale School District	David G. Millen Middle School, Dos Caminos Elementary School, First Steps. Palmdale Learning Plaza, Ocotillo Elementary School, PDC, Summerwind Elementary School	1 DEPUTY
Palmdale School District	Chaparral Elementary School, Desert Rose Elementary School, Mesquite Elementary School, PACS, Yucca Elementary School	1 DEPUTY

**SANTA CLARITA VALLEY STATION**

<b>SCHOOL INFORMATION</b>	<b>SCHOOL PATROLLED</b>	<b>DEPUTY ASSIGNED</b>
William S. Hart Union School District	Valencia High School, Rio Norte Jr High School.	1 DEPUTY
William S. Hart Union School District	Canyon High School, Sierra Vista Jr. High School, Sequoia Charter High School	1 DEPUTY
William S. Hart Union School District	Golden Valley High School, La Mesa Jr., Bowman Highschool	1 DEPUTY
William S. Hart Union School District	Hart High School, Placerita Jr., Learning Post Academy, Golden Oak Adult School	1 DEPUTY
William S. Hart Union School District	Saugus High School, Bowman High School, Arroyo Seco Elementary School	1 DEPUTY
William S. Hart Union School District	Castaic High School, Castaic Middle School, Northlake Hills Elementary, Castaic Elementary School, Live Oak Elementary	1 DEPUTY
William S. Hart Union School District	West Ranch High School, Rancho Pico Jr, Academy of the Canyons	1 DEPUTY



**MALIBU/ LOST HILLS STATION**

<b>SCHOOL INFORMATION</b>	<b>SCHOOL PATROLLED</b>	<b>DEPUTY ASSIGNED</b>
Santa Monica-Malibu Unified School District	Malibu High School, Malibu Middle School, Webster Elementary School, Malibu Elementary School, Muse Global School, Oaks Christian High School, Middle School, Our Lady of Malibu School, Topanga Elementary School	1 DEPUTY
Santa Monica-Malibu Unified School District	Mesivta of Greater Los Angeles, Viewpoint School, Calabasas High School, AE Wright Middle School, AC Stelle Middle School, Bay Laurel Elementary School, Chaparral Elementary School, Lupin Hill Elementary School, Round Meadow Elementary	1 DEPUTY
Santa Monica-Malibu Unified School District	Agoura High School, Lindero Canyon Middle School, Butter cup Preschool, Mariposa/Sumac Elementary, White Oak Elementary School, Willow Elementary School, Yerba Buena Elementary School, Ilan Ramon Day School, St. Jude the Apostle School	1 DEPUTY

**Central Patrol**

**South Los Angeles Station**

<b>SCHOOL INFORMATION</b>	<b>SCHOOL PATROLLED</b>	<b>DEPUTY ASSIGNED</b>
Centinela Unified School District	Leuzinger High School	1 DEPUTY
Lawndale Elementary School District	Centinela Valley Union Elementary School	1 DEPUTY

**South Patrol**

**Lakewood Station**

<b>SCHOOL INFORMATION</b>	<b>SCHOOL PATROLLED</b>	<b>DEPUTY ASSIGNED</b>
ABC Unified School District	Artesia High School	1 DEPUTY
Paramount Unified School District	Paramount High School, Paramount West Campus, Odyssey Stem Academy, Buena Vista High School, Community Day School, Alondra Middle School, Zamboni Middle School, Jackson Middle School, Hollydale Elementary School, Collins Elementary School, Wesley Gaines Child Development, Jefferson Elementary School, Mark Keppel Elementary School, Lincoln Elementary School, Los Cerritos Elementary School, Mockler Elementary School, Roosevelt Elementary School, Howard Tanner Elementary School, Harry Wirtz Elementary School, Paramount Park Middle School	1 DEPUTY

### **Norwalk Station**

<b>SCHOOL INFORMATION</b>	<b>SCHOOL PATROLLED</b>	<b>DEPUTY ASSIGNED</b>
Whittier Union High School District	California High School	1 DEPUTY
Norwalk/La Mirada Unified School District	Norwalk High School, John Glenn High School, Southeast Academy	1 DEPUTY
Norwalk/La Mirada Unified School District	La Mirada High School, El Camino High School, Benton Middle School, Hutchinson Middle School, Heights Christian Middle School, Foster Rd Elementary School, Dulles Elementary School, La Pluma Elementary School, Escalona Elementary School, Gardenhill Elementary School, Eastwood Elementary School, Heights Christian Elementary School, Beattitudes of Our Lord Elementary School, Grow and Learn Center PRE-K, Biola University, Eagles Nest PRE-K.	1 DEPUTY

**Pico Rivera**

<b>SCHOOL INFORMATION</b>	<b>SCHOOL PATROLLED</b>	<b>DEPUTY ASSIGNED</b>
Whittier Union High School District	Pioneer High School	1 DEPUTY
El Rancho Unified School District	El Rancho High School, Ruben Salazar High School, Durfee Elementary, Magee Academy of Arts and Sciences, North Rancho Elementary School, Rio Vista Elementary School, South Rancho Dual Language Academy, Valencia Academy of the Arts, Rivera Middle School, Steam Academy Burke, El Rancho Adult Education Center, Early Learning Program, Birney Tech Academy	1 DEPUTY

**East Patrol**

**Crescenta Valley**

<b>SCHOOL INFORMATION</b>	<b>SCHOOL PATROLLED</b>	<b>DEPUTY ASSIGNED</b>
Glendale Unified School District	Crescenta Valley High School, Rosemont Middle School	1 DEPUTY
La Canada Flintridge Unified School District	La Canada High School, La Canada Elementary School, Palm Crest Elementary School, Paradise Canyon Elementary School	1 DEPUTY

**Industry**

<b>SCHOOL INFORMATION</b>	<b>SCHOOL PATROLLED</b>	<b>DEPUTY ASSIGNED</b>
Rowland Unified School District	Nogales High School	1 DEPUTY

**Temple**

<b>SCHOOL INFORMATION</b>	<b>SCHOOL PATROLLED</b>	<b>DEPUTY ASSIGNED</b>
El Monte Unified School District	South El Monte High School	1 DEPUTY
Rosemead Unified School District	Rosemead High School	1 DEPUTY
Duarte Unified School District	Beardslee Dual Language Academy, California School of the Arts, Duarte High School, Duarte Preschool, Maxwell Academy, Mount Olive Innovation and Technology High School, Royal Oaks Steam Academy, Valley View Academy of Technology & Creative Learning	1 DEPUTY

**Walnut**

<b>SCHOOL INFORMATION</b>	<b>SCHOOL PATROLLED</b>	<b>DEPUTY ASSIGNED</b>
Rowland Unified School District	Rowland High School	1 DEPUTY

## **School Resource Deputy Program Services and Meetings**

The involvement of School Resource Deputies (SRDs) in various events and meetings is vital for maintaining a safe and informed school community. Attending a variety of events and meetings allows School Resource Deputies to stay connected with the school community, address safety concerns, and work collaboratively with school officials to promote a safe and supportive learning environment for all students and staff. Below please find basic school demographics and event information.

### **Central Patrol Division**

<b>School Information</b>	<b>School Patrolled</b>	<b>No. of Students</b>
Centinela Unified School District	Leuzinger High School	~1,900
Centinela Unified School District	Jane Addams Middle School	~800
Centinela Unified School District	Will Rogers Middle School	~1,000
Centinela Unified School District	Lawndale High School	~2,300
Centinela Unified School District	R.K. Lloyd High School	~200

<b>Sporting Events</b>	<b>After School Events</b>	<b>In School Events</b>	<b>Safety Drills</b>	<b>Board Meeting</b>
11	11	0	0	1

### East Patrol Division

School Information	School Patrolled	No. of Students
El Monte Union School District	South El Monte High School	~1,300
Glendale Unified School District	Crescenta Valley High School	~2,488
Glendale Unified School District	Rosemont Middle School	~1,275
La Canada Flintridge Unified School District	La Canada High School	~1,993
La Canada Flintridge Unified School District	La Canada Elementary School	~622
La Canada Flintridge Unified School District	Palm Crest Elementary School	~599
La Canada Flintridge Unified School District	Paradise Canyon Elementary School	~657
Rowland Unified School District	Nogales High School	~1668

Sporting Events	After School Events	In School Events	Safety Drills	Board Meeting
8	9	5	2	1

### South Patrol Division

School Information	School Patrolled	No. of Students
El Rancho Unified School District	El Rancho High School	~2,244
El Rancho Unified School District	Durfee Elementary School	~344
El Rancho Unified School District	Valencia Elementary School	~365
El Rancho Unified School District	Rio Vista Elementary School	~420
El Rancho Unified School District	Rivera Elementary School	~586
El Rancho Unified School District	Steam Academy Burke School	~538
Paramount Unified School District	Paramount High School	~3,737
Paramount Unified School District	Paramount West Campus	~900
Paramount Unified School District	Odyssey Stem Academy	~492
Paramount Unified School District	Buena Vista High School	~175
Paramount Unified School District	Community Day School	~18
Paramount Unified School District	Alondra Middle School	~779
Paramount Unified School District	Zamboni Middle School	~737
Paramount Unified School District	Paramount Park Middle School	~565
Paramount Unified School District	Jackson Middle School	~695
ABC Unified School District	Artesia High School	~1,441

Sporting Events	After School Events	In School Events	Safety Drills	Board Meeting
18	8	37	4	0



### North Patrol Division

School Information	School Patrolled	No. of Students
Glendale Unified School District	Crescenta Valley High School	~2,488
Glendale Unified School District	Rosemont Middle School	~1,275
Palmdale School District	Shadow Hills Middle School	~891
Palmdale School District	Tamarisk Elementary School	~737
Palmdale School District	Palm Tree Elementary School	~510
Palmdale School District	Buena Vista Elementary School	~574
Palmdale School District	Yellen Learning Center	~59
Palmdale School District	Palmdale Academy Charter School	~640
Lancaster School District	Amargosa Creek Middle School	973
Lancaster School District	Desert View Elementary School	~691
Lancaster School District	Piute Middle School	~731
Lancaster School District	Sierra Elementary	~691
Antelope Valley Union High School District	Antelope Valley High School	~1,588
Antelope Valley Union High School District	Eastside High School	~2,650
Antelope Valley Union High School District	Pete Knight High School	~2,793
Antelope Valley Union High School District	Palmdale High School	~2,443
Antelope Valley Union High School District	Highland High School	~2,790

Sporting Events	After School Events	In School Events	Safety Drills	Board Meeting
11	10	66	0	2

## **School Resource Deputy Program Statistics**

**April 2024 – June 2024**

The School Resource Deputy program utilizes two statistical codes to differentiate a program response vs a station response. 801 is used for criminal contact by a School Resource Deputy; 802 is used by the School Resource Deputies for non-criminal contacts. A breakdown of call clearance code by month and station is shown below.

\*\*Please note this is not a count of the number of contacts, but of the number of incidents.

In Quarter 4 2024, criminal contacts by a School Resource Deputy accounted for 5.93% of all calls entered by the deputies.

Station	April 2024		May 2024		June 2024		Quarter 4, 2024	
	801	802	801	802	801	802	Total Calls	% 801 contact
CVS	6	18	1	14	0	31	70	10%
IDT	0	21	0	11	0	4	36	0.00%
LAN	36	424	29	440	6	124	1,059	6.70%
LKD	0	37	0	14	0	43	94	0.00%
NWK	0	56	0	27	0	15	98	0.00%
PLM	18	236	10	101	0	0	365	7.67%
PRV	1	17	2	13	0	6	39	7.69%
SCT	3	241	12	151	0	1	408	3.67%
SLA	6	18	3	20	0	5	52	17.30%
TEM	3	34	0	30	0	24	91	3.29%
WAL	0	0	0	0	0	0	0	0.00%
<b>TOTAL</b>	<b>73</b>	<b>1,083</b>	<b>57</b>	<b>821</b>	<b>6</b>	<b>253</b>	<b>2,293</b>	<b>5.93%</b>

## **School Resource Deputy Collaborations**

School Resource Deputies (SRDs) contribute significantly to the safety and well-being of school communities, they also face various challenges in fulfilling their roles effectively. By addressing these challenges through ongoing training, collaboration, and community engagement, School Resource Deputies can continue to make positive contributions to schools and support the success of all students. Below are some of the following Los Angeles County entities the School Resource Deputies collaborated with.

- Office of Youth Violence Prevention
- Youth Summit Seminar
- De-escalation and Violence Risk Assessment (Dr. Marenda Tran)
- Threat Assessment/RAM
- Adolescent Mental Health team
- Los Angeles County Youth Development (Diversion Program)
- Los Angeles County School Resource 40-Hour training course
- Los Angeles County District Attorney's Office; Investigator Ian Phan: Juvenile Law and Diversion
- Basic Vulnerability Assessments for School facilities (Joint Regional Intelligence Center).

## **School Resource Deputy Trainings**

Deputies assigned to the School Resource Deputy program have participated in the following trainings:

- Active Shooter
- AR-15 (Weapon certifications)
- Semi-Annual basic shooting requirements
- School Resource Deputy 40-Hour Training Course
- Tactical Combat Casualty Care (First Aid)

## **School Resource Deputy Success Stories**

### **Central Patrol Division**

Centinela Valley Unified School District School Administrator comment:

Deputy Hilliard is not only a School Resource Deputy but also an invaluable mentor to the students at Lawndale Elementary School District (LESD). With a genuine commitment to their well-being and growth, Deputy Hilliard readily engages with the students and provides the necessary support and guidance they may require. Furthermore, Deputy Hilliard's positive impact extends beyond the students, as he serves as a valuable resource for parents and LESD staff. Always responsive and eager to lend a helping hand, Deputy Hilliard consistently demonstrates his dedication to the community. Deputy Hilliard understands the importance of building strong partnerships with students, parents, and school administrators. By fostering relationships based on trust, open communication, and mutual respect, he creates an environment that nurtures positive connections. Recognizing that collaboration between the school, parents, and the community is paramount to the safety and well-being of the students, Deputy Hilliard actively participates in various initiatives. Whether it be attending town hall meetings, or simply being available to address concerns, Deputy Hilliard consistently goes above and beyond expectations. Through his efforts, Deputy Hilliard plays a significant role in creating a welcoming and inclusive educational environment for all involved. His friendly demeanor and dedication to fostering positive relationships make him an invaluable asset to the school and to the community.

The Peace Officers Association of Los Angeles County (POALAC) is pleased to announce Deputy Troy Hilliard has been selected to receive the 2023 Centurion Award for Excellence in Community Policing - Individual.