



---

# CUSTODY DIVISION POPULATION QUARTERLY REPORT

*April - June 2023*

Los Angeles County Sheriff's Department

---

*Robert G. Luna, Sheriff*

---

# TABLE OF CONTENTS

Executive Summary.....	3
1. Population Trends.....	4
Los Angeles County Inmate Population Graph	
Monthly Average Daily Inmate Population (ADIP) Trend	
Arrests, Bookings, and Releases	
Release Practices	
Homeless and Veteran	
2. Facilities Overview.....	10
Rated Capacities - Board of State and Community Corrections (BSCC)	
Jail Housing Facilities	
Men's Central Jail (MCJ)	
Twin Towers Correctional Facility (TTCF)	
Century Regional Detention Facility (CRDF)	
Pitchess Detention Center (PDC) – East	
Pitchess Detention Center (PDC) – North	
Pitchess Detention Center (PDC) – South	
North County Correctional Facility (NCCF)	
3. Population Overview.....	17
Inmate Population Demographics	
Inmate Population Offender Age Groups	
Jail Population by Security Level	
Inmate Population Breakdown	
Crime Classification Statistics	
Inmates with M7 (Assaultive Charges)	
No Cases Adjudicated	
No Cases Adjudicated Misdemeanor Population	
Mental Health Inmate Population	
Misdemeanor Incompetent to Stand Trial (MIST)	
Americans with Disabilities Act (ADA)	
Medical Housing	
4. In-Custody Programs.....	30
Credit Earnings	
Conservation Work Program (CWP)	
Education Based Incarceration Program (EBI-Milestone)	
Fire Camp Training Program	
California Department of Corrections and Rehabilitation (CDCR) Fire Camp Program	
In-Custody Substance Treatment and Reentry Transition (START) Program	

5. Alternatives to Custody (ATC) Programs.....	34
Community Transition Unit (CTU)	
Substance Treatment and Reentry Transition (START)	
Female Programs	
Veteran’s Administration (VA)	
Community Based Alternatives to Custody (CBAC)	
Los Angeles County ATC Inmate Population Graph	
6. Re-Entry Assistance.....	38
Community Re-Entry and Resource Center (CRRC)	
CTU Coordinated Releases to Various Programs	
CTU Vital Records	

## EXECUTIVE SUMMARY

The Los Angeles County Sheriff's Department (Department) is committed to maintaining a secure and constitutional jail system. As part of this effort, a periodic report is essential to better understand and quantify population trends. This ***Custody Division Population Quarterly Report*** summarizes data collected during the second quarter of 2023 and is produced by the Population Management Bureau (PMB) Analysis Unit.

The Average Daily Inmate Population (ADIP) in the Los Angeles County (County) jail system during the second quarter of 2023 was 13,488. This is higher than the second quarter of 2022 average of 12,987.

To manage the inmate population, the Department continued to use percentage release. The short sentence releases have remained at 240 days since July 24, 2022. Inmates serving traditional county sentences completed 10 percent of their court ordered sentences. Inmates serving sentences for felony serious and/or violent offenses (M7 charges) served 100 percent of their sentences, minus any time credits earned. Inmates sentenced under 1170 PC (AB109) served 100 percent of their sentences, minus any time credits earned.

Since March 2020, the Department implemented various measures to reduce the jail's inmate population in an effort to mitigate the spread of the COVID-19 virus among those incarcerated and staff. With the safety of the communities in mind and with an emphasis on those inmates that were medically vulnerable, the Department worked in a collaborative process with the District Attorney, Public Defender, Alternate Public Defender, Superior Court and Office of Diversion and Reentry, to reduce the overall inmate population.

The Traditional County Sentenced (TCS) population this quarter was approximately 875, slightly higher than last quarter's total of 812. The number of inmates sentenced under 1170 PC was approximately 1,122, which is higher than last quarter's total of 1,061.

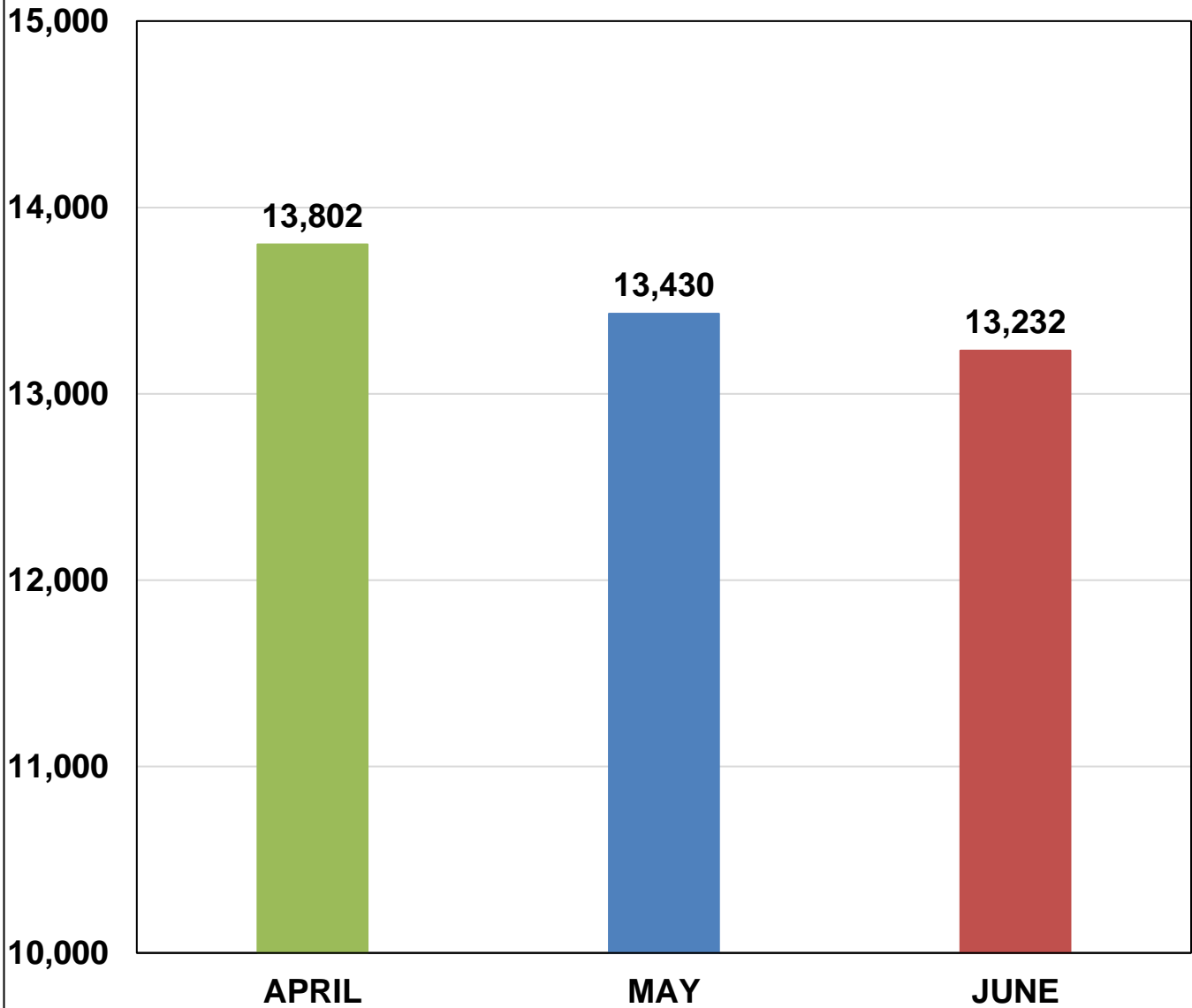
The mental health population decreased from 5,671 last quarter to 5,520 this quarter and comprised 41 percent of the total inmate population. During the second quarter of 2022, the mental health population was 5,529 and comprised 43 percent of the total inmate population.

*Information encompassed in this report/document depicts data related to a specific date and time. Data may differ based on numerous factors related to an inmate's status, disposition, facility, etc. Information may differ based on systems queried, archived information, date/time parameters or numerous other factors. Information in disparate reports should not be combined as data sets may be inconsistent in queries and responses.*

# POPULATION TRENDS

**LASD INMATE POPULATION**

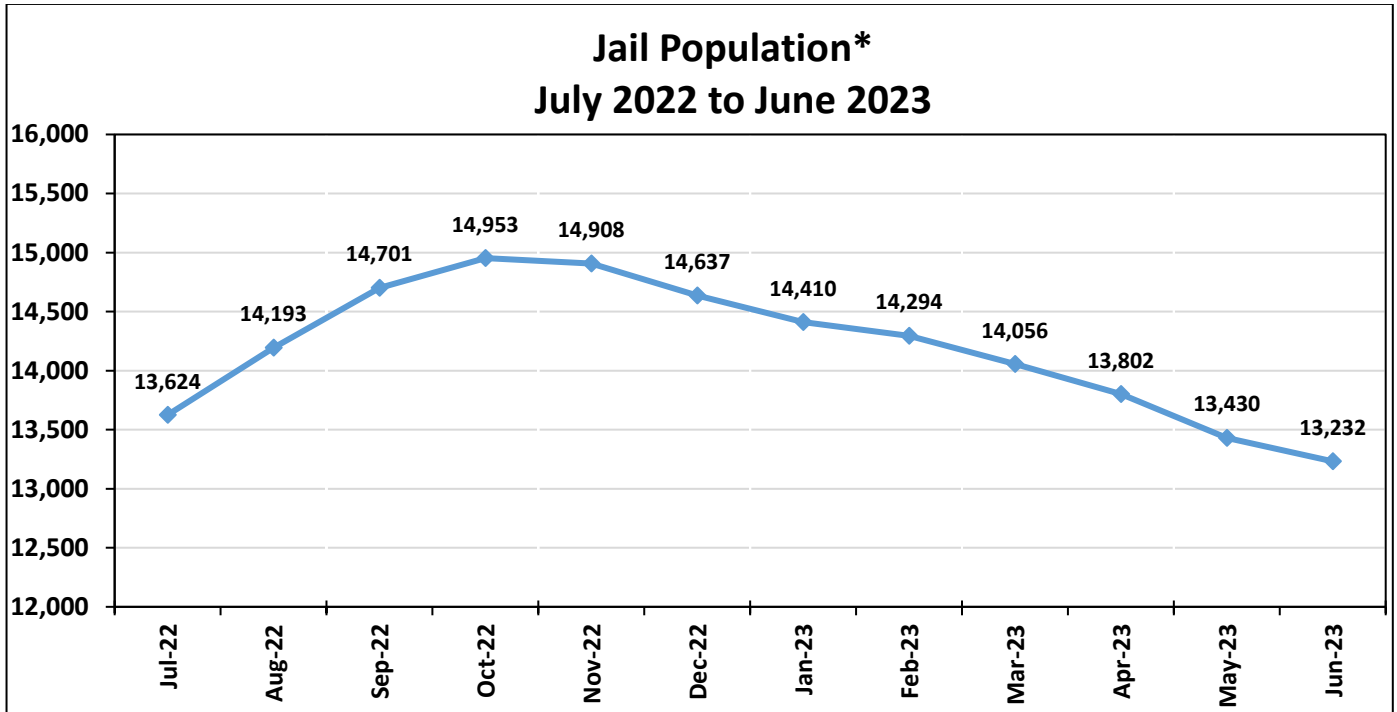
**Second Quarter 2023  
Los Angeles County Overall Inmate Count**



<b>2023 Quarterly Overall Division Average Daily Inmate Population (ADIP) *</b>
13,488

*\*Quarterly Division ADIP reflects all inmates processed into IRC, excludes ATC.*

## MONTHLY ADIP TREND



Yearly ADIP Comparison		
Year	ADIP	Notes
2011	15,014	(October - AB109 enacted)
2012	18,043	
2013	18,687	
2014	18,681	(November - Prop 47)
2015	17,049	
2016	16,613	
2017	17,024	
2018	16,910	
2019	17,070	
2020	14,212	(March - COVID-19) (June - Zero Bail enacted)
2021	14,577	
2022	13,807	(June - Zero Bail ended)
2023	13,871	Data collected through June 2023 (May - Zero Bail enacted)

\*Excludes Alternatives to Custody

## SECOND QUARTER 2023 - ARREST AND BOOKING STATS

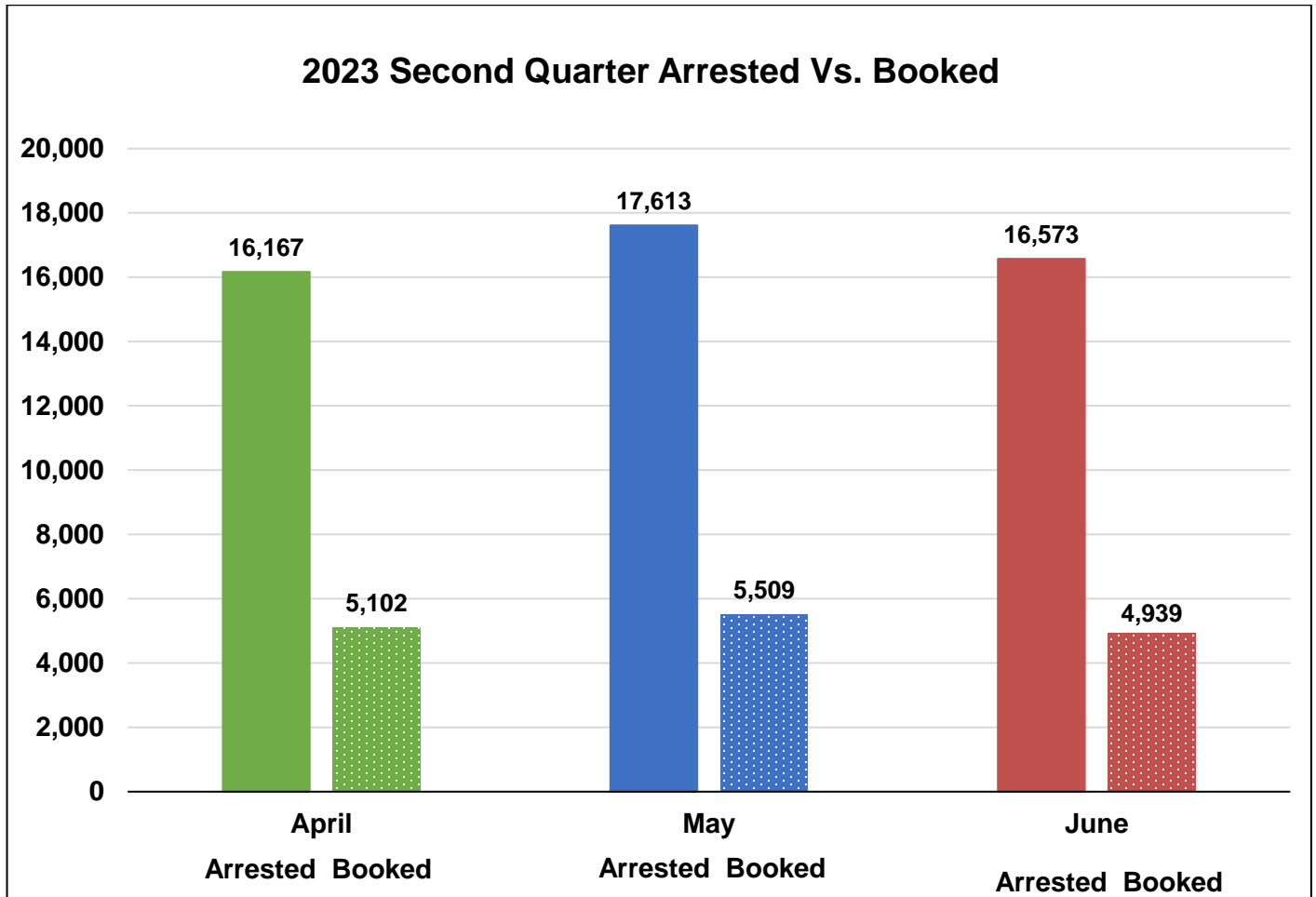
Arrest activity increased 8% to 50,353 versus last quarter (46,668). The number of inmates booked into the County jail this quarter increased 3% to 15,550 versus last quarter (15,059).

	April		May		June		Quarterly Total	Quarterly Average	Quarterly %
	Monthly Total	%	Monthly Total	%	Monthly Total	%			
<b>Felony</b>	7,910	49%	8,580	49%	8,374	51%	24,864	8,288	49%
<b>Misdemeanor</b>	8,162	50%	8,925	50%	8,120	49%	25,207	8,402	50%
<b>Other*</b>	95	1%	108	1%	79	0%	282	94	1%
<b>Total Arrested</b>	<b>16,167</b>		<b>17,613</b>		<b>16,573</b>		<b>50,353</b>	<b>16,784</b>	<b>100%</b>
<b>Total Booked into LA County</b>	<b>5,102</b>	<b>32%</b>	<b>5,509</b>	<b>31%</b>	<b>4,939</b>	<b>30%</b>	<b>15,550</b>	<b>5,183</b>	<b>31%</b>

\*Other includes child welfare, delinquent, infraction, and non-specific charges.

## SECOND QUARTER 2023 - ARRESTS VS. BOOKINGS

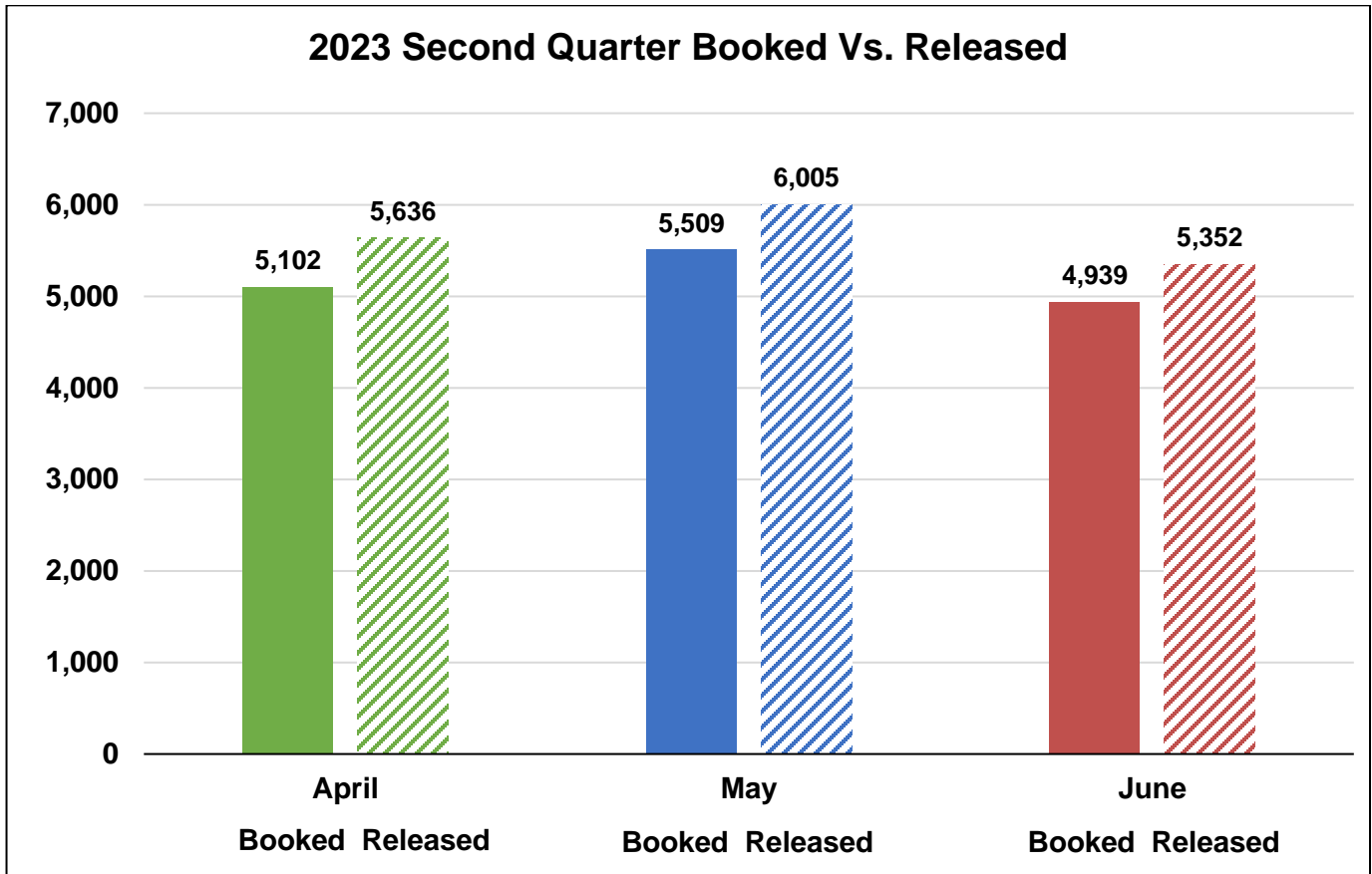
The graph below compares the total arrests and bookings for this quarter.





## SECOND QUARTER 2023 – BOOKINGS VS. RELEASES

The Department averaged approximately 5,664 releases this quarter. This is a 6% increase compared to last quarter's average of 5,368 releases.



## COUNTY JAIL RELEASE PRACTICES

To manage the inmate population, traditional county sentenced inmates were subject to early release under the following conditions. In an effort to mitigate the spread of COVID-19, additional release measures were used. The M7 charges were modified, and additional releases were made in collaboration with other county agencies. Bookings were affected by bail changes and COVID-19. CDCR continued to accept state prisoners.

Month	Release Criteria		M7 Release Criteria <sup>1</sup>		Short Sentence <sup>2</sup>	
	Male	Female	Felony	Misdemeanor	Male	Female
April	10%	10%	100%	100%	240 days	240 days
May	10%	10%	100%	100%	240 days	240 days
June	10%	10%	100%	100%	240 days	240 days

<sup>1</sup> Inmates classified as M7 have sentences for designated serious and/or violent offenses or have notoriety in the community, which requires their record jacket to go through extra security checks upon release from LASD's custody.

<sup>2</sup> Shorts are inmates sentenced to a term in county jail, which after all legal credits are awarded and the current jail percentage time is considered, are immediately released from LASD's custody after processing from court.

## HOMELESS

The chart below provides an average breakdown of the homeless inmate population who stated they were homeless by gender, major race, and age category. The homeless inmates comprised 26% of the total population.<sup>1</sup>

	April	May	June	Average
<b>Male</b>	2,996	2,906	2,909	<b>2,937</b>
<b>Female</b>	544	532	530	<b>535</b>
<b>Total</b>	<b>3,540</b>	<b>3,438</b>	<b>3,439</b>	<b>3,472</b>

	April	May	June	Average
<b>Hispanic</b>	1,866	1,811	1,816	<b>1,831</b>
<b>Black</b>	1,025	1,000	997	<b>1,007</b>
<b>White</b>	523	515	518	<b>519</b>
<b>Other</b>	126	112	108	<b>115</b>
<b>Total</b>	<b>3,540</b>	<b>3,438</b>	<b>3,439</b>	<b>3,472</b>

	April	May	June	Average
<b>18 to 25</b>	462	457	483	<b>467</b>
<b>26 to 34</b>	1,370	1,310	1,288	<b>1,323</b>
<b>35 to 39</b>	566	552	566	<b>561</b>
<b>40 to 44</b>	494	470	466	<b>477</b>
<b>45 &amp; Older</b>	648	649	636	<b>644</b>
<b>Total</b>	<b>3,540</b>	<b>3,438</b>	<b>3,439</b>	<b>3,472</b>

<sup>1</sup> Homeless data is collected from COMPAS based on a snapshot of the inmate population collected each business day. These are numbers based upon self-identification and have not been confirmed.

## VETERAN

The chart below provides an average breakdown of the veteran inmate population who stated they have served in the United States Military by gender, major race, and age category. The veteran inmates comprised 2% of the total population.<sup>2</sup>

	April	May	June	Average
<b>Male</b>	264	247	246	<b>252</b>
<b>Female</b>	4	6	6	<b>5</b>
<b>Total</b>	<b>268</b>	<b>253</b>	<b>252</b>	<b>257</b>

	April	May	June	Average
<b>Hispanic</b>	89	85	84	<b>86</b>
<b>Black</b>	83	80	80	<b>81</b>
<b>White</b>	79	74	79	<b>77</b>
<b>Other</b>	17	14	9	<b>13</b>
<b>Total</b>	<b>268</b>	<b>253</b>	<b>252</b>	<b>257</b>

	April	May	June	Average
<b>18 to 25</b>	13	15	16	<b>15</b>
<b>26 to 34</b>	56	54	59	<b>56</b>
<b>35 to 39</b>	44	42	43	<b>43</b>
<b>40 to 44</b>	42	42	43	<b>42</b>
<b>45 &amp; Older</b>	113	100	91	<b>101</b>
<b>Total</b>	<b>268</b>	<b>253</b>	<b>252</b>	<b>257</b>

<sup>2</sup> Veteran data is collected from COMPAS based on a snapshot of the inmate population collected each business day. These are numbers based upon self-identification and have not been confirmed by the Veterans Administration.

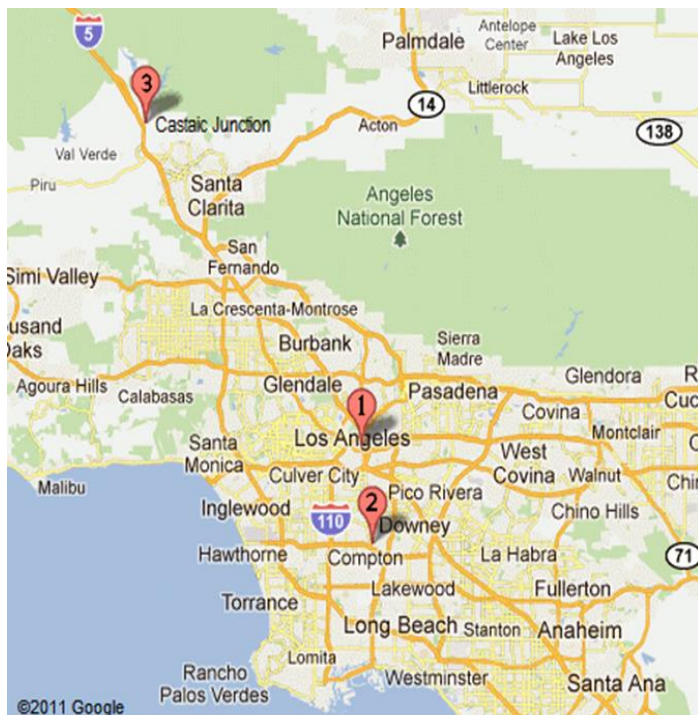
# FACILITIES OVERVIEW

## RATED CAPACITY

The Board of State and Community Corrections (BSCC) is a government body which recommends capacity limits for county jails. The BSCC conducts biennial jail inspections; the Department was rated in July 2020. The BSCC does not rate processing, medical and discipline beds.

<b>Board of State and Community Corrections</b>				
<b>LASD Custody Facilities</b>	<b>BSCC Rated Capacity</b>	<b>Quarterly Facility ADIP</b>	<b>Above BSCC Rated Capacity</b>	<b>% Over BSCC Capacity</b>
Men's Central Jail	3,512	3,420	-92	-3%
Men's Central Jail Outpatient Clinic	Unrated	359	-	-
Twin Towers Correctional Facility	2,432	2,317	-115	-5%
Correctional Treatment Center	Unrated	118	-	-
Century Regional Detention Facility	1,708	1,449	-259	-15%
CRDF Reception Center	Unrated	2	-	-
Pitchess Detention Center – East	926	34	-892	-96%
Pitchess Detention Center – North	830	1,239	409	49%
Pitchess Detention Center – South	782	962	180	23%
North County Correctional Facility	2,214	3,357	1,143	52%
Inmate Reception Center	Unrated	206	-	-
LCMC Jail Wards	Unrated	23	-	-
<b>Total BSCC Rated Capacity*</b>	<b>Rated Quarterly Facility ADIP</b>	<b>Total Above BSCC Rated Capacity</b>	<b>Total % Over BSCC Capacity</b>	<b>Total % Over BSCC Capacity Excluding East Facility</b>
12,404	12,778	374	3%	11%

\*Statistical data gathered from *Board of State and Community Corrections Inspection Report 07/2020*



<b>LA County Jail Facilities</b>	
<b>1</b>	<ul style="list-style-type: none"> <li>➤ Men's Central Jail (MCJ)</li> <li>➤ Twin Towers Correctional Facility (TCF)</li> <li>➤ Los Angeles County Medical Center (LCMC)</li> <li>➤ Correctional Treatment Center (CTC)</li> <li>➤ Inmate Reception Center (IRC)</li> </ul>
<b>2</b>	<ul style="list-style-type: none"> <li>➤ Century Regional Detention Facility (CRDF)</li> </ul>
<b>3</b>	<ul style="list-style-type: none"> <li>➤ Pitchess Detention Center (PDC)</li> <li>➤ PDC East Facility</li> <li>➤ PDC North Facility</li> <li>➤ PDC South Facility</li> <li>➤ North County Correctional Facility (NCCF)</li> </ul>

## JAIL HOUSING FACILITIES

<b>MEN'S CENTRAL JAIL TOTAL INMATE POPULATION 2023</b>					
<b>Security Level</b>	<b>April</b>	<b>May</b>	<b>June</b>	<b>Quarterly Average</b>	<b>% of Population</b>
Security Level Low 1-4	213	232	233	<b>226</b>	<b>6%</b>
Security Level Medium 5-7	2,253	2,198	2,236	<b>2,229</b>	<b>59%</b>
Security Level High 8-9	1,404	1,307	1,258	<b>1,323</b>	<b>35%</b>
<b>Facility Total</b>	<b>3,870</b>	<b>3,737</b>	<b>3,727</b>	<b>3,778</b>	<b>100%</b>
<b>SUBPOPULATION HOUSED THROUGHOUT FACILITY<sup>1</sup></b>					
<b>Housing Type</b>	<b>April</b>	<b>May</b>	<b>June</b>	<b>Quarterly Average</b>	
Administratively Segregated (K-10) <sup>2</sup>	52	41	36	<b>43</b>	
Restrictive Housing (K-17, K-18, K-19, K-20) <sup>3</sup>	252	238	263	<b>251</b>	
Americans with Disabilities Act (ADA)	194	198	185	<b>192</b>	
Discipline	41	39	38	<b>39</b>	
General Population on Psychotropic Meds	461	409	414	<b>428</b>	
Inmate Workers	349	361	339	<b>350</b>	
LGBT (K-6G)	317	309	311	<b>312</b>	
Medical/Clinic	374	355	363	<b>364</b>	
Other (K-6T/B) <sup>4</sup>	256	220	212	<b>229</b>	
Pro-Per	68	69	65	<b>67</b>	
EBI / START	177	172	94	<b>148</b>	
Mentally Ill – Moderate Observation / Service Area (MOH)	894	927	908	<b>910</b>	
Sex Crimes Against Children (K-6Y)	257	258	257	<b>257</b>	
Developmentally Disabled	10	11	10	<b>10</b>	

<sup>1</sup> Subpopulation housed throughout facility includes those who are classified with special housing needs and are included in the total inmate population. An inmate may belong to more than one subpopulation.

<sup>2</sup> K-10 Administratively segregated for various reasons including danger to self or others.

<sup>3</sup> K-17 Disruptive; K-18 Protective Custody; K-19 Major Disruptive; K-20 Highly Dangerous.

<sup>4</sup> K-6T Contempt of court, K-6B threatened by others.

\* Statistical data are averages gathered from Facility Count Sheet every Tuesday.

<b>TWIN TOWERS CORRECTIONAL FACILITY TOTAL INMATE POPULATION 2023</b>					
<b>Security Level</b>	<b>April</b>	<b>May</b>	<b>June</b>	<b>Quarterly Average</b>	<b>% of Population</b>
Security Level Low 1-4	172	178	185	<b>178</b>	<b>7%</b>
Security Level Medium 5-7	1,841	1,800	1,772	<b>1,804</b>	<b>74%</b>
Security Level High 8-9	482	457	485	<b>475</b>	<b>19%</b>
<b>Facility Total</b>	<b>2,495</b>	<b>2,435</b>	<b>2,442</b>	<b>2,457</b>	<b>100%</b>

<b>SUBPOPULATION HOUSED THROUGHOUT FACILITY<sup>1</sup></b>				
<b>Housing Type</b>	<b>April</b>	<b>May</b>	<b>June</b>	<b>Quarterly Average</b>
Administratively Segregated (K-10) <sup>2</sup>	111	118	104	<b>111</b>
Restrictive Housing (K-17, K-18, K-19, K-20) <sup>3</sup>	120	124	136	<b>127</b>
Administratively Segregated (K-1) <sup>4</sup>	5	5	7	<b>6</b>
Administratively Segregated (K-6B) <sup>5</sup>	128	131	153	<b>137</b>
Americans With Disabilities (ADA)	195	177	199	<b>190</b>
Discipline	12	14	11	<b>12</b>
Female Medical (CTC)	17	20	22	<b>20</b>
General Population on Psychotropic Meds Security Level 1-4	9	9	9	<b>9</b>
General Population on Psychotropic Meds Security Level 5-7	159	158	178	<b>165</b>
General Population on Psychotropic Meds Security Level 8-9	42	41	40	<b>41</b>
LGBT (K-6G)	45	42	43	<b>43</b>
Education Based Incarceration (EBI)	268	287	255	<b>270</b>
Medical (CTC)	107	100	93	<b>100</b>
Mentally Ill – High Observation Housing (HOH)	1,228	1,227	1,188	<b>1,214</b>
Mentally Ill – Moderate Observation / Service Area (MOH)	2,687	2,702	2,746	<b>2,712</b>
Mentally Ill – Moderate Observation Housing (MOH) Sex Crimes Against Children (K-6Y)	67	52	56	<b>58</b>

<sup>1</sup> Subpopulation housed throughout facility includes those who are classified with special housing needs and are included in the total inmate population. An inmate may belong to more than one subpopulation.

<sup>2</sup> K-10: Administratively segregated for various reasons including danger to self or others.

<sup>3</sup> K-17: Disruptive; K-18: Protective Custody; K-19: Major Disruptive; K-20: Highly Dangerous.

<sup>4</sup> K-1 Law Enforcement relation in custody.

<sup>5</sup> K-6B: Administratively segregated are at risk of assault in GP housing.

\* Statistical data are averages gathered from Facility Count Sheet every Tuesday.

<b>CENTURY REGIONAL DETENTION FACILITY TOTAL INMATE POPULATION 2023</b>					
<b>Security Level</b>	<b>April</b>	<b>May</b>	<b>June</b>	<b>Quarterly Average</b>	<b>% of Population</b>
Security Level Low 1-4	216	206	195	<b>206</b>	<b>14%</b>
Security Level Medium 5-7	976	995	1,006	<b>992</b>	<b>67%</b>
Security Level High 8-9	287	285	256	<b>276</b>	<b>19%</b>
<b>Facility Total</b>	<b>1,479</b>	<b>1,486</b>	<b>1,457</b>	<b>1,474</b>	<b>100%</b>

<b>SUBPOPULATION HOUSED THROUGHOUT FACILITY<sup>1</sup></b>				
<b>Housing Type</b>	<b>April</b>	<b>May</b>	<b>June</b>	<b>Quarterly Average</b>
Administratively Segregated (K-10) <sup>2</sup>	17	17	6	<b>13</b>
Restrictive Housing (K-17, K-18, K-19, K-20) <sup>3</sup>	35	31	33	<b>33</b>
Americans With Disabilities Act (ADA)	29	25	28	<b>27</b>
K-8 Pregnant, Post-partum, Miscarriage or Terminated Pregnancy	29	30	33	<b>31</b>
Discipline	20	20	16	<b>19</b>
Inmate Workers	125	133	169	<b>142</b>
Medical/Clinic	4	4	3	<b>4</b>
Mentally III – High Observation Housing (HOH)	393	407	403	<b>401</b>
Mentally III – Moderate Observation Housing / Service Area (MOH)	312	349	342	<b>334</b>
Administratively Segregated (K-6B) <sup>4</sup>	9	9	9	<b>9</b>
Education Based Incarceration (EBI) <sup>5</sup>	114	124	128	<b>122</b>
Sex Crimes Against Children (K-6Y)	4	4	4	<b>4</b>

<sup>1</sup> Subpopulation housed throughout facility includes those who are classified with special housing needs and are included in the total inmate population. An inmate may belong to more than one subpopulation.

<sup>2</sup> K-10-Administratively segregated for various reasons including danger to self or others.

<sup>3</sup> K-17: Disruptive; K-18: Protective Custody; K-19: Major Disruptive; K-20: Highly Dangerous.

<sup>4</sup> K-6B: Administratively segregated are at risk of assault in GP housing.

<sup>5</sup> EBI includes MOH and GP inmates as of April 2023

\* Statistical data are averages gathered from Facility Count Sheet every Tuesday.

PITCHESS DETENTION CENTER – EAST FACILITY (FIRE CAMP) TOTAL INMATE POPULATION 2023					
Security Level	April	May	June	Quarterly Average	% of Population
Security Level Low 1-4	12	13	22	16	47%
Security Level Medium 5-7	23	19	13	18	53%
Security Level High 8-9	0	0	0	0	0%
<b>Facility Total</b>	<b>35</b>	<b>32</b>	<b>35</b>	<b>34</b>	<b>100%</b>

\* Statistical data are averages gathered from Facility Count Sheet every Tuesday.

PITCHESS DETENTION CENTER – NORTH TOTAL INMATE POPULATION 2023					
Security Level	April	May	June	Quarterly Average	% of Population
Security Level Low 1-4	57	66	67	63	5%
Security Level Medium 5-7	998	997	1,003	999	80%
Security Level High 8-9	201	176	171	183	15%
<b>Facility Total</b>	<b>1,256</b>	<b>1,239</b>	<b>1,241</b>	<b>1,245</b>	<b>100%</b>

**SUBPOPULATION HOUSED THROUGHOUT FACILITY<sup>1</sup>**

HOUSING TYPE	April	May	June	Quarterly Average
Discipline	10	14	11	12
Education Based Incarceration (EBI) K-6Y	79	74	33	62
Sex Crimes Against Children (K-6Y)	348	336	318	334
Mentally Ill - Moderate Observation Housing (MOH)	772	690	803	755

<sup>1</sup> Subpopulation housed throughout facility includes those who are classified with special housing needs and are included in the total inmate population. An inmate may belong to more than one subpopulation.

\* Statistical data are averages gathered from Facility Count Sheet every Tuesday.



**PITCHESS DETENTION CENTER - SOUTH  
TOTAL INMATE POPULATION  
2023**

Security Level	April	May	June	Quarterly Average	% of Population
Security Level Low 1-4	137	154	182	158	17%
Security Level Medium 5-7	868	807	705	793	83%
<b>Facility Total</b>	<b>1,005</b>	<b>961</b>	<b>887</b>	<b>951</b>	<b>100%</b>

**SUBPOPULATION HOUSED THROUGHOUT FACILITY<sup>1</sup>**

Housing Type	April	May	June	Quarterly Average
Programs	161	162	143	155
Inmate Workers	176	177	156	170

<sup>1</sup> Subpopulation housed throughout facility includes those who are classified with special housing needs and are included in the total inmate population. An inmate may belong to more than one subpopulation.

\* Statistical data are averages gathered from Facility Count Sheet every Tuesday.

**NORTH COUNTY CORRECTIONAL FACILITY  
TOTAL INMATE POPULATION  
2023**

Security Level	April	May	June	Quarterly Average	% of Population
Security Level Low 1-4	139	147	149	145	4%
Security Level Medium 5-7	2,141	2,089	2,147	2,126	64%
Security Level High 8-9	1,182	1,112	944	1,079	32%
<b>Facility Total</b>	<b>3,462</b>	<b>3,348</b>	<b>3,240</b>	<b>3,350</b>	<b>100%</b>

**SUBPOPULATION HOUSED THROUGHOUT FACILITY<sup>1</sup>**

Housing Type	April	May	June	Quarterly Average
Restrictive Housing (K-17, K-18, K-19, K-20) <sup>2</sup>	20	17	17	18
Administratively Segregated (K6-B)	178	175	178	177
Discipline	70	73	65	69
Inmate Workers	508	465	465	479
Education Based Incarceration (EBI)	78	84	79	80
Veterans <sup>3</sup>	0	0	0	0

<sup>1</sup> Subpopulation housed throughout facility includes those who are classified with special housing needs and are included in the total inmate population. An inmate may belong to more than one subpopulation.

<sup>2</sup> K-17: Disruptive; K-18: Protective Custody; K-19: Major Disruptive; K-20: Highly Dangerous.

<sup>3</sup> There is no exclusive EBI Veterans' housing as of April 2023

\* Statistical data are averages gathered from Facility Count Sheet every Tuesday.

# POPULATION OVERVIEW

## INMATE POPULATION DEMOGRAPHICS

Racial demographics this quarter indicate the three most populous racial groups within the County jail for both male and female offenders are Hispanic (55%), Black (29%), and White (13%).

Combined	April 2023		May 2023		June 2023		Quarterly Average	Quarterly %
	Race	Population	%	Population	%	Population		
Hispanic	7,556	55%	7,319	55%	7,145	54%	7,340	55%
Black	4,013	29%	3,915	29%	3,877	29%	3,935	29%
White	1,710	13%	1,674	13%	1,705	13%	1,696	13%
All Others	440	3%	427	3%	409	3%	426	3%
Chinese	49	0%	48	0%	47	1%	48	0%
Filipino	27	0%	25	0%	21	0%	25	0%
Pacific Islanders	15	0%	12	0%	14	0%	13	0%
Japanese	4	0%	1	0%	1	0%	2	0%
American Indian	10	0%	8	0%	10	0%	9	0%
<b>Total</b>	<b>13,824</b>	<b>100%</b>	<b>13,429</b>	<b>100%</b>	<b>13,229</b>	<b>100%</b>	<b>13,494</b>	<b>100%</b>

Male	April 2023		May 2023		June 2023		Quarterly Average	Quarterly %
	Race	Population	%	Population	%	Population		
Hispanic	6,888	56%	6,624	56%	6,477	55%	6,663	56%
Black	3,541	29%	3,445	29%	3,406	29%	3,464	29%
White	1,441	12%	1,416	12%	1,448	13%	1,435	12%
All Others	373	3%	370	3%	348	3%	364	3%
Chinese	42	0%	40	0%	41	0%	41	0%
Filipino	23	0%	20	0%	16	0%	20	0%
Pacific Islanders	13	0%	11	0%	13	0%	12	0%
Japanese	3	0%	1	0%	1	0%	2	0%
American Indian	10	0%	8	0%	10	0%	9	0%
<b>Total</b>	<b>12,334</b>	<b>100%</b>	<b>11,935</b>	<b>100%</b>	<b>11,760</b>	<b>100%</b>	<b>12,010</b>	<b>100%</b>

Female	April 2023		May 2023		June 2023		Quarterly Average	Quarterly %
	Race	Population	%	Population	%	Population		
Hispanic	668	45%	695	47%	668	45%	677	46%
Black	472	32%	470	32%	471	32%	471	32%
White	269	18%	258	17%	257	18%	261	18%
All Others	67	5%	57	4%	61	4%	62	4%
Chinese	7	0%	8	0%	6	1%	7	0%
Filipino	4	0%	5	0%	5	0%	5	0%
Pacific Islanders	2	0%	1	0%	1	0%	1	0%
Japanese	1	0%	0	0%	0	0%	0	0%
American Indian	0	0%	0	0%	0	0%	0	0%
<b>Total</b>	<b>1,490</b>	<b>100%</b>	<b>1,494</b>	<b>100%</b>	<b>1,469</b>	<b>100%</b>	<b>1,484</b>	<b>100%</b>

\*Statistical data are averages gathered from Custody Division Daily Briefing Report every Tuesday.

## INMATE POPULATION OFFENDER AGE GROUPS

The 26-34 year old cohort was the most frequently represented age group within the jail population this quarter, followed by the 45 & older.

Combined	April 2023		May 2023		June 2023		Quarterly Average	Quarterly %
Age Group	Population	%	Population	%	Population	%		
18 to 25	2,230	16%	2,186	16%	2,151	16%	2,189	16%
26 to 34	5,061	37%	4,854	36%	4,793	36%	4,903	36%
35 to 39	2,191	16%	2,154	16%	2,126	16%	2,157	16%
40 to 44	1,671	12%	1,616	12%	1,590	12%	1,625	12%
45 & Older	2,671	19%	2,619	20%	2,569	20%	2,620	20%
<b>Total</b>	<b>13,824</b>	<b>100%</b>	<b>13,429</b>	<b>100%</b>	<b>13,229</b>	<b>100%</b>	<b>13,494</b>	<b>100%</b>

Male	April 2023		May 2023		June 2023		Quarterly Average	Quarterly %
Age Group	Population	%	Population	%	Population	%		
18 to 25	2,017	16%	1,959	16%	1,933	16%	1,970	16%
26 to 34	4,450	36%	4,245	36%	4,204	36%	4,300	36%
35 to 39	1,924	16%	1,887	16%	1,856	16%	1,889	16%
40 to 44	1,491	12%	1,439	12%	1,415	12%	1,448	12%
45 & Older	2,452	20%	2,405	20%	2,352	20%	2,403	20%
<b>Total</b>	<b>12,334</b>	<b>100%</b>	<b>11,935</b>	<b>100%</b>	<b>11,760</b>	<b>100%</b>	<b>12,010</b>	<b>100%</b>

Female	April 2023		May 2023		June 2023		Quarterly Average	Quarterly %
Age Group	Population	%	Population	%	Population	%		
18 to 25	213	14%	227	15%	218	15%	219	15%
26 to 34	611	41%	609	41%	589	40%	603	41%
35 to 39	267	18%	267	18%	270	18%	268	18%
40 to 44	180	12%	177	12%	175	12%	177	12%
45 & Older	219	15%	214	14%	217	15%	217	14%
<b>Total</b>	<b>1,490</b>	<b>100%</b>	<b>1,494</b>	<b>100%</b>	<b>1,469</b>	<b>100%</b>	<b>1,484</b>	<b>100%</b>

\*Statistical data are averages gathered from Custody Division Daily Briefing Report every Tuesday.

## JAIL POPULATION BY SECURITY LEVEL

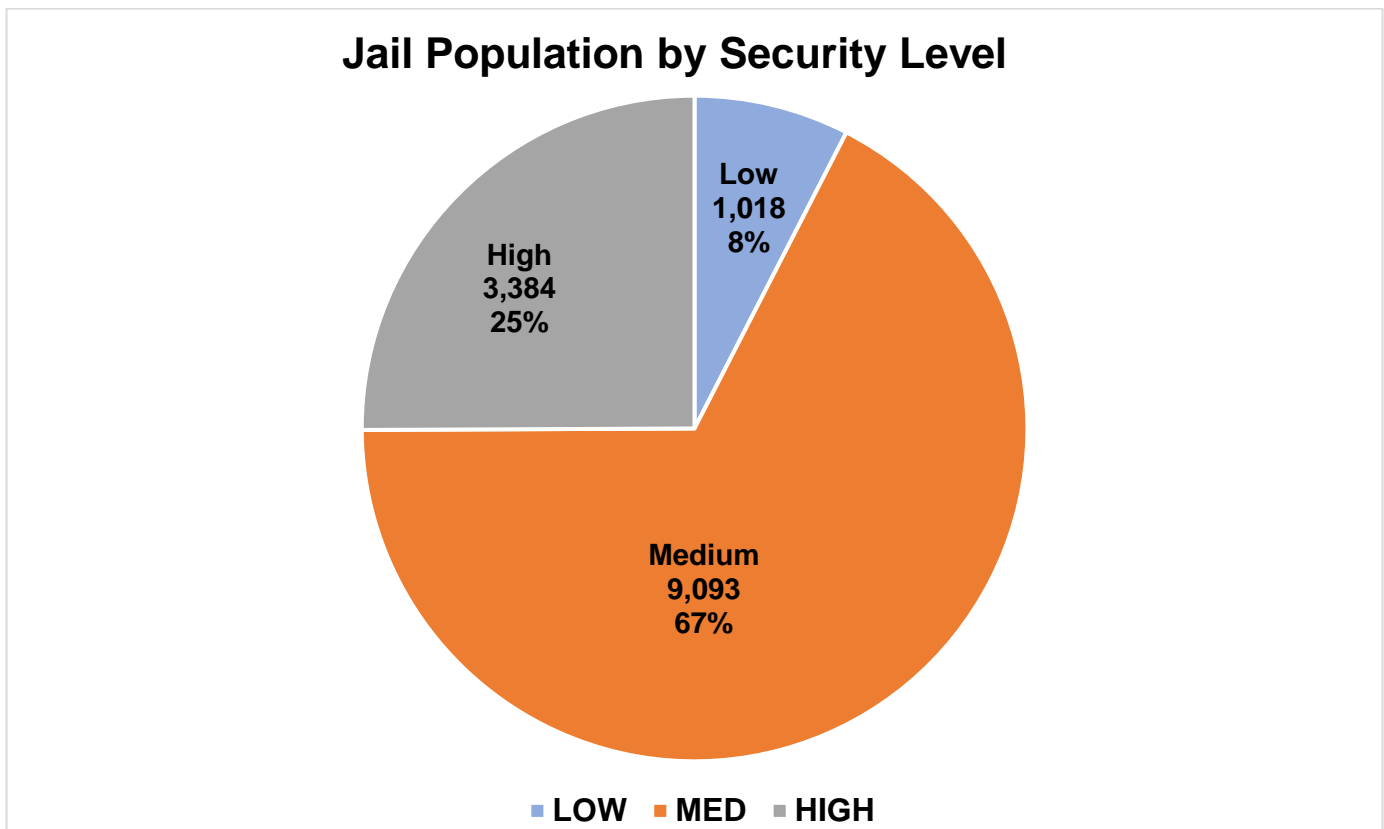
The Department utilizes the Northpointe Classification system to assign security levels to inmates. The security levels guide where an inmate will be housed based on their individual risk for in-custody misconduct. Lower security housing areas offer more programming and privileges to better prepare the inmates for release. Higher security housing is more restricted and therefore limited in what programs are offered, due to potential risk of serious misconduct and/or escape. All inmates are re-evaluated for reclassification of security level every 45 days.

<b>Jail Population by Security Level</b>				
<b>Month</b>	<b>Low</b>	<b>Medium</b>	<b>High</b>	<b>Total</b>
<b>April</b>	978	9,244	3,601	13,823
<b>May</b>	1,025	9,024	3,380	13,429
<b>June</b>	1,052	9,010	3,170	13,232
<b>Average</b>	<b>1,018</b>	<b>9,093</b>	<b>3,384</b>	<b>13,495</b>
<b>Percent</b>	<b>8%</b>	<b>67%</b>	<b>25%</b>	<b>100%</b>

*\*This chart only includes inmates housed in LASD Type II facilities, does not include inmates housed in alternative custody beds.*

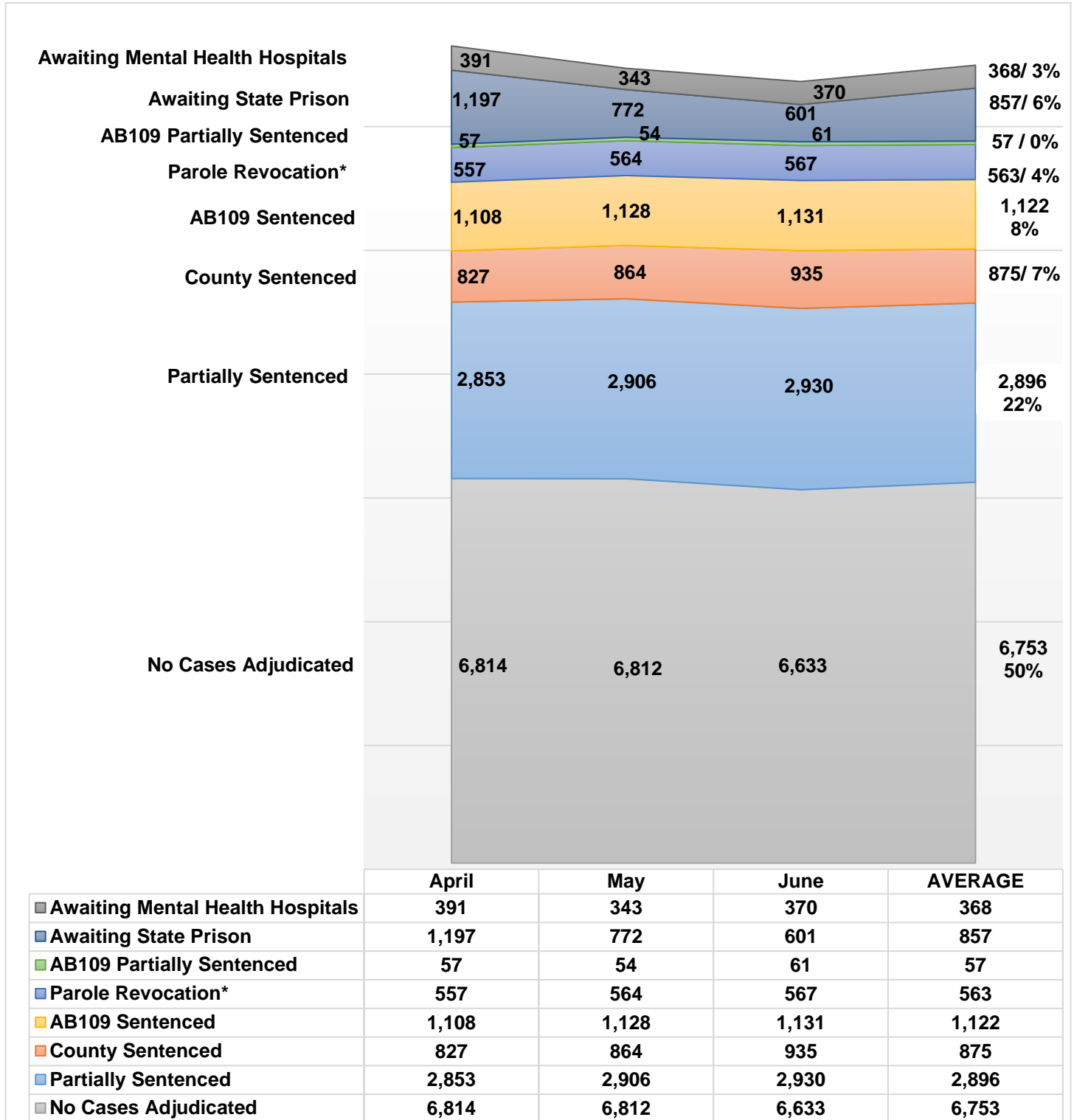
*\*\*Information contained is based on a snapshot of the daily inmate population purged every Tuesday.*

The pie graph below depicts the average number of inmates housed this quarter by security level. The percentage is calculated to the Facility ADIP for this quarter (13,495).



## INMATE POPULATION BREAKDOWN

The inmate population consists of various categories of inmates in broad groupings, including: no cases adjudicated, traditional county sentenced, AB109 sentenced, AB109 sentenced with additional charges, parole/revocation violators, and those awaiting transfer to state prison.



\*Parole Revocation includes PRCS Revocation 3455, Flash Incarceration 3454 and Inmates with a 3056 hold.

\*\*This report is a general overview of the inmate population. As it does not include all subgroups of the inmate population, it is not intended to be relied upon as a definitive representation of the entire inmate population.

## **INMATE POPULATION BREAKDOWN CONTINUED**

- **AWAITING STATE PRISON**

During this quarter, an average of 857 inmates were awaiting transfer to state prison, some while pending trial on other cases.

- **AB109 PAROLE AND PROBATION VIOLATORS**

An average of 563 AB109 inmates were in custody for violating their parole or probation.

- **AB109 SENTENCED**

An average of 1,122 inmates were in custody, sentenced under AB109.

- **TRADITIONAL COUNTY SENTENCED INMATE POPULATION**

The average daily count for the TCS population was 875, approximately seven percent (7%) of the inmate population.

- **NO CASES ADJUDICATED**

During this quarter, there were approximately 15,550 new bookings into County jail. Fifty percent (50%) of the average daily inmate population (13,488) was comprised of inmates who did not have their cases adjudicated. These include inmates who have an open case and have not been sentenced by the courts, along with court returnees. Court returnees are inmates returning from state prisons or state hospitals to either face new charges, re-litigate past crimes, follow up on competency reports or for civil matters (witness, child custody, etc.).

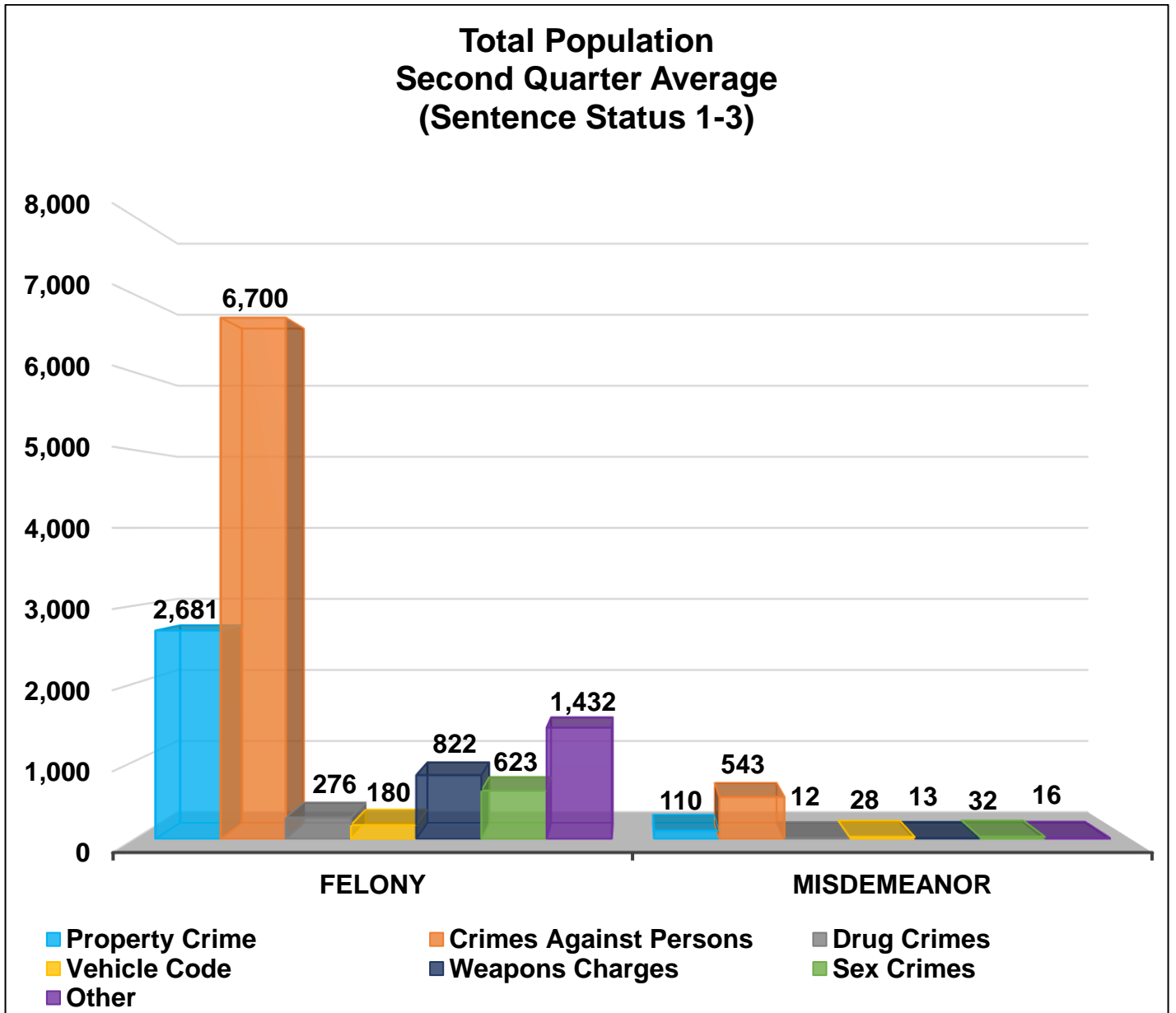
## CRIME CLASSIFICATION STATISTICS

The chart below provides an average breakdown for the entire inmate population, both sentenced and un-sentenced, by arrest category.

Total Population (Sentence Status 1-3)

Arrest Category	Property Crimes	Crimes Against Persons	Drug Crimes	Vehicle Codes	Weapons Charges	Sex Crimes	Other	Total	% of the Population
<b>Felony</b>	2,681	6,700	276	180	822	623	1,432	12,714	94%
<b>Misdemeanor</b>	110	543	12	28	13	32	16	754	6%
<b>Total</b>	2,791	7,243	288	208	835	655	1,448	13,468	100%

*\*Information contained is based on a snapshot of the daily inmate population every Tuesday.*





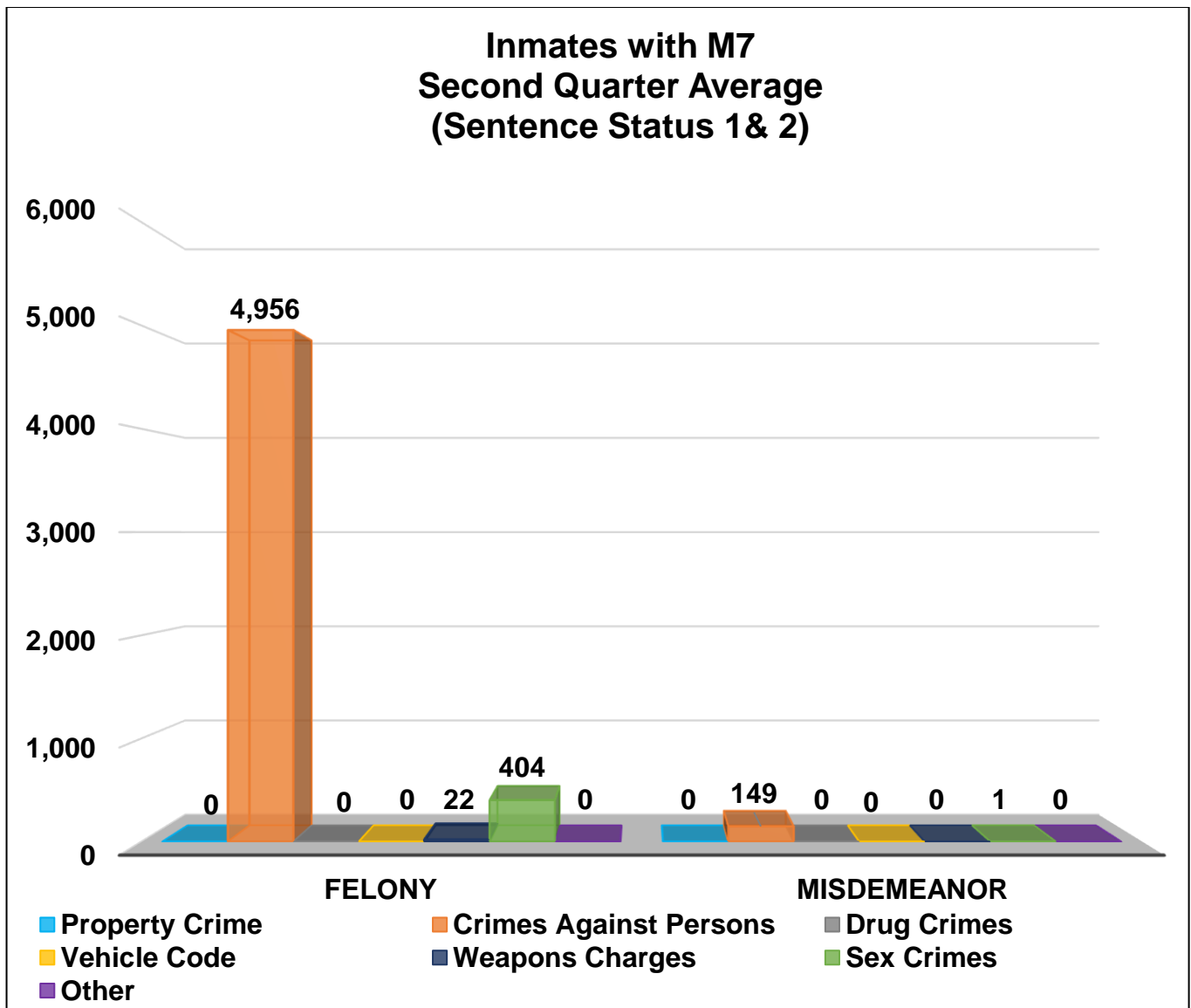
## INMATES WITH ASSAULTIVE/VIOLENT CHARGES (M7)

The chart below provides a breakdown for the inmate population with M7 charges, sentence status one and two, and by arrest category.

Inmates with Assaultive/Violent Charges (M7) (Sentence Status 1 and 2)

Arrest Category	Property Crimes	Crimes Against Persons	Drug Crimes	Vehicle Codes	Weapons Charges	Sex Crimes	Other	Total	% of the Sentence Status 1 and 2 Population
Felony	0	4,956	0	0	22	404	0	5,382	97%
Misdemeanor	0	149	0	0	0	1	0	150	3%
<b>Total</b>	0	5,105	0	0	22	405	0	5,532	100%

*\*Information contained is based on a snapshot of the daily inmate population every Tuesday.*

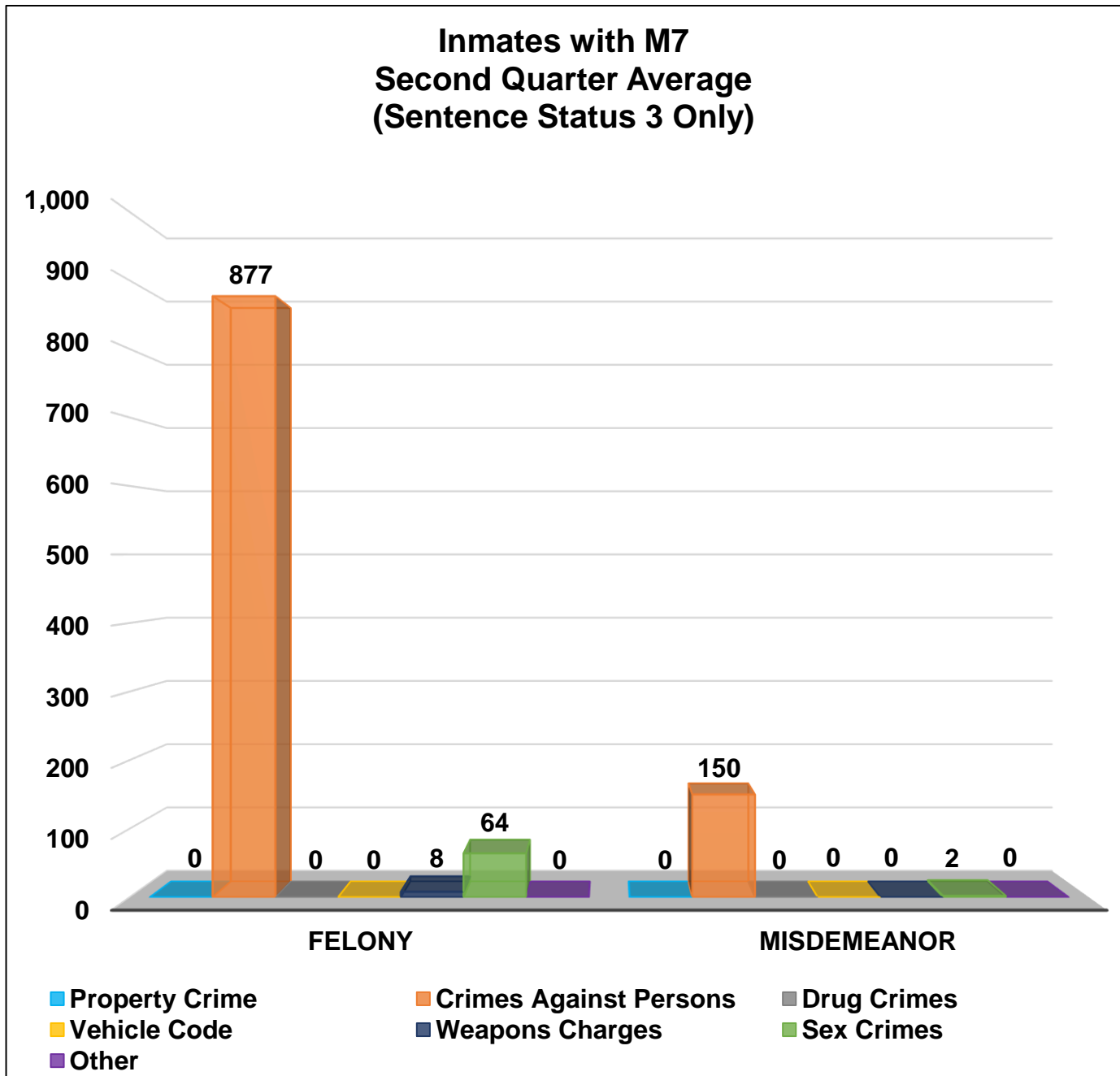


## INMATES WITH ASSAULTIVE/VIOLENT CHARGES (M7) CONTINUED

Inmates with Assaultive/Violent Charges (M7) (Sentence Status 3 Only)

Arrest Category	Property Crime	Crimes Against Persons	Drug Crimes	Vehicle Code	Weapons Charges	Sex Crimes	Other	Total	% of the Sentenced Population
Felony	0	877	0	0	8	64	0	949	86%
Misdemeanor	0	150	0	0	0	2	0	152	14%
<b>Total</b>	0	1,027	0	0	8	66	0	1,101	100%

*\*Information contained is based on a snapshot of the daily inmate population every Tuesday.*



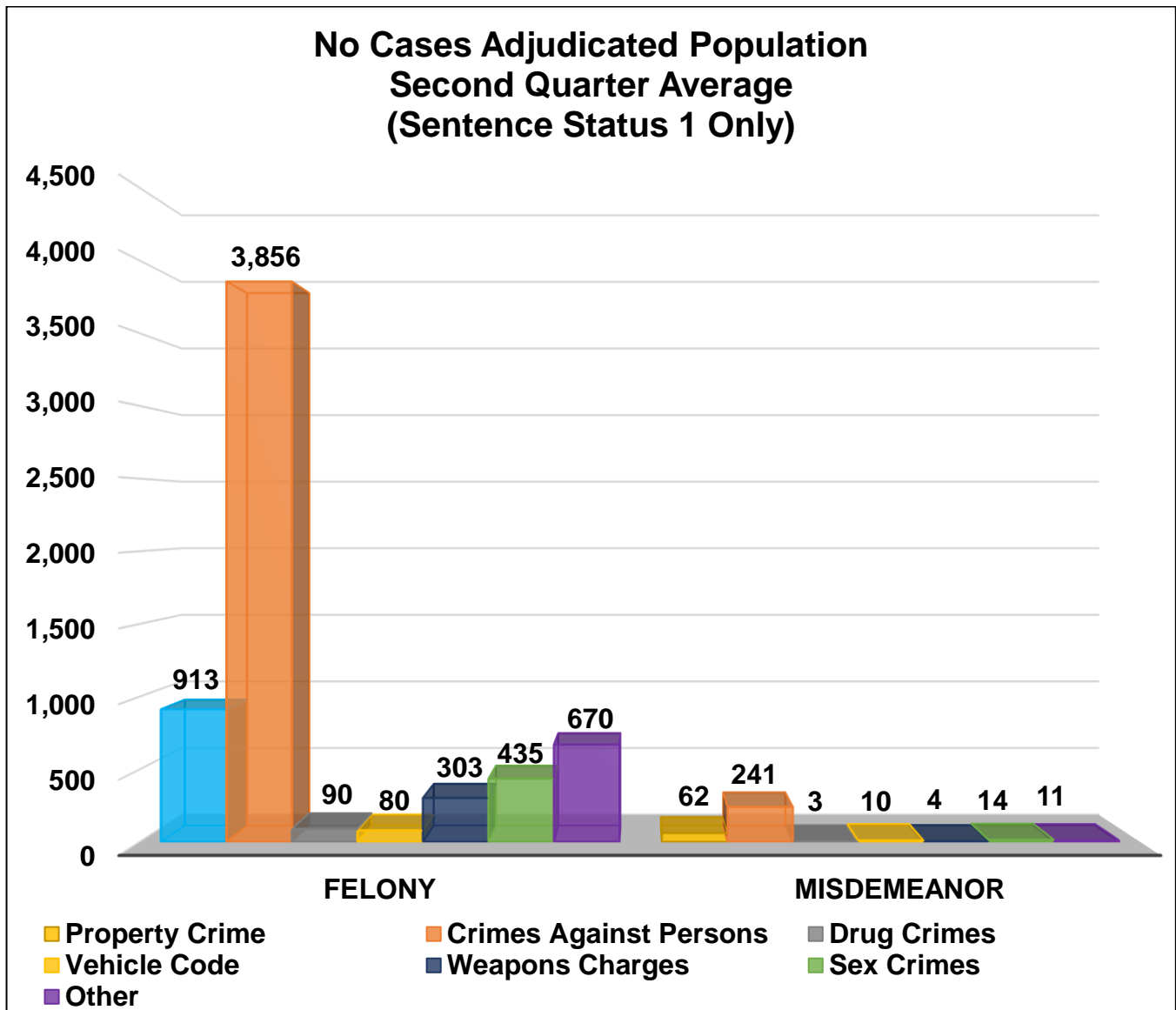
## No CASES ADJUDICATED

The chart below provides a breakdown for the inmate population with an open case and have not been sentenced by the courts, along with court returnees.

### No Cases Adjudicated (Sentence Status 1 only)

Arrest Category	Property Crime	Crimes Against Persons	Drug Crimes	Vehicle Code	Weapons Charges	Sex Crimes	Other	Total	% of the Sentence Status 1 Population
Felony	913	3,856	90	80	303	435	670	6,347	95%
Misdemeanor	62	241	3	10	4	14	11	345	5%
Total	975	4,097	93	90	307	449	681	6,692	100%

*\*Information contained is based on a snapshot of the daily inmate population every Tuesday.*



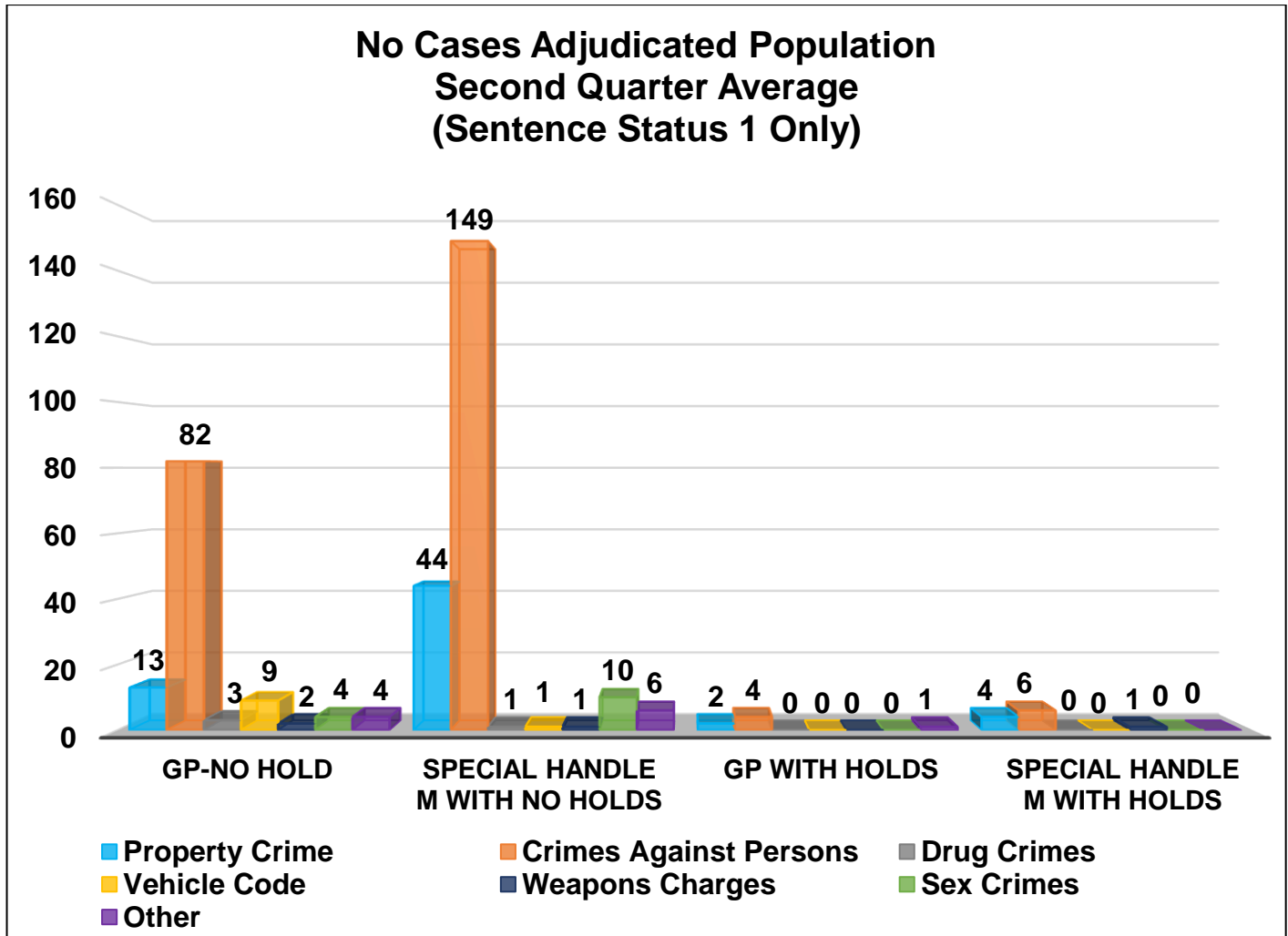
## No CASES ADJUDICATED MISDEMEANOR POPULATION

The chart below provides a breakdown for the inmate population with open cases and have not been sentenced by the courts, along with court returnees, who are incarcerated for a misdemeanor and have not yet been convicted. "Holds" indicates the inmates are being held on a matter pending from an outside agency.

No Cases Adjudicated Misdemeanor Population (Sentence Status 1 only)

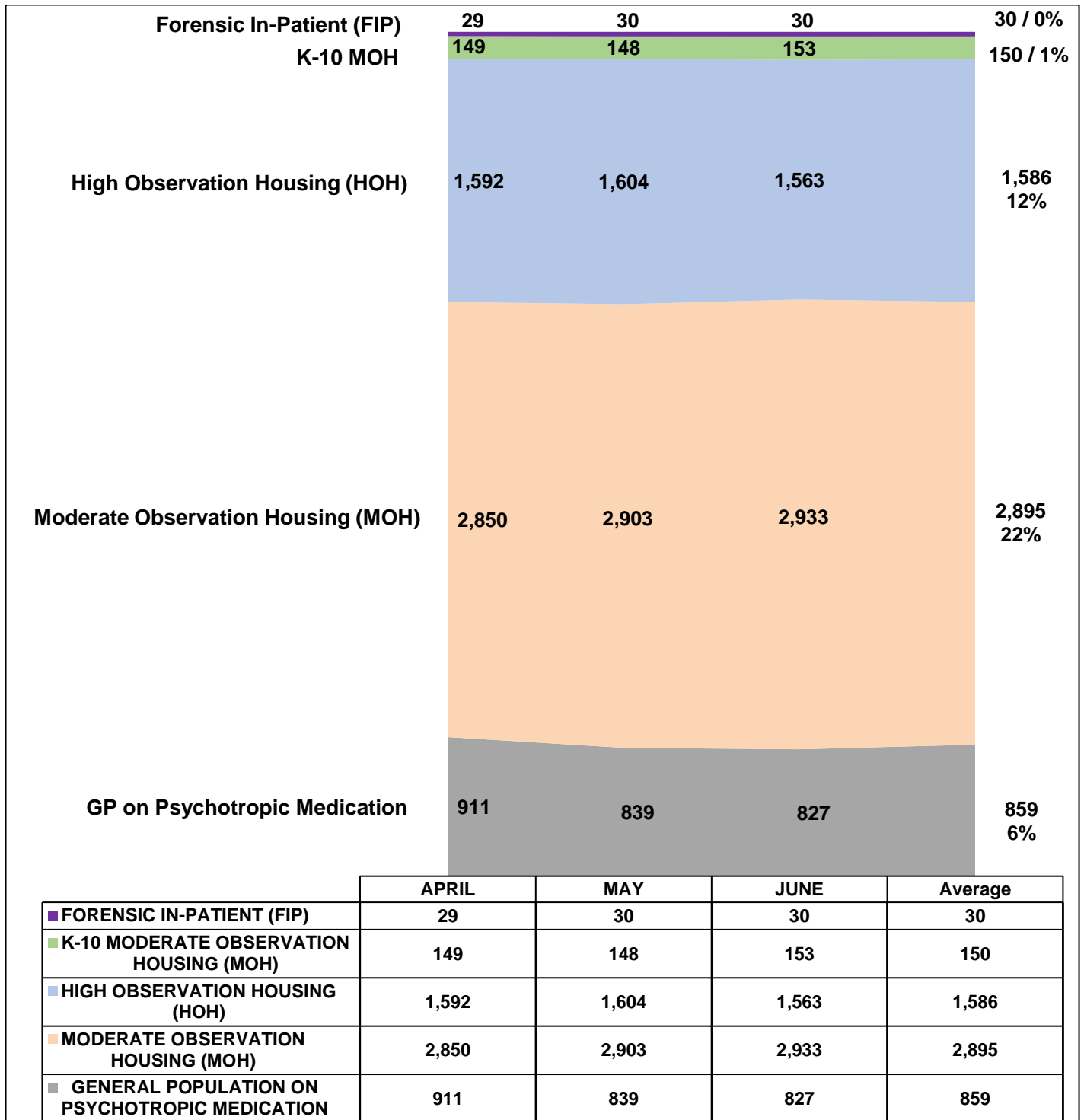
Arrest Category	Property Crimes	Crimes Against Persons	Drug Crimes	Vehicle Codes	Weapons Charges	Sex Crimes	Other	Total	% of the Sentence Status 1 Population
GP No Hold	13	82	3	9	2	4	4	117	34%
Special Handle M with No Holds	44	149	1	1	1	10	6	212	61%
GP with Holds	2	4	0	0	0	0	1	7	2%
Special Handle M with Holds	4	6	0	0	1	0	0	11	2%
<b>Total</b>	<b>63</b>	<b>241</b>	<b>4</b>	<b>10</b>	<b>4</b>	<b>14</b>	<b>11</b>	<b>347</b>	<b>100%</b>

*\*Information contained is based on a snapshot of the daily inmate population every Tuesday.*



## MENTAL HEALTH INMATE POPULATION

This quarter, the overall inmate population was 13,488, of which the mental health population averaged 5,520 and accounted for 41 percent. Inmates identified with mental health needs requiring specialized moderate or high observation housing account for 35 percent of the overall population. The remaining 6 percent have been treated and continue to receive psychotropic medication while housed in general population.



\*Information contained is based on a snapshot of the daily inmate population every Tuesday.

## MISDEMEANOR INCOMPETENT TO STAND TRIAL (MIST)

County jail houses inmates who are awaiting trial for misdemeanor charges who have been found to be incompetent to stand trial. This quarter, the average number of inmates on MIST is \*.

Misdemeanor Incompetent to Stand Trial (MIST)									
April			May			June			*Quarterly Average
*Male	Female	*Total	*Male	Female	*Total	*Male	Female	*Total	
--	33	--	--	39	--	--	39	--	--

*\*CHS was not tracking male MIST data for this quarter.  
Information contained is based on a snapshot of the daily inmate population every Tuesday.*

## AMERICANS WITH DISABILITIES ACT (ADA)

Americans with Disabilities Act housing is used to accommodate inmates with mobility limitations and/or physical disabilities. This quarter, the average number of inmates requiring ADA is 414 which is slightly lower than last quarter's 418 total.

Americans With Disabilities Act (ADA)				
Disability	April	May	June	Quarterly Average
Seeing Impaired	11	6	5	7
Hearing Impaired	13	12	14	13
Wheelchair	244	223	225	231
Mobility Impaired	158	162	170	163
<b>Monthly Total</b>	<b>426</b>	<b>403</b>	<b>414</b>	<b>414</b>

*Information contained is based on a snapshot of the daily inmate population every Tuesday.*

## MEDICAL HOUSING

Medical Outpatient/Specialty Housing (MOSH) is provided to inmates who require a level of medical treatment beyond that of stabilized medication distribution (pill call). The MOSH area in Men's Central Jail (MCJ) is also used to house inmates with mobility issues.

Additional Medical Housing				
Housing Area	April	May	June	Quarterly Average
Correctional Treatment Center (CTC)	107	100	93	100
Los Angeles County Medical Center (LCCMC)	30	14	16	20
MCJ Medical/Clinic*	374	355	363	364
<b>Monthly Total</b>	<b>511</b>	<b>469</b>	<b>472</b>	<b>484</b>

*Data are averages gathered from Facility Count Sheet every Tuesday. \*Includes some ADA housing.*

# **IN-CUSTODY PROGRAMS**

## LA COUNTY INMATE IN-CUSTODY PROGRAMS

The Los Angeles County jail offers several in-custody programs. They vary from in-custody work assignments, vocational job training, education, and life skill classes, as well as fire camp training and CDCR fire camp placement for AB109 inmates. Various programs awarded sentenced inmates additional time credits for their participation pursuant to the California Penal Code:

### CREDIT EARNINGS

Program	Penal Code	Credit Earned	Type of Inmate
<b>Sentenced GT/WT</b>	4019 PC	Day-for-Day (1:1)	All Sentenced Inmates
<b>Conservation</b>	4019.1 PC	One and one half-for One (1.5:1)	All Sentenced Inmates
<b>Fire Camp</b>	4019.2 PC	Two-for-One (2:1)	AB109 Sentenced Inmates
<b>Milestone*</b>	4019.4 PC	Up to 6 weeks per year	All Sentenced Inmates

*\*Milestone credits are retroactively applied for unsentenced inmates.*

### CONSERVATION WORK PROGRAM

The Conservation Work Program (CWP) requires inmates to complete their adjusted sentence while working in various job classifications, giving them the skills and work discipline necessary to increase their chances of success once released. Effective January 2015, all sentenced offenders, including TCS inmates are eligible to receive credits pursuant to Penal Code Section 4019.1. For this quarter, approximately 1,227 offenders (9% of the population) participated in CWP.

<b>CONSERVATION WORK PROGRAM (CWP)</b>				
Inmate Type	April	May	June	Quarterly Average
Participating Inmates	1,144	1,234	1,304	<b>1,227</b>

*\* Information contained is based on a snapshot of the daily inmate population every Tuesday.*

### EDUCATION BASED INCARCERATION PROGRAMS

The Education Based Incarceration (EBI) Program uses traditional and nontraditional education which is designed to reduce incarceration by increasing the educational, civic, social, economic, and life skills of its participants. Offenders who are sentenced are eligible to receive credits pursuant to Penal Code 4019.4. For this quarter, 43 milestone credits were awarded.

*The EBI school program continue to be limited due to COVID-19.*



## **FIRE CAMP TRAINING PROGRAM**

Fire Camp Training and California Institute for Women (CIW) training are aligned under the CWP. This program is the first step of training before an inmate may participate in a state-facilitated Fire Camp program overseen by the CDCR. Offenders who are sentenced under AB109 are eligible to receive credits pursuant to Penal Code 4019.1. The average number of inmates enrolled in the Fire Camp training program for this quarter was 36.

<b>FIRE CAMP TRAINING CAMP</b>				
<b>Housing Type</b>	<b>April</b>	<b>May</b>	<b>June</b>	<b>Quarterly Average</b>
PDC Fire Camp Training (Men)	34	30	43	<b>36</b>
CIW Fire Camp Training (Women)	0	0	1	<b>0</b>
<b>Monthly Total</b>	<b>34</b>	<b>30</b>	<b>44</b>	<b>36</b>

## **CALIFORNIA DEPARTMENT OF CORRECTIONS AND REHABILITATION** **FIRE CAMP PROGRAM**

Once an inmate passes all necessary requirements in the Fire Camp training program located at Pitchess Detention Center (PDC) East facility, they are transferred to one of five state-contracted fire camp sites where they will serve the remainder of their adjusted sentence. Offenders who are sentenced under AB109 are eligible to receive credits pursuant to Penal Code 4019.2. The average number of inmates assigned to CDCR Fire Camp for this quarter was 3.

<b>CDCR FIRE CAMP</b>				
<b>Fire Camp Locations</b>	<b>April</b>	<b>May</b>	<b>June</b>	<b>Quarterly Average</b>
Acton Fire Camp	1	1	1	<b>1</b>
Francisquito Fire Camp	1	1	1	<b>1</b>
Holton Fire Camp	1	1	1	<b>1</b>
Julius Klein Fire Camp	1	0	0	<b>0</b>
Malibu Women's Fire Camp	0	0	0	<b>0</b>
<b>Monthly Total</b>	<b>4</b>	<b>3</b>	<b>3</b>	<b>3</b>

## **IN-CUSTODY SUBSTANCE TREATMENT AND REENTRY TRANSITION**

The jail-based Substance Treatment and Reentry Transition (START) treatment services provides substance use disorder (SUD) treatment services at the different jail facilities. Treatment services include screening, clinical assessment, group and individual counseling, case management services, medication-assisted treatment, re-entry planning and care coordination.

<b>In-Custody START (CRDF)</b>	<b>April</b>	<b>May</b>	<b>June</b>	<b>Quarterly Average</b>
Enrolled	97	93	87	<b>92</b>
Completed	16	18	10	<b>15</b>
<b>In-Custody START (MCJ)</b>	<b>April</b>	<b>May</b>	<b>June</b>	<b>Quarterly Average</b>
Enrolled	145	130	112	<b>129</b>
Completed	9	21	9	<b>13</b>
<b>In-Custody START (PDC)</b>	<b>April</b>	<b>May</b>	<b>June</b>	<b>Quarterly Average</b>
Enrolled	84	95	98	<b>92</b>
Completed	10	23	23	<b>19</b>
<b>In-Custody START (TTCF)</b>	<b>April</b>	<b>May</b>	<b>June</b>	<b>Quarterly Average</b>
Enrolled	62	65	52	<b>60</b>
Completed	8	6	4	<b>6</b>

# **ALTERNATIVES TO CUSTODY PROGRAMS**

## **ALTERNATIVES TO CUSTODY PROGRAMS**

The Community Transition Unit (CTU), the Community Based Alternatives to Custody (CBAC) unit, and the Compliance Team work together by utilizing a variety of alternatives to custody programming options in an effort to enhance an inmate's chances of success upon release. These programs are conducted in collaboration with local agencies including community and faith based organizations, Department of Mental Health (DMH), Department of Public Health (DPH) and other organizations. It is the Department's goal to program inmates from intake through re-entry into the community. With this approach, the Department hopes to increase public safety and reduce the rate of recidivism.

Supported by release planning overseen by the CTU, and in partnership with contracted services, inmates are provided re-entry assistance through linkages to services that are initiated while they are in-custody and continued upon release. Through the Alternatives to Custody (ATC) programs, qualifying inmates are afforded the opportunity to complete the remaining portion of their sentence in a community treatment program. Inmates who do not qualify for ATC due to security or other reasons are referred to community providers for re-entry assistance.

The ATC programs include:

### **SUBSTANCE TREATMENT AND REENTRY TRANSITION PROGRAM**

The Substance Treatment and Reentry Transition (START) program is a DPH and Substance Abuse Prevention Control (SAPC) funded program that places eligible male and female inmates into residential Substance Use Disorder (SUD) treatment programs on electronic Global Positioning System monitoring as an ATC program.

### **FEMALE PROGRAMS**

The female programs are funded through community grants. They work directly with various residential programs approved by the Department, but not affiliated with the START program, and offer treatment bed for inmates under the ATC program. Several programs cater to specific clientele who fit a specified demographic in regards to age and gender.

### **VETERAN'S ADMINISTRATION**

The Veteran's Administration (VA) funds SUD residential treatment under the ATC program for inmates who are confirmed to be a veteran entitled to VA benefits. The treatment programs are approved by the VA and are vetted by personnel from PMB/CTU.

<b>Program Quarterly Statistics</b>	<b>Enrolled</b>	<b>Completed</b>	<b>Returned to Custody</b>	<b>Absconded</b>
START	22	12	2	2
Female Programs	0	0	0	0
Veterans	0	0	0	0

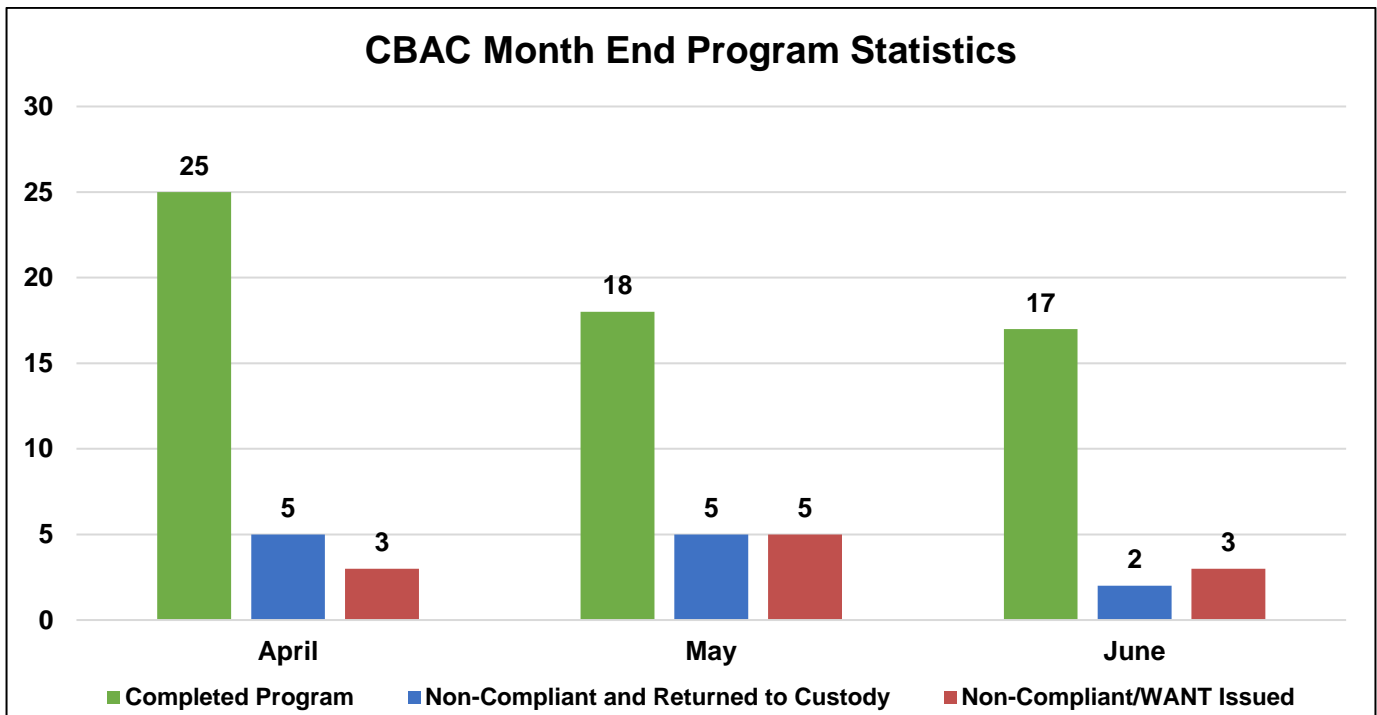
*\*Referrals and placements to the START community program are on hold pending execution of a new memorandum of agreement.*

## COMMUNITY BASED ALTERNATIVES TO CUSTODY

The Population Management Bureau’s (PMB) Community Based Alternatives to Custody (CBAC) unit identifies qualified, low risk, sentenced offenders within the jail population to finish their remaining sentence in an out-of-custody alternative environment. Although these individuals are outside of traditional custody, they are still under the jurisdiction of the Department.

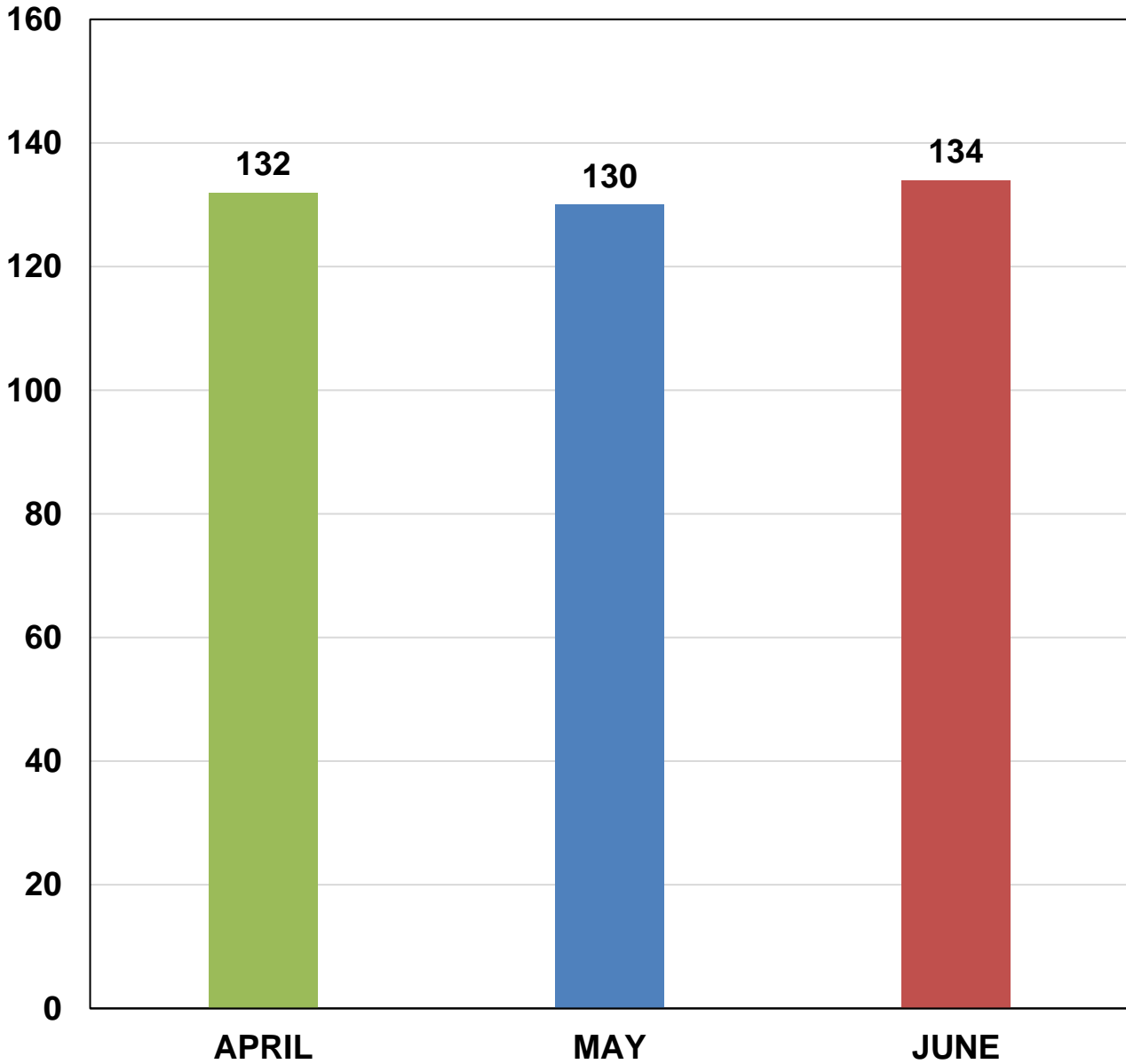
CBAC Monthly Placement									
Program	April			May			June		
	Male	Female	Total	Male	Female	Total	Male	Female	Total
Electronic Monitoring Program	5	2	7	9	1	10	11	2	13
Weekender Work Program	6	2	8	10	2	12	12	0	12
Work Release Program	11	2	13	19	5	24	15	5	20
<b>Monthly Total</b>	<b>22</b>	<b>6</b>	<b>28</b>	<b>38</b>	<b>8</b>	<b>46</b>	<b>38</b>	<b>7</b>	<b>45</b>

The graph below depicts the total number of offenders who successfully completed the remainder of their sentence on a CBAC program. It shows the number of offenders who failed to complete the program, and with the efforts of the PMB Compliance Unit, were returned back to finish their sentence. It also shows those who failed to complete the program and were not returned back to custody.



**LA COUNTY ALTERNATIVES TO CUSTODY INMATE POPULATION**

**Second Quarter 2023  
Los Angeles County Alternatives to Custody Inmate Count**



<b>2023 Quarterly ATC Average Daily Inmate Population (ADIP)*</b>
132

*\*Includes Community Based Alternatives to Custody (CBAC), Fire Camp and inmate station workers.*

# **RE-ENTRY ASSISTANCE**

## COMMUNITY RE-ENTRY AND RESOURCE CENTER

The information below represents recently released inmates and inquiries and/or contacts made by the general public who have been assisted with services at the Community Re-entry and Resource Center (CRRC) for the second quarter of 2023.

Inquiry Demographic Population	April	May	June	Total	Average
General Release	432	400	545	<b>1,377</b>	<b>459</b>
General Public	34	45	32	<b>111</b>	<b>37</b>
Alternatives to Custody Program	0	0	0	<b>0</b>	<b>0</b>
Coordinated Release	111	178	119	<b>408</b>	<b>136</b>
Work Release	0	0	0	<b>0</b>	<b>0</b>
Phone Referral	0	0	0	<b>0</b>	<b>0</b>
<b>Monthly Total</b>	<b>577</b>	<b>623</b>	<b>696</b>	<b>1,896</b>	<b>632</b>

Inquiry Demographic Gender	April	May	June	Total	Average
Male	380	322	487	<b>1,189</b>	<b>396</b>
Female	216	320	229	<b>765</b>	<b>255</b>
<b>Monthly Total</b>	<b>596</b>	<b>642</b>	<b>716</b>	<b>1,954</b>	<b>651</b>

Community Transition Unit (CTU) personnel visit the Inmate Reception Center release area to educate and remind inmates waiting to go home about services available at the CRRC. Walks of the release area are performed every 90 minutes.

	April	May	June	Total	Average
Number of 90 Minute Contact Walks	95	104	105	<b>304</b>	<b>101</b>
Number of Inmates Contacted	973	999	1,094	<b>3,066</b>	<b>1,022</b>
Number of Flyers Distributed	973	999	1,098	<b>3,070</b>	<b>1,023</b>

## CTU COORDINATED RELEASES TO VARIOUS PROGRAMS

The final 90 days leading to an inmate's release from custody are the most critical in ensuring a successful transition from custody to Community Based Organization (CBO) treatment centers. During the time leading up to their release, inmates are interviewed several times by the CBO staff and members of the CTU to ensure that they are matched up with a suitable treatment provider.

The coordinated release process helps to create a trust between law enforcement, inmate participants and the CBOs. The CTU's goal is to provide a successful recovery and re-entry into the community and to ultimately decrease recidivism.

	April	May	June	Total	Average
Coordinated Release	92	105	103	<b>300</b>	<b>100</b>



## CTU VITAL RECORDS

Through the Vital Records Program, Department staff members have been deputized by the County Registrar-Recorder to facilitate birth certificate applications for inmates born in Los Angeles County who have requested a certified copy. The fee of \$32 for certified copies of birth certificates is funded by the Inmate Welfare Fund.

All inmates in custody may apply for a replacement California Identification Card. The issued IDs are provided to the inmates upon their release. The inmates must still report to the California Department of Motor Vehicles (DMV) to obtain a driver's license following their release.

Records Processed	April	May	June	Quarterly Total	Quarterly Average
DMV - California Identification Card	161	145	99	<b>405</b>	<b>135</b>
Records – Birth Certificate	155	218	155	<b>528</b>	<b>176</b>
<b>Total</b>	<b>316</b>	<b>363</b>	<b>254</b>	<b>933</b>	<b>311</b>

Records Issued	April	May	June	Quarterly Total	Quarterly Average
DMV - California Identification Card	47	146	23	<b>216</b>	<b>72</b>
Records – Birth Certificate	201	140	53	<b>394</b>	<b>131</b>
<b>Total</b>	<b>248</b>	<b>286</b>	<b>76</b>	<b>610</b>	<b>203</b>