



CUSTODY DIVISION QUARTERLY REPORT

April - June 2017

Los Angeles County Sheriff's Department

Revised on February 08, 2018

Jim McDonnell, Sheriff

TABLE OF CONTENTS

Executive Summary.....	3
1. Population Trends.....	5
LA County Inmate Population Graphs	
Population Overview	
Yearly ADIP Trend	
Arrests, Bookings and Releases	
Release Practices	
Homeless and Veteran	
AB109 Split and Non-Split Sentences	
2. Facilities Overview.....	13
Rated Capacities - Board of State and Community Corrections	
Jail Housing Facilities	
Men's Central Jail	
Twin Towers Correctional Facility	
Century Regional Detention Center	
Pitchess Detention Center – East	
Pitchess Detention Center – North	
Pitchess Detention Center – South	
North County Correctional Facility	
3. Population Overview.....	20
Inmate Population Demographics	
Inmate Population Offender Age Groups	
Classification and Re-Classification	
Re-classification Statistics	
Inmate Population Breakdown	
Crime Classification Statistics	
Inmates with M7	
Pre-Trial Population	
Pre-Trial Misdemeanor Population	
Pre-Trial Bail Holds	
Mental Health Inmate Population	
Misdemeanor Incompetent to Stand Trial (MIST)	
Americans with Disabilities Act (ADA)	
Medical Housing	
4. In-Custody Programs.....	34
Credit Earnings	
Conservation Work Program (CWP)	
Fire Camp Training Program	
CDCR Fire Camp Program	
Education Based Incarceration Program (EBI)	
Back on Track (BOT)	
In-Custody S.T.A.R.T Program	
Program Credit Earning Chart	

5. Alternatives to Custody Programs.....39
 Community Transition Unit (CTU)
 Substance Abuse Treatment and Reentry Transition (S.T.A.R.T)
 Tarzana Treatment Center DMH/SUD Program
 Mental Health Diversion – Normandie Village/Gateway
 Community Based Alternatives to Custody (CBAC)

6. Re-Entry Assistance.....43
 Affordable Care Act (ACA)
 Community Re-Entry and Resource Center (CRRC)
 CTU Coordinated Releases to Various Programs
 CTU Vital Records

EXECUTIVE SUMMARY

The Los Angeles County Sheriff's Department (LASD) is committed to maintaining a secure and constitutional jail system. As part of this effort, a periodic report is essential to better understand and quantify population trends. This ***Custody Division Quarterly Report*** reports data collected during the Second Quarter of 2017, and is produced by the Population Management Bureau (PMB) Analysis Unit.

The average daily inmate population (ADIP) during the second quarter of 2017 was 17,518. This number includes approximately 449 inmates participating in community-based alternatives to custody programs. This is slightly more than the first quarter of 2017 ADIP average of 17,129, including approximately 491 who participated in the community-based alternative to custody programs. During the second quarter of 2016, the ADIP was 17,382, including 703 inmates participating in community-based alternatives to custody programs.

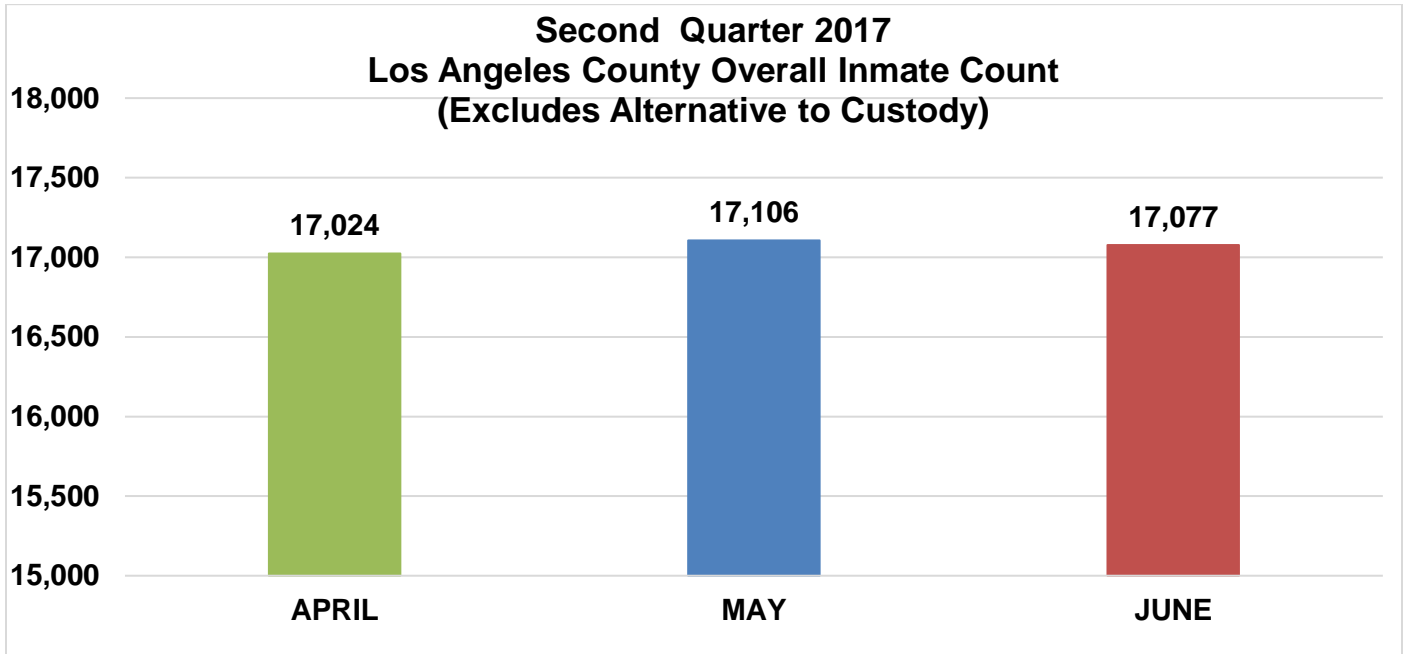
Conditions of over-crowding remained this quarter and necessitated the continued use of percentage release to manage the inmate population. During the first half of this quarter, inmates serving traditional county sentences completed 30 percent of their court ordered sentences. In May, the percentage was lowered to 10 percent. Inmates who were serving sentences for designated serious and/or assaultive offences (M7 charges) and those sentenced under 1170 PC (AB109) continued to serve 100 percent of their sentences, minus any time credits earned. The release percentage for the same time period in 2016 was 70 percent for males and 50 percent for females. For further information regarding this quarter's percentage release criteria see page 10 of this report.

The mental health population increased slightly to 4,537 (from 4,339 last quarter) and comprised 26 percent of the total inmate population. During the second quarter of 2016, the mental health population was 4,160 and comprised 25 percent of the total inmate population. The continuing increase in the mental health population has necessitated the conversion of several general population housing units into mental health housing. In the third quarter of 2016, one dorm at Pitchess Detention Center North (North) was converted to moderate observation mental health housing (MOH). This quarter, clinical staffing levels were increased at North and one additional MOH unit was opened. This increased the total MOH capacity at North facility to 160 inmates. It is anticipated that two additional dorms will be converted to MOH housing during the third quarter of this year and that the total MOH capacity at North facility will increase to 320 inmates.

The Traditional County Sentenced (TCS) population this quarter was approximately 1,801, and the number of inmates sentenced under 1170 PC was approximately 3,144. These numbers remain consistent with last quarter's totals. However, with the decrease in the TCS release percentage, fewer inmates convicted of lower level offenses (those traditionally eligible for alternatives to custody programs such as Work Release) will remain in custody for any significant period of time post-conviction. This will likely result in a reduction in the number of inmates enrolled in alternatives to custody programs in the coming months.

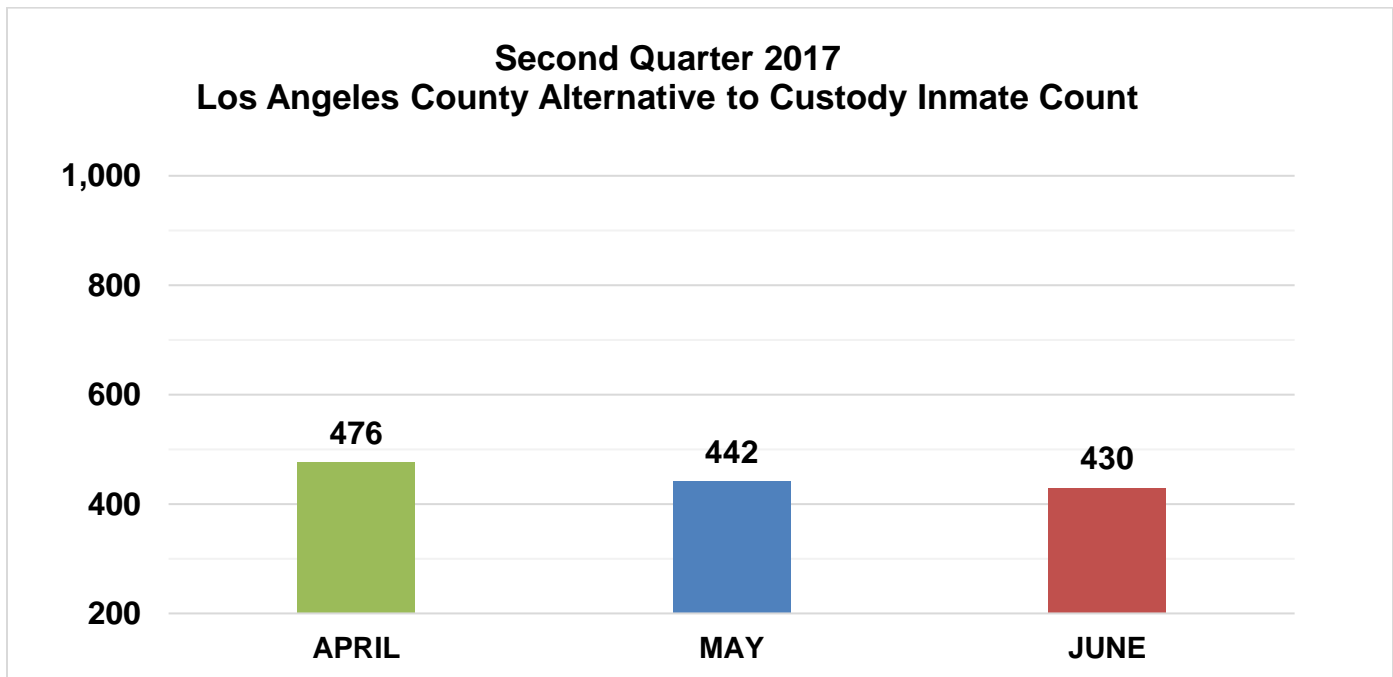
POPULATION TRENDS

LA COUNTY INMATE POPULATION



2017 Quarterly Overall Division ADIP
17,069

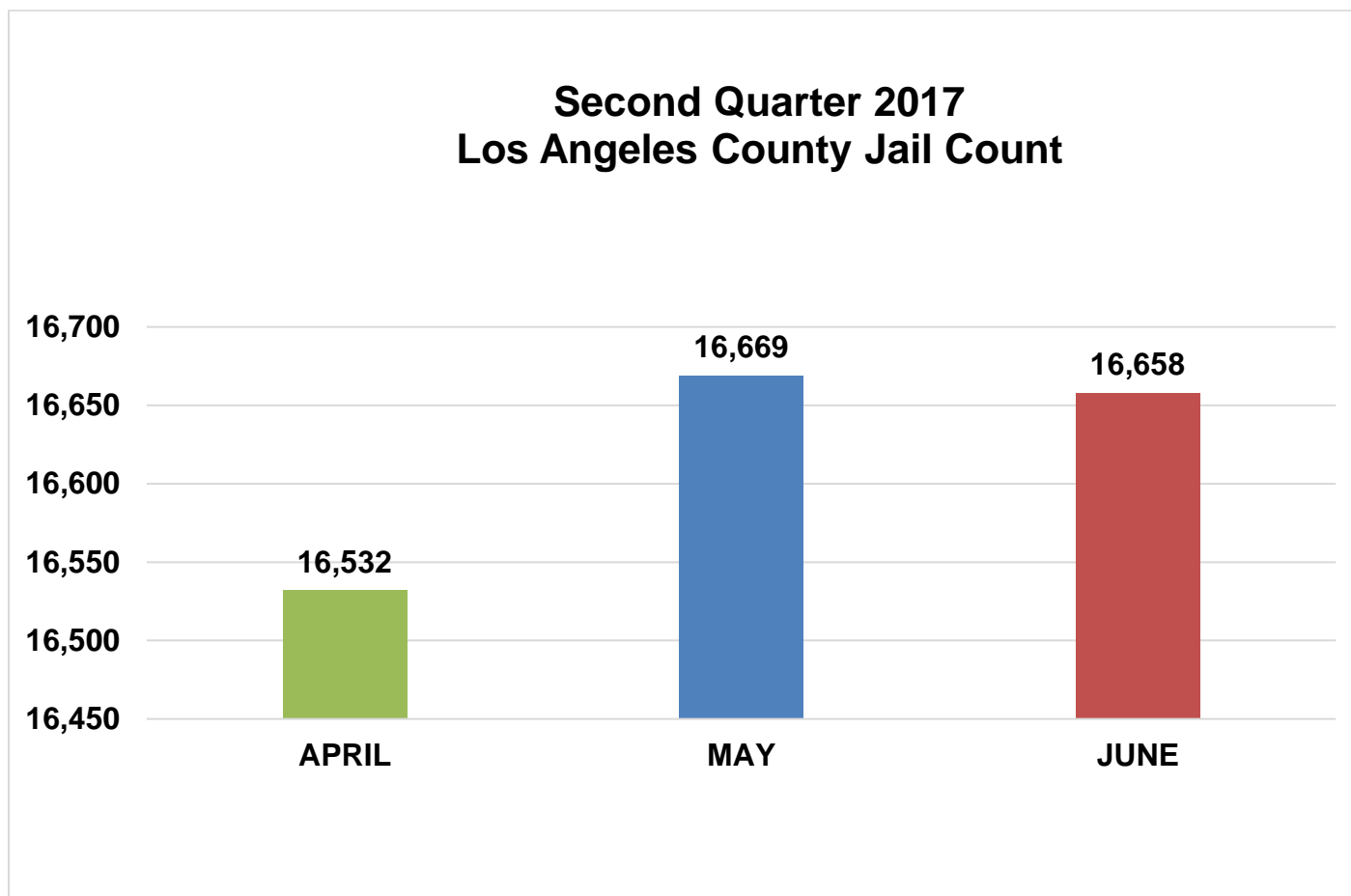
Quarterly Division ADIP will differ from Quarterly Facility ADIP due to the inclusion of Inmates processing into IRC



2017 Quarterly ATC ADIP
449

POPULATION OVERVIEW

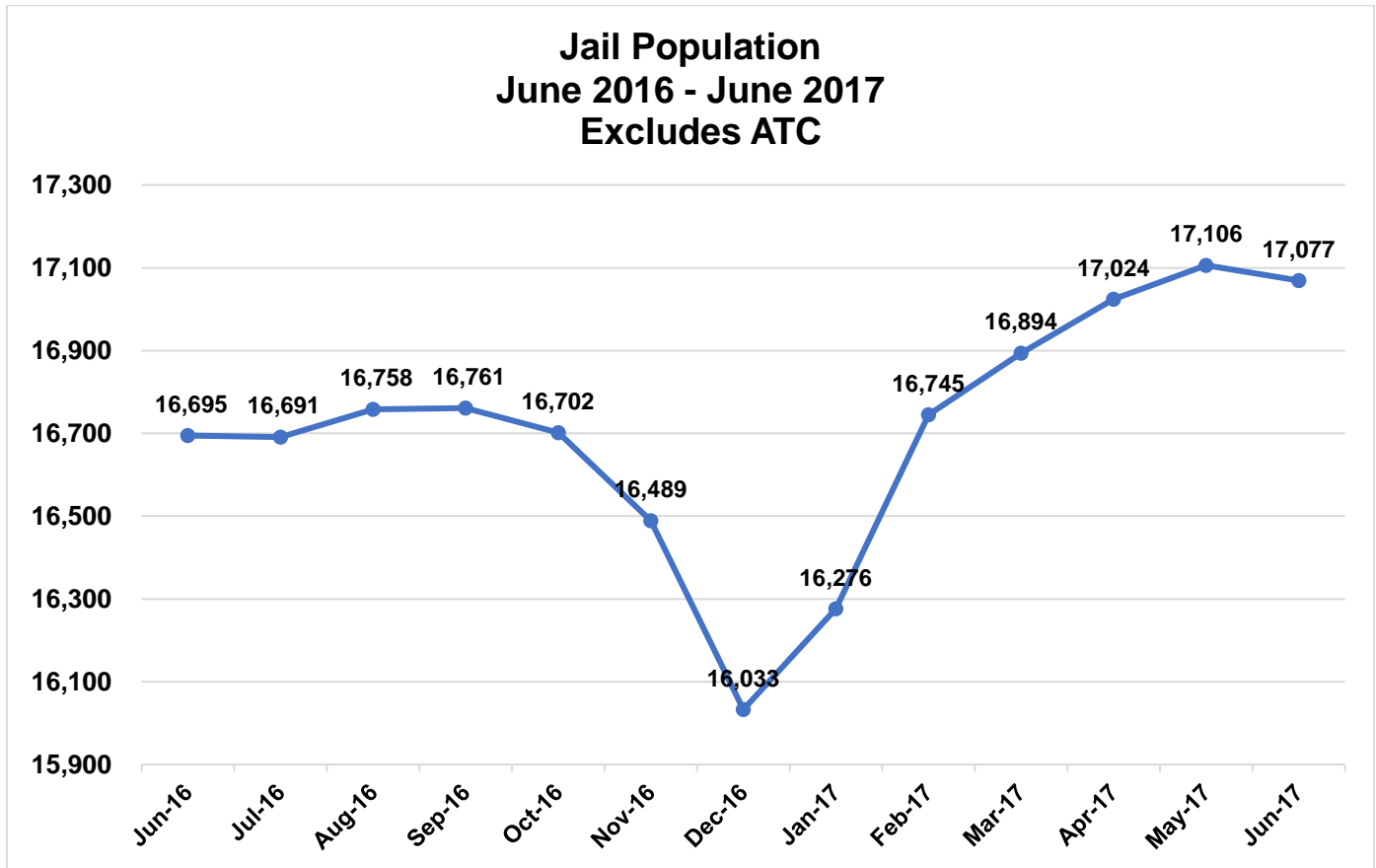
The inmate population within the County jail system had a slight increase for this second quarter of 2017.



2017 Quarterly Custody Bed ADIP
16,620

Facility Jail Count reflects all inmates housed in a LA County jail bed for the quarter. Excludes ATC and IRC.

Yearly ADIP Trend



Seven Year ADIP Comparison		
Year	ADIP	Notes
2011	15,014	(Oct - AB109 enacted)
2012	18,043	
2013	18,687	
2014	18,680	(Nov - Prop 47)
2015	17,049	
2016	16,613	
2017*	16,852	(Data collected through June 2017)

SECOND QUARTER 2017 - ARREST AND BOOKING STATS

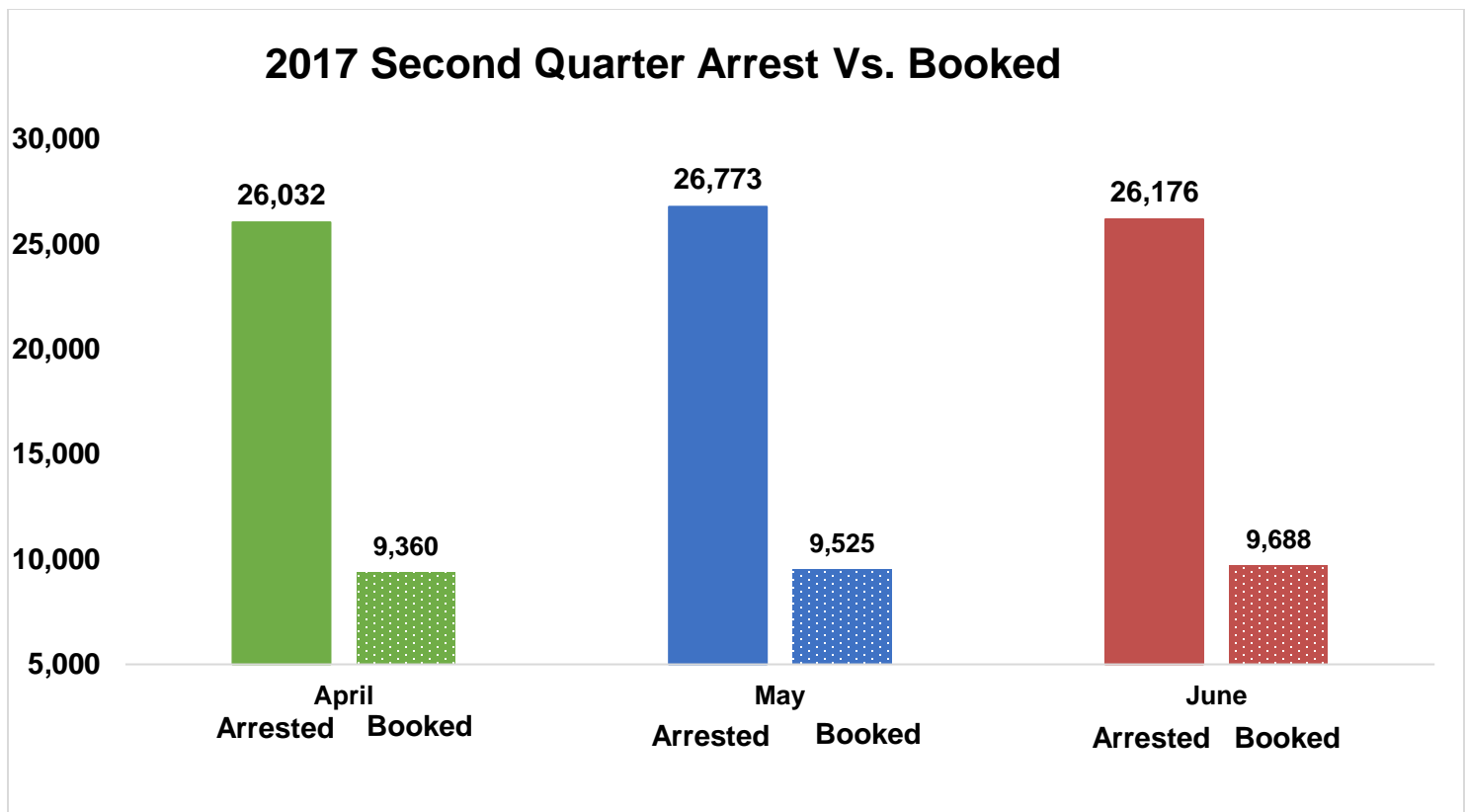
Arrest activity increased by 5% over last quarter. The number of inmates booked into the LA County jail this quarter was increased by 6% over last quarter's number of inmates booked into custody (26,919).

	April		May		June		Quarterly Total	Quarterly Average	Quarterly %
	Monthly Total	%	Monthly Total	%	Monthly Total	%			
Felony	9,392	36%	9,615	36%	9,372	36%	28,379	9,460	36%
Misdemeanor	15,458	59%	15,918	59%	15,684	60%	47,060	15,687	60%
Juvenile - non criminal	67	0%	67	0%	45	0%	179	60	0%
Other	1,115	4%	1,173	4%	1,075	4%	3,363	1,121	4%
Total Arrested	26,032		26,773		26,176		78,981	26,327	
Total Booked into LA County	9,360	36%	9,525	36%	9,688	37%	28,573	9,524	36%

Previously, data was generated from the Custody Inmate Portal (CIP) to determine how many inmates were booked and arrested, which only used the first charge (excluding all other charges) to determine the charge level. Beginning this year, we query and categorize all charges by the highest charge level to provide more accurate data.

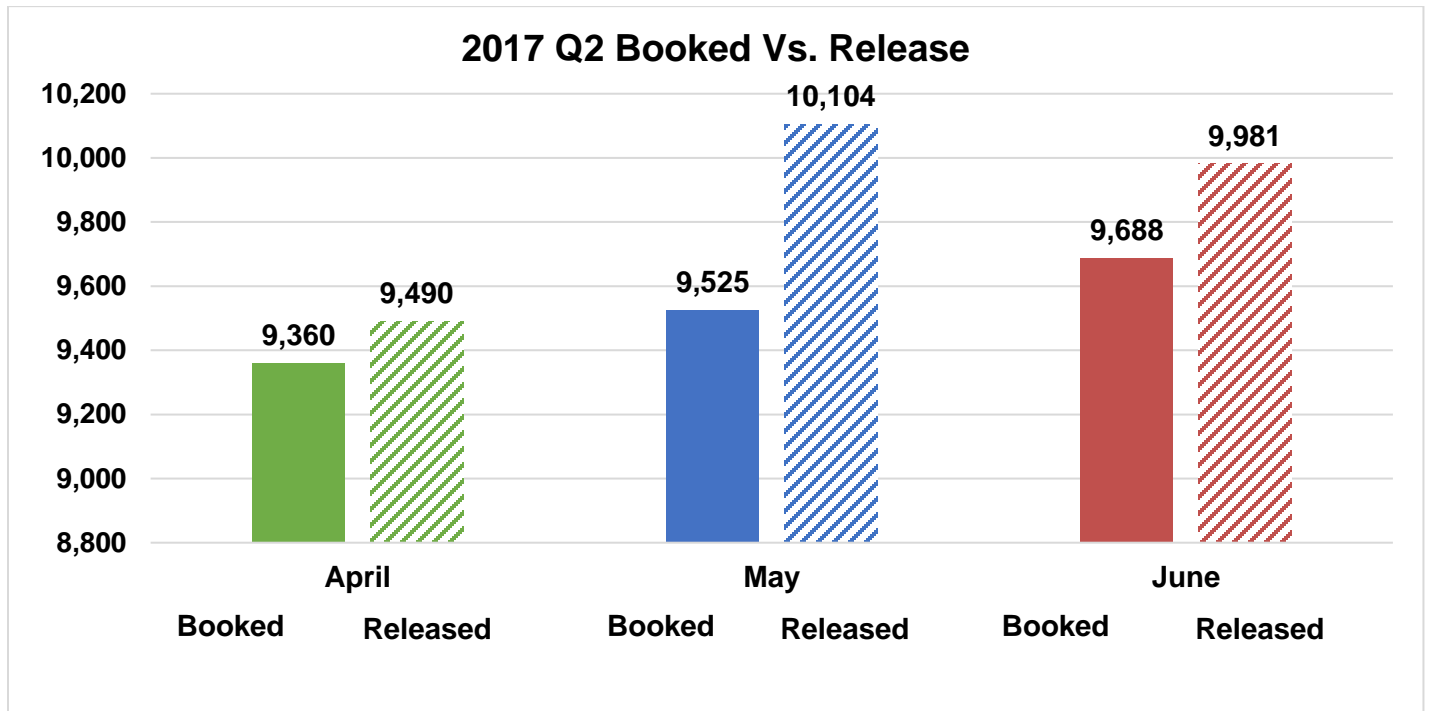
SECOND QUARTER 2017 - ARRESTS VS. BOOKINGS

The graph below compares the average Arrests and Bookings for this quarter.



SECOND QUARTER 2017 – BOOKINGS VS. RELEASES

LASD averaged approximately 9,858 releases this quarter. That’s an increase of approximately 572 releases compared to last quarter (average of 9,286).



LA COUNTY JAIL RELEASE PRACTICES

Due to conditions of overcrowding, during this quarter traditional county sentenced inmates were subject to early release under the following conditions.

Month	Release Criteria Male	Release Criteria Female	*M7 Release Criteria	**Short Sentence Male	**Short Sentence Female
April	30%	30%	100%	120 days	120 days
May	10%	10%	100%	120 days	120 days
June	10%	10%	100%	120 days	120 days

^Effective May 25, 2017, the release criteria was reduced to 10% both male and female.

*M7 are inmates who have designated serious and/or violent offences or have notoriety in the community are classified as M7, which requires their record jacket go through extra ‘security’ checks upon release from Sheriff’s custody.

**Shorts are inmates who are sentenced to a term in county jail, which after all legal credits are awarded and the current jail percentage time is considered, are immediately released from Sheriff’s custody after processing from court.

HOMELESS AND VETERAN

Homeless Population

The chart below provides an average breakdown of the inmate population who stated they were homeless by gender and major race category.

	April	May	June	TOTAL	AVERAGE
Male	1,948	2,001	2,013	5,962	1,987
Female	284	300	314	898	299
Total	2,232	2,301	2,327	6,860	2,287

	April	May	June	TOTAL	AVERAGE
Hispanic	667	669	709	2,045	682
Black	990	1,027	999	3,016	1,005
White	520	530	539	1,589	530
Other	55	75	80	210	70
Total	2,232	2,301	2,327	6,860	2,287

* Previously reported homeless statistic were under-reported due to a system error that was discovered and rectified in December 2017.

Veteran Population

The chart below provides an average breakdown of the inmate population who stated they have served in the United State Military by gender and major race category.*

	April	May	June	TOTAL	AVERAGE
Male	219	215	278	712	237
Female	1	3	8	12	4
Total	220	218	286	724	241

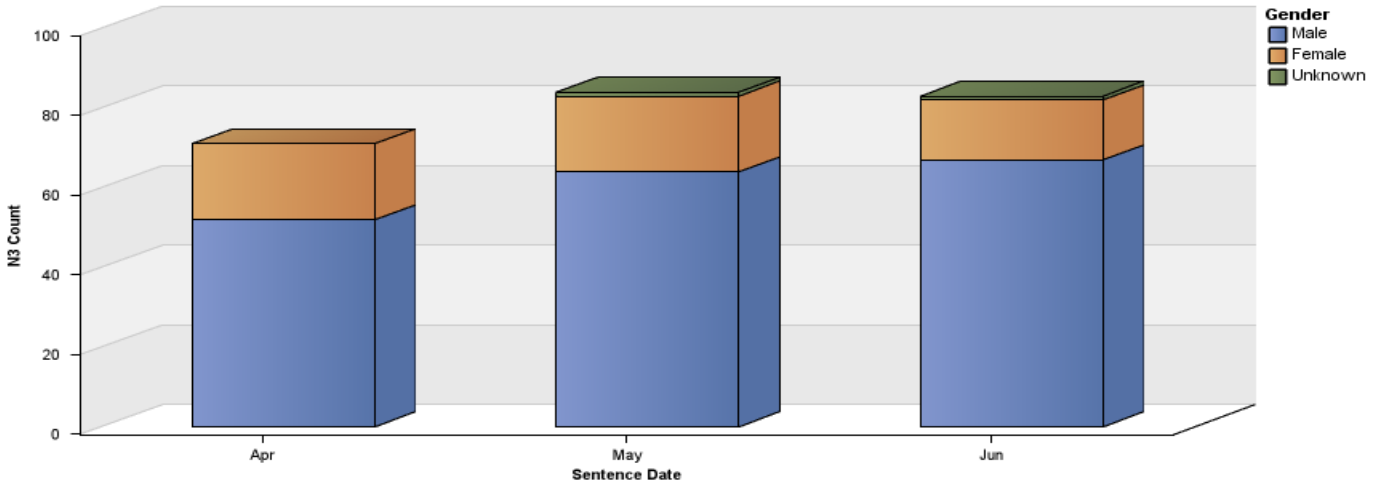
	April	May	June	TOTAL	AVERAGE
Hispanic	59	57	85	201	67
Black	80	77	105	262	87
White	69	74	83	225	75
Other	13	10	13	36	12
Total	220	218	286	724	241

* These are numbers based upon self-identification and have not been confirmed by the Veterans Administration.

AB109 Split and Non Split Sentence

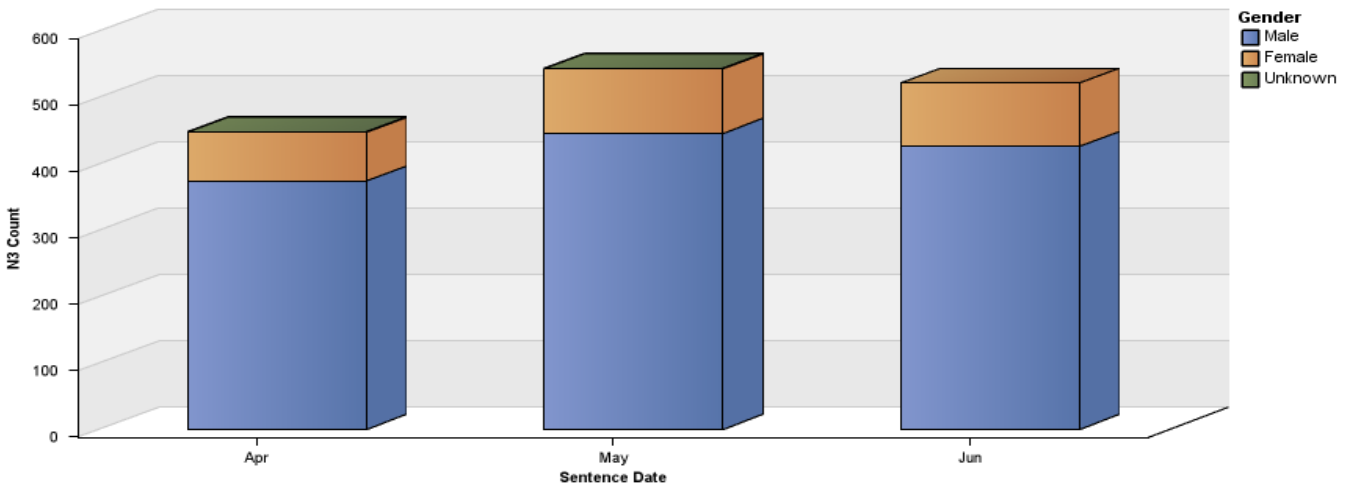
Under AB109, judges can impose a “split sentence” when sentencing a convicted defendant to time in jail. A split sentence requires a portion of the sentence served in custody, and a portion of the sentence served under supervision of the probation department in the community. The Split Sentence option in sentencing results in a shorter stay for inmates.

**Non-violent, Non-serious, Non-sex offender (N3) Subjects (Split Only)
April 2017 to June 2017**



	April	May	June	Average
Male	52	64	67	61
Female	19	19	15	17
Unknown	0	1	1	1
Summary	71	84	83	79

Non-violent, Non-serious, Non-sex offender (N3) Subjects (Non-Split Only)



	April	May	June	Average
Male	373	432	423	409
Female	74	96	96	89
Unknown	1	1	0	1
Summary	448	529	519	499

*Data queried by Probation from ISAB-JAIMS system

FACILITIES OVERVIEW

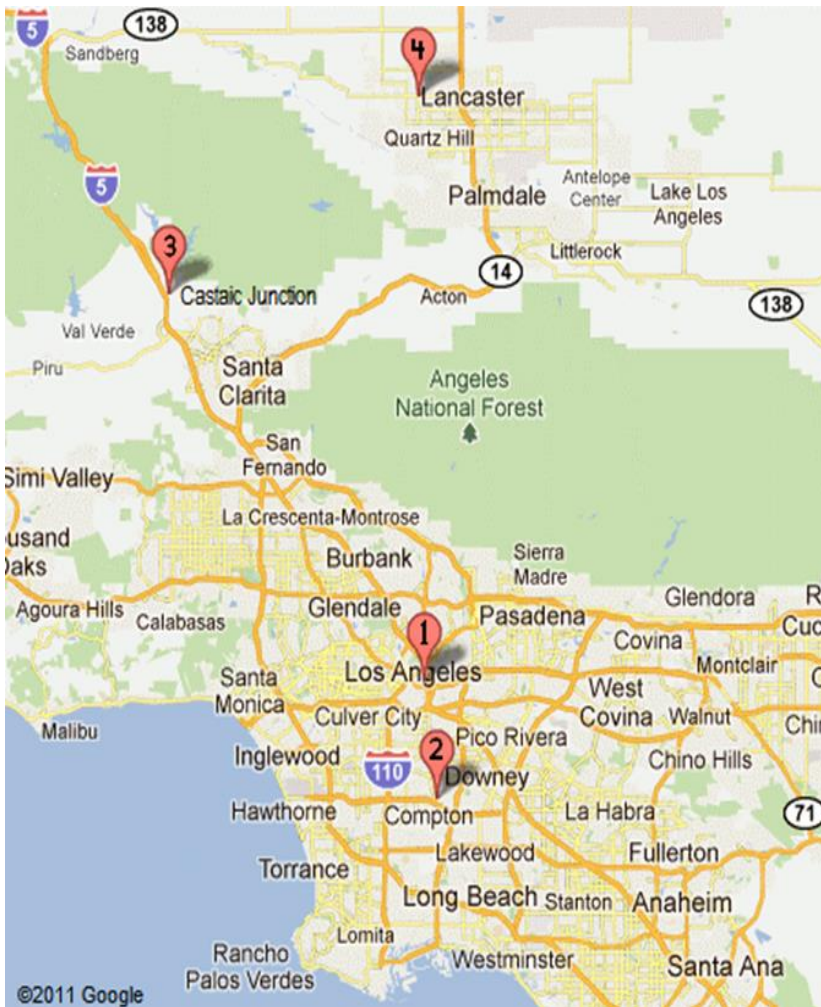
RATED CAPACITY

The Board of State and Community Corrections (BSCC) is a government body which recommends capacity limits for county jails. BSCC conducts biennial jail inspections; LASD was rated in April 2016.

Board of State and Community Corrections				
LASD Custody Facilities	BSCC Rated Capacity	Quarterly Facility ADIP	Above BSCC Rated Capacity	% BSCC Capacity
Men's Central Jail	3,529	4,274	745	121%
Twin Towers Correctional Facility	2,484	3,445	961	139%
Century Regional Detention Facility	1,708	2,049	341	120%
Pitchess Detention Center – East	926	89	-837	10%
Pitchess Detention Center – North	832	1,461	629	176%
Pitchess Detention Center – South	844	1,277	433	151%
North County Correctional Facility	2,214	4,024	1,810	182%

Total BSCC Rated Capacity*	Quarterly Facility ADIP	Total Above BSCC Rated Capacity	Total % BSCC Capacity	Total % BSCC Capacity Excluding East Facility
12,537	16,620	4,083	133%	142%

*Statistical data gathered from *Board of State and Community Corrections Inspection Report 11/2016*.



LA County Jail Facilities

1

- Men's Central Jail (MCJ)
- Twin Towers Correctional Facility (TCF)
- Los Angeles County Medical Center (LCMC)
- Correctional Treatment Center (CTC)
- Inmate Reception Center (IRC)

2

- Century Regional Detention Facility (CRDF)

3

- Pitchess Detention Center (PDC)
- PDC East Facility
- PDC North Facility
- PDC South Facility
- North County Correctional Facility (NCCF)

4

- Mira Loma Detention Center (MLDC)

JAIL HOUSING FACILITIES

MEN'S CENTRAL JAIL TOTAL INMATE POPULATION					
Security Level	April	May	June	Quarterly Average	% of Population
Security Level Low 1-4	984	1002	958	981	23%
Security Level Medium 5-7	2,475	2,472	2,414	2,454	57%
Security Level Low High 8-9	833	850	823	835	20%
FACILITY TOTAL	4,292	4,323	4,195	4,270	100%
°SUB POPULATION HOUSED THROUGHOUT FACILITY					
Housing Type	April	May	June	Quarterly Average	
*Administratively Segregated Inmates (K-10)	279	294	292	288	
> Administratively Segregated Inmates (K-1)	17	16	12	15	
**Discipline	63	70	70	68	
General Population on Psychotropic Meds	688	684	665	679	
Inmate Workers	1,056	1,060	977	1,031	
LGBT (K-6 G) Inmates	343	333	325	333	
Medical/Clinic	405	391	381	392	
^Other (K-6T/B/C)	149	155	148	151	
Pro-Per	81	75	74	76	
School Housing (EBI)	438	438	440	439	
Sexually Violent Predators	8	8	10	8	
Sex Crimes Against Children (K-6 Y) Inmates	230	249	253	244	

° Sub population housed throughout facility includes those who are classified with special housing needs and are included in the total inmate population. An inmate may belong to more than one subpopulation

*K-10-Administratively segregated for various reasons including danger to self or others

>K-1 Law Enforcement related in custody

^ K-6T Contempt of court, K6B threatened by others, K-6C protective custody

**Majority of discipline inmates are now housed at TTCF

**TWIN TOWERS CORRECTIONAL FACILITY
TOTAL INMATE POPULATION**

Security Level	April	May	June	Quarterly Average	% of Population
Security Level Low 1-4	586	586	582	584	17%
Security Level Medium 5-7	2,134	2,165	2,230	2,177	63%
Security Level Low High 8-9	671	644	705	673	20%
Facility Total	3,391	3,395	3,517	3,434	100%

°SUB POPULATION HOUSED THROUGHOUT FACILITY

Housing Type	April	May	June	Quarterly Average
* Administratively Segregated Inmates (K-10)	130	135	139	134
^ Administratively Segregated Inmates (K-1)	1	1	1	1
** Administratively Segregated Inmates (K-6B)	51	54	60	45
American's With Disabilities (ADA)	157	159	248	188
Developmentally Disabled	26	31	36	31
Discipline	106	99	106	104
Female General Population	136	138	117	131
Female Medical (CTC)	19	19	17	18
Female School Housing (EBI)	72	74	61	69
Female Workers	37	39	35	33
General Population on Psychotropic Meds Security Level 1-4	37	33	30	33
General Population on Psychotropic Meds Security Level 5-7	180	176	171	176
General Population on Psychotropic Meds Security Level 8-9	61	64	72	66
***Inmate Workers	0	0	0	0
LGBT (K-6 G) Inmates	130	134	123	129
Male School Housing (EBI)	283	268	279	277
Medical (CTC)	104	107	117	109
Mentally III – High Observation Housing (HOH)	753	807	857	806
Mentally III – Moderate Observation / Service Area (MOH)	2,189	2,221	2,301	2,237
Mentally III – Moderate Observation Housing (MOH) School Housing (EBI)	283	277	279	280
Mentally III – Moderate Observation Housing (MOH) Sex Crimes Against Children (K-6 Y) Inmates	116	128	138	127

°Sub population housed throughout facility includes those who are classified with special housing needs and are included in the total inmate population.

An inmate may belong to more than one subpopulation

**K-10-Administratively segregated for various reasons including danger to self or others*

***K-6B-Administratively segregated are at risk of assault in GP housing*

^Related to Law Enforcement-segregated from general population for safety reasons

**** Inmate workers moved to MCJ because of ADA construction project in T271*

**CENTURY REGIONAL DETENTION CENTER
TOTAL INMATE POPULATION**

Security Level	April	May	June	Quarterly Average	% of Population
Security Level Low 1-4	739	734	716	730	36%
Security Level Medium 5-7	1,042	1,052	1,074	1,056	52%
Security Level Low High 8-9	234	261	267	254	12%
Facility Total	2,015	2,047	2,057	2,040	100%

°SUB POPULATION HOUSED THROUGHOUT FACILITY

Housing Type	April	May	June	Quarterly Average
Administratively Segregated Inmates (K-10)	50	53	58	53
Discipline	27	19	16	21
Inmate Workers	335	331	341	336
Medical/Clinic	4	4	4	4
Mentally Ill – High Observation Housing (HOH)	247	258	257	254
Mentally Ill – Moderate Observation / Service Area (MOH)	237	253	246	245
Other (K-6 B)	8	8	9	8
School Housing (EBI)	486	482	495	488
Sex Crimes Against Children (K-6 Y) Inmates	2	2	3	2

°Sub population housed throughout facility includes those who are classified with special housing needs and are included in the total inmate population.

An inmate may belong to more than one subpopulation

^K-10-Administratively segregated for various reasons including danger to self or others

**PITCHESS DETENTION CENTER – EAST FACILITY
TOTAL INMATE POPULATION**

Security Level	April	May	June	Quarterly Average	% of Population
Security Level Low 1-4	57	68	82	69	77%
Security Level Medium 5-7	22	19	20	20	23%
Security Level Low High 8-9	0	0	0	0	0
Facility Total	79	87	102	89	100%

°SUB POPULATION HOUSED THROUGHOUT FACILITY

HOUSING TYPE	April	May	June	QUARTERLY AVERAGE
Fire Camp Security Levels 1-4	57	68	82	69
Fire Camp Security Levels 5-7	22	19	20	20

°Sub population housed throughout facility includes those who are classified with special housing needs and are included in the total inmate population. An inmate may belong to more than one subpopulation

**PITCHESS DETENTION CENTER – NORTH
TOTAL INMATE POPULATION**

Security Level	April	May	June	Quarterly Average	% of Population
Security Level Low 1-4	268	204	229	233	16%
Security Level Medium 5-7	1,178	1,225	1,237	1,213	83%
Security Level Low High 8-9	14	12	17	14	1%
Facility Total	1,460	1,440	1,483	1,461	100%

°SUB POPULATION HOUSED THROUGHOUT FACILITY

HOUSING TYPE	April	May	June	QUARTERLY AVERAGE
Discipline	29	29	28	29
Inmate Workers	91	90	88	90
School Housing GP (EBI) Security Levels 1-7	278	278	283	280
School Housing (EBI) Security Levels 1-7 K6y	94	94	94	94
Sex Crimes Against Children Inmates (K-6 Y) Security Level 1-7	287	287	285	286
Mentally Ill - Moderate Observation Housing (MOH)	66	112 [♣]	148	109

°Sub population housed throughout facility includes those who are classified with special housing needs and are included in the total inmate population

An inmate may belong to more than one subpopulation

♣Inmates housed at North Facility for disciplinary reasons

♣ In May, a second pod was opened due to an increase of MOH inmates

**PITCHESS DETENTION CENTER - SOUTH
TOTAL INMATE POPULATION**

Security Level	April	May	June	Quarterly Average	% of Population
Security Level Low 1-4	560	587	591	579	45%
Security Level Medium 5-7	712	696	683	697	55%
Security Level High 8-9	0	0	0	0	0%
FACILITY TOTAL	1,272	1,283	1,274	1,276	100%

°SUB POPULATION HOUSED THROUGHOUT FACILITY

HOUSING TYPE	APRIL	MAY	JUNE	QUARTERLY TOTAL
BACK ON TRACK SECURITY LEVEL 1-7	64	68	69	67
SCHOOL HOUSING (EBI) SECURITY LEVEL 1-7	286	298	308	297
INMATE WORKERS SECURITY LEVEL 1-7	492	487	468	482

°Sub population housed throughout facility includes those who are classified with special housing needs and are included in the total inmate population. An inmate may belong to more than one subpopulation

**NORTH COUNTY CORRECTIONAL FACILITY
TOTAL INMATE POPULATION**

Security Level	April	May	June	Quarterly Average	% of Population
Security Level Low 1-4	715	769	732	738	18%
Security Level Medium 5-7	2,286	2,271	2,245	2,267	56%
Security Level High 8-9	991	1,028	1,029	1,016	25%
Facility Total	3,991	4,068	4,006	4,021	100%

°SUB POPULATION HOUSED THROUGHOUT FACILITY

Housing Type	April	May	June	Quarterly Average
Administratively Segregated Inmates (K-10) Security Level 1-8	2	2	1	2
Administratively Segregated Inmates (K6-B) Security Level 1-8	126	127	124	126
Discipline Security Level 1-7	176	171	170	172
Inmate Workers Security Level 1-7	706	698	700	701
Medical/Clinic Security Level 1-7	10	10	4	8
School Housing (EBI) Security Level 1-8	182	168	176	175
Veterans	56	57	56	56

°Sub population housed throughout facility includes those who are classified with special housing needs and are included in the total inmate population.

An inmate may belong to more than one subpopulation

**K-10-Administratively segregated for various reasons including danger to self or others*

POPULATION OVERVIEW

INMATE POPULATION DEMOGRAPHICS

Racial demographics this quarter indicate the three most populous racial groups within the LA County Jail for both male and female offenders are Hispanic (50%), Black (30%), and White (16%).

COMBINED	April 2017		May 2017		June 2017		Quarterly Average	Quarterly %
	Race	Population	%	Population	%	Population		
Hispanic	8,617	50%	8,672	51%	8,641	51%	8643	51%
Black	5,094	30%	5,069	30%	5,118	30%	5094	30%
White	2,690	16%	2,673	16%	2,663	16%	2675	16%
All Others	615	4%	617	4%	618	4%	617	4%
Chinese	22	0%	26	0%	24	0%	24	0%
Filipino	25	0%	26	0%	29	0%	27	0%
Pacific Islanders	7	0%	5	0%	8	0%	7	0%
Japanese	6	0%	5	0%	7	0%	6	0%
American Indian	2	0%	2	0%	2	0%	2	0%
Total	17,078	100%	17,095	100%	17,108	100%	17,094	100%

MALE	April 2017		May 2017		June 2017		Quarterly Average	Quarterly %
	Race	Population	%	Population	%	Population		
Hispanic	7,692	52%	7,727	52%	7,697	52%	7705	52%
Black	4,394	29%	4,355	29%	4,412	30%	4387	29%
White	2,234	15%	2,210	15%	2,200	15%	2214	15%
All Others	524	4%	519	3%	527	4%	523	4%
Chinese	19	0%	23	0%	19	0%	20	0%
Filipino	20	0%	21	0%	21	0%	21	0%
Pacific Islanders	6	0%	5	0%	7	0%	6	0%
Japanese	5	0%	4	0%	5	0%	5	0%
American Indian	1	0%	2	0%	2	0%	2	0%
Total	14,894	100%	14,866	100%	14,889	100%	14,883	100%

FEMALE	April 2017		May 2017		June 2017		Quarterly Average	Quarterly %
	Race	Population	%	Population	%	Population		
Hispanic	926	42%	945	42%	944	43%	938	42%
Black	701	32%	714	32%	707	32%	707	32%
White	457	21%	463	21%	463	21%	461	21%
All Others	91	4%	97	4%	91	4%	93	4%
Chinese	3	0%	3	0%	5	0%	4	0%
Filipino	5	0%	5	0%	8	0%	6	0%
Pacific Islanders	2	0%	-	0%	1	0%	1	0%
Japanese	1	0%	1	0%	2	0%	1	0%
American Indian	1	0%	-	0%	-	0%	0	0%
Total	2,185	100%	2,229	100%	2,219	100%	2,211	100%

*Statistical data are averages gathered from *Custody Division Daily Briefing Report*.

INMATE POPULATION OFFENDER AGE GROUPS

The 26-34 year old cohort was the most frequently represented age group within the jail population this quarter, followed by the 18-25 year old cohort.

COMBINED	April 2017		May 2017		June 2017		Quarterly Average	Quarterly %
	Age Group	Population	%	Population	%	Population		
18 to 25	4,541	27%	4,461	26%	4,471	26%	4,491	26%
26 to 34	5,502	32%	5,502	32%	5,539	32%	5,514	32%
35 to 39	2,303	13%	2,344	14%	2,352	14%	2,333	14%
40 to 44	1,512	9%	1,521	9%	1,517	9%	1,517	9%
45 & Older	3,221	19%	3,266	19%	3,229	19%	3,239	19%
Total	17,078	100%	17,095	100%	17,108	100%	17,094	100%

MALE	April 2017		May 2017		June 2017		Quarterly Average	Quarterly %
	Age Group	Population	%	Population	%	Population		
18 to 25	3,986	27%	3,925	26%	3,940	26%	3,950	27%
26 to 34	4,723	32%	4,714	32%	4,737	32%	4,725	32%
35 to 39	1,978	13%	2,006	13%	2,041	14%	2,008	13%
40 to 44	1,329	9%	1,332	9%	1,326	9%	1,329	9%
45 & Older	2,878	19%	2,889	19%	2,846	19%	2,871	19%
Total	14,894	100%	14,866	100%	14,889	100%	14,883	100%

FEMALE	April 2017		May 2017		June 2017		Quarterly Average	Quarterly %
	Age Group	Population	%	Population	%	Population		
18 to 25	555	25%	537	24%	532	24%	541	24%
26 to 34	779	36%	789	35%	802	36%	790	36%
35 to 39	325	15%	338	15%	312	14%	325	15%
40 to 44	183	8%	188	8%	191	9%	188	8%
45 & Older	344	16%	377	17%	383	17%	368	17%
Total	2,185	100%	2,229	100%	2,219	100%	2,211	100%

*Statistical data are averages gathered from *Custody Division Daily Briefing Report*.

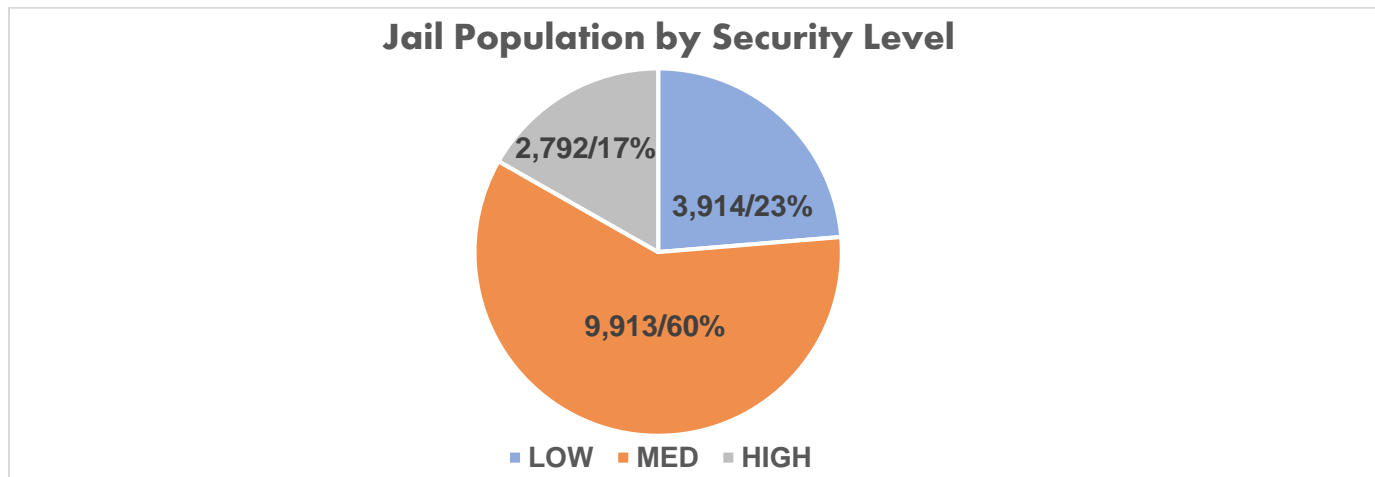
CLASSIFICATION AND RE-CLASSIFICATION

LASD utilizes the Northpointe Classification system to assign security levels to inmates. The security levels guide where an inmate will be housed based on their individual risk for in-custody misconduct. Lower security housing areas offer more programming and privileges to better prepare the inmates for release. Higher security housing is more restricted and therefore limited in what programs are offered, due to potential risk of serious misconduct and/or escape by the high security level inmate population.

*Security Level Housing by Facility				
Month	Low	Medium	High	Total
April	3,907	9,883	2,742	16,532
May	3,948	9,929	2,793	16,669
June	3,888	9,928	2,842	16,658
Average	3,914	9,913	2,792	16,620
Percent	23%	60%	17%	100%

*K-10 (Ad-Seg) inmates are re-evaluated for reclassification of security level during the re-class process which occurs every 45 days.

This chart only includes inmates housed in LASD Type II facilities. Does not include inmates housed in alternative custody beds



The pie graph above depicts the average number of inmates housed this quarter by security level. The percentage is calculated to the Facility ADIP for this quarter (17,069).

Re-Classification Statistics

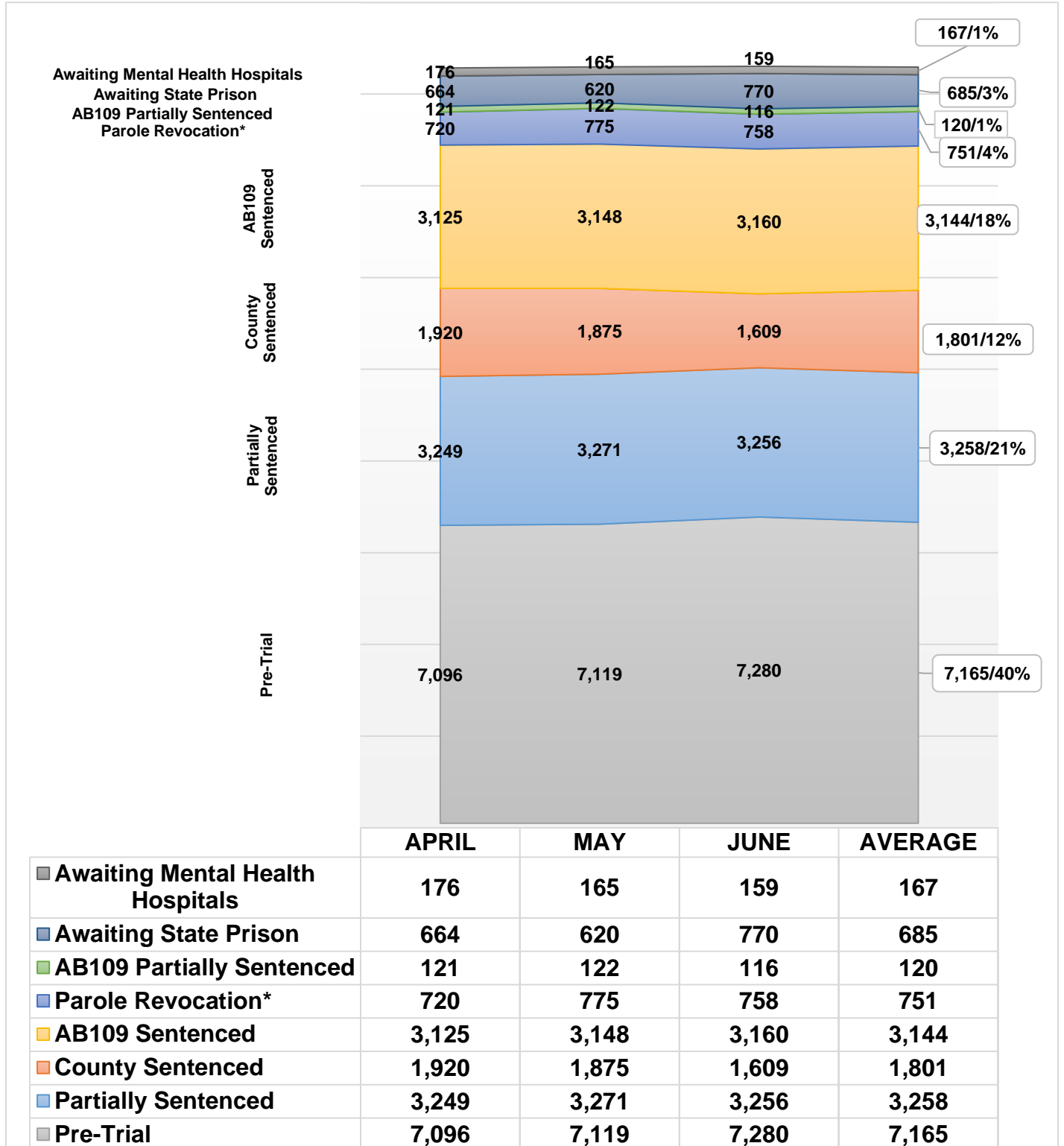
Inmates are periodically reclassified (approximately every 45 days) to determine if their security level is still appropriate or should be reduced or increased based upon their conduct.

* The periodic assessment increased during the quarter due to an increase in personnel to conduct the assessments timely.

	ADIP	Disciplinary	Inmate Request	Legal Status	Other	Periodic	Sentence	Staff	TOTALS	% of ADIP
APRIL	17,024	919	3	9	3	4,694	930	47	6,605	39%
MAY	17,106	1,163	2	10	1	5,536	1,161	56	7,929	46%
JUNE	17,077	1,007	3	17	3	4,960	1,032	53	7,075	41%
Total		3,089	8	36	7	15,190	3,123	156	21,609	
Average		1,030	3	12	2	5,063	1,041	52	7,203	

Inmate Population Breakdown

The inmate population consists of various categories of inmates in broad groupings, including: pre-trial, traditional county sentenced, AB 109 sentenced, AB109 sentenced with additional charges, parole/revocation violators, and those awaiting transfer to State Prison.



Parole Revocation includes PRCS Revocation 3455, Flash Incarceration 3454 and Inmates with a 3056 hold.

INMATE POPULATION BREAKDOWN CONTINUED

- **AWAITING STATE PRISON**
 - During this quarter, an average of 685 inmates were awaiting transfer to state prison, some while pending trial on other cases.

- **AB109 PAROLE AND PROBATION VIOLATORS**
 - An average of 751 AB109 inmates were in custody for violating their parole or probation.

- **AB109 SENTENCED**
 - An average of 3,144 inmates were in custody, sentenced under AB109.

- **TRADITIONAL COUNTY SENTENCED INMATE POPULATION**
 - The average daily count for the traditional county sentenced (TCS) population was 1,801 approximately 12% of the inmate population.

- **PRE-TRIAL INMATE POPULATION**
 - During this quarter, there were approximately 28,573 new bookings into the LA County Jail. Forty percent (40%) of the average daily inmate population (17,069) was comprised of inmates who were pre-trial. Pre-trial inmates are those who have an open case and have not been sentenced by the courts.

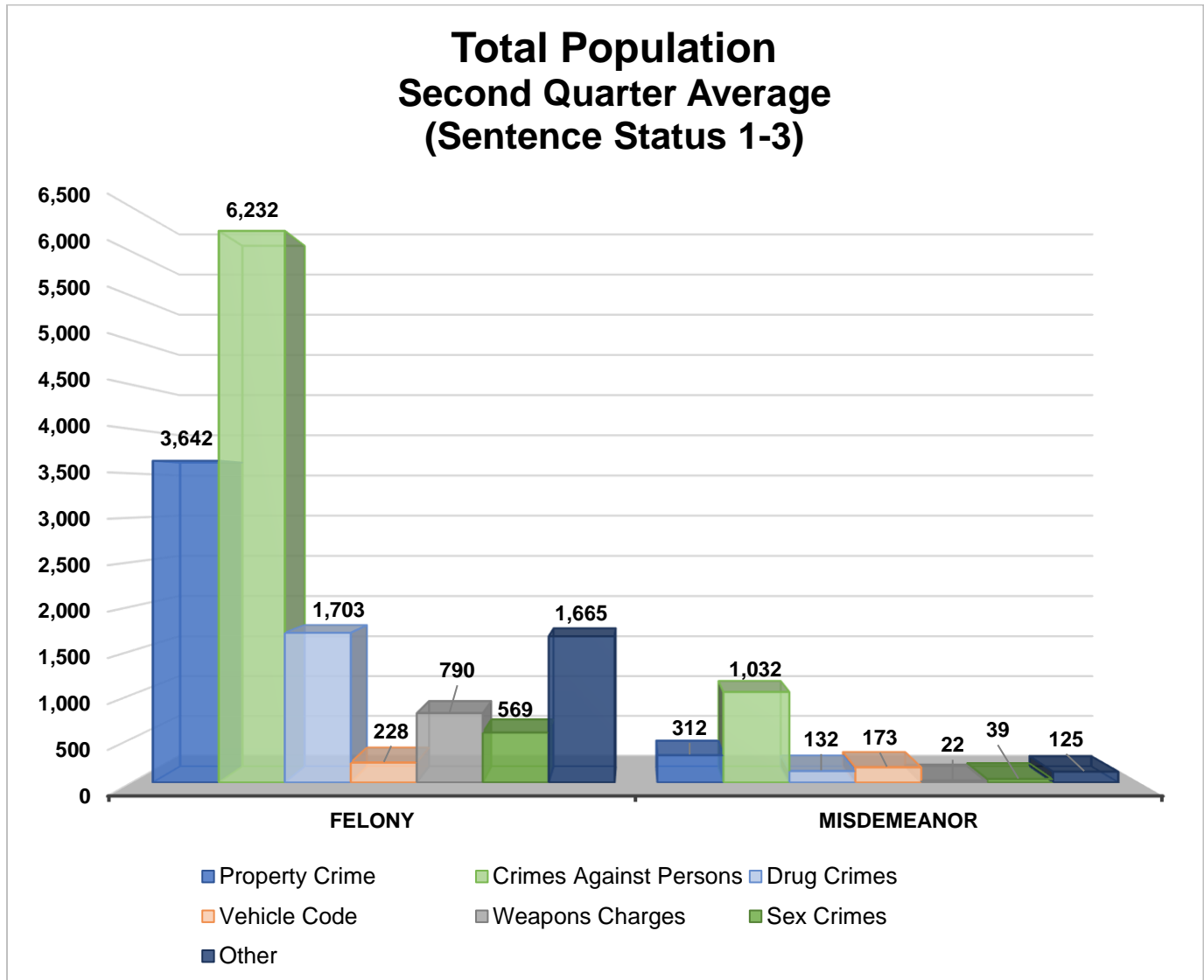
CRIME CLASSIFICATION STATISTICS

The chart below provides an average breakdown for the entire inmate population, both sentenced and un-sentenced, by arrest category.

Population (Sentence Status 1-3)

Arrest Category	Property Crime	Crimes Against Persons	Drug Crimes	Vehicle Code	Weapons Charges	Sex Crimes	Other	Total	Percentage of the Population
Felony	3,642	6,232	1,703	228	790	569	1,665	14,829	89%
Misdemeanor	312	1,032	132	173	22	39	125	1,834	11%
Total	3,954	7,264	1,835	401	812	609	1,789	16,664	100%

**Information contained is based on a snapshot of the daily inmate population purge every Tuesday.*

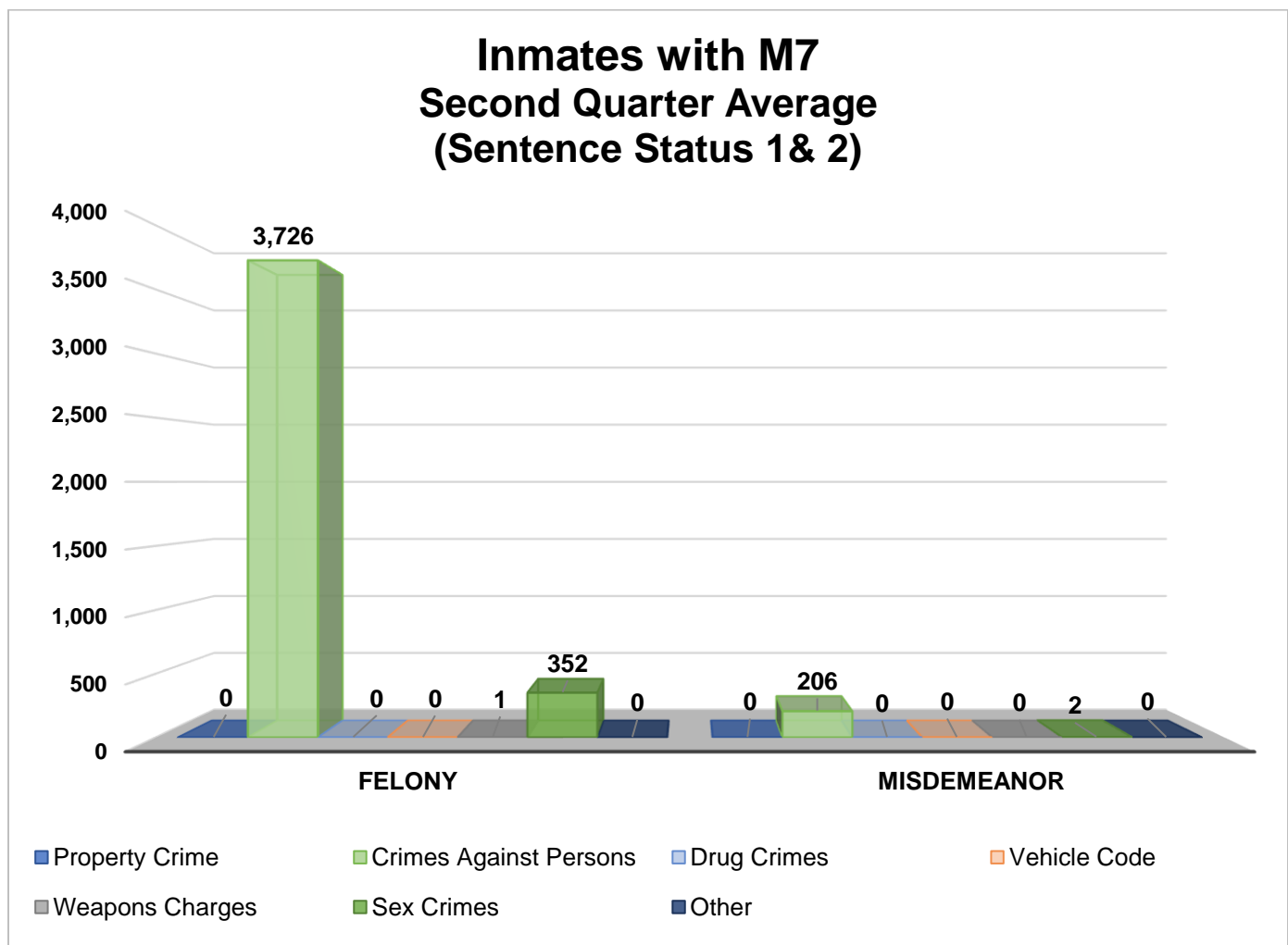


INMATES WITH ASSAULTIVE/VIOLENT CHARGES (M7)

The chart below provides a breakdown for the inmate population with M7 charges, sentence status one and two, by arrest category.

Inmates with Assaultive/Violent Charges (M7) (Sentence Status 1 & 2)

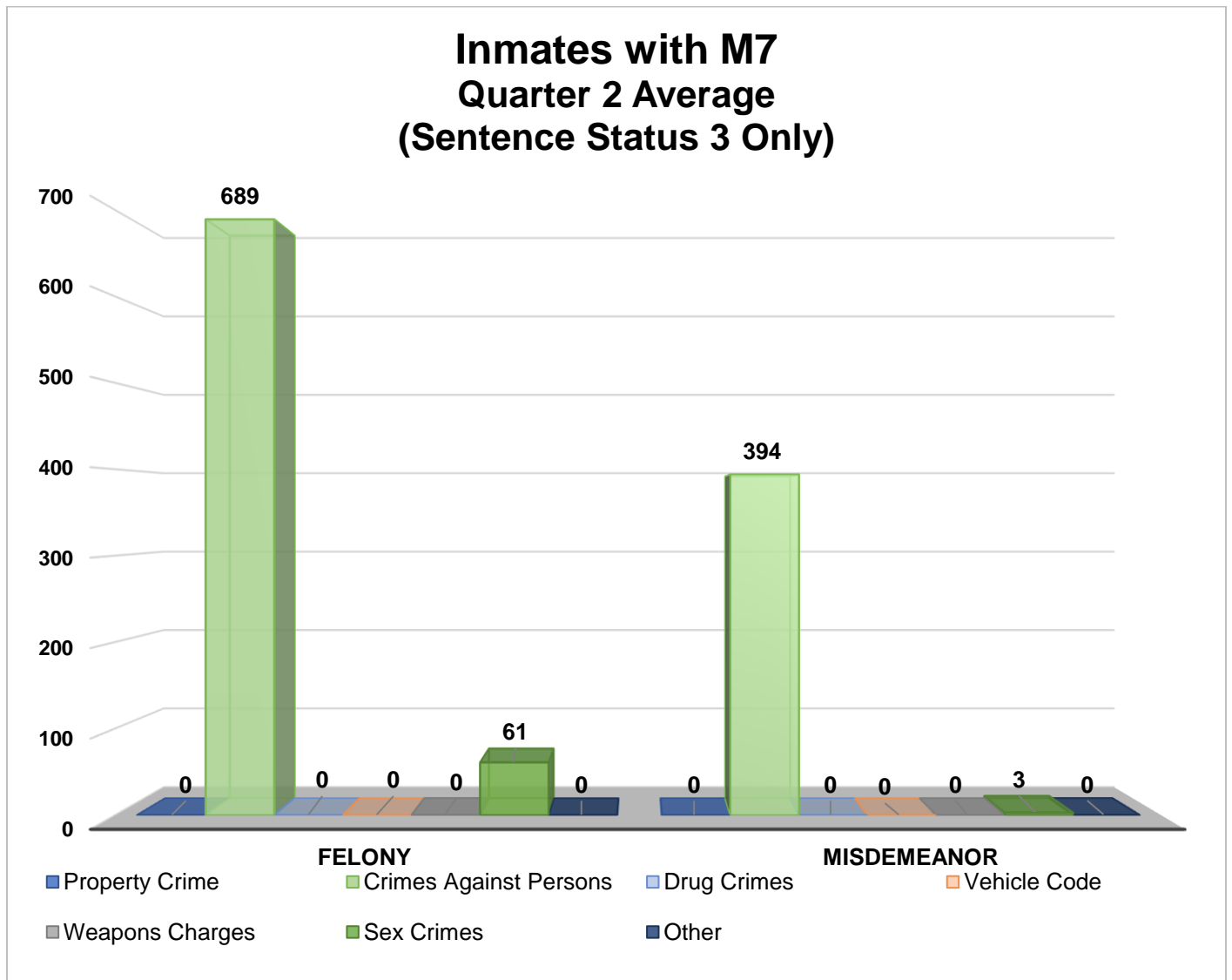
Arrest Category	Property Crime	Crimes Against Persons	Drug Crimes	Vehicle Code	Weapons Charges	Sex Crimes	Other	Total	Percentage of the Population
Felony	0	3,726	0	0	1	352	0	4,079	95%
Misdemeanor	0	206	0	0	0	2	0	208	5%
Total	0	3,932	0	0	1	354	0	4,287	100%



INMATES WITH ASSAULTIVE/VIOLENT CHARGES (M7) CONTINUES

Inmates with Assaultive/Violent Charges (M7) (Sentence Status 3 Only)

Arrest Category	Property Crime	Crimes Against Persons	Drug Crimes	Vehicle Code	Weapons Charges	Sex Crimes	Other	Total	Percentage of the pre-trial Population
Felony	0	689	0	0	0	61	0	750	65%
Misdemeanor	0	394	0	0	0	3	1	398	35%
Total	0	1,083	0	0	0	64	1	1,148	100%

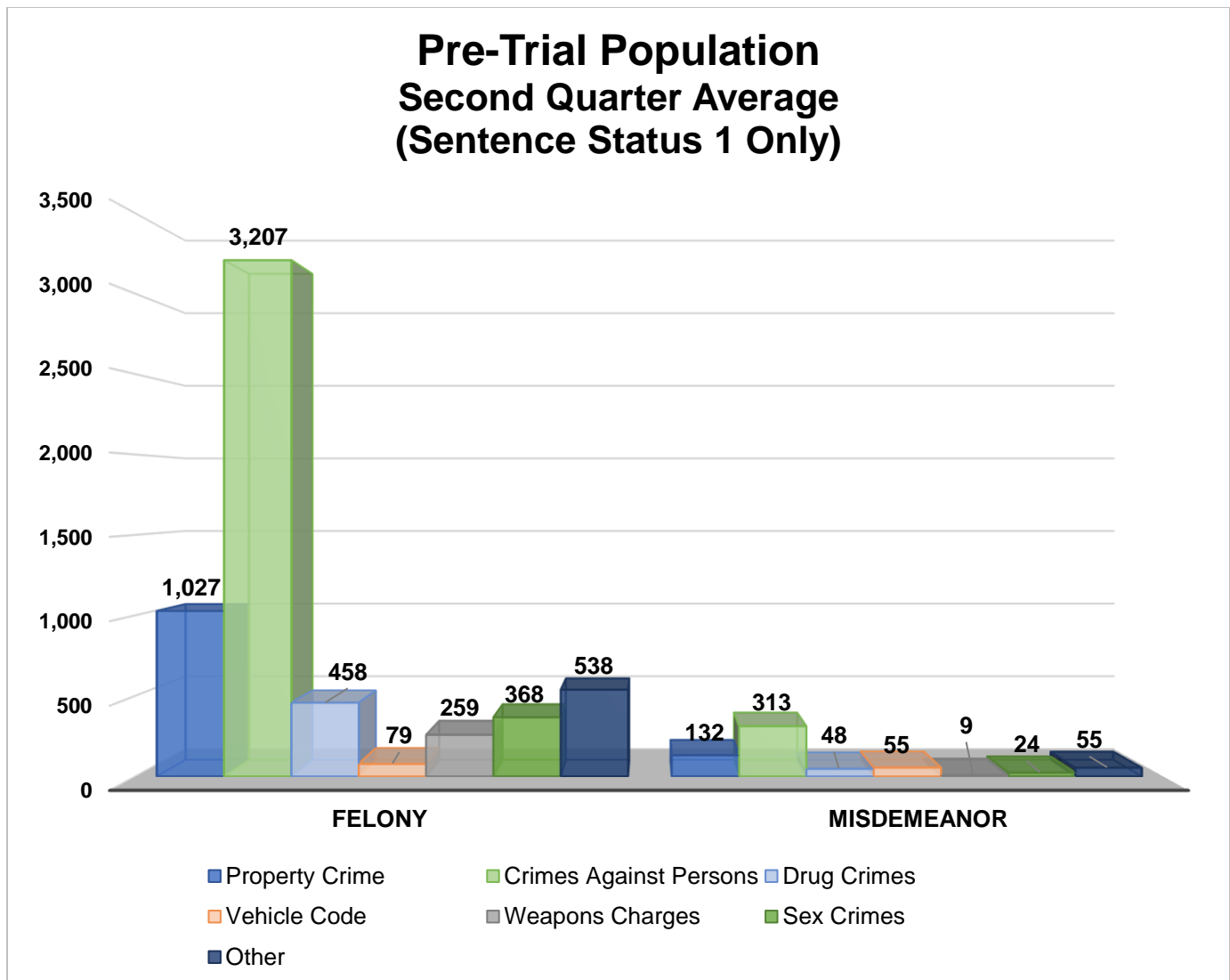


PRE – TRIAL POPULATION

The chart below provides a breakdown for the pre-trial inmate population who are awaiting court disposition.

Pre-trial Population (Sentence Status 1 only)

Arrest Category	Property Crime	Crimes Against Persons	Drug Crimes	Vehicle Code	Weapons Charges	Sex Crimes	Other	Total	Percentage of the pre-trial Population
Felony	1,027	3,207	458	79	259	368	538	5,936	90%
Misdemeanor	132	313	48	55	9	24	55	635	10%
Total	1,160	3,520	506	134	268	391	593	6,571	100%

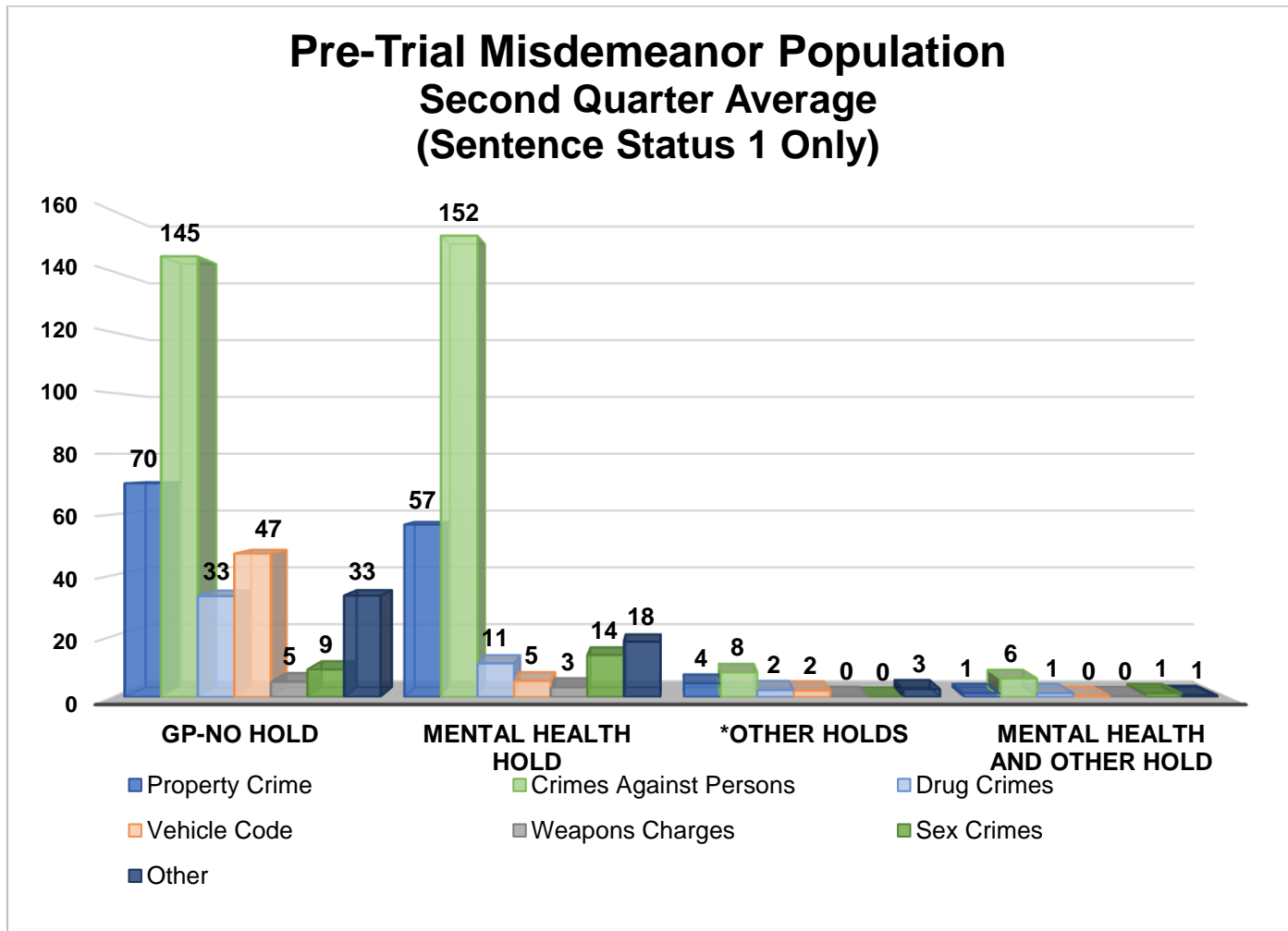


PRE – TRIAL MISDEMEANOR POPULATION

The chart below provides a breakdown for the pre-trial inmate population, incarcerated for a misdemeanor, who have not yet been convicted. “Holds” indicates the inmates are being held on a matter pending from an outside agency.

Pre-trial Misdemeanor Population (Sentence Status 1 only)

Arrest Category	Property Crime	Crimes Against Persons	Drug Crimes	Vehicle Code	Weapons Charges	Sex Crimes	Other	Total	Percentage of the pre-trial Population
GP No Hold	70	145	33	47	5	9	33	343	54%
Special Handle M with No Holds	57	152	11	5	3	14	18	260	41%
GP with Holds	4	8	2	2	0	0	3	20	3%
Special Handle M with Holds	1	6	1	0	0	1	1	11	2%
Total	133	311	48	55	9	24	55	633	100%



PRE-TRIAL BAIL HOLDS

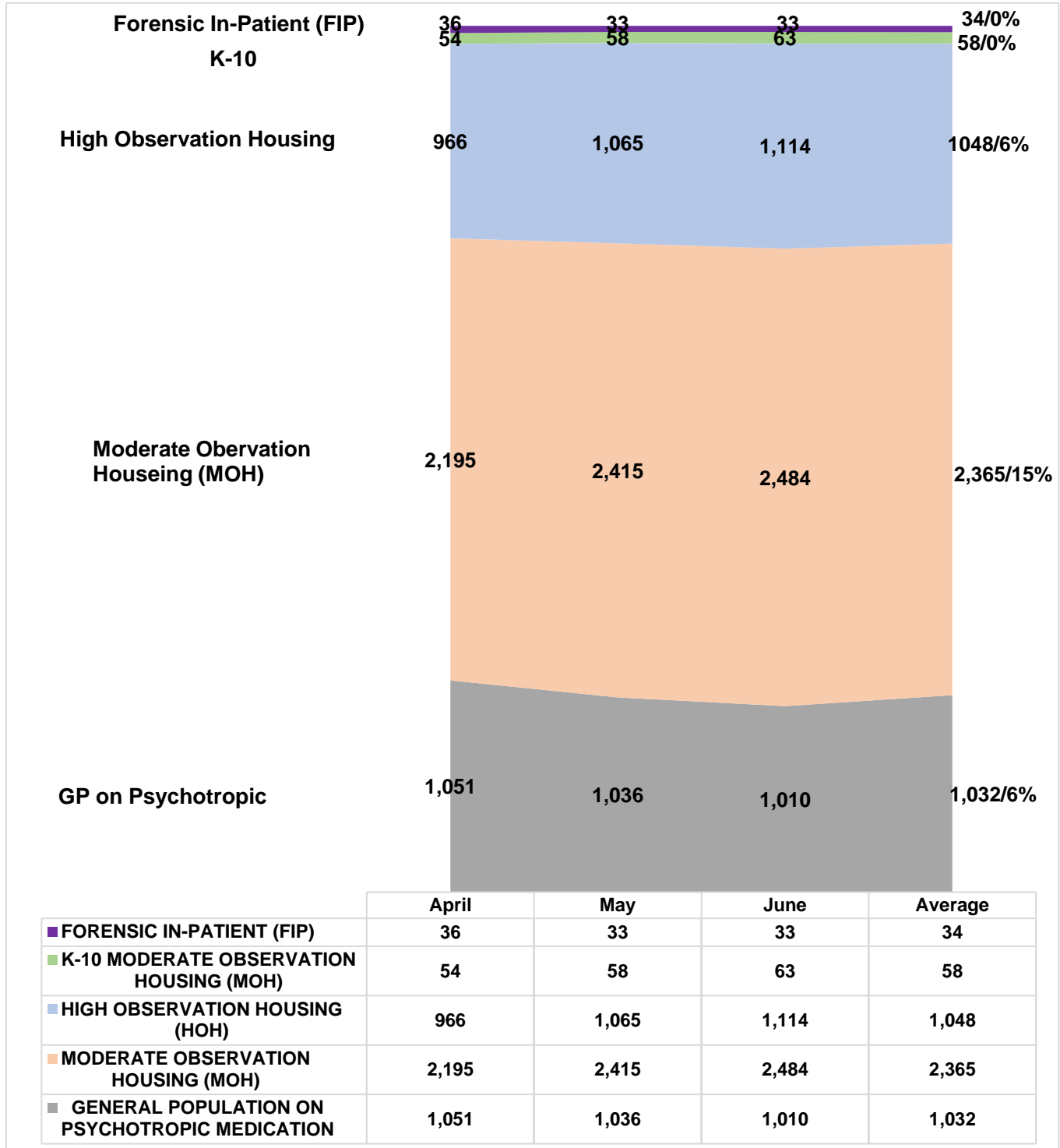
The numbers below represent the average number of inmates in LASD custody eligible for bail with the noted bail amounts.

Sentence Status 1	April			May			June			Quarter 2 Average		
	With Hold	No Hold	Total	With Hold	No Hold	Total	With Hold	No Hold	Total	With Hold	No Hold	Total
\$1 - \$25,000	13	201	214	12	203	214	12	222	234	12	209	221
\$25,001 - \$26,000	4	27	30	3	27	30	3	33	36	3	29	32
\$26,001 - \$50,000	20	601	621	22	584	606	27	623	650	23	602	626
\$50,001 - \$100,000	26	790	815	31	790	821	30	813	843	29	798	826
\$100,001 - \$500,000	63	1340	1403	63	1383	1446	66	1390	1456	64	1371	1435
\$500,001 - \$1 Million	53	1312	1365	51	1288	1339	52	1274	1325	52	1291	1343
No Bail	365	2228	2593	359	2247	2606	356	2315	2671	360	2263	2623
Total	544	6497	7040	542	6521	7062	544	6670	7214	543	6562	7105

**This information is derived from a point-in-time snapshot. Limitations with our data systems and limitations in obtaining timely court information may result in inaccuracies.*

MENTAL HEALTH INMATE POPULATION

This quarter the overall inmate population was 17,069; the mental health population accounted for 27 percent of this population. Currently, inmates identified with Mental Health needs requiring specialized housing moderate or high observation housing, account for 21 percent of the overall population. This remaining 6 percent have been treated and continue to receive psychotropic medication while housed in general population.



MISDEMEANOR INCOMPETENT TO STAND TRIAL (MIST)

The Los Angeles County Jail houses inmates who are awaiting trial for misdemeanor charges who have been found to be incompetent to stand trial. This quarter the average number of inmates on MIST is 168.

Misdemeanor Incompetent to Stand Trial (MIST)									
April			May			June			Quarterly Average
Male	Female	Total	Male	Female	Total	Male	Female	Total	
91	54	145	105	63	168	126	64	191	168

AMERICANS WITH DISABILITIES ACT (ADA)

ADA Housing is used to accommodate inmates with mobility limitations and/or physical disabilities. This quarter the average number of inmates requiring ADA is 188 which is slightly higher than last quarter's (161) total.

Americans With Disabilities Act (ADA)				
Housing Area	April	May	June	Quarterly Average
Twin Towers Module 232	157	159	248	188

MEDICAL HOUSING

Medical Outpatient/Specialty Housing (MOSH) is provided to inmates who require a level of medical treatment beyond that of stabilized medication distribution (pill call). The MOSH area in MCJ is also used to house inmates with mobility issues.

Additional Medical Housing – Not ADA Designated				
Housing Area	April	May	June	Quarterly Average
Correctional Treatment Center (CTC)	123	126	134	128
Los Angeles County Medical Center (LCMC)	25	24	24	24
*MCJ Medical/Clinic	405	391	381	392
Monthly Total	552	541	538	544

**Includes some ADA housing*

IN-CUSTODY PROGRAMS

LA COUNTY INMATE IN-CUSTODY PROGRAMS

The Los Angeles County Jail offers several in-custody programs. Programs vary from a number of in-custody work assignments, vocational job training, education, and life skill classes, as well as fire camp training and California Department of California Rehabilitative fire camp placement for AB109 inmates. Various programs award sentenced inmates additional time credits for their participation pursuant to the California Penal Code:

CREDIT EARNINGS

Program	Penal Code	Credit Earned	Type of Inmate
Sentenced GT/WT	4019 PC	Day-for-Day (1:1)	All Sentenced Inmates
Conservation	4019.1 PC	One and one half-for One (1.5:1)	All Sentenced Inmates
Fire Camp	4019.2 PC	Two-for-One (2:1)	AB109 Sentenced Inmates
Milestone	4019.4 PC	Up to 6 weeks per year	AB109 Sentenced Inmates

CONSERVATION WORK PROGRAM (CWP)

The Conservation Work Program (CWP) requires inmates to complete their adjusted sentence while working in various job classifications, giving them the skills and work discipline necessary to increase their chances of success once released. Effective January 2015, all sentenced offenders, including Traditional County Sentenced (TCS) inmates are eligible to receive credits pursuant to Penal Code Section 4019.1. For this quarter, approximately 2,837 offenders (17% of the population) participated in CWP.

CONSERVATION WORK PROGRAM (CWP)				
Inmate Type	April	May	June	Quarterly Average
Inmates Participated In Programs	2,947	2,882	2,681	2,837

FIRE CAMP TRAINING PROGRAM

Fire Camp Training and California Institute for Women (CIW/CSCR) training are aligned under the Conservation Work Program (CWP). This program is the first step of training before an inmate may participate in a State facilitated Fire Camp Program. Offenders who are sentenced under AB109 are eligible to receive credits pursuant to Penal Code 4019.1. The average number of inmates enrolled in the Fire Camp training program for this quarter was 95.

FIRE CAMP TRAINING CAMP				
Housing Type	April	May	June	Quarterly Average
PDC Fire Camp Training (Men)	84	90	102	92
CIW Fire Camp Training (Women)	3	4	3	3
Monthly Totals	87	94	105	95

CALIFORNIA DEPARTMENT OF CORRECTIONS AND REHABILITATION (CDCR) **FIRE CAMP PROGRAM**

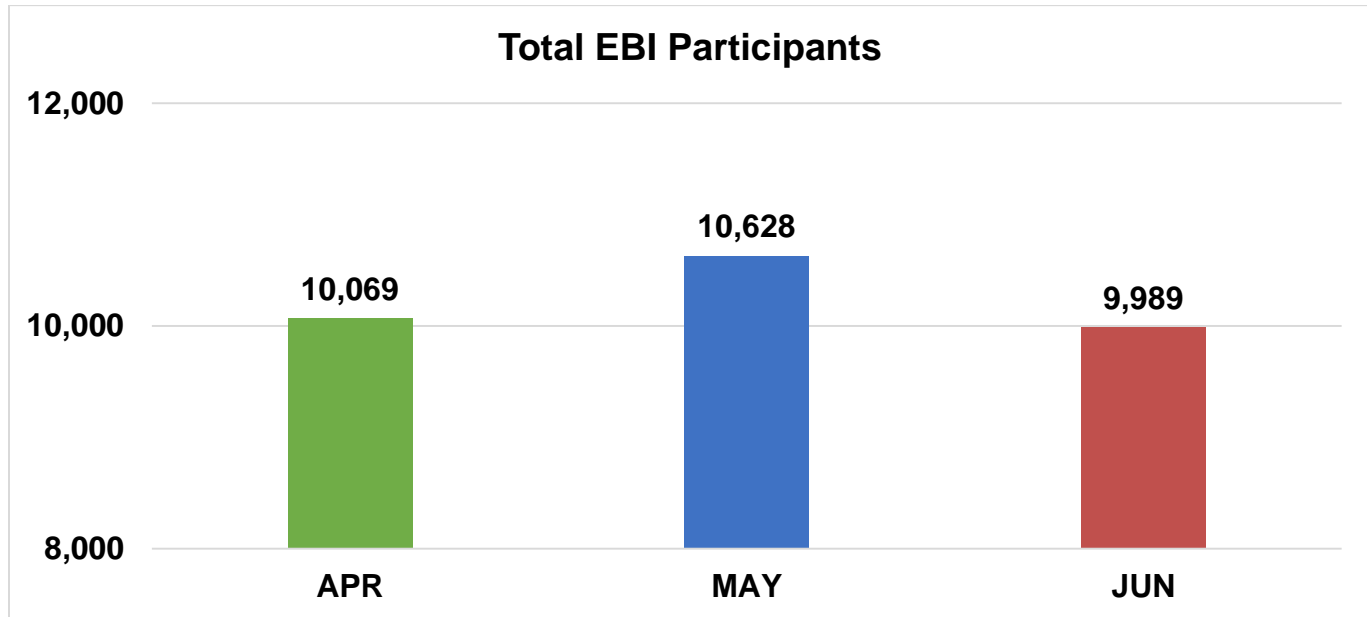
Once an inmate passes all necessary requirements in the Fire Camp Training Program located at PDC East facility, they are transferred to one of five state contracted fire camp sites where they will serve the remainder of their adjusted sentence. Offenders who are sentenced under AB109 are eligible to receive credits pursuant to Penal Code 4019.2. The average number of inmates assigned to CDCR Fire Camps for this quarter was 69.

CDCR FIRE CAMP				
Fire Camp Locations	April	May	June	Quarterly Average
Acton Fire Camp	15	13	10	12
Francisquito Fire Camp	9	7	6	7
Holton Fire Camp	31	28	30	30
Julius Klein Fire Camp	15	11	9	12
Malibu Women's Fire Camp	8	9	7	8
Monthly Totals	78	68	62	69

EDUCATION BASED INCARCERATION PROGRAMS (EBI-MILESTONE)

The Education Based Incarceration Program (EBI) uses traditional and nontraditional education which is designed to reduce incarceration by increasing the educational, civic, social, economic, and life skills of its participants. Offenders who are sentenced are eligible to receive credits pursuant to Penal Code 4019.4. For this quarter, approximately 10,229 (60% of the population) inmates participated in the EBI program.

A total of 1,091 Milestone credits were awarded this quarter.



Education Based Incarceration Program (EBI)				
Inmate Type	April	May	June	Quarterly Average
*Inmates Participated in EBI	10,069	10,628	9,989	10,229
*Sub Population of EBI Participants				
EBI Participant Type	April	May	June	Quarterly Average
GP on Psych Meds	910	890	934	911
Mentally Ill (M)	2,471	2,556	2,171	2,399
^Pre-Trial Non – AB109	3,767	4,308	3,979	4,018
Post Trial Non – AB109	4,135	4,094	3,887	4,039
^Pre-Trial – AB109	57	53	54	55
Post Trial – AB109	2,086	2,138	2,049	2,091
^Unsentenced Status 1 and 2	24	35	20	26

**Data derived from ATAR system, sub-population numbers will differ from monthly total due to duplicate classifications.*

^NON-CREDIT EARNING CATEGORIES OF PARTICIPANTS IN EBI (IN EBI DORM WORKING YET NOT EARNING CREDIT DUE TO SENTENCE STATUS)

BACK ON TRACK PROGRAM

The Back on Track (BOT) program began in February 2015 and is overseen by EBI staff. The program delivers education and comprehensive reentry services to offenders before and after a participant is released from jail. The program focuses on the critical time following an inmate's release from jail, by providing the seamless reentry services vital for success, including employment and life skill services. This program is available to inmates who have been sentenced under AB109 and are eligible to receive Milestone credits. They must be enrolled in the program for 18 months—divided into 9 months in-custody and 9 months out-of-custody.

Back On Track	April	May	June	Quarterly Average
South Barrack	64	68	69	67

In-Custody S.T.A.R.T

The jail based START treatment services began at CRDF in February 2016 providing substance use disorder (SUD) treatment services to 50 women on any given day. In May of 2017, the program expanded to treat up to 124 women. In May 2017 services began at MCJ for up to 90 gay and transgender inmates and at PDC South facility treating up to 200 men in general population on any given day. Treatment services include screening, clinical assessment, group and individual counseling, case management services, medication assisted treatment, re-entry planning and care coordination with CTU and transportation to community based services post release.

In-Custody S.T.A.R.T (CRDF)	April	May	June	Quarterly Average
Enrolled	**	50	94	72
Completed	**	0	21	21

In-Custody S.T.A.R.T (MCJ)	April	May	June	Quarterly Average
Enrolled	**	17	18	18
Completed	**	0	6	6

**The month of April, the program was transitioning from Principles, Inc to the new contractor Prototypes; therefore, April numbers were not provided.

ALTERNATIVES TO CUSTODY PROGRAMS

ALTERNATIVES TO CUSTODY PROGRAMS

The Community Transition Unit (CTU), the Community Based Alternatives to Custody Unit (CBAC), and the Compliance Team work together by utilizing a variety of alternatives to custody programming options in an effort to enhance an inmate's chance of success upon release. These programs are conducted in collaboration with local agencies including Community and Faith Based Organizations, Department of Mental Health (DMH), Department of Public Health (DPH), and other organizations. It is the Department's goal to program inmates from intake through re-entry into the community. With this approach, we hope to increase public safety and reduce the rate of recidivism.

Supported by release planning overseen by the CTU, and in partnership with contracted services, inmates are provided re-entry assistance through linkages to services that are initiated while they are in-custody and continue upon release. Through the Alternatives to Custody (ATC) programs, qualifying inmates are afforded the opportunity to complete the remaining portion of their sentence in a community treatment program. Inmates who do not qualify for ATC due to security or other reasons are referred to community providers for re-entry assistance.

The ATC programs include:

Substance Treatment and Reentry Transition (S.T.A.R.T)

The Substance Treatment and Re-entry Transition (START) program is a Department Public Health, Substance Abuse Prevention Control (SAPC) funded program that places eligible male and female inmates into residential substance use disorder (SUD) treatment programs on electronic GPS monitoring as an alternative to custody (ATC) program.

Community Grant Beds

The Community Grant beds are funded through community grants. They work directly with various residential programs approved by LASD, but not affiliated with the START program, and they offer treatment beds for inmates under the ATC program. Several programs cater to specific clientele who fit a specified demographic in regards to age and gender.

Veteran's Administration (VA)

The Veteran's Administration (VA) funds SUD residential treatment, under the ATC program for inmates who are confirmed to be a veteran entitled to VA Benefits. The treatment programs are approved by the VA and are vetted by LASD.

Transitional Case Management Program (TCM)

The Transitional Case Management Program (TCM) is a Department of Public Health (DPH) funded program, whereby DPH employees refer HIV infected inmates to a residential SUD treatment facility, approved and vetted by LASD, under the ATC program.

TARZANA TREATMENT CENTER DMH/SUD PROGRAM

Tarzana Treatment Center, in partnership with LASD, DHS Correctional Health, and the Department of Mental Health, has made available 40 total beds for inmates with a co-occurring mild to moderate mental health diagnosis, and a substance use disorder (SUD). These residential SUD beds are for female. Inmates are identified by DHS Jail Linkage staff and referred to Tarzana treatment for assessment and acceptance. Inmates must still qualify for ATC programming through a validated risk assessment and criminal history review.

MENTAL HEALTH DIVERSION – NORMANDIE VILLAGE/GATEWAY

Normandie Village treats eligible male N3 inmates with mental illness who are a low security risk, and in a stabilized condition. They are selected to complete the remaining 60-180 days of their sentence in a 42 bed community-based IMD Step-down facility.

For acceptance into program, inmates must volunteer to participate in services and meet the following criteria:

1. Be 18-54 years of age
2. Must have a primary Axis I major psychiatric diagnosis
3. May have a secondary Axis I diagnosis of substance abuse
4. Must not be a registered sex offender
5. Must not have a fire setting history
6. Must be ambulatory
7. Must not have a serious or life-threatening medical problem
8. Must not require treatment in a locked setting
9. Must have applied for SSI

ALTERNATIVE TO CUSTODY STATISTICS

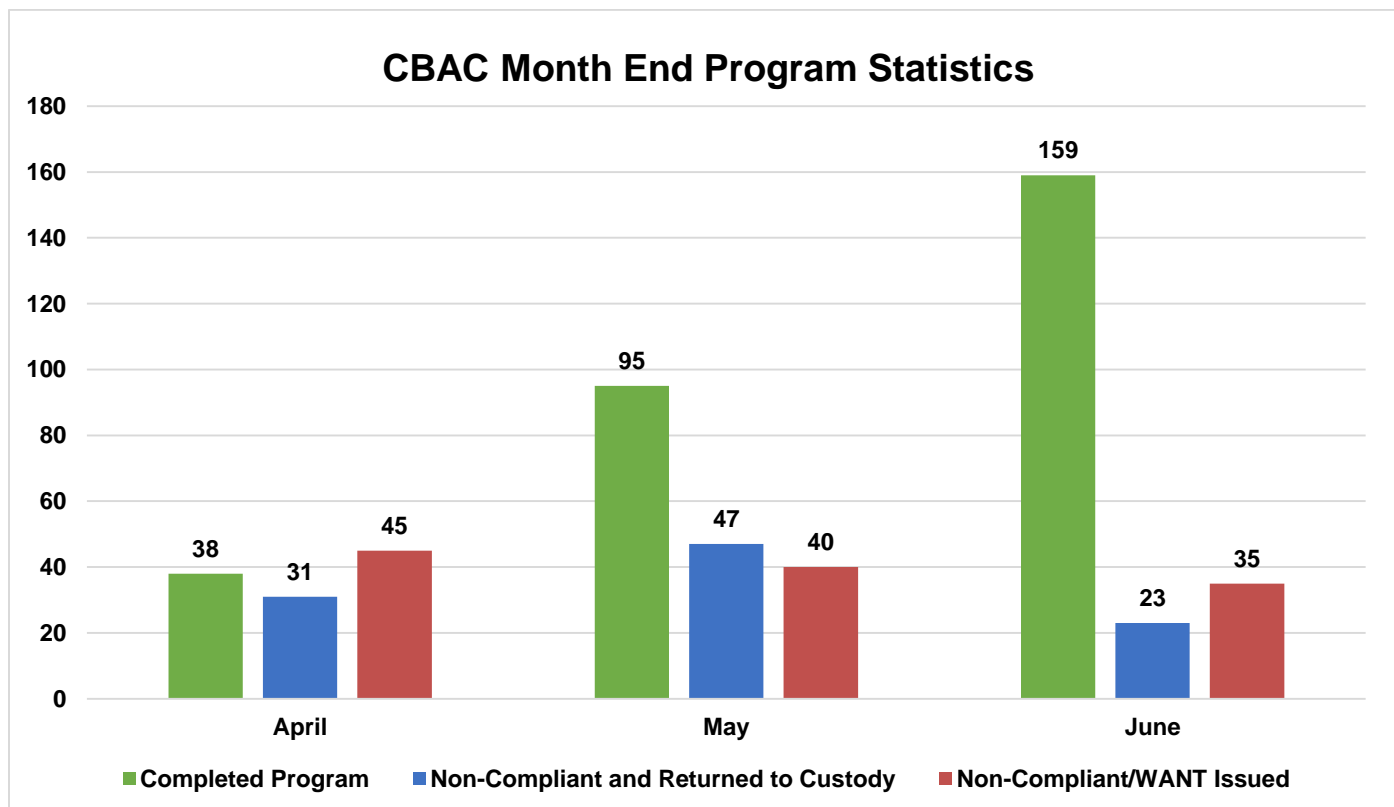
Program Quarterly Statistics	Enrolled	Completed	Returned to Custody	Absconded
START	47	35	8	0
Community Grant Beds	1	4	0	0
Veterans	2	0	0	0
Transitional Case Management	0	1	0	0
Tarzana TC DMH/SUD	4	2	0	0
Normandie Village DMH	6	3	0	0

COMMUNITY BASED ALTERNATIVES TO CUSTODY (CBAC)

The PMB's CBAC unit identifies low risk sentenced offenders within the jail population who qualify to finish their remaining sentence in and out-of-custody alternative environment. Although these individuals are outside of traditional custody, they are still under the jurisdiction of the Department.

CBAC Monthly Placement									
Program	April			May			June		
	M	F	Total	M	F	Total	M	F	Total
Electronic Monitoring Program	38	16	54	37	17	54	30	16	46
Weekender Work Program	21	0	21	30	0	30	21	0	21
Work Release Program	81	15	96	102	20	122	82	17	99
Monthly Totals	140	31	171	169	37	206	133	33	166

The graph below depicts the total number of offenders who successfully completed the remainder of their sentence on a CBAC program. It also shows the number of offenders who failed to complete the program and with the efforts of the PMB Compliance Unit, were returned back to finish their sentence and those who failed to complete the program and were not returned back to custody.



RE - ENTRY ASSISTANCE

AFFORDABLE CARE ACT (ACA)

Medi-Cal application assistance is offered to inmates at each jail facility and those inmates on the Work Release Program (WRP), home EMP, community treatment ATC and station workers. The following chart represents enrollment statistics for the second quarter of 2017:

	April	May	June	Totals	Average	Prev. Quarter Totals	% Difference
Direct inmate contact/In-Reach	769	664	621	2,054	685	1,764	16%
Applications cleared by DPSS	97	42	30	169	56	846	-80%
Applications in queue	217	316	281	814	271	578	41%
Applications approved by DPSS	97	42	30	169	56	209	-19%
Benefits received	97	42	30	169	56	209	-19%
Benefits denied	47	27	9	83	28	59	41%

DPSS' YOUR BENEFITS NOW SYSTEM IN THE PREVIOUS QUARTER WAS NOT CAPTURING THE DATA NEEDED FOR THESE STATS DUE TO A NEWLY IMPLEMENTED SYSTEM (LRS). THE SYSTEM IS WORKING NOW BUT THE PREVIOUS QUARTER'S TOTALS WEREN'T AVAILABLE TO DO A COMPARISON FOR THIS REPORT.

COMMUNITY RE-ENTRY AND RESOURCE CENTER (CRRC)

The information below are recently released inmates and inquiries and/or contacts made by members of the general public who have been assisted with services at the CRRC for the second quarter of 2017.

Inquiry Demographic Population	April	May	June	Total	Average
General Release	383	453	413	1,249	416
General Public	140	137	130	407	136
Alternative to Custody Program	9	13	7	29	10
Coordinated Release	0	0	1	1	0
Work Release	60	65	56	181	60
Phone Referral	1	4	0	5	2
Monthly Totals:	593	672	607	1,872	624

Inquiry Demographic Gender	April	May	June	Total	Average
Male	521	597	548	1,666	555
Female	108	111	119	338	113
Monthly Totals:	629	708	667	2,004	668

CTU personnel visit the Inmate Reception Center release area to educate and remind inmates waiting to go home about services available at the CRRC. Walks of the release area are performed every 90 minutes.

	April	May	June	Total	Average
Number of 90 Minute Contact Walks	75	84	78	237	79
Number of Inmates Contacted	920	1,250	1,442	3,612	1,204
Number of Flyers Distributed	619	565	782	1,966	655

CTU COORDINATED RELEASES TO VARIOUS PROGRAMS

The final 90 days leading to an inmate’s release from custody are the most critical in ensuring a successful transition from Custody to Community Based Organization (CBO) Treatment Centers. During the time leading up to their release, inmates are interviewed several times by the CBO Staff and members of the Community Transition Unit to ensure that they are matched up with a suitable treatment provider.

The coordinated release process helps to create a trust between law enforcement, inmate participants, and CBO’s. The CTU’s ultimate goal is to provide a successful recovery and re-entry into the community and to ultimately decrease recidivism.

	April	May	June	Total	Average
Coordinated Release	74	74	72	220	73

CTU VITAL RECORDS

Through the Vital Records Program, LASD staff members have been deputized by the County Registrar-Recorder to facilitate birth certificate applications for inmates born in Los Angeles County, who have requested a certified copy. The fee of \$28 for certified copies of birth certificates is funded by the Inmate Welfare Fund.

All inmates in custody are eligible to apply for a California ID Card. The issued ID’s are provided to the inmates upon their release. The inmates must still report to the DMV to obtain a driver license following their release.

Records Processed	April	May	June	Quarterly Total	Average
DMV - California Identification Card	174	127	144	445	148
RECORDS – Birth Certificate	195	129	138	462	154
Totals	369	356	282	907	302

Records Issued	April	May	June	Quarterly Total	Average
DMV - California Identification Card	45	111	149	305	102
RECORDS – Birth Certificate	106	187	98	391	130
Totals	151	298	247	696	232