



---

# CUSTODY DIVISION POPULATION QUARTERLY REPORT

*October - December 2019*

Los Angeles County Sheriff's Department

---

*Alex Villanueva, Sheriff*

---

# TABLE OF CONTENTS

|   |    |
|---|----|
| Executive Summary.....                                      | 3  |
| 1. Population Trends.....                                   | 4  |
| LA County Inmate Population Graph                           |    |
| Monthly ADIP Trend  |    |
| Arrests, Bookings and Releases                              |    |
| Release Practices   |    |
| Homeless and Veteran  |    |
| 2. Facilities Overview.....                                 | 10 |
| Rated Capacities - Board of State and Community Corrections |    |
| Jail Housing Facilities                                     |    |
| Men's Central Jail  |    |
| Twin Towers Correctional Facility                           |    |
| Century Regional Detention Center                           |    |
| Pitchess Detention Center – East                            |    |
| Pitchess Detention Center – North                           |    |
| Pitchess Detention Center – South                           |    |
| North County Correctional Facility                          |    |
| 3. Population Overview.....                                 | 17 |
| Inmate Population Demographics                              |    |
| Inmate Population Offender Age Groups                       |    |
| Jail Population by Security Level                           |    |
| Inmate Population Breakdown                                 |    |
| Crime Classification Statistics                             |    |
| Inmates with M7   |    |
| Pre-Trial Population  |    |
| Pre-Trial Misdemeanor Population                            |    |
| Pre-Trial Bail Holds  |    |
| Mental Health Inmate Population                             |    |
| Misdemeanor Incompetent to Stand Trial (MIST)               |    |
| Americans with Disabilities Act (ADA)                       |    |
| Medical Housing   |    |
| 4. In-Custody Programs.....                                 | 31 |
| Credit Earnings   |    |
| Conservation Work Program (CWP)                             |    |
| Education Based Incarceration Program (EBI-Milestone)       |    |
| Fire Camp Training Program                                  |    |
| CDCR Fire Camp Program                                      |    |
| Back on Track (BOT)   |    |
| In-Custody S.T.A.R.T Program                                |    |

|  |    |
|--|----|
| 5. Alternatives to Custody Programs.....                     | 35 |
| Community Transition Unit (CTU)                              |    |
| Substance Abuse Treatment and Reentry Transition (S.T.A.R.T) |    |
| Female Programs  |    |
| Veteran’s Administration (VA)                                |    |
| Transitional Case Management Program (TCM)                   |    |
| Tarzana Treatment Center DMH/SUD Program                     |    |
| Mental Health Diversion – Normandie Village/Gateway          |    |
| Community Based Alternatives to Custody (CBAC)               |    |
| LA County ATC Inmate Population Graph                        |    |
| 6. Re-Entry Assistance.....                                  | 40 |
| Community Re-Entry and Resource Center (CRRC)                |    |
| CTU Coordinated Releases to Various Programs                 |    |
| CTU Vital Records  |    |

## EXECUTIVE SUMMARY

The Los Angeles County Sheriff's Department (LASD) is committed to maintaining a secure and constitutional jail system. As part of this effort, a periodic report is essential to better understand and quantify population trends. This ***Custody Division Population Quarterly Report*** summarizes data collected during the Fourth Quarter of 2019, and is produced by the Population Management Bureau (PMB) Analysis Unit.

The average total inmate population during the fourth quarter of 2019 was 17,445. This number includes the 17,203 average daily inmate population (ADIP) and the 242 average number of inmates that participated in community-based alternatives to custody programs. This is higher than the fourth quarter of 2018 average of 16,889.

Conditions of over-crowding remained this quarter and necessitated the continued use of percentage release to manage the inmate population. Inmates serving traditional county sentence completed 10 percent of their court ordered sentences. Inmates who were serving sentences for designated serious and/or violent offenses (M7 charges) and those sentenced under 1170 PC (AB109) continued to serve 100 percent of their sentences, minus any time credits earned. For further information regarding this quarter's percentage release criteria see page 8 of this report.

In late-March 2018, the Department extended the release provision under penal code section 4024.1, which grants the Sheriff the authority to accelerate the release, discharge, or expiration of sentence date of sentenced inmates up to a maximum of 30 days or 10 percent off their term of sentence. Prior to March 2018, the Department utilized this section by allowing inmates five (5) additional days off their sentence, due to the critical need for space, it was extended to the maximum 30 days.

The Traditional County Sentenced (TCS) population this quarter was approximately 1,463, slightly higher than last quarter (1,462), and the number of inmates sentenced under 1170 PC was approximately 2,361, which is slightly more than last quarter's (2,330) total.

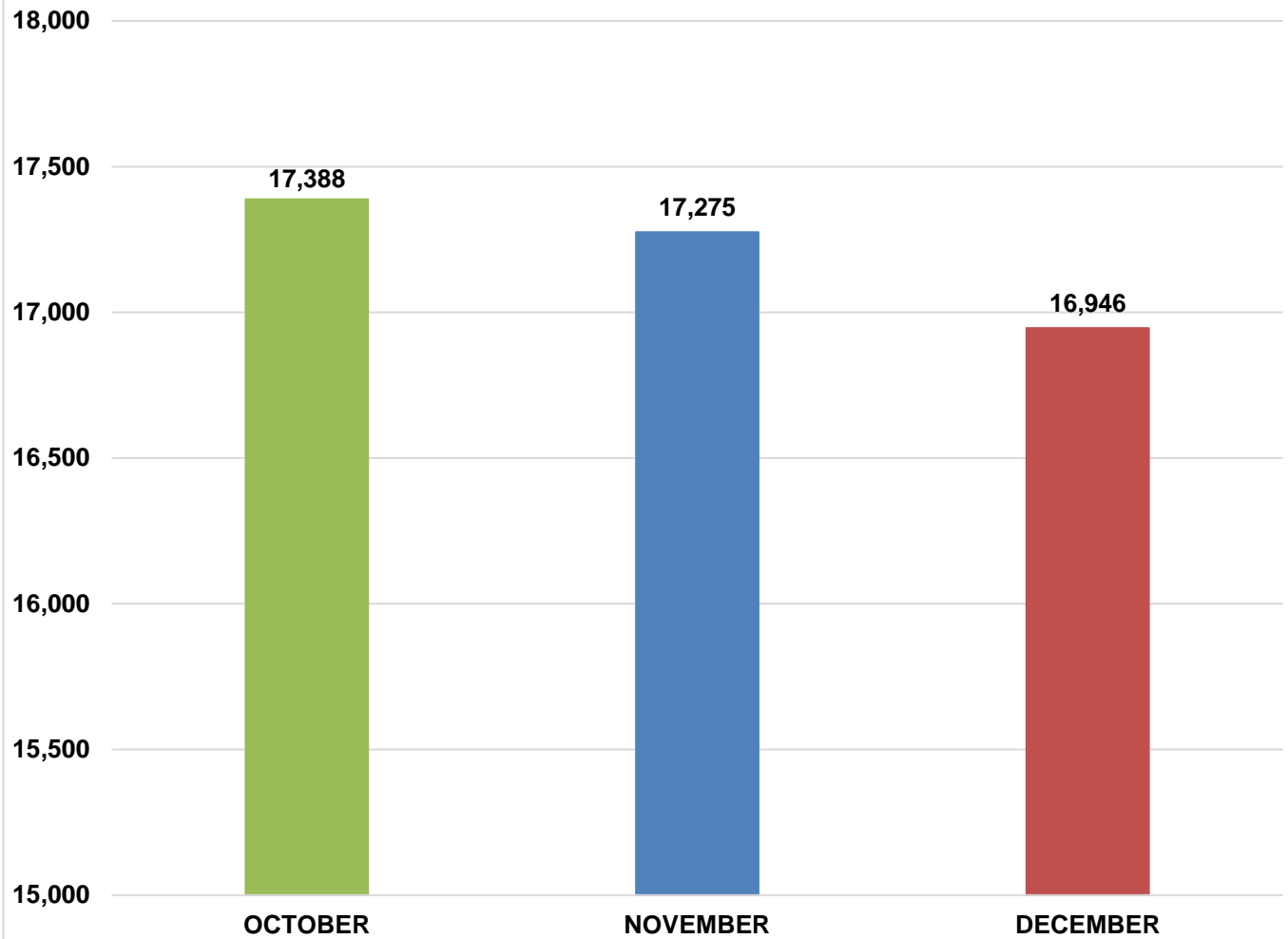
The mental health population increased slightly to 6,015 (from 5,785 last quarter) and comprised 35 percent of the total inmate population. During the fourth quarter of 2018, the mental health population was 5,272 and comprised 32 percent of the total inmate population. The continuing increase in the mental health population has necessitated the conversion of several general population housing units into mental health housing.

*Information encompassed in this report/document depicts data related to a specific date and time. Data may differ based on numerous factors related to an inmate's status, disposition, facility, etc. Information may differ based on systems queried, archived information, date/time parameters or numerous other factors. Information in disparate reports should not be combined as data sets may be inconsistent in queries and responses.*

# POPULATION TRENDS

## LA COUNTY INMATE POPULATION

### Fourth Quarter 2019 Los Angeles County Overall Inmate Count

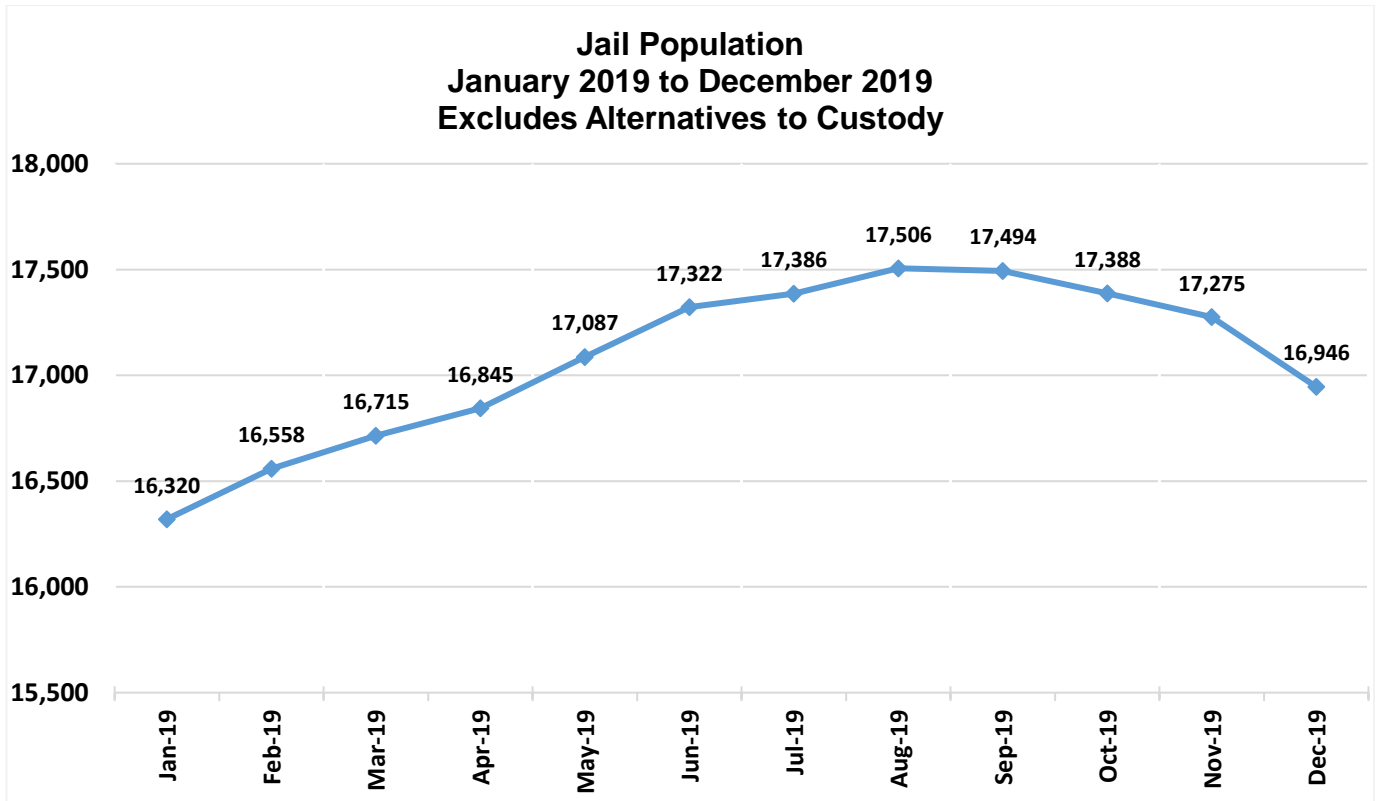


**2019 Quarterly Overall  
Division ADIP**

**17,203**

*Quarterly Division ADIP reflects all inmates processing into IRC, excludes ATC.*

## MONTHLY ADIP TREND



| Nine Year ADIP Comparison |        |                       |
|---------------------------|--------|-----------------------|
| Year                      | ADIP   | Notes                 |
| 2011                      | 15,014 | (Oct - AB109 enacted) |
| 2012                      | 18,043 |                       |
| 2013                      | 18,687 |                       |
| 2014                      | 18,680 | (Nov - Prop 47)       |
| 2015                      | 17,049 |                       |
| 2016                      | 16,613 |                       |
| 2017                      | 17,024 |                       |
| 2018                      | 16,910 |                       |
| 2019                      | 17,070 |                       |

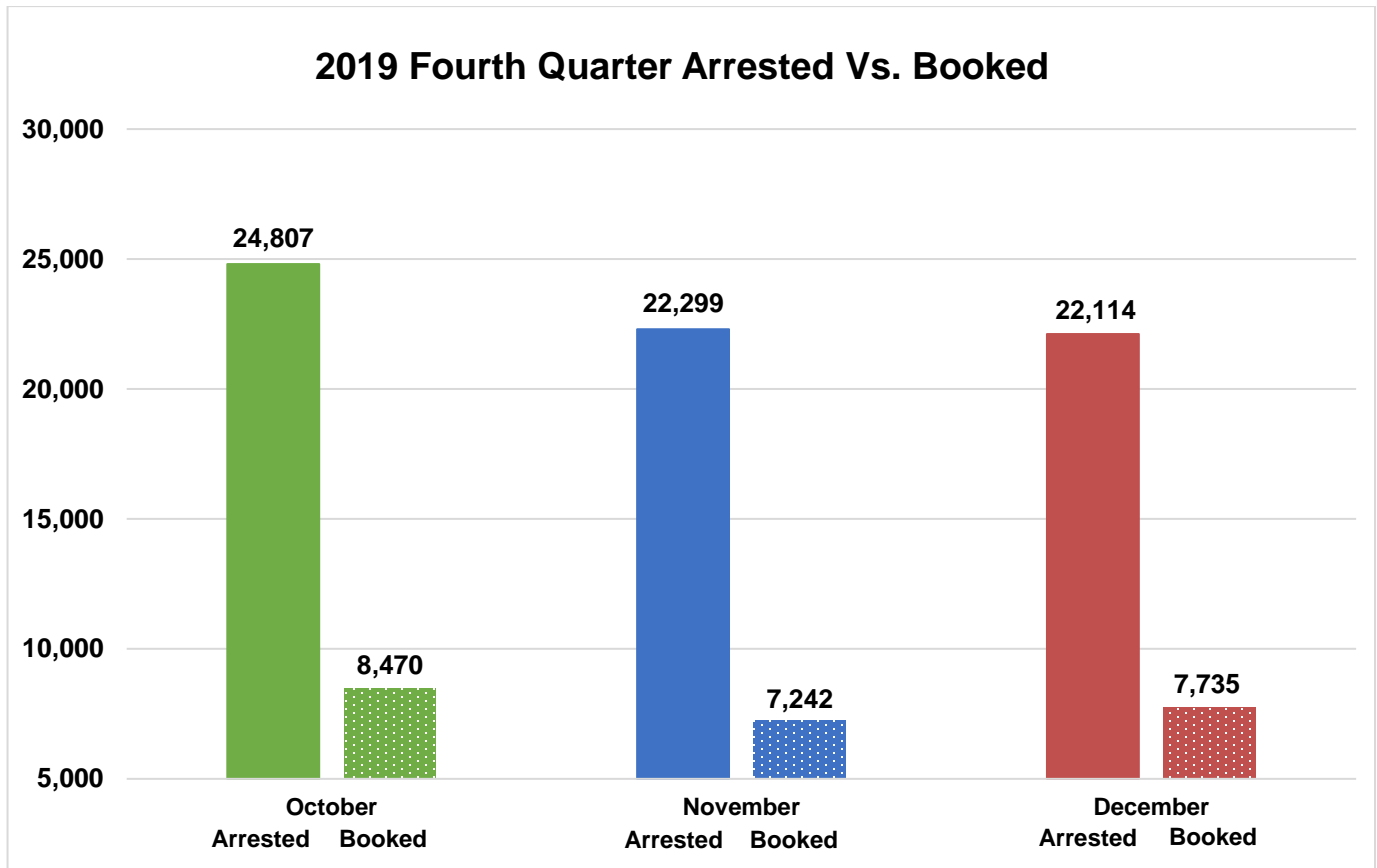
## FOURTH QUARTER 2019 - ARREST AND BOOKING STATS

Arrest activity decreased by 14% over last quarter (80,600). The number of inmates booked into the LA County jail this quarter was decreased by 15% versus last quarter's number of inmates booked into custody (27,446).

|                                    | October       |            | November      |            | December      |            | Quarterly Total | Quarterly Average | Quarterly % |
|------------------------------------|---------------|------------|---------------|------------|---------------|------------|-----------------|-------------------|-------------|
|                                    | Monthly Total | %          | Monthly Total | %          | Monthly Total | %          |                 |                   |             |
| <b>Felony</b>                      | 9,001         | 36%        | 7,888         | 35%        | 8,115         | 37%        | 25,004          | 8,335             | 36%         |
| <b>Misdemeanor</b>                 | 15,164        | 61%        | 13,882        | 62%        | 13,437        | 61%        | 42,483          | 14,161            | 61%         |
| <b>Other</b>                       | 642           | 3%         | 529           | 2%         | 562           | 3%         | 1,733           | 578               | 3%          |
| <b>Total Arrested</b>              | <b>24,807</b> |            | <b>22,299</b> |            | <b>22,114</b> |            | <b>69,220</b>   | <b>23,073</b>     |             |
| <b>Total Booked into LA County</b> | <b>8,470</b>  | <b>34%</b> | <b>7,242</b>  | <b>32%</b> | <b>7,735</b>  | <b>35%</b> | <b>23,447</b>   | <b>7,816</b>      | <b>33%</b>  |

## FOURTH QUARTER 2019 - ARRESTS VS. BOOKINGS

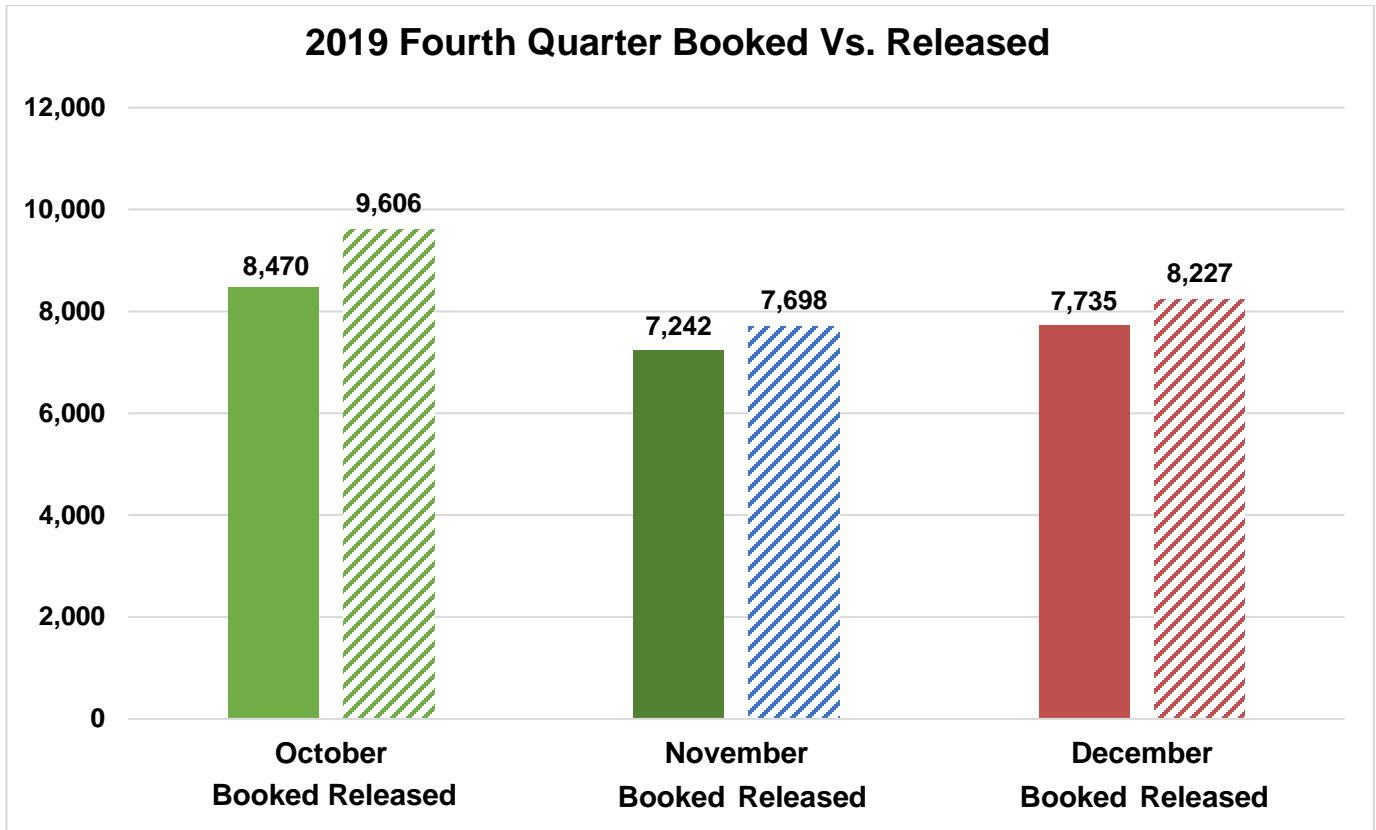
The graph below compares the average Arrests and Bookings for this quarter.





## FOURTH QUARTER 2019 – BOOKINGS VS. RELEASES

LASD averaged approximately 8,510 releases this quarter. That is a decrease of approximately 12% of releases compared to last quarter (average of 9,688).



## LA COUNTY JAIL RELEASE PRACTICES

Due to conditions of overcrowding, during this quarter traditional county sentenced inmates were subject to early release under the following conditions.

| Month    | Release Criteria Male | Release Criteria Female | *M7 Release Criteria | **Short Sentence Male | **Short Sentence Female |
|----------|-----------------------|-------------------------|----------------------|-----------------------|-------------------------|
| October  | 10%                   | 10%                     | 100%                 | 180 days              | 180 days                |
| November | 10%                   | 10%                     | 100%                 | 180 days              | 180 days                |
| December | 10%                   | 10%                     | 100%                 | 180 days              | 180 days                |

\*Inmates classified as M7 have sentences for designated serious and/or violent offenses or have notoriety in the community, which requires their record jacket to go through extra 'security' checks upon release from Sheriff's custody.

\*\*Shorts are inmates sentenced to a term in county jail, which after all legal credits are awarded and the current jail percentage time is considered, are immediately released from Sheriff's custody after processing from court.

## HOMELESS AND VETERAN

### Homeless Population

The chart below provides an average breakdown of the inmate population who stated they were homeless by gender, major race and age category, which is 29% of the total population.\*

|                       | October      | November     | December     | AVERAGE      |
|-----------------------|--------------|--------------|--------------|--------------|
| <b>Male</b>           | 4,312        | 4,306        | 4,207        | 4,275        |
| <b>Female</b>         | 663          | 712          | 725          | 700          |
| <b>Total</b>          | <b>4,975</b> | <b>5,018</b> | <b>4,932</b> | <b>4,975</b> |
|                       | October      | November     | December     | AVERAGE      |
| <b>Hispanic</b>       | 2,334        | 2,341        | 2,338        | 2,338        |
| <b>Black</b>          | 1,602        | 1,579        | 1,515        | 1,565        |
| <b>White</b>          | 895          | 944          | 919          | 919          |
| <b>Other</b>          | 144          | 154          | 160          | 153          |
| <b>Total</b>          | <b>4,975</b> | <b>5,018</b> | <b>4,932</b> | <b>4,975</b> |
|                       | October      | November     | December     | AVERAGE      |
| <b>18 to 25</b>       | 877          | 907          | 902          | 895          |
| <b>26 to 34</b>       | 1,674        | 1,707        | 1,667        | 1,683        |
| <b>35 to 39</b>       | 730          | 717          | 710          | 719          |
| <b>40 to 44</b>       | 517          | 530          | 532          | 526          |
| <b>45 &amp; Older</b> | 1,177        | 1,157        | 1,121        | 1,152        |
| <b>Total</b>          | <b>4,975</b> | <b>5,018</b> | <b>4,932</b> | <b>4,975</b> |

\*Effective September 2018, homeless data is collected from ATAR.

\*\*Information contained is based on a snapshot of the daily inmate population purge every Tuesday.

### Veteran Population

The chart below provides an average breakdown of the inmate population who stated they have served in the United State Military by gender, major race and age category, which is 2% of the total population.\*

|                       | October    | November   | December   | AVERAGE    |
|-----------------------|------------|------------|------------|------------|
| <b>Male</b>           | 383        | 390        | 371        | 381        |
| <b>Female</b>         | 8          | 12         | 14         | 11         |
| <b>Total</b>          | <b>391</b> | <b>402</b> | <b>385</b> | <b>392</b> |
|                       | October    | November   | December   | AVERAGE    |
| <b>Hispanic</b>       | 108        | 103        | 102        | 104        |
| <b>Black</b>          | 149        | 148        | 138        | 145        |
| <b>White</b>          | 114        | 129        | 124        | 122        |
| <b>Other</b>          | 20         | 22         | 21         | 21         |
| <b>Total</b>          | <b>391</b> | <b>402</b> | <b>385</b> | <b>392</b> |
|                       | October    | November   | December   | AVERAGE    |
| <b>18 to 25</b>       | 23         | 26         | 24         | 24         |
| <b>26 to 34</b>       | 83         | 83         | 86         | 84         |
| <b>35 to 39</b>       | 58         | 58         | 50         | 55         |
| <b>40 to 44</b>       | 43         | 49         | 50         | 47         |
| <b>45 &amp; Older</b> | 184        | 186        | 175        | 182        |
| <b>Total</b>          | <b>391</b> | <b>402</b> | <b>385</b> | <b>392</b> |

\*These are numbers based upon self-identification and have not been confirmed by the Veterans Administration.

\*\*Effective September 2018, veteran data is collected from ATAR.

\*\*\*Information contained is based on a snapshot of the daily inmate population purge every Tuesday.

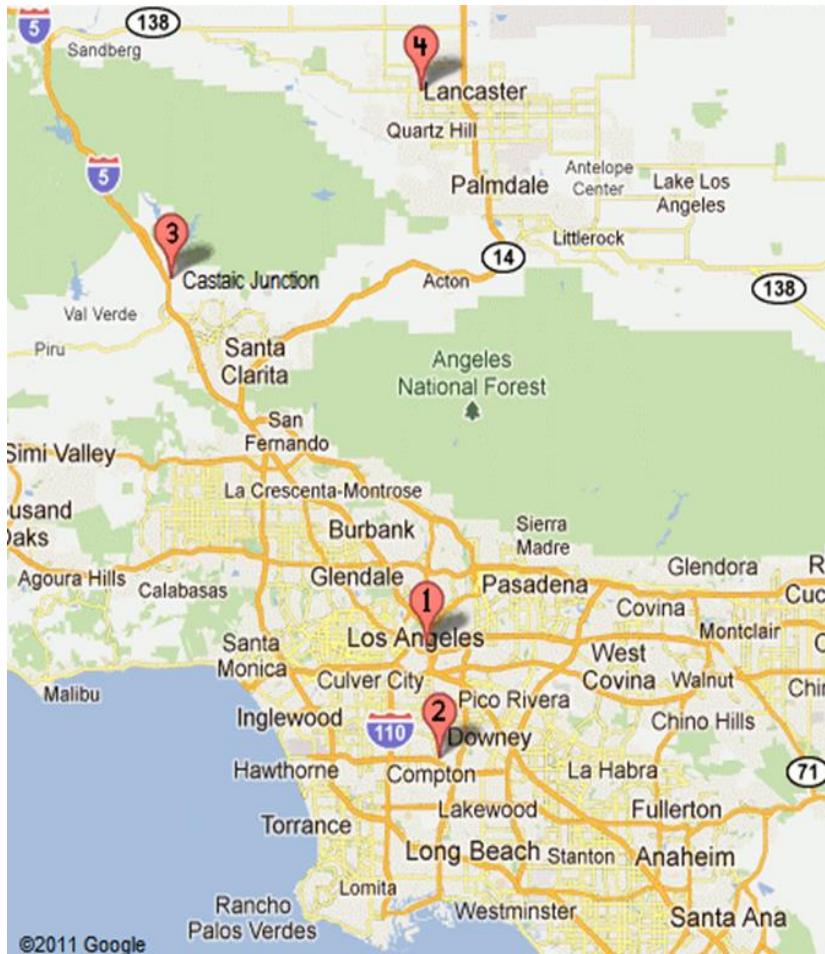
# **FACILITIES OVERVIEW**

## RATED CAPACITY

The Board of State and Community Corrections (BSCC) is a government body which recommends capacity limits for county jails. BSCC conducts biennial jail inspections; LASD was rated in August 2018.

| <b>Board of State and Community Corrections</b> |                                |  |                                   |   |                             |
|---|--------------------------------|--|-----------------------------------|---|-----------------------------|
| <b>LASD Custody Facilities</b>                  |                                | <b>BSCC Rated Capacity</b>             | <b>Quarterly Facility ADIP</b>    | <b>Above BSCC Rated Capacity</b>                          | <b>% Over BSCC Capacity</b> |
| Men's Central Jail                              |                                | 3,512                                  | 4,540                             | 1,028   | 29%                         |
| Twin Towers Correctional Facility               |                                | 2,432                                  | 3,353                             | 921   | 38%                         |
| Century Regional Detention Facility             |                                | 1,708                                  | 2,153                             | 445   | 26%                         |
| Pitchess Detention Center – East                |                                | 926                                    | 73                                | -853  | -92%                        |
| Pitchess Detention Center – North               |                                | 830                                    | 1,430                             | 600   | 72%                         |
| Pitchess Detention Center – South               |                                | 782                                    | 1,459                             | 677   | 87%                         |
| North County Correctional Facility              |                                | 2,214                                  | 3,909                             | 1,695   | 77%                         |
| <b>Total BSCC Rated Capacity*</b>               | <b>Quarterly Facility ADIP</b> | <b>Total Above BSCC Rated Capacity</b> | <b>Total % Over BSCC Capacity</b> | <b>Total % Over BSCC Capacity Excluding East Facility</b> |                             |
| 12,404  | 16,917                         | 4,513                                  | 36%                               | 47%   |                             |

\*Statistical data gathered from *Board of State and Community Corrections Inspection Report 8/2018*.



### LA County Jail Facilities

- 1**
- Men's Central Jail (MCJ)
- Twin Towers Correctional Facility (TCF)
- Los Angeles County Medical Center (LCMC)
- Correctional Treatment Center (CTC)
- Inmate Reception Center (IRC)
  
- 2**
- Century Regional Detention Facility (CRDF)
  
- 3**
- Pitchess Detention Center (PDC)
- PDC East Facility
- PDC North Facility
- PDC South Facility
- North County Correctional Facility (NCCF)
  
- 4**
- Mira Loma Detention Center (MLDC)

## JAIL HOUSING FACILITIES

| <b>MEN'S CENTRAL JAIL<br/>TOTAL INMATE POPULATION<br/>2019</b> |                |                 |                 |                              |                            |
|--|----------------|-----------------|-----------------|------------------------------|----------------------------|
| <b>Security Level</b>  | <b>October</b> | <b>November</b> | <b>December</b> | <b>Quarterly<br/>Average</b> | <b>% of<br/>Population</b> |
| Security Level Low 1-4   | 879            | 896             | 910             | <b>895</b>                   | <b>20%</b>                 |
| Security Level Medium 5-7                                      | 2,995          | 2,946           | 2,822           | <b>2,921</b>                 | <b>64%</b>                 |
| Security Level High 8-9  | 677            | 718             | 766             | <b>720</b>                   | <b>16%</b>                 |
| <b>FACILITY TOTAL</b>  | <b>4,551</b>   | <b>4,560</b>    | <b>4,498</b>    | <b>4,536</b>                 | <b>100%</b>                |
| <b>°SUB POPULATION HOUSED THROUGHOUT FACILITY</b>              |                |                 |                 |                              |                            |
| <b>Housing Type</b>  | <b>October</b> | <b>November</b> | <b>December</b> | <b>Quarterly<br/>Average</b> |                            |
| * Administratively Segregated Inmates (K-10)                   | 36             | 29              | 32              | <b>32</b>                    |                            |
| ** Restrictive Housing (K-17, K-18, K-19, K-20)                | 310            | 315             | 308             | <b>311</b>                   |                            |
| > Administratively Segregated Inmates (K-1)                    | 12             | 13              | 13              | <b>13</b>                    |                            |
| Americans with Disabilities Act (ADA)                          | 91             | 84              | 88              | <b>88</b>                    |                            |
| *** Discipline   | 25             | 24              | 26              | <b>25</b>                    |                            |
| General Population on Psychotropic Meds                        | 1,224          | 1,271           | 1,208           | <b>1,234</b>                 |                            |
| Inmate Workers   | 956            | 961             | 953             | <b>957</b>                   |                            |
| LGBT (K-6 G) Inmates   | 384            | 411             | 414             | <b>403</b>                   |                            |
| Medical/Clinic   | 427            | 438             | 425             | <b>430</b>                   |                            |
| ^ Other (K-6T/B/C)   | 205            | 200             | 171             | <b>192</b>                   |                            |
| Pro-Per  | 79             | 97              | 99              | <b>92</b>                    |                            |
| School Housing (EBI)   | 349            | 352             | 351             | <b>351</b>                   |                            |
| Sexually Violent Predators                                     | 4              | 1               | 1               | <b>2</b>                     |                            |
| Sex Crimes Against Children (K-6 Y) Inmates                    | 247            | 241             | 236             | <b>241</b>                   |                            |
| Developmentally Disabled                                       | 16             | 13              | 12              | <b>14</b>                    |                            |

*°Sub population housed throughout facility includes those who are classified with special housing needs and are included in the total inmate population. An inmate may belong to more than one subpopulation.*

*\*K-10: Administratively segregated for various reasons including danger to self or others.*

*\*\*K-17: Disruptive; K-18: Protective Custody; K-19: Major Disruptive; K-20: Highly Dangerous.*

*>K-1 Law Enforcement related in custody.*

*^ K-6T Contempt of court, K6B threatened by others, K-6C protective custody.*

*\*\*\* Majority of discipline inmates are now housed at TTCF.*

*\*\*\*\* Statistical data are averages gathered from Facility Count Sheet every Tuesday.*

| TWIN TOWERS CORRECTIONAL FACILITY<br>TOTAL INMATE POPULATION<br>2019 |              |              |              |                   |                 |
|--|--------------|--------------|--------------|-------------------|-----------------|
| Security Level   | October      | August       | September    | Quarterly Average | % of Population |
| Security Level Low 1-4   | 578          | 607          | 613          | 599               | 18%             |
| Security Level Medium 5-7  | 2,358        | 2,326        | 2,196        | 2,293             | 68%             |
| Security Level High 8-9  | 485          | 494          | 519          | 499               | 14%             |
| <b>Facility Total</b>  | <b>3,421</b> | <b>3,427</b> | <b>3,328</b> | <b>3,391</b>      | <b>100%</b>     |

| °SUB POPULATION HOUSED THROUGHOUT FACILITY   |         |          |          |                   |
|--|---------|----------|----------|-------------------|
| Housing Type   | October | November | December | Quarterly Average |
| * Administratively Segregated Inmates (K-10)   | 60      | 52       | 50       | 54                |
| ** Restrictive Housing (K-17, K-18, K-19, K-20)  | 95      | 99       | 101      | 98                |
| ^ Administratively Segregated Inmates (K-1)  | 3       | 2        | 2        | 2                 |
| *** Administratively Segregated Inmates (K-6B)   | 63      | 62       | 68       | 64                |
| Americans With Disabilities (ADA)  | 363     | 357      | 327      | 349               |
| Discipline   | 99      | 102      | 97       | 99                |
| Female Medical (CTC)   | 20      | 15       | 15       | 17                |
| General Population on Psychotropic Meds Security Level 1-4                                       | 54      | 59       | 56       | 56                |
| General Population on Psychotropic Meds Security Level 5-7                                       | 256     | 280      | 258      | 265               |
| General Population on Psychotropic Meds Security Level 8-9                                       | 72      | 69       | 66       | 69                |
| LGBT (K-6 G) Inmates   | 91      | 97       | 94       | 94                |
| School Housing (EBI)   | 421     | 416      | 410      | 416               |
| Medical (CTC)  | 99      | 115      | 101      | 105               |
| Mentally III – High Observation Housing (HOH)  | 1,040   | 1,042    | 1,011    | 1,031             |
| Mentally III – Moderate Observation / Service Area (MOH)   | 2,469   | 2,474    | 2,481    | 2,475             |
| Mentally III – Moderate Observation Housing (MOH)<br>School Housing (EBI)                        | 421     | 416      | 410      | 416               |
| Mentally III – Moderate Observation Housing (MOH)<br>Sex Crimes Against Children (K-6 Y) Inmates | 125     | 123      | 115      | 121               |

° Sub population housed throughout facility includes those who are classified with special housing needs and are included in the total inmate population. An inmate may belong to more than one subpopulation.

\*K-10: Administratively segregated for various reasons including danger to self or others.

\*\*K-17: Disruptive; K-18: Protective Custody; K-19: Major Disruptive; K-20: Highly Dangerous.

\*\*\*K-6B: Administratively segregated are at risk of assault in GP housing.

^K-1: Related to Law Enforcement-segregated from general population for safety reasons.

\*\*\*\* Statistical data are averages gathered from Facility Count Sheet every Tuesday.

**CENTURY REGIONAL DETENTION CENTER  
TOTAL INMATE POPULATION  
2019**

| <b>Security Level</b>     | <b>October</b> | <b>November</b> | <b>December</b> | <b>Quarterly Average</b> | <b>% of Population</b> |
|---------------------------|----------------|-----------------|-----------------|--------------------------|------------------------|
| Security Level Low 1-4    | 629            | 669             | 708             | <b>669</b>               | <b>32%</b>             |
| Security Level Medium 5-7 | 1,272          | 1,265           | 1,229           | <b>1,255</b>             | <b>59%</b>             |
| Security Level High 8-9   | 201            | 186             | 175             | <b>187</b>               | <b>9%</b>              |
| <b>Facility Total</b>     | <b>2,102</b>   | <b>2,120</b>    | <b>2,112</b>    | <b>2,111</b>             | <b>100%</b>            |

**°SUB POPULATION HOUSED THROUGHOUT FACILITY**

| <b>Housing Type</b>                                      | <b>October</b> | <b>November</b> | <b>December</b> | <b>Quarterly Average</b> |
|--|----------------|-----------------|-----------------|--------------------------|
| Administratively Segregated Inmates (K-10)               | 23             | 24              | 23              | <b>23</b>                |
| ** Restrictive Housing (K-17, K-18, K-19, K-20)          | 22             | 26              | 26              | <b>25</b>                |
| Pregnant (K-8)   | 39             | 42              | 36              | <b>39</b>                |
| Discipline   | 27             | 29              | 28              | <b>28</b>                |
| Inmate Workers   | 328            | 352             | 340             | <b>340</b>               |
| Medical/Clinic   | 10             | 10              | 9               | <b>10</b>                |
| Mentally III – High Observation Housing (HOH)            | 351            | 352             | 355             | <b>353</b>               |
| Mentally III – Moderate Observation / Service Area (MOH) | 386            | 400             | 385             | <b>390</b>               |
| Other (K-6 B)  | 3              | 2               | 2               | <b>2</b>                 |
| School Housing (EBI)                                     | 493            | 476             | 491             | <b>487</b>               |
| Sex Crimes Against Children (K-6 Y) Inmates              | 8              | 8               | 8               | <b>8</b>                 |

*°Sub population housed throughout facility includes those who are classified with special housing needs and are included in the total inmate population.*

*An inmate may belong to more than one subpopulation.*

*^K-10-Administratively segregated for various reasons including danger to self or others.*

*\*\*K-17: Disruptive; K-18: Protective Custody; K-19: Major Disruptive; K-20: Highly Dangerous.*

*\*\*\* Statistical data are averages gathered from Facility Count Sheet every Tuesday.*

| <b>PITCHESS DETENTION CENTER – EAST FACILITY<br/>TOTAL INMATE POPULATION<br/>2019</b> |                |                 |                 |                          |                        |
|---|----------------|-----------------|-----------------|--------------------------|------------------------|
| <b>Security Level</b>   | <b>October</b> | <b>November</b> | <b>December</b> | <b>Quarterly Average</b> | <b>% of Population</b> |
| Security Level Low 1-4  | 50             | 50              | 54              | 51                       | 70%                    |
| Security Level Medium 5-7   | 24             | 22              | 19              | 22                       | 30%                    |
| Security Level High 8-9   | 0              | 0               | 0               | 0                        | 0%                     |
| <b>Facility Total</b>   | <b>74</b>      | <b>72</b>       | <b>73</b>       | <b>73</b>                | <b>100%</b>            |
| <b>°SUB POPULATION HOUSED THROUGHOUT FACILITY</b>                                     |                |                 |                 |                          |                        |
| <b>HOUSING TYPE</b>   | <b>October</b> | <b>November</b> | <b>December</b> | <b>Quarterly Average</b> |                        |
| Fire Camp Security Levels 1-4   | 50             | 50              | 54              | 51                       |                        |
| Fire Camp Security Levels 5-7   | 24             | 22              | 19              | 22                       |                        |

*°Sub population housed throughout facility includes those who are classified with special housing needs and are included in the total inmate population. An inmate may belong to more than one subpopulation.*

*\*Statistical data are averages gathered from Facility Count Sheet every Tuesday.*

| <b>PITCHESS DETENTION CENTER – NORTH<br/>TOTAL INMATE POPULATION<br/>2019</b> |                |                 |                 |                          |                        |
|---|----------------|-----------------|-----------------|--------------------------|------------------------|
| <b>Security Level</b>   | <b>October</b> | <b>November</b> | <b>December</b> | <b>Quarterly Average</b> | <b>% of Population</b> |
| Security Level Low 1-4  | 214            | 222             | 255             | 230                      | 16%                    |
| Security Level Medium 5-7   | 1,157          | 1,184           | 1,137           | 1,159                    | 82%                    |
| Security Level High 8-9   | 40             | 35              | 22              | 33                       | 2%                     |
| <b>Facility Total</b>   | <b>1,411</b>   | <b>1,441</b>    | <b>1,414</b>    | <b>1,422</b>             | <b>100%</b>            |
| <b>°SUB POPULATION HOUSED THROUGHOUT FACILITY</b>                             |                |                 |                 |                          |                        |
| <b>HOUSING TYPE</b>   | <b>October</b> | <b>November</b> | <b>December</b> | <b>Quarterly Average</b> |                        |
| Discipline  | 23             | 20              | 18              | 20                       |                        |
| Inmate Workers  | 93             | 96              | 96              | 95                       |                        |
| School Housing GP (EBI) Security Levels 1-7                                   | 283            | 283             | 283             | 283                      |                        |
| School Housing (EBI) Security Levels 1-7 K6Y                                  | 92             | 90              | 86              | 89                       |                        |
| Sex Crimes Against Children Inmates (K-6 Y) Security Level 1-7                | 368            | 363             | 338             | 356                      |                        |
| Mentally Ill - Moderate Observation Housing (MOH)                             | 291            | 245             | 304             | 280                      |                        |

*°Sub population housed throughout facility includes those who are classified with special housing needs and are included in the total inmate population.*

*An inmate may belong to more than one subpopulation.*

*♦Inmates housed at North Facility for disciplinary reasons.*

*\*Statistical data are averages gathered from Facility Count Sheet every Tuesday.*



| <b>PITCHESS DETENTION CENTER - SOUTH<br/>TOTAL INMATE POPULATION<br/>2019</b> |                |                 |                 |                              |                            |
|---|----------------|-----------------|-----------------|------------------------------|----------------------------|
| <b>Security Level</b>   | <b>October</b> | <b>November</b> | <b>December</b> | <b>Quarterly<br/>Average</b> | <b>% of<br/>Population</b> |
| Security Level Low 1-4  | 490            | 502             | 555             | <b>516</b>                   | <b>35%</b>                 |
| Security Level Medium 5-7   | 971            | 956             | 905             | <b>944</b>                   | <b>65%</b>                 |
| Security Level High 8-9   | 0              | 0               | 0               | <b>0</b>                     | <b>0%</b>                  |
| <b>FACILITY TOTAL</b>   | <b>1,461</b>   | <b>1,458</b>    | <b>1,460</b>    | <b>1,460</b>                 | <b>100%</b>                |
| <b>°SUB POPULATION HOUSED THROUGHOUT FACILITY</b>                             |                |                 |                 |                              |                            |

| <b>Housing Type</b>                     | <b>October</b> | <b>November</b> | <b>December</b> | <b>Quarterly<br/>Average</b> |
|---|----------------|-----------------|-----------------|------------------------------|
| Back on Track Security Level 1-7        | 66             | 66              | 72              | <b>68</b>                    |
| School Housing (EBI) Security Level 1-7 | 436            | 348             | 399             | <b>394</b>                   |
| Inmate Workers Security Level 1-7       | 511            | 510             | 526             | <b>516</b>                   |

°Sub population housed throughout facility includes those who are classified with special housing needs and are included in the total inmate population. An inmate may belong to more than one subpopulation.

\*Statistical data are averages gathered from Facility Count Sheet every Tuesday.

| <b>NORTH COUNTY CORRECTIONAL FACILITY<br/>TOTAL INMATE POPULATION<br/>2019</b> |                |                 |                 |                              |                            |
|--|----------------|-----------------|-----------------|------------------------------|----------------------------|
| <b>Security Level</b>  | <b>October</b> | <b>November</b> | <b>December</b> | <b>Quarterly<br/>Average</b> | <b>% of<br/>Population</b> |
| Security Level Low 1-4   | 587            | 569             | 556             | <b>571</b>                   | <b>15%</b>                 |
| Security Level Medium 5-7  | 2,554          | 2,512           | 2,441           | <b>2,502</b>                 | <b>65%</b>                 |
| Security Level High 8-9  | 846            | 791             | 724             | <b>787</b>                   | <b>20%</b>                 |
| <b>Facility Total</b>  | <b>3,987</b>   | <b>3,872</b>    | <b>3,721</b>    | <b>3,860</b>                 | <b>100%</b>                |

| <b>°SUB POPULATION HOUSED THROUGHOUT FACILITY</b>                 |                |                 |                 |                              |  |
|---|----------------|-----------------|-----------------|------------------------------|--|
| <b>Housing Type</b>   | <b>October</b> | <b>November</b> | <b>December</b> | <b>Quarterly<br/>Average</b> |  |
| *Administratively Segregated Inmates (K-10)<br>Security Level 1-8 | 0              | 1               | 0               | <b>0</b>                     |  |
| Administratively Segregated Inmates (K6-B)<br>Security Level 1-8  | 155            | 157             | 157             | <b>156</b>                   |  |
| Discipline Security Level 1-7                                     | 151            | 154             | 143             | <b>149</b>                   |  |
| Inmate Workers Security Level 1-7                                 | 771            | 772             | 761             | <b>768</b>                   |  |
| Medical/Clinic Security Level 1-7                                 | 9              | 10              | 6               | <b>8</b>                     |  |
| School Housing (EBI) Security Level 1-8                           | 202            | 160             | 200             | <b>187</b>                   |  |
| Veterans  | 50             | 48              | 42              | <b>47</b>                    |  |

°Sub population housed throughout facility includes those who are classified with special housing needs and are included in the total inmate population.

An inmate may belong to more than one subpopulation.

\*K-10-Administratively segregated for various reasons including danger to self or others.

\*\*Statistical data are averages gathered from Facility Count Sheet every Tuesday.

# POPULATION OVERVIEW

## INMATE POPULATION DEMOGRAPHICS

Racial demographics this quarter indicate the three most populous racial groups within the LA County Jail for both male and female offenders are Hispanic (53%), Black (29%), and White (15%).

| COMBINED          | October 2019  |             | November 2019 |             | December 2019 |             | Quarterly Average | Quarterly % |
|-------------------|---------------|-------------|---------------|-------------|---------------|-------------|-------------------|-------------|
|                   | Race          | Population  | %             | Population  | %             | Population  |                   |             |
| Hispanic          | 9,051         | 53%         | 8,957         | 53%         | 8,793         | 53%         | 8,934             | 53%         |
| Black             | 5,090         | 29%         | 5,041         | 29%         | 4,917         | 29%         | 5,016             | 29%         |
| White             | 2,577         | 15%         | 2,604         | 15%         | 2,580         | 15%         | 2,587             | 15%         |
| All Others        | 569           | 3%          | 592           | 3%          | 583           | 3%          | 581               | 3%          |
| Chinese           | 47            | 0%          | 47            | 0%          | 47            | 0%          | 47                | 0%          |
| Filipino          | 31            | 0%          | 33            | 0%          | 30            | 0%          | 31                | 0%          |
| Pacific Islanders | 22            | 0%          | 23            | 0%          | 21            | 0%          | 22                | 0%          |
| Japanese          | 2             | 0%          | 2             | 0%          | 3             | 0%          | 2                 | 0%          |
| American Indian   | 5             | 0%          | 7             | 0%          | 8             | 0%          | 7                 | 0%          |
| <b>Total</b>      | <b>17,394</b> | <b>100%</b> | <b>17,306</b> | <b>100%</b> | <b>16,982</b> | <b>100%</b> | <b>17,227</b>     | <b>100%</b> |

| MALE              | October 2019  |             | November 2019 |             | December 2019 |             | Quarterly Average | Quarterly % |
|-------------------|---------------|-------------|---------------|-------------|---------------|-------------|-------------------|-------------|
|                   | Race          | Population  | %             | Population  | %             | Population  |                   |             |
| Hispanic          | 8,083         | 54%         | 8,002         | 53%         | 7,818         | 53%         | 7,968             | 53%         |
| Black             | 4,413         | 29%         | 4,367         | 29%         | 4,259         | 29%         | 4,346             | 29%         |
| White             | 2,111         | 14%         | 2,132         | 14%         | 2,127         | 15%         | 2,123             | 14%         |
| All Others        | 497           | 3%          | 513           | 4%          | 498           | 3%          | 503               | 4%          |
| Chinese           | 43            | 0%          | 43            | 0%          | 41            | 0%          | 42                | 0%          |
| Filipino          | 25            | 0%          | 26            | 0%          | 24            | 0%          | 25                | 0%          |
| Pacific Islanders | 20            | 0%          | 22            | 0%          | 19            | 0%          | 20                | 0%          |
| Japanese          | 1             | 0%          | 2             | 0%          | 3             | 0%          | 2                 | 0%          |
| American Indian   | 5             | 0%          | 7             | 0%          | 8             | 0%          | 7                 | 0%          |
| <b>Total</b>      | <b>15,198</b> | <b>100%</b> | <b>15,114</b> | <b>100%</b> | <b>14,797</b> | <b>100%</b> | <b>15,036</b>     | <b>100%</b> |

| FEMALE            | October 2019 |             | November 2019 |             | December 2019 |             | Quarterly Average | Quarterly % |
|-------------------|--------------|-------------|---------------|-------------|---------------|-------------|-------------------|-------------|
|                   | Race         | Population  | %             | Population  | %             | Population  |                   |             |
| Hispanic          | 968          | 44%         | 955           | 44%         | 975           | 45%         | 966               | 44%         |
| Black             | 677          | 31%         | 674           | 31%         | 658           | 30%         | 669               | 30%         |
| White             | 466          | 22%         | 472           | 21%         | 453           | 21%         | 464               | 22%         |
| All Others        | 72           | 3%          | 79            | 4%          | 85            | 4%          | 79                | 4%          |
| Chinese           | 4            | 0%          | 4             | 0%          | 6             | 0%          | 5                 | 0%          |
| Filipino          | 6            | 0%          | 7             | 0%          | 6             | 0%          | 6                 | 0%          |
| Pacific Islanders | 2            | 0%          | 1             | 0%          | 2             | 0%          | 2                 | 0%          |
| Japanese          | 1            | 0%          | 0             | 0%          | 0             | 0%          | 0                 | 0%          |
| American Indian   | 0            | 0%          | 0             | 0%          | 0             | 0%          | 0                 | 0%          |
| <b>Total</b>      | <b>2,196</b> | <b>100%</b> | <b>2,192</b>  | <b>100%</b> | <b>2,185</b>  | <b>100%</b> | <b>2,191</b>      | <b>100%</b> |

\*Statistical data are averages gathered from *Custody Division Daily Briefing Report* every Tuesday

CUSTODY DIVISION POPULATION QUARTERLY REPORT FOURTH QUARTER 2019

## INMATE POPULATION OFFENDER AGE GROUPS

The 26-34 year old cohort was the most frequently represented age group within the jail population this quarter, followed by the 18-25, as well as 45 years and older cohorts.

| COMBINED     | October 2019  |             | November 2019 |             | December 2019 |             | Quarterly Average | Quarterly % |
|--------------|---------------|-------------|---------------|-------------|---------------|-------------|-------------------|-------------|
|              | Age Group     | Population  | %             | Population  | %             | Population  |                   |             |
| 18 to 25     | 3,733         | 21%         | 3,699         | 21%         | 3,637         | 21%         | 3,689             | 21%         |
| 26 to 34     | 5,926         | 34%         | 5,925         | 34%         | 5,825         | 35%         | 5,892             | 34%         |
| 35 to 39     | 2,438         | 14%         | 2,420         | 14%         | 2,386         | 14%         | 2,415             | 14%         |
| 40 to 44     | 1,731         | 10%         | 1,727         | 10%         | 1,707         | 10%         | 1,722             | 10%         |
| 45 & Older   | 3,566         | 21%         | 3,535         | 21%         | 3,427         | 20%         | 3,509             | 21%         |
| <b>Total</b> | <b>17,394</b> | <b>100%</b> | <b>17,306</b> | <b>100%</b> | <b>16,982</b> | <b>100%</b> | <b>17,227</b>     | <b>100%</b> |

| MALE         | October 2019  |             | November 2019 |             | December 2019 |             | Quarterly Average | Quarterly % |
|--------------|---------------|-------------|---------------|-------------|---------------|-------------|-------------------|-------------|
|              | Age Group     | Population  | %             | Population  | %             | Population  |                   |             |
| 18 to 25     | 3,285         | 21%         | 3,243         | 21%         | 3,199         | 21%         | 3,242             | 21%         |
| 26 to 34     | 5,116         | 34%         | 5,140         | 34%         | 5,017         | 34%         | 5,091             | 34%         |
| 35 to 39     | 2,115         | 14%         | 2,097         | 14%         | 2,075         | 14%         | 2,096             | 14%         |
| 40 to 44     | 1,504         | 10%         | 1,492         | 10%         | 1,468         | 10%         | 1,488             | 10%         |
| 45 & Older   | 3,178         | 21%         | 3,142         | 21%         | 3,038         | 21%         | 3,119             | 21%         |
| <b>Total</b> | <b>15,198</b> | <b>100%</b> | <b>15,114</b> | <b>100%</b> | <b>14,797</b> | <b>100%</b> | <b>15,036</b>     | <b>100%</b> |

| FEMALE       | October 2019 |             | November 2019 |             | December 2019 |             | Quarterly Average | Quarterly % |
|--------------|--------------|-------------|---------------|-------------|---------------|-------------|-------------------|-------------|
|              | Age Group    | Population  | %             | Population  | %             | Population  |                   |             |
| 18 to 25     | 448          | 20%         | 456           | 21%         | 438           | 20%         | 447               | 20%         |
| 26 to 34     | 810          | 37%         | 785           | 36%         | 808           | 37%         | 801               | 37%         |
| 35 to 39     | 323          | 15%         | 323           | 15%         | 311           | 14%         | 319               | 14%         |
| 40 to 44     | 227          | 10%         | 235           | 10%         | 239           | 11%         | 234               | 11%         |
| 45 & Older   | 388          | 18%         | 393           | 18%         | 389           | 18%         | 390               | 18%         |
| <b>Total</b> | <b>2,196</b> | <b>100%</b> | <b>2,192</b>  | <b>100%</b> | <b>2,185</b>  | <b>100%</b> | <b>2,191</b>      | <b>100%</b> |

\*Statistical data are averages gathered from *Custody Division Daily Briefing Report* every Tuesday.

## JAIL POPULATION BY SECURITY LEVEL

LASD utilizes the Northpointe Classification system to assign security levels to inmates. The security levels guide where an inmate will be housed based on their individual risk for in-custody misconduct. Lower security housing areas offer more programming and privileges to better prepare the inmates for release. Higher security housing is more restricted and therefore limited in what programs are offered, due to potential risk of serious misconduct and/or escape by the high security level inmate population.

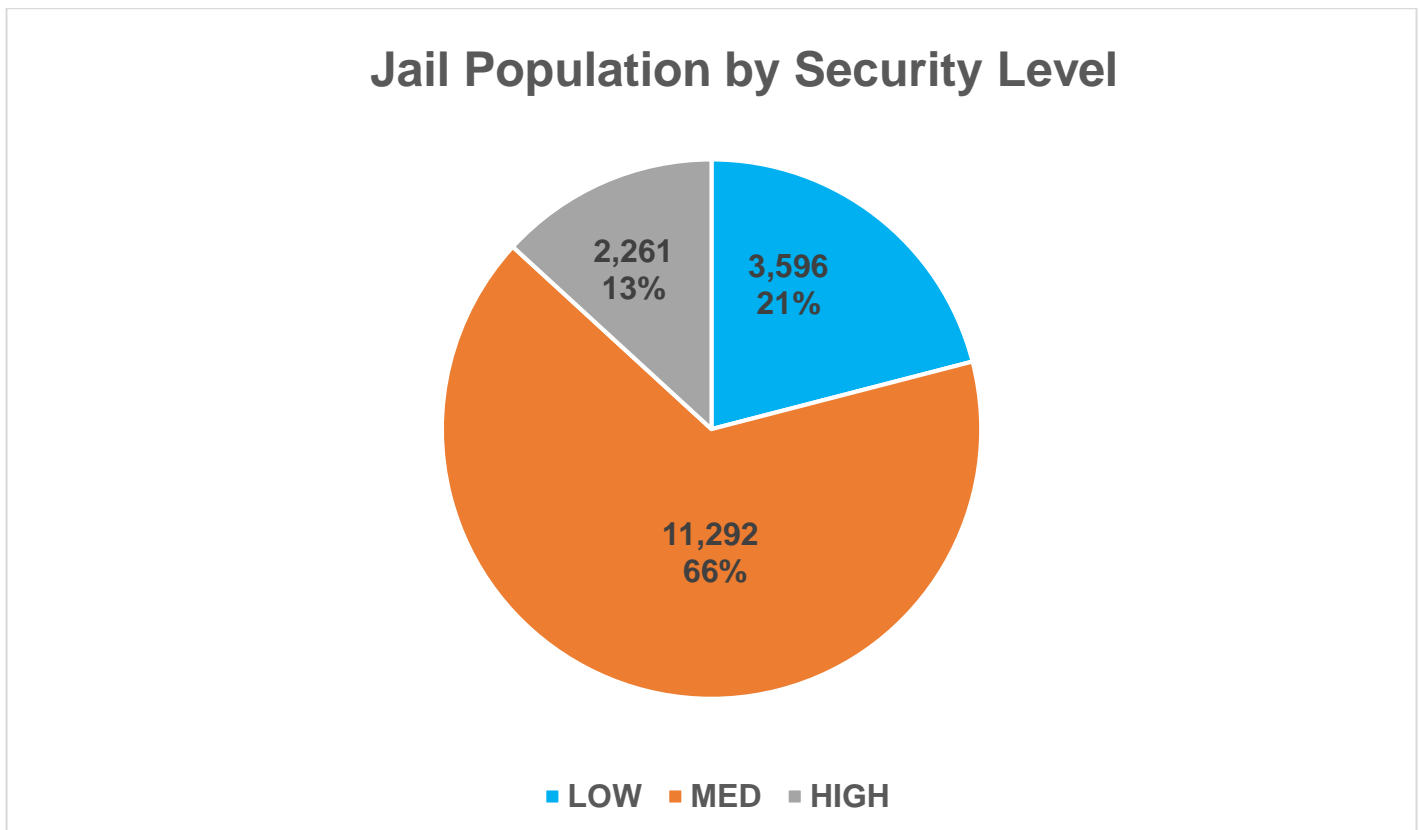
| <b>*Jail Population by Security Level</b> |              |               |              |               |
|---|--------------|---------------|--------------|---------------|
| <b>Month</b>                              | <b>Low</b>   | <b>Medium</b> | <b>High</b>  | <b>Total</b>  |
| <b>October</b>                            | 3,493        | 11,538        | 2,281        | 17,312        |
| <b>November</b>                           | 3,573        | 11,398        | 2,264        | 17,235        |
| <b>December</b>                           | 3,722        | 10,941        | 2,239        | 16,902        |
| <b>Average</b>                            | <b>3,596</b> | <b>11,292</b> | <b>2,261</b> | <b>17,149</b> |
| <b>Percent</b>                            | <b>21%</b>   | <b>66%</b>    | <b>13%</b>   | <b>100%</b>   |

\*K-10 (Ad-Seg) inmates are re-evaluated for reclassification of security level during the re-class process which occurs every 45 days.

\*\*This chart only includes inmates housed in LASD Type II facilities, does not include inmates housed in alternative custody beds.

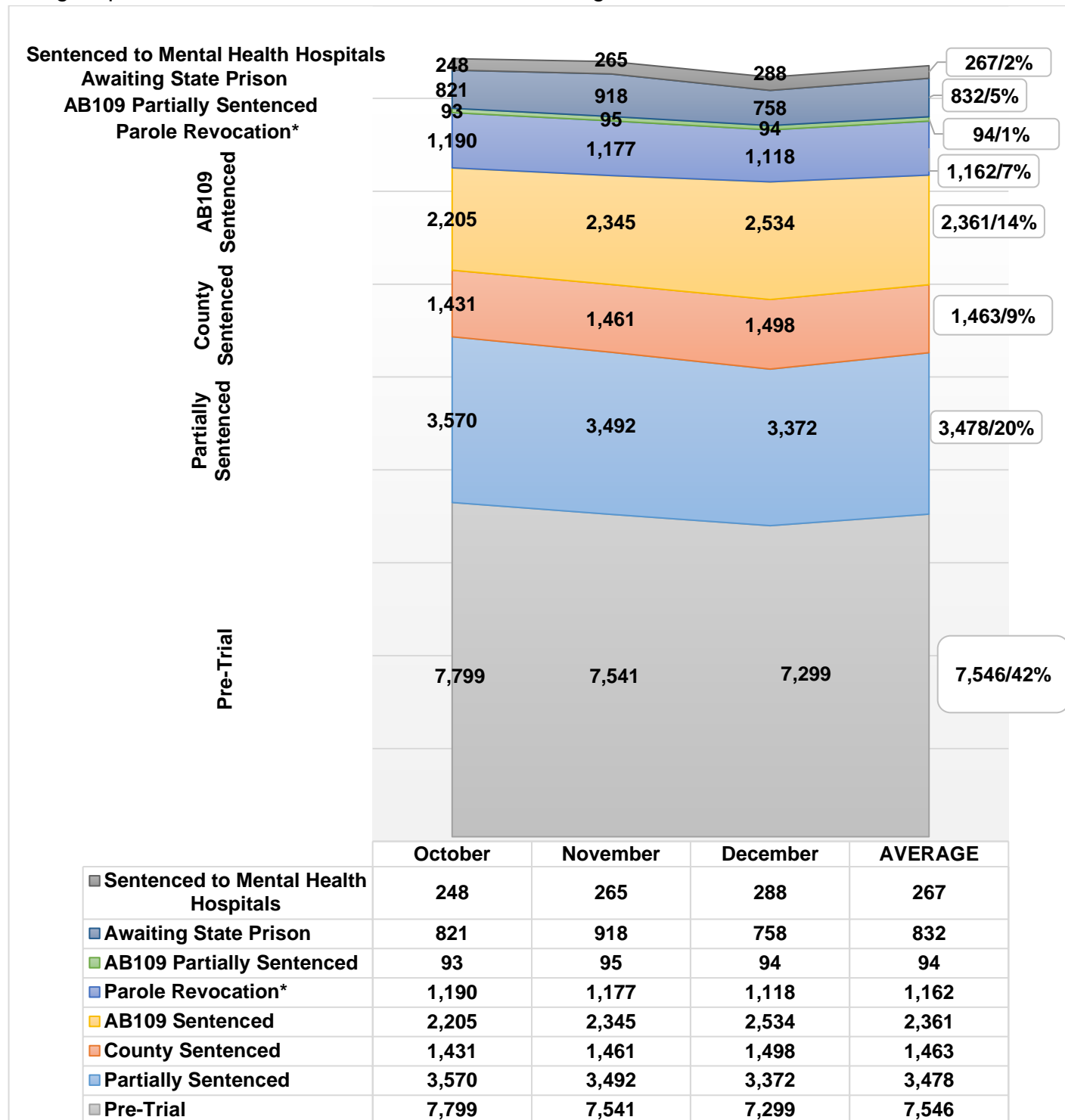
\*\*\*Information contained is based on a snapshot of the daily inmate population purge every Tuesday.

The pie graph below depicts the average number of inmates housed this quarter by security level. The percentage is calculated to the Facility ADIP for this quarter (17,149).



## INMATE POPULATION BREAKDOWN

The inmate population consists of various categories of inmates in broad groupings, including: pre-trial, traditional county sentenced, AB 109 sentenced, AB109 sentenced with additional charges, parole/revocation violators, and those awaiting transfer to State Prison.



\*Parole Revocation includes PRCS Revocation 3455, Flash Incarceration 3454 and Inmates with a 3056 hold.

\*\*It should be noted that an inmate who is sentence status 1 (often referred to as "pretrial") could be in trial, or even completed trial, but is just not fully sentenced. Most inmates in sentence status 1 will be pretrial.

## INMATE POPULATION BREAKDOWN CONTINUED

- **AWAITING STATE PRISON**

- During this quarter, an average of 832 inmates were awaiting transfer to state prison, some while pending trial on other cases.

- **AB109 PAROLE AND PROBATION VIOLATORS**

- An average of 1,162 AB109 inmates were in custody for violating their parole or probation.

- **AB109 SENTENCED**

- An average of 2,361 inmates were in custody, sentenced under AB109.

- **TRADITIONAL COUNTY SENTENCED INMATE POPULATION**

- The average daily count for the traditional county sentenced (TCS) population was 1,463 approximately 9% of the inmate population.

- **PRE-TRIAL INMATE POPULATION**

- During this quarter, there were approximately 23,447 new bookings into the LA County Jail. Forty-two percent (42%) of the average daily inmate population (17,203) was comprised of inmates who were pre-trial. Pre-trial inmates are those who have an open case and have not been sentenced by the courts.\*

*\*It should be noted that an inmate who is sentence status 1 (often referred to as "pretrial") could be in trial, or even completed trial, but is just not fully sentenced. Most inmates in sentence status 1 will be pretrial.*

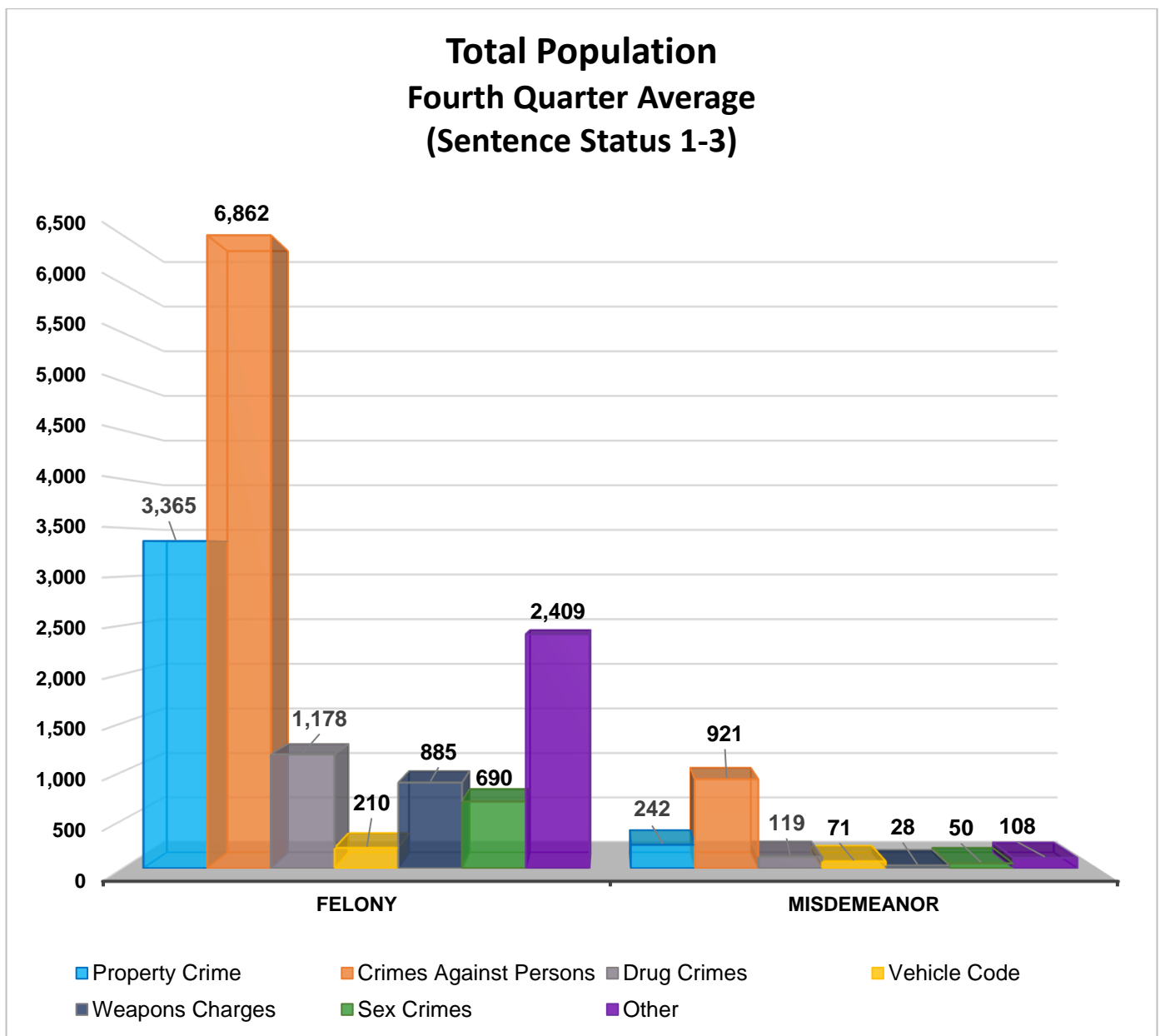
## CRIME CLASSIFICATION STATISTICS

The chart below provides an average breakdown for the entire inmate population, both sentenced and un-sentenced, by arrest category.

### Total Population (Sentence Status 1-3)

| Arrest Category    | Property Crimes | Crimes Against Persons | Drug Crimes | Vehicle Codes | Weapons Charges | Sex Crimes | Other | Total  | Percentage of the Population |
|--------------------|-----------------|------------------------|-------------|---------------|-----------------|------------|-------|--------|------------------------------|
| <b>Felony</b>      | 3,365           | 6,862                  | 1,178       | 210           | 885             | 690        | 2,409 | 15,599 | 91%                          |
| <b>Misdemeanor</b> | 242             | 921                    | 119         | 71            | 28              | 50         | 108   | 1,539  | 9%                           |
| <b>Total</b>       | 3,607           | 7,783                  | 1,297       | 281           | 913             | 740        | 2,517 | 17,138 | 100%                         |

*\*Information contained is based on a snapshot of the daily inmate population purge every Tuesday.*





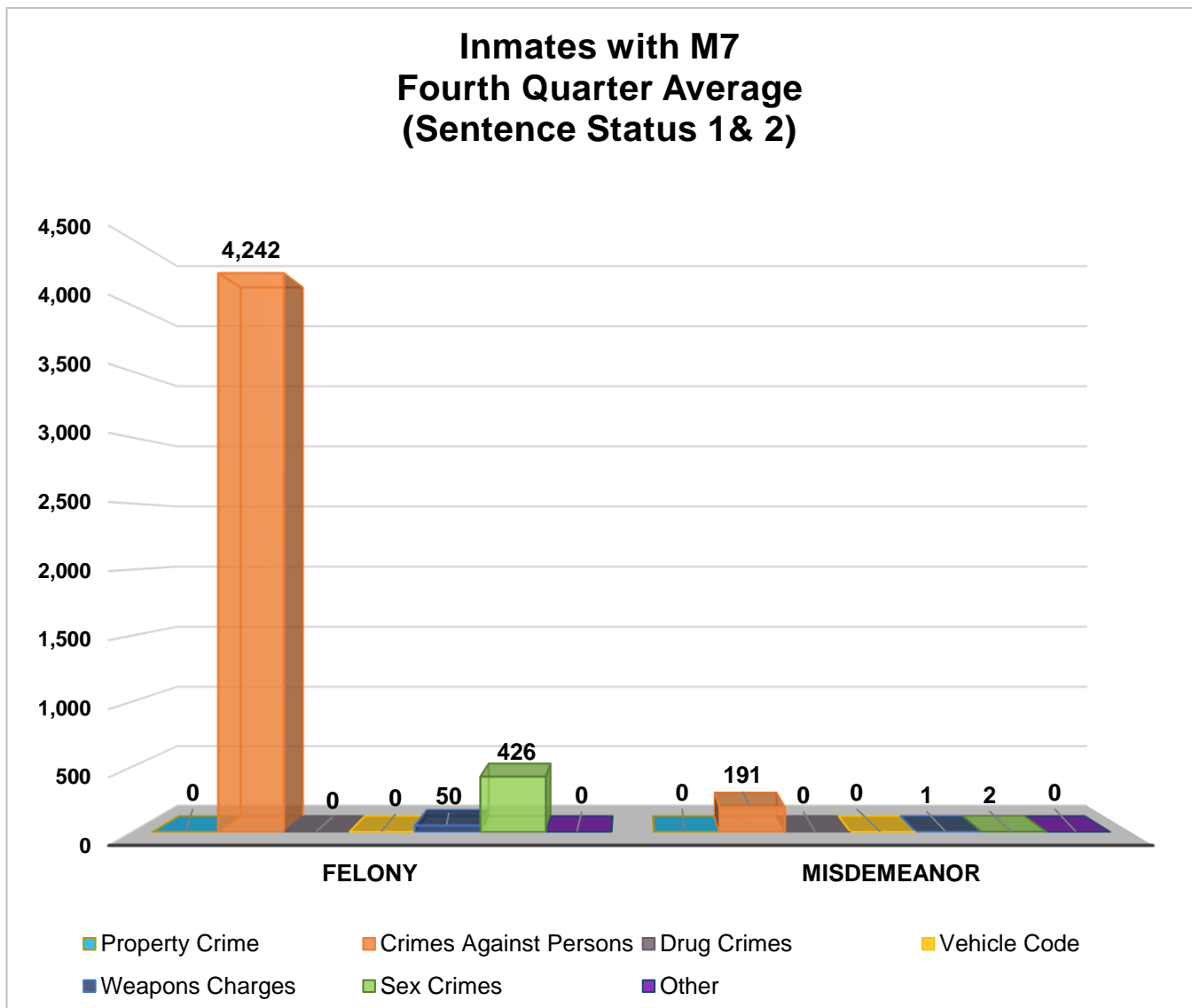
## INMATES WITH ASSAULTIVE/VIOLENT CHARGES (M7)

The chart below provides a breakdown for the inmate population with M7 charges, sentence status one and two, by arrest category.

Inmates with Assaultive/Violent Charges (M7) (Sentence Status 1 & 2)

| Arrest Category | Property Crimes | Crimes Against Persons | Drug Crimes | Vehicle Codes | Weapons Charges | Sex Crimes | Other    | Total        | Percentage of the pre-trial and partially sentenced Population |
|-----------------|-----------------|------------------------|-------------|---------------|-----------------|------------|----------|--------------|--|
| Felony          | 0               | 4,242                  | 0           | 0             | 50              | 426        | 0        | 4,718        | 96%  |
| Misdemeanor     | 0               | 191                    | 0           | 0             | 1               | 2          | 0        | 194          | 4%   |
| <b>Total</b>    | <b>0</b>        | <b>4,433</b>           | <b>0</b>    | <b>0</b>      | <b>51</b>       | <b>428</b> | <b>0</b> | <b>4,912</b> | <b>100%</b>  |

*\*Information contained is based on a snapshot of the daily inmate population purge every Tuesday.*

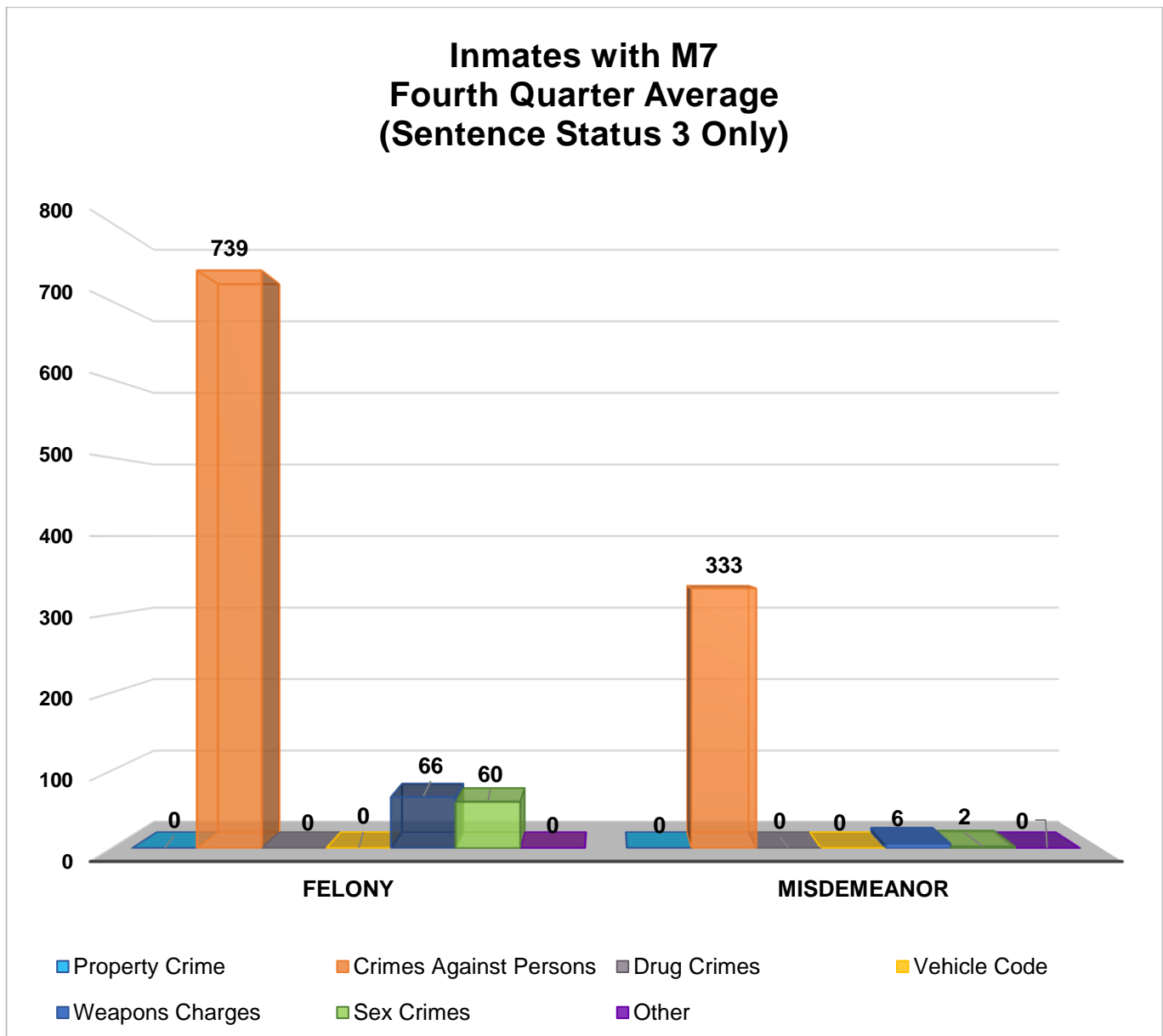


## INMATES WITH ASSAULTIVE/VIOLENT CHARGES (M7) CONTINUED

Inmates with Assaultive/Violent Charges (M7) (Sentence Status 3 Only)

| Arrest Category | Property Crime | Crimes Against Persons | Drug Crimes | Vehicle Code | Weapons Charges | Sex Crimes | Other | Total | Percentage of the Sentenced Population |
|-----------------|----------------|------------------------|-------------|--------------|-----------------|------------|-------|-------|--|
| Felony          | 0              | 739                    | 0           | 0            | 66              | 60         | 0     | 865   | 72%                                    |
| Misdemeanor     | 0              | 333                    | 0           | 0            | 6               | 2          | 0     | 341   | 28%                                    |
| <b>Total</b>    | 0              | 1,072                  | 0           | 0            | 72              | 62         | 0     | 1,206 | 100%                                   |

\*Information contained is based on a snapshot of the daily inmate population purge every Tuesday.



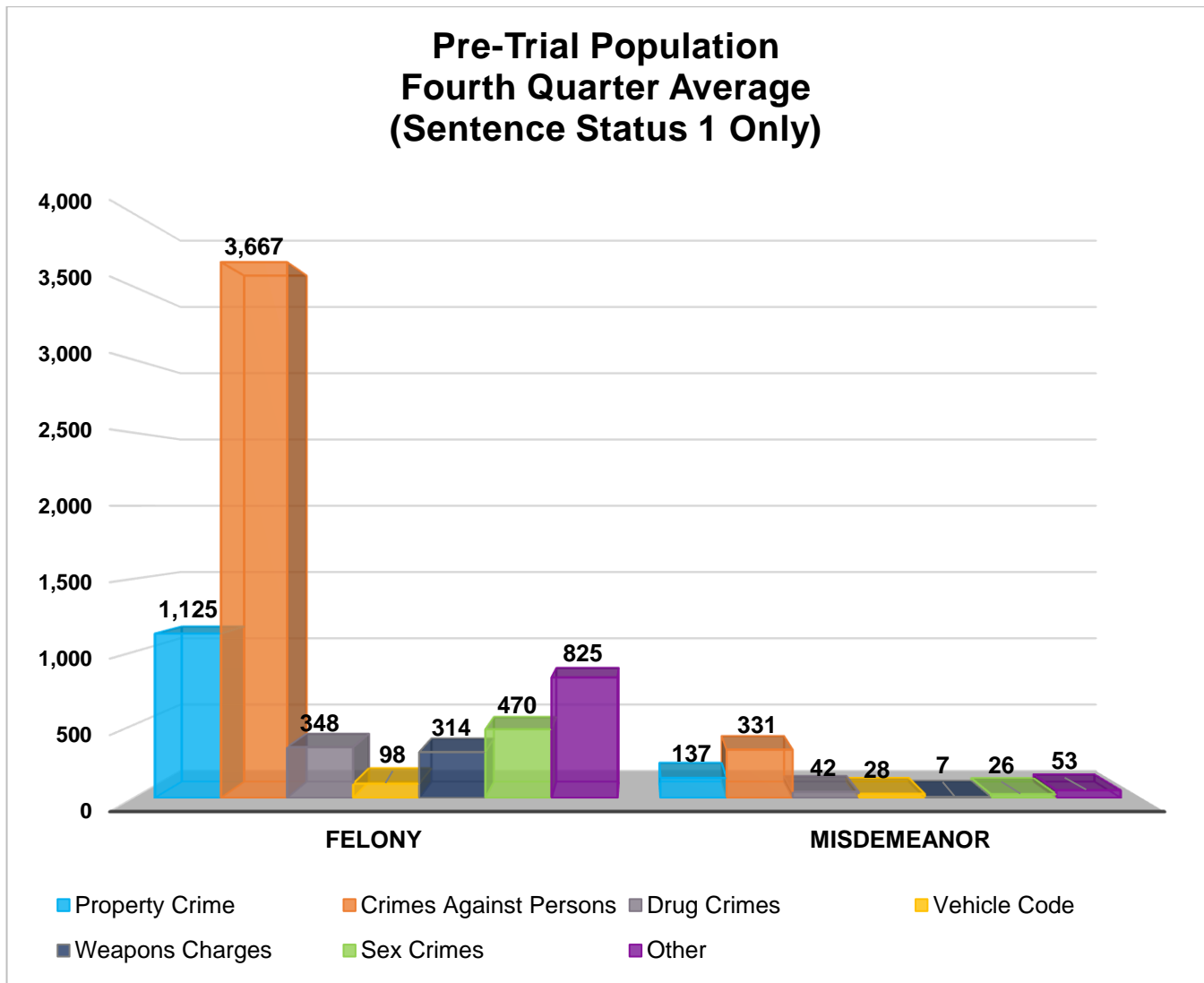
## PRE – TRIAL POPULATION

The chart below provides a breakdown for the pre-trial inmate population who are awaiting court disposition.

Pre-trial Population (Sentence Status 1 only)

| Arrest Category    | Property Crime | Crimes Against Persons | Drug Crimes | Vehicle Code | Weapons Charges | Sex Crimes | Other | Total | Percentage of the pre-trial Population |
|--------------------|----------------|------------------------|-------------|--------------|-----------------|------------|-------|-------|--|
| <b>Felony</b>      | 1,125          | 3,667                  | 348         | 98           | 314             | 470        | 825   | 6,847 | 92%                                    |
| <b>Misdemeanor</b> | 137            | 331                    | 42          | 28           | 7               | 26         | 53    | 624   | 8%                                     |
| <b>Total</b>       | 1,262          | 3,998                  | 390         | 126          | 321             | 496        | 878   | 7,471 | 100%                                   |

*\*Information contained is based on a snapshot of the daily inmate population purge every Tuesday.*



*\*It should be noted that an inmate who is sentence status 1 (often referred to as "pretrial") could be in trial, or even completed trial, but is just not fully sentenced. Most inmates in sentence status 1 will be pretrial.*

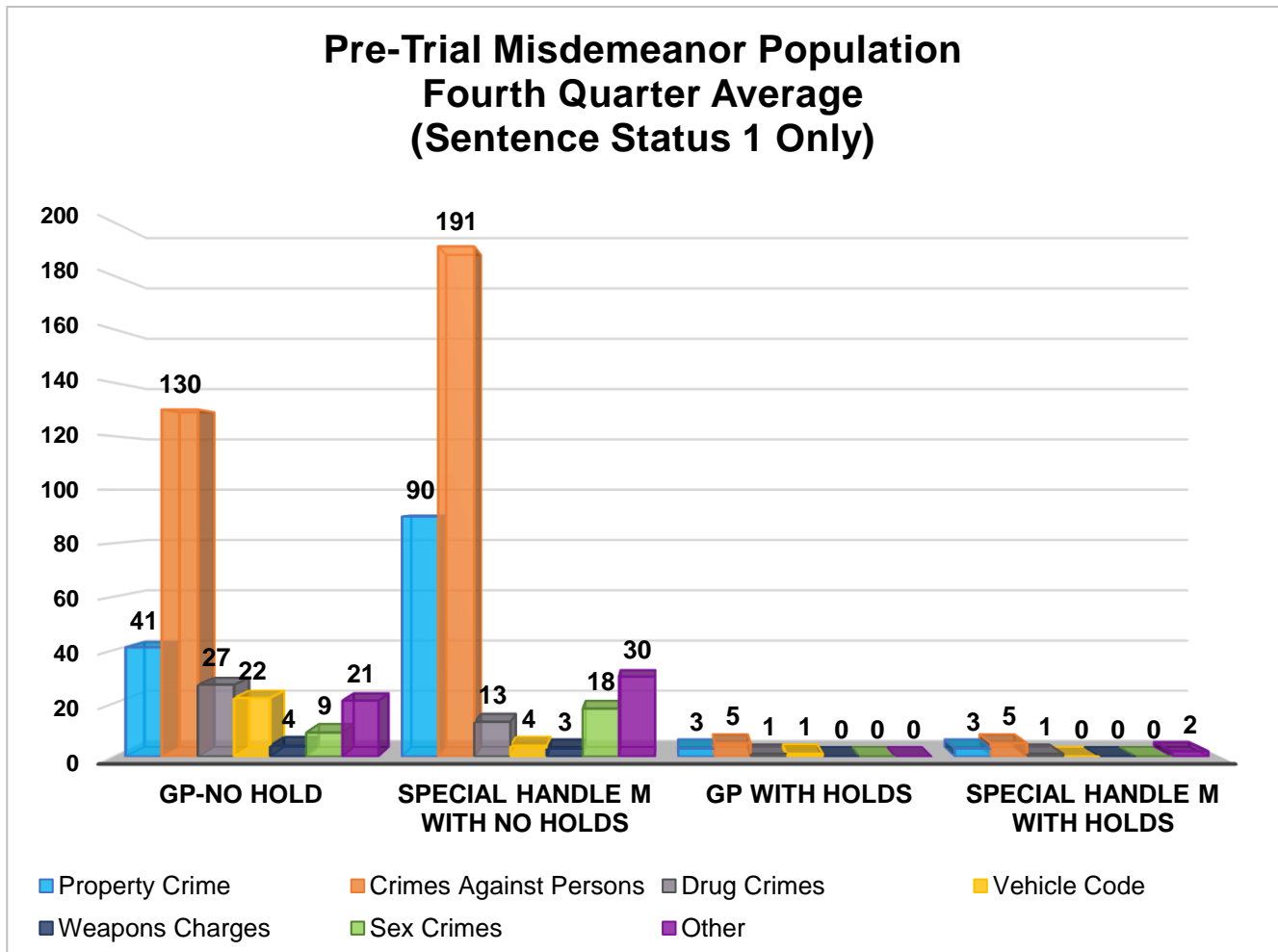
## PRE – TRIAL MISDEMEANOR POPULATION

The chart below provides a breakdown for the pre-trial inmate population, incarcerated for a misdemeanor, who have not yet been convicted. “Holds” indicates the inmates are being held on a matter pending from an outside agency.

Pre-trial Misdemeanor Population (Sentence Status 1 only)

| Arrest Category                | Property Crimes | Crimes Against Persons | Drug Crimes | Vehicle Codes | Weapons Charges | Sex Crimes | Other     | Total      | Percentage of the pre-trial Population |
|--------------------------------|-----------------|------------------------|-------------|---------------|-----------------|------------|-----------|------------|--|
| GP No Hold                     | 41              | 130                    | 27          | 22            | 4               | 9          | 21        | 254        | 40%                                    |
| Special Handle M with No Holds | 90              | 191                    | 13          | 4             | 3               | 18         | 30        | 349        | 56%                                    |
| GP with Holds                  | 3               | 5                      | 1           | 1             | 0               | 0          | 0         | 10         | 2%                                     |
| Special Handle M with Holds    | 3               | 5                      | 1           | 0             | 0               | 0          | 2         | 11         | 2%                                     |
| <b>Total</b>                   | <b>137</b>      | <b>331</b>             | <b>42</b>   | <b>27</b>     | <b>7</b>        | <b>27</b>  | <b>53</b> | <b>624</b> | <b>100%</b>                            |

*\*Information contained is based on a snapshot of the daily inmate population purge every Tuesday.*



*\*It should be noted that an inmate who is sentence status 1 (often referred to as “pretrial”) could be in trial, or even completed trial, but is just not fully sentenced. Most inmates in sentence status 1 will be pretrial.*

## PRE-TRIAL BAIL HOLDS

The numbers below represent the average number of inmates in LASD custody eligible for bail with the noted bail amounts.

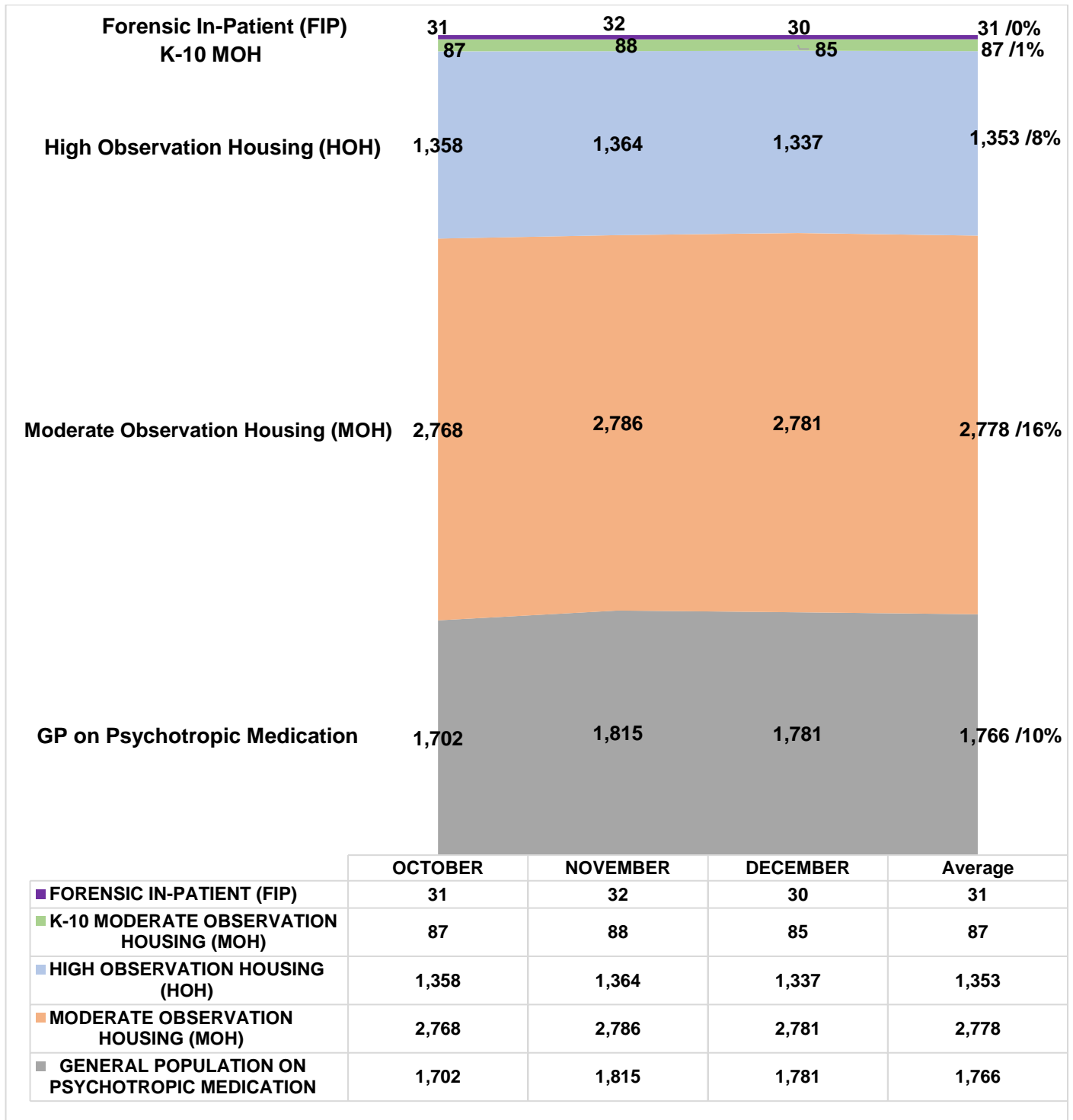
| Sentence Status 1              | October    |              |              | November   |              |              | December   |              |              | Quarter 4 Average |              |              |
|--------------------------------|------------|--------------|--------------|------------|--------------|--------------|------------|--------------|--------------|-------------------|--------------|--------------|
|                                | With Hold  | No Hold      | Total        | With Hold  | No Hold      | Total        | With Hold  | No Hold      | Total        | With Hold         | No Hold      | Total        |
| <b>\$1 - \$25,000</b>          | 12         | 269          | 281          | 13         | 276          | 289          | 17         | 271          | 288          | 14                | 272          | 286          |
| <b>\$25,001 - \$26,000</b>     | 1          | 20           | 21           | 1          | 19           | 20           | 0          | 22           | 22           | 1                 | 20           | 21           |
| <b>\$26,001 - \$50,000</b>     | 28         | 618          | 646          | 34         | 585          | 619          | 27         | 565          | 592          | 30                | 589          | 619          |
| <b>\$50,001 - \$100,000</b>    | 35         | 827          | 862          | 37         | 788          | 825          | 40         | 753          | 793          | 37                | 789          | 826          |
| <b>\$100,001 - \$500,000</b>   | 64         | 1,422        | 1,486        | 65         | 1,344        | 1,409        | 71         | 1,278        | 1,349        | 67                | 1,348        | 1,415        |
| <b>\$500,001 - \$1 Million</b> | 58         | 1,399        | 1,457        | 53         | 1,387        | 1,440        | 61         | 1,376        | 1,437        | 57                | 1,387        | 1,444        |
| <b>No Bail</b>                 | 550        | 2,456        | 3,006        | 556        | 2,335        | 2,891        | 510        | 2,241        | 2,751        | 539               | 2,344        | 2,883        |
| <b>Total</b>                   | <b>748</b> | <b>7,011</b> | <b>7,759</b> | <b>759</b> | <b>6,734</b> | <b>7,493</b> | <b>726</b> | <b>6,506</b> | <b>7,232</b> | <b>745</b>        | <b>6,749</b> | <b>7,494</b> |

*\*The bail reflected is not necessarily the bail at the time of arrest. Once remanded by the court, the bail amount may change.*

*\* Information encompassed in this report/document depicts data related to a specific date and time. Data may differ based on numerous factors related to an inmate's status, disposition, facility, etc. Information may differ based on systems queried, archived information, date/time parameters or numerous other factors. Information in disparate reports should not be combined as data sets may be inconsistent in queries and responses.*

## MENTAL HEALTH INMATE POPULATION

This quarter the overall inmate population was 17,203. The mental health population accounted for 35 percent of this population. Currently, inmates identified with mental health needs requiring specialized housing moderate or high observation housing, account for 25 percent of the overall population. This remaining 10 percent have been treated and continue to receive psychotropic medication while housed in general population.



\* Information contained is based on a snapshot of the daily inmate population purge every Tuesday.

## MISDEMEANOR INCOMPETENT TO STAND TRIAL (MIST)

The Los Angeles County Jail houses inmates who are awaiting trial for misdemeanor charges who have been found to be incompetent to stand trial. This quarter the average number of inmates on MIST is 299.

| <b>Misdemeanor Incompetent to Stand Trial (MIST)</b> |        |            |          |        |            |          |        |            |                   |
|--|--------|------------|----------|--------|------------|----------|--------|------------|-------------------|
| October  |        |            | November |        |            | December |        |            | Quarterly Average |
| Male   | Female | Total      | Male     | Female | Total      | Male     | Female | Total      |                   |
| 206  | 73     | <b>279</b> | 229      | 76     | <b>305</b> | 230      | 84     | <b>314</b> | <b>299</b>        |

\* Information contained is based on a snapshot of the daily inmate population purge every Tuesday.

## AMERICANS WITH DISABILITIES ACT (ADA)

ADA Housing is used to accommodate inmates with mobility limitations and/or physical disabilities. This quarter the average number of inmates requiring ADA is 403 which is slightly lower than last quarter's (415) total.

| <b>Americans With Disabilities Act (ADA)</b> |            |            |            |                   |
|--|------------|------------|------------|-------------------|
| Disability                                   | October    | November   | December   | Quarterly Average |
| Seeing Impaired - I                          | 12         | 11         | 11         | 11                |
| Hearing Impaired - D                         | 14         | 12         | 14         | 13                |
| Wheelchair - W                               | 194        | 232        | 220        | 215               |
| Mobility Impaired – U                        | 175        | 159        | 156        | 163               |
| <b>Monthly Total</b>                         | <b>395</b> | <b>414</b> | <b>401</b> | <b>403</b>        |

\* Information contained is based on a snapshot of the daily inmate population purge every Tuesday.

## MEDICAL HOUSING

Medical Outpatient/Specialty Housing (MOSH) is provided to inmates who require a level of medical treatment beyond that of stabilized medication distribution (pill call). The MOSH area in MCJ is also used to house inmates with mobility issues.

| <b>Additional Medical Housing – Not ADA Designated</b> |            |            |            |                   |
|--|------------|------------|------------|-------------------|
| Housing Area   | October    | November   | December   | Quarterly Average |
| Correctional Treatment Center (CTC)                    | 99         | 115        | 101        | 105               |
| Los Angeles County Medical Center (LCMC)               | 20         | 25         | 24         | 23                |
| *MCJ Medical/Clinic                                    | 427        | 438        | 425        | 430               |
| <b>Monthly Total</b>                                   | <b>546</b> | <b>578</b> | <b>550</b> | <b>558</b>        |

\* Includes some ADA housing.

\*\* Data are averages gathered from Facility Count Sheet every Tuesday.

# **IN-CUSTODY PROGRAMS**



## LA COUNTY INMATE IN-CUSTODY PROGRAMS

The Los Angeles County Jail offers several in-custody programs. Programs vary from a number of in-custody work assignments, vocational job training, education, and life skill classes, as well as fire camp training and California Department of Corrections and Rehabilitation fire camp placement for AB109 inmates. Various programs awarded sentenced inmates additional time credits for their participation pursuant to the California Penal Code:

### CREDIT EARNINGS

| Program                | Penal Code | Credit Earned                    | Type of Inmate          |
|------------------------|------------|----------------------------------|-------------------------|
| <b>Sentenced GT/WT</b> | 4019 PC    | Day-for-Day (1:1)                | All Sentenced Inmates   |
| <b>Conservation</b>    | 4019.1 PC  | One and one half-for One (1.5:1) | All Sentenced Inmates   |
| <b>Fire Camp</b>       | 4019.2 PC  | Two-for-One (2:1)                | AB109 Sentenced Inmates |
| <b>Milestone</b>       | 4019.4 PC  | Up to 6 weeks per year           | AB109 Sentenced Inmates |

### CONSERVATION WORK PROGRAM

The Conservation Work Program (CWP) requires inmates to complete their adjusted sentence while working in various job classifications, giving them the skills and work discipline necessary to increase their chances of success once released. Effective January 2015, all sentenced offenders, including Traditional County Sentenced (TCS) inmates are eligible to receive credits pursuant to Penal Code Section 4019.1. For this quarter, approximately 2,805 offenders (16% of the population) participated in CWP.

| <b>CONSERVATION WORK PROGRAM (CWP)</b> |         |          |          |                   |
|--|---------|----------|----------|-------------------|
| Inmate Type                            | October | November | December | Quarterly Average |
| Inmates Participated In Programs       | 2,778   | 2,828    | 2,808    | <b>2,805</b>      |

*\* Information contained is based on a snapshot of the daily inmate population purge every Tuesday.*

### EDUCATION BASED INCARCERATION PROGRAMS

The Education Based Incarceration Program (EBI) uses traditional and nontraditional education which is designed to reduce incarceration by increasing the educational, civic, social, economic, and life skills of its participants. Offenders who are sentenced are eligible to receive credits pursuant to Penal Code 4019.4. For this quarter, a total of 561 Milestone credits were awarded.

## **FIRE CAMP TRAINING PROGRAM**

Fire Camp Training and California Institute for Women (CIW) training are aligned under the Conservation Work Program (CWP). This program is the first step of training before an inmate may participate in a State facilitated Fire Camp Program overseen by the California Department of Corrections and Rehabilitation (CDCR). Offenders who are sentenced under AB109 are eligible to receive credits pursuant to Penal Code 4019.1. The average number of inmates enrolled in the Fire Camp training program for this quarter was 77.

| <b>FIRE CAMP TRAINING CAMP</b> |                |                 |                 |                          |
|--------------------------------|----------------|-----------------|-----------------|--------------------------|
| <b>Housing Type</b>            | <b>October</b> | <b>November</b> | <b>December</b> | <b>Quarterly Average</b> |
| PDC Fire Camp Training (Men)   | 75             | 71              | 74              | 73                       |
| CIW Fire Camp Training (Women) | 4              | 4               | 5               | 4                        |
| <b>Monthly Totals</b>          | <b>79</b>      | <b>75</b>       | <b>79</b>       | <b>77</b>                |

## **CALIFORNIA DEPARTMENT OF CORRECTIONS AND REHABILITATION (CDCR)** **FIRE CAMP PROGRAM**

Once an inmate passes all necessary requirements in the Fire Camp Training Program located at PDC East facility, they are transferred to one of five state contracted fire camp sites where they will serve the remainder of their adjusted sentence. Offenders who are sentenced under AB109 are eligible to receive credits pursuant to Penal Code 4019.2. The average number of inmates assigned to CDCR Fire Camps for this quarter was 61.

| <b>CDCR FIRE CAMP</b>      |                |                 |                 |                          |
|----------------------------|----------------|-----------------|-----------------|--------------------------|
| <b>Fire Camp Locations</b> | <b>October</b> | <b>November</b> | <b>December</b> | <b>Quarterly Average</b> |
| Acton Fire Camp            | 14             | 16              | 15              | 15                       |
| Francisquito Fire Camp     | 9              | 9               | 11              | 10                       |
| Holton Fire Camp           | 22             | 21              | 19              | 21                       |
| Julius Klein Fire Camp     | 14             | 15              | 14              | 14                       |
| Malibu Women's Fire Camp   | 1              | 2               | 2               | 2                        |
| <b>Monthly Totals</b>      | <b>60</b>      | <b>63</b>       | <b>61</b>       | <b>61</b>                |

## **BACK ON TRACK PROGRAM**

The Back on Track (BOT) program began in February 2015 and is overseen by EBI staff. The program delivers education and comprehensive reentry services to offenders before and after a participant is released from jail. The program focuses on the critical time following an inmate's release from jail, by providing the seamless reentry services vital for success, including employment and life skill services. This program is available to inmates who have been sentenced under AB109 and are eligible to receive Milestone credits. They must be enrolled in the program for 18 months—divided into 9 months in-custody and 9 months out-of-custody.

### **IN-CUSTODY SUBSTANCE TREATMENT AND REENTRY TRANSITION**

| <b>Back On Track</b> | <b>October</b> | <b>November</b> | <b>December</b> | <b>Quarterly Average</b> |
|----------------------|----------------|-----------------|-----------------|--------------------------|
| South Barrack        | 66             | 66              | 72              | <b>68</b>                |

The jail based Substance Treatment and Reentry Transition (START) treatment services began at CRDF in February 2016 providing substance use disorder (SUD) treatment services to 50 women on any given day. In May of 2017, the program expanded to treat up to 90 women. In May 2017 services began at MCJ for up to 90 gay and transgender inmates and at PDC South facility treating up to 200 men in general population on any given day. In March 2018, services commenced at TTCF to treat up to 90 men with co-occurring mental health and SUD. Treatment services include screening, clinical assessment, group and individual counseling, case management services, medication assisted treatment, re-entry planning and care coordination with CTU and transportation to community based services post release.

| <b>In-Custody S.T.A.R.T (CRDF)</b> | <b>October</b> | <b>November</b> | <b>December</b> | <b>Quarterly Average</b> |
|------------------------------------|----------------|-----------------|-----------------|--------------------------|
| Enrolled                           | 94             | 97              | 101             | <b>97</b>                |
| Completed                          | 0              | 41              | 0               | <b>14</b>                |

| <b>In-Custody S.T.A.R.T (MCJ)</b> | <b>October</b> | <b>November</b> | <b>December</b> | <b>Quarterly Average</b> |
|-----------------------------------|----------------|-----------------|-----------------|--------------------------|
| Enrolled                          | 41             | 38              | 38              | <b>39</b>                |
| Completed                         | 7              | 0               | 5               | <b>4</b>                 |

| <b>In-Custody S.T.A.R.T (PDC)</b> | <b>October</b> | <b>November</b> | <b>December</b> | <b>Quarterly Average</b> |
|-----------------------------------|----------------|-----------------|-----------------|--------------------------|
| Enrolled                          | 222            | 221             | 237             | <b>227</b>               |
| Completed                         | 46             | 27              | 34              | <b>36</b>                |

| <b>In-Custody S.T.A.R.T (TTCF)</b> | <b>October</b> | <b>November</b> | <b>December</b> | <b>Quarterly Average</b> |
|------------------------------------|----------------|-----------------|-----------------|--------------------------|
| Enrolled                           | 80             | 64              | 83              | <b>76</b>                |
| Completed                          | 0              | 25              | 0               | <b>8</b>                 |

*\*Services at TTCF began in March 2018.*

# **ALTERNATIVES TO CUSTODY PROGRAMS**

## **ALTERNATIVES TO CUSTODY PROGRAMS**

The Community Transition Unit (CTU), the Community Based Alternatives to Custody Unit (CBAC), and the Compliance Team work together by utilizing a variety of alternatives to custody programming options in an effort to enhance an inmate's chance of success upon release. These programs are conducted in collaboration with local agencies including Community and Faith Based Organizations, Department of Mental Health (DMH), Department of Public Health (DPH), and other organizations. It is the Department's goal to program inmates from intake through re-entry into the community. With this approach, we hope to increase public safety and reduce the rate of recidivism.

Supported by release planning overseen by the CTU, and in partnership with contracted services, inmates are provided re-entry assistance through linkages to services that are initiated while they are in-custody and continued upon release. Through the Alternatives to Custody (ATC) programs, qualifying inmates are afforded the opportunity to complete the remaining portion of their sentence in a community treatment program. Inmates who do not qualify for ATC due to security or other reasons are referred to community providers for re-entry assistance.

The ATC programs include:

### **SUBSTANCE TREATMENT AND REENTRY TRANSITION**

The Substance Treatment and Re-entry Transition (START) program is a Department Public Health, Substance Abuse Prevention Control (SAPC) funded program that places eligible male and female inmates into residential substance use disorder (SUD) treatment programs on electronic GPS monitoring as an alternative to custody (ATC) program.

### **FEMALE PROGRAMS**

The Female Programs are funded through community grants. They work directly with various residential programs approved by LASD, but not affiliated with the START program, and they offer treatment beds for inmates under the ATC program. Several programs cater to specific clientele who fit a specified demographic in regards to age and gender.

### **VETERAN'S ADMINISTRATION**

The Veteran's Administration (VA) funds SUD residential treatment, under the ATC program for inmates who are confirmed to be a veteran entitled to VA Benefits. The treatment programs are approved by the VA and are vetted by LASD.

## TRANSITIONAL CASE MANAGEMENT PROGRAM

The Transitional Case Management Program (TCM) is a Department of Public Health (DPH) funded program, whereby DPH employees refer Human Immunodeficiency Virus (HIV) infected inmates to a residential substance use disorder (SUD) treatment facility, approved and vetted by LASD, under the ATC program.

## TARZANA TREATMENT CENTER DMH/SUD PROGRAM

Tarzana Treatment Center, in partnership with LASD, DHS Correctional Health, and the Department of Mental Health, has made available 40 total beds for inmates with a co-occurring mild to moderate mental health diagnosis, and a SUD. Inmates are identified by DHS Jail Linkage staff and referred to Tarzana treatment for assessment and acceptance. Inmates must still qualify for ATC programming through a validated risk assessment and criminal history review.

## MENTAL HEALTH DIVERSION – NORMANDIE VILLAGE/GATEWAY

Normandie Village treats eligible male N3 inmates with mental illness who are a low security risk, and in a stabilized condition. They are selected to complete the remaining 60-180 days of their sentence in a 42 bed community-based Institution for Mental Disease (IMD) step-down facility. For acceptance into these programs, inmates must volunteer to participate in services and meet the following criteria:

1. Be 18-54 years of age
2. Must have a primary Axis I major psychiatric diagnosis
3. May have a secondary Axis I diagnosis of substance abuse
4. Must not be a registered sex offender
5. Must not have a fire setting history
6. Must be ambulatory
7. Must not have a serious or life-threatening medical problem
8. Must not require treatment in a locked setting
9. Must have applied for Supplemental Security Income (SSI)

| <b>Program Quarterly Statistics</b> | <b>Enrolled</b> | <b>Completed</b> | <b>Returned to Custody</b> | <b>Absconded</b> |
|-------------------------------------|-----------------|------------------|----------------------------|------------------|
| S.T.A.R.T.                          | 0               | 0                | 0                          | 0                |
| Female Programs                     | 0               | 0                | 0                          | 0                |
| Veterans                            | 0               | 0                | 0                          | 0                |
| Transitional Case Management        | 0               | 0                | 0                          | 0                |
| Mental Health Programs              | 0               | 0                | 0                          | 0                |

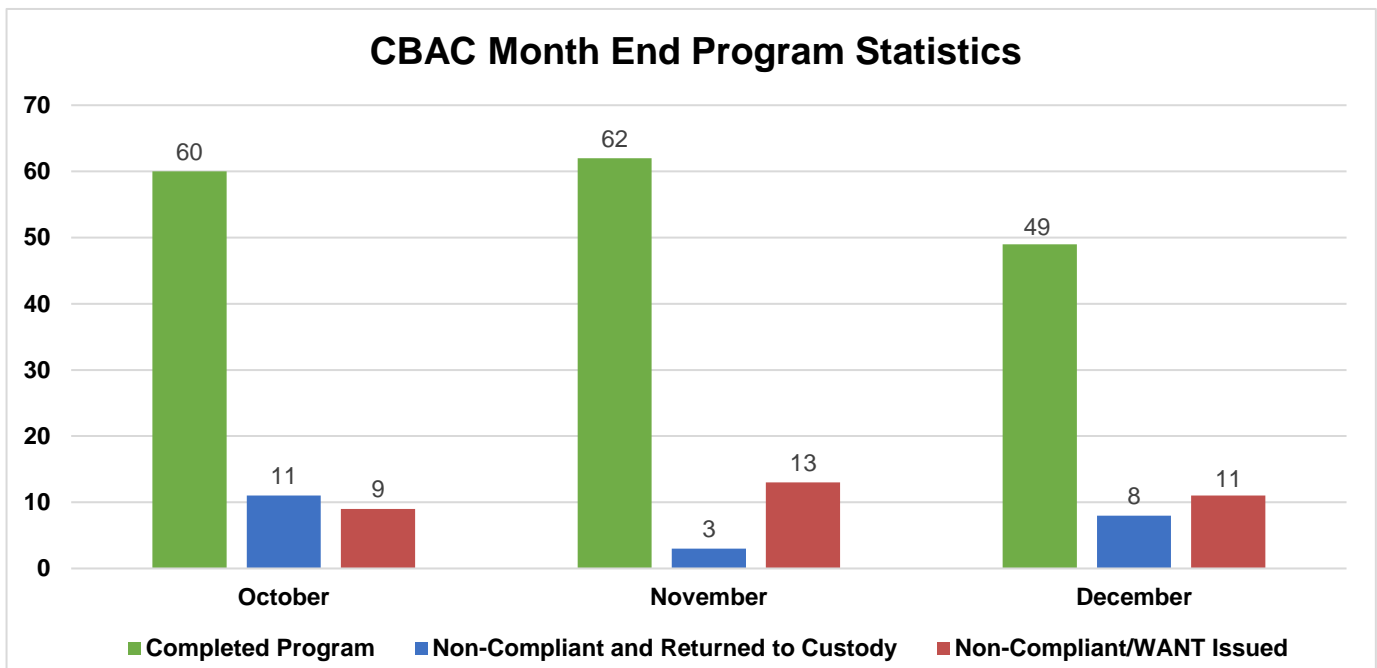
*\*Referrals and placements to the S.T.A.R.T. community program are on hold pending execution of a new memorandum of agreement.*

## COMMUNITY BASED ALTERNATIVES TO CUSTODY

The PMB's Community Based Alternatives to Custody (CBAC) unit identifies low risk sentenced offenders within the jail population who qualify to finish their remaining sentence in and out-of-custody alternative environment. Although these individuals are outside of traditional custody, they are still under the jurisdiction of the Department.

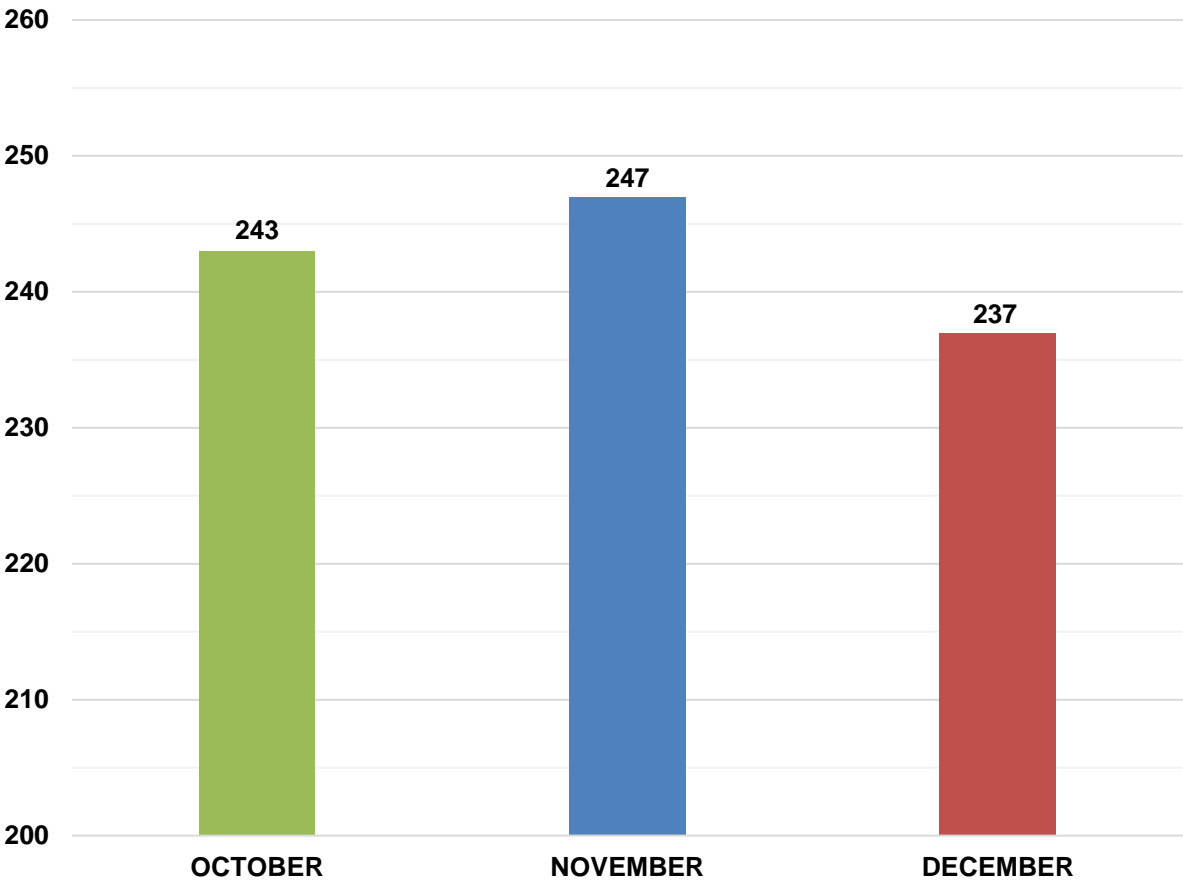
| CBAC Monthly Placement        |           |           |           |           |          |           |           |           |           |
|-------------------------------|-----------|-----------|-----------|-----------|----------|-----------|-----------|-----------|-----------|
| Program                       | October   |           |           | November  |          |           | December  |           |           |
|                               | M         | F         | Total     | M         | F        | Total     | M         | F         | Total     |
| Electronic Monitoring Program | 22        | 7         | <b>29</b> | 23        | 3        | <b>26</b> | 23        | 7         | <b>30</b> |
| Weekender Work Program        | 19        | 0         | <b>19</b> | 28        | 2        | <b>30</b> | 22        | 3         | <b>25</b> |
| Work Release Program          | 22        | 10        | <b>32</b> | 26        | 3        | <b>29</b> | 22        | 9         | <b>31</b> |
| <b>Monthly Totals</b>         | <b>63</b> | <b>17</b> | <b>80</b> | <b>77</b> | <b>8</b> | <b>85</b> | <b>67</b> | <b>19</b> | <b>86</b> |

The graph below depicts the total number of offenders who successfully completed the remainder of their sentence on a CBAC program. It also shows the number of offenders who failed to complete the program, and with the efforts of the PMB Compliance Unit, were returned back to finish their sentence, and those who failed to complete the program and were not returned back to custody.



**LA COUNTY ALTERNATIVES TO CUSTODY INMATE POPULATION**

**Fourth Quarter 2019  
Los Angeles County Alternative to Custody Inmate Count**



| 2019 Quarterly<br>ATC ADIP |
|----------------------------|
| 242                        |

*Includes Community Based Alternatives to Custody (CBAC), Fire Camp and inmate station workers.*



# **RE - ENTRY ASSISTANCE**

## COMMUNITY RE-ENTRY AND RESOURCE CENTER

The information below represents recently released inmates and inquiries and/or contacts made by members of the general public who have been assisted with services at the Community Re-entry and Resource Center (CRRC) for the fourth quarter of 2019.

| Inquiry Demographic Population | October    | November   | December   | Total        | Average    |
|--------------------------------|------------|------------|------------|--------------|------------|
| General Release                | 277        | 202        | 204        | <b>683</b>   | <b>228</b> |
| General Public                 | 139        | 95         | 90         | <b>324</b>   | <b>108</b> |
| Alternative to Custody Program | 0          | 1          | 0          | <b>1</b>     | <b>0</b>   |
| Coordinated Release            | 147        | 99         | 90         | <b>336</b>   | <b>112</b> |
| Work Release                   | 3          | 2          | 0          | <b>5</b>     | <b>2</b>   |
| Phone Referral                 | 0          | 0          | 0          | <b>0</b>     | <b>0</b>   |
| <b>Monthly Totals:</b>         | <b>566</b> | <b>399</b> | <b>384</b> | <b>1,349</b> | <b>450</b> |
| Inquiry Demographic Gender     | October    | November   | December   | Total        | Average    |
| Male                           | 426        | 320        | 317        | <b>1,063</b> | <b>354</b> |
| Female                         | 154        | 90         | 79         | <b>323</b>   | <b>108</b> |
| <b>Monthly Totals:</b>         | <b>580</b> | <b>410</b> | <b>396</b> | <b>1,386</b> | <b>462</b> |

CTU personnel visit the Inmate Reception Center release area to educate and remind inmates waiting to go home about services available at the CRRC. Walks of the release area are performed every 90 minutes.

|                                   | October | November | December | Total        | Average    |
|-----------------------------------|---------|----------|----------|--------------|------------|
| Number of 90 Minute Contact Walks | 62      | 38       | 31       | <b>131</b>   | <b>44</b>  |
| Number of Inmates Contacted       | 1,199   | 622      | 366      | <b>2,187</b> | <b>729</b> |
| Number of Flyers Distributed      | 914     | 557      | 352      | <b>1,823</b> | <b>608</b> |

## CTU COORDINATED RELEASES TO VARIOUS PROGRAMS

The final 90 days leading to an inmate's release from custody are the most critical in ensuring a successful transition from Custody to Community Based Organization (CBO) Treatment Centers. During the time leading up to their release, inmates are interviewed several times by the CBO Staff and members of the Community Transition Unit to ensure that they are matched up with a suitable treatment provider.

The coordinated release process helps to create a trust between law enforcement, inmate participants, and CBO's. The CTU's ultimate goal is to provide a successful recovery and re-entry into the community and to ultimately decrease recidivism.

|                     | October | November | December | Total      | Average    |
|---------------------|---------|----------|----------|------------|------------|
| Coordinated Release | 177     | 141      | 151      | <b>469</b> | <b>156</b> |

## CTU VITAL RECORDS

Through the Vital Records Program, LASD staff members have been deputized by the County Registrar-Recorder to facilitate birth certificate applications for inmates born in Los Angeles County, who have requested a certified copy. The fee of \$28 for certified copies of birth certificates is funded by the Inmate Welfare Fund.

All inmates in custody are able to apply for a replacement California Identification Card. The issued ID's are provided to the inmates upon their release. The inmates must still report to the California Department of Motor Vehicles (DMV) to obtain a driver license following their release.

| Records Processed                    | October    | November   | December   | Quarterly Total | Average    |
|--------------------------------------|------------|------------|------------|-----------------|------------|
| DMV - California Identification Card | 285        | 219        | 155        | 659             | 220        |
| RECORDS – Birth Certificate          | 435        | 237        | 157        | 829             | 276        |
| <b>Totals</b>                        | <b>720</b> | <b>456</b> | <b>312</b> | <b>1,488</b>    | <b>496</b> |

| Records Issued                       | October    | November   | December   | Quarterly Total | Average    |
|--------------------------------------|------------|------------|------------|-----------------|------------|
| DMV - California Identification Card | 94         | 250        | 114        | 458             | 153        |
| RECORDS – Birth Certificate          | 247        | 233        | 382        | 862             | 287        |
| <b>Totals</b>                        | <b>341</b> | <b>483</b> | <b>496</b> | <b>1,320</b>    | <b>440</b> |