



CUSTODY DIVISION POPULATION QUARTERLY REPORT

October - December 2018

Los Angeles County Sheriff's Department

Alex Villanueva, Sheriff

TABLE OF CONTENTS

Executive Summary.....	3
1. Population Trends.....	4
LA County Inmate Population Graphs	
Monthly ADIP Trend	
Arrests, Bookings and Releases	
Release Practices	
Homeless and Veteran	
2. Facilities Overview.....	11
Rated Capacities - Board of State and Community Corrections	
Jail Housing Facilities	
Men's Central Jail	
Twin Towers Correctional Facility	
Century Regional Detention Center	
Pitchess Detention Center – East	
Pitchess Detention Center – North	
Pitchess Detention Center – South	
North County Correctional Facility	
3. Population Overview.....	18
Inmate Population Demographics	
Inmate Population Offender Age Groups	
Classification and Re-Classification	
Re-classification Statistics	
Inmate Population Breakdown	
Crime Classification Statistics	
Inmates with M7	
Pre-Trial Population	
Pre-Trial Misdemeanor Population	
Pre-Trial Bail Holds	
Mental Health Inmate Population	
Misdemeanor Incompetent to Stand Trial (MIST)	
Americans with Disabilities Act (ADA)	
Medical Housing	
4. In-Custody Programs.....	32
Credit Earnings	
Conservation Work Program (CWP)	
Education Based Incarceration Program (EBI)	
Fire Camp Training Program	
CDCR Fire Camp Program	
Back on Track (BOT)	
In-Custody S.T.A.R.T Program	

5. Alternatives to Custody Programs.....	36
Community Transition Unit (CTU)	
Substance Abuse Treatment and Reentry Transition (S.T.A.R.T)	
Community Grant Beds	
Veteran’s Administration (VA)	
Transitional Case Management Program (TCM)	
Tarzana Treatment Center DMH/SUD Program	
Mental Health Diversion – Normandie Village/Gateway	
Community Based Alternatives to Custody (CBAC)	
6. Re-Entry Assistance.....	40
Community Re-Entry and Resource Center (CRRC)	
CTU Coordinated Releases to Various Programs	
CTU Vital Records	

EXECUTIVE SUMMARY

The Los Angeles County Sheriff's Department (LASD) is committed to maintaining a secure and constitutional jail system. As part of this effort, a periodic report is essential to better understand and quantify population trends. This **Custody Division Quarterly Report** reports data collected during the Fourth Quarter of 2018, and is produced by the Population Management Bureau (PMB) Analysis Unit.

The average daily inmate population (ADIP) during the fourth quarter of 2018 was 16,889. This number includes approximately 281 inmates participating in community-based alternatives to custody programs. This is lower than the fourth quarter of 2017 ADIP average of 17,408, including approximately 323 who participated in the community-based alternative to custody programs.

The Traditional County Sentenced (TCS) population this quarter was approximately 1,380. This is slightly higher than last quarter (1,318). The number of inmates sentenced under 1170 PC was approximately 2,637. This is slightly less than last quarter (2,683) totals.

The mental health population increased slightly to 5,272 (from 5,184 last quarter) and comprised 32 percent of the total inmate population. During the fourth quarter of 2017, the mental health population was 4,817 and comprised 28 percent of the total inmate population. The continuing increase in the mental health population has necessitated the conversion of several general population housing units into mental health housing.

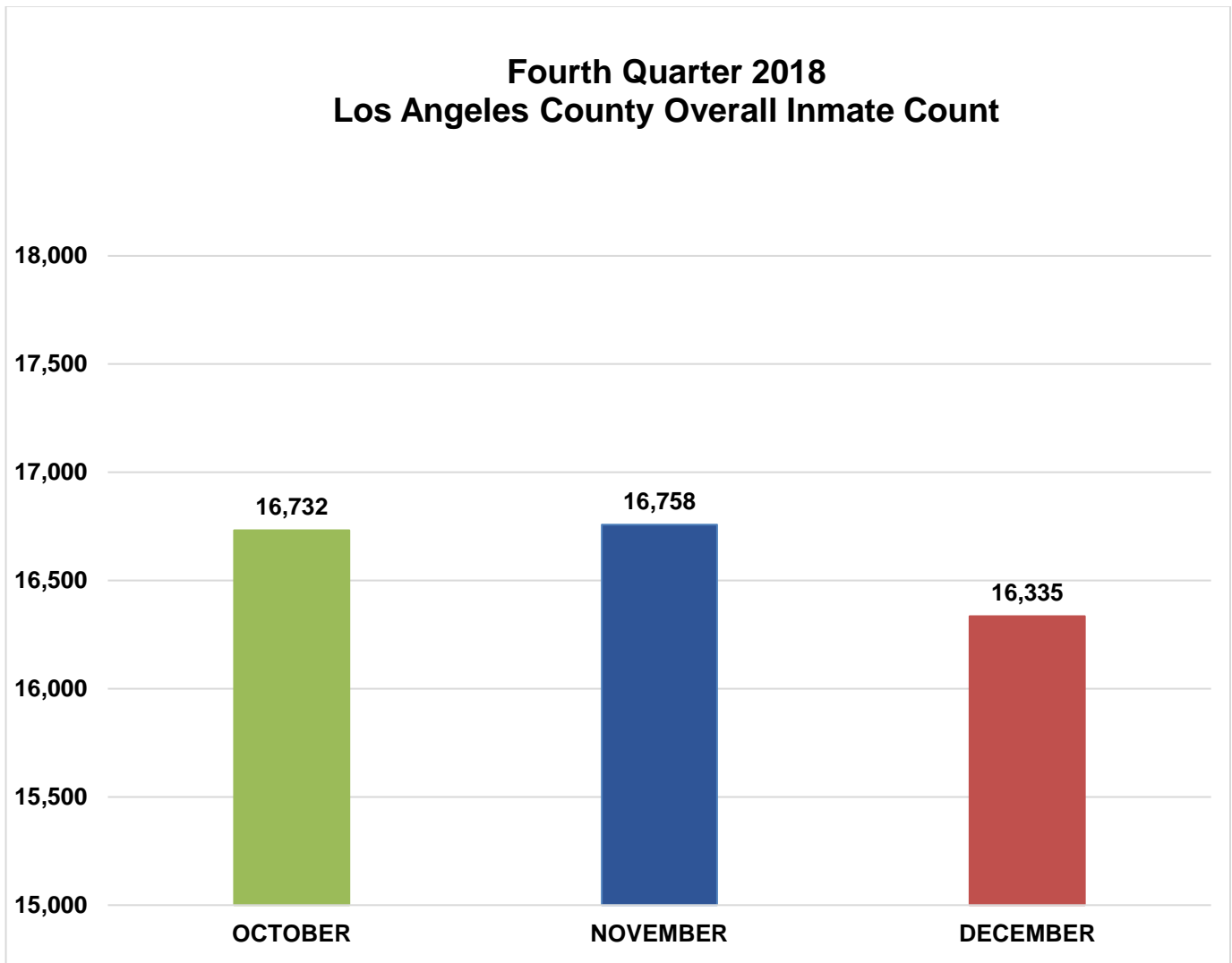
Conditions of over-crowding remained this quarter and necessitated the continued use of percentage release to manage the inmate population. Inmates serving traditional county sentence completed 10 percent of their court ordered sentences. Inmates who were serving sentences for designated serious and/or violent offenses (M7 charges) and those sentenced under 1170 PC (AB109) continued to serve 100 percent of their sentences, minus any time credits earned. For further information regarding this quarter's percentage release criteria see page 9 of this report.

In late-March 2018, the Department extended the release provision under penal code section 4024.1, which grants the Sheriff the authority to accelerate the release, discharge, or expiration of sentence date of sentenced inmates up to a maximum of 30 days or 10 percent off their term of sentence. Prior to March 2018, the Department utilized this section by allowing inmates five (5) additional days off their sentence, due to the critical need for space, it was extended to the maximum 30 days.

Information encompassed in this report/document depicts data related to a specific date and time. Data may differ based on numerous factors related to an inmate's status, disposition, facility, etc. Information may differ based on systems queried, archived information, date/time parameters or numerous other factors. Information in disparate reports should not be combined as data sets may be inconsistent in queries and responses.

POPULATION TRENDS

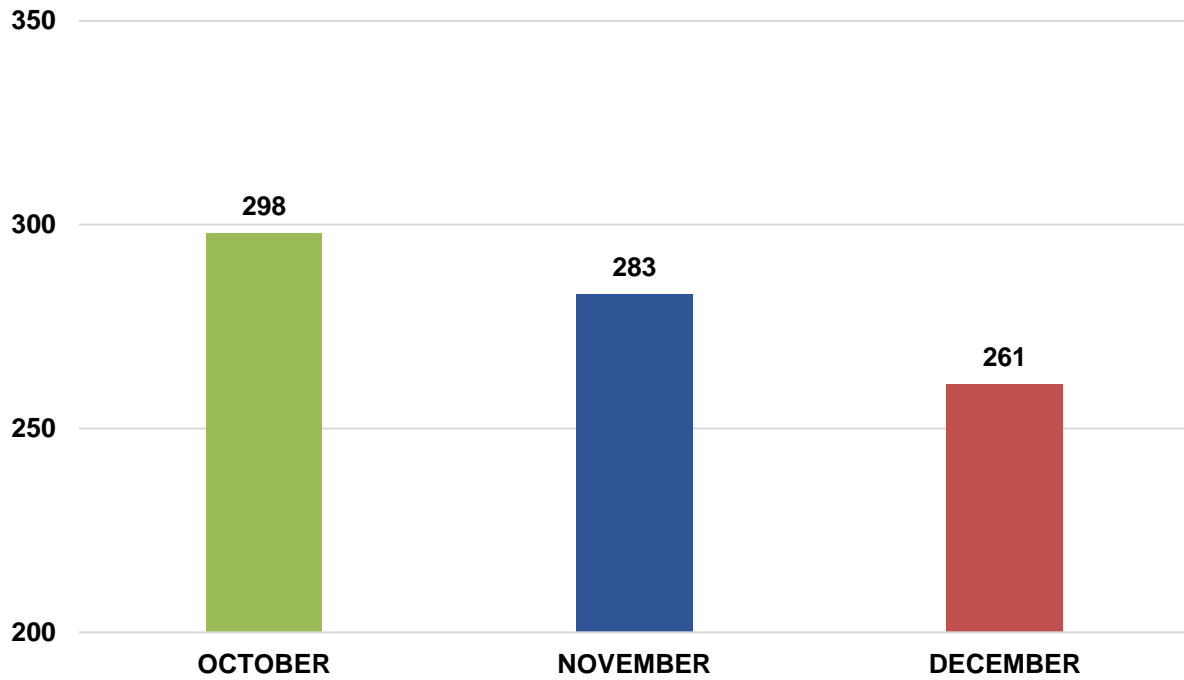
LA COUNTY INMATE POPULATION



2018 Quarterly Overall Division ADIP
16,608

Quarterly Division ADIP reflects all inmates processing into IRC, excludes ATC.

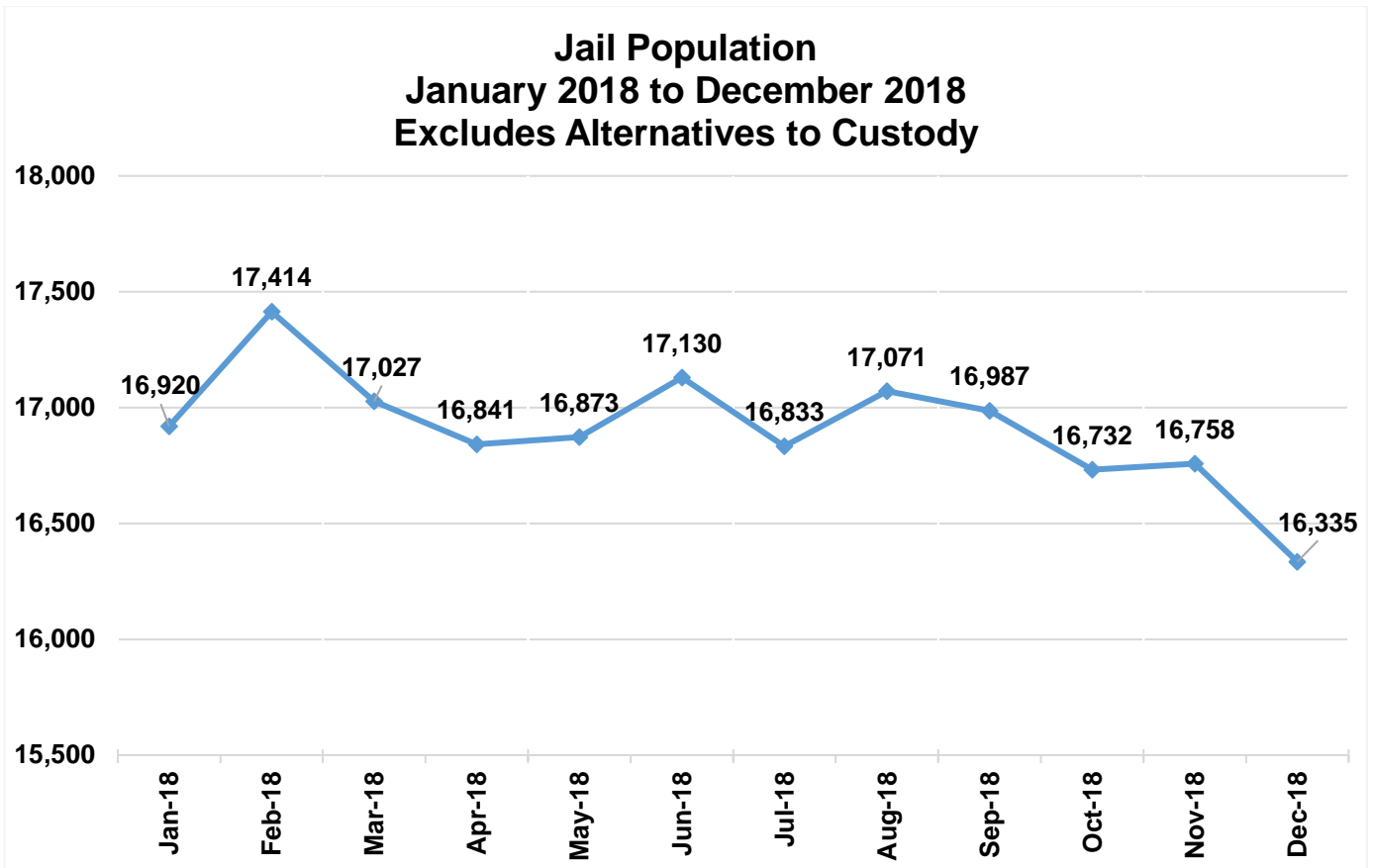
Fourth Quarter 2018 Los Angeles County Alternative to Custody Inmate Count



**2018 Quarterly
ATC ADIP**

281

Monthly ADIP Trend



Eight Year ADIP Comparison		
Year	ADIP	Notes
2011	15,014	(Oct - AB109 enacted)
2012	18,043	
2013	18,687	
2014	18,680	(Nov - Prop 47)
2015	17,049	
2016	16,613	
2017	17,024	
2018	16,910	

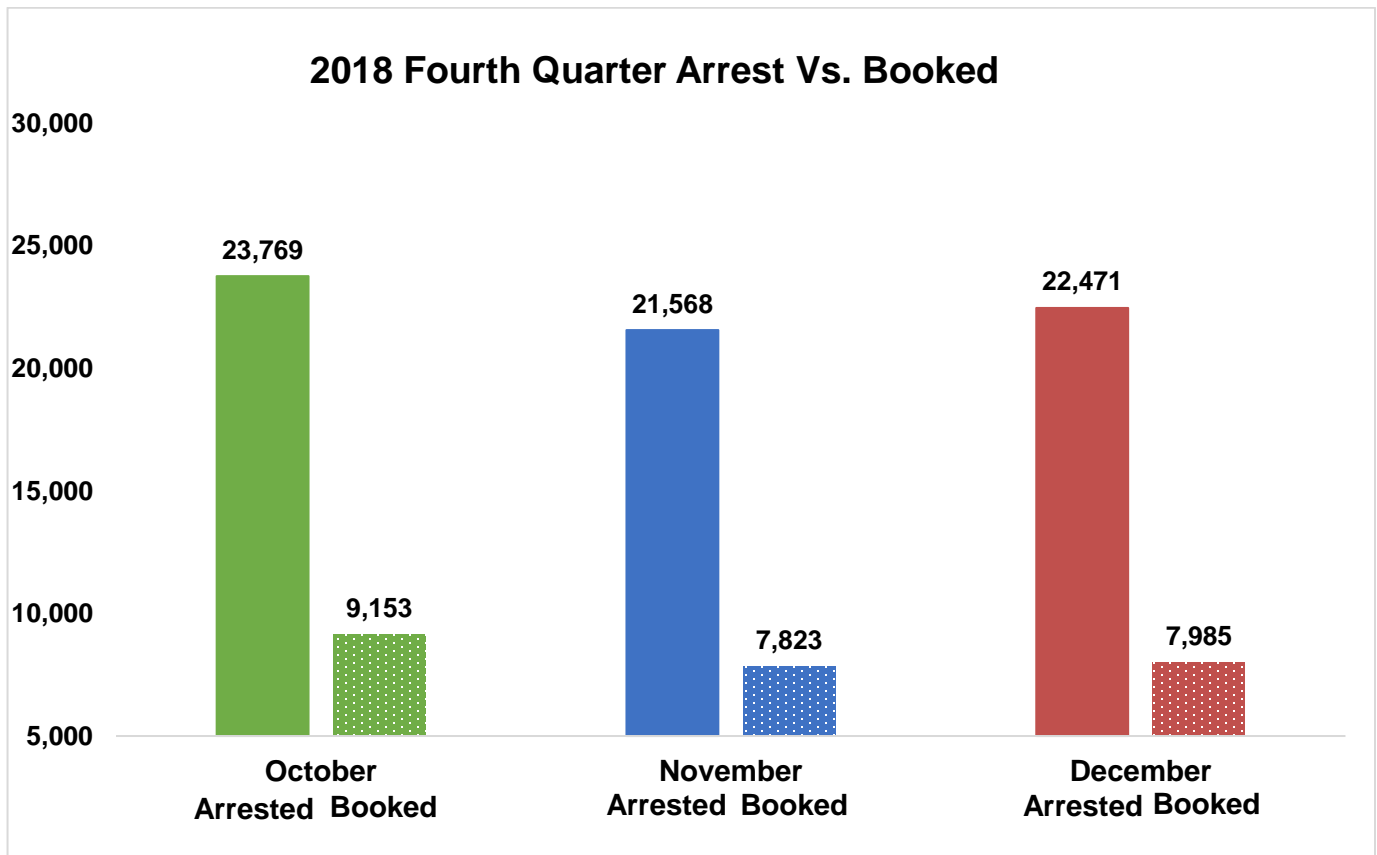
FOURTH QUARTER 2018 - ARREST AND BOOKING STATS

Arrest activity decreased by 11% from last quarter (76,626). The number of inmates booked into the LA County jail this quarter decreased by 12% from last quarter's number of inmates booked into custody (28,373).

	October		November		December		Quarterly Total	Quarterly Average	Quarterly %
	Monthly Total	%	Monthly Total	%	Monthly Total	%			
Felony	8,789	37%	8,208	38%	8,223	37%	25,220	8,407	37%
Misdemeanor	14,394	61%	12,784	59%	13,787	61%	40,965	13,655	61%
Other	586	2%	576	3%	461	2%	1,623	541	2%
Total Arrested	23,769		21,568		22,471		67,808	22,603	
Total Booked into LA County	9,153	39%	7,823	36%	7,985	36%	24,961	8,320	37%

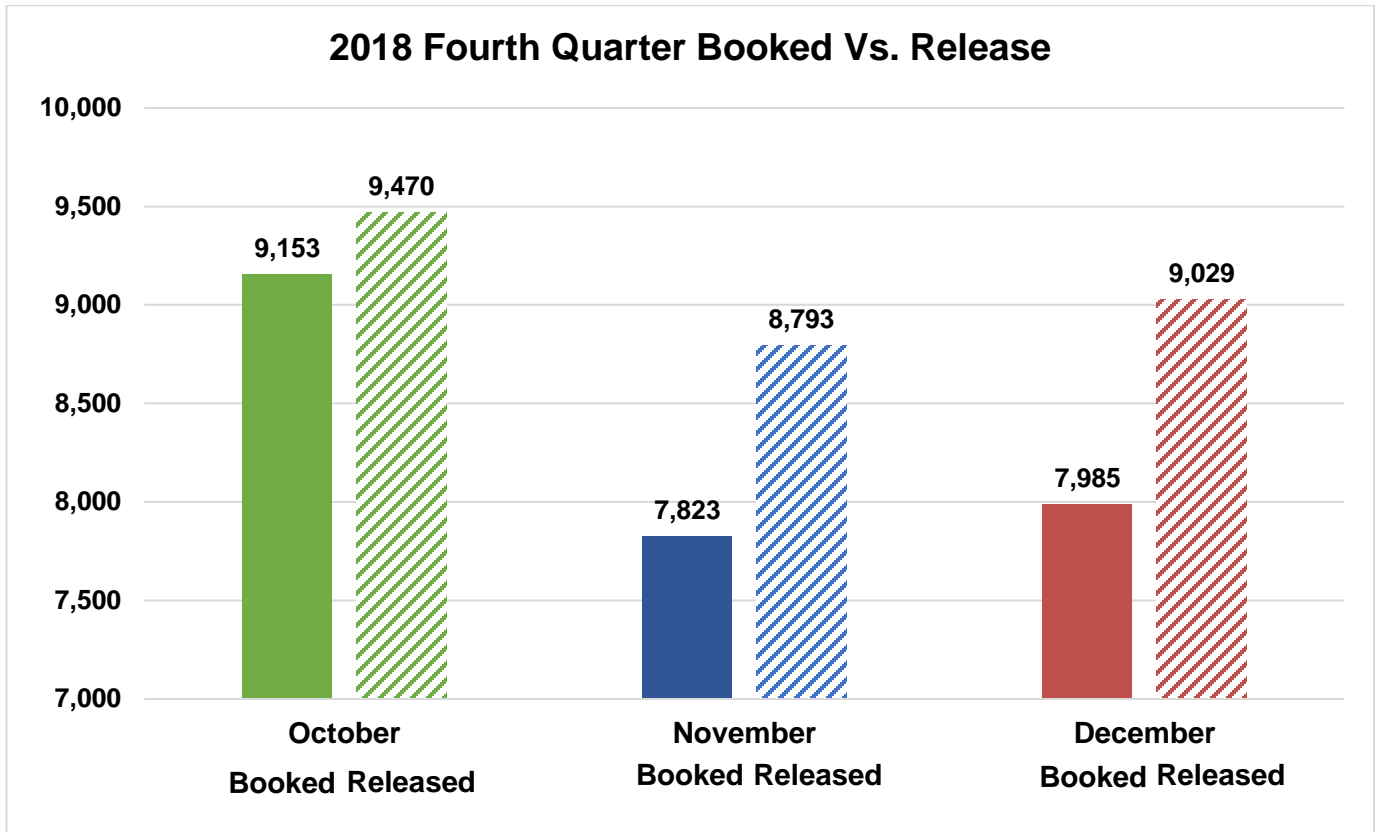
FOURTH QUARTER 2018 - ARRESTS VS. BOOKINGS

The graph below compares the average Arrests and Bookings for this quarter.



FOURTH QUARTER 2018 – BOOKINGS VS. RELEASES

LASD averaged approximately 9,097 releases this quarter. That's a decrease of approximately 8 percent of releases compared to last quarter (average of 9,863).



LA COUNTY JAIL RELEASE PRACTICES

Due to conditions of overcrowding, during this quarter traditional county sentenced inmates were subject to early release under the following conditions.

Month	Release Criteria Male	Release Criteria Female	*M7 Release Criteria	**Short Sentence Male	**Short Sentence Female
October	10%	10%	100%	180 days	180 days
November	10%	10%	100%	180 days	180 days
December	10%	10%	100%	180 days	180 days

*Inmates who have designated serious and/or violent offences or have notoriety in the community are classified as M7, which requires their record jacket go through extra 'security' checks prior to release from Sheriff's custody.

**Shorts are inmates who are sentenced to a term in county jail, which after all legal credits are awarded and the current jail percentage time is considered, are immediately released from Sheriff's custody after processing from court.

HOMELESS AND VETERAN

Homeless Population

The chart below provides an average breakdown of the inmate population who stated they were homeless by gender, major race and age category, which is 26% of the total population.

	October	November	December	TOTAL	AVERAGE
Male	3,856	3,841	3,705	11,402	3,800
Female	561	556	547	1,664	555
Total	4,417	4,397	4,252	13,066	4,355

	October	November	December	TOTAL	AVERAGE
Hispanic	2,029	2,020	1,963	6,012	2,004
Black	1,389	1,380	1,328	4,097	1,365
White	860	858	825	2,543	848
Other	139	139	136	414	138
Total	4,417	4,397	4,252	13,066	4,355

	October	November	December	TOTAL	AVERAGE
18 to 25	849	846	795	2,490	830
26 to 34	1,463	1,472	1,424	4,359	1,453
35 to 39	632	630	599	1,861	620
40 to 44	427	416	421	1,264	421
45 & Older	1,046	1,033	1,013	3,092	1,031
Total	4,417	4,397	4,252	13,066	4,355

**PMB discovered a software reporting error that had resulted in the under reporting of homeless inmates housed in the jail system. Effective September 2018, homeless data was collected from ATAR.*

Veteran Population

The chart below provides an average breakdown of the inmate population who stated they have served in the United State Military by gender, major race and age category, which is 2% of the total population.*

	October	November	December	TOTAL	AVERAGE
Male	385	389	377	1,151	384
Female	8	10	9	27	9
Total	393	399	386	1,178	393

	October	November	December	TOTAL	AVERAGE
Hispanic	103	103	105	311	104
Black	155	156	154	465	155
White	117	126	112	355	118
Other	18	14	15	47	16
Total	393	399	386	1,178	393

	October	November	December	TOTAL	AVERAGE
18 to 25	18	20	19	57	19
26 to 34	73	72	67	212	71
35 to 39	65	70	65	200	67
40 to 44	41	41	41	123	41
45 & Older	196	196	194	586	195
Total	393	399	386	1,178	393

**These are numbers based upon self-identification and have not been confirmed by the Veterans Administration.*

**Effective September 2018, veteran data was collected from ATAR.*

FACILITIES OVERVIEW

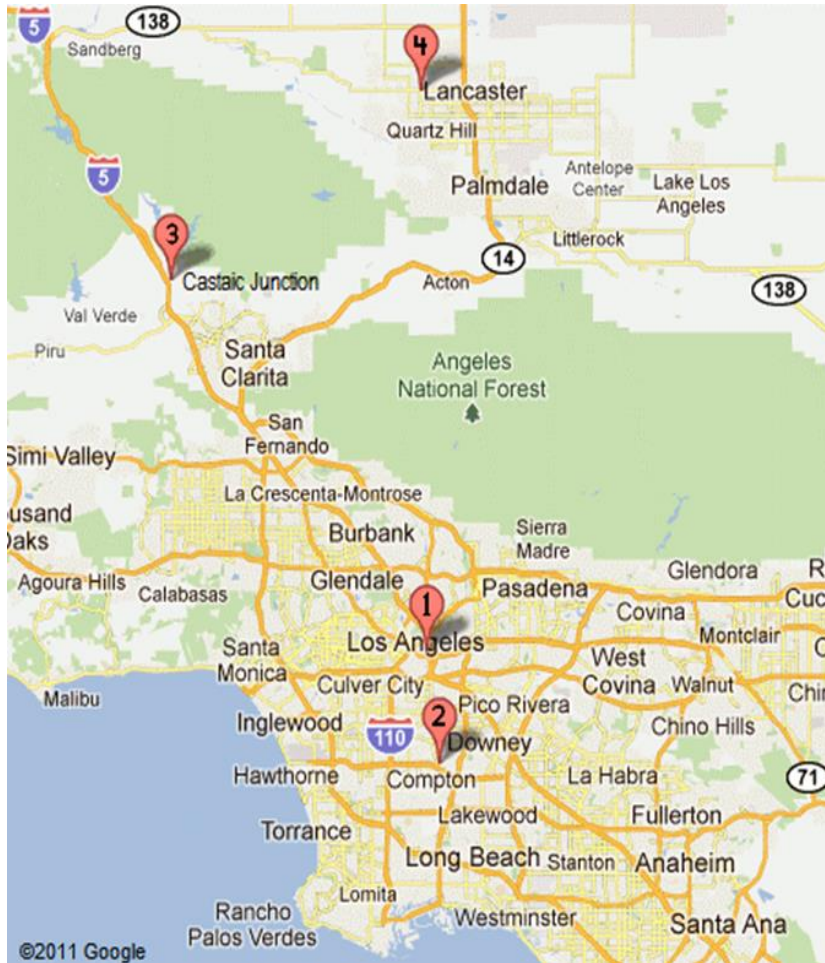
RATED CAPACITY

The Board of State and Community Corrections (BSCC) is a government body which recommends capacity limits for county jails. BSCC conducts biennial jail inspections; LASD was rated in April 2016.

Board of State and Community Corrections				
LASD Custody Facilities	BSCC Rated Capacity	Quarterly Facility ADIP	Above BSCC Rated Capacity	% Over BSCC Capacity
Men's Central Jail	3,529	4,350	821	23%
Twin Towers Correctional Facility	2,484	3,300	816	33%
Century Regional Detention Facility	1,708	2,129	421	25%
Pitchess Detention Center – East	926	63	-863	-93%
Pitchess Detention Center – North	832	1,455	623	75%
Pitchess Detention Center – South	844	1,387	543	64%
North County Correctional Facility	2,214	3,648	1,434	65%

Total BSCC Rated Capacity*	Quarterly Facility ADIP	Total Above BSCC Rated Capacity	Total % Over BSCC Capacity	Total % Over BSCC Capacity Excluding East Facility
12,537	16,333	3,796	30%	40%

*Statistical data gathered from *Board of State and Community Corrections Inspection Report 11/2016*.



LA County Jail Facilities

1

- Men's Central Jail (MCJ)
- Twin Towers Correctional Facility (TTCF)
- Los Angeles County Medical Center (LCCM)
- Correctional Treatment Center (CTC)
- Inmate Reception Center (IRC)

2

- Century Regional Detention Facility (CRDF)

3

- Pitchess Detention Center (PDC)
- PDC East Facility
- PDC North Facility
- PDC South Facility
- North County Correctional Facility (NCCF)

4

- Mira Loma Detention Center (MLDC)

JAIL HOUSING FACILITIES

MEN'S CENTRAL JAIL TOTAL INMATE POPULATION 2018					
Security Level	October	November	December	Quarterly Average	% of Population
Security Level Low 1-4	872	910	884	889	20%
Security Level Medium 5-7	2,841	2,830	2,680	2,783	64%
Security Level High 8-9	717	684	690	697	16%
FACILITY TOTAL	4,430	4,424	4,254	4,369	100%
°SUB POPULATION HOUSED THROUGHOUT FACILITY					
Housing Type	October	November	December	Quarterly Average	
*Administratively Segregated Inmates (K-10)	344	52	46	147	
> Administratively Segregated Inmates (K-1)	15	16	19	17	
**Discipline	17	20	22	20	
General Population on Psychotropic Meds	779	771	768	773	
Inmate Workers	960	970	926	952	
LGBT (K-6 G) Inmates	368	395	370	378	
Medical/Clinic	386	357	340	361	
^Other (K-6T/B/C)	175	170	180	175	
Pro-Per	80	76	68	75	
School Housing (EBI)	340	344	334	339	
MOH (H.O.P.E. Program)	29	29	22	27	
Sexually Violent Predators	9	10	9	9	
Sex Crimes Against Children (K-6 Y) Inmates	262	260	236	253	
^^Developmentally Disabled	14	15	15	15	

° Sub population housed throughout facility includes those who are classified with special housing needs and are included in the total inmate population. An inmate may belong to more than one subpopulation

*K-10-Administratively segregated for various reasons including danger to self or others. The New Special Handle Codes, 17,18,19 were implemented in November 2018, resulting in a re-classification of the K10 Special Handle numbers.

>K-1 Law Enforcement related in custody

^ K-6T Contempt of court, K6B threatened by others, K-6C protective custody

**Majority of discipline inmates are now housed at TTCF

^^ Developmentally Disabled inmates were moved to MCJ from TTCF in January 2018.

** Statistical data are averages gathered from Facility Count Sheet every Tuesday.

**TWIN TOWERS CORRECTIONAL FACILITY
TOTAL INMATE POPULATION**

2018

Security Level	October	November	December	Quarterly Average	% of Population
Security Level Low 1-4	566	606	600	591	18%
Security Level Medium 5-7	2,164	2,142	2,128	2,145	64%
Security Level High 8-9	610	616	580	602	18%
Facility Total	3,340	3,364	3,308	3,338	100%

°SUB POPULATION HOUSED THROUGHOUT FACILITY

Housing Type	October	November	December	Quarterly Average
* Administratively Segregated Inmates (K-10)	156	63	57	92
^ Administratively Segregated Inmates (K-1)	1	1	0	1
** Administratively Segregated Inmates (K-6B)	29	26	28	28
American's With Disabilities (ADA)	379	368	355	367
Discipline	86	77	73	79
Female General Population	13	16	18	16
Female Medical (CTC)	11	13	15	13
General Population on Psychotropic Meds Security Level 1-4	24	29	32	28
General Population on Psychotropic Meds Security Level 5-7	128	156	176	153
General Population on Psychotropic Meds Security Level 8-9	65	67	66	66
***Inmate Workers	0	0	0	0
LGBT (K-6 G) Inmates	80	78	86	81
Male School Housing (EBI)	408	379	379	389
Medical (CTC)	105	106	109	107
Mentally III – High Observation Housing (HOH)	938	1,042	1,048	1,009
Mentally III – Moderate Observation / Service Area (MOH)	2,555	2,451	2,437	2,481
Mentally III – Moderate Observation Housing (MOH) School Housing (EBI)	408	379	379	389
Mentally III – Moderate Observation Housing (MOH) Sex Crimes Against Children (K-6 Y) Inmates	138	136	129	134

° Sub population housed throughout facility includes those who are classified with special housing needs and are included in the total inmate population. An inmate may belong to more than one subpopulation

***K-10-Administratively segregated for various reasons including danger to self or others. The New Special Handle Codes, 17,18,19 were implemented in November 2018, resulting in a re-classification of the K10 Special Handle numbers.**

****K-6B-Administratively segregated are at risk of assault in GP housing**

^Related to Law Enforcement-segregated from general population for safety reasons

***** Inmate workers moved to MCJ because of ADA construction project in T271**

****** ADA extended program therefore more participants beginning October, 2017.**

******* EBI extended MOH program therefore more participants beginning October, 2017.**

******* Statistical data are averages gathered from Facility Count Sheet every Tuesday.**

**CENTURY REGIONAL DETENTION CENTER
TOTAL INMATE POPULATION**

2018

Security Level	October	November	December	Quarterly Average	% of Population
Security Level Low 1-4	610	637	609	619	30%
Security Level Medium 5-7	1,160	1,185	1,145	1,163	56%
Security Level High 8-9	310	296	290	299	14%
Facility Total	2,080	2,118	2,044	2,081	100%

°SUB POPULATION HOUSED THROUGHOUT FACILITY

Housing Type	October	November	December	Quarterly Average
Administratively Segregated Inmates (K-10)	39	16	15	23
Discipline	35	28	24	29
Inmate Workers	308	333	323	321
Medical/Clinic	6	5	5	5
Mentally III – High Observation Housing (HOH)	282	266	272	273
Mentally III – Moderate Observation / Service Area (MOH)	379	392	365	379
Other (K-6 B)	2	2	2	2
School Housing (EBI)	514	504	484	501
Sex Crimes Against Children (K-6 Y) Inmates	10	8	7	8

°Sub population housed throughout facility includes those who are classified with special housing needs and are included in the total inmate population.

An inmate may belong to more than one subpopulation

^K-10-Administratively segregated for various reasons including danger to self or others

** Statistical data are averages gathered from Facility Count Sheet every Tuesday.*

PITCHESS DETENTION CENTER – EAST FACILITY TOTAL INMATE POPULATION 2018					
Security Level	October	November	December	Quarterly Average	% of Population
Security Level Low 1-4	51	56	50	52	83%
Security Level Medium 5-7	10	13	11	11	17%
Security Level High 8-9	0	0	0	0	0%
Facility Total	61	69	61	63	100%
°SUB POPULATION HOUSED THROUGHOUT FACILITY					
HOUSING TYPE	October	November	December	Quarterly Average	
Fire Camp Security Levels 1-4	51	56	50	52	
Fire Camp Security Levels 5-7	10	13	11	11	

°Sub population housed throughout facility includes those who are classified with special housing needs and are included in the total inmate population. An inmate may belong to more than one subpopulation

* Statistical data are averages gathered from Facility Count Sheet every Tuesday.

PITCHESS DETENTION CENTER – NORTH TOTAL INMATE POPULATION 2018					
Security Level	October	November	December	Quarterly Average	% of Population
Security Level Low 1-4	229	231	208	223	15%
Security Level Medium 5-7	1,177	1,167	1,196	1,180	82%
Security Level High 8-9	40	50	45	45	3%
Facility Total	1,446	1,448	1,449	1,448	100%
°SUB POPULATION HOUSED THROUGHOUT FACILITY					
HOUSING TYPE	October	November	December	Quarterly Average	
Discipline	25	25	23	24	
Inmate Workers	93	94	94	94	
School Housing GP (EBI) Security Levels 1-7	278	280	281	280	
School Housing (EBI) Security Levels 1-7 K6y	95	94	93	94	
Sex Crimes Against Children Inmates (K-6 Y) Security Level 1-7	282	282	281	282	
Mentally Ill - Moderate Observation Housing (MOH)	302	301	301	301	

°Sub population housed throughout facility includes those who are classified with special housing needs and are included in the total inmate population

An inmate may belong to more than one subpopulation

♦ Inmates housed at North Facility for disciplinary reasons

* Statistical data are averages gathered from Facility Count Sheet every Tuesday.

**PITCHESS DETENTION CENTER - SOUTH
TOTAL INMATE POPULATION**

Security Level	2018			Quarterly Average	% of Population
	October	November	December		
Security Level Low 1-4	479	481	476	479	35%
Security Level Medium 5-7	933	903	888	908	65%
Security Level High 8-9	0	0	0	0	0%
FACILITY TOTAL	1,412	1,384	1,364	1,387	100%

°SUB POPULATION HOUSED THROUGHOUT FACILITY

Housing Type	October	November	December	Quarterly Average
Back on Track Security Level 1-7	74	67	64	68
School Housing (EBI) Security Level 1-7	421	340	418	393
Inmate Workers Security Level 1-7	484	464	444	464

°Sub population housed throughout facility includes those who are classified with special housing needs and are included in the total inmate population. An inmate may belong to more than one subpopulation

** Statistical data are averages gathered from Facility Count Sheet every Tuesday.*

**NORTH COUNTY CORRECTIONAL FACILITY
TOTAL INMATE POPULATION**

Security Level	2018			Quarterly Average	% of Population
	October	November	December		
Security Level Low 1-4	587	607	618	604	17%
Security Level Medium 5-7	2,197	2,183	2,168	2,183	60%
Security Level High 8-9	844	827	792	821	23%
Facility Total	3,628	3,617	3,578	3,608	100%

°SUB POPULATION HOUSED THROUGHOUT FACILITY

Housing Type	October	November	December	Quarterly Average
Administratively Segregated Inmates (K-10) Security Level 1-8	1	0	0	0
Administratively Segregated Inmates (K6-B) Security Level 1-8	120	114	120	118
Discipline Security Level 1-7	158	178	169	168
Inmate Workers Security Level 1-7	737	743	750	743
Medical/Clinic Security Level 1-7	12	13	11	12
School Housing (EBI) Security Level 1-8	181	184	186	184
Veterans	54	53	51	53

°Sub population housed throughout facility includes those who are classified with special housing needs and are included in the total inmate population.

An inmate may belong to more than one subpopulation

**K-10-Administratively segregated for various reasons including danger to self or others*

*** Statistical data are averages gathered from Facility Count Sheet every Tuesday*

POPULATION OVERVIEW

INMATE POPULATION DEMOGRAPHICS

Racial demographics this quarter indicate the three most populous racial groups within the LA County Jail for both male and female offenders are Hispanic (52%), Black (30%), and White (15%).

COMBINED	October 2018		November 2018		December 2018		Quarterly Average	Quarterly %
	Race	Population	%	Population	%	Population		
Hispanic	8,526	52%	8,556	52%	8,343	52%	8474	52%
Black	5,004	30%	4,980	30%	4,942	30%	4975	30%
White	2,550	15%	2,570	15%	2,479	15%	2533	15%
All Others	557	3%	556	3%	543	3%	552	3%
Chinese	45	0%	48	0%	46	0%	47	0%
Filipino	27	0%	27	0%	24	0%	26	0%
Pacific Islanders	17	0%	16	0%	16	0%	16	0%
Japanese	4	0%	4	0%	6	0%	5	0%
American Indian	17	0%	19	0%	16	0%	18	0%
Total	16,747	100%	16,776	100%	16,415	100%	16,646	100%

MALE	October 2018		November 2018		December 2018		Quarterly Average	Quarterly %
	Race	Population	%	Population	%	Population		
Hispanic	7,587	53%	7,582	53%	7,412	53%	7526	53%
Black	4,342	30%	4,314	30%	4,272	30%	4309	30%
White	2,072	14%	2,100	14%	2,034	14%	2069	14%
All Others	487	3%	489	3%	478	3%	485	3%
Chinese	39	0%	41	0%	42	0%	41	0%
Filipino	24	0%	24	0%	22	0%	23	0%
Pacific Islanders	16	0%	14	0%	12	0%	14	0%
Japanese	3	0%	3	0%	5	0%	4	0%
American Indian	17	0%	18	0%	15	0%	17	0%
Total	14,587	100%	14,585	100%	14,292	100%	14,488	100%

FEMALE	October 2018		November 2018		December 2018		Quarterly Average	Quarterly %
	Race	Population	%	Population	%	Population		
Hispanic	939	44%	974	46%	931	44%	948	44%
Black	662	31%	666	30%	670	32%	666	31%
White	478	22%	470	21%	445	21%	464	22%
All Others	70	3%	67	3%	65	3%	67	3%
Chinese	6	0%	7	0%	4	0%	6	0%
Filipino	3	0%	3	0%	2	0%	3	0%
Pacific Islanders	1	0%	2	0%	4	0%	2	0%
Japanese	1	0%	1	0%	1	0%	1	0%
American Indian	-	0%	1	0%	1	0%	1	0%
Total	2,160	100%	2,191	100%	2,123	100%	2,158	100%

*Statistical data are averages gathered from Custody Division Daily Briefing Report every Tuesday.

INMATE POPULATION OFFENDER AGE GROUPS

The 26-34 year old cohort was the most frequently represented age group within the jail population this quarter, followed by the 18-25 year old cohort.

COMBINED	October 2018		November 2018		December 2018		Quarterly Average	Quarterly %
	Age Group	Population	%	Population	%	Population		
18 to 25	3,938	23%	3,910	23%	3,788	23%	3,879	23%
26 to 34	5,632	34%	5,738	34%	5,573	34%	5,648	34%
35 to 39	2,270	14%	2,269	14%	2,233	14%	2,257	14%
40 to 44	1,568	9%	1,553	9%	1,534	9%	1,552	9%
45 & Older	3,339	20%	3,306	20%	3,288	20%	3,311	20%
Total	16,747	100%	16,776	100%	16,415	100%	16,646	100%

MALE	October 2018		November 2018		December 2018		Quarterly Average	Quarterly %
	Age Group	Population	%	Population	%	Population		
18 to 25	3,458	24%	3,428	24%	3,310	24%	3,398	24%
26 to 34	4,849	33%	4,926	34%	4,807	34%	4,861	34%
35 to 39	1,931	13%	1,936	13%	1,924	13%	1,930	13%
40 to 44	1,386	10%	1,365	9%	1,335	9%	1,362	9%
45 & Older	2,963	20%	2,930	20%	2,917	20%	2,937	20%
Total	14,587	100%	14,585	100%	14,292	100%	14,488	100%

FEMALE	October 2018		November 2018		December 2018		Quarterly Average	Quarterly %
	Age Group	Population	%	Population	%	Population		
18 to 25	480	23%	482	22%	478	23%	480	23%
26 to 34	783	36%	812	37%	766	36%	787	36%
35 to 39	339	16%	333	15%	309	15%	327	15%
40 to 44	182	8%	188	9%	199	9%	190	9%
45 & Older	376	17%	376	17%	371	17%	374	17%
Total	2,160	100%	2,191	100%	2,123	100%	2,158	100%

*Statistical data are averages gathered from *Custody Division Daily Briefing Report* every Tuesday.

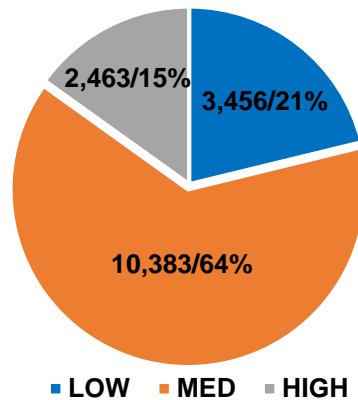
CLASSIFICATION AND RE-CLASSIFICATION

LASD utilizes the Northpointe Classification system to assign security levels to inmates. The security levels guide where an inmate will be housed based on their individual risk for in-custody misconduct. Lower security housing areas offer more programming and privileges to better prepare the inmates for release. Higher security housing is more restricted and therefore limited in what programs are offered, due to potential risk of serious misconduct and/or escape by the high security level inmate population.

*Jail Population by Security Level				
Month	Low	Medium	High	Total
October	3,394	10,487	2,521	16,402
November	3,528	10,437	2,473	16,438
December	3,445	10,225	2,397	16,067
Average	3,456	10,383	2,463	16,302
Percent	21%	64%	15%	100%

*K-10 (Ad-Seg) inmates are re-evaluated for reclassification of security level during the re-class process which occurs every 45 days.
 This chart only includes inmates housed in LASD Type II facilities. Does not include inmates housed in alternative custody beds

Jail Population by Security Level



The pie graph above depicts the average number of inmates housed this quarter by security level. The percentage is calculated to the Facility ADIP for this quarter (16,302).

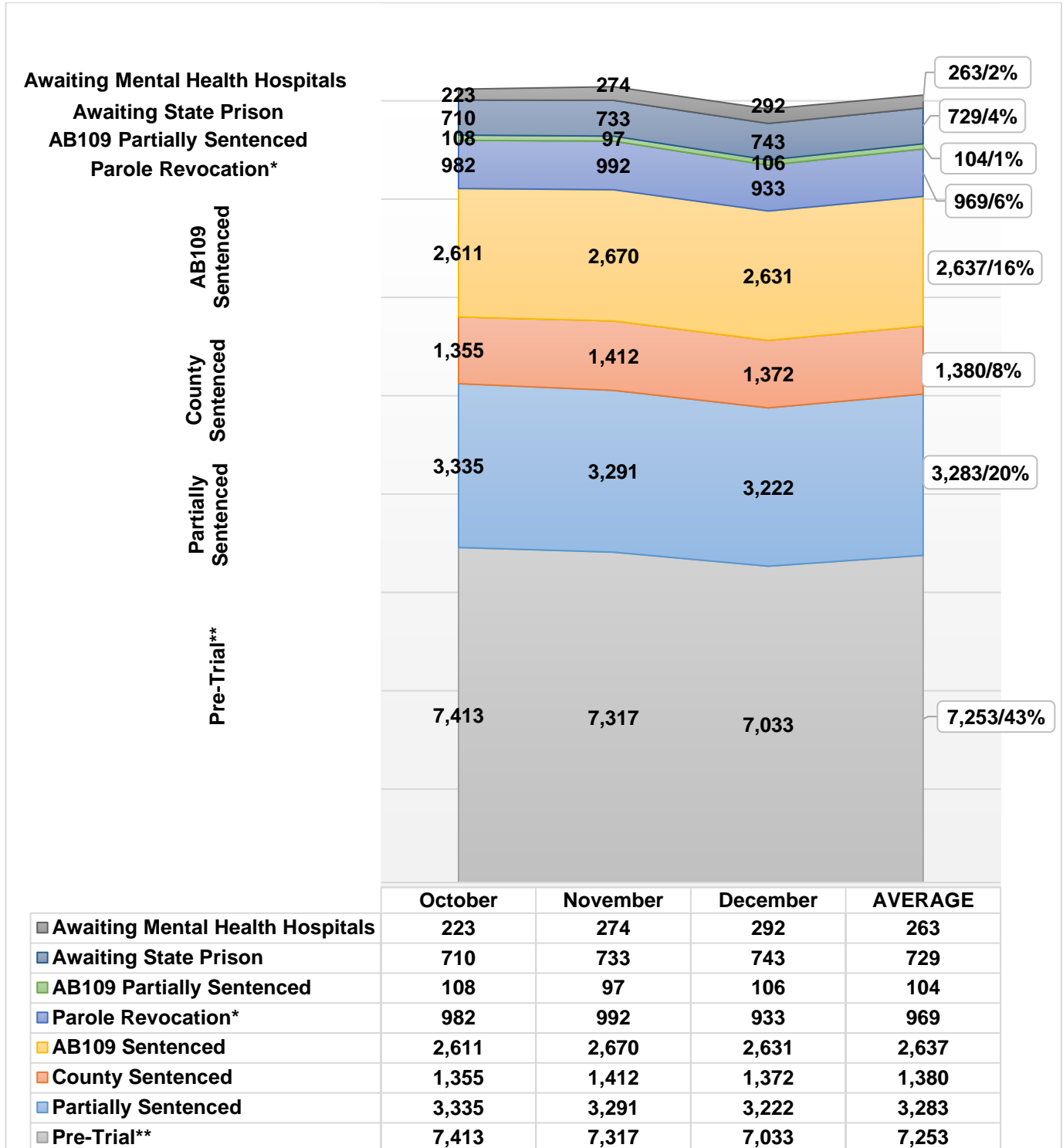
Re-Classification Statistics

Inmates are periodically reclassified (approximately every 45 days) to determine if their security level is still appropriate or should be reduced or increased based upon their conduct.

	ADIP	Disciplinary	Inmate Request	Legal Status	Other	Periodic	Sentence	Staff	TOTALS	% of ADIP
October	16,732	602	0	17	6	5,868	1,617	32	8,142	49%
November	16,758	528	10	0	5	5,027	926	31	6,527	39%
December	16,335	615	10	19	0	5,233	788	21	6,686	41%
Total	1,745	20	36	11	16,128	3,331	84	21,355		
Average	582	7	12	4	5,376	1,110	28	7,118		

Inmate Population Breakdown

The inmate population consists of various categories of inmates in broad groupings, including: pre-trial, traditional county sentenced, AB 109 sentenced, AB109 sentenced with additional charges, parole/revocation violators, and those awaiting transfer to State Prison.



* Parole Revocation includes PRCS Revocation 3455, Flash Incarceration 3454 and Inmates with a 3056 hold.

** It should be noted that an inmate who is sentence status 1 (often referred to as "pretrial") could be in trial, or even completed trial, but is just not fully sentenced. Most inmates in sentence status 1 will be pretrial.

INMATE POPULATION BREAKDOWN CONTINUED

- **AWAITING STATE PRISON**

- During this quarter, an average of 729 inmates were awaiting transfer to state prison, some while pending trial on other cases.

- **AB109 PAROLE AND PROBATION VIOLATORS**

- An average of 969 AB109 inmates were in custody for violating their parole or probation.

- **AB109 SENTENCED**

- An average of 2,637 inmates were in custody, sentenced under AB109.

- **TRADITIONAL COUNTY SENTENCED INMATE POPULATION**

- The average daily count for the traditional county sentenced (TCS) population was 1,380 approximately 8% of the inmate population.

- **PRE-TRIAL INMATE POPULATION**

- During this quarter, there were approximately 24,961 new bookings into the LA County Jail. Forty-four percent (44%) of the average daily inmate population (16,608) was comprised of inmates who were pre-trial. Pre-trial inmates are those who have an open case and have not been sentenced by the courts.*

** It should be noted that an inmate who is sentence status 1 (often referred to as "pretrial") could be in trial, or even completed trial, but is just not fully sentenced. Most inmates in sentence status 1 will be pretrial.*

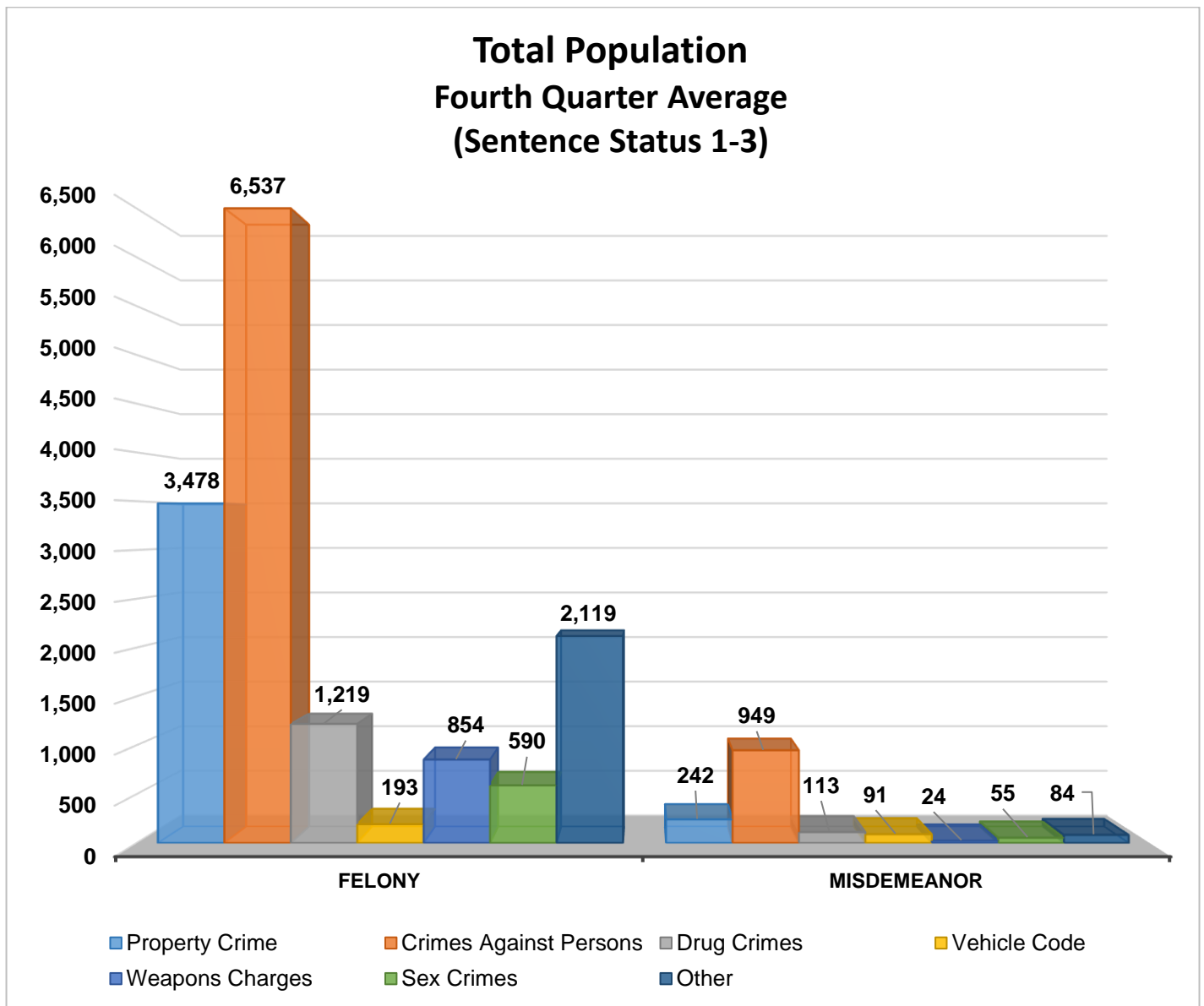
CRIME CLASSIFICATION STATISTICS

The chart below provides an average breakdown for the entire inmate population, both sentenced and un-sentenced, by arrest category.

Population (Sentence Status 1-3)

Arrest Category	Property Crime	Crimes Against Persons	Drug Crimes	Vehicle Code	Weapons Charges	Sex Crimes	Other	Total	Percentage of the Population
Felony	3,478	6,537	1,219	193	854	590	2,119	14,990	91%
Misdemeanor	242	949	113	91	24	55	84	1,558	9%
Total	3,720	7,486	1,332	284	878	645	2,203	16,548	100%

**Information contained is based on a snapshot of the daily inmate population purge every Tuesday.*



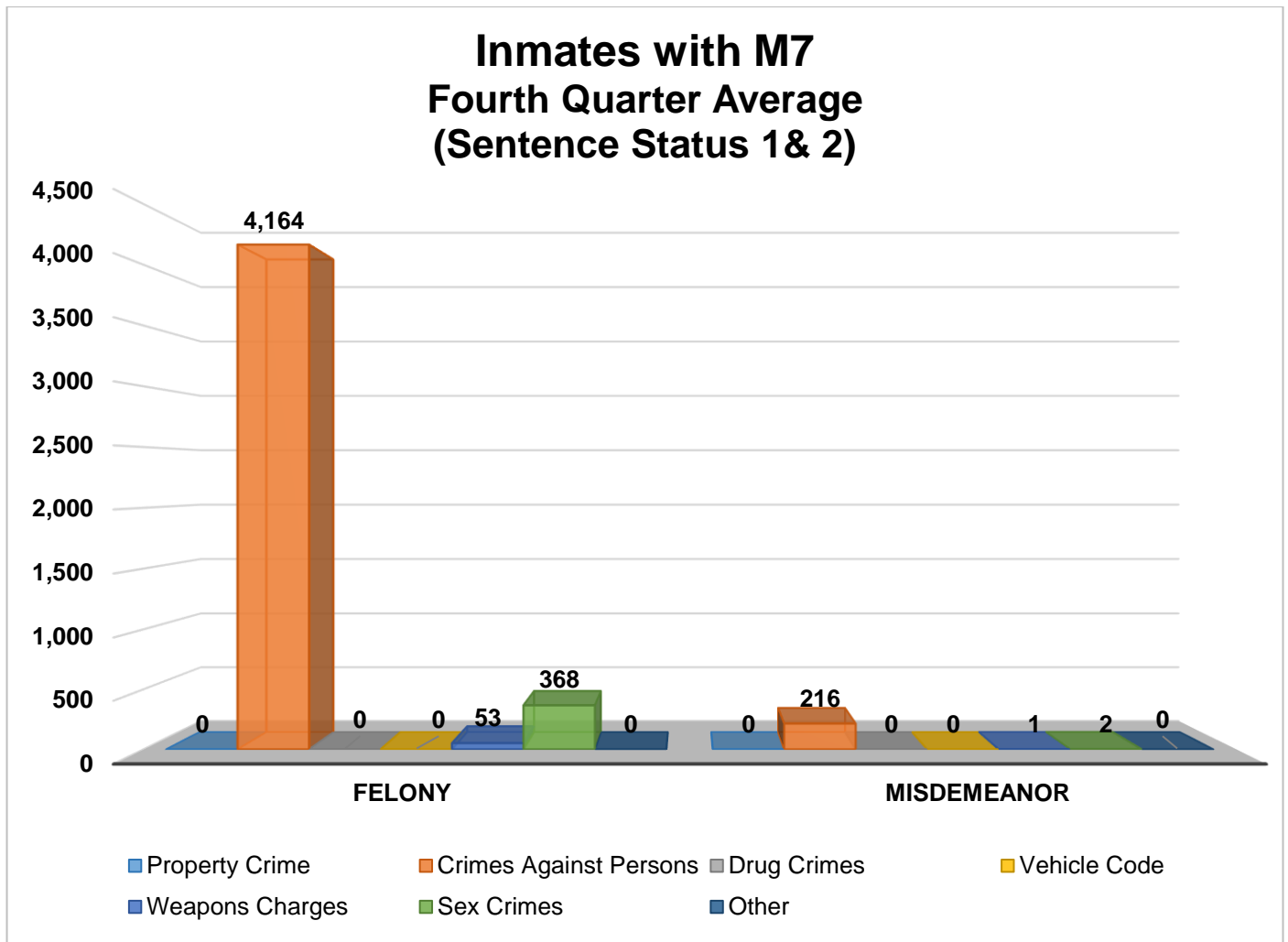
INMATES WITH ASSAULTIVE/VIOLENT CHARGES (M7)

The chart below provides a breakdown for the inmate population with M7 charges, sentence status one and two, by arrest category.

Inmates with Assaultive/Violent Charges (M7) (Sentence Status 1 & 2)

Arrest Category	Property Crime	Crimes Against Persons	Drug Crimes	Vehicle Code	Weapons Charges	Sex Crimes	Other	Total	Percentage of the pre-trial and partially sentenced Population
Felony	0	4,164	0	0	53	368	0	4,585	95%
Misdemeanor	0	216	0	0	1	2	0	219	5%
Total	0	4,380	0	0	54	370	0	4,804	100%

**Information contained is based on a snapshot of the daily inmate population purge every Tuesday.*

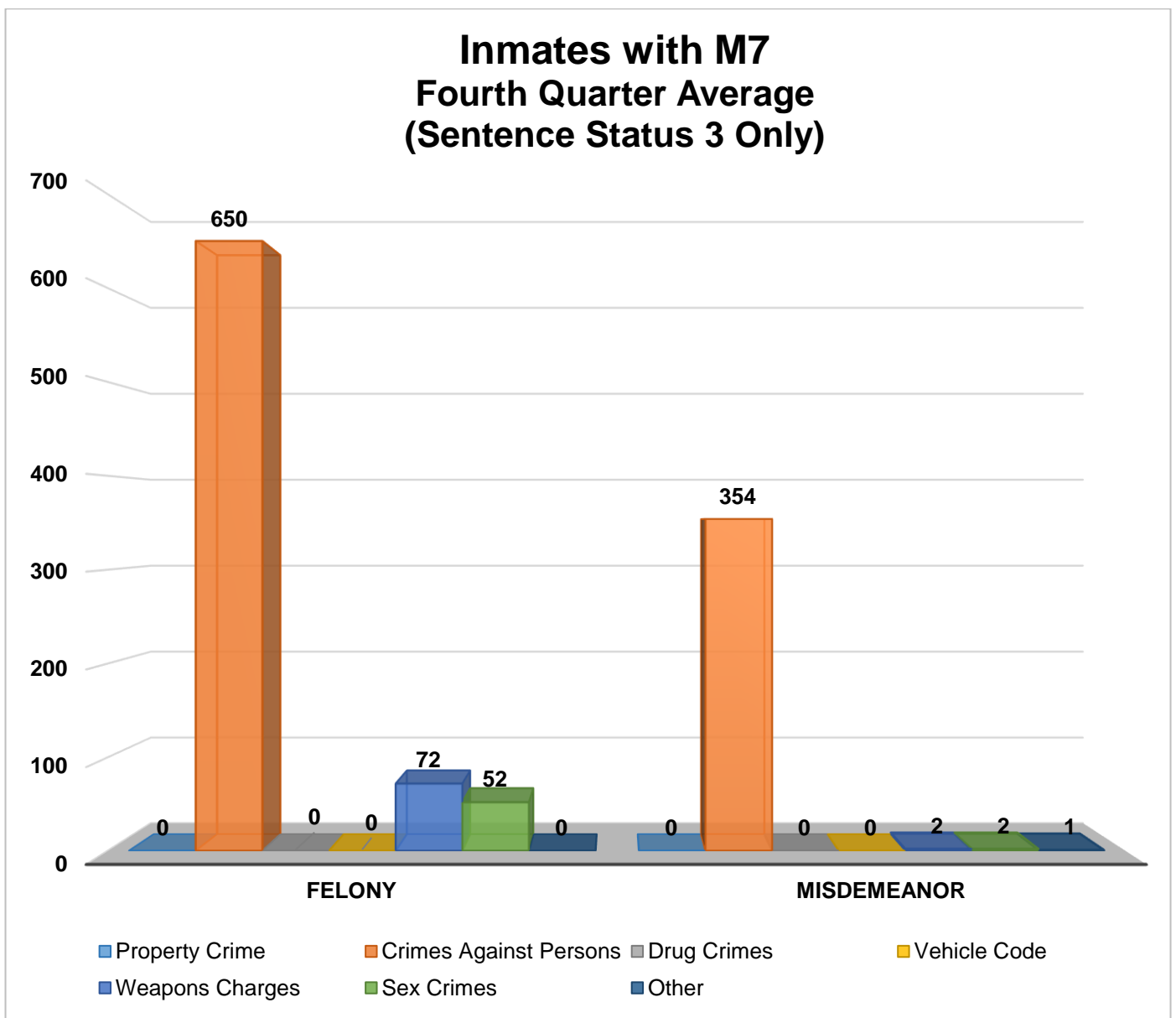


INMATES WITH ASSAULTIVE/VIOLENT CHARGES (M7) CONTINUED

Inmates with Assaultive/Violent Charges (M7) (Sentence Status 3 Only)

Arrest Category	Property Crime	Crimes Against Persons	Drug Crimes	Vehicle Code	Weapons Charges	Sex Crimes	Other	Total	Percentage of the Sentenced Population
Felony	0	650	0	0	72	52	0	774	68%
Misdemeanor	0	354	0	0	2	2	1	359	32%
Total	0	1,004	0	0	74	54	1	1,133	100%

**Information contained is based on a snapshot of the daily inmate population purge every Tuesday.*



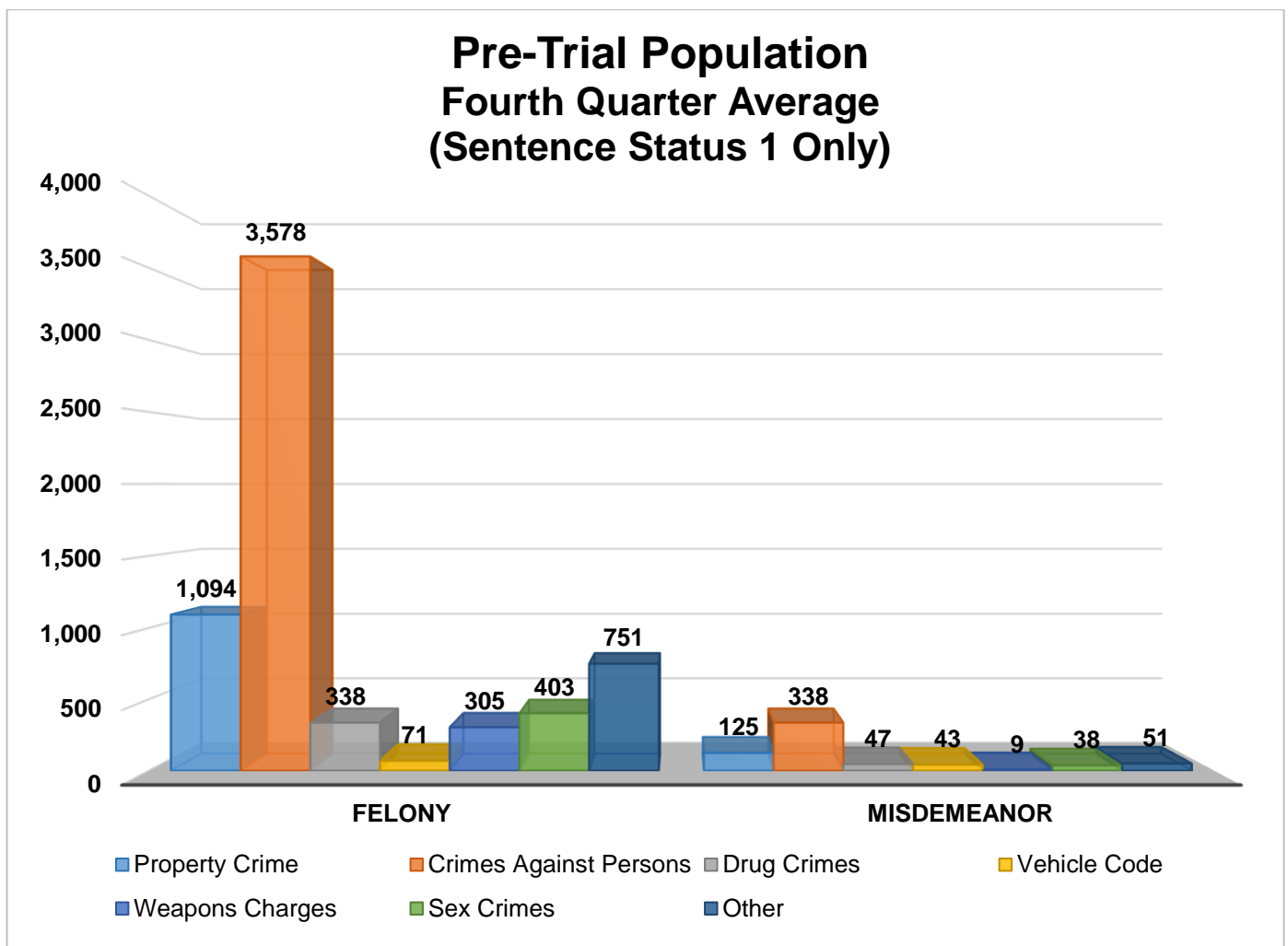
PRE – TRIAL POPULATION

The chart below provides a breakdown for the pre-trial inmate population who are awaiting court disposition.

Pre-trial Population (Sentence Status 1 only)

Arrest Category	Property Crime	Crimes Against Persons	Drug Crimes	Vehicle Code	Weapons Charges	Sex Crimes	Other	Total	Percentage of the pre-trial Population
Felony	1,094	3,578	338	71	305	403	751	6,540	91%
Misdemeanor	125	338	47	43	9	38	51	651	9%
Total	1,219	3,916	385	114	314	441	802	7,191	100%

**Information contained is based on a snapshot of the daily inmate population purge every Tuesday.*



** It should be noted that an inmate who is sentence status 1 (often referred to as "pretrial") could be in trial, or even completed trial, but is just not fully sentenced. Most inmates in sentence status 1 will be pretrial.*

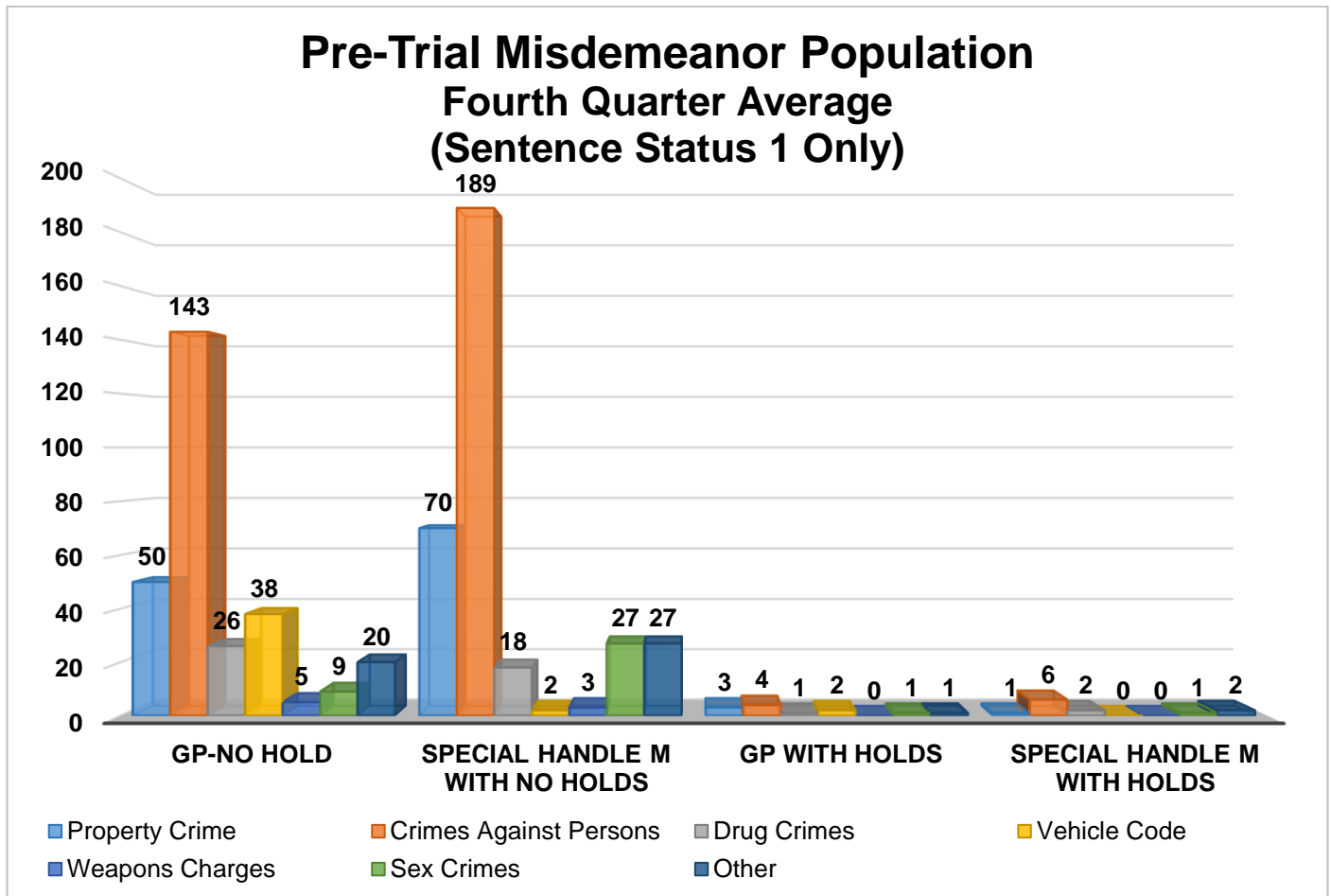
PRE – TRIAL MISDEMEANOR POPULATION

The chart below provides a breakdown for the pre-trial inmate population, incarcerated for a misdemeanor, who have not yet been convicted. “Holds” indicates the inmates are being held on a matter pending from an outside agency.

Pre-trial Misdemeanor Population (Sentence Status 1 only)

Arrest Category	Property Crime	Crimes Against Persons	Drug Crimes	Vehicle Code	Weapons Charges	Sex Crimes	Other	Total	Percentage of the pre-trial Population
GP No Hold	50	143	26	38	5	9	20	291	44%
Special Handle M with No Holds	70	189	18	2	3	27	27	336	52%
GP with Holds	3	4	1	2	0	1	1	12	2%
Special Handle M with Holds	1	6	2	0	0	1	2	12	2%
Total	124	342	47	42	8	38	50	651	100%

**Information contained is based on a snapshot of the daily inmate population purge every Tuesday.*



** It should be noted that an inmate who is sentence status 1 (often referred to as “pretrial”) could be in trial, or even completed trial, but is just not fully sentenced. Most inmates in sentence status 1 will be pretrial.*

PRE-TRIAL BAIL HOLDS

The numbers below represent the average number of inmates in LASD custody eligible for bail with the noted bail amounts.

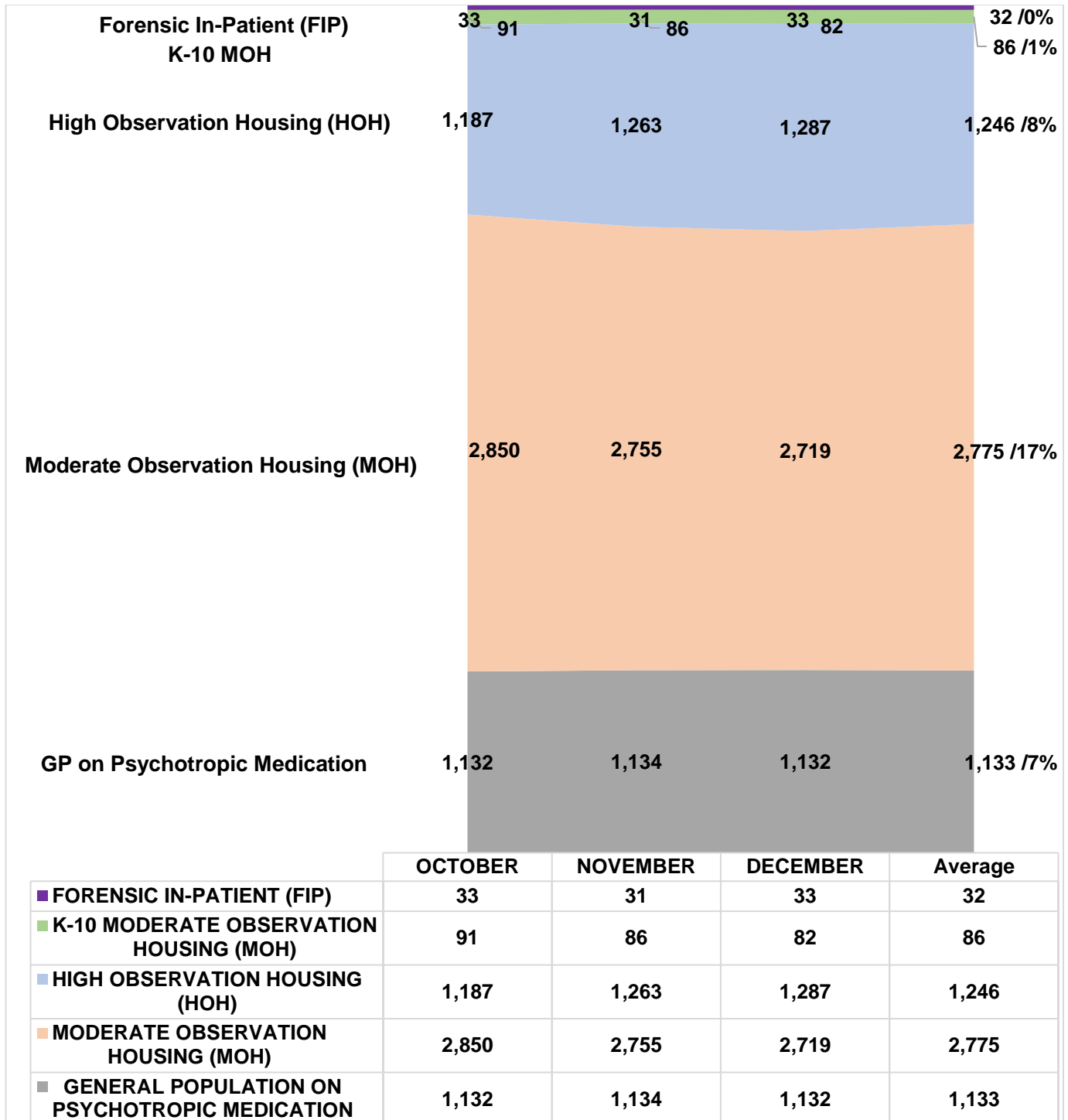
Sentence Status 1	October			November			December			Quarter 4 Average		
	With Hold	No Hold	Total	With Hold	No Hold	Total	With Hold	No Hold	Total	With Hold	No Hold	Total
\$1 - \$25,000	17	235	252	14	223	237	13	223	236	15	227	242
\$25,001 - \$26,000	3	27	30	1	21	22	0	19	19	1	22	23
\$26,001 - \$50,000	26	614	640	25	615	640	26	585	611	26	605	631
\$50,001 - \$100,000	35	806	841	37	823	860	36	769	805	36	799	835
\$100,001 - \$500,000	64	1,285	1,349	66	1,281	1,347	61	1,252	1,313	64	1,273	1,337
\$500,001 - \$1 Million	70	1,374	1,444	62	1,352	1,414	58	1,338	1,396	63	1,355	1,418
No Bail	457	2,334	2,791	435	2,318	2,753	450	2,167	2,617	447	2,273	2,720
Total	672	6,675	7,347	640	6,633	7,273	644	6,353	6,997	652	6,554	7,206

**The bail reflected is not necessarily the bail at the time of arrest. Once remanded by the court, the bail may change.*

** Information encompassed in this report/ document depicts data related to a specific date and time. Data may differ based on numerous factors related to an inmate's status, disposition, facility, etc. Information may differ based on systems queried, archived information, date/ time parameters or numerous other factors. Information in disparate reports should not be combined as data sets may be inconsistent in queries and responses.*

MENTAL HEALTH INMATE POPULATION

This quarter the overall inmate population was 16,608; the mental health population accounted for 32 percent of this population. Currently, inmates identified with Mental Health needs requiring specialized housing moderate or high observation housing, account for 25 percent of the overall population. This remaining 7 percent have been treated and continue to receive psychotropic medication while housed in general population.



*Information contained is based on a snapshot of the daily inmate population purge every Tuesday.

MISDEMEANOR INCOMPETENT TO STAND TRIAL (MIST)

The Los Angeles County Jail houses inmates who are awaiting trial for misdemeanor charges who have been found to be incompetent to stand trial. This quarter the average number of inmates on MIST is 231.

Misdemeanor Incompetent to Stand Trial (MIST)									
October			November			December			Quarterly Average
Male	Female	Total	Male	Female	Total	Male	Female	Total	
166	76	242	168	68	236	159	55	214	231

AMERICANS WITH DISABILITIES ACT (ADA)

ADA Housing is used to accommodate inmates with mobility limitations and/or physical disabilities. This quarter the average number of inmates requiring ADA is 379 which is less than last quarter's (447) total.*

Americans With Disabilities Act (ADA)				
Housing Area	October	November	December	Quarterly Average
Central Regional Detention Center	32	36	36	34
Twin Towers	264	254	267	262
Men's Central Jail	86	76	80	81
LAC/USC Medical Center	3	2	2	3
Monthly Total	385	368	385	379

* Data is based on special handle codes from October, 2018.

** Beginning January, 2018, TTCF added Module 272, and MCJ added Modules 7100 & 7200 for ADA inmates.

*** Information contained is based on a snapshot of the daily inmate population purge every Tuesday.

MEDICAL HOUSING

Medical Outpatient/Specialty Housing (MOSH) is provided to inmates who require a level of medical treatment beyond that of stabilized medication distribution (pill call). The MOSH area in MCJ is also used to house inmates with mobility issues.

Additional Medical Housing – Not ADA Designated				
Housing Area	October	November	December	Quarterly Average
Correctional Treatment Center (CTC)	105	106	109	107
Los Angeles County Medical Center (LCMC)	20	20	15	18
*MCJ Medical/Clinic	386	357	340	361
Monthly Total	511	483	464	486

*Information contained is based on a snapshot of the daily inmate population purge every Tuesday.

IN-CUSTODY PROGRAMS

LA County Inmate In-Custody Programs

The Los Angeles County Jail offers several in-custody programs. Programs vary from a number of in-custody work assignments, vocational job training, education, and life skill classes, as well as fire camp training and California Department of Corrections and Rehabilitation fire camp placement for AB109 inmates. Various programs award sentenced inmates additional time credits for their participation pursuant to the California Penal Code:

CREDIT EARNINGS

Program	Penal Code	Credit Earned	Type of Inmate
Sentenced GT/WT	4019 PC	Day-for-Day (1:1)	All Sentenced Inmates
Conservation	4019.1 PC	One and one half-for One (1.5:1)	All Sentenced Inmates
Fire Camp	4019.2 PC	Two-for-One (2:1)	AB109 Sentenced Inmates
Milestone	4019.4 PC	Up to 6 weeks per year	AB109 Sentenced Inmates

CONSERVATION WORK PROGRAM (CWP)

The Conservation Work Program (CWP) requires inmates to complete their adjusted sentence while working in various job classifications, giving them the skills and work discipline necessary to increase their chances of success once released. Effective January 2015, all sentenced offenders, including Traditional County Sentenced (TCS) inmates are eligible to receive credits pursuant to Penal Code Section 4019.1. For this quarter, approximately 2,495 offenders (15% of the population) participated in CWP.

CONSERVATION WORK PROGRAM (CWP)				
Inmate Type	October	November	December	Quarterly Average
Inmates Participated In Programs	2,540	2,463	2,483	2,495

**Information contained is based on a snapshot of the daily inmate population purge every Tuesday.*

EDUCATION BASED INCARCERATION PROGRAMS (EBI-MILESTONE)

The Education Based Incarceration Program (EBI) uses traditional and nontraditional education which is designed to reduce incarceration by increasing the educational, civic, social, economic, and life skills of its participants. Offenders who are sentenced are eligible to receive credits pursuant to Penal Code 4019.4. For this quarter, a total of 925 Milestone credits were awarded.

FIRE CAMP TRAINING PROGRAM

Fire Camp Training and California Institute for Women (CIW/CSCR) training are aligned under the Conservation Work Program (CWP). This program is the first step of training before an inmate may participate in a State facilitated Fire Camp Program. Offenders who are sentenced under AB109 are eligible to receive credits pursuant to Penal Code 4019.1. The average number of inmates enrolled in the Fire Camp training program for this quarter was 67.

FIRE CAMP TRAINING CAMP				
Housing Type	October	November	December	Quarterly Average
PDC Fire Camp Training (Men)	62	69	60	64
CIW Fire Camp Training (Women)	3	4	3	3
Monthly Totals	65	73	63	67

CALIFORNIA DEPARTMENT OF CORRECTIONS AND REHABILITATION (CDCR) **FIRE CAMP PROGRAM**

Once an inmate passes all necessary requirements in the Fire Camp Training Program located at PDC East facility, they are transferred to one of five state contracted fire camp sites where they will serve the remainder of their adjusted sentence. Offenders who are sentenced under AB109 are eligible to receive credits pursuant to Penal Code 4019.2. The average number of inmates assigned to CDCR Fire Camps for this quarter was 52.

CDCR FIRE CAMP				
Fire Camp Locations	October	November	December	Quarterly Average
Acton Fire Camp	10	11	11	11
Francisquito Fire Camp	10	8	10	9
Holton Fire Camp	29	25	21	25
Julius Klein Fire Camp	10	6	5	7
Malibu Women's Fire Camp	1	0	0	0
Monthly Totals	60	50	47	52

BACK ON TRACK PROGRAM

The Back on Track (BOT) program began in February 2015 and is overseen by EBI staff. The program delivers education and comprehensive reentry services to offenders before and after a participant is released from jail. The program focuses on the critical time following an inmate's release from jail, by providing the seamless reentry services vital for success, including employment and life skill services. This program is available to inmates who have been sentenced under AB109 and are eligible to receive Milestone credits. They must be enrolled in the program for 18 months—divided into 9 months in-custody and 9 months out-of-custody.

Back On Track	October	November	December	Quarterly Average
South Barrack	72	50	47	56

In-Custody S.T.A.R.T

The jail based START treatment services began at CRDF in February 2016 providing substance use disorder (SUD) treatment services to 50 women on any given day. In May of 2017, the program expanded to treat up to 90 women. In May 2017 services began at MCJ for up to 90 gay and transgender inmates and at PDC South facility treating up to 200 men in general population on any given day. In March 2018, services commenced at TTCF to treat up to 90 men with co-occurring mental health and SUD. Treatment services include screening, clinical assessment, group and individual counseling, case management services, medication assisted treatment, re-entry planning and care coordination with CTU and transportation to community based services post release.

In-Custody S.T.A.R.T (CRDF)	October	November	December	Quarterly Average
Enrolled	66	77	86	76
Completed	0	52	0	17

In-Custody S.T.A.R.T (MCJ)	October	November	December	Quarterly Average
Enrolled	64	70	70	68
Completed	21	29	16	22

In-Custody S.T.A.R.T (PDC)	October	November	December	Quarterly Average
Enrolled	199	184	180	188
Completed	33	27	19	26

In-Custody S.T.A.R.T (TTCF)	October	November	December	Quarterly Average
Enrolled	47	54	65	55
Completed	0	27	0	9

**Services at TTCF began in March 2018.*

ALTERNATIVES TO CUSTODY PROGRAMS

ALTERNATIVES TO CUSTODY PROGRAMS

The Community Transition Unit (CTU), the Community Based Alternatives to Custody Unit (CBAC), and the Compliance Team work together by utilizing a variety of alternatives to custody programming options in an effort to enhance an inmate's chance of success upon release. These programs are conducted in collaboration with local agencies including Community and Faith Based Organizations, Department of Mental Health (DMH), Department of Public Health (DPH), and other organizations. It is the Department's goal to program inmates from intake through re-entry into the community. With this approach, we hope to increase public safety and reduce the rate of recidivism.

Supported by release planning overseen by the CTU, and in partnership with contracted services, inmates are provided re-entry assistance through linkages to services that are initiated while they are in-custody and continue upon release. Through the Alternatives to Custody (ATC) programs, qualifying inmates are afforded the opportunity to complete the remaining portion of their sentence in a community treatment program. Inmates who do not qualify for ATC due to security or other reasons are referred to community providers for re-entry assistance.

The ATC programs include:

Substance Treatment and Reentry Transition (S.T.A.R.T)

The Substance Treatment and Re-entry Transition (START) program is a Department Public Health, Substance Abuse Prevention Control (SAPC) funded program that places eligible male and female inmates into residential substance use disorder (SUD) treatment programs on electronic GPS monitoring as an alternative to custody (ATC) program.

Community Grant Beds

The Community Grant beds are funded through community grants. They work directly with various residential programs approved by LASD, but not affiliated with the START program, and they offer treatment beds for inmates under the ATC program. Several programs cater to specific clientele who fit a specified demographic in regards to age and gender.

Veteran's Administration (VA)

The Veteran's Administration (VA) funds SUD residential treatment, under the ATC program for inmates who are confirmed to be a veteran entitled to VA Benefits. The treatment programs are approved by the VA and are vetted by LASD.

Transitional Case Management Program (TCM)

The Transitional Case Management Program (TCM) is a Department of Public Health (DPH) funded program, whereby DPH employees refer HIV infected inmates to a residential SUD treatment facility, approved and vetted by LASD, under the ATC program.

TARZANA TREATMENT CENTER DMH/SUD PROGRAM

Tarzana Treatment Center, in partnership with LASD, DHS Correctional Health, and the Department of Mental Health, has made available 40 total beds for inmates with a co-occurring mild to moderate mental health diagnosis, and a substance use disorder (SUD). Inmates are identified by DHS Jail Linkage staff and referred to Tarzana treatment for assessment and acceptance. Inmates must still qualify for ATC programming through a validated risk assessment and criminal history review.

MENTAL HEALTH DIVERSION – NORMANDIE VILLAGE/GATEWAY

Normandie Village treats eligible male N3 inmates with mental illness who are a low security risk, and in a stabilized condition. They are selected to complete the remaining 60-180 days of their sentence in a 42 bed community-based Institution for Mental Disease (IMD) step-down facility.

For acceptance into these programs, inmates must volunteer to participate in services and meet the following criteria:

1. Be 18-54 years of age
2. Must have a primary Axis I major psychiatric diagnosis
3. May have a secondary Axis I diagnosis of substance abuse
4. Must not be a registered sex offender
5. Must not have a fire setting history
6. Must be ambulatory
7. Must not have a serious or life-threatening medical problem
8. Must not require treatment in a locked setting
9. Must have applied for SSI

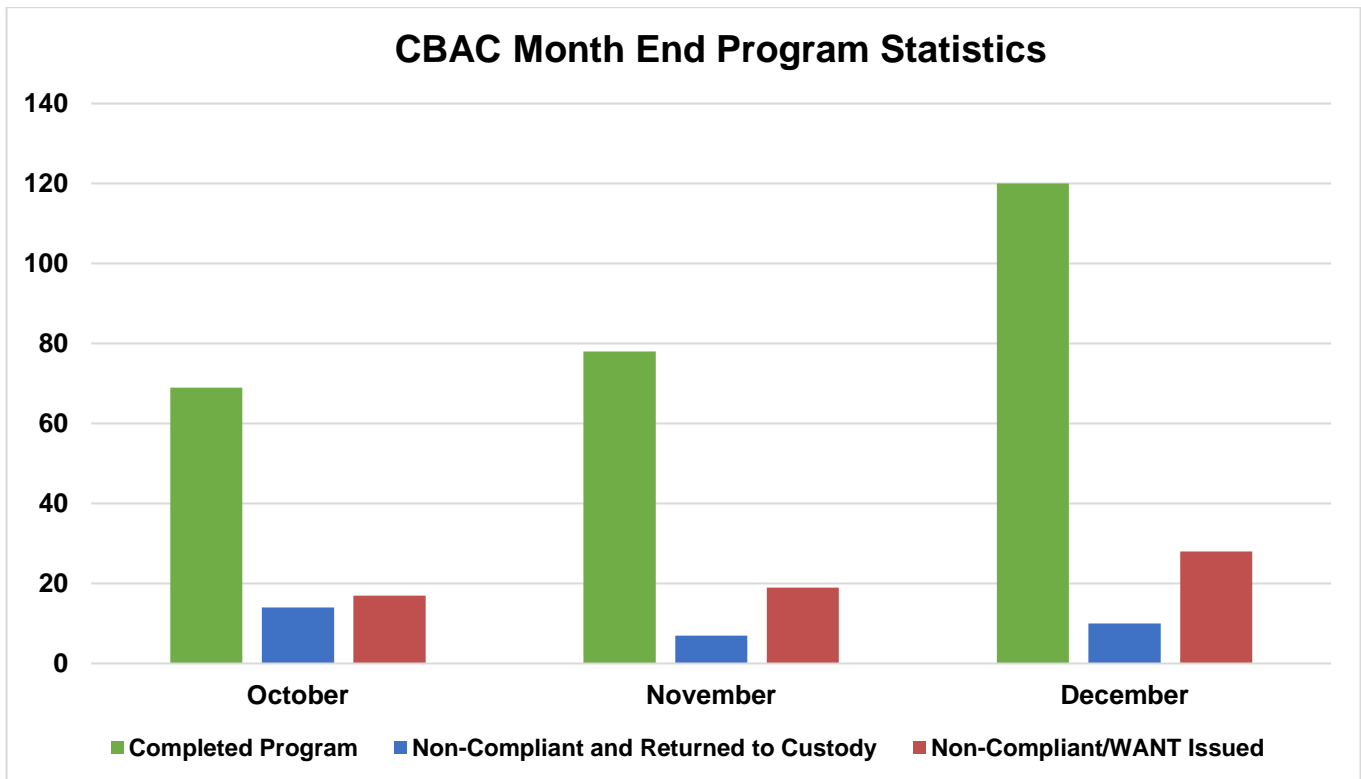
Program Quarterly Statistics	Enrolled	Completed	Returned to Custody	Absconded
START	13	13	3	2
Community Grant Beds	0	0	0	0
Veterans	1	0	1	0
Transitional Case Management	1	0	0	0
Tarzana TC DMH/SUD	0	0	0	0
Normandie Village DMH	0	1	0	0

COMMUNITY BASED ALTERNATIVES TO CUSTODY (CBAC)

The PMB's CBAC unit identifies low risk sentenced offenders within the jail population who qualify to finish their remaining sentence in and out-of-custody alternative environment. Although these individuals are outside of traditional custody, they are still under the jurisdiction of the Department.

CBAC Monthly Placement									
Program	October			November			December		
	M	F	Total	M	F	Total	M	F	Total
Electronic Monitoring Program	29	6	35	19	3	22	3	1	4
Weekender Work Program	25	0	25	24	0	24	14	0	14
Work Release Program	37	7	44	24	11	35	27	6	33
Monthly Totals	91	13	104	67	14	81	44	7	51

The graph below depicts the total number of offenders who successfully completed the remainder of their sentence on a CBAC program. It also shows the number of offenders who failed to complete the program, and with the efforts of the PMB Compliance Unit, were returned back to finish their sentence, and those who failed to complete the program and were not returned back to custody.



RE - ENTRY ASSISTANCE

COMMUNITY RE-ENTRY AND RESOURCE CENTER (CRRC)

The information below are recently released inmates and inquiries and/or contacts made by members of the general public who have been assisted with services at the CRRC for the fourth quarter of 2018.

Inquiry Demographic Population	October	November	December	Total	Average
General Release	321	203	237	761	254
General Public	165	107	96	368	123
Alternative to Custody Program	1	1	6	8	3
Coordinated Release	34	101	54	189	63
Work Release	2	3	0	5	2
Phone Referral	0	0	0	0	0
Monthly Totals:	523	415	393	1,331	444

Inquiry Demographic Gender	October	November	December	Total	Average
Male	430	347	333	1,110	370
Female	102	81	68	251	84
Monthly Totals:	532	428	401	1,361	454

CTU personnel visit the Inmate Reception Center release area to educate and remind inmates waiting to go home about services available at the CRRC. Walks of the release area are performed every 90 minutes.

	October	November	December	Total	Average
Number of 90 Minute Contact Walks	72	66	62	200	67
Number of Inmates Contacted	1,711	1,781	1,663	5,155	1,718
Number of Flyers Distributed	1,703	1,753	1,166	4,622	1,541

CTU COORDINATED RELEASES TO VARIOUS PROGRAMS

The final 90 days leading to an inmate's release from custody are the most critical in ensuring a successful transition from Custody to Community Based Organization (CBO) Treatment Centers. During the time leading up to their release, inmates are interviewed several times by the CBO Staff and members of the Community Transition Unit to ensure that they are matched up with a suitable treatment provider.

The coordinated release process helps to create a trust between law enforcement, inmate participants, and CBO's. The CTU's ultimate goal is to provide a successful recovery and re-entry into the community and to ultimately decrease recidivism.

	October	November	December	Total	Average
Coordinated Release	128	136	143	407	136

CTU VITAL RECORDS

Through the Vital Records Program, LASD staff members have been deputized by the County Registrar-Recorder to facilitate birth certificate applications for inmates born in Los Angeles County, who have requested a certified copy. The fee of \$32 for certified copies of birth certificates is funded by the Inmate Welfare Fund.

All inmates in custody are eligible to apply for a California ID Card. The issued ID's are provided to the inmates upon their release. The inmates must still report to the DMV to obtain a driver license following their release.

Records Processed	October	November	December	Quarterly Total	Average
DMV - California Identification Card	306	293	251	850	283
RECORDS – Birth Certificate	380	415	445	1,240	413
Totals	686	708	696	2,090	696

Records Issued	October	November	December	Quarterly Total	Average
DMV - California Identification Card	59	108	238	405	135
RECORDS – Birth Certificate	388	198	118	704	235
Totals	447	306	356	1,109	370