



CUSTODY DIVISION POPULATION QUARTERLY REPORT

January - March 2019

Los Angeles County Sheriff's Department

Alex Villanueva, Sheriff

TABLE OF CONTENTS

Executive Summary.....	3
1. Population Trends.....	4
LA County Inmate Population Graph	
Monthly ADIP Trend	
Arrests, Bookings and Releases	
Release Practices	
Homeless and Veteran	
2. Facilities Overview.....	10
Rated Capacities - Board of State and Community Corrections	
Jail Housing Facilities	
Men's Central Jail	
Twin Towers Correctional Facility	
Century Regional Detention Center	
Pitchess Detention Center – East	
Pitchess Detention Center – North	
Pitchess Detention Center – South	
North County Correctional Facility	
3. Population Overview.....	17
Inmate Population Demographics	
Inmate Population Offender Age Groups	
Jail Population by Security Level	
Inmate Population Breakdown	
Crime Classification Statistics	
Inmates with M7	
Pre-Trial Population	
Pre-Trial Misdemeanor Population	
Pre-Trial Bail Holds	
Mental Health Inmate Population	
Misdemeanor Incompetent to Stand Trial (MIST)	
Americans with Disabilities Act (ADA)	
Medical Housing	
4. In-Custody Programs.....	31
Credit Earnings	
Conservation Work Program (CWP)	
Education Based Incarceration Program (EBI-Milestone)	
Fire Camp Training Program	
CDCR Fire Camp Program	
Back on Track (BOT)	
In-Custody S.T.A.R.T Program	

5. Alternatives to Custody Programs.....	35
Community Transition Unit (CTU)	
Substance Abuse Treatment and Reentry Transition (S.T.A.R.T)	
Female Programs	
Veteran’s Administration (VA)	
Transitional Case Management Program (TCM)	
Tarzana Treatment Center DMH/SUD Program	
Mental Health Diversion – Normandie Village/Gateway	
Community Based Alternatives to Custody (CBAC)	
LA County ATC Inmate Population Graph	
6. Re-Entry Assistance.....	40
Community Re-Entry and Resource Center (CRRC)	
CTU Coordinated Releases to Various Programs	
CTU Vital Records	

EXECUTIVE SUMMARY

The Los Angeles County Sheriff's Department (LASD) is committed to maintaining a secure and constitutional jail system. As part of this effort, a periodic report is essential to better understand and quantify population trends. This **Custody Division Population Quarterly Report** reports data collected during the First Quarter of 2019, and is produced by the Population Management Bureau (PMB) Analysis Unit.

The average daily inmate population (ADIP) during the first quarter of 2019 was 16,789. This number includes approximately 258 inmates participating in community-based alternatives to custody programs. This is lower than the first quarter of 2018 ADIP average of 17,434, including approximately 314 who participated in the community-based alternative to custody programs.

Conditions of over-crowding remained this quarter and necessitated the continued use of percentage release to manage the inmate population. Inmates serving traditional county sentence completed 10 percent of their court ordered sentences. Inmates who were serving sentences for designated serious and/or violent offenses (M7 charges) and those sentenced under 1170 PC (AB109) continued to serve 100 percent of their sentences, minus any time credits earned. For further information regarding this quarter's percentage release criteria see page 8 of this report.

In late-March 2018, the Department extended the release provision under penal code section 4024.1, which grants the Sheriff the authority to accelerate the release, discharge, or expiration of sentence date of sentenced inmates up to a maximum of 30 days or 10 percent off their term of sentence. Prior to March 2018, the Department utilized this section by allowing inmates five (5) additional days off their sentence, due to the critical need for space, it was extended to the maximum 30 days.

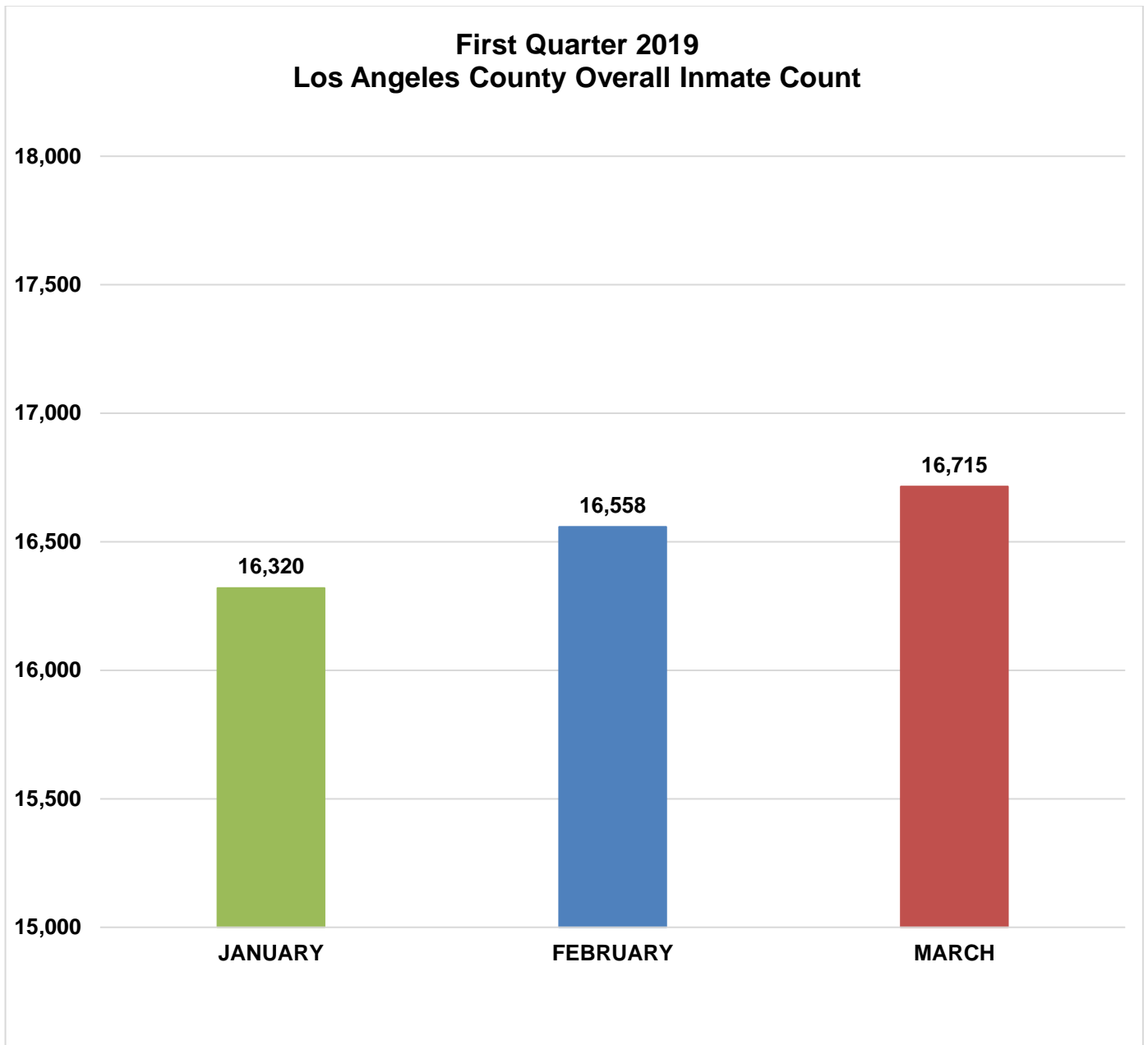
The Traditional County Sentenced (TCS) population this quarter was approximately 1,379, similar to last quarter (1,380), and the number of inmates sentenced under 1170 PC was approximately 2,547, slightly less than last quarter (2,637) totals.

The mental health population increased slightly to 5,286 (from 5,272 last quarter) and comprised 32 percent of the total inmate population. During the first quarter of 2018, the mental health population was 4,961 and comprised 29 percent of the total inmate population. The continuing increase in the mental health population has necessitated the conversion of several general population housing units into mental health housing.

Information encompassed in this report/document depicts data related to a specific date and time. Data may differ based on numerous factors related to an inmate's status, disposition, facility, etc. Information may differ based on systems queried, archived information, date/time parameters or numerous other factors. Information in disparate reports should not be combined as data sets may be inconsistent in queries and responses.

POPULATION TRENDS

LA COUNTY INMATE POPULATION

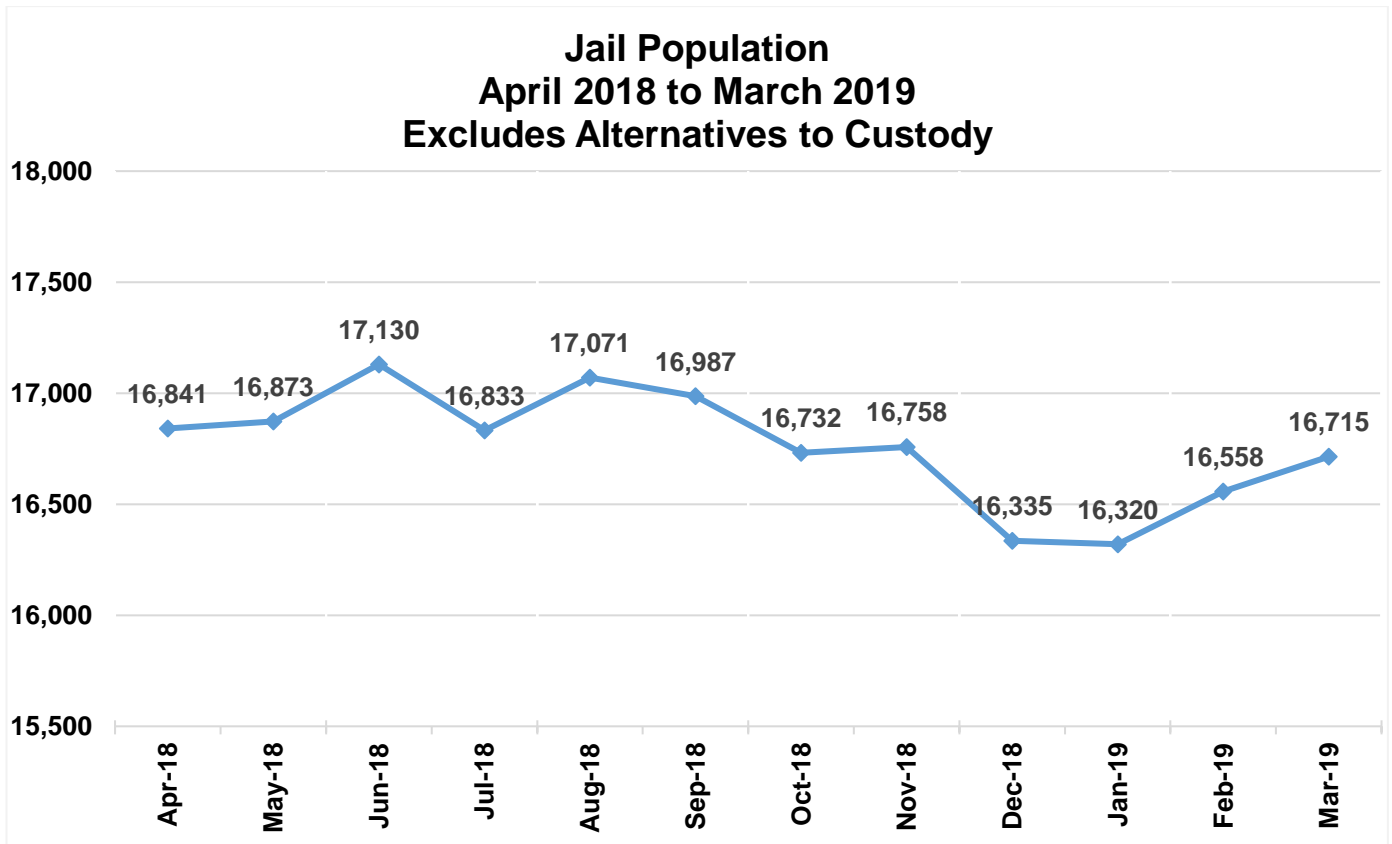


**2019 Quarterly Overall
Division ADIP**

16,531

Quarterly Division ADIP reflects all inmates processing into IRC, excludes ATC.

Monthly ADIP Trend



Nine Year ADIP Comparison		
Year	ADIP	Notes
2011	15,014	(Oct - AB109 enacted)
2012	18,043	
2013	18,687	
2014	18,680	(Nov - Prop 47)
2015	17,049	
2016	16,613	
2017	17,024	
2018	16,910	
2019	16,531	Data collected through March 2019

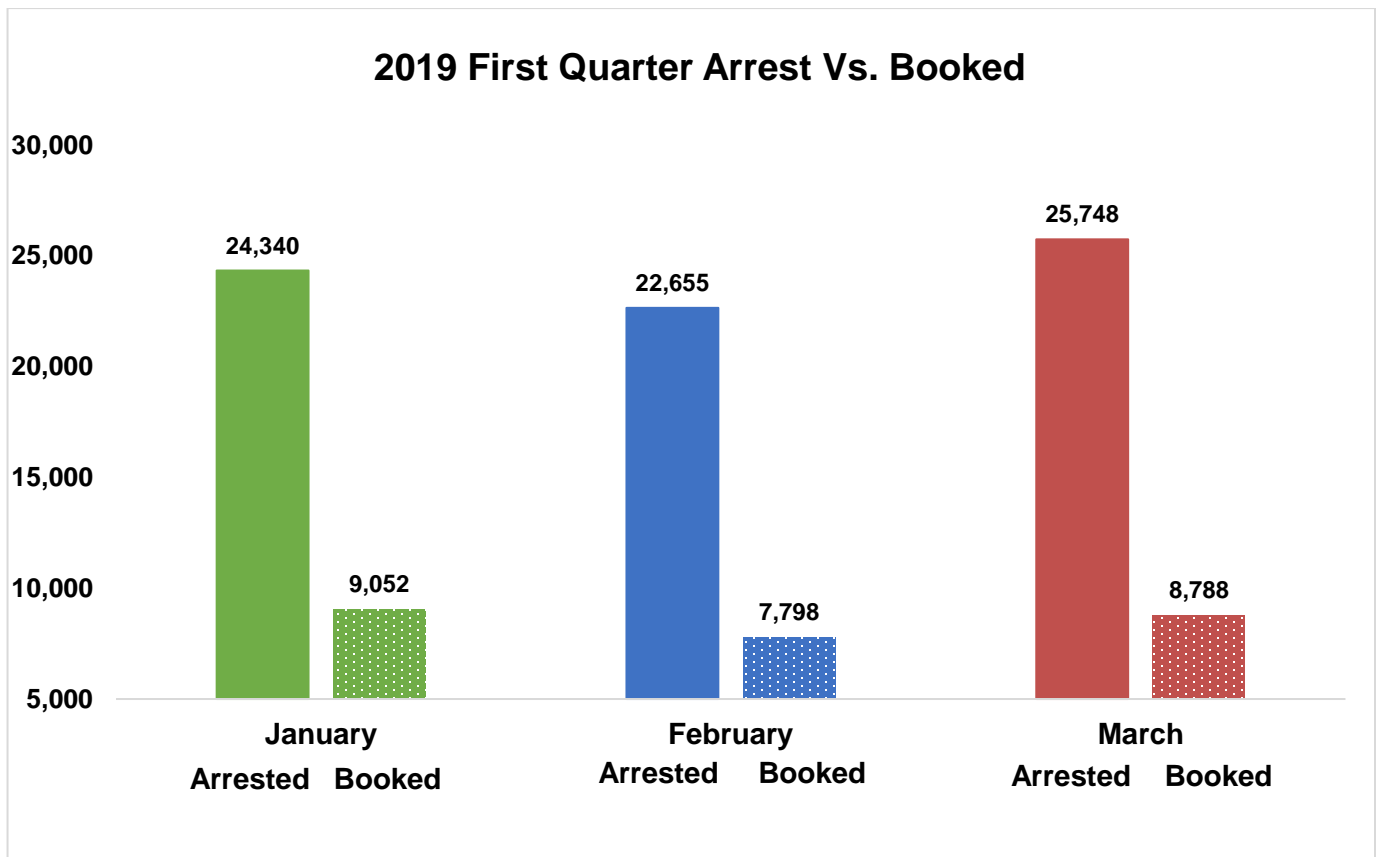
FIRST QUARTER 2019 - ARREST AND BOOKING STATS

Arrest activity increased by 7% over last quarter (67,808). The number of inmates booked into the LA County jail this quarter was increased by 3% over last quarter's number of inmates booked into custody (24,961).

	January		February		March		Quarterly Total	Quarterly Average	Quarterly %
	Monthly Total	%	Monthly Total	%	Monthly Total	%			
Felony	9,167	38%	8,154	36%	9,388	36%	26,709	8,903	37%
Misdemeanor	14,610	60%	13,963	62%	15,732	62%	44,305	14,768	61%
Other	563	2%	538	2%	628	2%	1,729	576	2%
Total Arrested	24,340		22,655		25,748		72,743	24,248	
Total Booked into LA County	9,052	37%	7,798	34%	8,788	34%	25,638	8,546	35%

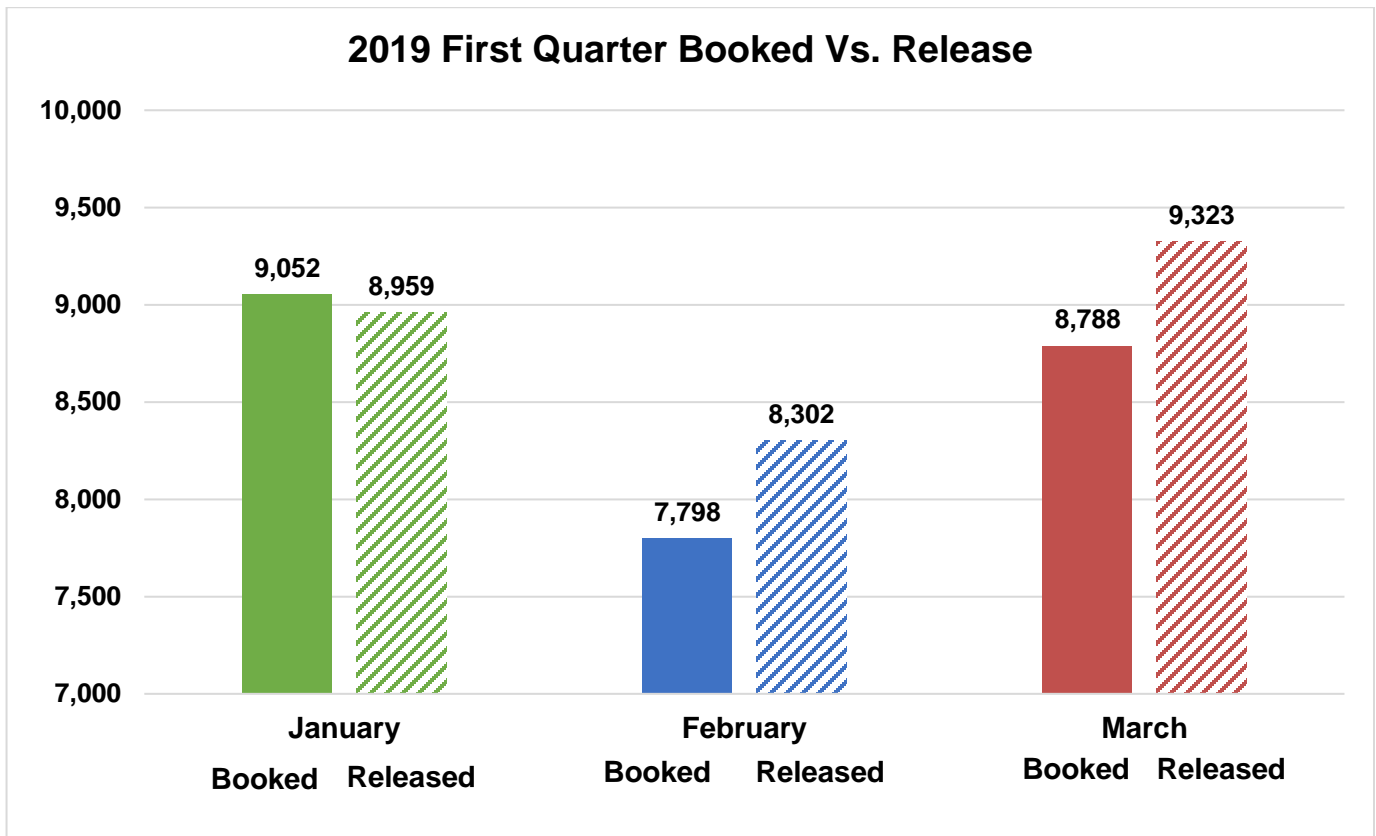
FIRST QUARTER 2019 - ARRESTS VS. BOOKINGS

The graph below compares the average Arrests and Bookings for this quarter.



FIRST QUARTER 2019 – BOOKINGS VS. RELEASES

LASD averaged approximately 8,861 releases this quarter. That is a decrease of approximately 3 percent of releases compared to last quarter (average of 9,097).



LA COUNTY JAIL RELEASE PRACTICES

Due to conditions of overcrowding, during this quarter traditional county sentenced inmates were subject to early release under the following conditions.

Month	Release Criteria Male	Release Criteria Female	*M7 Release Criteria	**Short Sentence Male	**Short Sentence Female
January	10%	10%	100%	180 days	180 days
February	10%	10%	100%	180 days	180 days
March	10%	10%	100%	180 days	180 days

*Inmates classified as M7 have sentences for designated serious and/or violent offenses or have notoriety in the community, which requires their record jacket to go through extra 'security' checks upon release from Sheriff's custody.

**Shorts are inmates sentenced to a term in county jail, which after all legal credits are awarded and the current jail percentage time is considered, are immediately released from Sheriff's custody after processing from court.

HOMELESS AND VETERAN

Homeless Population

The chart below provides an average breakdown of the inmate population who stated they were homeless by gender, major race and age category, which is 27% of the total population.*

	January	February	March	TOTAL	AVERAGE
Male	3,772	3,853	3,868	11,493	3,831
Female	575	588	604	1,767	589
Total	4,347	4,441	4,472	13,260	4,420

	January	February	March	TOTAL	AVERAGE
Hispanic	2,018	2,040	2,066	6,124	2,041
Black	1,369	1,426	1,426	4,221	1,407
White	822	830	837	2,489	830
Other	138	145	143	426	142
Total	4,347	4,441	4,472	13,260	4,420

	January	February	March	TOTAL	AVERAGE
18 to 25	820	842	852	2,514	838
26 to 34	1,429	1,449	1,448	4,326	1,442
35 to 39	619	637	634	1,890	630
40 to 44	451	450	467	1,368	456
45 & Older	1,028	1,063	1,071	3,162	1,054
Total	4,347	4,441	4,472	13,260	4,420

*Effective September 2018, homeless data is collected from ATAR.

**Information contained is based on a snapshot of the daily inmate population purge every Tuesday.

Veteran Population

The chart below provides an average breakdown of the inmate population who stated they have served in the United State Military by gender, major race and age category, which is 2% of the total population.*

	January	February	March	TOTAL	AVERAGE
Male	370	369	368	1,107	369
Female	7	5	8	20	7
Total	377	374	376	1,127	376

	January	February	March	TOTAL	AVERAGE
Hispanic	106	101	98	305	102
Black	146	146	146	438	146
White	109	107	108	324	108
Other	16	20	24	60	20
Total	377	374	376	1,127	376

	January	February	March	TOTAL	AVERAGE
18 to 25	18	15	17	50	17
26 to 34	70	73	73	216	72
35 to 39	56	53	53	162	54
40 to 44	42	40	40	122	41
45 & Older	191	193	193	577	192
Total	377	374	376	1,127	376

*These are numbers based upon self-identification and have not been confirmed by the Veterans Administration.

**Effective September 2018, veteran data is collected from ATAR.

***Information contained is based on a snapshot of the daily inmate population purge every Tuesday.

FACILITIES OVERVIEW

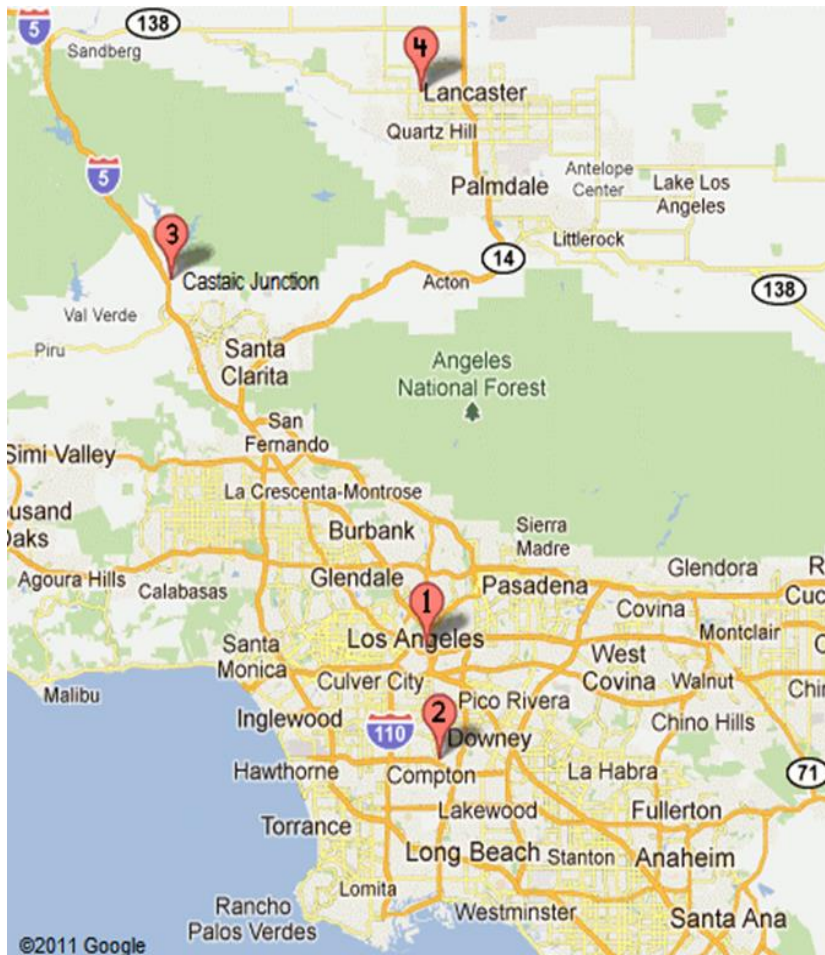
RATED CAPACITY

The Board of State and Community Corrections (BSCC) is a government body which recommends capacity limits for county jails. BSCC conducts biennial jail inspections; LASD was rated in April 2016.

Board of State and Community Corrections				
LASD Custody Facilities	BSCC Rated Capacity	Quarterly Facility ADIP	Above BSCC Rated Capacity	% Over BSCC Capacity
Men's Central Jail	3,529	4,307	778	22%
Twin Towers Correctional Facility	2,484	3,278	794	32%
Century Regional Detention Facility	1,708	2,074	366	21%
Pitchess Detention Center – East	926	64	-862	-93%
Pitchess Detention Center – North	832	1,451	619	74%
Pitchess Detention Center – South	844	1,372	528	63%
North County Correctional Facility	2,214	3,683	1,469	66%

Total BSCC Rated Capacity*	Quarterly Facility ADIP	Total Above BSCC Rated Capacity	Total % Over BSCC Capacity	Total % Over BSCC Capacity Excluding East Facility
12,537	16,229	3,692	29%	39%

*Statistical data gathered from *Board of State and Community Corrections Inspection Report 11/2016*.



LA County Jail Facilities

- 1**
- Men's Central Jail (MCJ)
- Twin Towers Correctional Facility (TCF)
- Los Angeles County Medical Center (LCMC)
- Correctional Treatment Center (CTC)
- Inmate Reception Center (IRC)

- 2**
- Century Regional Detention Facility (CRDF)

- 3**
- Pitchess Detention Center (PDC)
- PDC East Facility
- PDC North Facility
- PDC South Facility
- North County Correctional Facility (NCCF)

- 4**
- Mira Loma Detention Center (MLDC)

JAIL HOUSING FACILITIES

MEN'S CENTRAL JAIL TOTAL INMATE POPULATION 2019					
Security Level	January	February	March	Quarterly Average	% of Population
Security Level Low 1-4	820	839	843	834	19%
Security Level Medium 5-7	2,726	2,791	2,844	2,787	65%
Security Level High 8-9	674	704	703	694	16%
FACILITY TOTAL	4,220	4,334	4,390	4,315	100%
°SUB POPULATION HOUSED THROUGHOUT FACILITY					
Housing Type	January	February	March	Quarterly Average	
* Administratively Segregated Inmates (K-10)	40	50	59	50	
** Restrictive Housing (K-17, K-18, K-19, K-20)	263	270	270	268	
> Administratively Segregated Inmates (K-1)	18	18	14	17	
*** Discipline	26	34	35	32	
General Population on Psychotropic Meds	752	820	957	843	
Inmate Workers	914	940	940	931	
LGBT (K-6 G) Inmates	364	368	369	367	
Medical/Clinic	341	334	343	339	
^ Other (K-6T/B/C)	181	186	202	190	
Pro-Per	69	73	74	72	
School Housing (EBI)	336	348	348	344	
MOH (H.O.P.E. Program)	21	25	22	23	
Sexually Violent Predators	10	9	10	10	
Sex Crimes Against Children (K-6 Y) Inmates	228	243	262	244	
^^ Developmentally Disabled	14	14	15	14	

[°]Sub population housed throughout facility includes those who are classified with special housing needs and are included in the total inmate population. An inmate may belong to more than one subpopulation.

*K-10-Administratively segregated for various reasons including danger to self or others.

**K-17: Disruptive; K-18: Protective Custody; K-19: Major Disruptive; K-20: Highly Dangerous.

>K-1 Law Enforcement related in custody.

^ K-6T Contempt of court, K6B threatened by others, K-6C protective custody.

*** Majority of discipline inmates are now housed at TTCF.

^^ Development Disable are combined with Blind/Deaf and Mental inmates. They were moved to MCJ from TTCF in January 2018.

**** Statistical data are averages gathered from Facility Count Sheet every Tuesday.

**TWIN TOWERS CORRECTIONAL FACILITY
TOTAL INMATE POPULATION
2019**

Security Level	January	February	March	Quarterly Average	% of Population
Security Level Low 1-4	607	598	554	586	18%
Security Level Medium 5-7	2,178	2,223	2,226	2,209	66%
Security Level High 8-9	550	508	519	526	16%
Facility Total	3,335	3,329	3,299	3,321	100%

°SUB POPULATION HOUSED THROUGHOUT FACILITY

Housing Type	January	February	March	Quarterly Average
* Administratively Segregated Inmates (K-10)	52	47	49	49
** Restrictive Housing (K-17, K-18, K-19, K-20)	107	107	112	109
^ Administratively Segregated Inmates (K-1)	0	0	1	0
*** Administratively Segregated Inmates (K-6B)	25	20	23	23
American's With Disabilities (ADA)	335	355	382	357
Discipline	80	71	95	82
Female Medical (CTC)	17	16	16	16
General Population on Psychotropic Meds Security Level 1-4	33	38	36	36
General Population on Psychotropic Meds Security Level 5-7	169	179	179	176
General Population on Psychotropic Meds Security Level 8-9	48	49	57	51
LGBT (K-6 G) Inmates	90	96	92	93
Medical (CTC)	109	110	113	111
Mentally III – High Observation Housing (HOH)	1,020	1,046	1,012	1,026
Mentally III – Moderate Observation / Service Area (MOH)	2,486	2,447	2,389	2,441
Mentally III – Moderate Observation Housing (MOH) School Housing (EBI)	368	365	359	364
Mentally III – Moderate Observation Housing (MOH) Sex Crimes Against Children (K-6 Y) Inmates	140	144	142	142

° Sub population housed throughout facility includes those who are classified with special housing needs and are included in the total inmate population. An inmate may belong to more than one subpopulation.

***K-10-Administratively segregated for various reasons including danger to self or others.**

****K-17: Disruptive; K-18: Protective Custody; K-19: Major Disruptive; K-20: Highly Dangerous.**

*****K-6B-Administratively segregated are at risk of assault in GP housing.**

^ Related to Law Enforcement-segregated from general population for safety reasons.

****** Statistical data are averages gathered from Facility Count Sheet every Tuesday.**

**CENTURY REGIONAL DETENTION CENTER
TOTAL INMATE POPULATION
2019**

Security Level	January	February	March	Quarterly Average	% of Population
Security Level Low 1-4	568	607	627	601	30%
Security Level Medium 5-7	1,153	1,141	1,128	1,141	56%
Security Level High 8-9	275	264	288	276	14%
Facility Total	1,996	2,012	2,043	2,017	100%

°SUB POPULATION HOUSED THROUGHOUT FACILITY

Housing Type	January	February	March	Quarterly Average
Administratively Segregated Inmates (K-10)	16	23	27	22
** Restrictive Housing (K-17, K-18, K-19, K-20)	24	24	19	22
Pregnant Females (K-8)	48	54	48	50
Discipline	30	32	34	32
Inmate Workers	318	294	310	307
Medical/Clinic	5	7	5	6
Mentally III – High Observation Housing (HOH)	279	305	313	299
Mentally III – Moderate Observation / Service Area (MOH)	357	355	350	354
Other (K-6 B)	3	3	2	3
School Housing (EBI)	460	476	483	473
Sex Crimes Against Children (K-6 Y) Inmates	7	5	5	6

°Sub population housed throughout facility includes those who are classified with special housing needs and are included in the total inmate population.

An inmate may belong to more than one subpopulation.

^K-10-Administratively segregated for various reasons including danger to self or others.

***K-17: Disruptive; K-18: Protective Custody; K-19: Major Disruptive; K-20: Highly Dangerous.*

*** Statistical data are averages gathered from Facility Count Sheet every Tuesday.*

**PITCHESS DETENTION CENTER – EAST FACILITY
TOTAL INMATE POPULATION
2019**

Security Level	January	February	March	Quarterly Average	% of Population
Security Level Low 1-4	50	57	38	48	76%
Security Level Medium 5-7	13	17	16	15	24%
Security Level High 8-9	0	0	0	0	0%
Facility Total	63	74	54	64	100%

°SUB POPULATION HOUSED THROUGHOUT FACILITY

HOUSING TYPE	January	February	March	Quarterly Average
Fire Camp Security Levels 1-4	50	57	38	48
Fire Camp Security Levels 5-7	13	17	16	15

°Sub population housed throughout facility includes those who are classified with special housing needs and are included in the total inmate population. An inmate may belong to more than one subpopulation.

** Statistical data are averages gathered from Facility Count Sheet every Tuesday.*

**PITCHESS DETENTION CENTER – NORTH
TOTAL INMATE POPULATION
2019**

Security Level	January	February	March	Quarterly Average	% of Population
Security Level Low 1-4	221	229	234	228	16%
Security Level Medium 5-7	1,186	1,174	1,178	1,179	82%
Security Level High 8-9	35	37	34	35	2%
Facility Total	1,442	1,440	1,446	1,443	100%

°SUB POPULATION HOUSED THROUGHOUT FACILITY

HOUSING TYPE	January	February	March	Quarterly Average
Discipline	23	18	22	21
Inmate Workers	93	95	94	94
School Housing GP (EBI) Security Levels 1-7	280	281	281	281
School Housing (EBI) Security Levels 1-7 K6Y	93	95	94	94
Sex Crimes Against Children Inmates (K-6 Y) Security Level 1-7	282	283	282	282
Mentally Ill - Moderate Observation Housing (MOH)	302	242	300	281

°Sub population housed throughout facility includes those who are classified with special housing needs and are included in the total inmate population.

An inmate may belong to more than one subpopulation.

♦Inmates housed at North Facility for disciplinary reasons.

** Statistical data are averages gathered from Facility Count Sheet every Tuesday.*

**PITCHESS DETENTION CENTER - SOUTH
TOTAL INMATE POPULATION
2019**

Security Level	January	February	March	Quarterly Average	% of Population
Security Level Low 1-4	470	452	452	458	34%
Security Level Medium 5-7	879	904	928	904	66%
Security Level High 8-9	0	0	0	0	0%
FACILITY TOTAL	1,349	1,356	1,380	1,362	100%

°SUB POPULATION HOUSED THROUGHOUT FACILITY

Housing Type	January	February	March	Quarterly Average
Back on Track Security Level 1-7	72	56	63	64
School Housing (EBI) Security Level 1-7	414	328	415	386
Inmate Workers Security Level 1-7	433	459	487	460

°Sub population housed throughout facility includes those who are classified with special housing needs and are included in the total inmate population. An inmate may belong to more than one subpopulation.

** Statistical data are averages gathered from Facility Count Sheet every Tuesday.*

**NORTH COUNTY CORRECTIONAL FACILITY
TOTAL INMATE POPULATION
2019**

Security Level	January	February	March	Quarterly Average	% of Population
Security Level Low 1-4	551	538	484	524	14%
Security Level Medium 5-7	2,200	2,259	2,291	2,250	62%
Security Level High 8-9	835	876	877	863	24%
Facility Total	3,586	3,673	3,652	3,637	100%

°SUB POPULATION HOUSED THROUGHOUT FACILITY

Housing Type	January	February	March	Quarterly Average
Administratively Segregated Inmates (K-10) Security Level 1-8	0	1	5	2
Administratively Segregated Inmates (K6-B) Security Level 1-8	121	127	125	124
Discipline Security Level 1-7	174	156	157	162
Inmate Workers Security Level 1-7	758	757	757	757
Medical/Clinic Security Level 1-7	11	12	10	11
School Housing (EBI) Security Level 1-8	188	143	190	174
Veterans	45	48	47	47

°Sub population housed throughout facility includes those who are classified with special housing needs and are included in the total inmate population.

An inmate may belong to more than one subpopulation.

**K-10-Administratively segregated for various reasons including danger to self or others.*

***Statistical data are averages gathered from Facility Count Sheet every Tuesday.*

POPULATION OVERVIEW

INMATE POPULATION DEMOGRAPHICS

Racial demographics this quarter indicate the three most populous racial groups within the LA County Jail for both male and female offenders are Hispanic (52%), Black (30%), and White (15%).

COMBINED	January 2019		February 2019		March 2019		Quarterly Average	Quarterly %
	Race	Population	%	Population	%	Population		
Hispanic	8,346	52%	8,454	52%	8,566	52%	8,455	52%
Black	4,860	30%	4,897	30%	4,977	30%	4,911	30%
White	2,426	15%	2,490	15%	2,506	15%	2,474	15%
All Others	543	3%	553	3%	574	3%	557	3%
Chinese	44	0%	49	0%	51	0%	48	0%
Filipino	26	0%	30	0%	30	0%	29	0%
Pacific Islanders	18	0%	21	0%	25	0%	21	0%
Japanese	6	0%	4	0%	4	0%	5	0%
American Indian	16	0%	15	0%	15	0%	15	0%
Total	16,285	100%	16,513	100%	16,748	100%	16,515	100%

MALE	January 2019		February 2019		March 2019		Quarterly Average	Quarterly %
	Race	Population	%	Population	%	Population		
Hispanic	7,433	53%	7,529	54%	7,613	53%	7,525	53%
Black	4,212	30%	4,255	29%	4,323	30%	4,263	30%
White	1,999	14%	2,060	14%	2,056	14%	2,038	14%
All Others	474	3%	478	3%	499	3%	484	3%
Chinese	40	0%	45	0%	48	0%	44	0%
Filipino	24	0%	29	0%	27	0%	27	0%
Pacific Islanders	14	0%	18	0%	22	0%	18	0%
Japanese	6	0%	4	0%	4	0%	5	0%
American Indian	15	0%	14	0%	13	0%	14	0%
Total	14,217	100%	14,432	100%	14,605	100%	14,418	100%

FEMALE	January 2019		February 2019		March 2019		Quarterly Average	Quarterly %
	Race	Population	%	Population	%	Population		
Hispanic	913	45%	925	44%	953	45%	930	45%
Black	648	31%	642	31%	654	31%	648	31%
White	427	21%	430	21%	450	21%	436	21%
All Others	69	3%	75	4%	75	3%	73	3%
Chinese	4	0%	4	0%	3	0%	4	0%
Filipino	2	0%	1	0%	3	0%	2	0%
Pacific Islanders	4	0%	3	0%	3	0%	3	0%
Japanese	-	0%	-	0%	-	0%	0	0%
American Indian	1	0%	1	0%	2	0%	1	0%
Total	2,068	100%	2,081	100%	2,143	100%	2,097	100%

* Statistical data are averages gathered from *Custody Division Daily Briefing Report* every Tuesday.

INMATE POPULATION OFFENDER AGE GROUPS

The 26-34 year old cohort was the most frequently represented age group within the jail population this quarter, followed by the 18-25 year old cohort.

COMBINED	January 2019		February 2019		March 2019		Quarterly Average	Quarterly %
	Age Group	Population	%	Population	%	Population		
18 to 25	3,772	22%	3,754	23%	3,825	22%	3,783	22%
26 to 34	5,459	34%	5,531	33%	5,617	34%	5,536	34%
35 to 39	2,213	14%	2,312	14%	2,319	14%	2,281	14%
40 to 44	1,565	10%	1,588	10%	1,620	10%	1,591	10%
45 & Older	3,276	20%	3,328	20%	3,368	20%	3,324	20%
Total	16,285	100%	16,513	100%	16,748	100%	16,515	100%

MALE	January 2019		February 2019		March 2019		Quarterly Average	Quarterly %
	Age Group	Population	%	Population	%	Population		
18 to 25	3,308	23%	3,306	23%	3,356	23%	3,323	23%
26 to 34	4,711	33%	4,768	33%	4,815	33%	4,765	33%
35 to 39	1,927	14%	2,017	14%	2,029	14%	1,991	14%
40 to 44	1,365	10%	1,391	10%	1,430	10%	1,395	10%
45 & Older	2,906	20%	2,950	20%	2,976	20%	2,944	20%
Total	14,217	100%	14,432	100%	14,605	100%	14,418	100%

FEMALE	January 2019		February 2019		March 2019		Quarterly Average	Quarterly %
	Age Group	Population	%	Population	%	Population		
18 to 25	464	22%	448	22%	469	22%	460	22%
26 to 34	748	36%	763	37%	802	37%	771	37%
35 to 39	286	14%	295	14%	290	14%	290	14%
40 to 44	200	10%	197	9%	190	9%	196	9%
45 & Older	370	18%	378	18%	392	18%	380	18%
Total	2,068	100%	2,081	100%	2,143	100%	2,097	100%

* Statistical data are averages gathered from *Custody Division Daily Briefing Report* every Tuesday.

JAIL POPULATION BY SECURITY LEVEL

LASD utilizes the Northpointe Classification system to assign security levels to inmates. The security levels guide where an inmate will be housed based on their individual risk for in-custody misconduct. Lower security housing areas offer more programming and privileges to better prepare the inmates for release. Higher security housing is more restricted and therefore limited in what programs are offered, due to potential risk of serious misconduct and/or escape by the high security level inmate population.

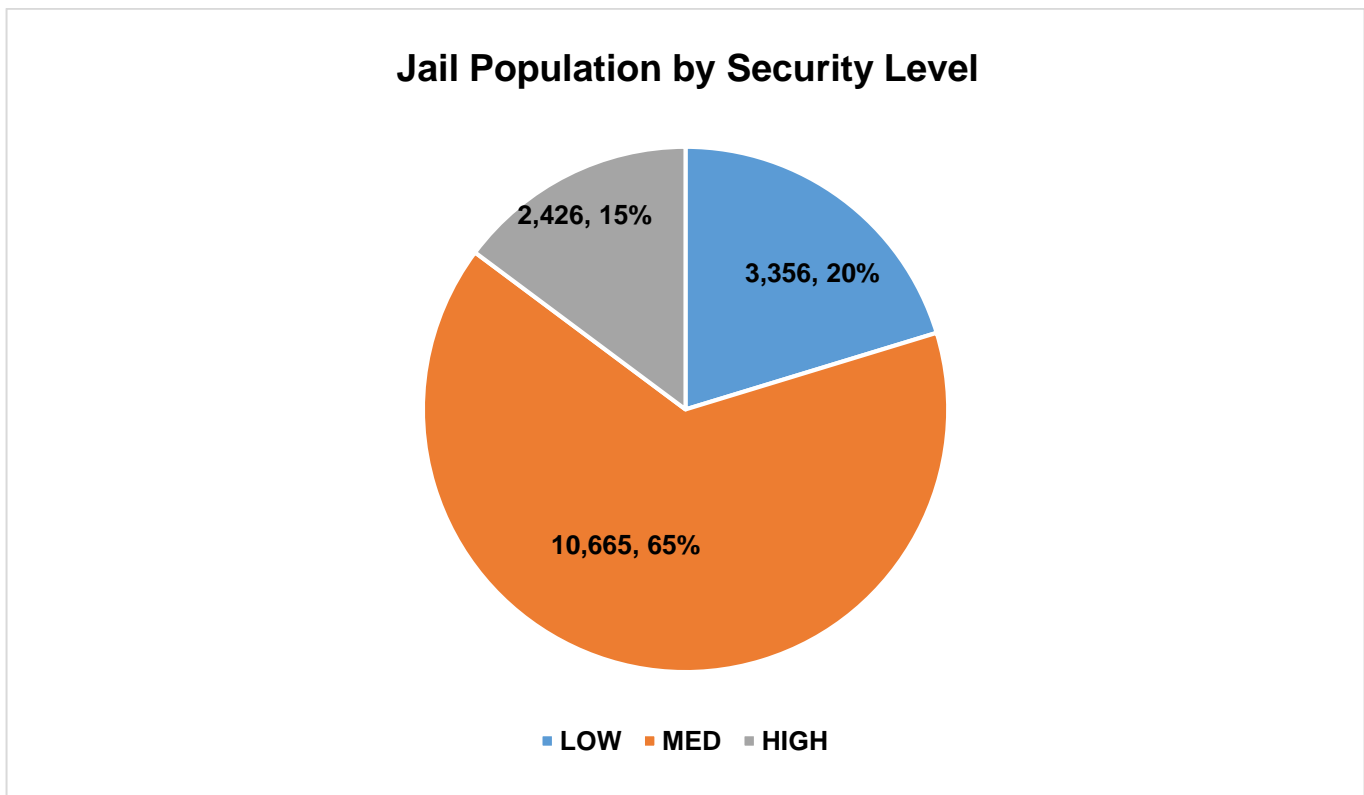
*Jail Population by Security Level				
Month	Low	Medium	High	Total
January	3,350	10,471	2,396	16,217
February	3,380	10,668	2,416	16,464
March	3,337	10,855	2,465	16,657
Average	3,356	10,665	2,425	16,446
Percent	20%	65%	15%	100%

*K-10 (Ad-Seg) inmates are re-evaluated for reclassification of security level during the re-class process which occurs every 45 days.

**This chart only includes inmates housed in LASD Type II facilities, does not include inmates housed in alternative custody beds.

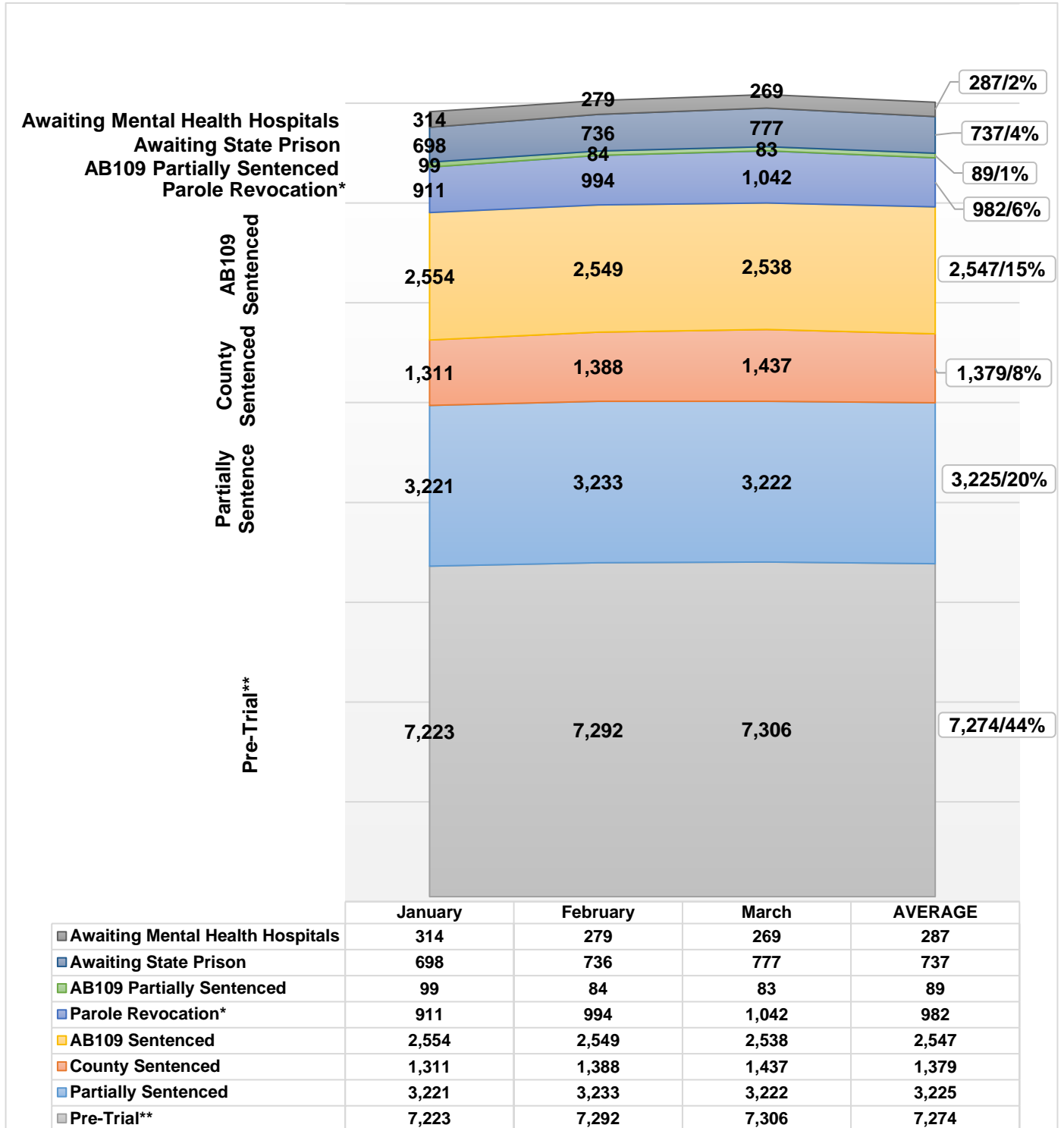
*** Information contained is based on a snapshot of the daily inmate population purge every Tuesday.

The pie graph below depicts the average number of inmates housed this quarter by security level. The percentage is calculated to the Facility ADIP for this quarter (16,446).



Inmate Population Breakdown

The inmate population consists of various categories of inmates in broad groupings, including: pre-trial, traditional county sentenced, AB 109 sentenced, AB109 sentenced with additional charges, parole/revocation violators, and those awaiting transfer to State Prison.



*Parole Revocation includes PRCS Revocation 3455, Flash Incarceration 3454 and Inmates with a 3056 hold.

**It should be noted that an inmate who is sentence status 1 (often referred to as "pretrial") could be in trial, or even completed trial, but is just not fully sentenced. Most inmates in sentence status 1 will be pretrial.

INMATE POPULATION BREAKDOWN CONTINUED

- **AWAITING STATE PRISON**

- During this quarter, an average of 737 inmates were awaiting transfer to state prison, some while pending trial on other cases.

- **AB109 PAROLE AND PROBATION VIOLATORS**

- An average of 982 AB109 inmates were in custody for violating their parole or probation.

- **AB109 SENTENCED**

- An average of 2,547 inmates were in custody, sentenced under AB109.

- **TRADITIONAL COUNTY SENTENCED INMATE POPULATION**

- The average daily count for the traditional county sentenced (TCS) population was 1,379 approximately 8% of the inmate population.

- **PRE-TRIAL INMATE POPULATION**

- During this quarter, there were approximately 25,638 new bookings into the LA County Jail. Forty-four percent (44%) of the average daily inmate population (16,531) was comprised of inmates who were pre-trial. Pre-trial inmates are those who have an open case and have not been sentenced by the courts.*

**It should be noted that an inmate who is sentence status 1 (often referred to as "pretrial") could be in trial, or even completed trial, but is just not fully sentenced. Most inmates in sentence status 1 will be pretrial.*

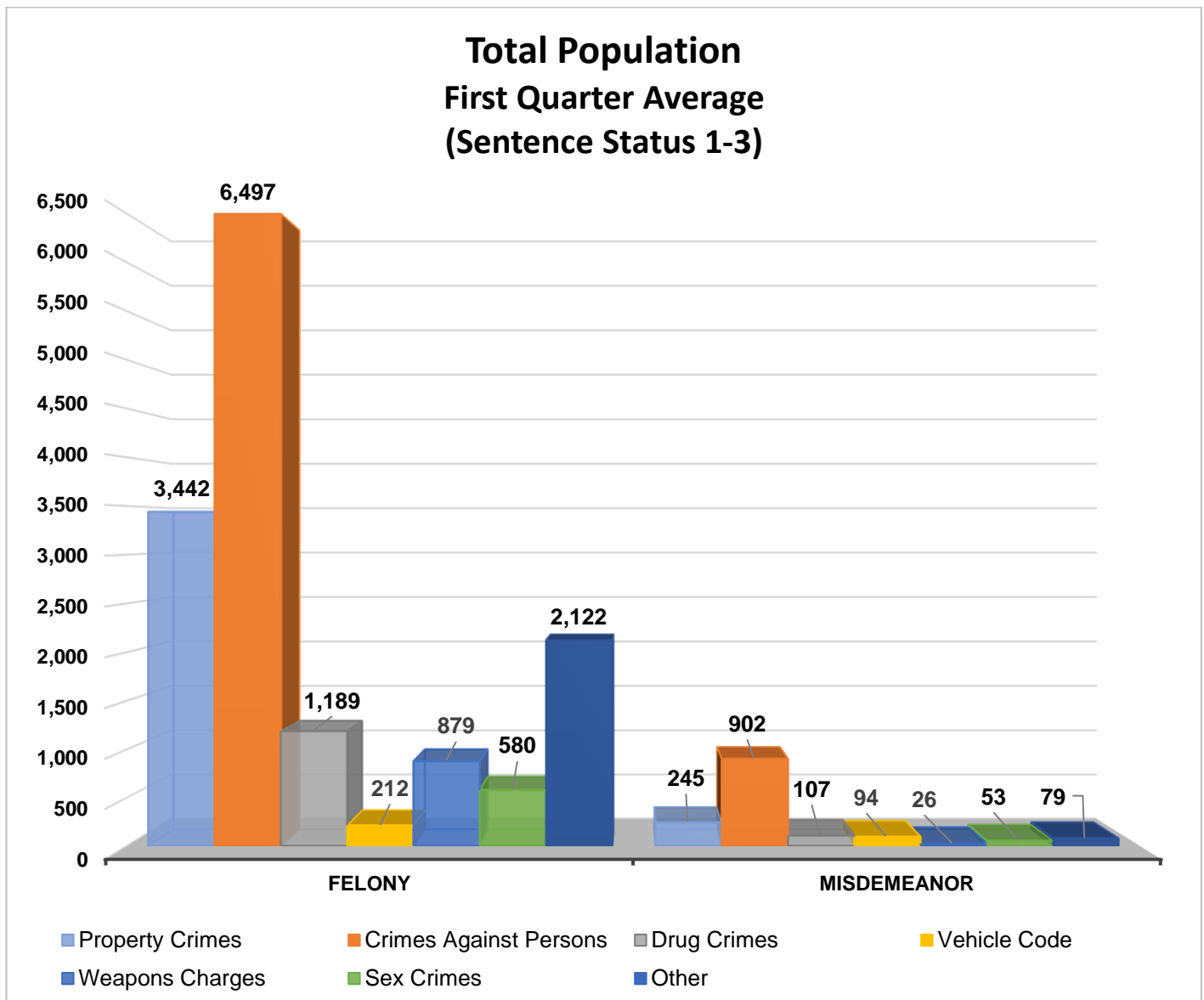
CRIME CLASSIFICATION STATISTICS

The chart below provides an average breakdown for the entire inmate population, both sentenced and un-sentenced, by arrest category.

Population (Sentence Status 1-3)

Arrest Category	Property Crime	Crimes Against Persons	Drug Crimes	Vehicle Code	Weapons Charges	Sex Crimes	Other	Total	Percentage of the Population
Felony	3,442	6,497	1,189	212	879	580	2,122	14,921	91%
Misdemeanor	245	902	107	94	26	53	79	1,506	9%
Total	3,687	7,399	1,296	306	905	633	2,201	16,427	100%

** Information contained is based on a snapshot of the daily inmate population purge every Tuesday.*



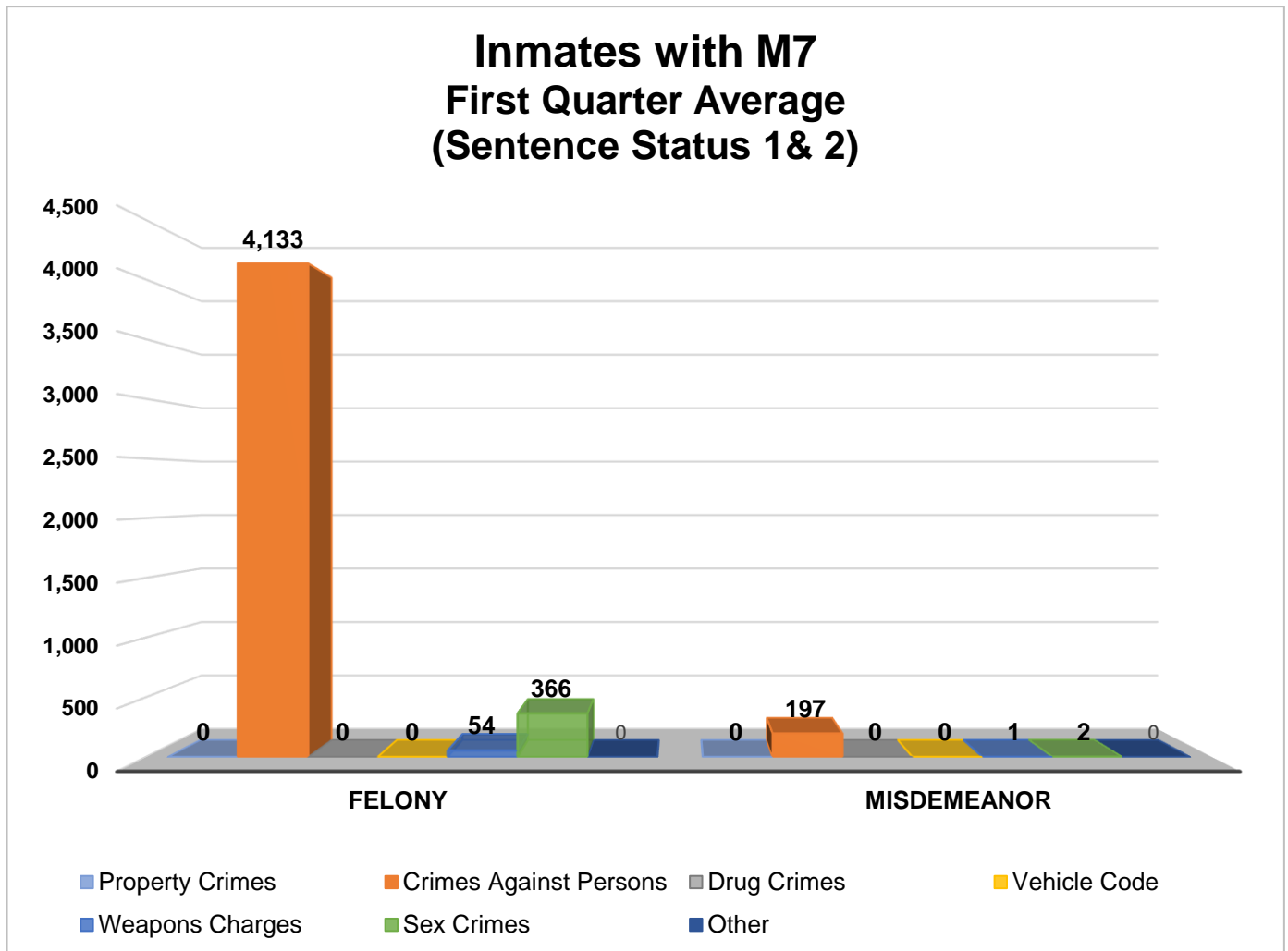
INMATES WITH ASSAULTIVE/VIOLENT CHARGES (M7)

The chart below provides a breakdown for the inmate population with M7 charges, sentence status one and two, by arrest category.

Inmates with Assaultive/Violent Charges (M7) (Sentence Status 1 & 2)

Arrest Category	Property Crime	Crimes Against Persons	Drug Crimes	Vehicle Code	Weapons Charges	Sex Crimes	Other	Total	Percentage of the pre-trial and partially sentenced Population
Felony	0	4,133	0	0	54	366	0	4,553	96%
Misdemeanor	0	197	0	0	1	2	0	200	4%
Total	0	4,330	0	0	55	368	0	4,753	100%

* Information contained is based on a snapshot of the daily inmate population purge every Tuesday.

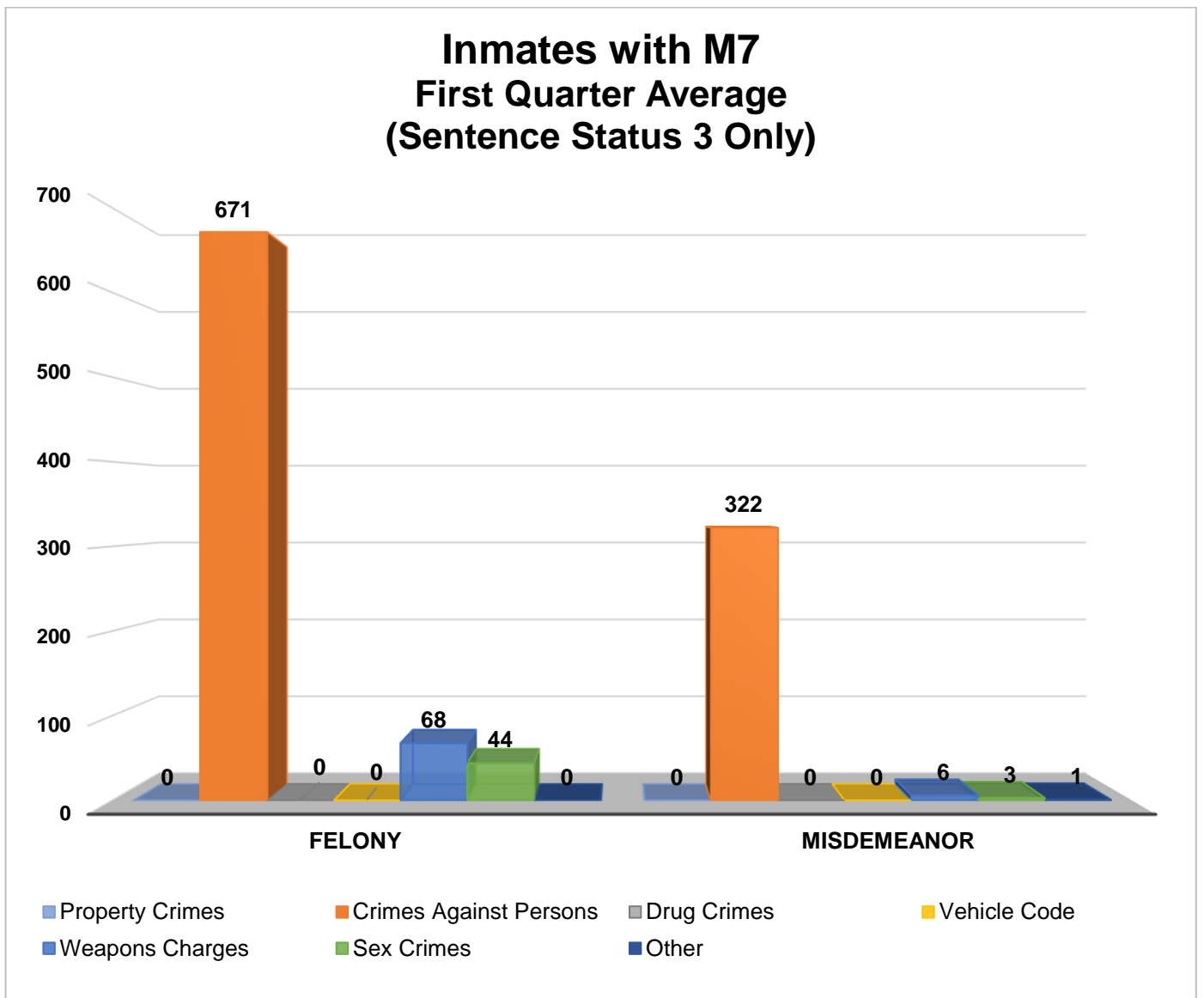


INMATES WITH ASSAULTIVE/VIOLENT CHARGES (M7) CONTINUED

Inmates with Assaultive/Violent Charges (M7) (Sentence Status 3 Only)

Arrest Category	Property Crime	Crimes Against Persons	Drug Crimes	Vehicle Code	Weapons Charges	Sex Crimes	Other	Total	Percentage of the Sentenced Population
Felony	0	671	0	0	68	44	0	783	70%
Misdemeanor	0	322	0	0	6	3	1	332	30%
Total	0	993	0	0	74	47	1	1,115	100%

* Information contained is based on a snapshot of the daily inmate population purge every Tuesday.



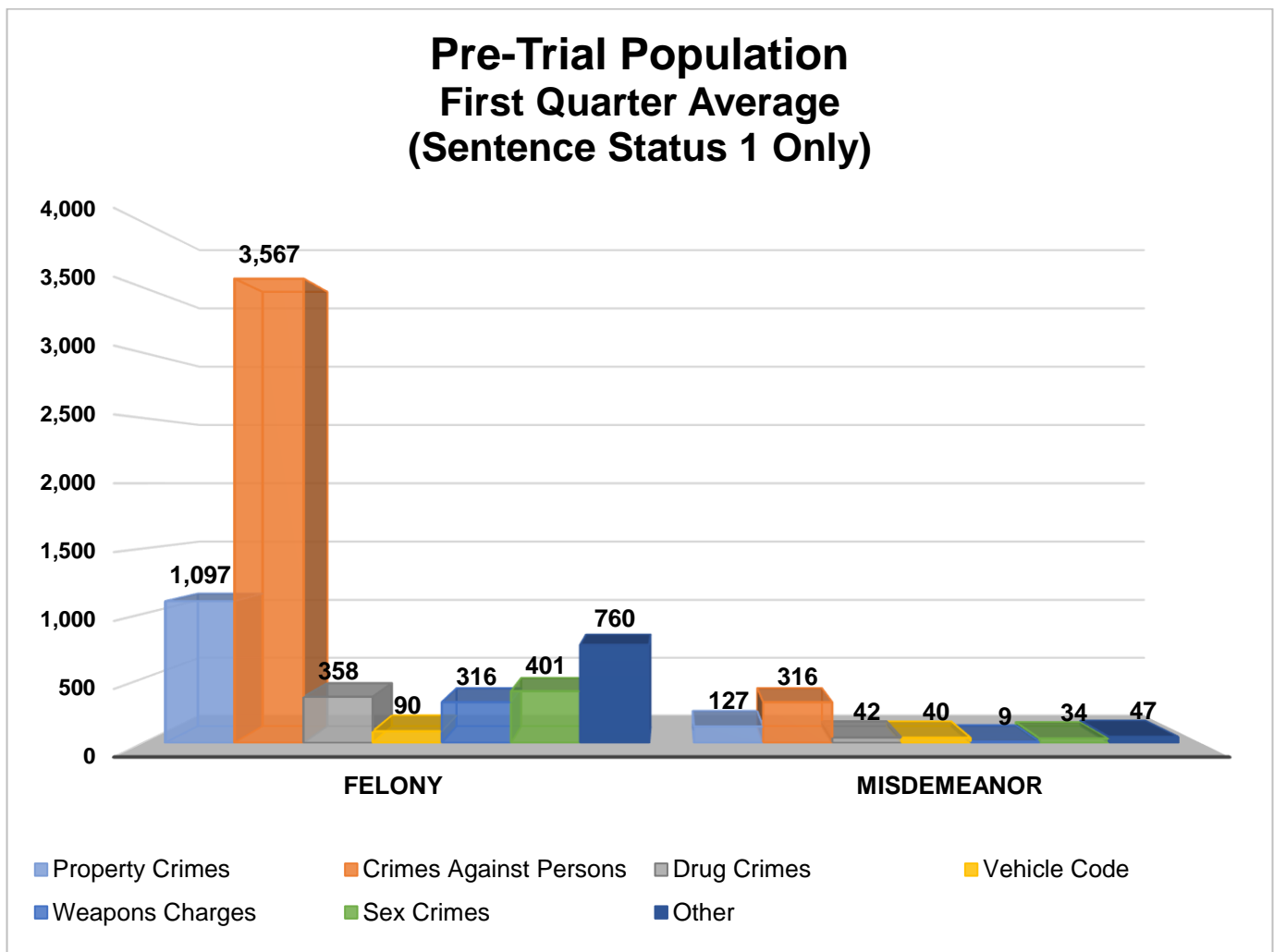
PRE – TRIAL POPULATION

The chart below provides a breakdown for the pre-trial inmate population who are awaiting court disposition.

Pre-trial Population (Sentence Status 1 only)

Arrest Category	Property Crime	Crimes Against Persons	Drug Crimes	Vehicle Code	Weapons Charges	Sex Crimes	Other	Total	Percentage of the pre-trial Population
Felony	1,097	3,567	358	90	316	401	760	6,589	91%
Misdemeanor	127	316	42	40	9	34	47	615	9%
Total	1,224	3,883	400	130	325	435	807	7,204	100%

* Information contained is based on a snapshot of the daily inmate population purge every Tuesday.



*It should be noted that an inmate who is sentence status 1 (often referred to as "pretrial") could be in trial, or even completed trial, but is just not fully sentenced. Most inmates in sentence status 1 will be pretrial.

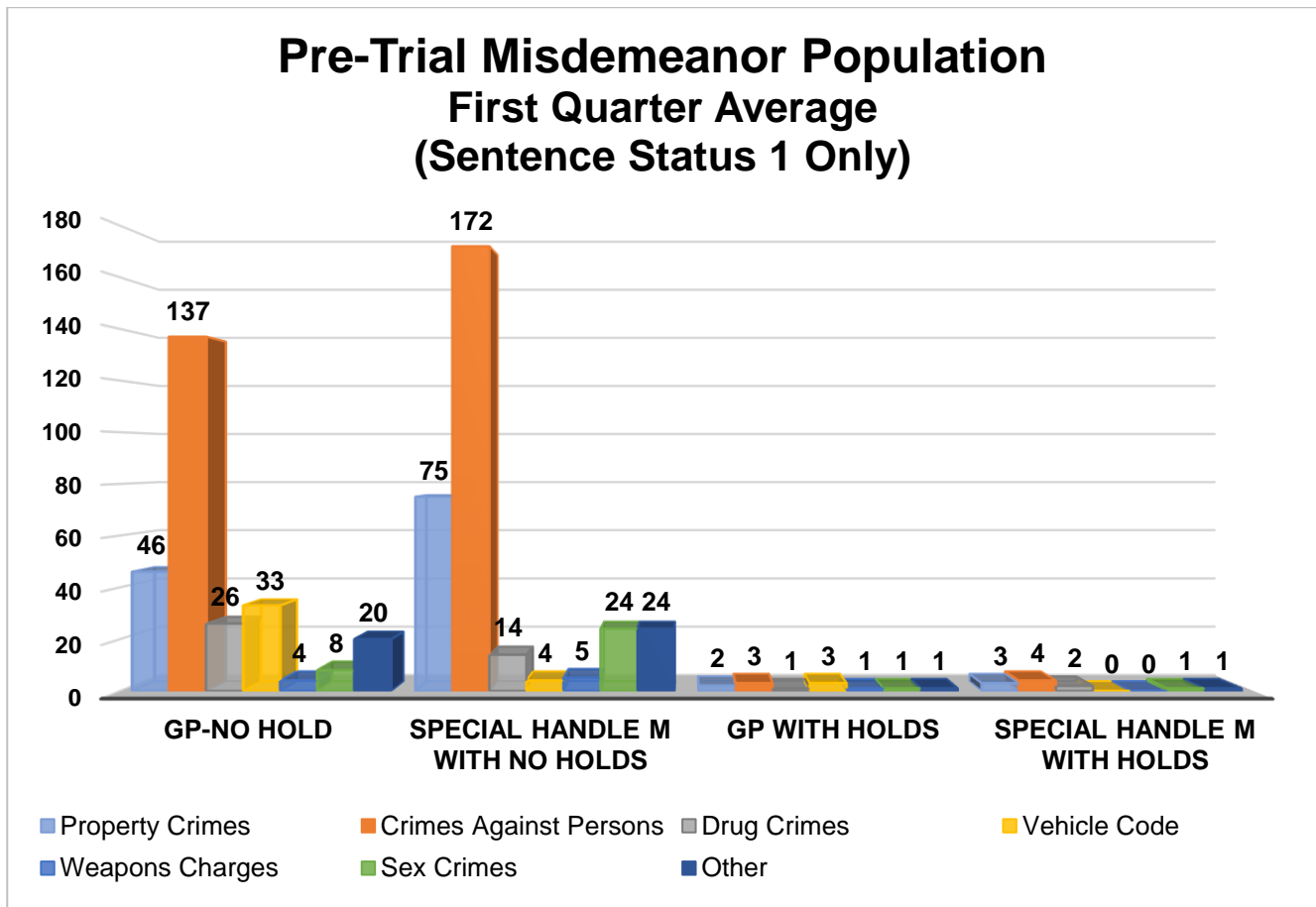
PRE – TRIAL MISDEMEANOR POPULATION

The chart below provides a breakdown for the pre-trial inmate population, incarcerated for a misdemeanor, who have not yet been convicted. “Holds” indicates the inmates are being held on a matter pending from an outside agency.

Pre-trial Misdemeanor Population (Sentence Status 1 only)

Arrest Category	Property Crime	Crimes Against Persons	Drug Crimes	Vehicle Code	Weapons Charges	Sex Crimes	Other	Total	Percentage of the pre-trial Population
GP No Hold	46	137	26	33	4	8	20	274	44%
Special Handle M with No Holds	75	172	14	4	5	24	24	318	52%
GP with Holds	2	3	1	3	1	1	1	12	2%
Special Handle M with Holds	3	4	2	0	0	1	1	11	2%
Total	126	316	43	40	10	34	46	615	100%

* Information contained is based on a snapshot of the daily inmate population purge every Tuesday.



*It should be noted that an inmate who is sentence status 1 (often referred to as “pretrial”) could be in trial, or even completed trial, but is just not fully sentenced. Most inmates in sentence status 1 will be pretrial.

PRE-TRIAL BAIL HOLDS

The numbers below represent the average number of inmates in LASD custody eligible for bail with the noted bail amounts.

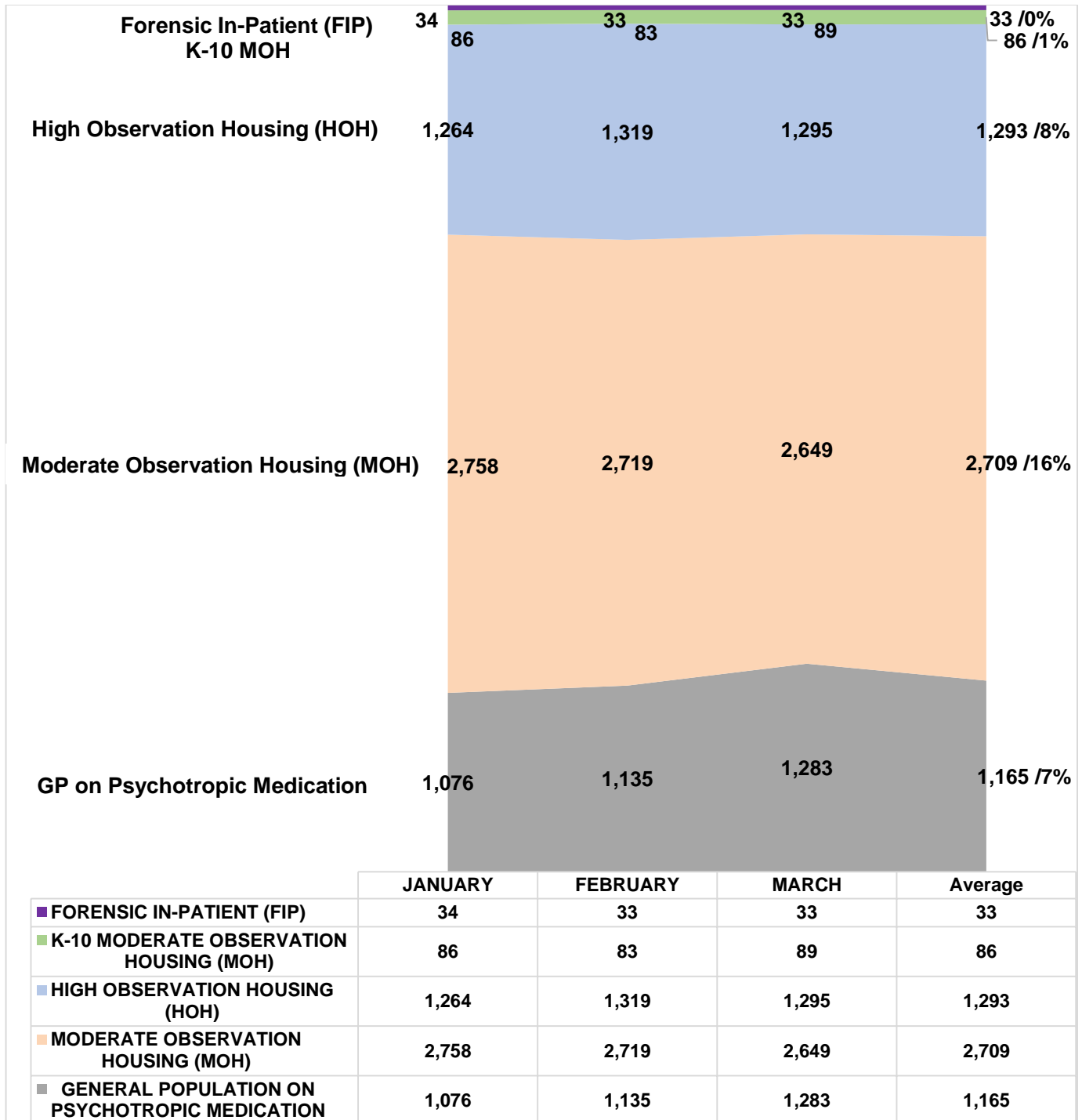
Sentence Status 1	January			February			March			Quarter 1 Average		
	With Hold	No Hold	Total	With Hold	No Hold	Total	With Hold	No Hold	Total	With Hold	No Hold	Total
\$1 - \$25,000	14	218	232	12	230	242	15	239	254	14	229	243
\$25,001 - \$26,000	0	20	20	2	27	29	1	25	26	1	24	25
\$26,001 - \$50,000	26	607	633	26	593	619	23	605	628	25	602	627
\$50,001 - \$100,000	34	793	827	34	792	826	39	769	807	36	785	820
\$100,001 - \$500,000	69	1,280	1,349	77	1,284	1,361	71	1,269	1,340	72	1,278	1,350
\$500,001 - \$1 Million	59	1,335	1,394	57	1,322	1,378	55	1,347	1,402	57	1,335	1,391
No Bail	452	2,229	2,681	476	2,313	2,789	471	2,354	2,825	466	2,299	2,765
Total	656	6,482	7,138	684	6,561	7,245	674	6,607	7,281	671	6,550	7,221

**The bail reflected is not necessarily the bail at the time of arrest. Once remanded by the court, the bail amount may change.*

** Information encompassed in this report/document depicts data related to a specific date and time. Data may differ based on numerous factors related to an inmate's status, disposition, facility, etc. Information may differ based on systems queried, archived information, date/time parameters or numerous other factors. Information in disparate reports should not be combined as data sets may be inconsistent in queries and responses.*

MENTAL HEALTH INMATE POPULATION

This quarter the overall inmate population was 16,531; the mental health population accounted for 32 percent of this population. Currently, inmates identified with Mental Health needs requiring specialized housing moderate or high observation housing, account for 25 percent of the overall population. This remaining 7 percent have been treated and continue to receive psychotropic medication while housed in general population.



* Information contained is based on a snapshot of the daily inmate population purge every Tuesday.

MISDEMEANOR INCOMPETENT TO STAND TRIAL (MIST)

The Los Angeles County Jail houses inmates who are awaiting trial for misdemeanor charges who have been found to be incompetent to stand trial. This quarter the average number of inmates on MIST is 245.

Misdemeanor Incompetent to Stand Trial (MIST)									
January			February			March			Quarterly Average
Male	Female	Total	Male	Female	Total	Male	Female	Total	
175	50	225	197	57	254	195	62	257	245

* Information contained is based on a snapshot of the daily inmate population purge every Tuesday.

AMERICANS WITH DISABILITIES ACT (ADA)

ADA Housing is used to accommodate inmates with mobility limitations and/or physical disabilities. This quarter the average number of inmates requiring ADA is 390 which is slightly higher than last quarter's (379) total.

Americans With Disabilities Act (ADA)				
Disability	January	February	March	Quarterly Average
Seeing Impaired - I	16	18	20	18
Hearing Impaired - D	16	15	18	16
Wheelchair - W	187	186	192	188
Mobility Impaired – U	165	158	178	167
Monthly Total	384	377	408	390

* Information contained is based on a snapshot of the daily inmate population purge every Tuesday.

MEDICAL HOUSING

Medical Outpatient/Specialty Housing (MOSH) is provided to inmates who require a level of medical treatment beyond that of stabilized medication distribution (pill call). The MOSH area in MCJ is also used to house inmates with mobility issues.

Additional Medical Housing – Not ADA Designated				
Housing Area	January	February	March	Quarterly Average
Correctional Treatment Center (CTC)	109	110	113	111
Los Angeles County Medical Center (LCMC)	23	24	21	23
*MCJ Medical/Clinic	341	334	343	339
Monthly Total	473	468	477	473

* Includes some ADA housing.

** Data are averages gathered from Facility Count Sheet every Tuesday.

IN-CUSTODY PROGRAMS

LA COUNTY INMATE IN-CUSTODY PROGRAMS

The Los Angeles County Jail offers several in-custody programs. Programs vary from a number of in-custody work assignments, vocational job training, education, and life skill classes, as well as fire camp training and California Department of Corrections and Rehabilitation fire camp placement for AB109 inmates. Various programs awarded sentenced inmates additional time credits for their participation pursuant to the California Penal Code:

CREDIT EARNINGS

Program	Penal Code	Credit Earned	Type of Inmate
Sentenced GT/WT	4019 PC	Day-for-Day (1:1)	All Sentenced Inmates
Conservation	4019.1 PC	One and one half-for One (1.5:1)	All Sentenced Inmates
Fire Camp	4019.2 PC	Two-for-One (2:1)	AB109 Sentenced Inmates
Milestone	4019.4 PC	Up to 6 weeks per year	AB109 Sentenced Inmates

CONSERVATION WORK PROGRAM (CWP)

The Conservation Work Program (CWP) requires inmates to complete their adjusted sentence while working in various job classifications, giving them the skills and work discipline necessary to increase their chances of success once released. Effective January 2015, all sentenced offenders, including Traditional County Sentenced (TCS) inmates are eligible to receive credits pursuant to Penal Code Section 4019.1. For this quarter, approximately 2,737 offenders (17% of the population) participated in CWP.

CONSERVATION WORK PROGRAM (CWP)				
Inmate Type	January	February	March	Quarterly Average
Inmates Participated In Programs	2,618	2,734	2,859	2,737

** Information contained is based on a snapshot of the daily inmate population purge every Tuesday.*

EDUCATION BASED INCARCERATION PROGRAMS (EBI-MILESTONE)

The Education Based Incarceration Program (EBI) uses traditional and nontraditional education which is designed to reduce incarceration by increasing the educational, civic, social, economic, and life skills of its participants. Offenders who are sentenced are eligible to receive credits pursuant to Penal Code 4019.4. For this quarter, a total of 838 Milestone credits were awarded.

FIRE CAMP TRAINING PROGRAM

Fire Camp Training and California Institute for Women (CIW) training are aligned under the Conservation Work Program (CWP). This program is the first step of training before an inmate may participate in a State facilitated Fire Camp Program overseen by the California Department of Corrections and Rehabilitation (CDCR). Offenders who are sentenced under AB109 are eligible to receive credits pursuant to Penal Code 4019.1. The average number of inmates enrolled in the Fire Camp training program for this quarter was 65.

FIRE CAMP TRAINING CAMP				
Housing Type	January	February	March	Quarterly Average
PDC Fire Camp Training (Men)	67	74	48	63
CIW Fire Camp Training (Women)	3	1	2	2
Monthly Totals	70	75	50	65

CALIFORNIA DEPARTMENT OF CORRECTIONS AND REHABILITATION (CDCR) **FIRE CAMP PROGRAM**

Once an inmate passes all necessary requirements in the Fire Camp Training Program located at PDC East facility, they are transferred to one of five state contracted fire camp sites where they will serve the remainder of their adjusted sentence. Offenders who are sentenced under AB109 are eligible to receive credits pursuant to Penal Code 4019.2. The average number of inmates assigned to CDCR Fire Camps for this quarter was 49.

CDCR FIRE CAMP				
Fire Camp Locations	January	February	March	Quarterly Average
Acton Fire Camp	10	9	14	11
Francisquito Fire Camp	9	8	14	10
Holton Fire Camp	17	16	21	18
Julius Klein Fire Camp	6	4	14	8
Malibu Women's Fire Camp	1	2	1	1
Monthly Totals	43	39	64	49

BACK ON TRACK PROGRAM

The Back on Track (BOT) program began in February 2015 and is overseen by EBI staff. The program delivers education and comprehensive reentry services to offenders before and after a participant is released from jail. The program focuses on the critical time following an inmate's release from jail, by providing the seamless reentry services vital for success, including employment and life skill services. This program is available to inmates who have been sentenced under AB109 and are eligible to receive Milestone credits. They must be enrolled in the program for 18 months—divided into 9 months in-custody and 9 months out-of-custody.

Back On Track	January	February	March	Quarterly Average
South Barrack	72	56	63	64

In-Custody S.T.A.R.T

The jail based START treatment services began at CRDF in February 2016 providing substance use disorder (SUD) treatment services to 50 women on any given day. In May of 2017, the program expanded to treat up to 90 women. In May 2017 services began at MCJ for up to 90 gay and transgender inmates and at PDC South facility treating up to 200 men in general population on any given day. In March 2018, services commenced at TTCF to treat up to 90 men with co-occurring mental health and SUD. Treatment services include screening, clinical assessment, group and individual counseling, case management services, medication assisted treatment, re-entry planning and care coordination with CTU and transportation to community based services post release.

In-Custody S.T.A.R.T (CRDF)	January	February	March	Quarterly Average
Enrolled	97	89	96	94
Completed	51	0	36	29

In-Custody S.T.A.R.T (MCJ)	January	February	March	Quarterly Average
Enrolled	62	66	81	70
Completed	21	18	21	20

In-Custody S.T.A.R.T (PDC)	January	February	March	Quarterly Average
Enrolled	201	187	199	196
Completed	35	30	22	29

In-Custody S.T.A.R.T (TTCF)	January	February	March	Quarterly Average
Enrolled	64	85	71	73
Completed	34	0	21	18

**Services at TTCF began in March 2018.*

ALTERNATIVES TO CUSTODY PROGRAMS

ALTERNATIVES TO CUSTODY PROGRAMS

The Community Transition Unit (CTU), the Community Based Alternatives to Custody Unit (CBAC), and the Compliance Team work together by utilizing a variety of alternatives to custody programming options in an effort to enhance an inmate's chance of success upon release. These programs are conducted in collaboration with local agencies including Community and Faith Based Organizations, Department of Mental Health (DMH), Department of Public Health (DPH), and other organizations. It is the Department's goal to program inmates from intake through re-entry into the community. With this approach, we hope to increase public safety and reduce the rate of recidivism.

Supported by release planning overseen by the CTU, and in partnership with contracted services, inmates are provided re-entry assistance through linkages to services that are initiated while they are in-custody and continued upon release. Through the Alternatives to Custody (ATC) programs, qualifying inmates are afforded the opportunity to complete the remaining portion of their sentence in a community treatment program. Inmates who do not qualify for ATC due to security or other reasons are referred to community providers for re-entry assistance.

The ATC programs include:

Substance Treatment and Reentry Transition (S.T.A.R.T)

The Substance Treatment and Re-entry Transition (START) program is a Department Public Health, Substance Abuse Prevention Control (SAPC) funded program that places eligible male and female inmates into residential substance use disorder (SUD) treatment programs on electronic GPS monitoring as an alternative to custody (ATC) program.

Female Programs

The Female Programs are funded through community grants. They work directly with various residential programs approved by LASD, but not affiliated with the START program, and they offer treatment beds for inmates under the ATC program. Several programs cater to specific clientele who fit a specified demographic in regards to age and gender.

Veteran's Administration (VA)

The Veteran's Administration (VA) funds SUD residential treatment, under the ATC program for inmates who are confirmed to be a veteran entitled to VA Benefits. The treatment programs are approved by the VA and are vetted by LASD.

Transitional Case Management Program (TCM)

The Transitional Case Management Program (TCM) is a Department of Public Health (DPH) funded program, whereby DPH employees refer Human Immunodeficiency Virus (HIV) infected inmates to a residential substance use disorder (SUD) treatment facility, approved and vetted by LASD, under the ATC program.

TARZANA TREATMENT CENTER DMH/SUD PROGRAM

Tarzana Treatment Center, in partnership with LASD, DHS Correctional Health, and the Department of Mental Health, has made available 40 total beds for inmates with a co-occurring mild to moderate mental health diagnosis, and a SUD. Inmates are identified by DHS Jail Linkage staff and referred to Tarzana treatment for assessment and acceptance. Inmates must still qualify for ATC programming through a validated risk assessment and criminal history review.

MENTAL HEALTH DIVERSION – NORMANDIE VILLAGE/GATEWAY

Normandie Village treats eligible male N3 inmates with mental illness who are a low security risk, and in a stabilized condition. They are selected to complete the remaining 60-180 days of their sentence in a 42 bed community-based Institution for Mental Disease (IMD) step-down facility.

For acceptance into these programs, inmates must volunteer to participate in services and meet the following criteria:

1. Be 18-54 years of age
2. Must have a primary Axis I major psychiatric diagnosis
3. May have a secondary Axis I diagnosis of substance abuse
4. Must not be a registered sex offender
5. Must not have a fire setting history
6. Must be ambulatory
7. Must not have a serious or life-threatening medical problem
8. Must not require treatment in a locked setting
9. Must have applied for Supplemental Security Income (SSI)

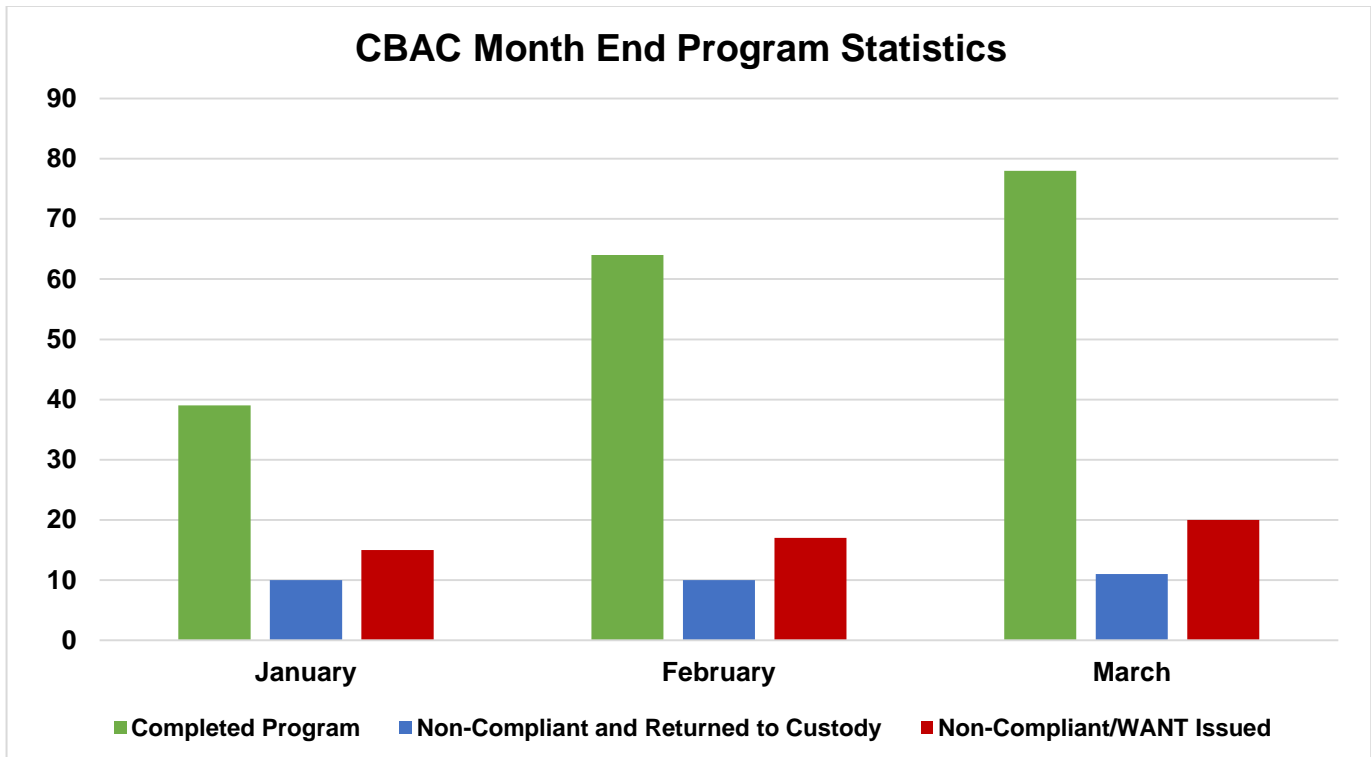
Program Quarterly Statistics	Enrolled	Completed	Returned to Custody	Absconded
START	13	12	2	0
Female Programs	0	1	0	0
Veterans	1	1	0	0
Transitional Case Management	0	0	0	0
Mental Health Programs	2	0	0	0

COMMUNITY BASED ALTERNATIVES TO CUSTODY (CBAC)

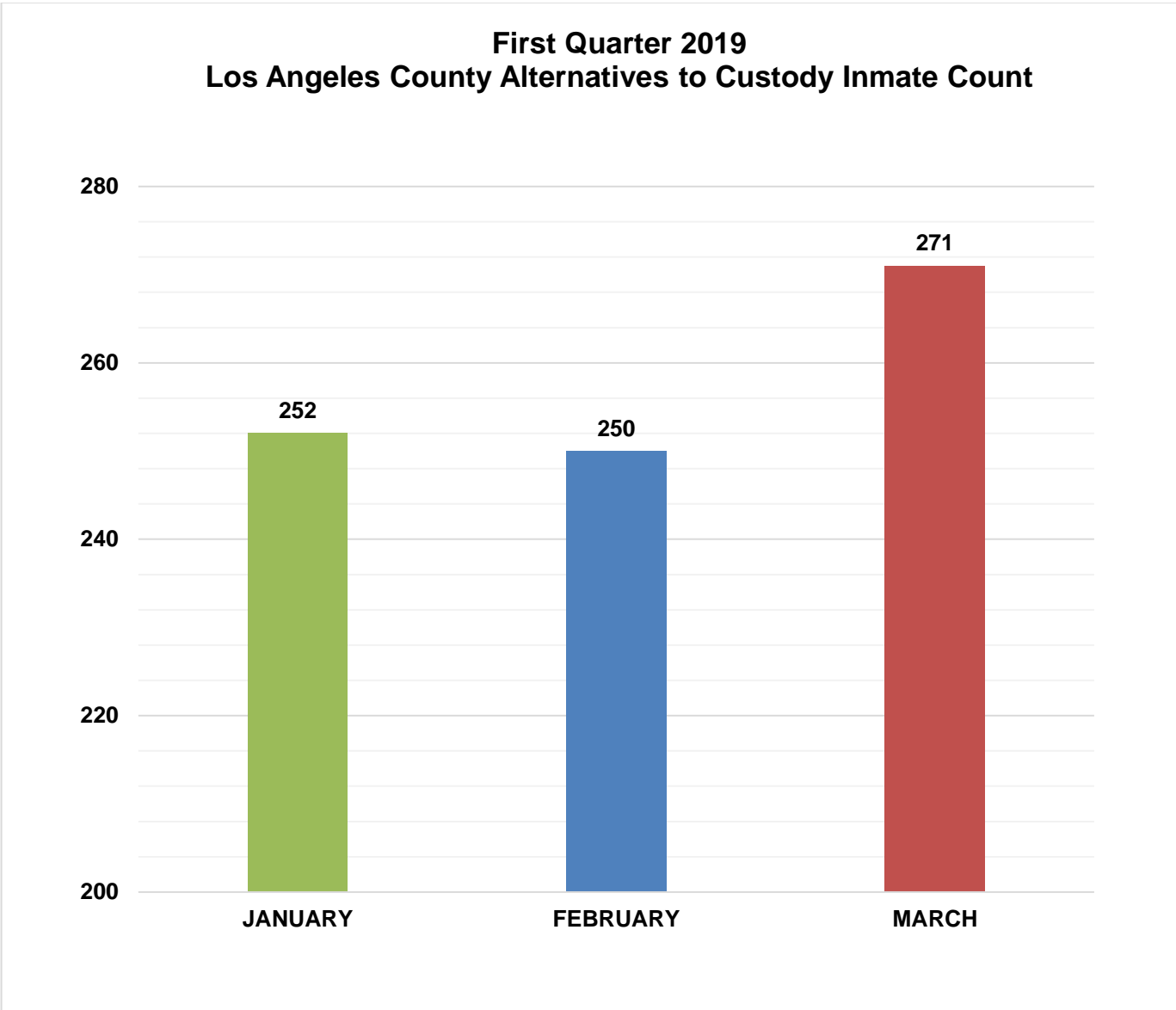
The PMB's CBAC unit identifies low risk sentenced offenders within the jail population who qualify to finish their remaining sentence in and out-of-custody alternative environment. Although these individuals are outside of traditional custody, they are still under the jurisdiction of the Department.

CBAC Monthly Placement									
Program	January			February			March		
	M	F	Total	M	F	Total	M	F	Total
Electronic Monitoring Program	25	0	25	14	5	19	33	6	39
Weekender Work Program	24	0	24	24	1	25	31	1	32
Work Release Program	45	12	57	35	8	43	43	8	51
Monthly Totals	94	12	106	73	14	87	107	15	122

The graph below depicts the total number of offenders who successfully completed the remainder of their sentence on a CBAC program. It also shows the number of offenders who failed to complete the program, and with the efforts of the PMB Compliance Unit, were returned back to finish their sentence, and those who failed to complete the program and were not returned back to custody.



LA COUNTY ALTERNATIVES TO CUSTODY INMATE POPULATION



2019 Quarterly ATC ADIP
258

Includes Community Based Alternatives to Custody (CBAC), Fire Camp and inmate station workers.

RE - ENTRY ASSISTANCE

COMMUNITY RE-ENTRY AND RESOURCE CENTER (CRRC)

The information below are recently released inmates and inquiries and/or contacts made by members of the general public who have been assisted with services at the CRRC for the first quarter of 2019.

Inquiry Demographic Population	January	February	March	Total	Average
General Release	238	283	325	846	282
General Public	73	86	98	257	86
Alternative to Custody Program	4	6	0	10	3
Coordinated Release	103	108	93	304	101
Work Release	4	4	5	13	4
Phone Referral	0	0	0	0	0
Monthly Totals:	422	487	521	1,430	477

Inquiry Demographic Gender	January	February	March	Total	Average
Male	383	430	386	1,199	400
Female	54	68	137	259	86
Monthly Totals:	437	498	523	1,458	486

CTU personnel visit the Inmate Reception Center release area to educate and remind inmates waiting to go home about services available at the CRRC. Walks of the release area are performed every 90 minutes.

	January	February	March	Total	Average
Number of 90 Minute Contact Walks	77	68	73	218	73
Number of Inmates Contacted	2,539	2,133	2,456	7,128	2,376
Number of Flyers Distributed	2,105	1,706	1,760	5,571	1,857

CTU COORDINATED RELEASES TO VARIOUS PROGRAMS

The final 90 days leading to an inmate's release from custody are the most critical in ensuring a successful transition from Custody to Community Based Organization (CBO) Treatment Centers. During the time leading up to their release, inmates are interviewed several times by the CBO Staff and members of the Community Transition Unit to ensure that they are matched up with a suitable treatment provider.

The coordinated release process helps to create a trust between law enforcement, inmate participants, and CBO's. The CTU's ultimate goal is to provide a successful recovery and re-entry into the community and to ultimately decrease recidivism.

	January	February	March	Total	Average
Coordinated Release	158	153	183	494	165

CTU VITAL RECORDS

Through the Vital Records Program, LASD staff members have been deputized by the County Registrar-Recorder to facilitate birth certificate applications for inmates born in Los Angeles County, who have requested a certified copy. The fee of \$28 for certified copies of birth certificates is funded by the Inmate Welfare Fund.

All inmates in custody are eligible to apply for a California ID Card. The issued ID's are provided to the inmates upon their release. The inmates must still report to the DMV to obtain a driver license following their release.

Records Processed	January	February	March	Quarterly Total	Average
DMV - California Identification Card	357	242	320	919	306
RECORDS – Birth Certificate	405	278	346	1,029	343
Totals	762	520	666	1,948	649

Records Issued	January	February	March	Quarterly Total	Average
DMV - California Identification Card	215	13	0	228	76
RECORDS – Birth Certificate	355	301	238	894	298
Totals	570	314	238	1,122	374

Due to a change in the DMV Cal ID forms, applications for the California Identification cards were withheld in February and March and processed in the following months.