



CUSTODY DIVISION QUARTERLY REPORT

April - June 2018

Los Angeles County Sheriff's Department

Jim McDonnell, Sheriff

TABLE OF CONTENTS

Executive Summary.....	3
1. Population Trends.....	4
LA County Inmate Population Graphs	
Population Overview	
Yearly ADIP Trend	
Arrests, Bookings and Releases	
Release Practices	
Homeless and Veteran	
AB109 Split and Non-Split Sentences	
2. Facilities Overview.....	12
Rated Capacities - Board of State and Community Corrections	
Jail Housing Facilities	
Men's Central Jail	
Twin Towers Correctional Facility	
Century Regional Detention Center	
Pitchess Detention Center – East	
Pitchess Detention Center – North	
Pitchess Detention Center – South	
North County Correctional Facility	
3. Population Overview.....	19
Inmate Population Demographics	
Inmate Population Offender Age Groups	
Classification and Re-Classification	
Re-classification Statistics	
Inmate Population Breakdown	
Crime Classification Statistics	
Inmates with M7	
Pre-Trial Population	
Pre-Trial Misdemeanor Population	
Pre-Trial Bail Holds	
Mental Health Inmate Population	
Misdemeanor Incompetent to Stand Trial (MIST)	
Americans with Disabilities Act (ADA)	
Medical Housing	
4. In-Custody Programs.....	33
Credit Earnings	
Conservation Work Program (CWP)	
Fire Camp Training Program	
CDCR Fire Camp Program	
Education Based Incarceration Program (EBI)	
Back on Track (BOT)	
In-Custody S.T.A.R.T Program	
Program Credit Earning Chart	

5. Alternatives to Custody Programs.....	38
Community Transition Unit (CTU)	
Substance Abuse Treatment and Reentry Transition (S.T.A.R.T)	
Tarzana Treatment Center DMH/SUD Program	
Mental Health Diversion – Normandie Village/Gateway	
Community Grant Beds	
Community Based Alternatives to Custody (CBAC)	
6. Re-Entry Assistance.....	42
Affordable Care Act (ACA)	
Community Re-Entry and Resource Center (CRRC)	
CTU Coordinated Releases to Various Programs	
CTU Vital Records	

EXECUTIVE SUMMARY

The Los Angeles County Sheriff's Department (LASD) is committed to maintaining a secure and constitutional jail system. As part of this effort, a periodic report is essential to better understand and quantify population trends. This ***Custody Division Quarterly Report*** reports data collected during the Second Quarter of 2018, and is produced by the Population Management Bureau (PMB) Analysis Unit.

The average daily inmate population (ADIP) during the second quarter of 2018 was 16,948. This number includes approximately 333 inmates participating in community-based alternatives to custody programs. This is minor less than the second quarter of 2017 ADIP average of 17,069, including approximately 449 who participated in the community-based alternative to custody programs.

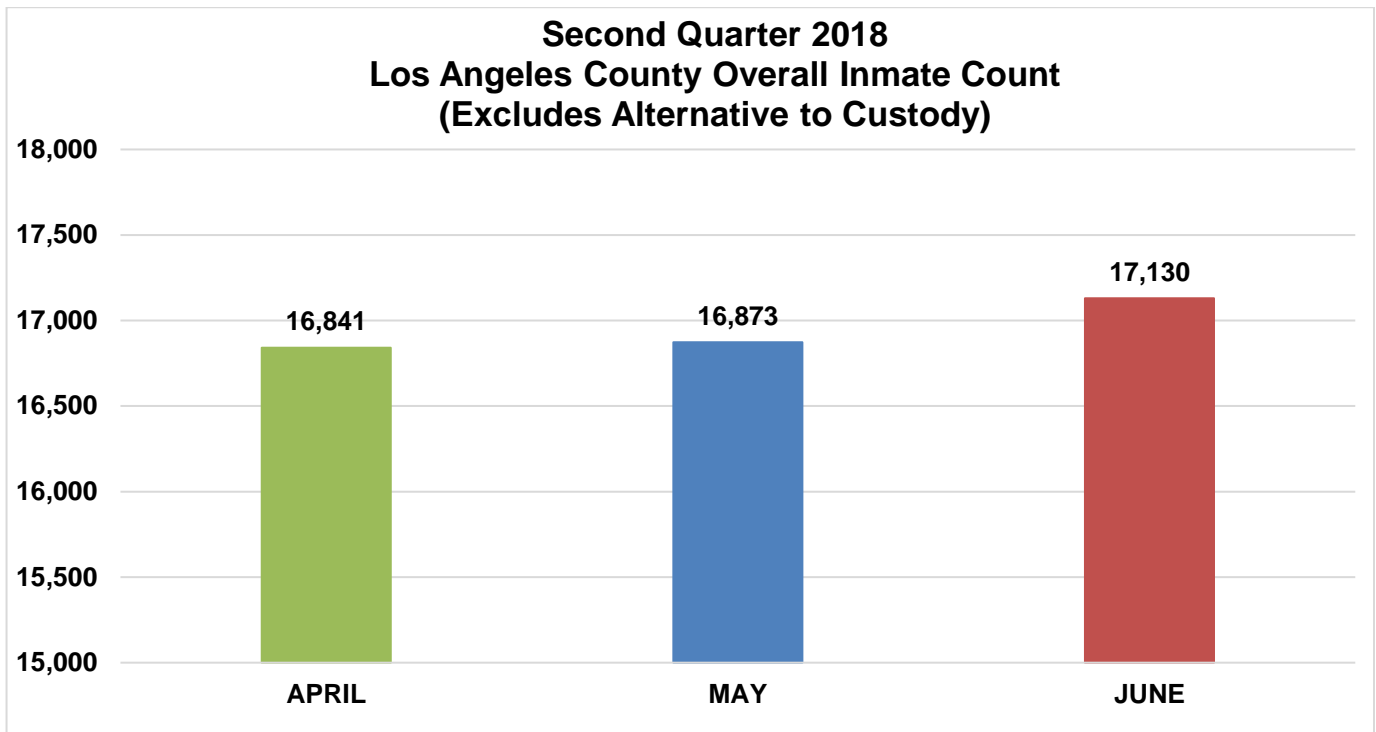
As conditions of over-crowding continued in this quarter, in late-March 2018 the Department extended the release provision under penal code section 4024.1, which grants the Sheriff the authority to accelerate the release, discharge, or expiration of sentence date of sentenced inmates up to a maximum of 30 days or 10 percent off their term of sentence. Prior to March 2018, the Department utilized this section by allowing inmates five (5) additional days off their sentence, due to the critical need for space, it was extended to the maximum 30 days.

Traditionally the department has utilized the early release of inmates to help manage the population. During this quarter, inmates serving traditional county sentence completed 10 percent of their court ordered sentences. Inmates who were serving sentences for designated serious and/or violent offenses (M7 charges) and those sentenced under 1170 PC (AB109) continued to serve 100 percent of their sentences, minus any time credits earned. For further information regarding this quarter's percentage release criteria see page 9 of this report.

The Traditional County Sentenced (TCS) population this quarter was approximately 1,335, and the number of inmates sentenced under 1170 PC was approximately 2,788. These numbers present a little less than last quarter's totals. The number of inmates receiving mental health treatment increased slightly to 5,093, and to comprise approximately 30 percent of the total inmate population.

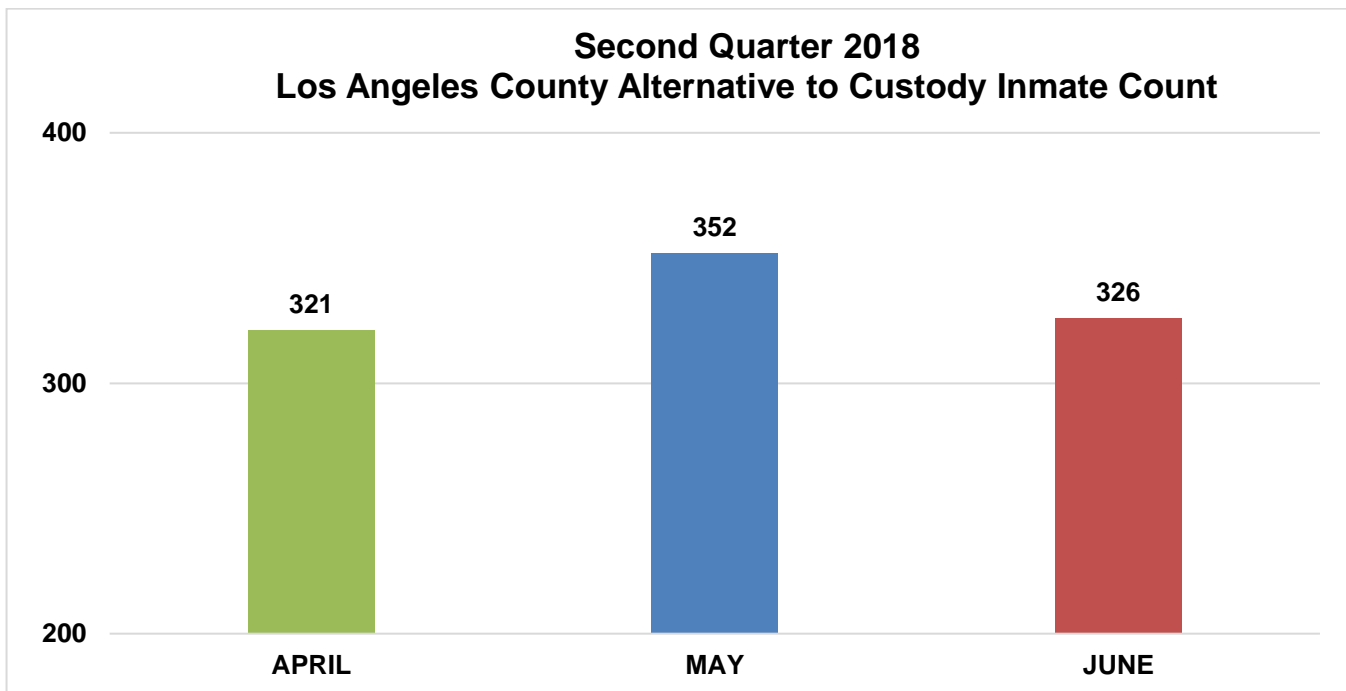
POPULATION TRENDS

LA COUNTY INMATE POPULATION



2018 Quarterly Overall Division ADIP
16,948

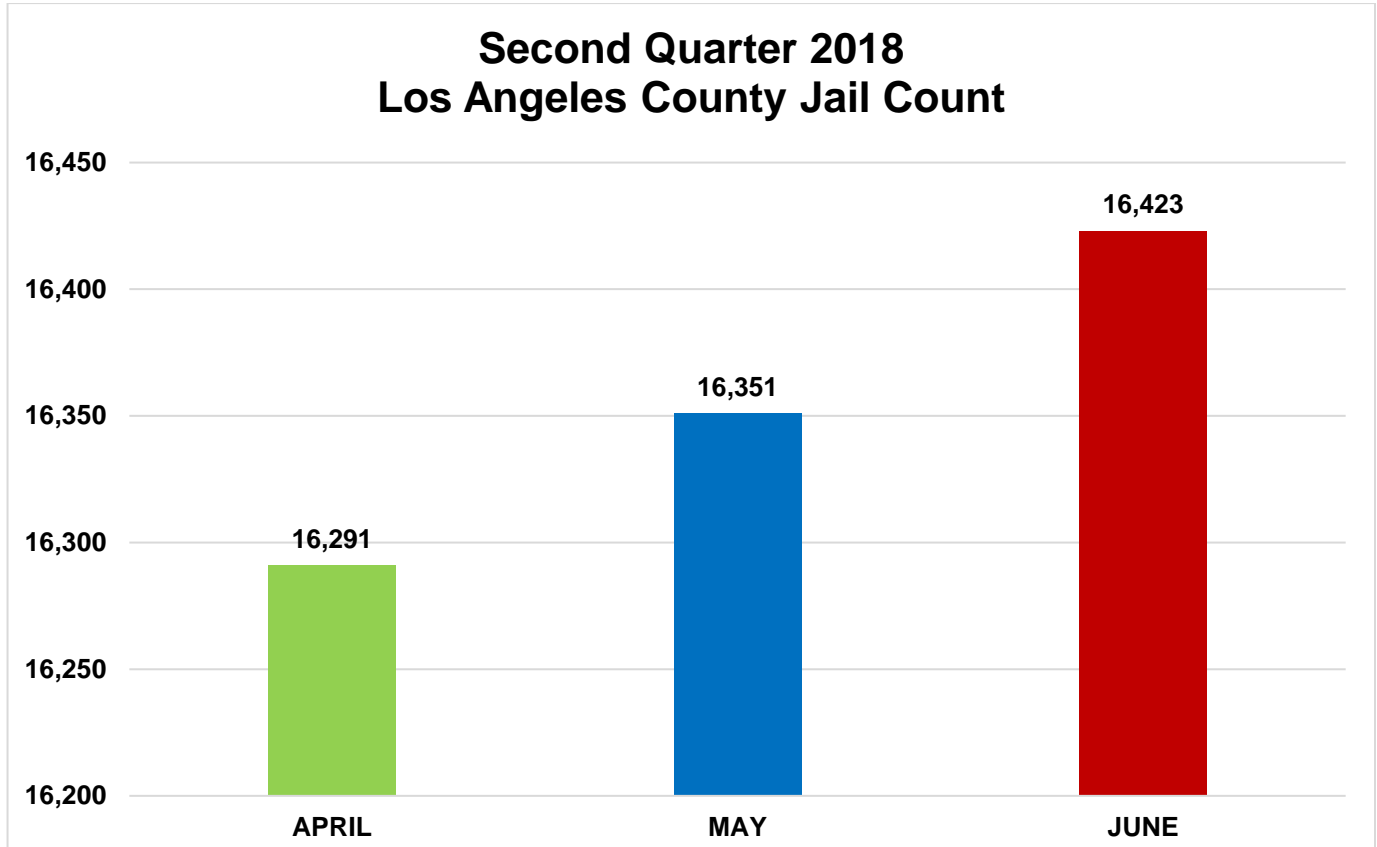
Quarterly Division ADIP will differ from Quarterly Facility ADIP due to the inclusion of Inmates processing into IRC.



2018 Quarterly ATC ADIP
333

POPULATION OVERVIEW

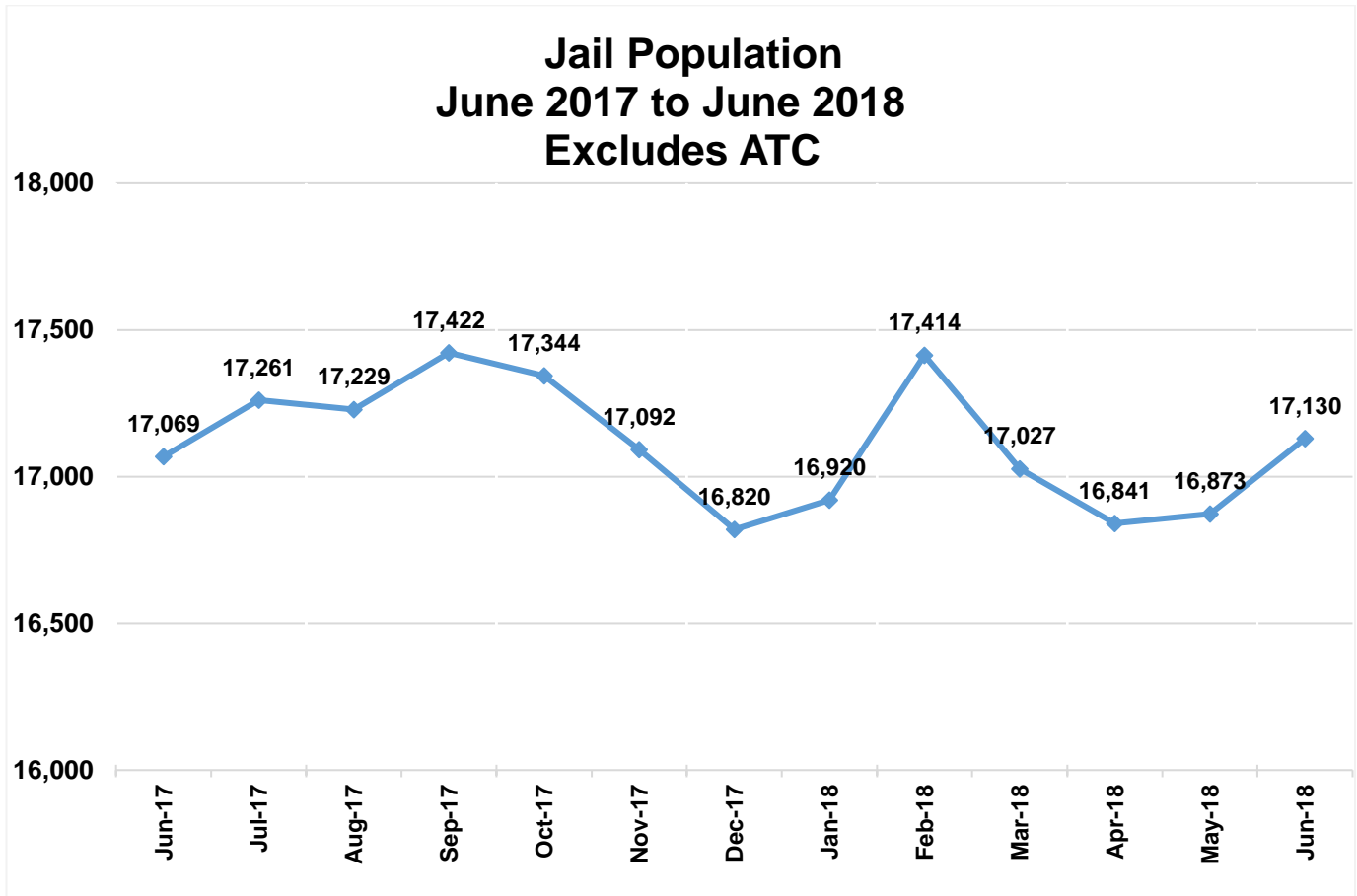
The inmate population within the County jail system had a slight increase during this second quarter of 2018.



2018 Quarterly Custody Facility ADIP
16,355

Facility Jail Count reflects all inmates housed in a LA County jail bed for the quarter. Excludes ATC and IRC.

Yearly ADIP Trend



Seven Year ADIP Comparison		
Year	ADIP	Notes
2011	15,014	(Oct - AB109 enacted)
2012	18,043	
2013	18,687	
2014	18,680	(Nov - Prop 47)
2015	17,049	
2016	16,613	
2017	17,024	
2018*	17,034	(Data collected through June 2018)

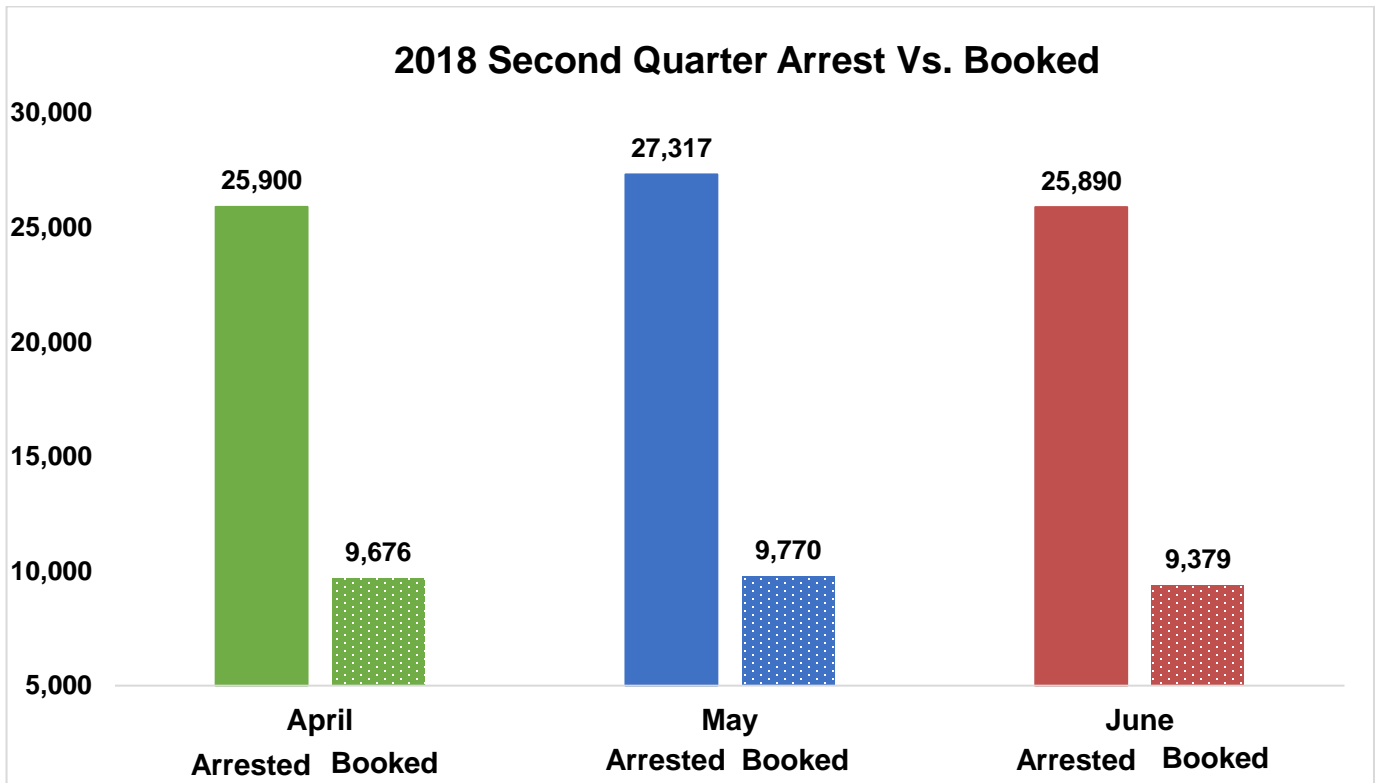
SECOND QUARTER 2018 - ARREST AND BOOKING STATS

Arrest activity increased by 5% over last quarter. The number of inmates booked into the LA County jail this quarter was increased by 5% over last quarter's number of inmates booked into custody (27,547).

	April		May		June		Quarterly Total	Quarterly Average	Quarterly %
	Monthly Total	%	Monthly Total	%	Monthly Total	%			
Felony	9,446	36%	9,700	36%	9,221	36%	28,367	9,456	36%
Misdemeanor	15,247	59%	16,379	60%	15,568	60%	47,194	15,731	60%
Juvenile - non criminal	55	0%	50	0%	29	0%	134	45	0%
Other	1,152	5%	1,188	4%	1,072	4%	3,412	1,137	4%
Total Arrested	25,900		27,317		25,890		79,107	26,369	
Total Booked into LA County	9,676	37%	9,770	36%	9,379	36%	28,825	9,608	36%

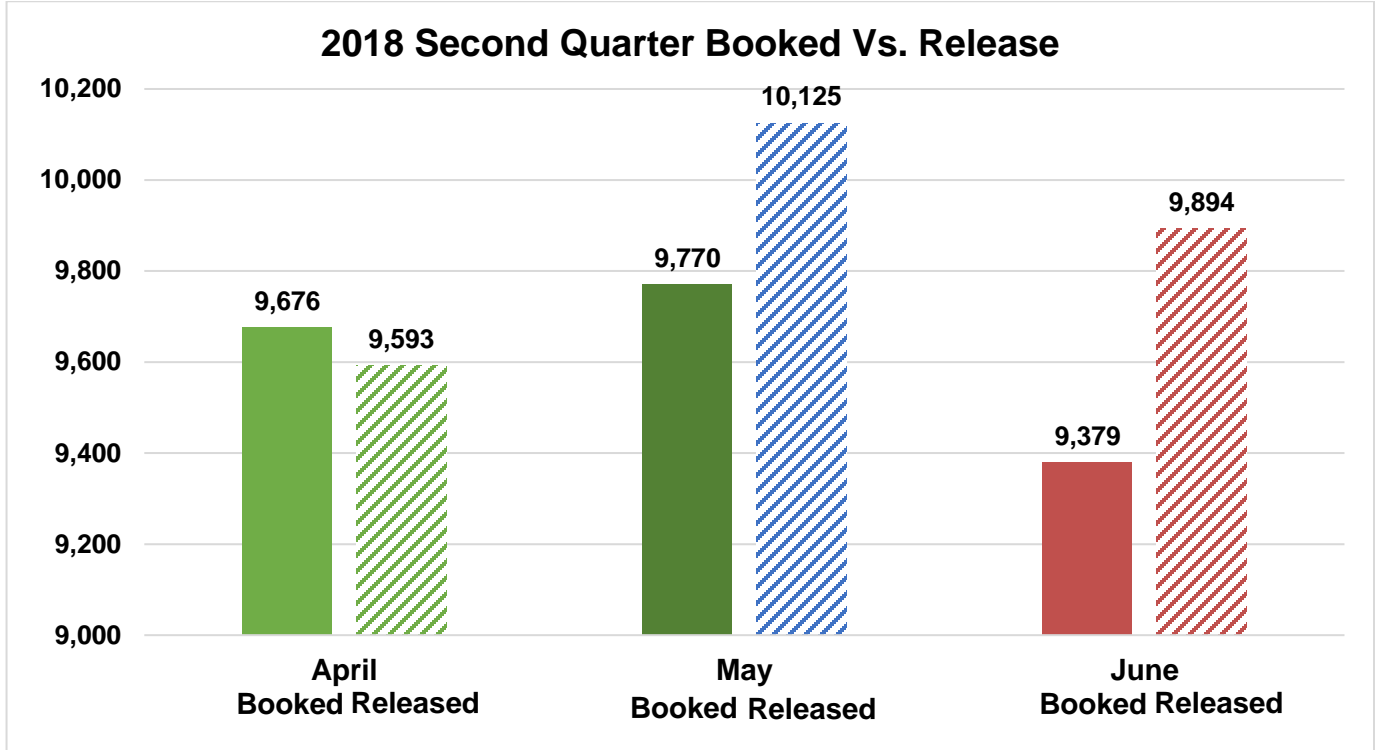
SECOND QUARTER 2018 - ARRESTS VS. BOOKINGS

The graph below compares the average Arrests and Bookings for this quarter.



SECOND QUARTER 2018 – BOOKINGS VS. RELEASES

LASD averaged approximately 9,871 releases this quarter. That’s an increase of approximately 133 releases compared to last quarter (average of 9,738).



LA COUNTY JAIL RELEASE PRACTICES

Due to conditions of overcrowding, during this quarter traditional county sentenced inmates were subject to early release under the following conditions.

Month	Release Criteria Male	Release Criteria Female	*M7 Release Criteria	**Short Sentence Male	**Short Sentence Female
April	10%	10%	100%	180 days	180 days
May	10%	10%	100%	180 days	180 days
June	10%	10%	100%	180 days	180 days

*M7 are inmates who have designated serious and/or violent offences or have notoriety in the community are classified as M7, which requires their record jacket go through extra ‘security’ checks upon release from Sheriff’s custody.

**Shorts are inmates who are sentenced to a term in county jail, which after all legal credits are awarded and the current jail percentage time is considered, are immediately released from Sheriff’s custody after processing from court.

HOMELESS AND VETERAN

Homeless Population

The chart below provides an average breakdown of the inmate population who stated they were homeless by gender, major race and age category, which is 15% of the total population.

	April	May	June	TOTAL	AVERAGE
Male	2,102	2,184	2160	6,446	2,149
Female	368	402	431	1,201	400
Total	2,470	2,586	2,591	7,647	2,549

	April	May	June	TOTAL	AVERAGE
Hispanic	1,159	1,206	1,141	3,506	1,169
Black	691	699	755	2,145	715
White	546	602	613	1,761	587
Other	74	79	82	235	78
Total	2,470	2,586	2,591	7,647	2,549

	April	May	June	TOTAL	AVERAGE
18 to 25	370	420	414	1,204	401
26 to 34	843	874	851	2,568	856
35 to 39	339	410	351	1,100	367
40 to 44	280	237	301	818	273
45 & Older	638	645	674	1,957	652
Total	2470	2,586	2,591	7,647	2,549

Veteran Population

The chart below provides an average breakdown of the inmate population who stated they have served in the United State Military by gender, major race and age category, which is 2% of the total population.*

	April	May	June	TOTAL	AVERAGE
Male	308	308	332	948	316
Female	1	1	2	4	1
Total	309	309	334	952	317

	April	May	June	TOTAL	AVERAGE
Hispanic	80	93	97	270	90
Black	111	109	122	342	114
White	103	94	98	295	98
Other	15	13	17	45	15
Total	309	309	334	952	317

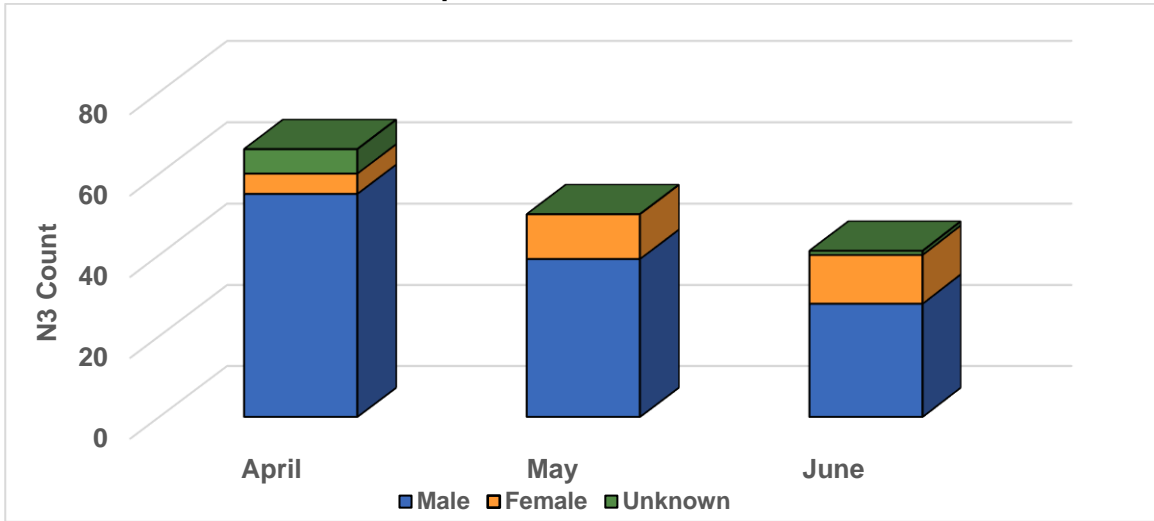
	April	May	June	TOTAL	AVERAGE
18 to 25	15	14	16	45	15
26 to 34	68	73	79	219	73
35 to 39	43	49	44	136	45
40 to 44	23	26	32	81	27
45 & Older	160	147	163	470	157
Total	309	309	334	952	317

*These are numbers based upon self-identification and have not been confirmed by the Veterans Administration.

AB109 Split and Non Split Sentence

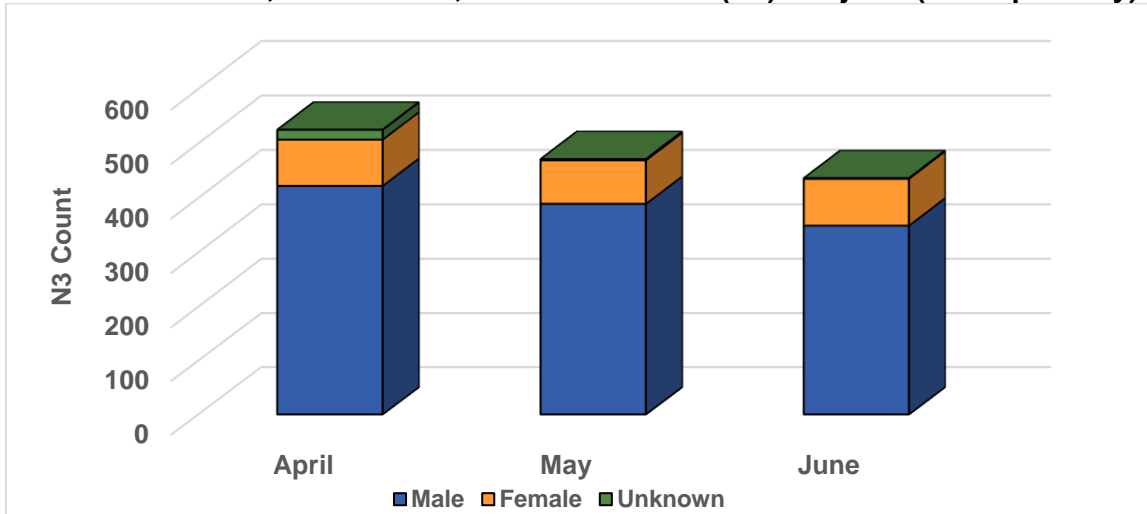
Under AB109, judges can impose a “split sentence” when sentencing a convicted defendant to time in jail. A split sentence requires a portion of the sentence served in custody, and a portion of the sentence served under supervision of the probation department in the community. The Split Sentence option in sentencing results in a shorter stay for inmates.

**Non-violent, Non-serious, Non-sex offender (N3) Subjects (Split Only)
April 2018 to June 2018**



	April	May	June	Average
Male	55	39	28	41
Female	5	11	12	9
Unknown	6	0	1	2
Summary	66	50	41	52

Non-violent, Non-serious, Non-sex offender (N3) Subjects (Non-Split Only)



	April	May	June	Average
Male	422	389	349	387
Female	85	80	86	84
Unknown	18	2	1	7
Summary	525	471	436	478

*Data queried by Probation from ISAB-JAIMS system

FACILITIES OVERVIEW

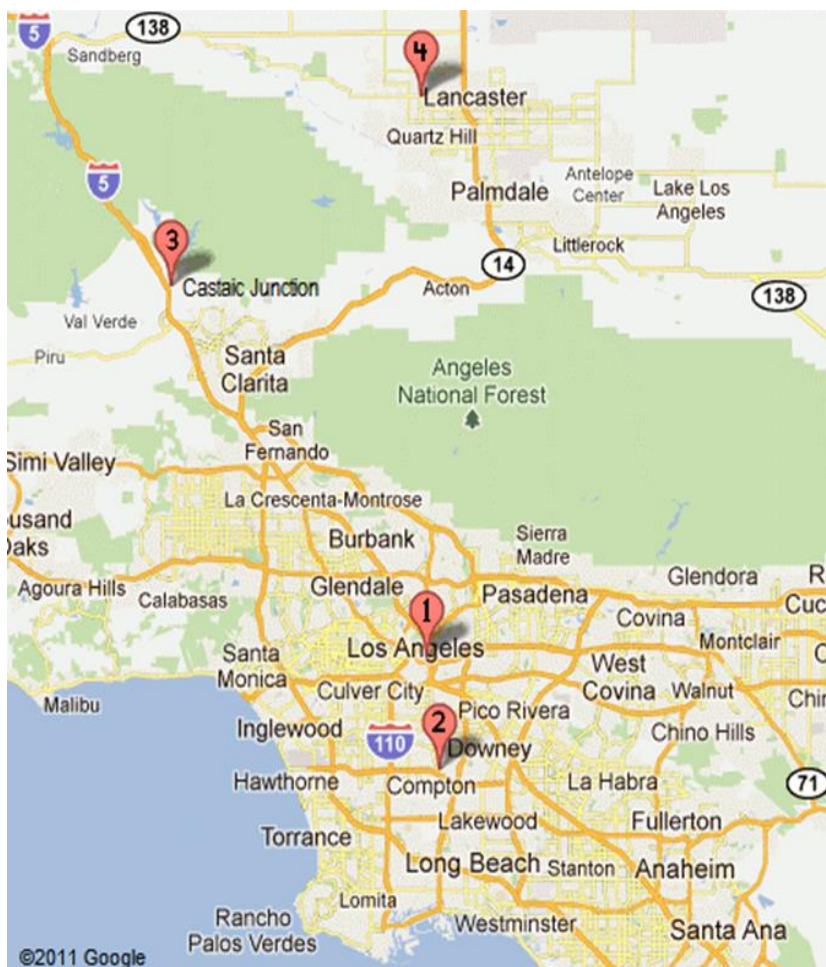
RATED CAPACITY

The Board of State and Community Corrections (BSCC) is a government body which recommends capacity limits for county jails. BSCC conducts biennial jail inspections; LASD was rated in April 2016.

Board of State and Community Corrections				
LASD Custody Facilities	BSCC Rated Capacity	Quarterly Facility ADIP	Above BSCC Rated Capacity	% BSCC Capacity
Men's Central Jail	3,529	4,257	728	121%
Twin Towers Correctional Facility	2,484	3,374	890	136%
Century Regional Detention Facility	1,708	2,068	360	121%
Pitchess Detention Center – East	926	58	-868	6%
Pitchess Detention Center – North	832	1,440	608	173%
Pitchess Detention Center – South	844	1,382	538	164%
North County Correctional Facility	2,214	3,777	1,563	171%

Total BSCC Rated Capacity*	Quarterly Facility ADIP	Total Above BSCC Rated Capacity	Total % BSCC Capacity	Total % BSCC Capacity Excluding East Facility
12,537	16,355	3,818	130%	140%

*Statistical data gathered from *Board of State and Community Corrections Inspection Report 11/2016*.



LA County Jail Facilities

- 1**
- Men's Central Jail (MCJ)
- Twin Towers Correctional Facility (TCF)
- Los Angeles County Medical Center (LCMC)
- Correctional Treatment Center (CTC)
- Inmate Reception Center (IRC)

- 2**
- Century Regional Detention Facility (CRDF)

- 3**
- Pitchess Detention Center (PDC)
- PDC East Facility
- PDC North Facility
- PDC South Facility
- North County Correctional Facility (NCCF)

- 4**
- Mira Loma Detention Center (MLDC)

JAIL HOUSING FACILITIES

MEN'S CENTRAL JAIL TOTAL INMATE POPULATION					
Security Level	April	May	June	Quarterly Average	% of Population
Security Level Low 1-4	978	971	951	967	23%
Security Level Medium 5-7	2,536	2,583	2,653	2,591	61%
Security Level Low High 8-9	712	704	664	693	16%
FACILITY TOTAL	4,226	4,258	4,268	4,251	100%
°SUB POPULATION HOUSED THROUGHOUT FACILITY					
Housing Type	April	May	June	Quarterly Average	
*Administratively Segregated Inmates (K-10)	311	308	324	314	
> Administratively Segregated Inmates (K-1)	13	14	13	13	
**Discipline	37	27	19	28	
General Population on Psychotropic Meds	805	845	856	835	
Inmate Workers	937	981	968	962	
LGBT (K-6 G) Inmates	337	335	340	337	
Medical/Clinic	357	368	366	364	
^Other (K-6T/B/C)	174	179	174	176	
Pro-Per	93	79	70	81	
School Housing (EBI)	438	438	442	439	
MOH (H.O.P.E. Program)	32	36	29	32	
Sexually Violent Predators	10	8	8	9	
Sex Crimes Against Children (K-6 Y) Inmates	233	243	252	243	
^^Developmentally Disabled	14	13	14	14	

° Sub population housed throughout facility includes those who are classified with special housing needs and are included in the total inmate population. An inmate may belong to more than one subpopulation

*K-10-Administratively segregated for various reasons including danger to self or others

>K-1 Law Enforcement related in custody

^ K-6T Contempt of court, K6B threatened by others, K-6C protective custody

**Majority of discipline inmates are now housed at TTCF

^^ Development Disable are combined with Blind/Deaf and Mental inmates. They were moved to MCJ from TTCF in January 2018.

**TWIN TOWERS CORRECTIONAL FACILITY
TOTAL INMATE POPULATION**

Security Level	April	May	June	Quarterly Average	% of Population
Security Level Low 1-4	671	641	615	642	19%
Security Level Medium 5-7	2,152	2,188	2,203	2,181	65%
Security Level Low High 8-9	515	543	575	544	16%
Facility Total	3,338	3,372	3,393	3,367	100%

°SUB POPULATION HOUSED THROUGHOUT FACILITY

Housing Type	April	May	June	Quarterly Average
* Administratively Segregated Inmates (K-10)	139	156	158	151
^ Administratively Segregated Inmates (K-1)	3	3	3	3
** Administratively Segregated Inmates (K-6B)	25	26	26	26
American's With Disabilities (ADA)	340	355	341	345
^^Developmentally Disabled	0	0	0	0
Discipline	36	44	46	42
Female General Population	48	24	19	30
Female Medical (CTC)	17	21	17	18
◇ Female School Housing (EBI)	14	0	0	5
◇ Female Workers	15	0	0	5
General Population on Psychotropic Meds Security Level 1-4	54	53	49	52
General Population on Psychotropic Meds Security Level 5-7	192	204	206	201
General Population on Psychotropic Meds Security Level 8-9	57	65	74	65
***Inmate Workers	0	0	0	0
LGBT (K-6 G) Inmates	76	80	81	79
Male School Housing (EBI)	442	518	525	495
Medical (CTC)	115	115	124	118
Mentally III – High Observation Housing (HOH)	971	977	979	976
Mentally III – Moderate Observation / Service Area (MOH)	2,292	2,333	2,375	2,333
Mentally III – Moderate Observation Housing (MOH) School Housing (EBI)	442	518	525	495
Mentally III – Moderate Observation Housing (MOH) Sex Crimes Against Children (K-6 Y) Inmates	138	129	131	133

° Sub population housed throughout facility includes those who are classified with special housing needs and are included in the total inmate population. An inmate may belong to more than one subpopulation

*K-10-Administratively segregated for various reasons including danger to self or others

**K-6B-Administratively segregated are at risk of assault in GP housing

^Related to Law Enforcement-segregated from general population for safety reasons

*** Inmate workers moved to MCJ because of ADA construction project in T271

**** ADA extended program therefore more participants beginning October, 2017.

***** EBI extended MOH program therefore more participants beginning October, 2017.

^^ Development Disable are mixed in with Blind/Deaf and Mental inmates, has moved to MCJ on 31-Jan-18, and not updated until 2/11/18.

◇ Female workers and School Program (EBI) moved to CRDF beginning April 14, 2018.

**CENTURY REGIONAL DETENTION CENTER
TOTAL INMATE POPULATION**

Security Level	April	May	June	Quarterly Average	% of Population
Security Level Low 1-4	674	655	625	651	31%
Security Level Medium 5-7	1,110	1,111	1,113	1,111	54%
Security Level Low High 8-9	296	294	318	303	15%
Facility Total	2,080	2,060	2,056	2,065	100%

°SUB POPULATION HOUSED THROUGHOUT FACILITY

Housing Type	April	May	June	Quarterly Average
Administratively Segregated Inmates (K-10)	33	34	33	33
Discipline	27	26	27	27
Inmate Workers	335	341	332	336
Medical/Clinic	7	6	6	6
Mentally III – High Observation Housing (HOH)	269	286	288	281
Mentally III – Moderate Observation / Service Area (MOH)	292	280	282	285
Other (K-6 B)	6	6	7	6
School Housing (EBI)	495	518	519	511
Sex Crimes Against Children (K-6 Y) Inmates	7	6	5	6

°Sub population housed throughout facility includes those who are classified with special housing needs and are included in the total inmate population.

An inmate may belong to more than one subpopulation

^K-10-Administratively segregated for various reasons including danger to self or others

**PITCHESS DETENTION CENTER – EAST FACILITY
TOTAL INMATE POPULATION**

Security Level	April	May	June	Quarterly Average	% of Population
Security Level Low 1-4	44	36	39	40	69%
Security Level Medium 5-7	13	16	26	18	31%
Security Level Low High 8-9	0	0	0	0	0
Facility Total	57	52	65	58	100%

°SUB POPULATION HOUSED THROUGHOUT FACILITY

HOUSING TYPE	April	May	June	QUARTERLY AVERAGE
Fire Camp Security Levels 1-4	44	36	39	40
Fire Camp Security Levels 5-7	13	16	26	18

°Sub population housed throughout facility includes those who are classified with special housing needs and are included in the total inmate population. An inmate may belong to more than one subpopulation

**PITCHESS DETENTION CENTER – NORTH
TOTAL INMATE POPULATION**

Security Level	April	May	June	Quarterly Average	% of Population
Security Level Low 1-4	241	239	230	237	17%
Security Level Medium 5-7	1,154	1,151	1,160	1,155	80%
Security Level Low High 8-9	58	43	45	49	3%
Facility Total	1,453	1,433	1,435	1,441	100%

°SUB POPULATION HOUSED THROUGHOUT FACILITY

HOUSING TYPE	April	May	June	QUARTERLY AVERAGE
Discipline	25	24	26	25
Inmate Workers	89	91	92	91
School Housing GP (EBI) Security Levels 1-7	285	278	283	282
School Housing (EBI) Security Levels 1-7 K6y	93	94	94	94
Sex Crimes Against Children Inmates (K-6 Y) Security Level 1-7	281	284	284	283
Mentally Ill - Moderate Observation Housing (MOH)	305	291	285	294

°Sub population housed throughout facility includes those who are classified with special housing needs and are included in the total inmate population

An inmate may belong to more than one subpopulation

♦Inmates housed at North Facility for disciplinary reasons

**PITCHESS DETENTION CENTER - SOUTH
TOTAL INMATE POPULATION**

Security Level	April	May	June	Quarterly Average	% of Population
Security Level Low 1-4	555	545	528	543	39%
Security Level Medium 5-7	832	840	845	839	61%
Security Level High 8-9	0	0	0	0	0%
FACILITY TOTAL	1,387	1,385	1,373	1,382	100%

°SUB POPULATION HOUSED THROUGHOUT FACILITY

Housing Type	April	May	June	Quarterly Average
Back on Track Security Level 1-7	49	46	48	48
School Housing (EBI) Security Level 1-7	362	427	416	402
Inmate Workers Security Level 1-7	471	481	481	478

°Sub population housed throughout facility includes those who are classified with special housing needs and are included in the total inmate population. An inmate may belong to more than one subpopulation

**NORTH COUNTY CORRECTIONAL FACILITY
TOTAL INMATE POPULATION**

Security Level	April	May	June	Quarterly Average	% of Population
Security Level Low 1-4	584	584	606	591	16%
Security Level Medium 5-7	2,031	2,068	2,169	2,089	55%
Security Level High 8-9	1,124	1,135	1,023	1,094	29%
Facility Total	3,739	3,787	3,798	3,774	100%

°SUB POPULATION HOUSED THROUGHOUT FACILITY

Housing Type	April	May	June	Quarterly Average
Administratively Segregated Inmates (K-10) Security Level 1-8	1	1	2	1
Administratively Segregated Inmates (K6-B) Security Level 1-8	107	112	113	111
Discipline Security Level 1-7	173	183	173	176
Inmate Workers Security Level 1-7	677	728	742	716
Medical/Clinic Security Level 1-7	10	6	10	9
School Housing (EBI) Security Level 1-8	119	123	142	128
Veterans	63	61	64	63

°Sub population housed throughout facility includes those who are classified with special housing needs and are included in the total inmate population.

An inmate may belong to more than one subpopulation

**K-10-Administratively segregated for various reasons including danger to self or others*

POPULATION OVERVIEW

INMATE POPULATION DEMOGRAPHICS

Racial demographics this quarter indicate the three most populous racial groups within the LA County Jail for both male and female offenders are Hispanic (51%), Black (30%), and White (15%).

COMBINED	April 2018		May 2018		June 2018		Quarterly Average	Quarterly %
	Race	Population	%	Population	%	Population		
Hispanic	8,636	51%	8,686	52%	8,853	52%	8725	51%
Black	5,023	30%	4,962	29%	5,015	29%	5000	30%
White	2,538	15%	2,564	15%	2,597	15%	2566	15%
All Others	600	4%	592	4%	604	4%	599	4%
Chinese	35	0%	37	0%	46	0%	39	0%
Filipino	24	0%	23	0%	25	0%	24	0%
Pacific Islanders	17	0%	13	0%	13	0%	14	0%
Japanese	2	0%	2	0%	2	0%	2	0%
American Indian	5	0%	8	0%	10	0%	8	0%
Total	16,880	100%	16,887	100%	17,165	100%	16,977	100%

MALE	April 2018		May 2018		June 2018		Quarterly Average	Quarterly %
	Race	Population	%	Population	%	Population		
Hispanic	7,681	52%	7,703	53%	7,870	53%	7751	53%
Black	4,340	30%	4,311	29%	4,339	29%	4330	29%
White	2,087	14%	2,100	14%	2,130	14%	2106	14%
All Others	524	4%	516	4%	529	4%	523	4%
Chinese	32	0%	34	0%	40	0%	35	0%
Filipino	20	0%	21	0%	24	0%	22	0%
Pacific Islanders	15	0%	11	0%	12	0%	13	0%
Japanese	1	0%	1	0%	1	0%	1	0%
American Indian	4	0%	7	0%	10	0%	7	0%
Total	14,704	100%	14,704	100%	14,955	100%	14,788	100%

FEMALE	April 2018		May 2018		June 2018		Quarterly Average	Quarterly %
	Race	Population	%	Population	%	Population		
Hispanic	955	44%	983	45%	983	45%	974	45%
Black	683	31%	651	30%	676	31%	670	31%
White	451	21%	464	21%	467	21%	461	21%
All Others	76	4%	76	4%	75	3%	76	3%
Chinese	3	0%	3	0%	6	0%	4	0%
Filipino	4	0%	2	0%	1	0%	2	0%
Pacific Islanders	2	0%	2	0%	1	0%	2	0%
Japanese	1	0%	1	0%	1	0%	1	0%
American Indian	1	0%	1	0%	0	0%	1	0%
Total	2,176	100%	2,183	100%	2,210	100%	2,191	100%

*Statistical data are averages gathered from *Custody Division Daily Briefing Report*.

INMATE POPULATION OFFENDER AGE GROUPS

The 26-34 year old cohort was the most frequently represented age group within the jail population this quarter, followed by the 18-25 year old cohort.

COMBINED	April 2018		May 2018		June 2018		Quarterly Average	Quarterly %
	Age Group	Population	%	Population	%	Population		
18 to 25	4,099	24%	4,063	24%	4,065	24%	4,076	24%
26 to 34	5,649	33%	5,654	33%	5,730	33%	5,678	33%
35 to 39	2,321	14%	2,344	14%	2,395	14%	2,353	14%
40 to 44	1,519	9%	1,525	9%	1,574	9%	1,539	9%
45 & Older	3,292	20%	3,301	20%	3,401	20%	3,331	20%
Total	16,880	100%	16,887	100%	17,165	100%	16,977	100%

MALE	April 2018		May 2018		June 2018		Quarterly Average	Quarterly %
	Age Group	Population	%	Population	%	Population		
18 to 25	3,611	24%	3,569	24%	3,570	24%	3,583	24%
26 to 34	4,855	33%	4,879	33%	4,924	33%	4,886	33%
35 to 39	2,021	14%	2,026	14%	2,093	14%	2,047	14%
40 to 44	1,324	9%	1,328	9%	1,373	9%	1,342	9%
45 & Older	2,893	20%	2,902	20%	2,995	20%	2,930	20%
Total	14,704	100%	14,704	100%	14,955	100%	14,788	100%

FEMALE	April 2018		May 2018		June 2018		Quarterly Average	Quarterly %
	Age Group	Population	%	Population	%	Population		
18 to 25	488	22%	494	23%	495	22%	493	23%
26 to 34	794	37%	775	35%	806	37%	792	36%
35 to 39	300	14%	318	15%	302	14%	307	14%
40 to 44	195	9%	197	9%	201	9%	198	9%
45 & Older	399	18%	399	18%	406	18%	401	18%
Total	2,176	100%	2,183	100%	2,210	100%	2,191	100%

*Statistical data are averages gathered from *Custody Division Daily Briefing Report*.

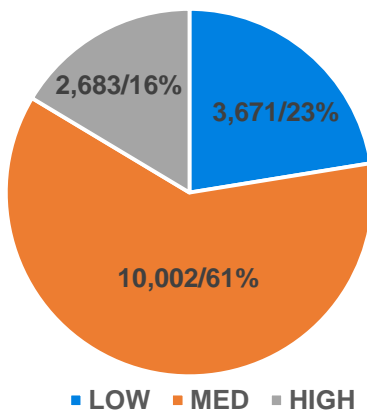
CLASSIFICATION AND RE-CLASSIFICATION

LASD utilizes the Northpointe Classification system to assign security levels to inmates. The security levels guide where an inmate will be housed based on their individual risk for in-custody misconduct. Lower security housing areas offer more programming and privileges to better prepare the inmates for release. Higher security housing is more restricted and therefore limited in what programs are offered, due to potential risk of serious misconduct and/or escape by the high security level inmate population.

*K-10 (Ad-Seg) inmates are re-evaluated for reclassification of security level during the re-class process which occurs every 45 days.
 This chart only includes inmates housed in LASD Type II facilities. Does not include inmates housed in alternative custody beds

*Security Level Housing by Facility				
Month	Low	Medium	High	Total
April	3,747	9,840	2,704	16,291
May	3,672	9,960	2,719	16,351
June	3,593	10,205	2,625	16,423
Average	3,671	10,002	2,683	16,355
Percent	23%	61%	16%	100%

Jail Population by Security Level



The pie graph above depicts the average number of inmates housed this quarter by security level. The percentage is calculated to the Facility ADIP for this quarter (16,355).

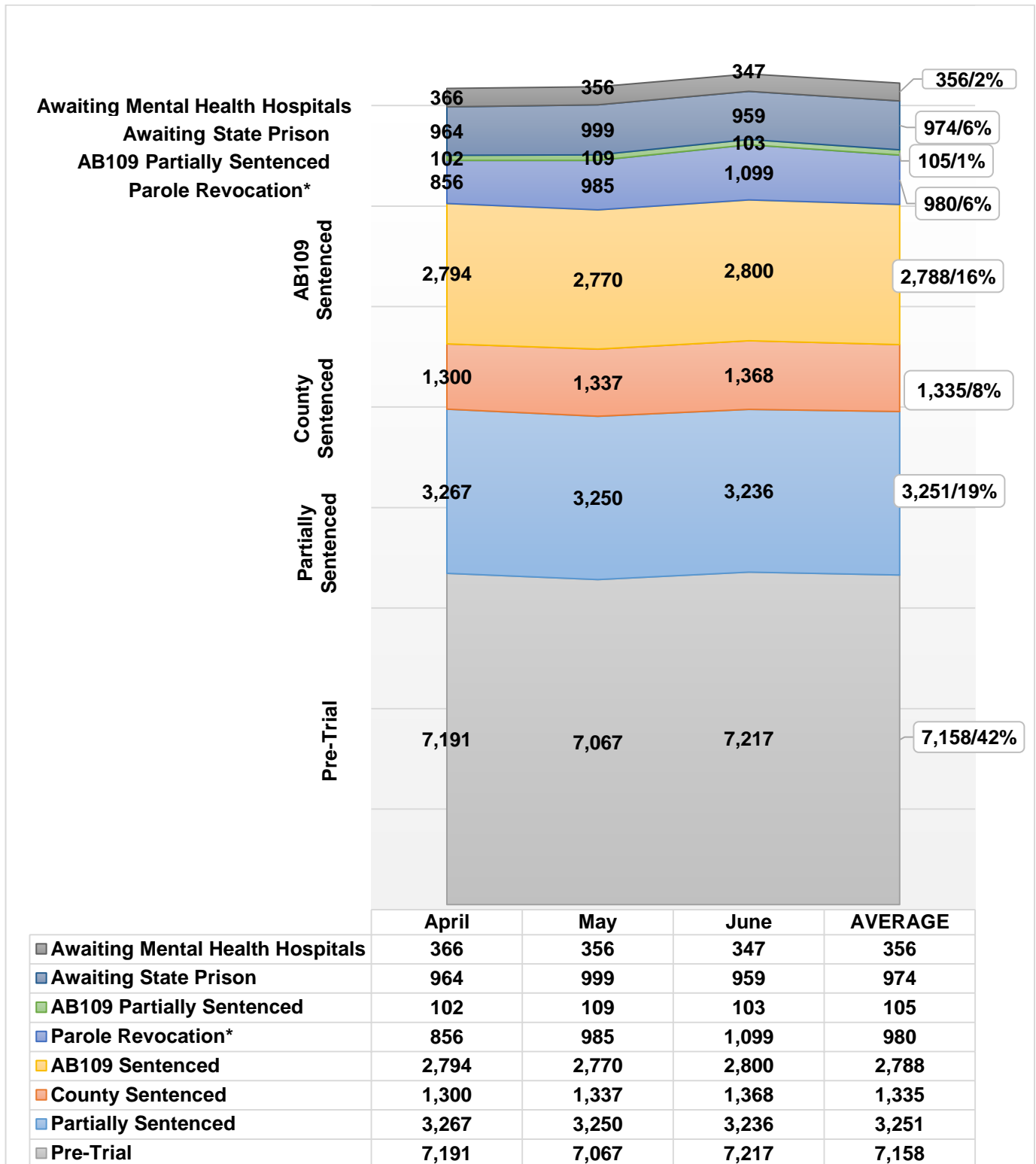
Re-Classification Statistics

Inmates are periodically reclassified (approximately every 45 days) to determine if their security level is still appropriate or should be reduced or increased based upon their conduct.

	ADIP	Disciplinary	Inmate Request	Legal Status	Other	Periodic	Sentence	Staff	TOTALS	% of ADIP
April	16,841	761	1	10	2	5,301	585	30	6,690	40%
May	16,873	701	0	4	2	5,948	708	69	7,432	44%
June	17,130	520	8	16	3	5,559	1,097	89	7,292	43%
Total		1,982	9	30	7	16,808	2,390	188	21,414	
Average		661	3	10	2	5,603	797	63	7,138	

Inmate Population Breakdown

The inmate population consists of various categories of inmates in broad groupings, including: pre-trial, traditional county sentenced, AB 109 sentenced, AB109 sentenced with additional charges, parole/revocation violators, and those awaiting transfer to State Prison.



Parole Revocation includes PRCS Revocation 3455, Flash Incarceration 3454 and Inmates with a 3056 hold.

INMATE POPULATION BREAKDOWN CONTINUED

- **AWAITING STATE PRISON**

- During this quarter, an average of 974 inmates were awaiting transfer to state prison, some while pending trial on other cases.

- **AB109 PAROLE AND PROBATION VIOLATORS**

- An average of 980 AB109 inmates were in custody for violating their parole or probation.

- **AB109 SENTENCED**

- An average of 2,788 inmates were in custody, sentenced under AB109.

- **TRADITIONAL COUNTY SENTENCED INMATE POPULATION**

- The average daily count for the traditional county sentenced (TCS) population was 1,335 approximately 8% of the inmate population.

- **PRE-TRIAL INMATE POPULATION**

- During this quarter, there were approximately 28,825 new bookings into the LA County Jail. Forty-two percent (42%) of the average daily inmate population (16,948) was comprised of inmates who were pre-trial. Pre-trial inmates are those who have an open case and have not been sentenced by the courts.

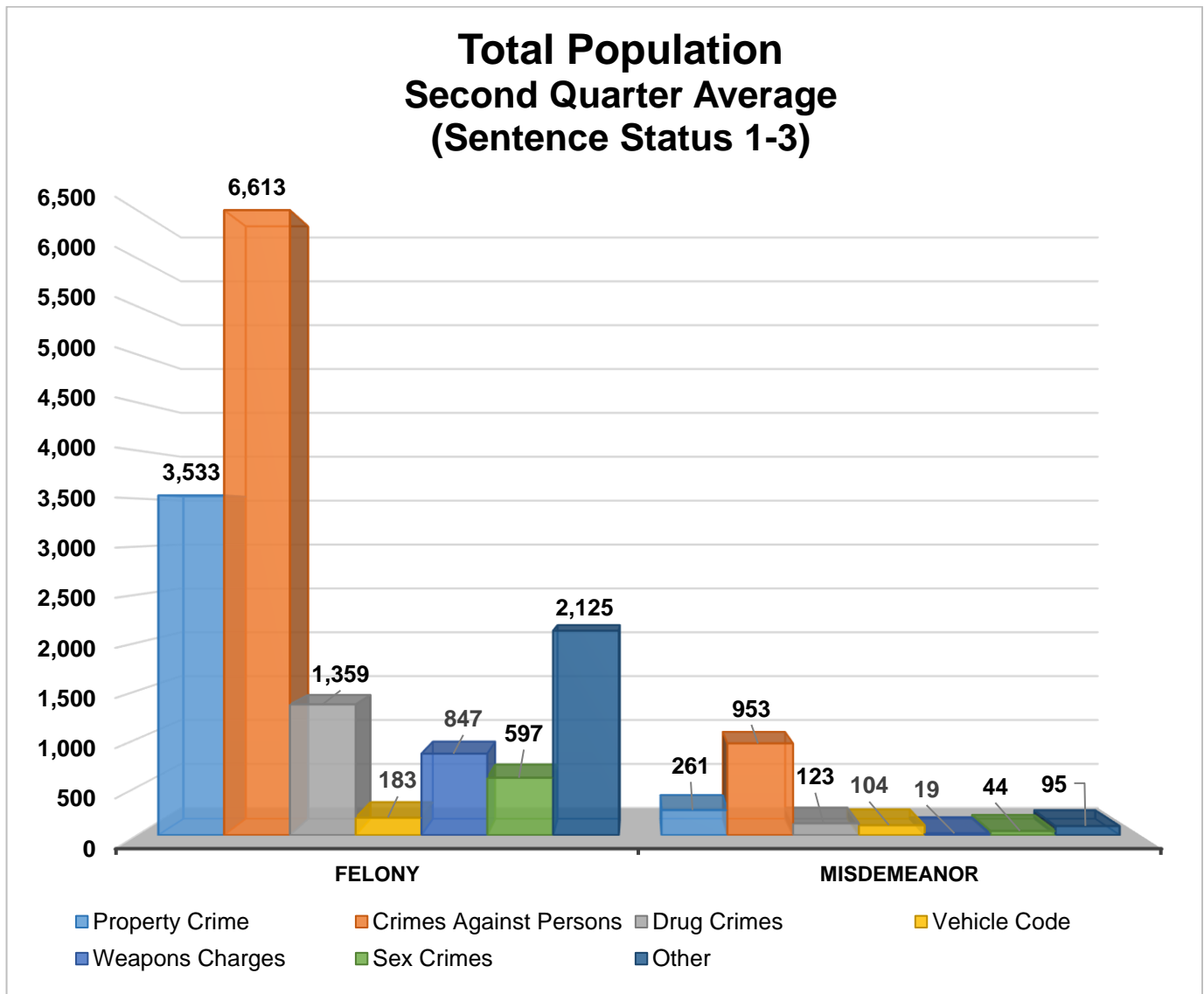
CRIME CLASSIFICATION STATISTICS

The chart below provides an average breakdown for the entire inmate population, both sentenced and un-sentenced, by arrest category.

Population (Sentence Status 1-3)

Arrest Category	Property Crime	Crimes Against Persons	Drug Crimes	Vehicle Code	Weapons Charges	Sex Crimes	Other	Total	Percentage of the Population
Felony	3,533	6,613	1,359	183	847	597	2,125	15,257	91%
Misdemeanor	261	953	123	104	19	44	95	1,599	9%
Total	3,794	7,566	1,482	287	866	641	2,220	16,856	100%

**Information contained is based on a snapshot of the daily inmate population purge every Tuesday.*

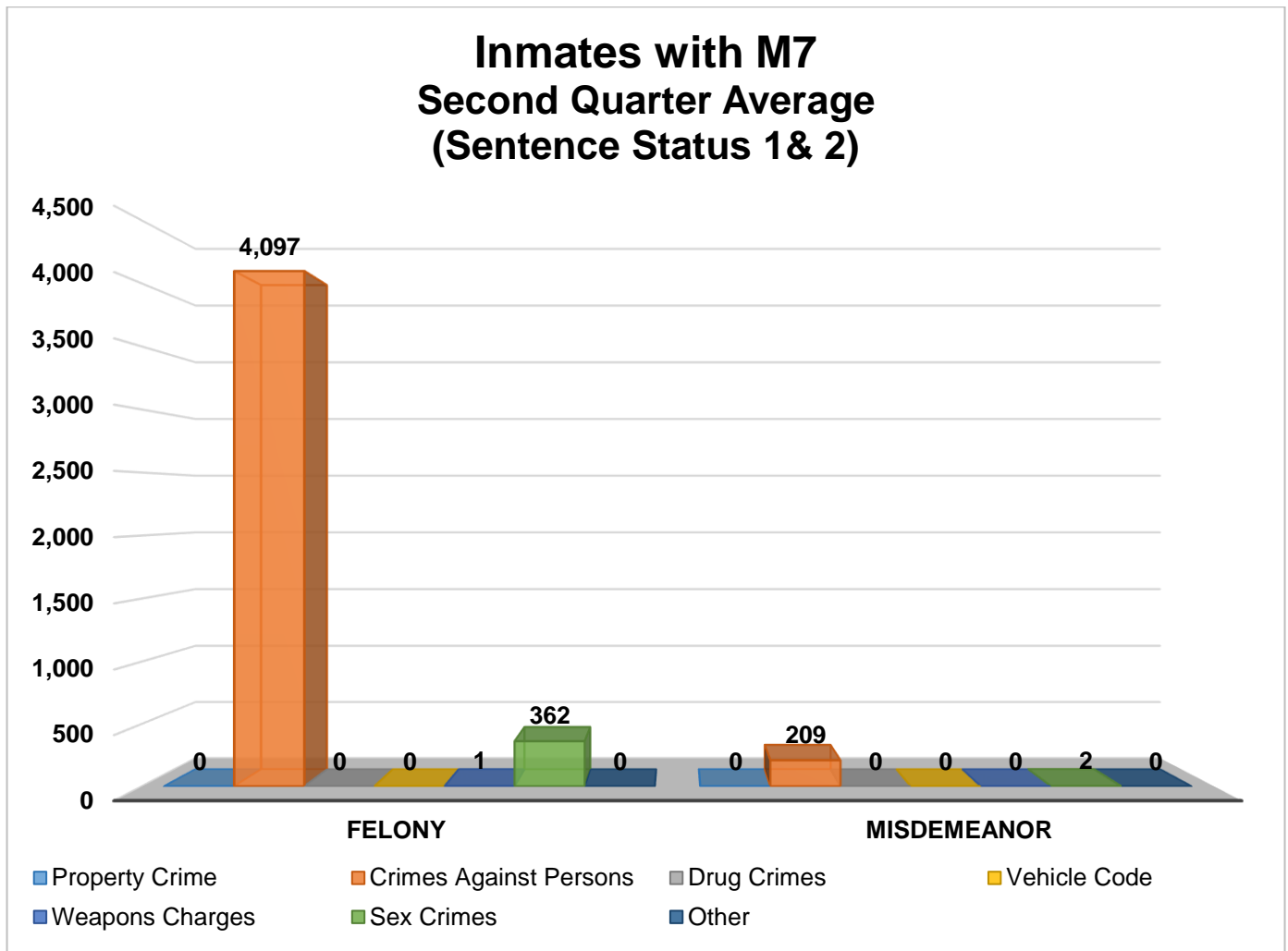


INMATES WITH ASSAULTIVE/VIOLENT CHARGES (M7)

The chart below provides a breakdown for the inmate population with M7 charges, sentence status one and two, by arrest category.

Inmates with Assaultive/Violent Charges (M7) (Sentence Status 1 & 2)

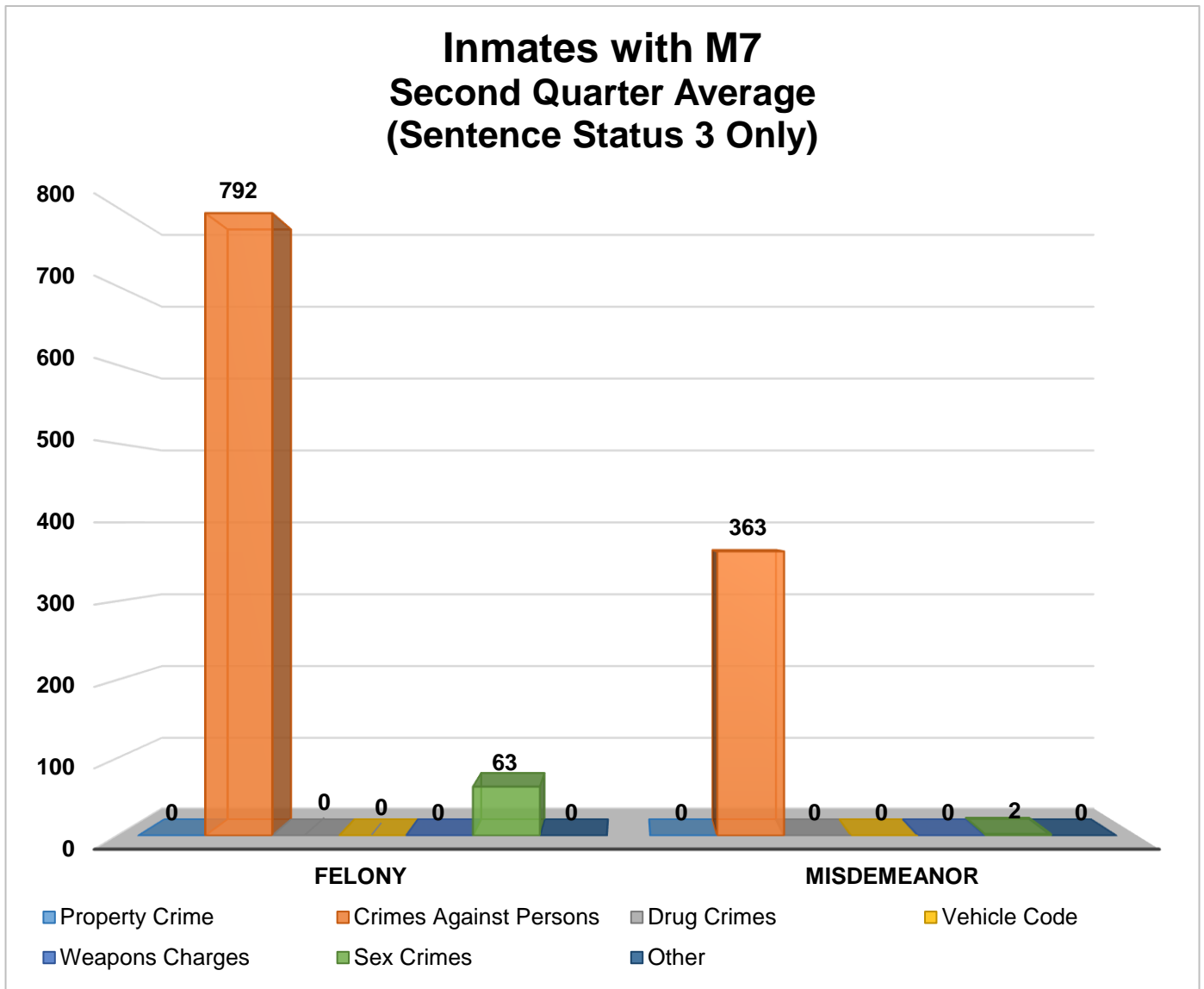
Arrest Category	Property Crime	Crimes Against Persons	Drug Crimes	Vehicle Code	Weapons Charges	Sex Crimes	Other	Total	Percentage of the pre-trial and partially sentenced Population
Felony	0	4,097	0	0	1	362	0	4,460	95%
Misdemeanor	0	209	0	0	0	2	0	211	5%
Total	0	4,306	0	0	1	364	0	4,671	100%



INMATES WITH ASSAULTIVE/VIOLENT CHARGES (M7) CONTINUES

Inmates with Assaultive/Violent Charges (M7) (Sentence Status 3 Only)

Arrest Category	Property Crime	Crimes Against Persons	Drug Crimes	Vehicle Code	Weapons Charges	Sex Crimes	Other	Total	Percentage of the Sentenced Population
Felony	0	792	0	0	0	63	0	855	70%
Misdemeanor	0	363	0	0	0	2	0	365	30%
Total	0	1,155	0	0	0	65	0	1,220	100%

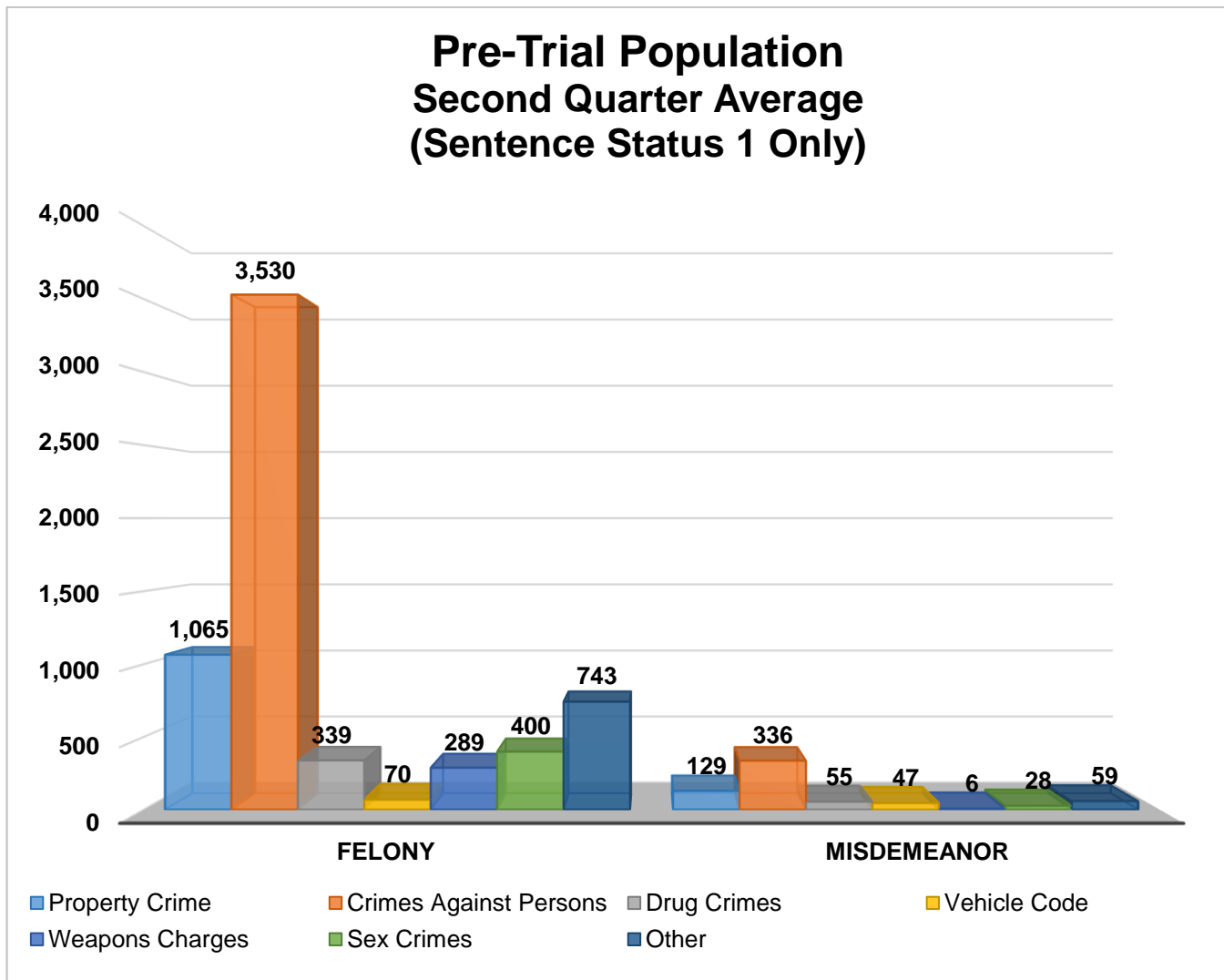


PRE – TRIAL POPULATION

The chart below provides a breakdown for the pre-trial inmate population who are awaiting court disposition.

Pre-trial Population (Sentence Status 1 only)

Arrest Category	Property Crime	Crimes Against Persons	Drug Crimes	Vehicle Code	Weapons Charges	Sex Crimes	Other	Total	Percentage of the pre-trial Population
Felony	1,065	3,530	339	70	289	400	743	6,436	91%
Misdemeanor	129	336	55	47	6	28	59	660	9%
Total	1,194	3,866	394	117	295	428	802	7,096	100%

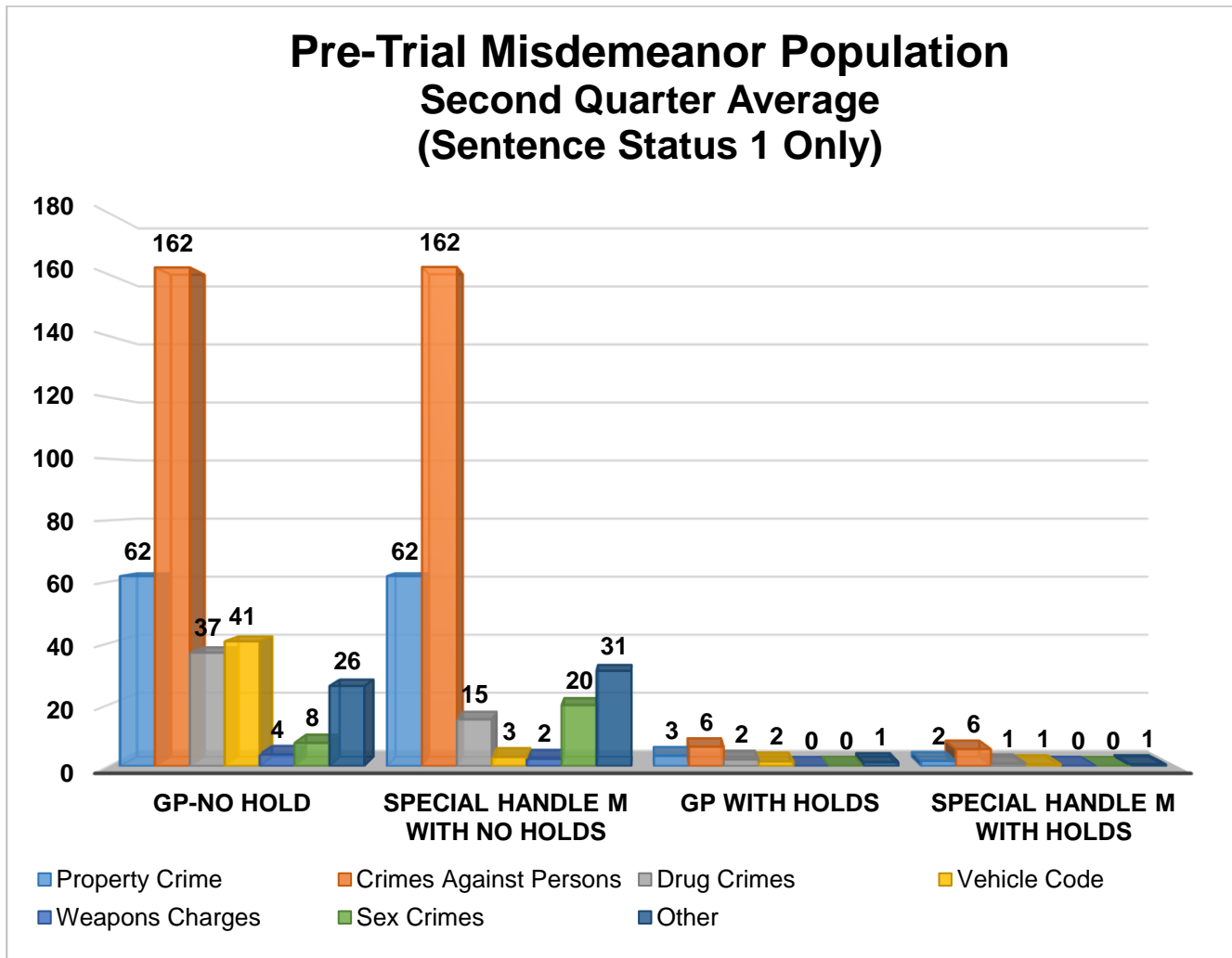


PRE – TRIAL MISDEMEANOR POPULATION

The chart below provides a breakdown for the pre-trial inmate population, incarcerated for a misdemeanor, who have not yet been convicted. “Holds” indicates the inmates are being held on a matter pending from an outside agency.

Pre-trial Misdemeanor Population (Sentence Status 1 only)

Arrest Category	Property Crime	Crimes Against Persons	Drug Crimes	Vehicle Code	Weapons Charges	Sex Crimes	Other	Total	Percentage of the pre-trial Population
GP No Hold	62	162	37	41	4	8	26	340	52%
Special Handle M with No Holds	62	162	15	3	2	20	31	295	45%
GP with Holds	3	6	2	2	0	0	1	14	2%
Special Handle M with Holds	2	6	1	1	0	0	1	11	1%
Total	129	336	55	47	6	28	59	660	100%



PRE-TRIAL BAIL HOLDS

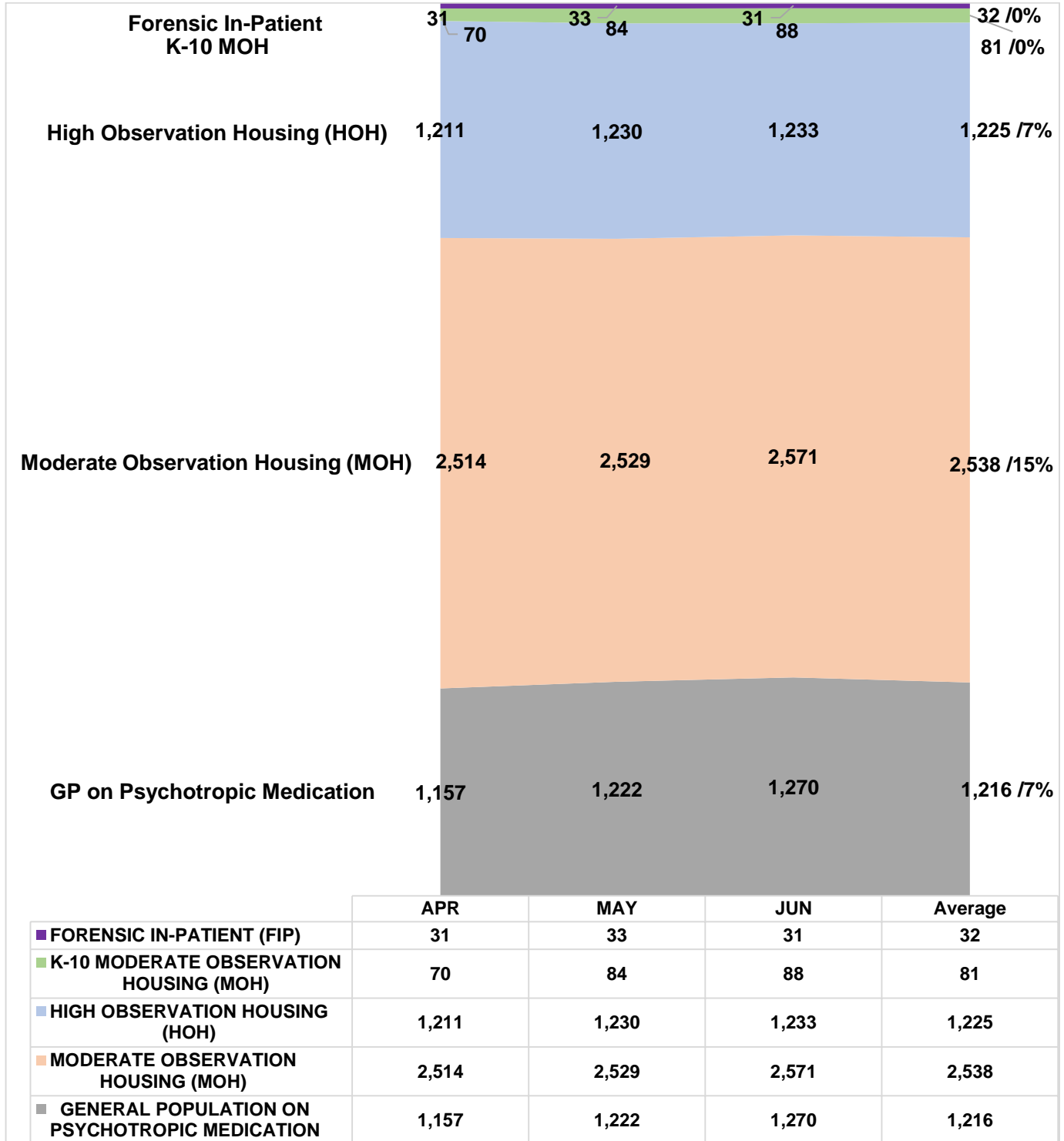
The numbers below represent the average number of inmates in LASD custody eligible for bail with the noted bail amounts.

Sentence Status 1	April			May			June			Quarter 2 Average		
	With Hold	No Hold	Total	With Hold	No Hold	Total	With Hold	No Hold	Total	With Hold	No Hold	Total
\$1 - \$25,000	17	244	261	17	213	230	12	244	256	15	234	249
\$25,001 - \$26,000	4	44	48	3	42	45	4	40	44	4	42	46
\$26,001 - \$50,000	29	586	615	26	583	609	31	591	622	29	587	616
\$50,001 - \$100,000	36	737	773	36	725	761	42	771	813	38	744	782
\$100,001 - \$500,000	68	1,294	1,362	75	1,238	1,313	74	1,216	1,290	72	1,249	1,321
\$500,001 - \$1 Million	69	1,405	1,474	69	1,382	1,451	70	1,389	1,459	69	1,392	1,461
No Bail	411	2,275	2,686	405	2,205	2,610	400	2,243	2,643	405	2,241	2,646
Total	634	6,585	7,219	631	6,388	7,019	633	6,494	7,127	632	6,489	7,121

**This information is derived from a point-in-time snapshot. Limitations with our data systems and limitations in obtaining timely court information may result in inaccuracies.*

MENTAL HEALTH INMATE POPULATION

This quarter the overall inmate population was 16,948; the mental health population accounted for 29 percent of this population. Currently, inmates identified with Mental Health needs requiring specialized housing moderate or high observation housing, account for 22 percent of the overall population. This remaining 7 percent have been treated and continue to receive psychotropic medication while housed in general population.



MISDEMEANOR INCOMPETENT TO STAND TRIAL (MIST)

The Los Angeles County Jail houses inmates who are awaiting trial for misdemeanor charges who have been found to be incompetent to stand trial. This quarter the average number of inmates on MIST is 217.

Misdemeanor Incompetent to Stand Trial (MIST)									
April			May			June			Quarterly Average
Male	Female	Total	Male	Female	Total	Male	Female	Total	
154	68	222	152	62	214	158	57	215	217

AMERICANS WITH DISABILITIES ACT (ADA)

ADA Housing is used to accommodate inmates with mobility limitations and/or physical disabilities. This quarter the average number of inmates requiring ADA is 434 which is slightly higher than last quarter's (430) total.

Americans With Disabilities Act (ADA)				
Housing Area	April	May	June	Quarterly Average
Twin Towers Module 232 & 272	340	355	341	345
MCJ Module 7100 & 7200	91	90	87	89
Monthly Total	431	445	428	434

*** Beginning January, 2018, TTCF added Module 272, and MCJ added Modules 7100 & 7200 for ADA inmates.*

MEDICAL HOUSING

Medical Outpatient/Specialty Housing (MOSH) is provided to inmates who require a level of medical treatment beyond that of stabilized medication distribution (pill call). The MOSH area in MCJ is also used to house inmates with mobility issues.

Additional Medical Housing – Not ADA Designated				
Housing Area	April	May	June	Quarterly Average
Correctional Treatment Center (CTC)	115	115	124	118
Los Angeles County Medical Center (LCMC)	17	21	17	18
*MCJ Medical/Clinic	357	368	366	364
Monthly Total	489	504	507	500

IN-CUSTODY PROGRAMS

LA COUNTY INMATE IN-CUSTODY PROGRAMS

The Los Angeles County Jail offers several in-custody programs. Programs vary from a number of in-custody work assignments, vocational job training, education, and life skill classes, as well as fire camp training and California Department of California Rehabilitative fire camp placement for AB109 inmates. Various programs award sentenced inmates additional time credits for their participation pursuant to the California Penal Code:

CREDIT EARNINGS

Program	Penal Code	Credit Earned	Type of Inmate
Sentenced GT/WT	4019 PC	Day-for-Day (1:1)	All Sentenced Inmates
Conservation	4019.1 PC	One and one half-for One (1.5:1)	All Sentenced Inmates
Fire Camp	4019.2 PC	Two-for-One (2:1)	AB109 Sentenced Inmates
Milestone	4019.4 PC	Up to 6 weeks per year	AB109 Sentenced Inmates

CONSERVATION WORK PROGRAM (CWP)

The Conservation Work Program (CWP) requires inmates to complete their adjusted sentence while working in various job classifications, giving them the skills and work discipline necessary to increase their chances of success once released. Effective January 2015, all sentenced offenders, including Traditional County Sentenced (TCS) inmates are eligible to receive credits pursuant to Penal Code Section 4019.1. For this quarter, approximately 2,430 offenders (14% of the population) participated in CWP.

CONSERVATION WORK PROGRAM (CWP)				
Inmate Type	April	May	June	Quarterly Average
Inmates Participated In Programs	2,194	2,560	2,537	2,430

FIRE CAMP TRAINING PROGRAM

Fire Camp Training and California Institute for Women (CIW/CSCR) training are aligned under the Conservation Work Program (CWP). This program is the first step of training before an inmate may participate in a State facilitated Fire Camp Program. Offenders who are sentenced under AB109 are eligible to receive credits pursuant to Penal Code 4019.1. The average number of inmates enrolled in the Fire Camp training program for this quarter was 62.

FIRE CAMP TRAINING CAMP				
Housing Type	April	May	June	Quarterly Average
PDC Fire Camp Training (Men)	55	52	70	59
CIW Fire Camp Training (Women)	2	2	6	3
Monthly Totals	57	54	76	62

CALIFORNIA DEPARTMENT OF CORRECTIONS AND REHABILITATION (CDCR) **FIRE CAMP PROGRAM**

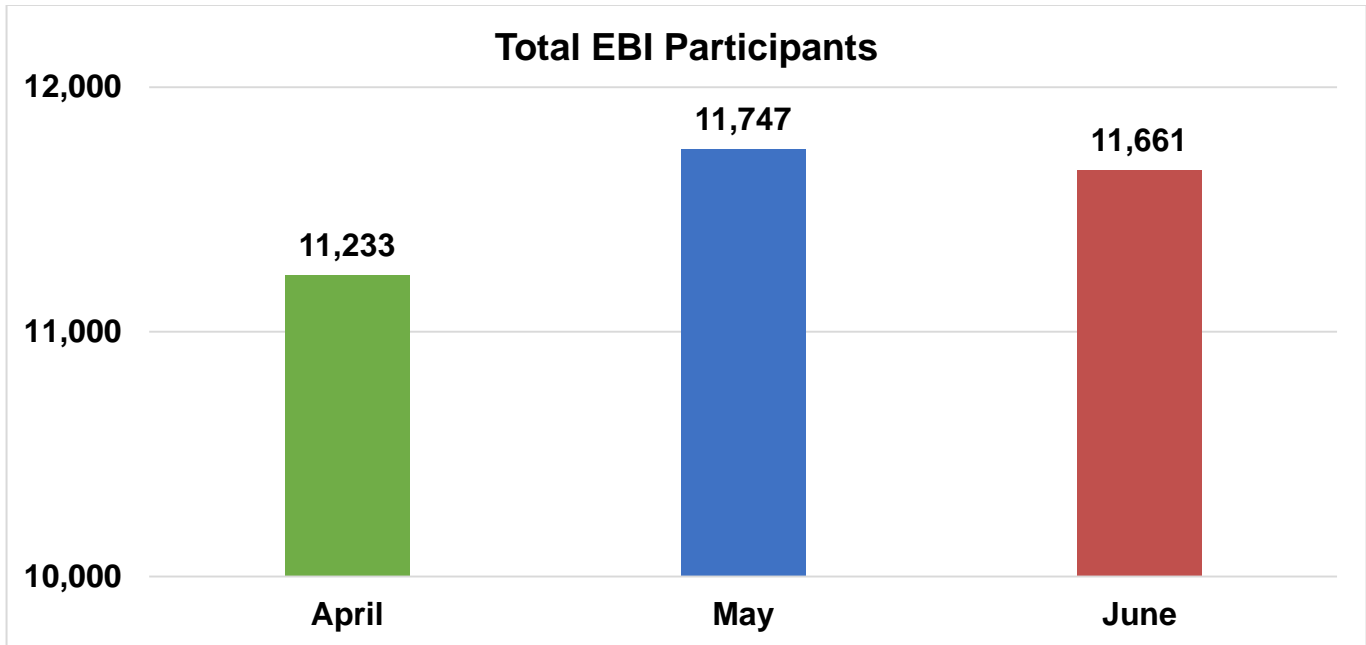
Once an inmate passes all necessary requirements in the Fire Camp Training Program located at PDC East facility, they are transferred to one of five state contracted fire camp sites where they will serve the remainder of their adjusted sentence. Offenders who are sentenced under AB109 are eligible to receive credits pursuant to Penal Code 4019.2. The average number of inmates assigned to CDCR Fire Camps for this quarter was 71.

CDCR FIRE CAMP				
Fire Camp Locations	April	May	June	Quarterly Average
Acton Fire Camp	9	10	9	9
Francisquito Fire Camp	13	11	9	11
Holton Fire Camp	37	41	39	39
Julius Klein Fire Camp	11	11	10	11
Malibu Women's Fire Camp	1	1	1	1
Monthly Totals	71	74	68	71

EDUCATION BASED INCARCERATION PROGRAMS (EBI-MILESTONE)

The Education Based Incarceration Program (EBI) uses traditional and nontraditional education which is designed to reduce incarceration by increasing the educational, civic, social, economic, and life skills of its participants. Offenders who are sentenced are eligible to receive credits pursuant to Penal Code 4019.4. For this quarter, approximately 11,547 (68% of the population) inmates participated in the EBI program.

A total of 969 Milestone credits were awarded this quarter.



Education Based Incarceration Program (EBI)				
Inmate Type	April	May	June	Quarterly Average
*Inmates Participated in EBI	11,233	11,747	11,661	11,547
*Sub Population of EBI Participants				
EBI Participant Type	April	May	June	Quarterly Average
GP on Psych Meds	1,149	1,293	1,260	1,234
Mentally Ill (M)	3,259	3,439	3,370	3,356
^Pre-Trial Non – AB109	3,024	3,871	5,048	3,981
Post Trial Non – AB109	6,151	5,824	4,700	5,558
^Pre-Trial – AB109	38	45	55	46
Post Trial – AB109	1,973	1,967	1,808	1,916
^Unsentenced Status 1 and 2	47	40	50	46

**Data derived from ATAR system, sub-population numbers will differ from monthly total due to duplicate classifications.*

^NON-CREDIT EARNING CATEGORIES OF PARTICIPANTS IN EBI (IN EBI DORM WORKING YET NOT EARNING CREDIT DUE TO SENTENCE STATUS)

BACK ON TRACK PROGRAM

The Back on Track (BOT) program began in February 2015 and is overseen by EBI staff. The program delivers education and comprehensive reentry services to offenders before and after a participant is released from jail. The program focuses on the critical time following an inmate's release from jail, by providing the seamless reentry services vital for success, including employment and life skill services. This program is available to inmates who have been sentenced under AB109 and are eligible to receive Milestone credits. They must be enrolled in the program for 18 months—divided into 9 months in-custody and 9 months out-of-custody.

Back On Track	April	May	June	Quarterly Average
South Barrack	49	46	48	48

In-Custody S.T.A.R.T

The jail based START treatment services began at CRDF in February 2016 providing substance use disorder (SUD) treatment services to 50 women on any given day. In May of 2017, the program expanded to treat up to 90 women. In May 2017 services began at MCJ for up to 90 gay and transgender inmates and at PDC South facility treating up to 200 men in general population on any given day. In March 2018, services commenced at TTCF to treat up to 90 men with co-occurring mental health and SUD. Treatment services include screening, clinical assessment, group and individual counseling, case management services, medication assisted treatment, re-entry planning and care coordination with CTU and transportation to community based services post release.

In-Custody S.T.A.R.T (CRDF)	April	May	June	Quarterly Average
Enrolled	97	77	96	90
Completed	34	34	49	39

In-Custody S.T.A.R.T (MCJ)	April	May	June	Quarterly Average
Enrolled	62	70	67	66
Completed	15	20	13	16

In-Custody S.T.A.R.T (PDC)	April	May	June	Quarterly Average
Enrolled	236	241	229	235
Completed	28	24	33	28

In-Custody S.T.A.R.T (TTCF)	April	May	June	Quarterly Average
Enrolled	62	64	44	57
Completed	0	12	14	9

**Services at TTCF began in March 2018.*

ALTERNATIVES TO CUSTODY PROGRAMS

ALTERNATIVES TO CUSTODY PROGRAMS

The Community Transition Unit (CTU), the Community Based Alternatives to Custody Unit (CBAC), and the Compliance Team work together by utilizing a variety of alternatives to custody programming options in an effort to enhance an inmate's chance of success upon release. These programs are conducted in collaboration with local agencies including Community and Faith Based Organizations, Department of Mental Health (DMH), Department of Public Health (DPH), and other organizations. It is the Department's goal to program inmates from intake through re-entry into the community. With this approach, we hope to increase public safety and reduce the rate of recidivism.

Supported by release planning overseen by the CTU, and in partnership with contracted services, inmates are provided re-entry assistance through linkages to services that are initiated while they are in-custody and continue upon release. Through the Alternatives to Custody (ATC) programs, qualifying inmates are afforded the opportunity to complete the remaining portion of their sentence in a community treatment program. Inmates who do not qualify for ATC due to security or other reasons are referred to community providers for re-entry assistance.

The ATC programs include:

Substance Treatment and Reentry Transition (S.T.A.R.T)

The Substance Treatment and Re-entry Transition (START) program is a Department Public Health, Substance Abuse Prevention Control (SAPC) funded program that places eligible male and female inmates into residential substance use disorder (SUD) treatment programs on electronic GPS monitoring as an alternative to custody (ATC) program.

Community Grant Beds

The Community Grant beds are funded through community grants. They work directly with various residential programs approved by LASD, but not affiliated with the START program, and they offer treatment beds for inmates under the ATC program. Several programs cater to specific clientele who fit a specified demographic in regards to age and gender.

Veteran's Administration (VA)

The Veteran's Administration (VA) funds SUD residential treatment, under the ATC program for inmates who are confirmed to be a veteran entitled to VA Benefits. The treatment programs are approved by the VA and are vetted by LASD.

Transitional Case Management Program (TCM)

The Transitional Case Management Program (TCM) is a Department of Public Health (DPH) funded program, whereby DPH funded program, whereby DPH employees refer HIV infected inmates to a residential SUD treatment facility, approved and vetted by LASD, under the ATC program.

TARZANA TREATMENT CENTER DMH/SUD PROGRAM

Tarzana Treatment Center, in partnership with LASD, DHS Correctional Health, and the Department of Mental Health, has made available 40 total beds for inmates with a co-occurring mild to moderate mental health diagnosis, and a substance use disorder (SUD). These residential SUD beds are for female. Inmates are identified by DHS Jail Linkage staff and referred to Tarzana treatment for assessment and acceptance. Inmates must still qualify for ATC programming through a validated risk assessment and criminal history review.

MENTAL HEALTH DIVERSION – NORMANDIE VILLAGE/GATEWAY

Normandie Village treats eligible male N3 inmates with mental illness who are a low security risk, and in a stabilized condition. They are selected to complete the remaining 60-180 days of their sentence in a 42 bed community-based IMD Step-down facility.

For acceptance into program, inmates must volunteer to participate in services and meet the following criteria:

1. Be 18-54 years of age
2. Must have a primary Axis I major psychiatric diagnosis
3. May have a secondary Axis I diagnosis of substance abuse
4. Must not be a registered sex offender
5. Must not have a fire setting history
6. Must be ambulatory
7. Must not have a serious or life-threatening medical problem
8. Must not require treatment in a locked setting
9. Must have applied for SSI

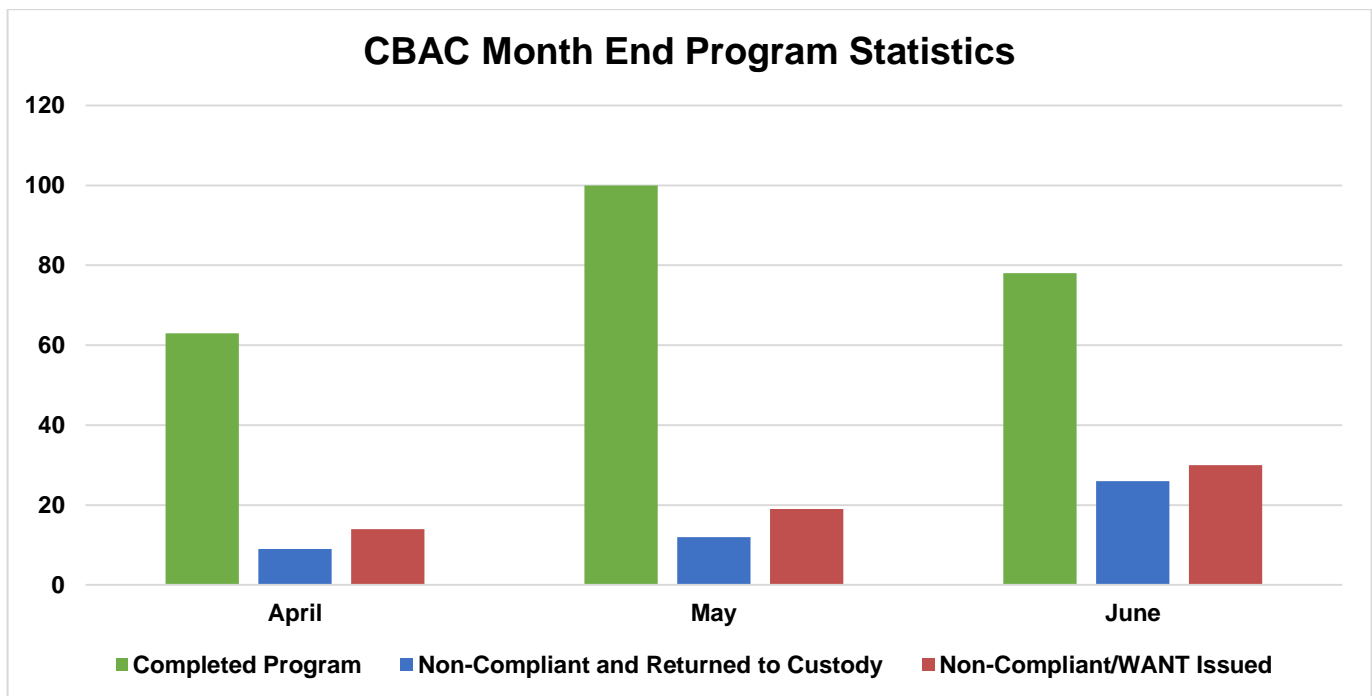
Program Quarterly Statistics	Enrolled	Completed	Returned to Custody	Absconded
START	27	38	5	0
Community Grant Beds	2	3	1	0
Veterans	0	1	0	0
Transitional Case Management	0	1	0	0
Tarzana TC DMH/SUD	0	0	0	0
Normandie Village DMH	2	3	0	0

COMMUNITY BASED ALTERNATIVES TO CUSTODY (CBAC)

The PMB's CBAC unit identifies low risk sentenced offenders within the jail population who qualify to finish their remaining sentence in and out-of-custody alternative environment. Although these individuals are outside of traditional custody, they are still under the jurisdiction of the Department.

CBAC Monthly Placement									
Program	April			May			June		
	M	F	Total	M	F	Total	M	F	Total
Electronic Monitoring Program	38	8	46	34	9	43	27	1	28
Weekender Work Program	33	2	35	28	0	28	19	1	20
Work Release Program	41	10	51	41	6	47	39	6	45
Monthly Totals	112	20	132	103	15	118	85	8	93

The graph below depicts the total number of offenders who successfully completed the remainder of their sentence on a CBAC program. It also shows the number of offenders who failed to complete the program and with the efforts of the PMB Compliance Unit, were returned back to finish their sentence and those who failed to complete the program and were not returned back to custody.



RE - ENTRY ASSISTANCE

AFFORDABLE CARE ACT (ACA)

Medi-Cal application assistance is offered to inmates at each jail facility and those inmates on the Work Release Program (WRP), home EMP, community treatment ATC and station workers. The following chart represents enrollment statistics for the second quarter of 2018:

	April	May	June	Totals	Average	Prev. Quarter Totals	% Difference
Direct inmate contact/In-Reach	751	665	602	2,018	673	2,265	-11%
Applications cleared by DPSS	271	238	116	625	208	829	-25%
Applications in queue	95	82	88	265	88	618	-57%
Applications approved by DPSS	226	186	116	528	176	713	-26%
Benefits received	226	186	116	528	176	713	-26%
Benefits denied	45	44	28	117	39	155	-25%

COMMUNITY RE-ENTRY AND RESOURCE CENTER (CRR)

The information below are recently released inmates and inquiries and/or contacts made by members of the general public who have been assisted with services at the CRR for the second quarter of 2018.

Inquiry Demographic Population	April	May	June	Total	Average
General Release	353	359	306	1,018	339
General Public	123	117	93	333	111
Alternative to Custody Program	2	3	3	8	3
Coordinated Release	18	43	31	92	31
Work Release	8	13	4	25	8
Phone Referral	1	0	0	1	0
Monthly Totals:	505	535	437	1,477	492

Inquiry Demographic Gender	April	May	June	Total	Average
Male	449	471	389	1309	436
Female	102	91	67	260	87
Monthly Totals:	551	562	456	1569	523

CTU personnel visit the Inmate Reception Center release area to educate and remind inmates waiting to go home about services available at the CRR. Walks of the release area are performed every 90 minutes.

	April	May	June	Total	Average
Number of 90 Minute Contact Walks	73	87	67	227	76
Number of Inmates Contacted	1,256	1,350	1,097	3,703	1,234
Number of Flyers Distributed	1,206	1,302	706	3,214	1,071

CTU COORDINATED RELEASES TO VARIOUS PROGRAMS

The final 90 days leading to an inmate’s release from custody are the most critical in ensuring a successful transition from Custody to Community Based Organization (CBO) Treatment Centers. During the time leading up to their release, inmates are interviewed several times by the CBO Staff and members of the Community Transition Unit to ensure that they are matched up with a suitable treatment provider.

The coordinated release process helps to create a trust between law enforcement, inmate participants, and CBO’s. The CTU’s ultimate goal is to provide a successful recovery and re-entry into the community and to ultimately decrease recidivism.

	April	May	June	Total	Average
Coordinated Release	127	141	144	412	137

CTU VITAL RECORDS

Through the Vital Records Program, LASD staff members have been deputized by the County Registrar-Recorder to facilitate birth certificate applications for inmates born in Los Angeles County, who have requested a certified copy. The fee of \$28 for certified copies of birth certificates is funded by the Inmate Welfare Fund.

All inmates in custody are eligible to apply for a California ID Card. The issued ID’s are provided to the inmates upon their release. The inmates must still report to the DMV to obtain a driver license following their release.

Records Processed	April	May	June	Quarterly Total	Average
DMV - California Identification Card	337	116	344	797	266
RECORDS – Birth Certificate	399	465	460	1324	441
Totals	736	581	804	2,121	707

Records Issued	April	May	June	Quarterly Total	Average
DMV - California Identification Card	162	329	178	669	223
RECORDS – Birth Certificate	329	379	240	948	316
Totals	491	708	418	1,617	539