



CUSTODY DIVISION POPULATION QUARTERLY REPORT

January - March 2023

Los Angeles County Sheriff's Department

Robert G. Luna, Sheriff

TABLE OF CONTENTS

Executive Summary.....	3
1. Population Trends.....	4
Los Angeles County Inmate Population Graph	
Monthly Average Daily Inmate Population (ADIP) Trend	
Arrests, Bookings, and Releases	
Release Practices	
Homeless and Veteran	
2. Facilities Overview.....	10
Rated Capacities - Board of State and Community Corrections (BSCC)	
Jail Housing Facilities	
Men's Central Jail (MCJ)	
Twin Towers Correctional Facility (TTCF)	
Century Regional Detention Facility (CRDF)	
Pitchess Detention Center (PDC) – East	
Pitchess Detention Center (PDC) – North	
Pitchess Detention Center (PDC) – South	
North County Correctional Facility (NCCF)	
3. Population Overview.....	17
Inmate Population Demographics	
Inmate Population Offender Age Groups	
Jail Population by Security Level	
Inmate Population Breakdown	
Crime Classification Statistics	
Inmates with M7 (Assaultive Charges)	
No Cases Adjudicated	
No Cases Adjudicated Misdemeanor Population	
Mental Health Inmate Population	
Misdemeanor Incompetent to Stand Trial (MIST)	
Americans with Disabilities Act (ADA)	
Medical Housing	
4. In-Custody Programs.....	30
Credit Earnings	
Conservation Work Program (CWP)	
Education Based Incarceration Program (EBI-Milestone)	
Fire Camp Training Program	
California Department of Corrections and Rehabilitation (CDCR) Fire Camp Program	
In-Custody Substance Treatment and Reentry Transition (START) Program	

5. Alternatives to Custody (ATC) Programs.....	34
Community Transition Unit (CTU)	
Substance Treatment and Reentry Transition (START)	
Female Programs	
Veteran's Administration (VA)	
Community Based Alternatives to Custody (CBAC)	
Los Angeles County ATC Inmate Population Graph	
6. Re-Entry Assistance.....	38
Community Re-Entry and Resource Center (CRRC)	
CTU Coordinated Releases to Various Programs	
CTU Vital Records	

EXECUTIVE SUMMARY

The Los Angeles County Sheriff's Department (Department) is committed to maintaining a secure and constitutional jail system. As part of this effort, a periodic report is essential to better understand and quantify population trends. This ***Custody Division Population Quarterly Report*** summarizes data collected during the first quarter of 2023 and is produced by the Population Management Bureau (PMB) Analysis Unit.

The Average Daily Inmate Population (ADIP) in the Los Angeles County (County) jail system during the first quarter of 2023 was 14,253. This is higher than the first quarter of 2022 average of 13,235.

To manage the inmate population, the Department continued to use percentage release. The short sentence releases have remained at 240 days since July 24, 2022. Inmates serving traditional county sentences completed 10 percent of their court ordered sentences. Inmates serving sentences for felony serious and/or violent offenses (M7 charges) served 100 percent of their sentences, minus any time credits earned. Inmates sentenced under 1170 PC (AB109) served 100 percent of their sentences, minus any time credits earned.

Since March 2020, the Department implemented various measures to reduce the jail's inmate population in an effort to mitigate the spread of the COVID-19 virus among those incarcerated and staff. With the safety of the communities in mind and with an emphasis on those inmates that were medically vulnerable, the Department worked in a collaborative process with the District Attorney, Public Defender, Alternate Public Defender, Superior Court and Office of Diversion and Reentry, to reduce the overall inmate population.

The Traditional County Sentenced (TCS) population this quarter was approximately 812, lower than last quarter's total of 868. The number of inmates sentenced under 1170 PC was approximately 1,061, which is slightly lower than last quarter's total of 1,075.

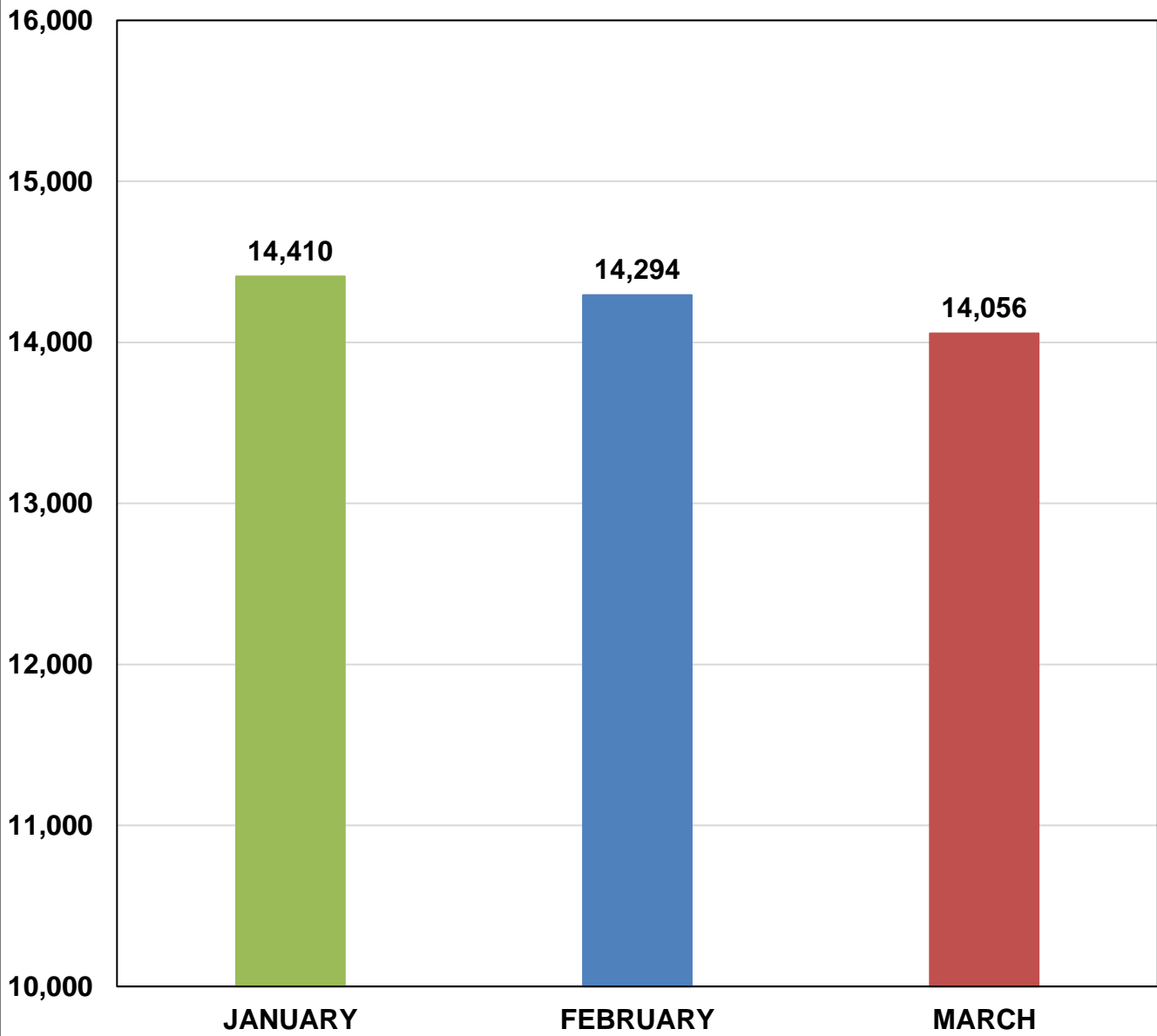
The mental health population decreased from 5,819 last quarter to 5,671 this quarter and comprised 40 percent of the total inmate population. During the first quarter of 2022, the mental health population was 5,667 and comprised 43 percent of the total inmate population.

Information encompassed in this report/document depicts data related to a specific date and time. Data may differ based on numerous factors related to an inmate's status, disposition, facility, etc. Information may differ based on systems queried, archived information, date/time parameters or numerous other factors. Information in disparate reports should not be combined as data sets may be inconsistent in queries and responses.

POPULATION TRENDS

LASD INMATE POPULATION

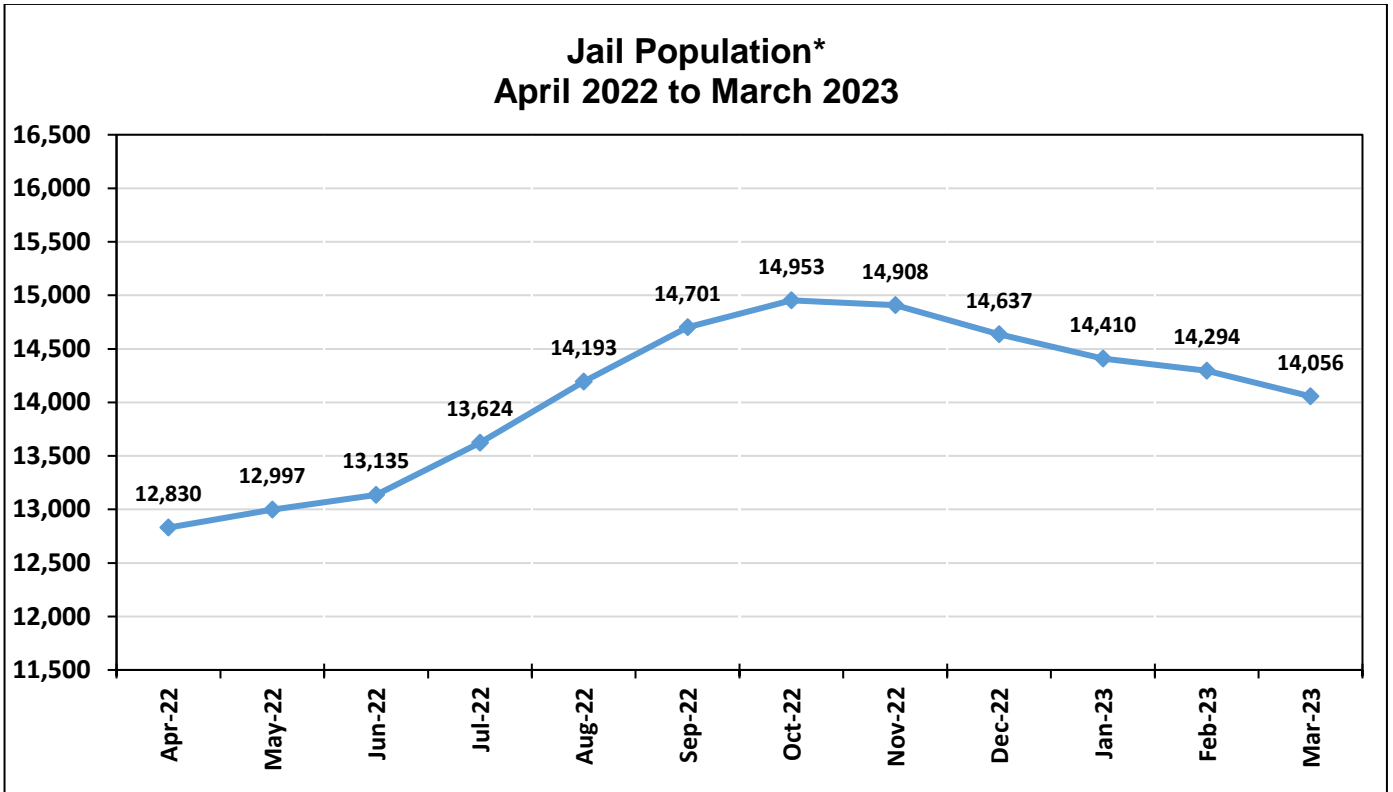
**First Quarter 2023
Los Angeles County Overall Inmate Count**



2023 Quarterly Overall Division Average Daily Inmate Population (ADIP) *
14,253

**Quarterly Division ADIP reflects all inmates processed into IRC, excludes ATC.*

MONTHLY ADIP TREND



Yearly ADIP Comparison

Year	ADIP	Notes
2011	15,014	(October - AB109 enacted)
2012	18,043	
2013	18,687	
2014	18,681	(November - Prop 47)
2015	17,049	
2016	16,613	
2017	17,024	
2018	16,910	
2019	17,070	
2020	14,212	(March - COVID-19)
2021	14,577	
2022	13,807	(June – Zero Bail ended)
2023	14,253	Data collected through March 2023

*Excludes Alternatives to Custody

FIRST QUARTER 2023 - ARREST AND BOOKING STATS

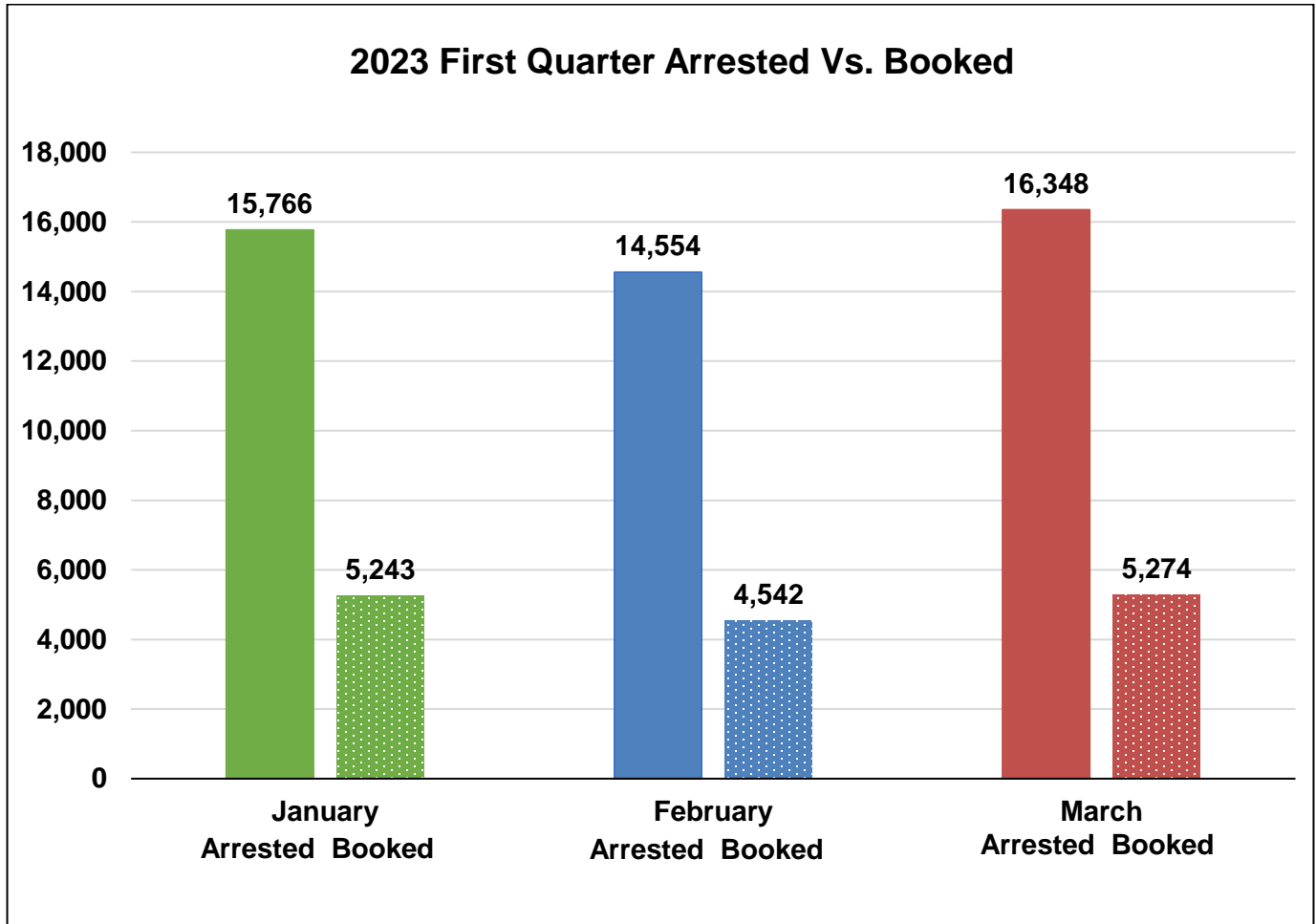
Arrest activity decreased 2% to 46,668 versus last quarter (47,386). The number of inmates booked into the County jail this quarter increased 1% to 15,059 versus last quarter (14,886).

	January		February		March		Quarterly Total	Quarterly Average	Quarterly %
	Monthly Total	%	Monthly Total	%	Monthly Total	%			
Felony	7,784	50%	7,236	50%	8,143	50%	23,163	7,721	50%
Misdemeanor	7,914	50%	7,243	50%	8,122	50%	23,279	7,760	50%
Other*	68	0%	75	0%	83	0%	226	75	0%
Total Arrested	15,766		14,554		16,348		46,668	15,556	100%
Total Booked into LA County	5,243	33%	4,542	31%	5,274	32%	15,059	5,020	32%

*Other includes child welfare, delinquent, infraction, and non-specific charges.

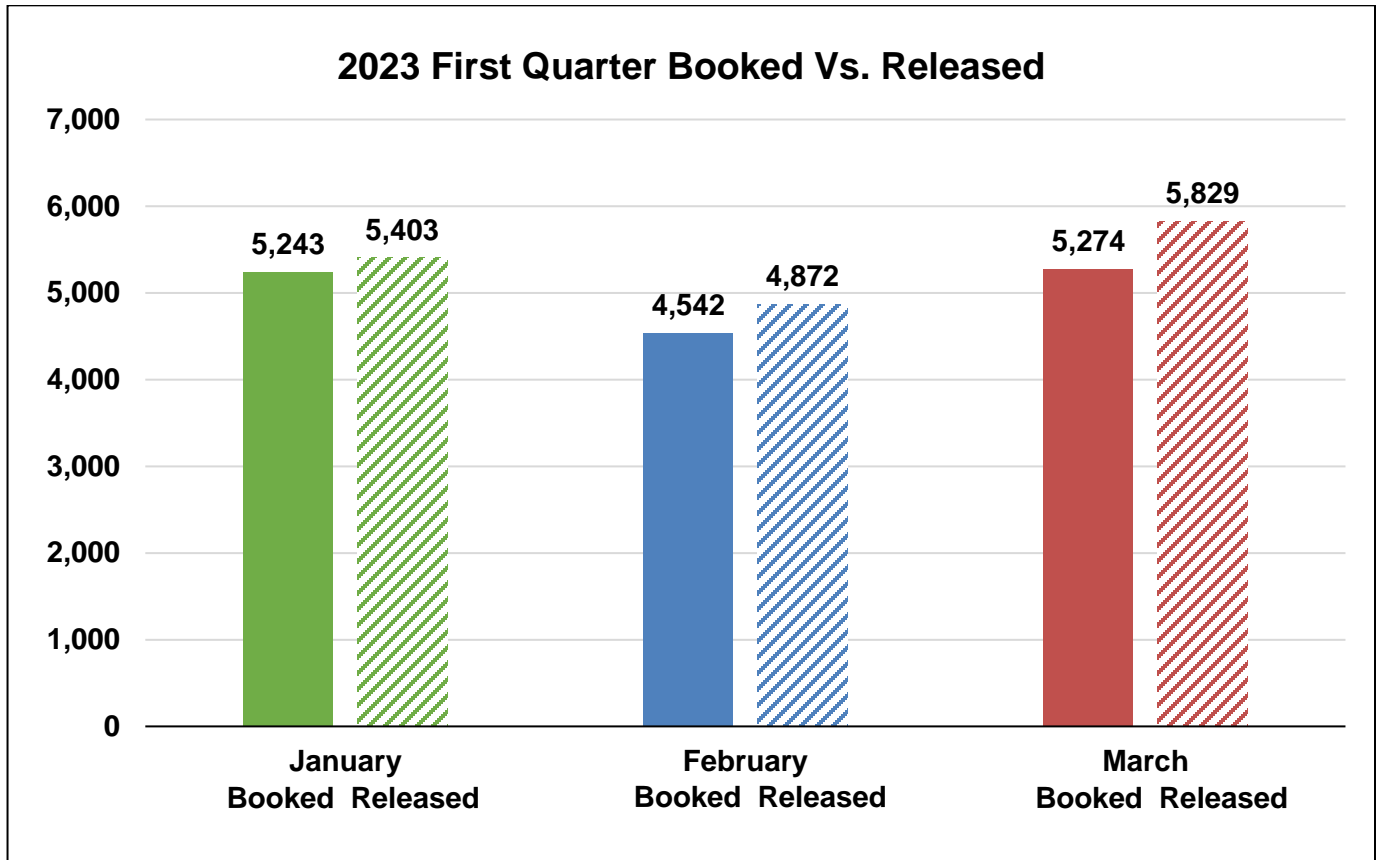
FIRST QUARTER 2023 - ARRESTS VS. BOOKINGS

The graph below compares the total arrests and bookings for this quarter.



FIRST QUARTER 2023 – BOOKINGS VS. RELEASES

The Department averaged approximately 5,368 releases this quarter. This is a 2% increase compared to last quarter's average of 5,286 releases.



COUNTY JAIL RELEASE PRACTICES

Due to conditions of overcrowding, traditional county sentenced inmates were subject to early release under the following conditions. In an effort to mitigate the spread of COVID-19, additional release measures were used. The M7 charges were modified, and additional releases were made in collaboration with other county agencies. Bookings were affected by bail changes and COVID-19. CDCR continued to accept state prisoners.

Month	Release Criteria		M7 Release Criteria ¹		Short Sentence ²	
	Male	Female	Felony	Misdemeanor	Male	Female
January	10%	10%	100%	100%	240 days	240 days
February	10%	10%	100%	100%	240 days	240 days
March	10%	10%	100%	100%	240 days	240 days

¹ Inmates classified as M7 have sentences for designated serious and/or violent offenses or have notoriety in the community, which requires their record jacket to go through extra security checks upon release from LASD's custody.

² Shorts are inmates sentenced to a term in county jail, which after all legal credits are awarded and the current jail percentage time is considered, are immediately released from LASD's custody after processing from court.

HOMELESS

The chart below provides an average breakdown of the homeless inmate population who stated they were homeless by gender, major race, and age category. The homeless inmates comprised 26% of the total population.¹

	January	February	March	Average
Male	3,244	3,247	3,148	3,213
Female	557	569	559	562
Total	3,801	3,816	3,707	3,775

	January	February	March	Average
Hispanic	1,994	2,002	1,950	1,982
Black	1,091	1,093	1,053	1,079
White	591	596	583	590
Other	125	125	121	124
Total	3,801	3,816	3,707	3,775

	January	February	March	Average
18 to 25	535	531	503	523
26 to 34	1,448	1,486	1,443	1,459
35 to 39	615	611	597	608
40 to 44	491	497	499	496
45 & Older	712	691	665	689
Total	3,801	3,816	3,707	3,775

¹ Homeless data is collected from COMPAS based on a snapshot of the inmate population collected each business day. These are numbers based upon self-identification and have not been confirmed.

VETERAN

The chart below provides an average breakdown of the veteran inmate population who stated they have served in the United States Military by gender, major race, and age category. The veteran inmates comprised 2% of the total population.²

	January	February	March	Average
Male	274	275	262	270
Female	7	7	6	7
Total	281	282	268	277

	January	February	March	Average
Hispanic	92	91	86	90
Black	93	88	84	88
White	81	88	82	84
Other	15	15	16	15
Total	281	282	268	277

	January	February	March	Average
18 to 25	12	12	13	12
26 to 34	60	57	52	56
35 to 39	44	46	42	44
40 to 44	54	50	45	50
45 & Older	111	117	116	115
Total	281	282	268	277

² Veteran data is collected from COMPAS based on a snapshot of the inmate population collected each business day. These are numbers based upon self-identification and have not been confirmed by the Veterans Administration.

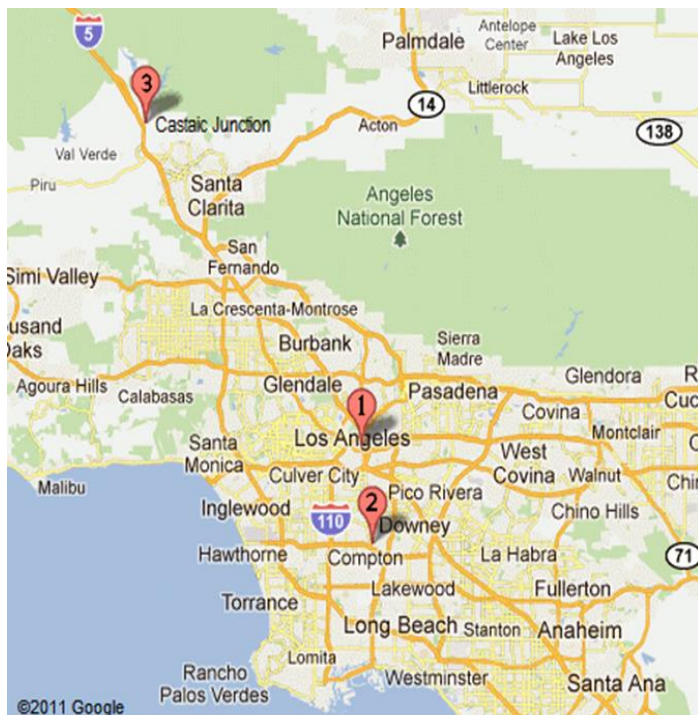
FACILITIES OVERVIEW

RATED CAPACITY

The Board of State and Community Corrections (BSCC) is a government body which recommends capacity limits for county jails. The BSCC conducts biennial jail inspections; the Department was rated in July 2020. The BSCC does not rate processing, medical and discipline beds.

Board of State and Community Corrections				
LASD Custody Facilities	BSCC Rated Capacity	Quarterly Facility ADIP	Above BSCC Rated Capacity	% Over BSCC Capacity
Men's Central Jail	3,512	3,588	76	2%
Men's Central Jail Outpatient Clinic	Unrated	392	-	-
Twin Towers Correctional Facility	2,432	2,402	-30	-1%
Correctional Treatment Center	Unrated	122	-	-
Century Regional Detention Facility	1,708	1,445	-263	-15%
CRDF Reception Center	Unrated	2	-	-
Pitchess Detention Center – East	926	48	-878	-95%
Pitchess Detention Center – North	830	1,232	402	48%
Pitchess Detention Center – South	782	1,111	329	42%
North County Correctional Facility	2,214	3,618	1,404	63%
Inmate Reception Center	Unrated	266	-	-
LCMC Jail Wards	Unrated	28	-	-
Total BSCC Rated Capacity*	Rated Quarterly Facility ADIP	Total Above BSCC Rated Capacity	Total % Over BSCC Capacity	Total % Over BSCC Capacity Excluding East Facility
12,404	13,444	1,040	8%	17%

*Statistical data gathered from *Board of State and Community Corrections Inspection Report 07/2020*



LA County Jail Facilities	
1	<ul style="list-style-type: none"> ➤ Men's Central Jail (MCJ) ➤ Twin Towers Correctional Facility (TCF) ➤ Los Angeles County Medical Center (LCMC) ➤ Correctional Treatment Center (CTC) ➤ Inmate Reception Center (IRC)
2	<ul style="list-style-type: none"> ➤ Century Regional Detention Facility (CRDF)
3	<ul style="list-style-type: none"> ➤ Pitchess Detention Center (PDC) ➤ PDC East Facility ➤ PDC North Facility ➤ PDC South Facility ➤ North County Correctional Facility (NCCF)

JAIL HOUSING FACILITIES

MEN'S CENTRAL JAIL TOTAL INMATE POPULATION 2023					
Security Level	January	February	March	Quarterly Average	% of Population
Security Level Low 1-4	224	209	219	217	5%
Security Level Medium 5-7	2,323	2,275	2,271	2,290	58%
Security Level High 8-9	1,507	1,440	1,426	1,458	37%
Facility Total	4,054	3,924	3,916	3,965	100%
SUBPOPULATION HOUSED THROUGHOUT FACILITY¹					
Housing Type	January	February	March	Quarterly Average	
Administratively Segregated (K-10) ²	49	49	54	51	
Restrictive Housing (K-17, K-18, K-19, K-20) ³	272	278	268	273	
Americans with Disabilities Act (ADA)	216	207	198	207	
Discipline	42	38	41	40	
General Population on Psychotropic Meds	536	521	484	514	
Inmate Workers	283	366	399	349	
LGBT (K-6G)	333	314	307	318	
Medical/Clinic	400	394	377	390	
Other (K-6T/B) ⁴	278	285	261	275	
Pro-Per	69	71	67	69	
EBI / START	175	180	178	178	
Mentally Ill – Moderate Observation / Service Area (MOH)	921	893	915	910	
Sex Crimes Against Children (K-6Y)	274	256	251	260	
Developmentally Disabled	8	12	13	11	

¹ Subpopulation housed throughout facility includes those who are classified with special housing needs and are included in the total inmate population. An inmate may belong to more than one subpopulation.

² K-10 Administratively segregated for various reasons including danger to self or others.

³ K-17 Disruptive; K-18 Protective Custody; K-19 Major Disruptive; K-20 Highly Dangerous.

⁴ K-6T Contempt of court, K-6B threatened by others.

* Statistical data are averages gathered from Facility Count Sheet every Tuesday.

TWIN TOWERS CORRECTIONAL FACILITY TOTAL INMATE POPULATION 2023					
Security Level	January	February	March	Quarterly Average	% of Population
Security Level Low 1-4	202	169	162	178	7%
Security Level Medium 5-7	1,832	1,892	1,871	1,865	73%
Security Level High 8-9	527	519	498	515	20%
Facility Total	2,561	2,580	2,531	2,558	100%
SUBPOPULATION HOUSED THROUGHOUT FACILITY¹					
Housing Type	January	February	March	Quarterly Average	
Administratively Segregated (K-10) ²	85	100	107	97	
Restrictive Housing (K-17, K-18, K-19, K-20) ³	119	125	138	127	
Administratively Segregated (K-1) ⁴	6	5	4	5	
Administratively Segregated (K-6B) ⁵	147	146	139	144	
Americans With Disabilities (ADA)	176	179	188	181	
Discipline	15	14	13	14	
Female Medical (CTC)	14	13	16	14	
General Population on Psychotropic Meds Security Level 1-4	12	10	9	10	
General Population on Psychotropic Meds Security Level 5-7	181	178	168	176	
General Population on Psychotropic Meds Security Level 8-9	48	52	52	51	
LGBT (K-6G)	49	46	38	44	
Education Based Incarceration (EBI)	234	225	249	236	
Medical (CTC)	106	111	106	108	
Mentally Ill – High Observation Housing (HOH)	1,258	1,259	1,217	1,245	
Mentally Ill – Moderate Observation / Service Area (MOH)	2,695	2,714	2,745	2,718	
Mentally Ill – Moderate Observation Housing (MOH) Sex Crimes Against Children (K-6Y)	63	65	63	64	

¹ Subpopulation housed throughout facility includes those who are classified with special housing needs and are included in the total inmate population. An inmate may belong to more than one subpopulation.

² K-10: Administratively segregated for various reasons including danger to self or others.

³ K-17: Disruptive; K-18: Protective Custody; K-19: Major Disruptive; K-20: Highly Dangerous.

⁴ K-1 Law Enforcement relation in custody.

⁵ K-6B: Administratively segregated are at risk of assault in GP housing.

* Statistical data are averages gathered from Facility Count Sheet every Tuesday.

CUSTODY DIVISION POPULATION QUARTERLY REPORT FIRST QUARTER 2023

**CENTURY REGIONAL DETENTION FACILITY
TOTAL INMATE POPULATION
2023**

Security Level	January	February	March	Quarterly Average	% of Population
Security Level Low 1-4	210	200	203	204	14%
Security Level Medium 5-7	978	975	947	967	66%
Security Level High 8-9	279	291	317	296	20%
Facility Total	1,467	1,466	1,467	1,467	100%

SUBPOPULATION HOUSED THROUGHOUT FACILITY¹

Housing Type	January	February	March	Quarterly Average
Administratively Segregated (K-10) ²	28	24	17	23
Restrictive Housing (K-17, K-18, K-19, K-20) ³	28	35	36	33
Americans With Disabilities Act (ADA)	21	23	25	23
K-8 Pregnant, Post-partum, Miscarriage or Terminated Pregnancy	23	19	24	22
Discipline	11	12	15	13
Inmate Workers	116	132	139	129
Medical/Clinic	3	3	3	3
Mentally III – High Observation Housing (HOH)	399	387	396	394
Mentally III – Moderate Observation Housing / Service Area (MOH)	357	351	335	348
Administratively Segregated (K-6B) ⁴	9	10	9	9
Education Based Incarceration (EBI)	64	75	81	73
Sex Crimes Against Children (K-6Y)	6	5	4	5

¹ Subpopulation housed throughout facility includes those who are classified with special housing needs and are included in the total inmate population. An inmate may belong to more than one subpopulation.

² K-10-Administratively segregated for various reasons including danger to self or others.

³ K-17: Disruptive; K-18: Protective Custody; K-19: Major Disruptive; K-20: Highly Dangerous.

⁴ K-6B: Administratively segregated are at risk of assault in GP housing.

* Statistical data are averages gathered from Facility Count Sheet every Tuesday.

PITCHESS DETENTION CENTER – EAST FACILITY (FIRE CAMP) TOTAL INMATE POPULATION 2023					
Security Level	January	February	March	Quarterly Average	% of Population
Security Level Low 1-4	8	12	25	15	28%
Security Level Medium 5-7	25	27	62	38	72%
Security Level High 8-9	0	0	0	0	0%
Facility Total	33	39	87	53	100%

* Statistical data are averages gathered from Facility Count Sheet every Tuesday.

PITCHESS DETENTION CENTER – NORTH TOTAL INMATE POPULATION 2023					
Security Level	January	February	March	Quarterly Average	% of Population
Security Level Low 1-4	46	41	55	47	4%
Security Level Medium 5-7	987	988	969	981	80%
Security Level High 8-9	206	192	213	204	16%
Facility Total	1,239	1,221	1,237	1,232	100%
SUBPOPULATION HOUSED THROUGHOUT FACILITY¹					
HOUSING TYPE	January	February	March	Quarterly Average	
Discipline	9	12	12	11	
Education Based Incarceration (EBI) K-6Y	94	92	88	91	
Sex Crimes Against Children (K-6Y)	383	372	359	371	
Mentally Ill - Moderate Observation Housing (MOH)	624	613	745	661	

¹ Subpopulation housed throughout facility includes those who are classified with special housing needs and are included in the total inmate population. An inmate may belong to more than one subpopulation.

* Statistical data are averages gathered from Facility Count Sheet every Tuesday.

**PITCHESS DETENTION CENTER - SOUTH
TOTAL INMATE POPULATION
2023**

Security Level	January	February	March	Quarterly Average	% of Population
Security Level Low 1-4	86	135	128	116	11%
Security Level Medium 5-7	1,057	1,079	799	978	89%
Security Level High 8-9	0	0	0	0	0%
Facility Total	1,143	1,214	927	1,094	100%

SUBPOPULATION HOUSED THROUGHOUT FACILITY¹

Housing Type	January	February	March	Quarterly Average
Programs	179	192	144	172
Inmate Workers	180	140	126	149

¹ Subpopulation housed throughout facility includes those who are classified with special housing needs and are included in the total inmate population. An inmate may belong to more than one subpopulation.

* Statistical data are averages gathered from Facility Count Sheet every Tuesday.

**NORTH COUNTY CORRECTIONAL FACILITY
TOTAL INMATE POPULATION
2023**

Security Level	January	February	March	Quarterly Average	% of Population
Security Level Low 1-4	213	160	141	171	5%
Security Level Medium 5-7	2,046	2,108	2,253	2,136	59%
Security Level High 8-9	1,380	1,309	1,254	1,314	36%
Facility Total	3,639	3,577	3,648	3,621	100%

SUBPOPULATION HOUSED THROUGHOUT FACILITY¹

Housing Type	January	February	March	Quarterly Average
Restrictive Housing (K-17, K-18, K-19, K-20) ²	20	20	21	20
Administratively Segregated (K6-B)	174	169	179	174
Discipline	57	85	66	69
Inmate Workers	511	473	513	499
Education Based Incarceration (EBI)	65	57	28	50
Veterans	29	15	60	35

¹ Subpopulation housed throughout facility includes those who are classified with special housing needs and are included in the total inmate population. An inmate may belong to more than one subpopulation.

² K-17: Disruptive; K-18: Protective Custody; K-19: Major Disruptive; K-20: Highly Dangerous.

* Statistical data are averages gathered from Facility Count Sheet every Tuesday.

POPULATION OVERVIEW

INMATE POPULATION DEMOGRAPHICS

Racial demographics this quarter indicate the three most populous racial groups within the County jail for both male and female offenders are Hispanic (55%), Black (29%), and White (13%).

Combined	January 2023	
	Race	Population
Hispanic	7,843	55%
Black	4,169	29%
White	1,833	13%
All Others	457	3%
Chinese	40	0%
Filipino	26	0%
Pacific Islanders	12	0%
Japanese	4	0%
American Indian	12	0%
Total	14,396	100%

February 2023		
Race	Population	%
Hispanic	7,758	55%
Black	4,156	29%
White	1,788	13%
All Others	437	3%
Chinese	43	0%
Filipino	25	0%
Pacific Islanders	13	0%
Japanese	5	0%
American Indian	11	0%
Total	14,236	100%

March 2023		
Race	Population	%
Hispanic	7,688	55%
Black	4,078	29%
White	1,791	13%
All Others	415	3%
Chinese	45	0%
Filipino	24	0%
Pacific Islanders	13	0%
Japanese	4	0%
American Indian	9	0%
Total	14,067	100%

Quarterly Average	Quarterly %
7,760	55%
4,135	29%
1,804	13%
437	3%
43	0%
25	0%
13	0%
5	0%
11	0%
14,233	100%

Male	January 2023	
	Race	Population
Hispanic	7,162	56%
Black	3,723	29%
White	1,550	12%
All Others	403	3%
Chinese	36	0%
Filipino	26	0%
Pacific Islanders	10	0%
Japanese	4	0%
American Indian	11	0%
Total	12,925	100%

February 2023		
Race	Population	%
Hispanic	7,086	56%
Black	3,712	29%
White	1,495	12%
All Others	388	3%
Chinese	39	0%
Filipino	24	0%
Pacific Islanders	11	0%
Japanese	4	0%
American Indian	10	0%
Total	12,769	100%

March 2023		
Race	Population	%
Hispanic	7,019	56%
Black	3,622	29%
White	1,505	12%
All Others	357	3%
Chinese	41	0%
Filipino	22	0%
Pacific Islanders	12	0%
Japanese	3	0%
American Indian	9	0%
Total	12,590	100%

Quarterly Average	Quarterly %
7,087	56%
3,686	29%
1,517	12%
383	3%
39	0%
24	0%
11	0%
4	0%
10	0%
12,761	100%

Female	January 2023	
	Race	Population
Hispanic	681	47%
Black	446	30%
White	283	19%
All Others	54	4%
Chinese	4	0%
Filipino	0	0%
Pacific Islanders	2	0%
Japanese	0	0%
American Indian	1	0%
Total	1,471	100%

February 2023		
Race	Population	%
Hispanic	672	46%
Black	444	30%
White	293	20%
All Others	49	4%
Chinese	4	0%
Filipino	1	0%
Pacific Islanders	2	0%
Japanese	1	0%
American Indian	1	0%
Total	1,467	100%

March 2023		
Race	Population	%
Hispanic	669	46%
Black	456	31%
White	286	19%
All Others	58	4%
Chinese	4	0%
Filipino	2	0%
Pacific Islanders	1	0%
Japanese	1	0%
American Indian	0	0%
Total	1,477	100%

Quarterly Average	Quarterly %
673	46%
449	31%
287	19%
54	4%
4	0%
1	0%
2	0%
1	0%
1	0%
1,472	100%

*Statistical data are averages gathered from Custody Division Daily Briefing Report every Tuesday.

INMATE POPULATION OFFENDER AGE GROUPS

The 26-34 year old cohort was the most frequently represented age group within the jail population this quarter, followed by the 45 & older.

Combined	January 2023		February 2023		March 2023		Quarterly Average	Quarterly %
Age Group	Population	%	Population	%	Population	%		
18 to 25	2,301	16%	2,315	16%	2,277	16%	2,298	16%
26 to 34	5,361	37%	5,273	37%	5,164	37%	5,266	37%
35 to 39	2,239	15%	2,238	16%	2,222	16%	2,233	16%
40 to 44	1,713	12%	1,702	12%	1,710	12%	1,708	12%
45 & Older	2,782	20%	2,708	19%	2,694	19%	2,728	19%
Total	14,396	100%	14,236	100%	14,067	100%	14,233	100%

Male	January 2023		February 2023		March 2023		Quarterly Average	Quarterly %
Age Group	Population	%	Population	%	Population	%		
18 to 25	2,086	16%	2,099	16%	2,066	16%	2,082	16%
26 to 34	4,745	37%	4,668	37%	4,554	36%	4,656	36%
35 to 39	2,002	15%	1,989	16%	1,960	16%	1,984	16%
40 to 44	1,541	12%	1,526	12%	1,534	12%	1,534	12%
45 & Older	2,551	20%	2,487	19%	2,476	20%	2,505	20%
Total	12,925	100%	12,769	100%	12,590	100%	12,761	100%

Female	January 2023		February 2023		March 2023		Quarterly Average	Quarterly %
Age Group	Population	%	Population	%	Population	%		
18 to 25	215	15%	216	15%	211	14%	215	15%
26 to 34	616	42%	605	41%	610	41%	610	41%
35 to 39	237	16%	249	17%	262	18%	249	17%
40 to 44	172	11%	176	12%	176	12%	175	12%
45 & Older	231	16%	221	15%	218	15%	223	15%
Total	1,471	100%	1,467	100%	1,477	100%	1,472	100%

*Statistical data are averages gathered from Custody Division Daily Briefing Report every Tuesday.

JAIL POPULATION BY SECURITY LEVEL

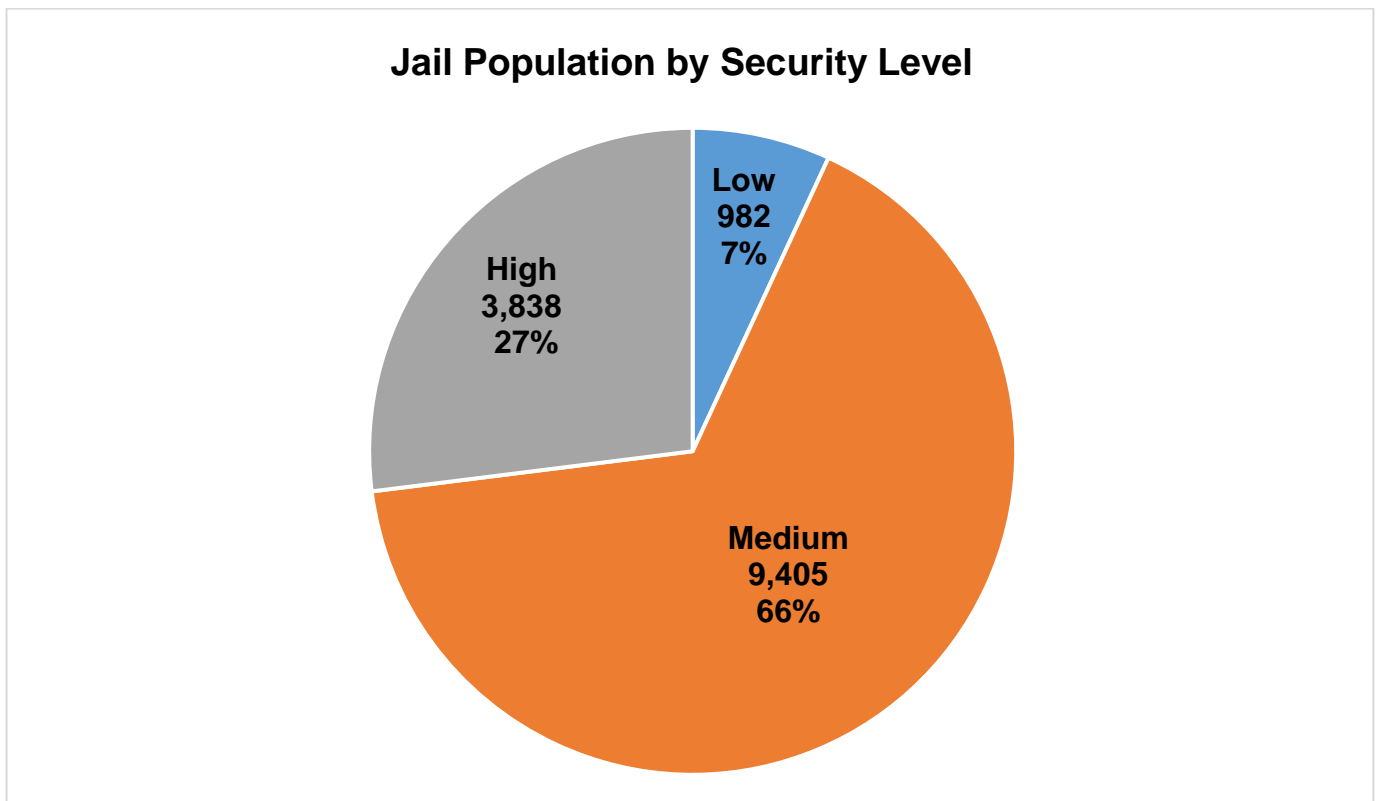
The Department utilizes the Northpointe Classification system to assign security levels to inmates. The security levels guide where an inmate will be housed based on their individual risk for in-custody misconduct. Lower security housing areas offer more programming and privileges to better prepare the inmates for release. Higher security housing is more restricted and therefore limited in what programs are offered, due to potential risk of serious misconduct and/or escape. All inmates are re-evaluated for reclassification of security level every 45 days.

Jail Population by Security Level				
Month	Low	Medium	High	Total
January	1,023	9,419	3,953	14,395
February	953	9,472	3,803	14,228
March	969	9,325	3,759	14,053
Average	982	9,405	3,838	14,225
Percent	7%	66%	27%	100%

**This chart only includes inmates housed in LASD Type II facilities, does not include inmates housed in alternative custody beds.*

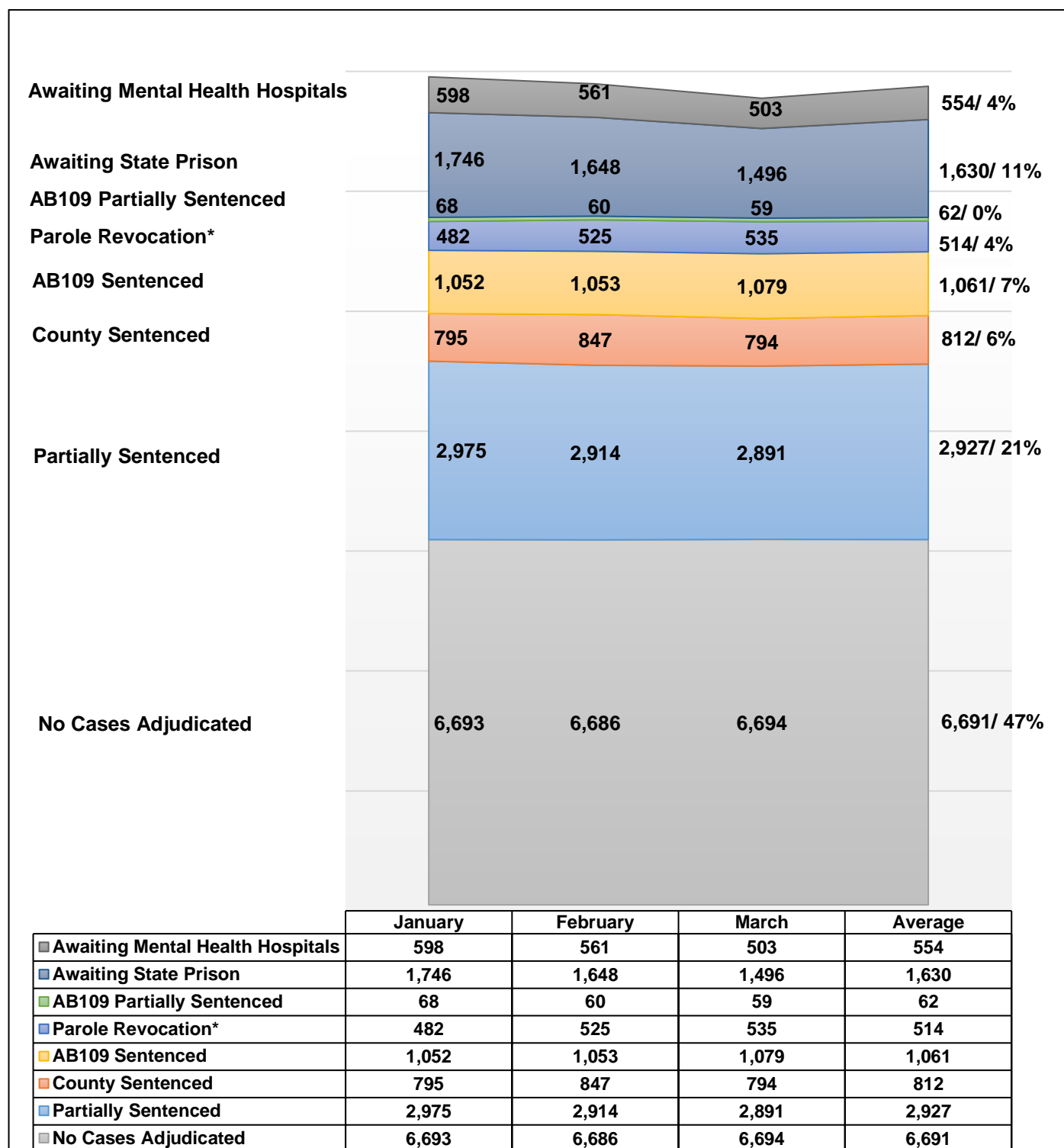
***Information contained is based on a snapshot of the daily inmate population purged every Tuesday.*

The pie graph below depicts the average number of inmates housed this quarter by security level. The percentage is calculated to the Facility ADIP for this quarter (14,225).



INMATE POPULATION BREAKDOWN

The inmate population consists of various categories of inmates in broad groupings, including: no cases adjudicated, traditional county sentenced, AB109 sentenced, AB109 sentenced with additional charges, parole/revocation violators, and those awaiting transfer to state prison.



*Parole Revocation includes PRCS Revocation 3455, Flash Incarceration 3454 and Inmates with a 3056 hold.

**This report is a general overview of the inmate population. As it does not include all subgroups of the inmate population, it is not intended to be relied upon as a definitive representation of the entire inmate population.

INMATE POPULATION BREAKDOWN CONTINUED

- **AWAITING STATE PRISON**

During this quarter, an average of 1,630 inmates were awaiting transfer to state prison, some while pending trial on other cases.

- **AB109 PAROLE AND PROBATION VIOLATORS**

An average of 514 AB109 inmates were in custody for violating their parole or probation.

- **AB109 SENTENCED**

An average of 1,061 inmates were in custody, sentenced under AB109.

- **TRADITIONAL COUNTY SENTENCED INMATE POPULATION**

The average daily count for the TCS population was 812, approximately six percent (6%) of the inmate population.

- **NO CASES ADJUDICATED**

During this quarter, there were approximately 15,059 new bookings into County jail. Forty-seven percent (47%) of the average daily inmate population (14,253) was comprised of inmates who did not have their cases adjudicated. These include inmates who have an open case and have not been sentenced by the courts, along with court returnees. Court returnees are inmates returning from state prisons or state hospitals to either face new charges, re-litigate past crimes, follow up on competency reports or for civil matters (witness, child custody, etc.).

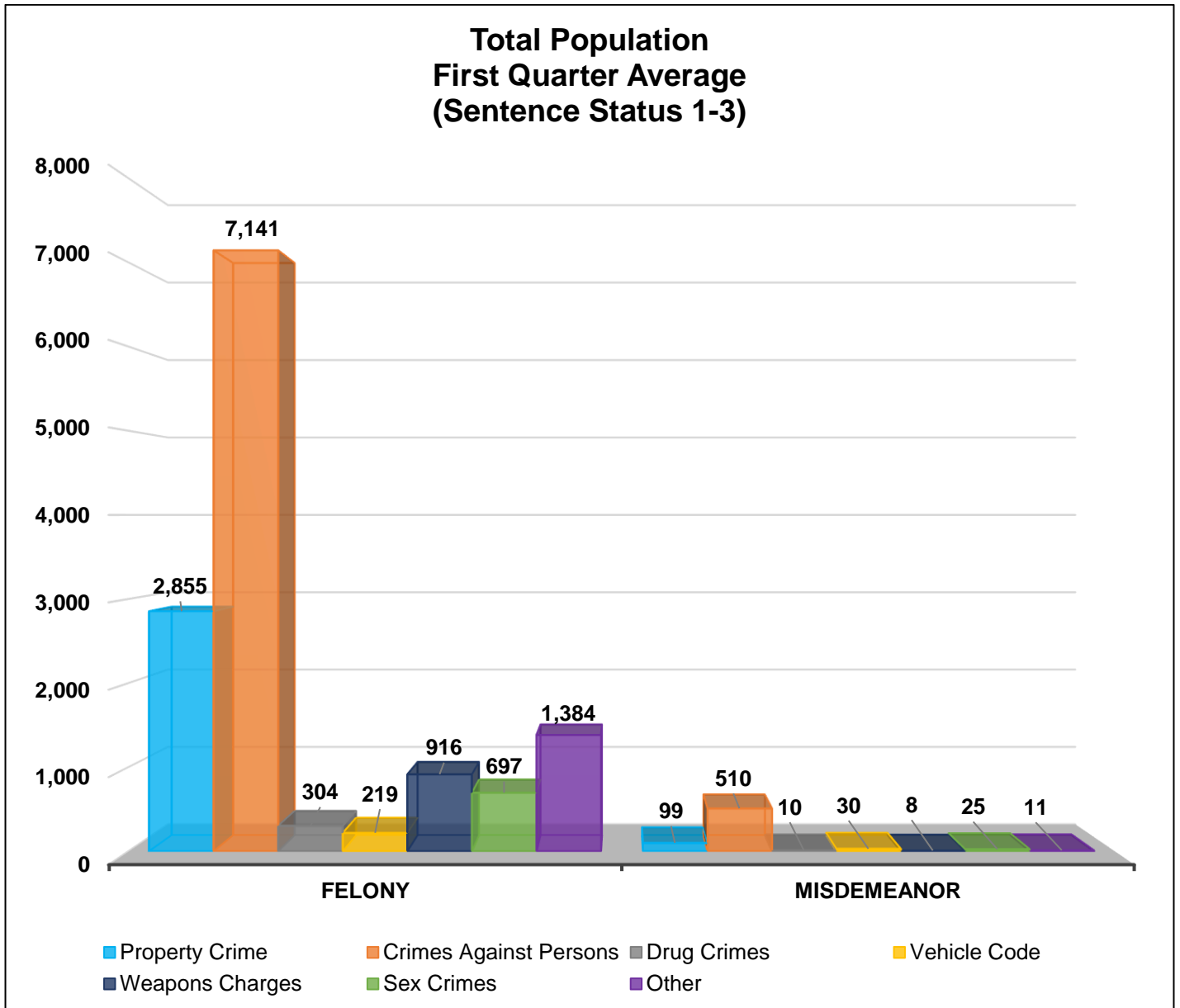
CRIME CLASSIFICATION STATISTICS

The chart below provides an average breakdown for the entire inmate population, both sentenced and un-sentenced, by arrest category.

Total Population (Sentence Status 1-3)

Arrest Category	Property Crimes	Crimes Against Persons	Drug Crimes	Vehicle Codes	Weapons Charges	Sex Crimes	Other	Total	% of the Population
Felony	2,855	7,141	304	219	916	697	1,384	13,516	95%
Misdemeanor	99	510	10	30	8	25	11	693	5%
Total	2,954	7,651	314	249	924	722	1,395	14,209	100%

**Information contained is based on a snapshot of the daily inmate population every Tuesday.*



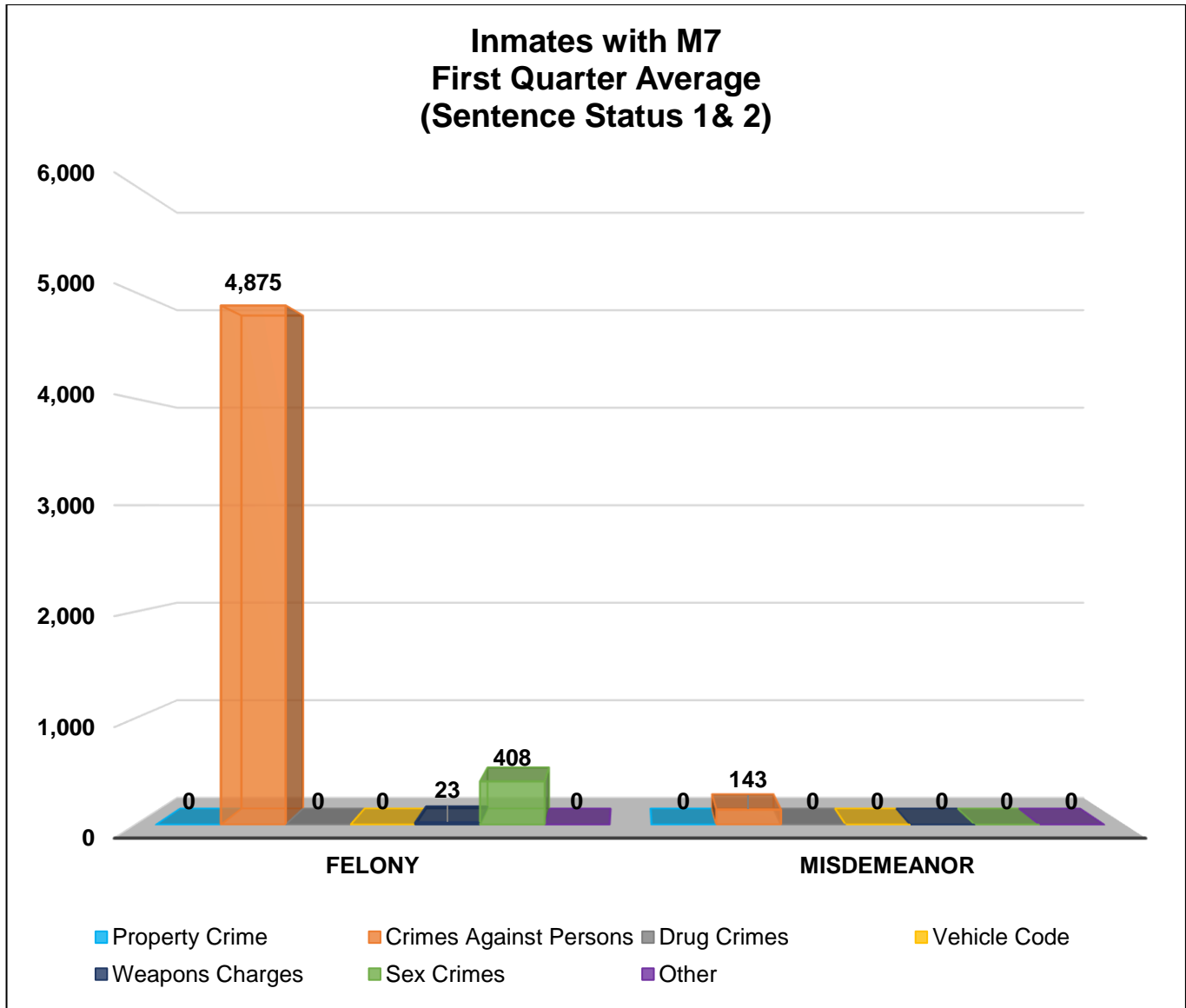
INMATES WITH ASSAULTIVE/VIOLENT CHARGES (M7)

The chart below provides a breakdown for the inmate population with M7 charges, sentence status one and two, and by arrest category.

Inmates with Assaultive/Violent Charges (M7) (Sentence Status 1 and 2)

Arrest Category	Property Crimes	Crimes Against Persons	Drug Crimes	Vehicle Codes	Weapons Charges	Sex Crimes	Other	Total	% of the Sentence Status 1 and 2 Population
Felony	0	4,875	0	0	23	408	0	5,306	97%
Misdemeanor	0	143	0	0	0	0	0	143	3%
Total	0	5,018	0	0	23	408	0	5,449	100%

**Information contained is based on a snapshot of the daily inmate population every Tuesday.*

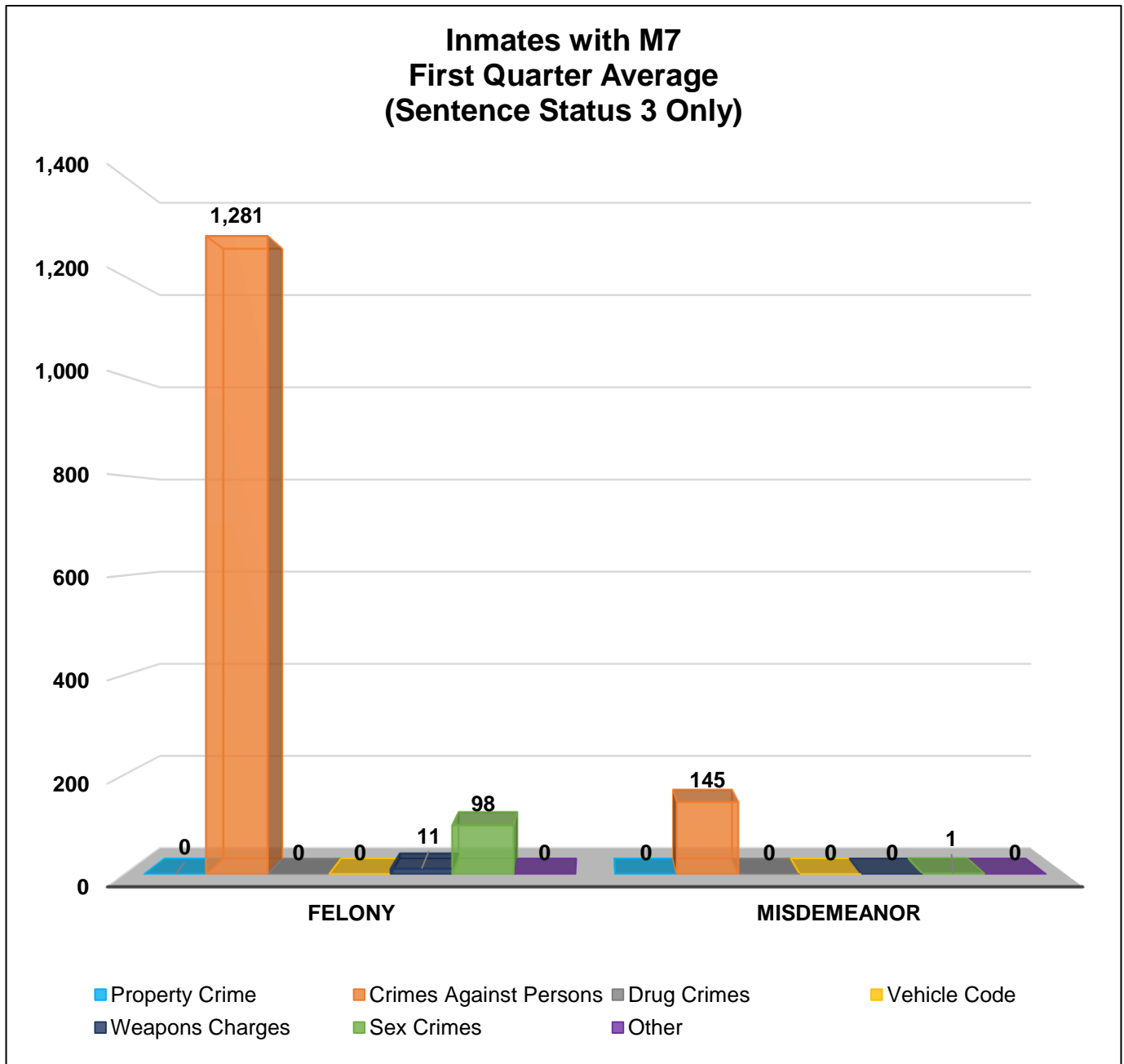


INMATES WITH ASSAULTIVE/VIOLENT CHARGES (M7) CONTINUED

Inmates with Assaultive/Violent Charges (M7) (Sentence Status 3 Only)

Arrest Category	Property Crime	Crimes Against Persons	Drug Crimes	Vehicle Code	Weapons Charges	Sex Crimes	Other	Total	% of the Sentenced Population
Felony	0	1,281	0	0	11	98	0	1,390	90%
Misdemeanor	0	145	0	0	0	1	0	146	10%
Total	0	1,426	0	0	11	99	0	1,536	100%

**Information contained is based on a snapshot of the daily inmate population every Tuesday.*



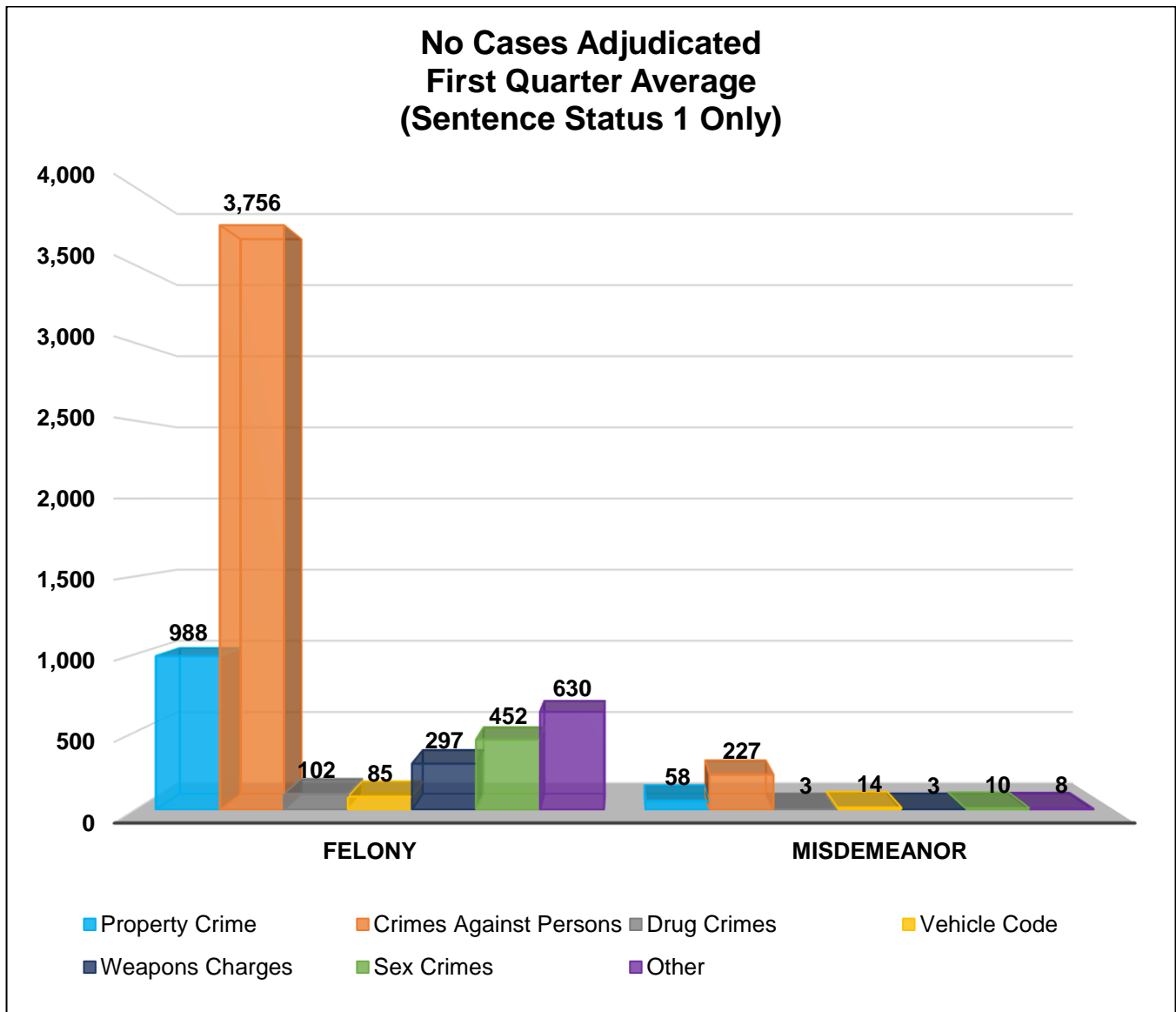
No CASES ADJUDICATED

The chart below provides a breakdown for the inmate population with an open case and have not been sentenced by the courts, along with court returnees.

No Cases Adjudicated (Sentence Status 1 only)

Arrest Category	Property Crime	Crimes Against Persons	Drug Crimes	Vehicle Code	Weapons Charges	Sex Crimes	Other	Total	% of the Sentence Status 1 Population
Felony	988	3,756	102	85	297	452	630	6,310	95%
Misdemeanor	58	227	3	14	3	10	8	323	5%
Total	1,046	3,983	105	99	300	462	638	6,633	100%

**Information contained is based on a snapshot of the daily inmate population every Tuesday.*



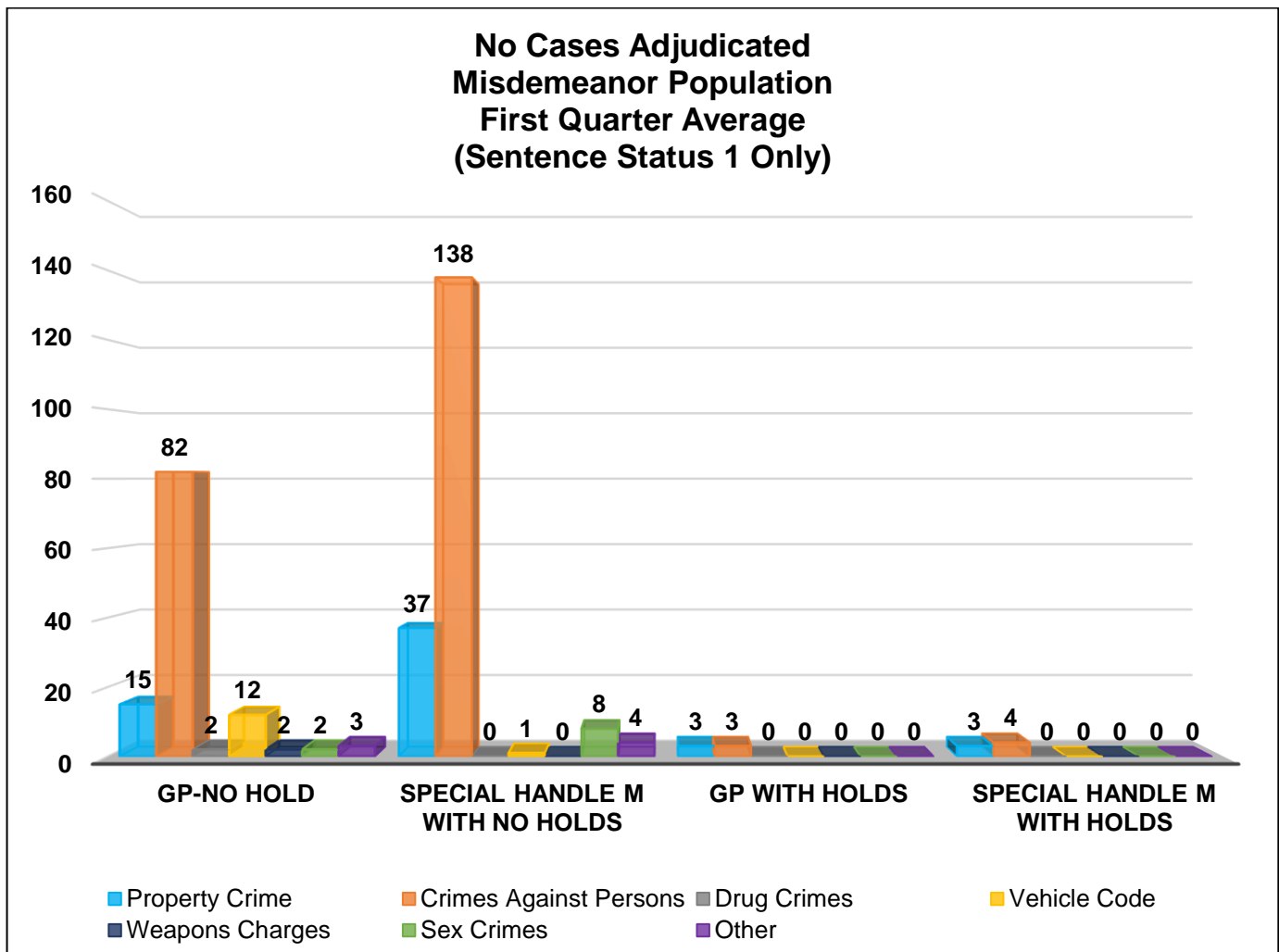
No CASES ADJUDICATED MISDEMEANOR POPULATION

The chart below provides a breakdown for the inmate population with open cases and have not been sentenced by the courts, along with court returnees, who are incarcerated for a misdemeanor and have not yet been convicted. "Holds" indicates the inmates are being held on a matter pending from an outside agency.

No Cases Adjudicated Misdemeanor Population (Sentence Status 1 only)

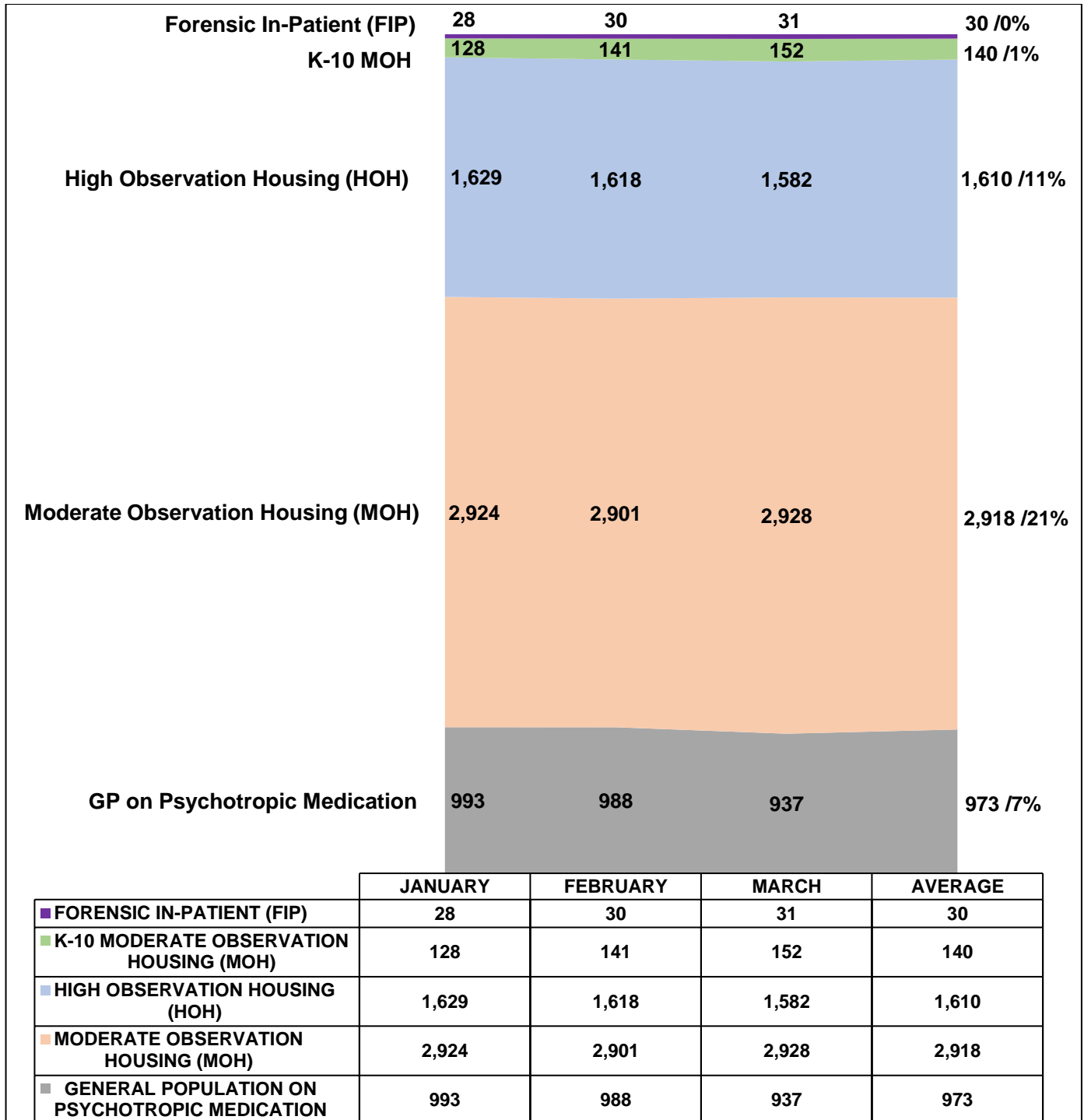
Arrest Category	Property Crimes	Crimes Against Persons	Drug Crimes	Vehicle Codes	Weapons Charges	Sex Crimes	Other	Total	% of the Sentence Status 1 Population
GP No Hold	15	82	2	12	2	2	3	118	37%
Special Handle M with No Holds	37	138	0	1	0	8	4	188	59%
GP with Holds	3	3	0	0	0	0	0	6	2%
Special Handle M with Holds	3	4	0	0	0	0	0	7	2%
Total	58	227	2	13	2	10	7	319	100%

**Information contained is based on a snapshot of the daily inmate population every Tuesday.*



MENTAL HEALTH INMATE POPULATION

This quarter, the overall inmate population was 14,253, of which the mental health population averaged 5,671 and accounted for 40 percent. Inmates identified with mental health needs requiring specialized moderate or high observation housing account for 33 percent of the overall population. The remaining 7 percent have been treated and continue to receive psychotropic medication while housed in general population.



*Information contained is based on a snapshot of the daily inmate population every Tuesday.

MISDEMEANOR INCOMPETENT TO STAND TRIAL (MIST)

County jail houses inmates who are awaiting trial for misdemeanor charges who have been found to be incompetent to stand trial. This quarter, the average number of inmates on MIST is 106.

Misdemeanor Incompetent to Stand Trial (MIST)									
January			February			March			Quarterly Average
Male	Female	Total	Male	Female	Total	Male	Female	Total	
79	35	114	69	37	106	64	34	98	106

Information contained is based on a snapshot of the daily inmate population every Tuesday.

AMERICANS WITH DISABILITIES ACT (ADA)

Americans with Disabilities Act housing is used to accommodate inmates with mobility limitations and/or physical disabilities. This quarter, the average number of inmates requiring ADA is 418 which is lower than last quarter's 433 total.

Americans With Disabilities Act (ADA)				
Disability	January	February	March	Quarterly Average
Seeing Impaired	9	10	10	10
Hearing Impaired	13	13	13	13
Wheelchair	240	246	246	244
Mobility Impaired	160	145	148	151
Monthly Total	422	414	417	418

Information contained is based on a snapshot of the daily inmate population every Tuesday.

MEDICAL HOUSING

Medical Outpatient/Specialty Housing (MOSH) is provided to inmates who require a level of medical treatment beyond that of stabilized medication distribution (pill call). The MOSH area in Men's Central Jail (MCJ) is also used to house inmates with mobility issues.

Additional Medical Housing				
Housing Area	January	February	March	Quarterly Average
Correctional Treatment Center (CTC)	106	111	106	108
Los Angeles County Medical Center (LCMC)	24	25	27	25
MCJ Medical/Clinic*	400	394	377	390
Monthly Total	530	530	510	523

Data are averages gathered from Facility Count Sheet every Tuesday.

**Includes some ADA housing.*

IN-CUSTODY PROGRAMS

LA COUNTY INMATE IN-CUSTODY PROGRAMS

The Los Angeles County jail offers several in-custody programs. They vary from in-custody work assignments, vocational job training, education, and life skill classes, as well as fire camp training and CDCR fire camp placement for AB109 inmates. Various programs awarded sentenced inmates additional time credits for their participation pursuant to the California Penal Code:

CREDIT EARNINGS

Program	Penal Code	Credit Earned	Type of Inmate
Sentenced GT/WT	4019 PC	Day-for-Day (1:1)	All Sentenced Inmates
Conservation	4019.1 PC	One and one half-for One (1.5:1)	All Sentenced Inmates
Fire Camp	4019.2 PC	Two-for-One (2:1)	AB109 Sentenced Inmates
Milestone*	4019.4 PC	Up to 6 weeks per year	All Sentenced Inmates

**Milestone credits are retroactively applied for unsentenced inmates.*

CONSERVATION WORK PROGRAM

The Conservation Work Program (CWP) requires inmates to complete their adjusted sentence while working in various job classifications, giving them the skills and work discipline necessary to increase their chances of success once released. Effective January 2015, all sentenced offenders, including TCS inmates are eligible to receive credits pursuant to Penal Code Section 4019.1. For this quarter, approximately 1,262 offenders (9% of the population) participated in CWP.

CONSERVATION WORK PROGRAM (CWP)				
Inmate Type	January	February	March	Quarterly Average
Participating Inmates	1,257	1,239	1,292	1,262

** Information contained is based on a snapshot of the daily inmate population every Tuesday.*

EDUCATION BASED INCARCERATION PROGRAMS

The Education Based Incarceration (EBI) Program uses traditional and nontraditional education which is designed to reduce incarceration by increasing the educational, civic, social, economic, and life skills of its participants. Offenders who are sentenced are eligible to receive credits pursuant to Penal Code 4019.4. For this quarter, 34 milestone credits were awarded.

The EBI school program continue to be limited due to COVID-19.

FIRE CAMP TRAINING PROGRAM

Fire Camp Training and California Institute for Women (CIW) training are aligned under the CWP. This program is the first step of training before an inmate may participate in a state-facilitated Fire Camp program overseen by the CDCR. Offenders who are sentenced under AB109 are eligible to receive credits pursuant to Penal Code 4019.1. The average number of inmates enrolled in the Fire Camp training program for this quarter was 35.

FIRE CAMP TRAINING CAMP				
Housing Type	January	February	March	Quarterly Average
PDC Fire Camp Training (Men)	35	37	33	35
CIW Fire Camp Training (Women)	0	0	0	0
Monthly Total	35	37	33	35

CALIFORNIA DEPARTMENT OF CORRECTIONS AND REHABILITATION **FIRE CAMP PROGRAM**

Once an inmate passes all necessary requirements in the Fire Camp training program located at Pitchess Detention Center (PDC) East facility, they are transferred to one of five state-contracted fire camp sites where they will serve the remainder of their adjusted sentence. Offenders who are sentenced under AB109 are eligible to receive credits pursuant to Penal Code 4019.2. The average number of inmates assigned to CDCR Fire Camp for this quarter was 5.

CDCR FIRE CAMP				
Fire Camp Locations	January	February	March	Quarterly Average
Acton Fire Camp	1	1	1	1
Francisquito Fire Camp	1	1	1	1
Holton Fire Camp	1	1	1	1
Julius Klein Fire Camp	2	2	2	2
Malibu Women's Fire Camp	0	0	0	0
Monthly Total	5	5	5	5

IN-CUSTODY SUBSTANCE TREATMENT AND REENTRY TRANSITION

The jail-based Substance Treatment and Reentry Transition (START) treatment services provides substance use disorder (SUD) treatment services at the different jail facilities. Treatment services include screening, clinical assessment, group and individual counseling, case management services, medication-assisted treatment, re-entry planning and care coordination.

In-Custody START (CRDF)	January	February	March	Quarterly Average
Enrolled	109	89	90	96
Completed	20	8	20	16
In-Custody START (MCJ)	January	February	March	Quarterly Average
Enrolled	127	92	136	118
Completed	6	5	23	11
In-Custody START (PDC)	January	February	March	Quarterly Average
Enrolled	84	100	90	91
Completed	9	15	7	10
In-Custody START (TTCF)	January	February	March	Quarterly Average
Enrolled	50	52	47	50
Completed	1	3	5	3

ALTERNATIVES TO CUSTODY PROGRAMS

ALTERNATIVES TO CUSTODY PROGRAMS

The Community Transition Unit (CTU), the Community Based Alternatives to Custody (CBAC) unit, and the Compliance Team work together by utilizing a variety of alternatives to custody programming options in an effort to enhance an inmate's chances of success upon release. These programs are conducted in collaboration with local agencies including community and faith based organizations, Department of Mental Health (DMH), Department of Public Health (DPH) and other organizations. It is the Department's goal to program inmates from intake through re-entry into the community. With this approach, the Department hopes to increase public safety and reduce the rate of recidivism.

Supported by release planning overseen by the CTU, and in partnership with contracted services, inmates are provided re-entry assistance through linkages to services that are initiated while they are in-custody and continued upon release. Through the Alternatives to Custody (ATC) programs, qualifying inmates are afforded the opportunity to complete the remaining portion of their sentence in a community treatment program. Inmates who do not qualify for ATC due to security or other reasons are referred to community providers for re-entry assistance.

The ATC programs include:

SUBSTANCE TREATMENT AND REENTRY TRANSITION PROGRAM

The Substance Treatment and Reentry Transition (START) program is a DPH and Substance Abuse Prevention Control (SAPC) funded program that places eligible male and female inmates into residential Substance Use Disorder (SUD) treatment programs on electronic Global Positioning System monitoring as an ATC program.

FEMALE PROGRAMS

The female programs are funded through community grants. They work directly with various residential programs approved by the Department, but not affiliated with the START program, and offer treatment bed for inmates under the ATC program. Several programs cater to specific clientele who fit a specified demographic in regards to age and gender.

VETERAN'S ADMINISTRATION

The Veteran's Administration (VA) funds SUD residential treatment under the ATC program for inmates who are confirmed to be a veteran entitled to VA benefits. The treatment programs are approved by the VA and are vetted by personnel from PMB/CTU.

Program Quarterly Statistics	Enrolled	Completed	Returned to Custody	Absconded
START	16	8	2	0
Female Programs	0	0	0	0
Veterans	0	0	0	0

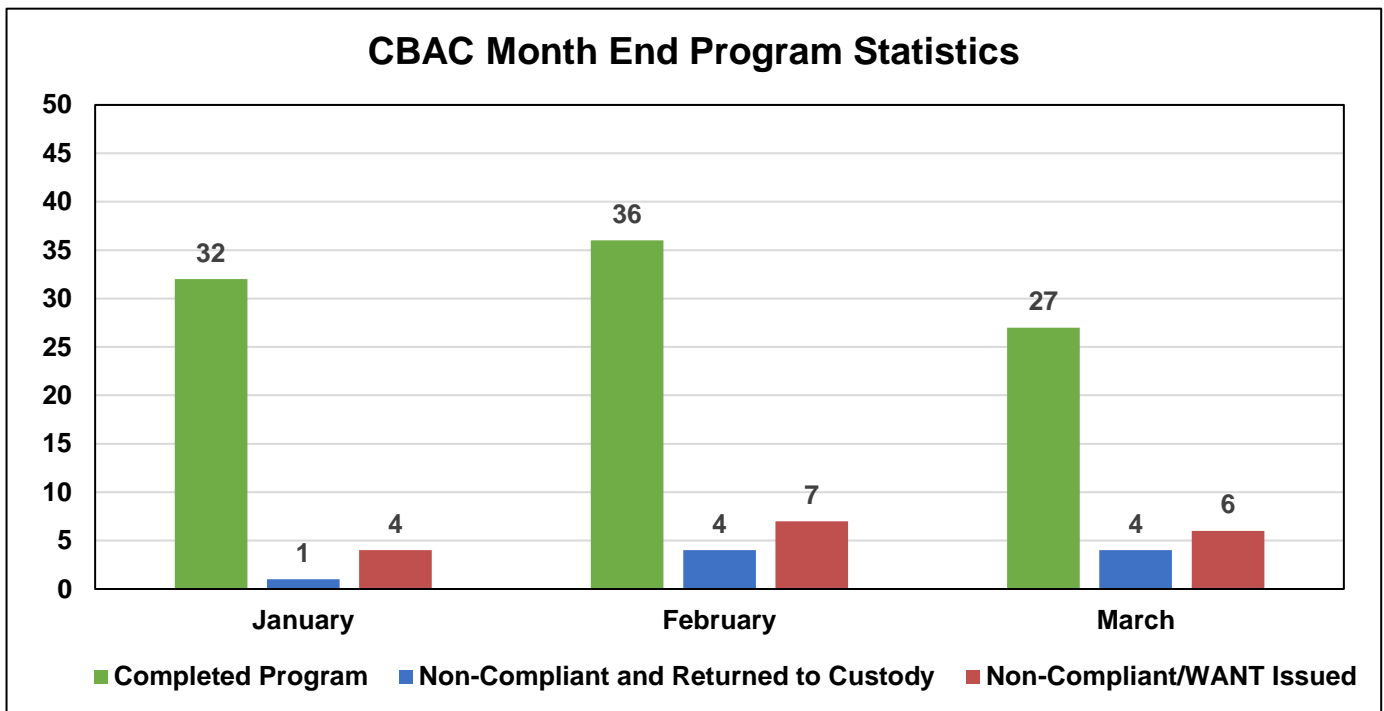
**Referrals and placements to the START community program are on hold pending execution of a new memorandum of agreement.*

COMMUNITY BASED ALTERNATIVES TO CUSTODY

The Population Management Bureau’s (PMB) Community Based Alternatives to Custody (CBAC) unit identifies qualified, low risk, sentenced offenders within the jail population to finish their remaining sentence in an out-of-custody alternative environment. Although these individuals are outside of traditional custody, they are still under the jurisdiction of the Department.

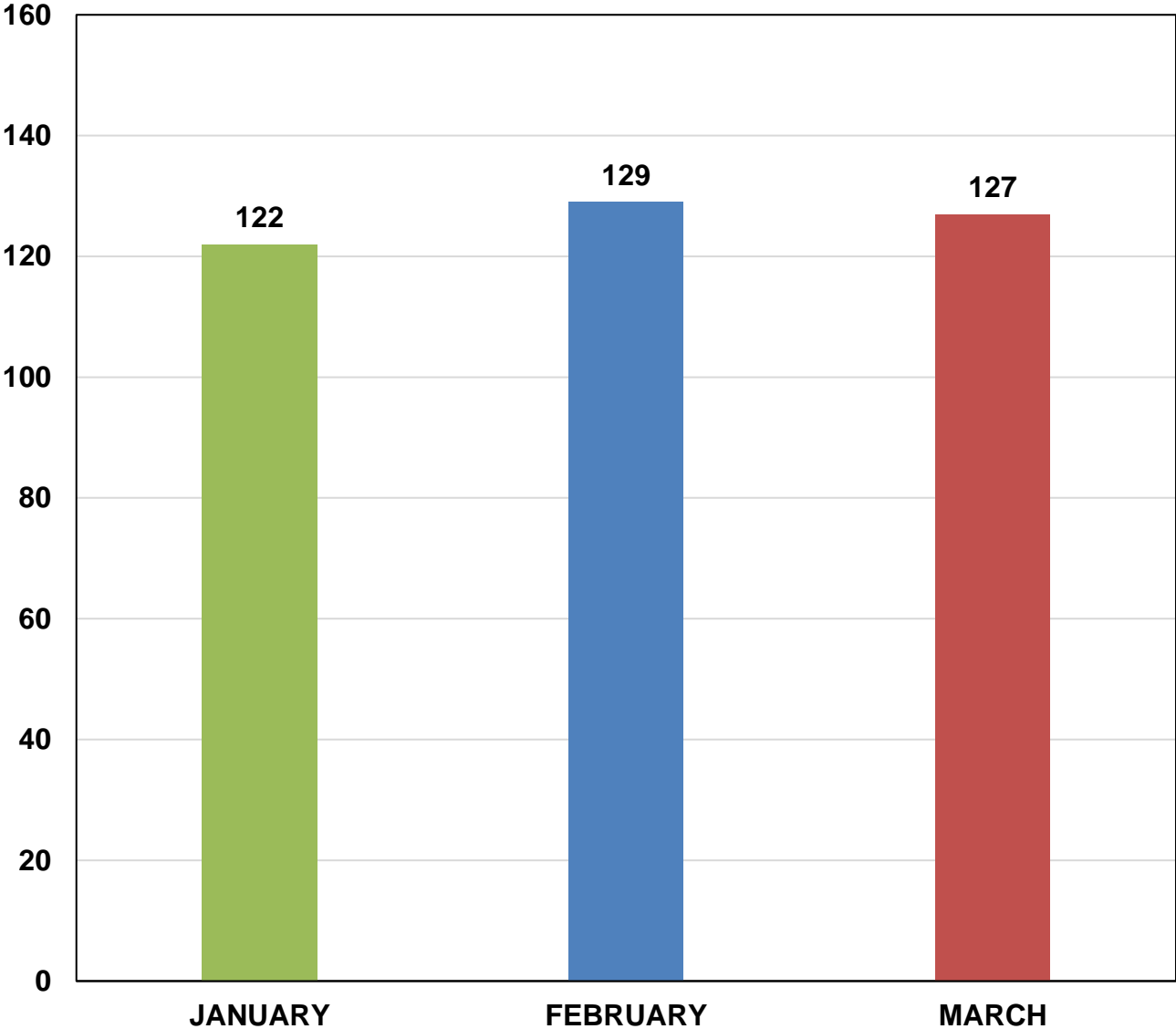
CBAC Monthly Placement									
Program	January			February			March		
	Male	Female	Total	Male	Female	Total	Male	Female	Total
Electronic Monitoring Program	9	2	11	10	4	14	8	2	10
Weekender Work Program	11	0	11	8	1	9	10	0	10
Work Release Program	18	6	24	6	0	6	19	0	19
Monthly Total	38	8	46	24	5	29	37	2	39

The graph below depicts the total number of offenders who successfully completed the remainder of their sentence on a CBAC program. It shows the number of offenders who failed to complete the program, and with the efforts of the PMB Compliance Unit, were returned back to finish their sentence. It also shows those who failed to complete the program and were not returned back to custody.



LA COUNTY ALTERNATIVES TO CUSTODY INMATE POPULATION

**First Quarter 2023
Los Angeles County Alternatives to Custody Inmate Count**



2023 Quarterly ATC Average Daily Inmate Population (ADIP)*
126

**Includes Community Based Alternatives to Custody (CBAC), Fire Camp and inmate station workers.*

RE-ENTRY ASSISTANCE

COMMUNITY RE-ENTRY AND RESOURCE CENTER

The information below represents recently released inmates and inquiries and/or contacts made by the general public who have been assisted with services at the Community Re-entry and Resource Center (CRRC) for the first quarter of 2023.

Inquiry Demographic Population	January	February	March	Total	Average
General Release	517	345	428	1,290	430
General Public	89	52	69	210	70
Alternatives to Custody Program	0	8	0	8	3
Coordinated Release	97	46	153	296	99
Work Release	0	0	0	0	0
Phone Referral	0	0	0	0	0
Monthly Total	703	451	650	1,804	602

Inquiry Demographic Gender	January	February	March	Total	Average
Male	404	240	358	1,002	334
Female	313	219	294	826	275
Monthly Total	717	459	652	1,828	609

Community Transition Unit (CTU) personnel visit the Inmate Reception Center release area to educate and remind inmates waiting to go home about services available at the CRRC. Walks of the release area are performed every 90 minutes.

	January	February	March	Total	Average
Number of 90 Minute Contact Walks	92	90	110	292	97
Number of Inmates Contacted	896	747	949	2,592	864
Number of Flyers Distributed	896	747	949	2,592	864

CTU COORDINATED RELEASES TO VARIOUS PROGRAMS

The final 90 days leading to an inmate's release from custody are the most critical in ensuring a successful transition from custody to Community Based Organization (CBO) treatment centers. During the time leading up to their release, inmates are interviewed several times by the CBO staff and members of the CTU to ensure that they are matched up with a suitable treatment provider.

The coordinated release process helps to create a trust between law enforcement, inmate participants and CBO. The CTU's goal is to provide a successful recovery and re-entry into the community and to ultimately decrease recidivism.

	January	February	March	Total	Average
Coordinated Release	76	52	73	201	67

CTU VITAL RECORDS

Through the Vital Records Program, Department staff members have been deputized by the County Registrar-Recorder to facilitate birth certificate applications for inmates born in Los Angeles County who have requested a certified copy. The fee of \$32 for certified copies of birth certificates is funded by the Inmate Welfare Fund.

All inmates in custody may apply for a replacement California Identification Card. The issued IDs are provided to the inmates upon their release. The inmates must still report to the California Department of Motor Vehicles (DMV) to obtain a driver's license following their release.

Records Processed	January	February	March	Quarterly Total	Quarterly Average
DMV - California Identification Card	263	171	122	556	185
Records – Birth Certificate	161	257	205	623	208
Total	424	428	327	1,179	393

Records Issued	January	February	March	Quarterly Total	Quarterly Average
DMV - California Identification Card	92	0	32	124	41
Records – Birth Certificate	283	155	149	587	196
Total	375	155	181	711	237