



CUSTODY DIVISION POPULATION QUARTERLY REPORT

October - December 2022

Los Angeles County Sheriff's Department

Robert G. Luna, Sheriff

TABLE OF CONTENTS

Executive Summary.....	3
1. Population Trends.....	4
Los Angeles County Inmate Population Graph	
Monthly Average Daily Inmate Population (ADIP) Trend	
Arrests, Bookings, and Releases	
Release Practices	
Homeless and Veteran	
2. Facilities Overview.....	10
Rated Capacities - Board of State and Community Corrections (BSCC)	
Jail Housing Facilities	
Men's Central Jail (MCJ)	
Twin Towers Correctional Facility (TTCF)	
Century Regional Detention Facility (CRDF)	
Pitchess Detention Center (PDC) – East	
Pitchess Detention Center (PDC) – North	
Pitchess Detention Center (PDC) – South	
North County Correctional Facility (NCCF)	
3. Population Overview.....	17
Inmate Population Demographics	
Inmate Population Offender Age Groups	
Jail Population by Security Level	
Inmate Population Breakdown	
Crime Classification Statistics	
Inmates with M7 (Assaultive Charges)	
No Cases Adjudicated	
No Cases Adjudicated Misdemeanor Population	
Mental Health Inmate Population	
Misdemeanor Incompetent to Stand Trial (MIST)	
Americans with Disabilities Act (ADA)	
Medical Housing	
4. In-Custody Programs.....	30
Credit Earnings	
Conservation Work Program (CWP)	
Education Based Incarceration Program (EBI-Milestone)	
Fire Camp Training Program	
California Department of Corrections and Rehabilitation (CDCR) Fire Camp Program	
In-Custody Substance Treatment and Reentry Transition (START) Program	

5. Alternatives to Custody (ATC) Programs.....	34
Community Transition Unit (CTU)	
Substance Treatment and Reentry Transition (START)	
Female Programs	
Veteran’s Administration (VA)	
Community Based Alternatives to Custody (CBAC)	
Los Angeles County ATC Inmate Population Graph	
6. Re-Entry Assistance.....	38
Community Re-Entry and Resource Center (CRRC)	
CTU Coordinated Releases to Various Programs	
CTU Vital Records	

EXECUTIVE SUMMARY

The Los Angeles County Sheriff's Department (Department) is committed to maintaining a secure and constitutional jail system. As part of this effort, a periodic report is essential to better understand and quantify population trends. This ***Custody Division Population Quarterly Report*** summarizes data collected during the fourth quarter of 2022 and is produced by the Population Management Bureau (PMB) Analysis Unit.

The Average Daily Inmate Population (ADIP) in the Los Angeles County (County) jail system during the fourth quarter of 2022 was 14,833. This is higher than the fourth quarter of 2021 average of 13,319.

To manage the inmate population, the Department continued to use percentage release. The short sentence releases increased from 180 to 240 days on July 24th. Inmates serving traditional county sentences completed 10 percent of their court ordered sentences. Inmates serving sentences for felony serious and/or violent offenses (M7 charges) served 100 percent of their sentences, minus any time credits earned. Inmates sentenced under 1170 PC (AB109) served 100 percent of their sentences, minus any time credits earned.

In March 2020, the Department implemented various measures to reduce the jail's inmate population in an effort to mitigate the spread of the COVID-19 virus among those incarcerated and staff. With the safety of the communities in mind and with an emphasis on those inmates that were medically vulnerable, the Department worked in a collaborative process with the District Attorney, Public Defender, Alternate Public Defender, Superior Court and Office of Diversion and Reentry, to reduce the overall inmate population.

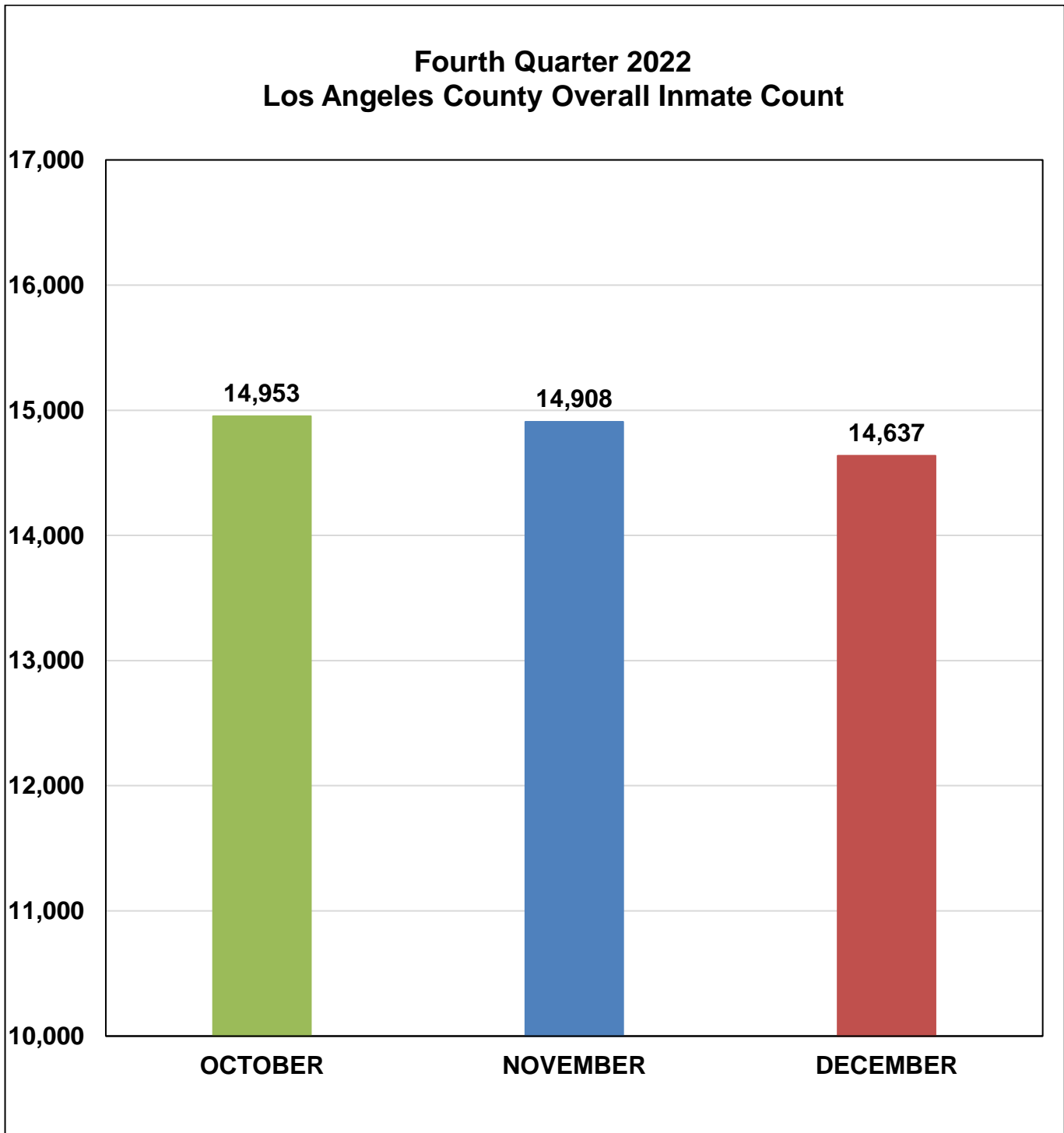
The Traditional County Sentenced (TCS) population this quarter was approximately 868, slightly lower than last quarter's total of 872. The number of inmates sentenced under 1170 PC was approximately 1,075, which is higher than last quarter's total of 924.

The mental health population increased from 5,714 last quarter to 5,819 this quarter and comprised 39 percent of the total inmate population. During the fourth quarter of 2021, the mental health population was 5,715 and comprised 43 percent of the total inmate population.

Information encompassed in this report/document depicts data related to a specific date and time. Data may differ based on numerous factors related to an inmate's status, disposition, facility, etc. Information may differ based on systems queried, archived information, date/time parameters or numerous other factors. Information in disparate reports should not be combined as data sets may be inconsistent in queries and responses.

POPULATION TRENDS

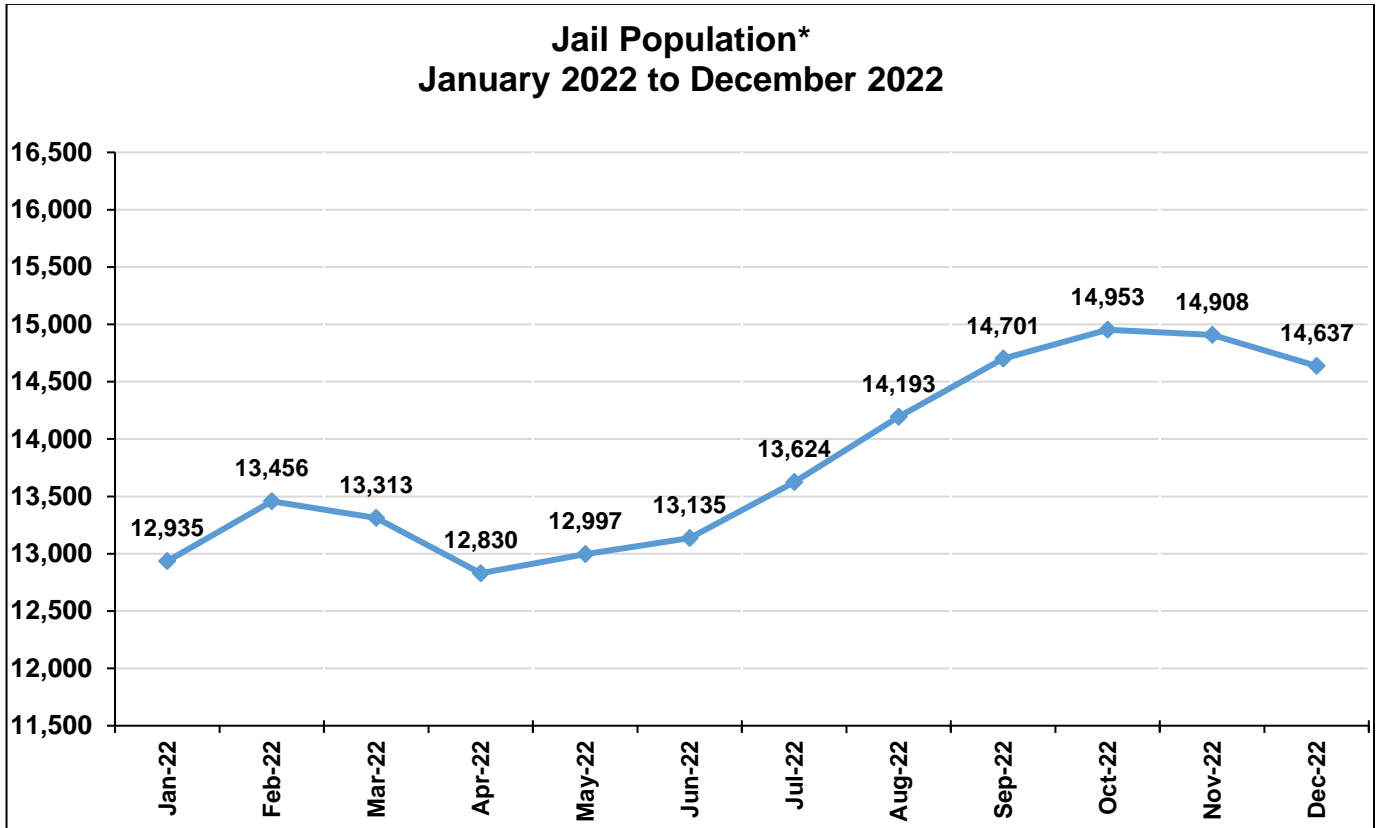
LASD INMATE POPULATION



2022 Quarterly Overall Division Average Daily Inmate Population (ADIP) *
14,833

**Quarterly Division ADIP reflects all inmates processed into IRC, excludes ATC.*

MONTHLY ADIP TREND



Yearly ADIP Comparison		
Year	ADIP	Notes
2011	15,014	(October - AB109 enacted)
2012	18,043	
2013	18,687	
2014	18,681	(November - Prop 47)
2015	17,049	
2016	16,613	
2017	17,024	
2018	16,910	
2019	17,070	
2020	14,212	(March - COVID-19)
2021	14,577	
2022	13,807	

*Excludes Alternatives to Custody

FOURTH QUARTER 2022 - ARREST AND BOOKING STATS

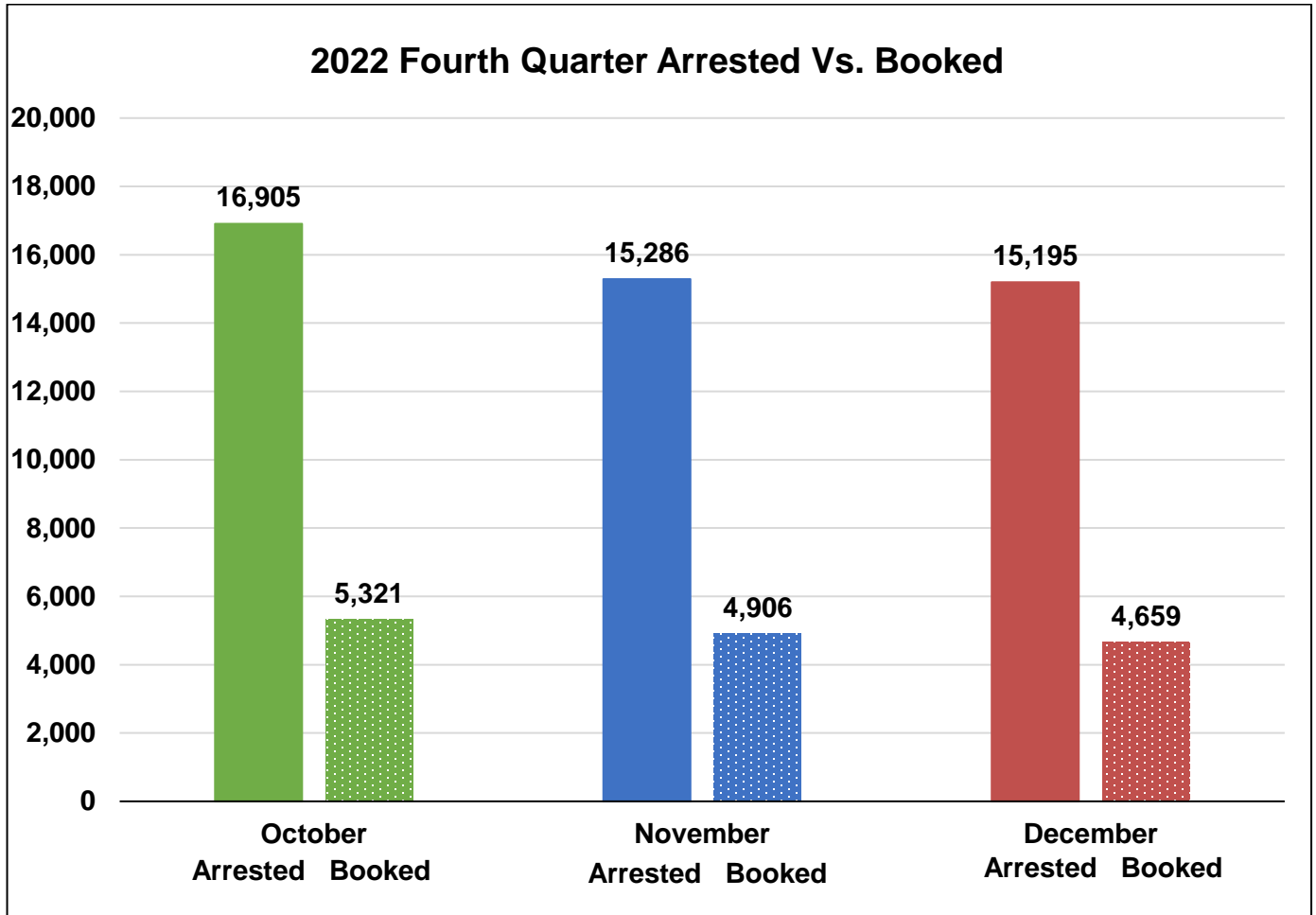
Arrest activity decreased 13% to 47,386 versus last quarter (54,598). The number of inmates booked into the County jail this quarter decreased 12% to 14,886 versus last quarter (16,925).

	October		November		December		Quarterly Total	Quarterly Average	Quarterly %
	Monthly Total	%	Monthly Total	%	Monthly Total	%			
Felony	8,438	50%	7,460	49%	7,247	48%	23,145	7,715	49%
Misdemeanor	8,356	49%	7,751	51%	7,881	52%	23,988	7,996	51%
Other*	111	1%	75	0%	67	0%	253	84	0%
Total Arrested	16,905		15,286		15,195		47,386	15,795	100%
Total Booked into LA County	5,321	31%	4,906	32%	4,659	31%	14,886	4,962	31%

*Other includes child welfare, delinquent, infraction, and non-specific charges.

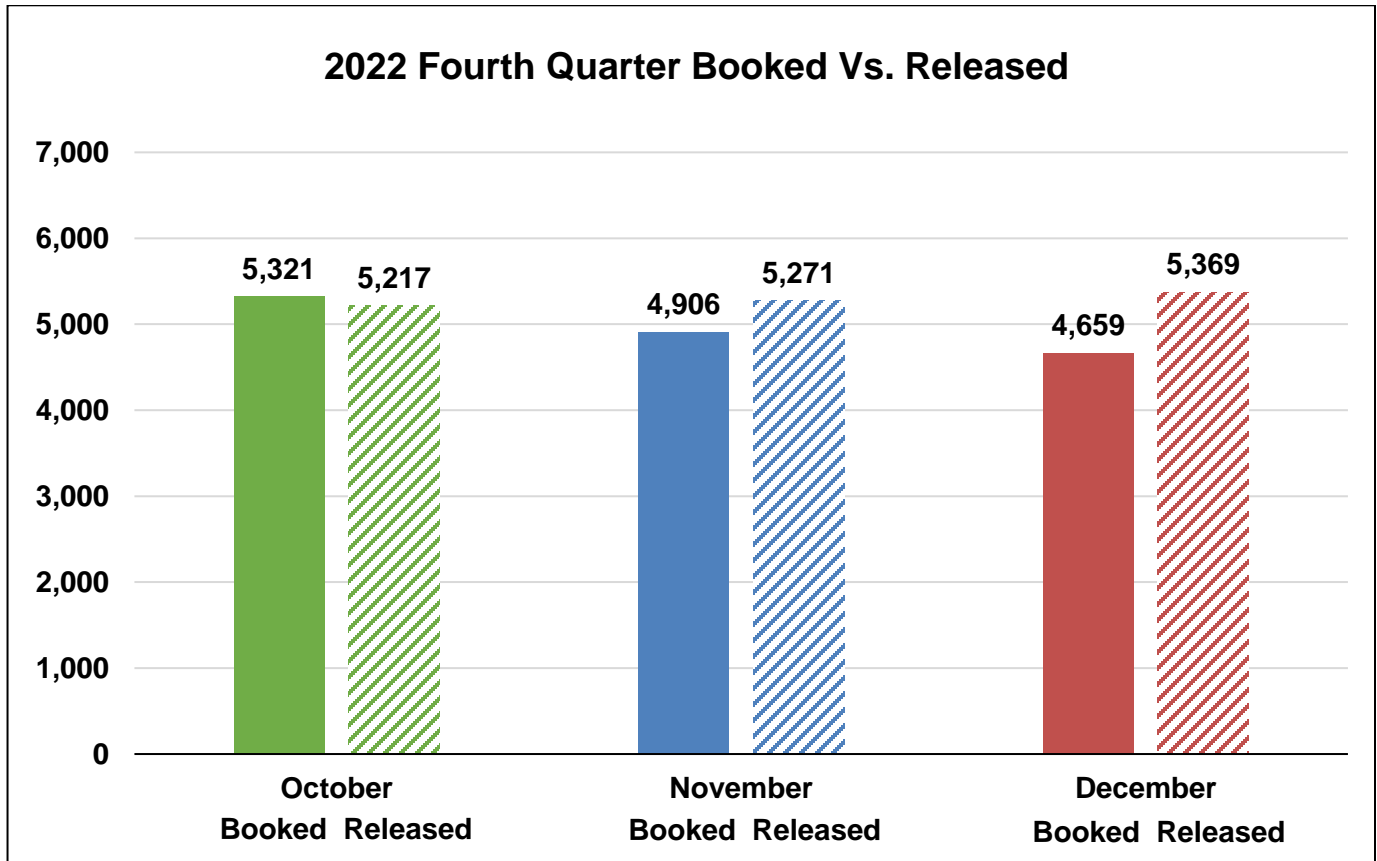
FOURTH QUARTER 2022 - ARRESTS VS. BOOKINGS

The graph below compares the total arrests and bookings for this quarter.



FOURTH QUARTER 2022 – BOOKINGS VS. RELEASES

The Department averaged approximately 5,286 releases this quarter. This is a 2% decrease compared to last quarter's average of 5,395 releases.



COUNTY JAIL RELEASE PRACTICES

Due to conditions of overcrowding, traditional county sentenced inmates were subject to early release under the following conditions. In an effort to mitigate the spread of COVID-19, additional release measures were used. The M7 charges were modified, and additional releases were made in collaboration with other county agencies. Bookings were affected by bail changes and COVID-19. CDCR continued to accept state prisoners.

Month	Release Criteria		M7 Release Criteria ¹		Short Sentence ²	
	Male	Female	Felony	Misdemeanor	Male	Female
October	10%	10%	100%	100%	240 days	240 days
November	10%	10%	100%	100%	240 days	240 days
December	10%	10%	100%	100%	240 days	240 days

¹ Inmates classified as M7 have sentences for designated serious and/or violent offenses or have notoriety in the community, which requires their record jacket to go through extra security checks upon release from LASD's custody.

² Shorts are inmates sentenced to a term in county jail, which after all legal credits are awarded and the current jail percentage time is considered, are immediately released from LASD's custody after processing from court.

HOMELESS

The chart below provides an average breakdown of the homeless inmate population who stated they were homeless by gender, major race, and age category. The homeless inmates comprised 27% of the total population.¹

	October	November	December	Average
Male	3,475	3,455	3,343	3,424
Female	592	612	581	595
Total	4,067	4,067	3,924	4,019

	October	November	December	Average
Hispanic	2,146	2,150	2,089	2,128
Black	1,164	1,171	1,119	1,151
White	633	617	586	612
Other	124	129	130	128
Total	4,067	4,067	3,924	4,019

	October	November	December	Average
18 to 25	558	572	558	563
26 to 34	1,562	1,547	1,508	1,539
35 to 39	631	643	628	634
40 to 44	520	512	490	507
45 & Older	796	793	740	776
Total	4,067	4,067	3,924	4,019

¹ Homeless data is collected from COMPAS based on a snapshot of the inmate population collected each business day. These are numbers based upon self-identification and have not been confirmed.

VETERAN

The chart below provides an average breakdown of the veteran inmate population who stated they have served in the United States Military by gender, major race, and age category. The veteran inmates comprised 2% of the total population.²

	October	November	December	Average
Male	277	276	270	274
Female	9	7	7	8
Total	286	283	277	282

	October	November	December	Average
Hispanic	84	84	87	85
Black	108	102	97	102
White	81	84	78	81
Other	13	13	15	14
Total	286	283	277	282

	October	November	December	Average
18 to 25	11	12	11	11
26 to 34	63	62	61	62
35 to 39	38	38	43	40
40 to 44	51	56	55	54
45 & Older	123	115	107	115
Total	286	283	277	282

² Veteran data is collected from COMPAS based on a snapshot of the inmate population collected each business day. These are numbers based upon self-identification and have not been confirmed by the Veterans Administration.

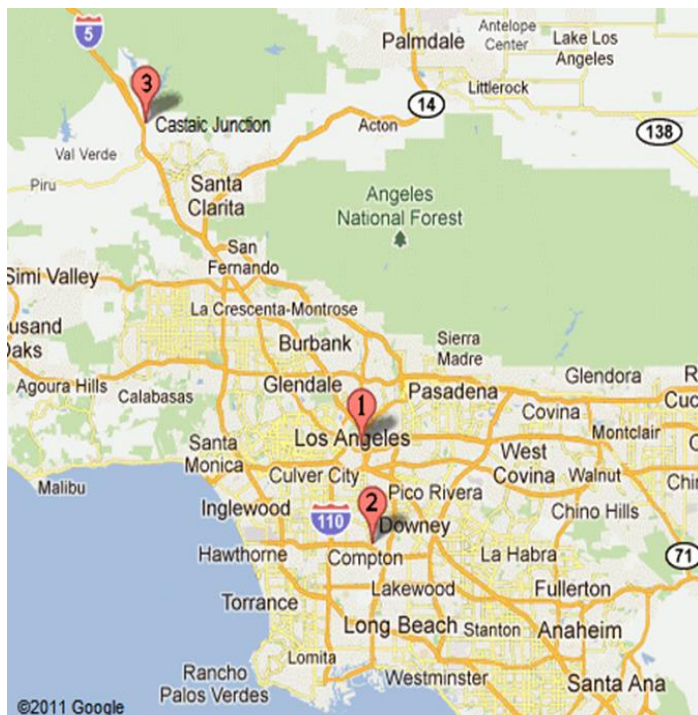
FACILITIES OVERVIEW

RATED CAPACITY

The Board of State and Community Corrections (BSCC) is a government body which recommends capacity limits for county jails. The BSCC conducts biennial jail inspections; the Department was rated in July 2020. The BSCC does not rate processing, medical and discipline beds.

Board of State and Community Corrections				
LASD Custody Facilities	BSCC Rated Capacity	Quarterly Facility ADIP	Above BSCC Rated Capacity	% Over BSCC Capacity
Men's Central Jail	3,512	3,737	225	6%
Men's Central Jail Outpatient Clinic	Unrated	397	-	-
Twin Towers Correctional Facility	2,432	2,454	22	1%
Correctional Treatment Center	Unrated	118	-	-
Century Regional Detention Facility	1,708	1,522	-186	-11%
CRDF Reception Center	Unrated	2	-	-
Pitchess Detention Center – East	926	29	-897	-97%
Pitchess Detention Center – North	830	1,265	435	52%
Pitchess Detention Center – South	782	1,154	372	48%
North County Correctional Facility	2,214	3,891	1,677	76%
Inmate Reception Center	Unrated	239	-	-
LCMC Jail Wards	Unrated	24	-	-
Total BSCC Rated Capacity*	Rated Quarterly Facility ADIP	Total Above BSCC Rated Capacity	Total % Over BSCC Capacity	Total % Over BSCC Capacity Excluding East Facility
12,404	14,052	1,648	13%	22%

*Statistical data gathered from *Board of State and Community Corrections Inspection Report 07/2020*



LA County Jail Facilities	
1	<ul style="list-style-type: none"> ➤ Men's Central Jail (MCJ) ➤ Twin Towers Correctional Facility (TCF) ➤ Los Angeles County Medical Center (LCMC) ➤ Correctional Treatment Center (CTC) ➤ Inmate Reception Center (IRC)
2	<ul style="list-style-type: none"> ➤ Century Regional Detention Facility (CRDF)
3	<ul style="list-style-type: none"> ➤ Pitchess Detention Center (PDC) ➤ PDC East Facility ➤ PDC North Facility ➤ PDC South Facility ➤ North County Correctional Facility (NCCF)

JAIL HOUSING FACILITIES

MEN'S CENTRAL JAIL TOTAL INMATE POPULATION 2022					
Security Level	October	November	December	Quarterly Average	% of Population
Security Level Low 1-4	217	216	223	219	5%
Security Level Medium 5-7	2,348	2,338	2,394	2,360	57%
Security Level High 8-9	1,556	1,581	1,540	1,559	38%
Facility Total	4,121	4,135	4,157	4,138	100%
SUBPOPULATION HOUSED THROUGHOUT FACILITY¹					
Housing Type	October	November	December	Quarterly Average	
Administratively Segregated (K-10) ²	44	28	32	35	
Restrictive Housing (K-17, K-18, K-19, K-20) ³	263	250	260	258	
Americans with Disabilities Act (ADA)	214	206	203	208	
Discipline	46	51	46	48	
General Population on Psychotropic Meds	596	571	558	575	
Inmate Workers	366	337	326	343	
LGBT (K-6G)	345	355	339	346	
Medical/Clinic	397	398	404	400	
Other (K-6T/B) ⁵	305	310	295	303	
Pro-Per	68	68	67	68	
Mentally Ill – Moderate Observation / Service Area (MOH)	900	956	975	944	
Sex Crimes Against Children (K-6Y)	319	325	307	317	
Developmentally Disabled	11	10	10	10	

¹ Subpopulation housed throughout facility includes those who are classified with special housing needs and are included in the total inmate population. An inmate may belong to more than one subpopulation.

² K-10 Administratively segregated for various reasons including danger to self or others.

³ K-17 Disruptive; K-18 Protective Custody; K-19 Major Disruptive; K-20 Highly Dangerous.

⁴ K-1 Law Enforcement relation in custody.

⁵ K-6T Contempt of court, K-6B threatened by others.

* Statistical data are averages gathered from Facility Count Sheet every Tuesday.

TWIN TOWERS CORRECTIONAL FACILITY TOTAL INMATE POPULATION 2022					
Security Level	October	November	December	Quarterly Average	% of Population
Security Level Low 1-4	208	195	212	205	8%
Security Level Medium 5-7	1,884	1,869	1,800	1,851	71%
Security Level High 8-9	567	526	541	545	21%
Facility Total	2,659	2,590	2,553	2,601	100%
SUBPOPULATION HOUSED THROUGHOUT FACILITY¹					
Housing Type	October	November	December	Quarterly Average	
Administratively Segregated (K-10) ²	61	75	61	66	
Restrictive Housing (K-17, K-18, K-19, K-20) ³	130	130	137	132	
Administratively Segregated (K-1) ⁴	10	9	7	9	
Administratively Segregated (K-6B) ⁵	118	109	120	116	
Americans With Disabilities (ADA)	198	202	192	197	
Discipline	13	17	14	15	
Female Medical (CTC)	15	14	13	14	
General Population on Psychotropic Meds Security Level 1-4	15	15	13	14	
General Population on Psychotropic Meds Security Level 5-7	190	196	187	191	
General Population on Psychotropic Meds Security Level 8-9	57	51	42	50	
LGBT (K-6G)	53	48	48	50	
Medical (CTC)	105	103	104	104	
Mentally III – High Observation Housing (HOH)	1,322	1,309	1,246	1,292	
Mentally III – Moderate Observation / Service Area (MOH)	2,751	2,738	2,722	2,737	
Mentally III – Moderate Observation Housing (MOH) Sex Crimes Against Children (K-6Y)	55	51	60	55	

¹ Subpopulation housed throughout facility includes those who are classified with special housing needs and are included in the total inmate population. An inmate may belong to more than one subpopulation.

² K-10: Administratively segregated for various reasons including danger to self or others.

³ K-17: Disruptive; K-18: Protective Custody; K-19: Major Disruptive; K-20: Highly Dangerous.

⁴ K-1 Law Enforcement relation in custody.

⁵ K-6B: Administratively segregated are at risk of assault in GP housing.

* Statistical data are averages gathered from Facility Count Sheet every Tuesday.

**CENTURY REGIONAL DETENTION FACILITY
TOTAL INMATE POPULATION
2022**

Security Level	October	November	December	Quarterly Average	% of Population
Security Level Low 1-4	242	231	220	231	15%
Security Level Medium 5-7	1,058	1,056	1,024	1,046	68%
Security Level High 8-9	276	264	270	270	17%
Facility Total	1,576	1,551	1,514	1,547	100%

SUBPOPULATION HOUSED THROUGHOUT FACILITY¹

Housing Type	October	November	December	Quarterly Average
Administratively Segregated (K-10) ²	16	18	23	19
Restrictive Housing (K-17, K-18, K-19, K-20) ³	32	32	32	32
Americans With Disabilities Act (ADA)	18	18	19	18
K-8 Pregnant, Post-partum, Miscarriage or Terminated Pregnancy	22	23	28	24
Discipline	18	18	11	16
Inmate Workers	137	146	133	139
Medical/Clinic	4	4	3	4
Mentally Ill – High Observation Housing (HOH)	417	398	389	401
Mentally Ill – Moderate Observation Housing / Service Area (MOH)	380	398	363	380
Administratively Segregated (K-6B) ⁴	7	7	9	8
Sex Crimes Against Children (K-6Y)	9	8	7	8

¹ Subpopulation housed throughout facility includes those who are classified with special housing needs and are included in the total inmate population. An inmate may belong to more than one subpopulation.

² K-10-Administratively segregated for various reasons including danger to self or others.

³ K-17: Disruptive; K-18: Protective Custody; K-19: Major Disruptive; K-20: Highly Dangerous.

⁴ K-6B: Administratively segregated are at risk of assault in GP housing.

* Statistical data are averages gathered from Facility Count Sheet every Tuesday.

PITCHESS DETENTION CENTER – EAST FACILITY (FIRE CAMP) TOTAL INMATE POPULATION 2022					
Security Level	October	November	December	Quarterly Average	% of Population
Security Level Low 1-4	11	10	10	10	34%
Security Level Medium 5-7	18	19	21	19	66%
Security Level High 8-9	0	0	0	0	0%
Facility Total	29	29	31	29	100%

* Statistical data are averages gathered from Facility Count Sheet every Tuesday.

PITCHESS DETENTION CENTER – NORTH TOTAL INMATE POPULATION 2022					
Security Level	October	November	December	Quarterly Average	% of Population
Security Level Low 1-4	56	53	44	51	4%
Security Level Medium 5-7	1,009	1,015	1,008	1,011	80%
Security Level High 8-9	206	192	192	197	16%
Facility Total	1,271	1,260	1,244	1,259	100%
SUBPOPULATION HOUSED THROUGHOUT FACILITY¹					
HOUSING TYPE	October	November	December	Quarterly Average	
Discipline	6	8	9	8	
Sex Crimes Against Children (K-6Y)	380	384	375	380	
Mentally Ill - Moderate Observation Housing (MOH)	788	716	701	735	

¹ Subpopulation housed throughout facility includes those who are classified with special housing needs and are included in the total inmate population. An inmate may belong to more than one subpopulation.

* Statistical data are averages gathered from Facility Count Sheet every Tuesday.

PITCHESS DETENTION CENTER - SOUTH TOTAL INMATE POPULATION 2022					
Security Level	October	November	December	Quarterly Average	% of Population
Security Level Low 1-4	92	55	48	65	6%
Security Level Medium 5-7	1,119	1,084	1,061	1,088	94%
Security Level High 8-9	0	0	0	0	0%
Facility Total	1,211	1,139	1,109	1,153	100%
SUBPOPULATION HOUSED THROUGHOUT FACILITY¹					
Housing Type	October	November	December	Quarterly Average	
Inmate Workers	176	171	176	174	

¹ Subpopulation housed throughout facility includes those who are classified with special housing needs and are included in the total inmate population. An inmate may belong to more than one subpopulation.

On September 13, 2022, additional dorm was converted to low level 1-4 security housing.

* Statistical data are averages gathered from Facility Count Sheet every Tuesday.

NORTH COUNTY CORRECTIONAL FACILITY TOTAL INMATE POPULATION 2022					
Security Level	October	November	December	Quarterly Average	% of Population
Security Level Low 1-4	203	248	251	234	6%
Security Level Medium 5-7	2,110	2,205	2,078	2,131	55%
Security Level High 8-9	1,502	1,517	1,475	1,498	39%
Facility Total	3,815	3,970	3,804	3,863	100%
SUBPOPULATION HOUSED THROUGHOUT FACILITY¹					
Housing Type	October	November	December	Quarterly Average	
Restrictive Housing (K-17, K-18, K-19, K-20) ²	15	18	20	18	
Administratively Segregated (K6-B)	177	167	180	175	
Discipline	67	61	69	66	
Inmate Workers	500	526	471	499	
Veterans	17	54	37	36	

¹ Subpopulation housed throughout facility includes those who are classified with special housing needs and are included in the total inmate population. An inmate may belong to more than one subpopulation.

² K-17: Disruptive; K-18: Protective Custody; K-19: Major Disruptive; K-20: Highly Dangerous.

* Statistical data are averages gathered from Facility Count Sheet every Tuesday.

POPULATION OVERVIEW

INMATE POPULATION DEMOGRAPHICS

Racial demographics this quarter indicate the three most populous racial groups within the County jail for both male and female offenders are Hispanic (55%), Black (29%), and White (13%).

Combined	October 2022	
	Race	Population
Hispanic	8,113	55%
Black	4,375	29%
White	1,898	13%
All Others	494	3%
Chinese	38	0%
Filipino	23	0%
Pacific Islanders	12	0%
Japanese	1	0%
American Indian	8	0%
Total	14,962	100%

November 2022		
Race	Population	%
Hispanic	8,129	55%
Black	4,339	29%
White	1,887	13%
All Others	494	3%
Chinese	43	0%
Filipino	21	0%
Pacific Islanders	12	0%
Japanese	1	0%
American Indian	8	0%
Total	14,934	100%

December 2022		
Race	Population	%
Hispanic	8,015	55%
Black	4,224	29%
White	1,854	13%
All Others	474	3%
Chinese	39	0%
Filipino	22	0%
Pacific Islanders	13	0%
Japanese	3	0%
American Indian	11	0%
Total	14,655	100%

Quarterly Average	Quarterly %
8,085	55%
4,313	29%
1,880	13%
487	3%
40	0%
22	0%
12	0%
2	0%
9	0%
14,850	100%

Male	October 2022	
	Race	Population
Hispanic	7,376	56%
Black	3,905	29%
White	1,601	12%
All Others	423	3%
Chinese	37	0%
Filipino	23	0%
Pacific Islanders	11	0%
Japanese	1	0%
American Indian	8	0%
Total	13,385	100%

November 2022		
Race	Population	%
Hispanic	7,397	56%
Black	3,879	29%
White	1,596	12%
All Others	427	3%
Chinese	41	0%
Filipino	20	0%
Pacific Islanders	11	0%
Japanese	1	0%
American Indian	7	0%
Total	13,379	100%

December 2022		
Race	Population	%
Hispanic	7,307	56%
Black	3,768	29%
White	1,572	12%
All Others	413	3%
Chinese	37	0%
Filipino	21	0%
Pacific Islanders	11	0%
Japanese	3	0%
American Indian	10	0%
Total	13,142	100%

Quarterly Average	Quarterly %
7,360	56%
3,851	29%
1,590	12%
421	3%
38	0%
21	0%
11	0%
2	0%
8	0%
13,302	100%

Female	October 2022	
	Race	Population
Hispanic	737	47%
Black	470	30%
White	297	19%
All Others	71	4%
Chinese	1	0%
Filipino	0	0%
Pacific Islanders	1	0%
Japanese	0	0%
American Indian	0	0%
Total	1,577	100%

November 2022		
Race	Population	%
Hispanic	732	47%
Black	460	30%
White	291	19%
All Others	67	4%
Chinese	2	0%
Filipino	1	0%
Pacific Islanders	1	0%
Japanese	0	0%
American Indian	1	0%
Total	1,555	100%

December 2022		
Race	Population	%
Hispanic	708	47%
Black	456	30%
White	282	19%
All Others	61	4%
Chinese	2	0%
Filipino	1	0%
Pacific Islanders	2	0%
Japanese	0	0%
American Indian	1	0%
Total	1,513	100%

Quarterly Average	Quarterly %
725	47%
462	31%
290	18%
66	4%
2	0%
1	0%
1	0%
0	0%
1	0%
1,548	100%

*Statistical data are averages gathered from Custody Division Daily Briefing Report every Tuesday.

INMATE POPULATION OFFENDER AGE GROUPS

The 26-34 year old cohort was the most frequently represented age group within the jail population this quarter, followed by the 45 & older and the 18-25.

Combined	October 2022		November 2022		December 2022		Quarterly Average	Quarterly %
Age Group	Population	%	Population	%	Population	%		
18 to 25	2,413	16%	2,392	16%	2,336	16%	2,380	16%
26 to 34	5,567	37%	5,581	37%	5,485	37%	5,544	37%
35 to 39	2,287	15%	2,292	15%	2,264	15%	2,281	15%
40 to 44	1,769	12%	1,768	12%	1,734	12%	1,757	12%
45 & Older	2,926	20%	2,901	20%	2,836	20%	2,888	20%
Total	14,962	100%	14,934	100%	14,655	100%	14,850	100%

Male	October 2022		November 2022		December 2022		Quarterly Average	Quarterly %
Age Group	Population	%	Population	%	Population	%		
18 to 25	2,169	16%	2,158	16%	2,127	16%	2,151	16%
26 to 34	4,918	37%	4,935	37%	4,844	37%	4,899	37%
35 to 39	2,023	15%	2,031	15%	2,020	15%	2,025	15%
40 to 44	1,606	12%	1,598	12%	1,567	12%	1,590	12%
45 & Older	2,669	20%	2,657	20%	2,584	20%	2,637	20%
Total	13,385	100%	13,379	100%	13,142	100%	13,302	100%

Female	October 2022		November 2022		December 2022		Quarterly Average	Quarterly %
Age Group	Population	%	Population	%	Population	%		
18 to 25	244	16%	234	15%	209	15%	229	15%
26 to 34	649	41%	646	41%	641	42%	645	42%
35 to 39	264	17%	261	17%	244	16%	256	16%
40 to 44	163	10%	170	11%	167	11%	167	11%
45 & Older	257	16%	244	16%	252	16%	251	16%
Total	1,577	100%	1,555	100%	1,513	100%	1,548	100%

*Statistical data are averages gathered from Custody Division Daily Briefing Report every Tuesday.

JAIL POPULATION BY SECURITY LEVEL

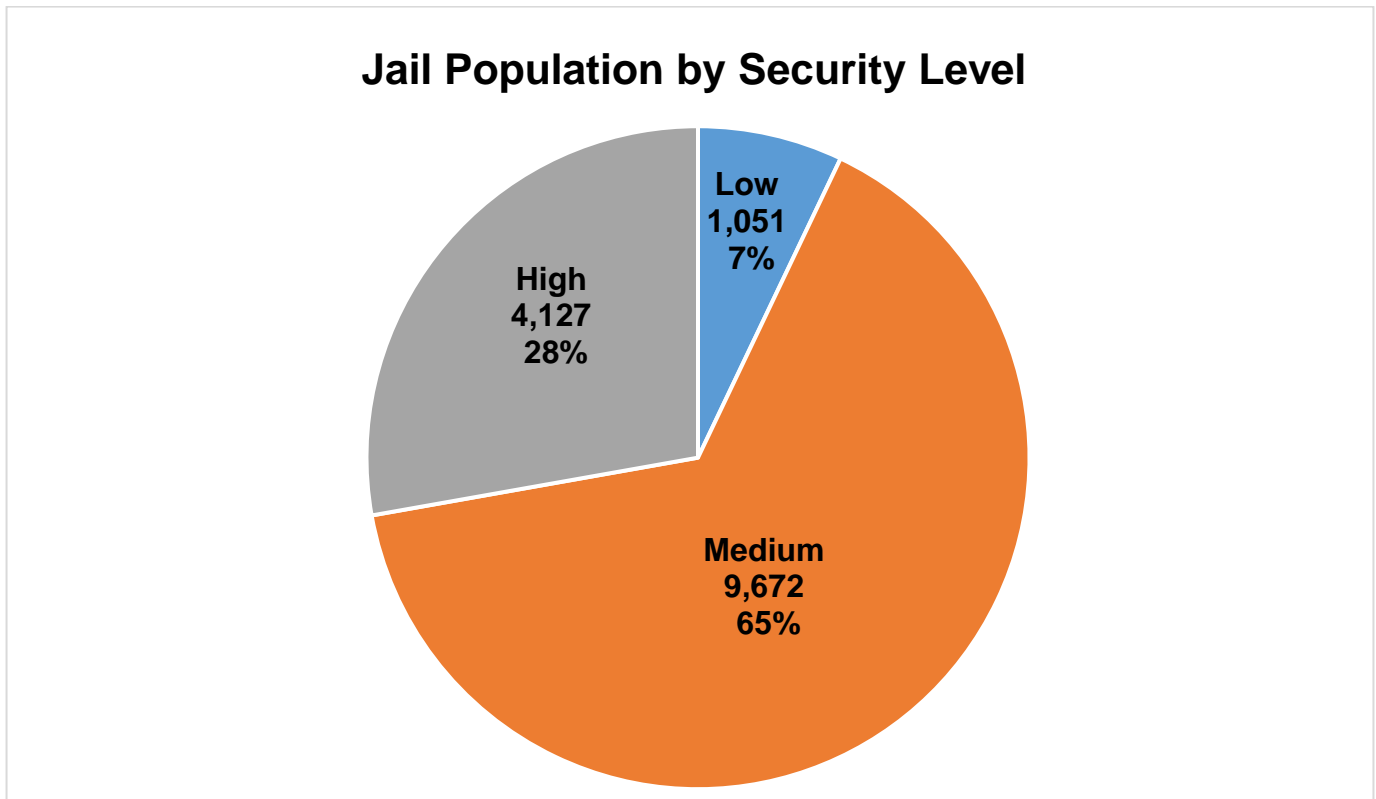
The Department utilizes the Northpointe Classification system to assign security levels to inmates. The security levels guide where an inmate will be housed based on their individual risk for in-custody misconduct. Lower security housing areas offer more programming and privileges to better prepare the inmates for release. Higher security housing is more restricted and therefore limited in what programs are offered, due to potential risk of serious misconduct and/or escape. All inmates are re-evaluated for reclassification of security level every 45 days.

Jail Population by Security Level				
Month	Low	Medium	High	Total
October	1,061	9,727	4,173	14,961
November	1,049	9,749	4,135	14,933
December	1,044	9,539	4,073	14,656
Average	1,051	9,672	4,127	14,850
Percent	7%	65%	28%	100%

*This chart only includes inmates housed in LASD Type II facilities, does not include inmates housed in alternative custody beds.

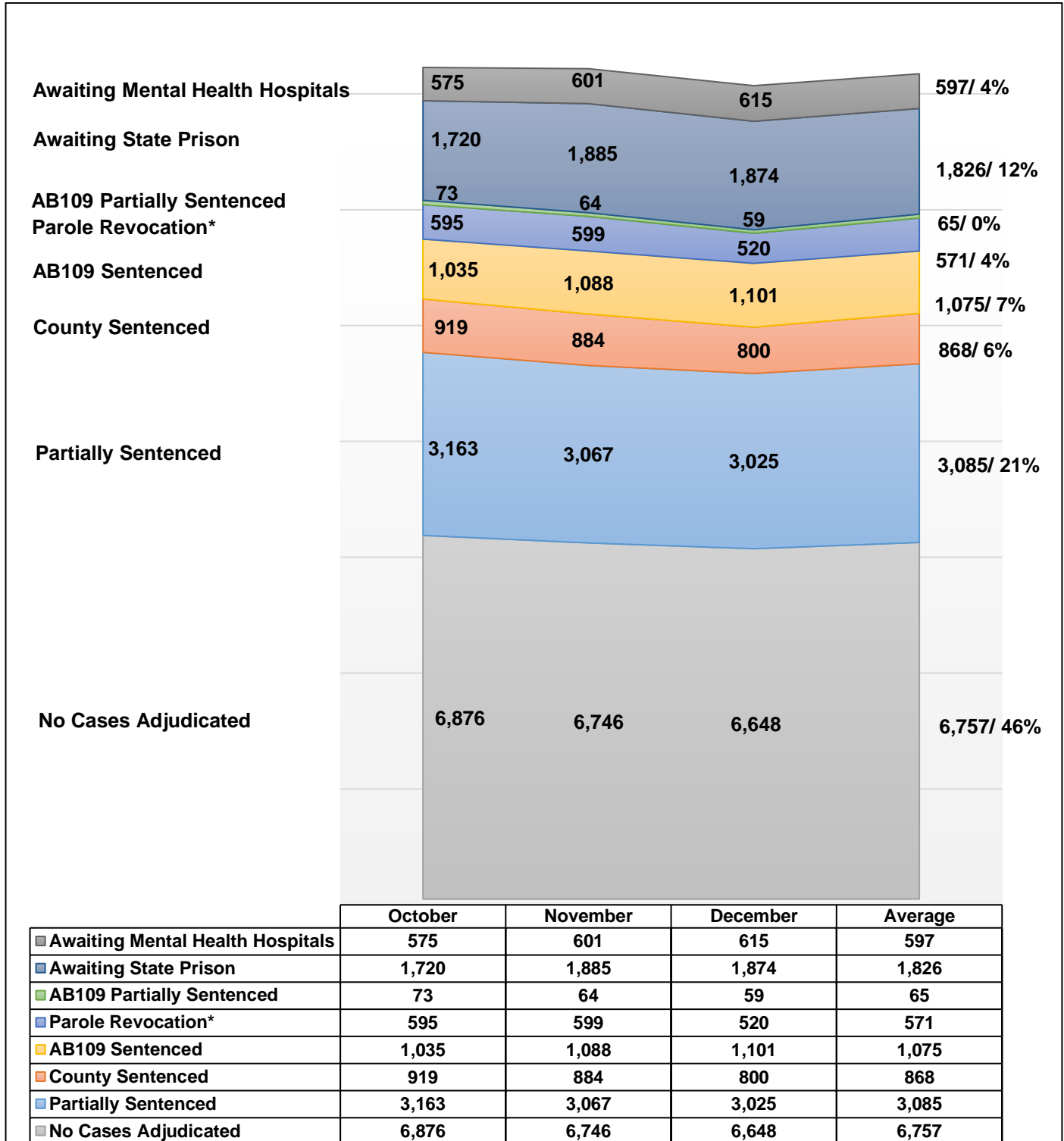
**Information contained is based on a snapshot of the daily inmate population purged every Tuesday.

The pie graph below depicts the average number of inmates housed this quarter by security level. The percentage is calculated to the Facility ADIP for this quarter (14,850).



INMATE POPULATION BREAKDOWN

The inmate population consists of various categories of inmates in broad groupings, including: no cases adjudicated, traditional county sentenced, AB109 sentenced, AB109 sentenced with additional charges, parole/revocation violators, and those awaiting transfer to state prison.



*Parole Revocation includes PRCS Revocation 3455, Flash Incarceration 3454 and Inmates with a 3056 hold.

**This report is a general overview of the inmate population. As it does not include all subgroups of the inmate population, it is not intended to be relied upon as a definitive representation of the entire inmate population.

INMATE POPULATION BREAKDOWN CONTINUED

- **AWAITING STATE PRISON**

During this quarter, an average of 1,826 inmates were awaiting transfer to state prison, some while pending trial on other cases.

- **AB109 PAROLE AND PROBATION VIOLATORS**

An average of 571 AB109 inmates were in custody for violating their parole or probation.

- **AB109 SENTENCED**

An average of 1,075 inmates were in custody, sentenced under AB109.

- **TRADITIONAL COUNTY SENTENCED INMATE POPULATION**

The average daily count for the TCS population was 868, approximately six percent (6%) of the inmate population.

- **NO CASES ADJUDICATED**

During this quarter, there were approximately 14,886 new bookings into County jail. Forty-six percent (46%) of the average daily inmate population (14,833) was comprised of inmates who did not have their cases adjudicated. These include inmates who have an open case and have not been sentenced by the courts, along with court returnees. Court returnees are inmates returning from state prisons or state hospitals to either face new charges, re-litigate past crimes, follow up on competency reports or for civil matters (witness, child custody, etc.).

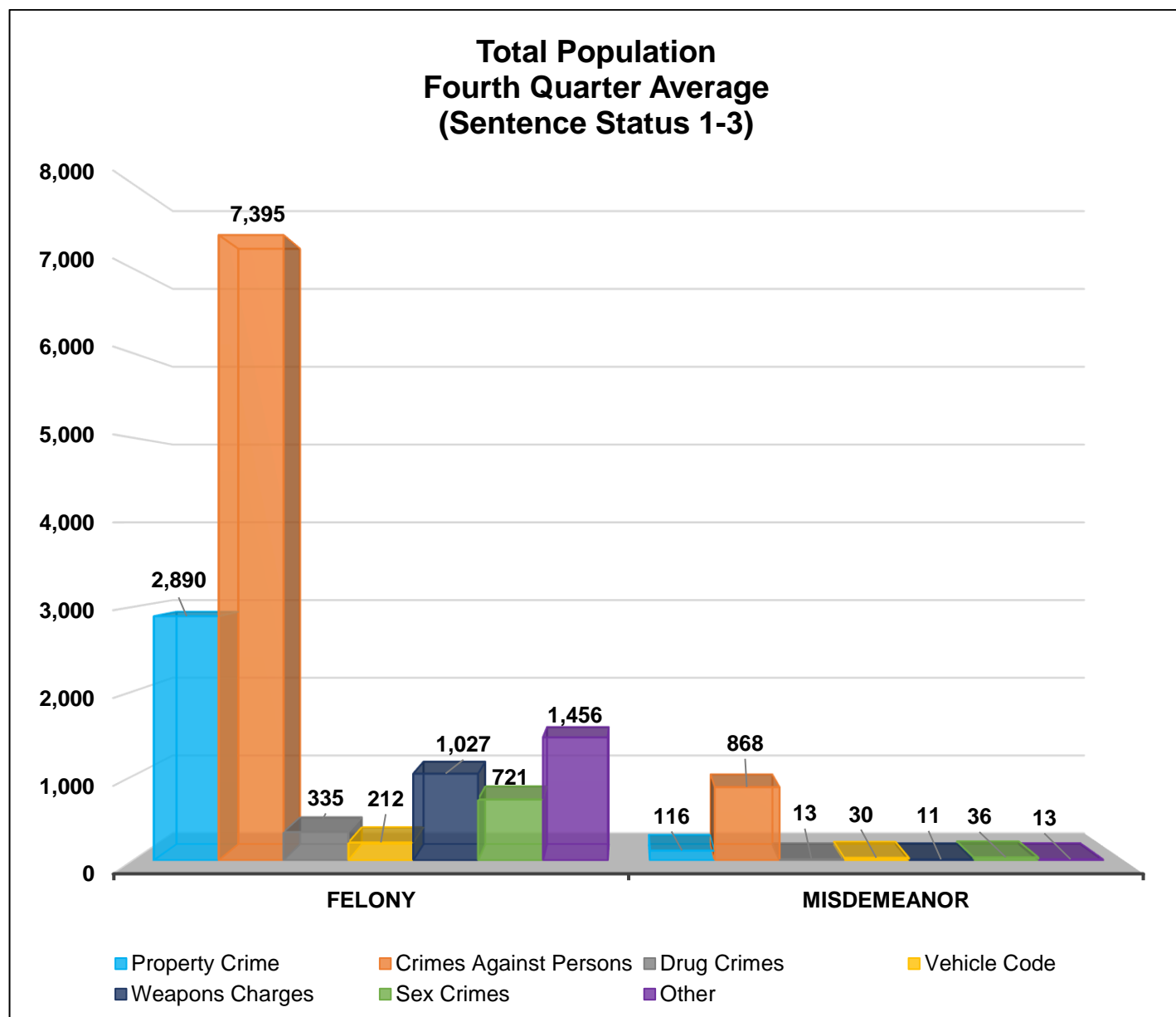
CRIME CLASSIFICATION STATISTICS

The chart below provides an average breakdown for the entire inmate population, both sentenced and un-sentenced, by arrest category.

Total Population (Sentence Status 1-3)

Arrest Category	Property Crimes	Crimes Against Persons	Drug Crimes	Vehicle Codes	Weapons Charges	Sex Crimes	Other	Total	% of the Population
Felony	2,890	7,395	335	212	1,027	721	1,456	14,036	93%
Misdemeanor	116	868	13	30	11	36	13	1,087	7%
Total	3,006	8,263	348	242	1,038	757	1,469	15,123	100%

**Information contained is based on a snapshot of the daily inmate population every Tuesday.*



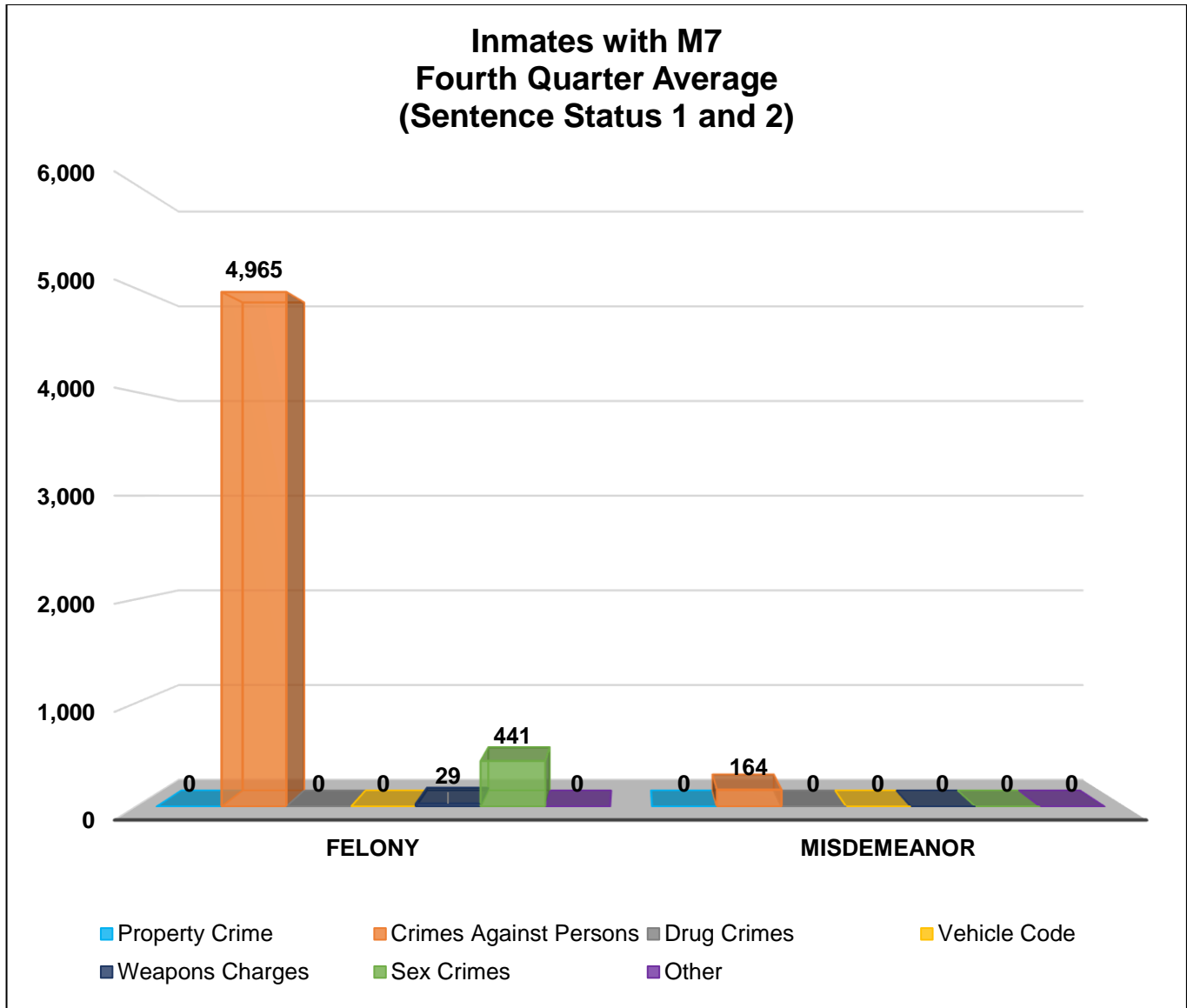
INMATES WITH ASSAULTIVE/VIOLENT CHARGES (M7)

The chart below provides a breakdown for the inmate population with M7 charges, sentence status one and two, and by arrest category.

Inmates with Assaultive/Violent Charges (M7) (Sentence Status 1 and 2)

Arrest Category	Property Crimes	Crimes Against Persons	Drug Crimes	Vehicle Codes	Weapons Charges	Sex Crimes	Other	Total	% of the Sentence Status 1 and 2 Population
Felony	0	4,965	0	0	29	441	0	5,435	97%
Misdemeanor	0	164	0	0	0	0	0	164	3%
Total	0	5,129	0	0	29	441	0	5,599	100%

**Information contained is based on a snapshot of the daily inmate population every Tuesday.*

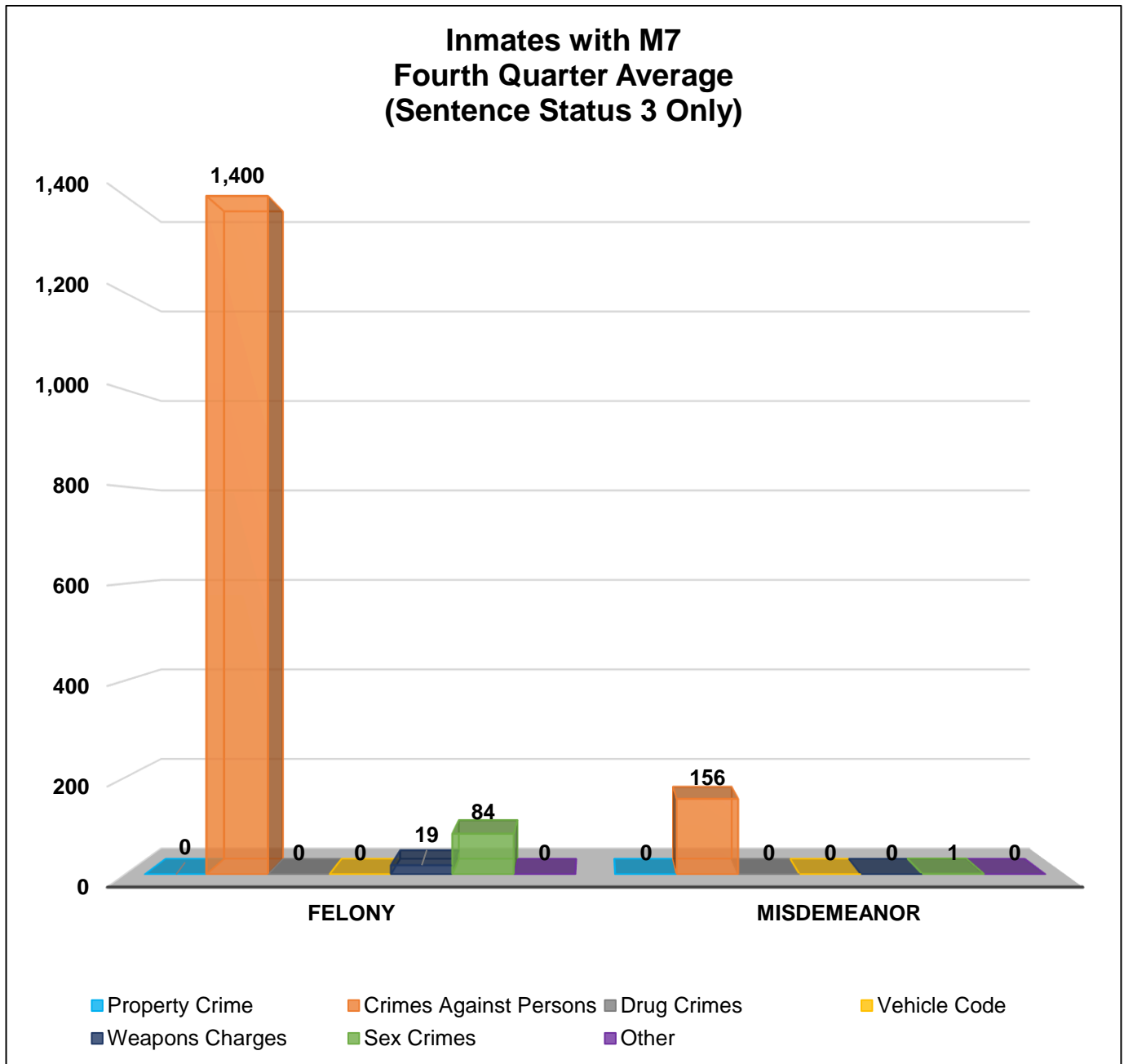


INMATES WITH ASSAULTIVE/VIOLENT CHARGES (M7) CONTINUED

Inmates with Assaultive/Violent Charges (M7) (Sentence Status 3 Only)

Arrest Category	Property Crime	Crimes Against Persons	Drug Crimes	Vehicle Code	Weapons Charges	Sex Crimes	Other	Total	% of the Sentenced Population
Felony	0	1,400	0	0	19	84	0	1,503	91%
Misdemeanor	0	156	0	0	0	1	0	157	9%
Total	0	1,556	0	0	19	85	0	1,660	100%

**Information contained is based on a snapshot of the daily inmate population every Tuesday.*



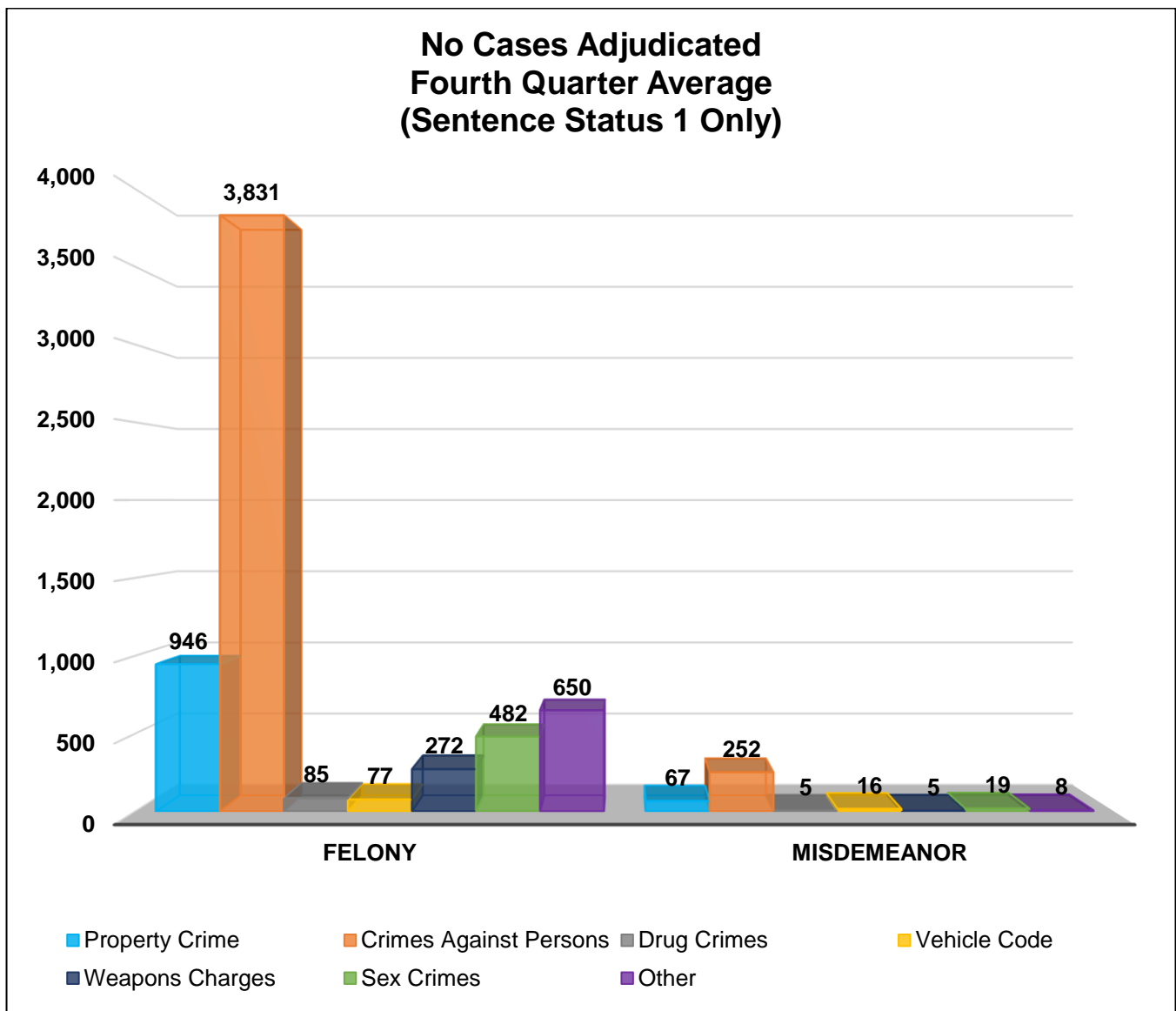
No CASES ADJUDICATED

The chart below provides a breakdown for the inmate population with an open case and have not been sentenced by the courts, along with court returnees.

No Cases Adjudicated (Sentence Status 1 only)

Arrest Category	Property Crime	Crimes Against Persons	Drug Crimes	Vehicle Code	Weapons Charges	Sex Crimes	Other	Total	% of the Sentence Status 1 Population
Felony	946	3,831	85	77	272	482	650	6,343	94%
Misdemeanor	67	252	5	16	5	19	8	372	6%
Total	1,013	4,083	90	93	277	501	658	6,715	100%

**Information contained is based on a snapshot of the daily inmate population every Tuesday.*



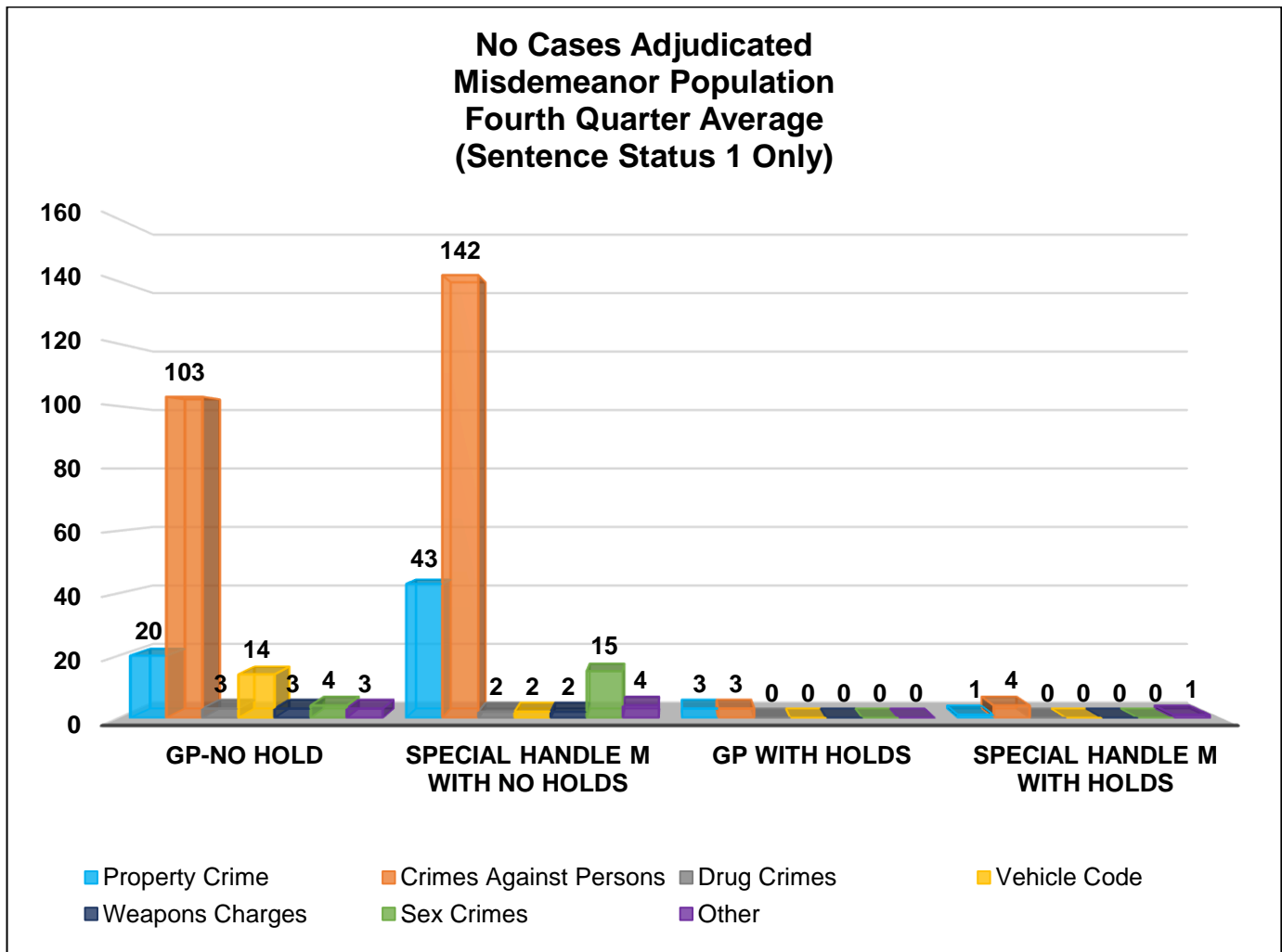
No CASES ADJUDICATED MISDEMEANOR POPULATION

The chart below provides a breakdown for the inmate population with open cases and have not been sentenced by the courts, along with court returnees, who are incarcerated for a misdemeanor and have not yet been convicted. "Holds" indicates the inmates are being held on a matter pending from an outside agency.

No Cases Adjudicated Misdemeanor Population (Sentence Status 1 only)

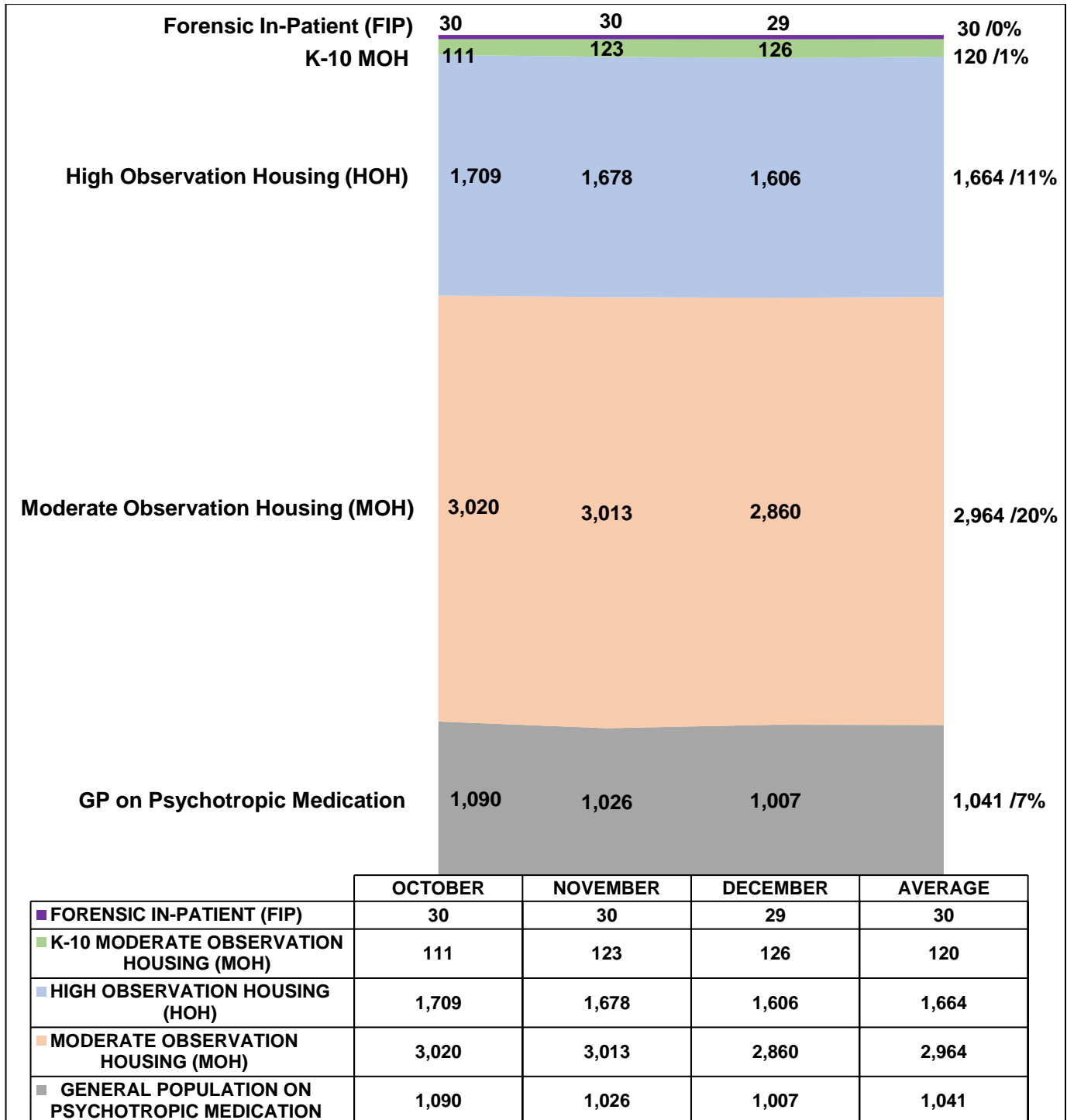
Arrest Category	Property Crimes	Crimes Against Persons	Drug Crimes	Vehicle Codes	Weapons Charges	Sex Crimes	Other	Total	% of the Sentence Status 1 Population
GP No Hold	20	103	3	14	3	4	3	150	40%
Special Handle M with No Holds	43	142	2	2	2	15	4	210	56%
GP with Holds	3	3	0	0	0	0	0	6	2%
Special Handle M with Holds	1	4	0	0	0	0	1	6	2%
Total	67	252	5	16	5	19	8	372	100%

**Information contained is based on a snapshot of the daily inmate population every Tuesday.*



MENTAL HEALTH INMATE POPULATION

This quarter, the overall inmate population was 14,833, of which the mental health population averaged 5,819 and accounted for 39 percent. Inmates identified with mental health needs requiring specialized moderate or high observation housing account for 32 percent of the overall population. The remaining 7 percent have been treated and continue to receive psychotropic medication while housed in general population.



*Information contained is based on a snapshot of the daily inmate population every Tuesday.

MISDEMEANOR INCOMPETENT TO STAND TRIAL (MIST)

County jail houses inmates who are awaiting trial for misdemeanor charges who have been found to be incompetent to stand trial. This quarter, the average number of inmates on MIST is 131.

Misdemeanor Incompetent to Stand Trial (MIST)									
October			November			December			Quarterly Average
Male	Female	Total	Male	Female	Total	Male	Female	Total	
91	35	126	108	41	149	70	47	117	131

Information contained is based on a snapshot of the daily inmate population every Tuesday.

AMERICANS WITH DISABILITIES ACT (ADA)

Americans with Disabilities Act housing is used to accommodate inmates with mobility limitations and/or physical disabilities. This quarter, the average number of inmates requiring ADA is 433 which is higher than last quarter's 414 total.

Americans With Disabilities Act (ADA)				
Disability	October	November	December	Quarterly Average
Seeing Impaired	12	9	8	10
Hearing Impaired	13	13	15	14
Wheelchair	239	238	231	236
Mobility Impaired	174	173	171	173
Monthly Total	438	433	425	433

Information contained is based on a snapshot of the daily inmate population every Tuesday.

MEDICAL HOUSING

Medical Outpatient/Specialty Housing (MOSH) is provided to inmates who require a level of medical treatment beyond that of stabilized medication distribution (pill call). The MOSH area in Men's Central Jail (MCJ) is also used to house inmates with mobility issues.

Additional Medical Housing				
Housing Area	October	November	December	Quarterly Average
Correctional Treatment Center (CTC)	105	103	104	104
Los Angeles County Medical Center (LCMC)	23	22	25	23
MCJ Medical/Clinic*	397	398	404	400
Monthly Total	525	523	533	527

Data are averages gathered from Facility Count Sheet every Tuesday.

**Includes some ADA housing.*

IN-CUSTODY PROGRAMS

LA COUNTY INMATE IN-CUSTODY PROGRAMS

The Los Angeles County jail offers several in-custody programs. They vary from in-custody work assignments, vocational job training, education, and life skill classes, as well as fire camp training and CDCR fire camp placement for AB109 inmates. Various programs awarded sentenced inmates additional time credits for their participation pursuant to the California Penal Code:

CREDIT EARNINGS

Program	Penal Code	Credit Earned	Type of Inmate
Sentenced GT/WT	4019 PC	Day-for-Day (1:1)	All Sentenced Inmates
Conservation	4019.1 PC	One and one half-for One (1.5:1)	All Sentenced Inmates
Fire Camp	4019.2 PC	Two-for-One (2:1)	AB109 Sentenced Inmates
Milestone*	4019.4 PC	Up to 6 weeks per year	All Sentenced Inmates

**Milestone credits are retroactively applied for unsentenced inmates.*

CONSERVATION WORK PROGRAM

The Conservation Work Program (CWP) requires inmates to complete their adjusted sentence while working in various job classifications, giving them the skills and work discipline necessary to increase their chances of success once released. Effective January 2015, all sentenced offenders, including TCS inmates are eligible to receive credits pursuant to Penal Code Section 4019.1. For this quarter, approximately 1,292 offenders (9% of the population) participated in CWP.

CONSERVATION WORK PROGRAM (CWP)				
Inmate Type	October	November	December	Quarterly Average
Participating Inmates	1,302	1,281	1,294	1,292

** Information contained is based on a snapshot of the daily inmate population every Tuesday.*

EDUCATION BASED INCARCERATION PROGRAMS

The Education Based Incarceration (EBI) Program uses traditional and nontraditional education which is designed to reduce incarceration by increasing the educational, civic, social, economic, and life skills of its participants. Offenders who are sentenced are eligible to receive credits pursuant to Penal Code 4019.4. For this quarter, 19 milestone credits were awarded.

The EBI school program was limited due to COVID-19.

FIRE CAMP TRAINING PROGRAM

Fire Camp Training and California Institute for Women (CIW) training are aligned under the CWP. This program is the first step of training before an inmate may participate in a state-facilitated Fire Camp program overseen by the CDCR. Offenders who are sentenced under AB109 are eligible to receive credits pursuant to Penal Code 4019.1. The average number of inmates enrolled in the Fire Camp training program for this quarter was 29.

FIRE CAMP TRAINING CAMP				
Housing Type	October	November	December	Quarterly Average
PDC Fire Camp Training (Men)	29	28	31	29
CIW Fire Camp Training (Women)	0	0	0	0
Monthly Total	29	28	31	29

CALIFORNIA DEPARTMENT OF CORRECTIONS AND REHABILITATION **FIRE CAMP PROGRAM**

Once an inmate passes all necessary requirements in the Fire Camp training program located at Pitchess Detention Center (PDC) East facility, they are transferred to one of five state-contracted fire camp sites where they will serve the remainder of their adjusted sentence. Offenders who are sentenced under AB109 are eligible to receive credits pursuant to Penal Code 4019.2. The average number of inmates assigned to CDCR Fire Camp for this quarter was 5.

CDCR FIRE CAMP				
Fire Camp Locations	October	November	December	Quarterly Average
Acton Fire Camp	1	2	1	1
Francisquito Fire Camp	1	1	1	1
Holton Fire Camp	1	3	2	2
Julius Klein Fire Camp	0	1	2	1
Malibu Women's Fire Camp	0	0	0	0
Monthly Total	3	7	6	5

IN-CUSTODY SUBSTANCE TREATMENT AND REENTRY TRANSITION

The jail-based Substance Treatment and Reentry Transition (START) treatment services provides substance use disorder (SUD) treatment services at the different jail facilities. Treatment services include screening, clinical assessment, group and individual counseling, case management services, medication-assisted treatment, re-entry planning and care coordination.

In-Custody START (CRDF)	October	November	December	Quarterly Average
Enrolled	14	25	24	21
Completed	9	3	10	7
In-Custody START (MCJ)	October	November	December	Quarterly Average
Enrolled	20	22	23	22
Completed	5	15	19	13
In-Custody START (PDC)	October	November	December	Quarterly Average
Enrolled	15	18	18	17
Completed	5	8	17	10
In-Custody START (TTCF)	October	November	December	Quarterly Average
Enrolled	0	20	13	11
Completed	0	1	1	1

ALTERNATIVES TO CUSTODY PROGRAMS

ALTERNATIVES TO CUSTODY PROGRAMS

The Community Transition Unit (CTU), the Community Based Alternatives to Custody (CBAC) unit, and the Compliance Team work together by utilizing a variety of alternatives to custody programming options in an effort to enhance an inmate's chances of success upon release. These programs are conducted in collaboration with local agencies including community and faith based organizations, Department of Mental Health (DMH), Department of Public Health (DPH) and other organizations. It is the Department's goal to program inmates from intake through re-entry into the community. With this approach, the Department hopes to increase public safety and reduce the rate of recidivism.

Supported by release planning overseen by the CTU, and in partnership with contracted services, inmates are provided re-entry assistance through linkages to services that are initiated while they are in-custody and continued upon release. Through the Alternatives to Custody (ATC) programs, qualifying inmates are afforded the opportunity to complete the remaining portion of their sentence in a community treatment program. Inmates who do not qualify for ATC due to security or other reasons are referred to community providers for re-entry assistance.

The ATC programs include:

SUBSTANCE TREATMENT AND REENTRY TRANSITION PROGRAM

The Substance Treatment and Reentry Transition (START) program is a DPH and Substance Abuse Prevention Control (SAPC) funded program that places eligible male and female inmates into residential Substance Use Disorder (SUD) treatment programs on electronic Global Positioning System monitoring as an ATC program.

FEMALE PROGRAMS

The female programs are funded through community grants. They work directly with various residential programs approved by the Department, but not affiliated with the START program, and offer treatment bed for inmates under the ATC program. Several programs cater to specific clientele who fit a specified demographic in regards to age and gender.

VETERAN'S ADMINISTRATION

The Veteran's Administration (VA) funds SUD residential treatment under the ATC program for inmates who are confirmed to be a veteran entitled to VA benefits. The treatment programs are approved by the VA and are vetted by personnel from PMB/CTU.

Program Quarterly Statistics	Enrolled	Completed	Returned to Custody	Absconded
START	9	12	1	0
Female Programs	0	0	0	0
Veterans	0	0	0	0

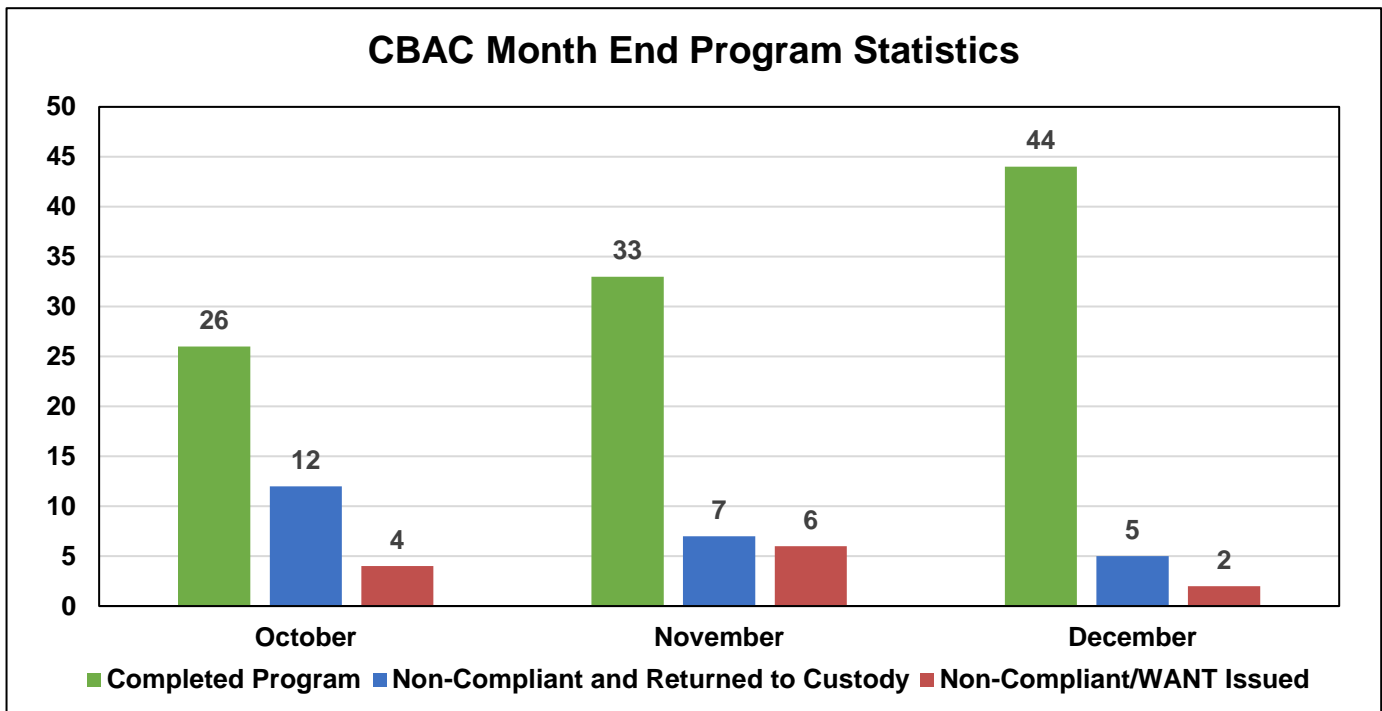
**Referrals and placements to the START community program are on hold pending execution of a new memorandum of agreement.*

COMMUNITY BASED ALTERNATIVES TO CUSTODY

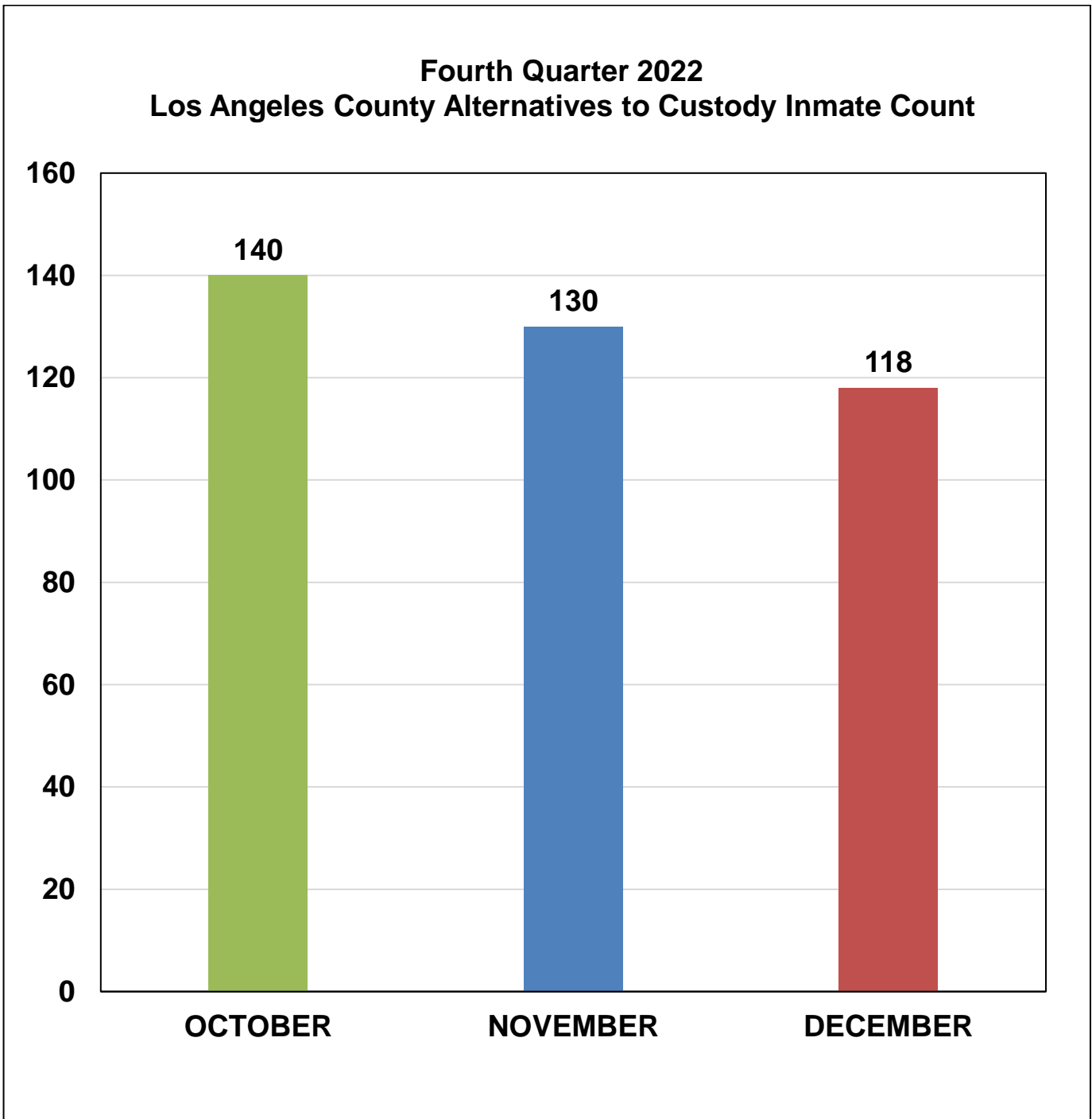
The Population Management Bureau's (PMB) Community Based Alternatives to Custody (CBAC) unit identifies qualified, low risk, sentenced offenders within the jail population to finish their remaining sentence in an out-of-custody alternative environment. Although these individuals are outside of traditional custody, they are still under the jurisdiction of the Department.

CBAC Monthly Placement									
Program	October			November			December		
	Male	Female	Total	Male	Female	Total	Male	Female	Total
Electronic Monitoring Program	9	2	11	5	2	7	7	3	10
Weekender Work Program	10	2	12	6	0	6	9	1	10
Work Release Program	20	2	22	14	0	14	11	1	12
Monthly Total	39	6	45	25	2	27	27	5	32

The graph below depicts the total number of offenders who successfully completed the remainder of their sentence on a CBAC program. It shows the number of offenders who failed to complete the program, and with the efforts of the PMB Compliance Unit, were returned back to finish their sentence. It also shows those who failed to complete the program and were not returned back to custody.



LA COUNTY ALTERNATIVES TO CUSTODY INMATE POPULATION



2022 Quarterly ATC Average Daily Inmate Population (ADIP)*
129

**Includes Community Based Alternatives to Custody (CBAC), Fire Camp and inmate station workers.*

RE-ENTRY ASSISTANCE

COMMUNITY RE-ENTRY AND RESOURCE CENTER

The information below represents recently released inmates and inquiries and/or contacts made by the general public who have been assisted with services at the Community Re-entry and Resource Center (CRRC) for the fourth quarter of 2022.

Inquiry Demographic Population	October	November	December	Total	Average
General Release	553	502	488	1,543	514
General Public	137	110	85	332	111
Alternatives to Custody Program	0	0	0	0	0
Coordinated Release	138	105	56	299	100
Work Release	0	0	0	0	0
Phone Referral	4	0	0	4	1
Monthly Total	832	717	629	2,178	726

Inquiry Demographic Gender	October	November	December	Total	Average
Male	446	475	489	1,410	470
Female	390	242	163	795	265
Monthly Total	836	717	652	2,205	735

Community Transition Unit (CTU) personnel visit the Inmate Reception Center release area to educate and remind inmates waiting to go home about services available at the CRRC. Walks of the release area are performed every 90 minutes.

	October	November	December	Total	Average
Number of 90 Minute Contact Walks	94	86	88	268	89
Number of Inmates Contacted	1,055	986	1,008	3,049	1,016
Number of Flyers Distributed	1,055	986	1,008	3,049	1,016

CTU COORDINATED RELEASES TO VARIOUS PROGRAMS

The final 90 days leading to an inmate's release from custody are the most critical in ensuring a successful transition from custody to Community Based Organization (CBO) treatment centers. During the time leading up to their release, inmates are interviewed several times by the CBO staff and members of the CTU to ensure that they are matched up with a suitable treatment provider.

The coordinated release process helps to create a trust between law enforcement, inmate participants and CBO. The CTU's goal is to provide a successful recovery and re-entry into the community and to ultimately decrease recidivism.

	October	November	December	Total	Average
Coordinated Release	60	66	59	185	62

CTU VITAL RECORDS

Through the Vital Records Program, Department staff members have been deputized by the County Registrar-Recorder to facilitate birth certificate applications for inmates born in Los Angeles County who have requested a certified copy. The fee of \$32 for certified copies of birth certificates is funded by the Inmate Welfare Fund.

All inmates in custody may apply for a replacement California Identification Card. The issued IDs are provided to the inmates upon their release. The inmates must still report to the California Department of Motor Vehicles (DMV) to obtain a driver's license following their release.

Records Processed	October	November	December	Quarterly Total	Quarterly Average
DMV - California Identification Card	134	119	40	293	98
Records – Birth Certificate	234	247	175	656	219
Total	368	366	215	949	317

Records Issued	October	November	December	Quarterly Total	Quarterly Average
DMV - California Identification Card	30	0	233	263	88
Records – Birth Certificate	173	213	157	543	181
Total	203	213	390	806	269