



---

# CUSTODY DIVISION POPULATION QUARTERLY REPORT

*January - March 2022*

Los Angeles County Sheriff's Department

---

*Alex Villanueva, Sheriff*

---

# TABLE OF CONTENTS

Executive Summary.....	3
1. Population Trends.....	4
Los Angeles County Inmate Population Graph	
Monthly Average Daily Inmate Population (ADIP) Trend	
Arrests, Bookings and Releases	
Release Practices	
Homeless and Veteran	
2. Facilities Overview.....	10
Rated Capacities - Board of State and Community Corrections	
Jail Housing Facilities	
Men's Central Jail (MCJ)	
Twin Towers Correctional Facility (TTCF)	
Century Regional Detention Facility (CRDF)	
Pitchess Detention Center (PDC) – East	
Pitchess Detention Center (PDC) – North	
Pitchess Detention Center (PDC) – South	
North County Correctional Facility (NCCF)	
3. Population Overview.....	17
Inmate Population Demographics	
Inmate Population Offender Age Groups	
Jail Population by Security Level	
Inmate Population Breakdown	
Crime Classification Statistics	
Inmates with M7 (Assaultive Charges)	
No Cases Adjudicated	
No Cases Adjudicated Misdemeanor Population	
Mental Health Inmate Population	
Misdemeanor Incompetent to Stand Trial (MIST)	
Americans with Disabilities Act (ADA)	
Medical Housing	
4. In-Custody Programs.....	30
Credit Earnings	
Conservation Work Program (CWP)	
Education Based Incarceration Program (EBI-Milestone)	
Fire Camp Training Program	
California Department of Corrections and Rehabilitation (CDCR) Fire Camp Program	
In-Custody Substance Treatment and Reentry Transition (START) Program	

5. Alternatives to Custody (ATC) Programs.....	34
Community Transition Unit (CTU)	
Substance Treatment and Reentry Transition (START)	
Female Programs	
Veteran’s Administration (VA)	
Community Based Alternatives to Custody (CBAC)	
LA County ATC Inmate Population Graph	
6. Re-Entry Assistance.....	38
Community Re-Entry and Resource Center (CRRC)	
CTU Coordinated Releases to Various Programs	
CTU Vital Records	

## **EXECUTIVE SUMMARY**

The Los Angeles County Sheriff's Department (Department) is committed to maintaining a secure and constitutional jail system. As part of this effort, a periodic report is essential to better understand and quantify population trends. This ***Custody Division Population Quarterly Report*** summarizes data collected during the first quarter of 2022 and is produced by the Population Management Bureau (PMB) Analysis Unit.

The Average Daily Inmate Population (ADIP) in the Los Angeles County (County) jail system during the first quarter of 2022 was 13,235. This is lower than the first quarter of 2021 average of 15,084.

Conditions of overcrowding remained this quarter and necessitated the continued use of percentage release to manage the inmate population. Inmates serving traditional county sentences completed 10 percent of their court ordered sentences. Inmates serving sentences for felony serious and/or violent offenses (M7 charges) served 100 percent of their sentences, minus any time credits earned. Inmates sentenced under 1170 PC (AB109) served 100 percent of their sentences, minus any time credits earned.

In March 2020, the Department implemented various measures to reduce the jail's inmate population in an effort to mitigate the spread of the COVID-19 virus among those incarcerated and staff. With the safety of the communities in mind and with an emphasis on those inmates that were medically vulnerable, the Department worked in a collaborative process with the District Attorney, Public Defender, Alternate Public Defender, Superior Court and Office of Diversion and Reentry, to reduce the overall inmate population. The number of new bookings increased slightly despite the misdemeanor bail acceptance limit was increased from \$25,000 to \$50,000, and later by the Statewide Emergency Bail modification (zero bail) in response to the COVID-19 pandemic. On June 20, 2020, the Statewide Emergency Bail schedule was rescinded; however, the Los Angeles Superior Court extended the zero bail schedule until further notice.

On March 23, 2020, the Superior Court of Los Angeles County implemented a new Pretrial Risk Evaluation Program (PREP) for all new arrests. As part of this pilot, all eligible arrestees are evaluated for pre-arraignment release by a Duty Magistrate Judge within hours of being booked. Despite the pilot being launched amid the COVID-19 pandemic, the pilot is off to a promising start.

The Traditional County Sentenced (TCS) population this quarter was approximately 769, higher than last quarter's total of 717. The number of inmates sentenced under 1170 PC was approximately 826, which is slightly higher than last quarter's total of 824.

The number of inmates sentenced to state prison had decreased since the California Department of Corrections and Rehabilitation (CDCR) resumed intake of state prisoners. The average number of inmates sentenced to state prison decreased from 1,536 last quarter to 1,435 this quarter, a seven percent (7%) decrease in inmates awaiting transfer.

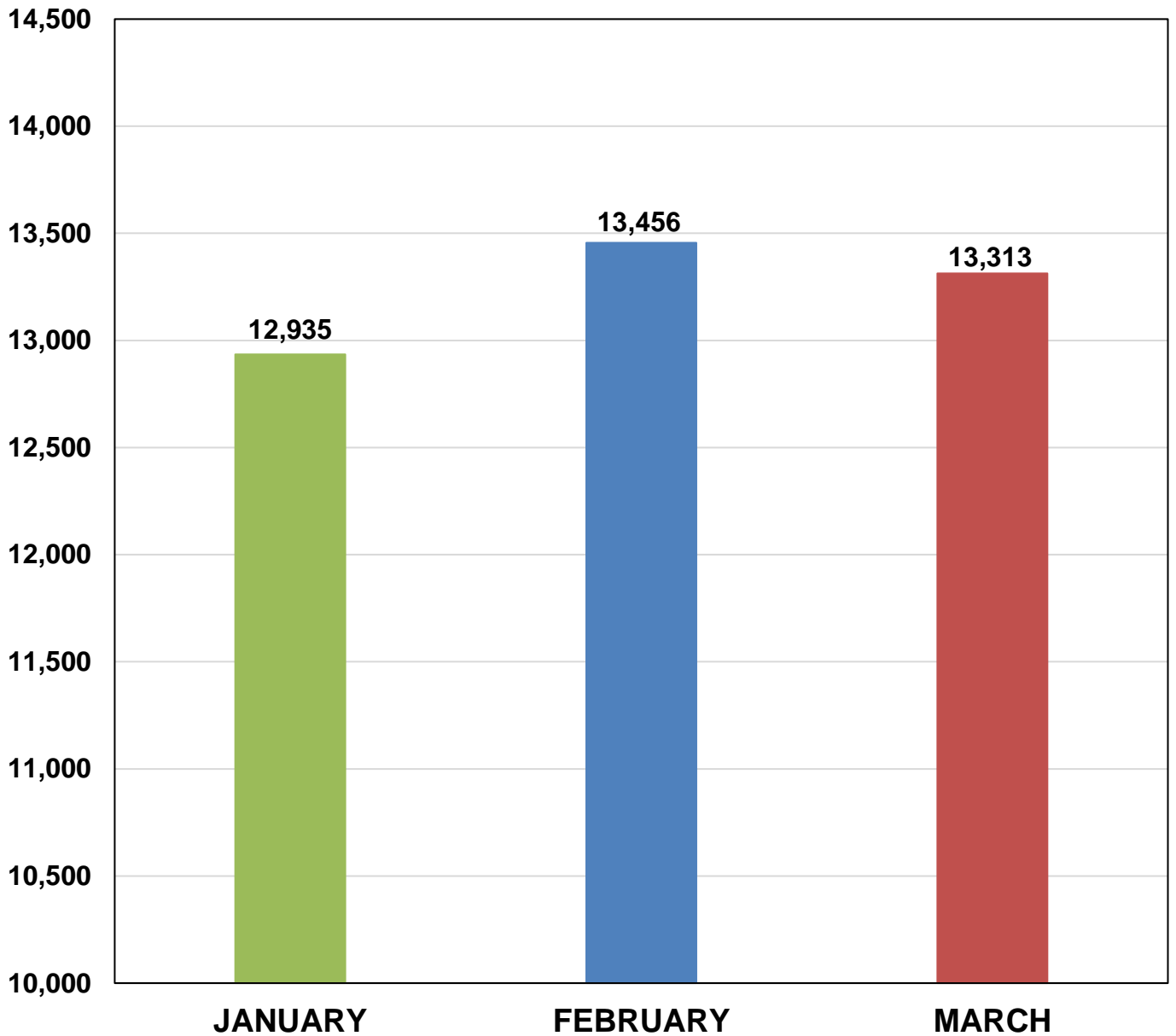
The mental health population decreased from 5,715 last quarter to 5,667 this quarter and comprised 43 percent of the total inmate population. During the first quarter of 2021, the mental health population was 6,100 and comprised 40 percent of the total inmate population.

*Information encompassed in this report/document depicts data related to a specific date and time. Data may differ based on numerous factors related to an inmate's status, disposition, facility, etc. Information may differ based on systems queried, archived information, date/time parameters or numerous other factors. Information in disparate reports should not be combined as data sets may be inconsistent in queries and responses.*

# POPULATION TRENDS

## LASD INMATE POPULATION

**First Quarter 2022  
Los Angeles County Overall Inmate Count**

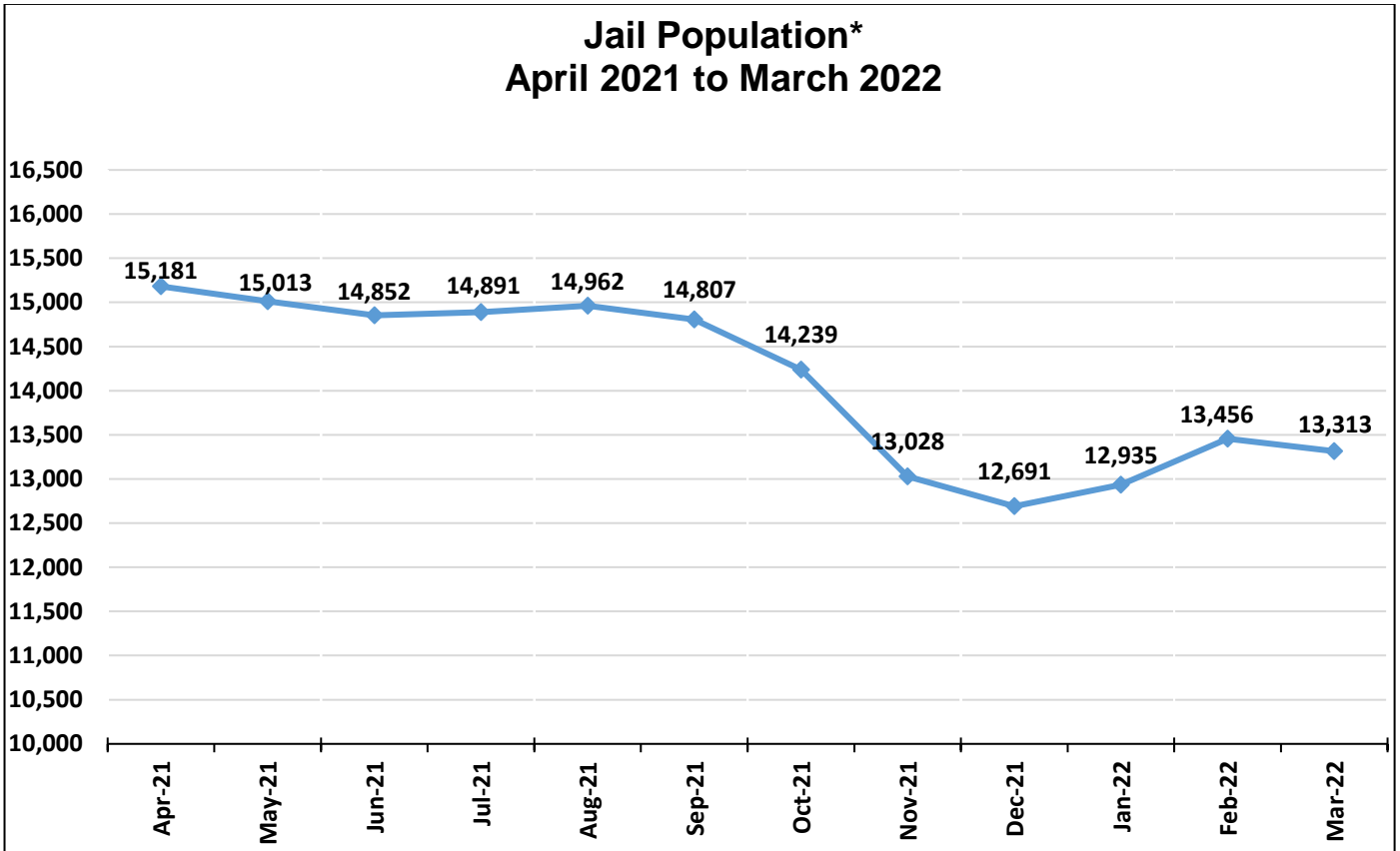


**2022 Quarterly Overall Division  
Average Daily Inmate Population (ADIP) \***

**13,235**

*\*Quarterly Division ADIP reflects all inmates processing into IRC, excludes ATC.*

## MONTHLY ADIP TREND



Yearly ADIP Comparison		
Year	ADIP	Notes
2011	15,014	(October - AB109 enacted)
2012	18,043	
2013	18,687	
2014	18,681	(November - Prop 47)
2015	17,049	
2016	16,613	
2017	17,024	
2018	16,910	
2019	17,070	
2020	14,212	(March - COVID-19)
2021	14,577	
2022	13,235	Data collected through March 2022

\*Excludes Alternatives to Custody

## FIRST QUARTER 2022 - ARREST AND BOOKING STATS

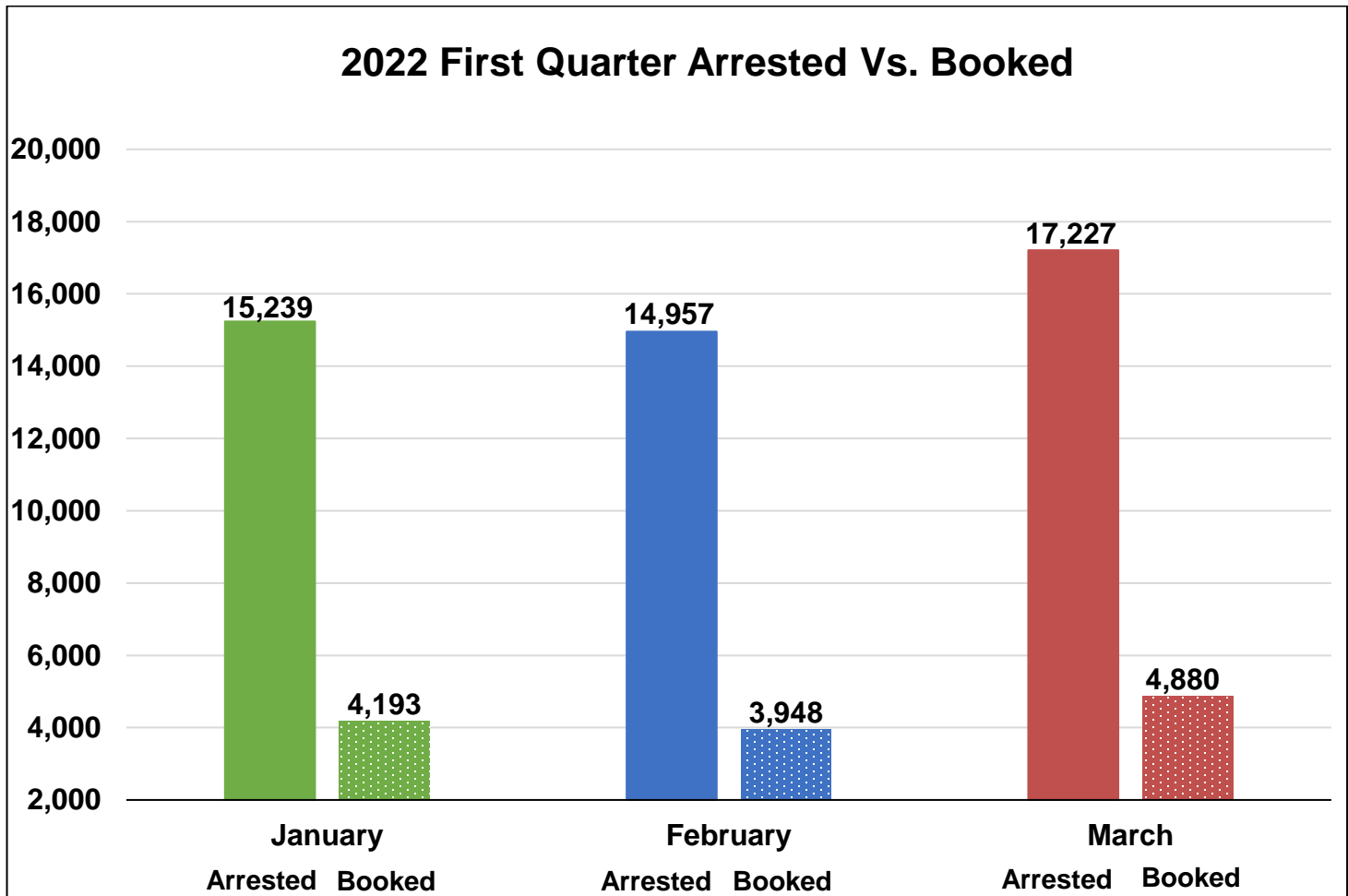
Arrest activity increased 5% to 47,423 versus last quarter (45,011). The number of inmates booked into the County jail this quarter increased 2% to 13,021 versus last quarter (12,745).

	January		February		March		Quarterly Total	Quarterly Average	Quarterly %
	Monthly Total	%	Monthly Total	%	Monthly Total	%			
<b>Felony</b>	7,747	51%	7,391	49%	8,540	50%	23,678	7,893	50%
<b>Misdemeanor</b>	7,429	49%	7,481	50%	8,613	50%	23,523	7,841	50%
<b>Other*</b>	63	0%	85	1%	74	0%	222	74	0%
<b>Total Arrested</b>	<b>15,239</b>		<b>14,957</b>		<b>17,227</b>		<b>47,423</b>	<b>15,808</b>	100%
<b>Total Booked into LA County</b>	<b>4,193</b>	<b>28%</b>	<b>3,948</b>	<b>26%</b>	<b>4,880</b>	<b>28%</b>	<b>13,021</b>	<b>4,340</b>	<b>27%</b>

\*Other includes child welfare, delinquent, infraction, and non-specific charges.

## FIRST QUARTER 2022 - ARRESTS VS. BOOKINGS

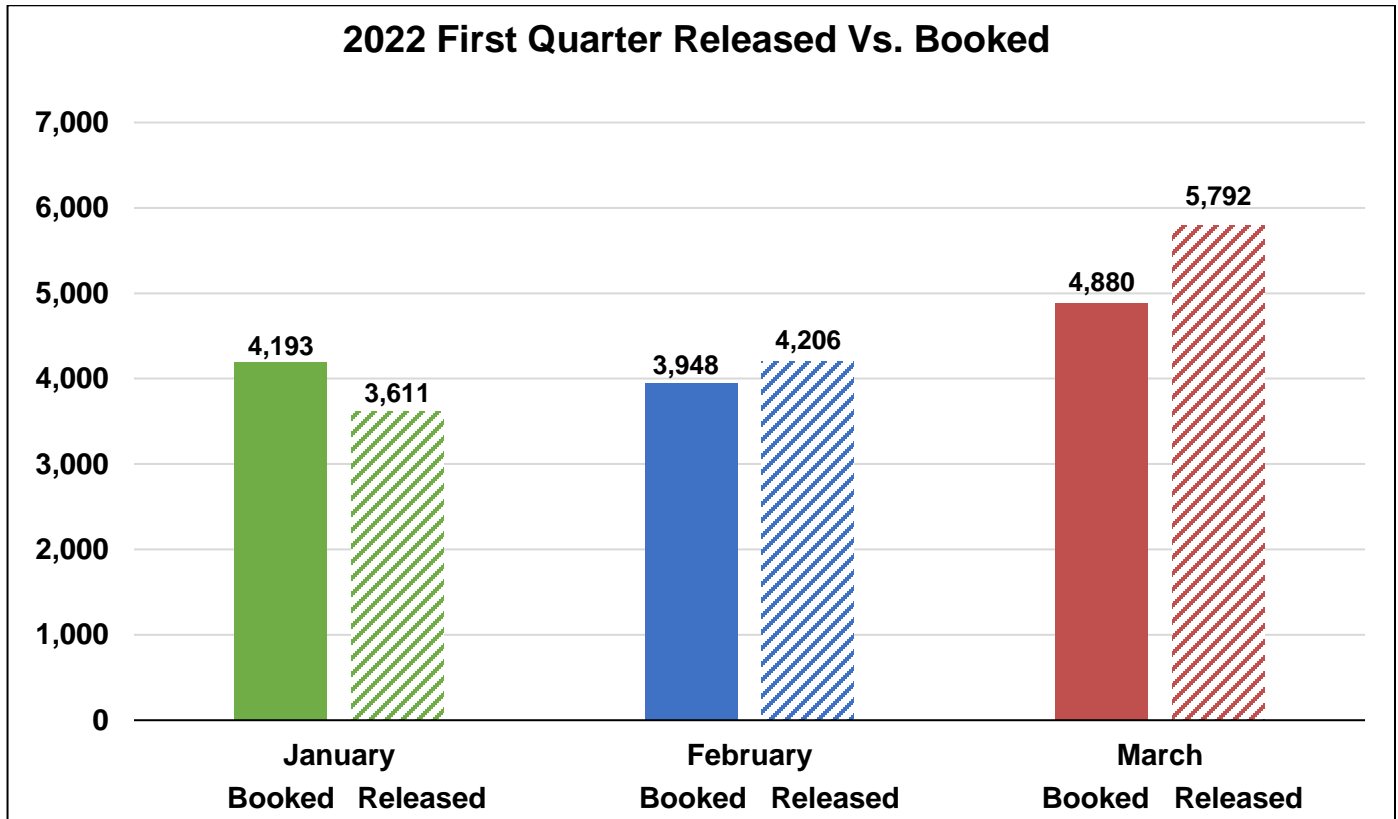
The graph below compares the total arrests and bookings for this quarter.





## FIRST QUARTER 2022 – BOOKINGS VS. RELEASES

The Department averaged approximately 4,536 releases this quarter. This is a 16% decrease compared to last quarter's average of 5,369 releases.



## COUNTY JAIL RELEASE PRACTICES

Due to conditions of overcrowding, traditional county sentenced inmates were subject to early release under the following conditions. In an effort to mitigate the spread of COVID-19, additional release measures were used. The M7 charges were modified, and additional releases were made in collaboration with other county agencies. Bookings were affected by bail changes and COVID-19. CDCR continued to accept state prisoners. Some of the state prisoners were released from county jail upon serving their time specified by CDCR or after resentencing.

Month	Release Criteria		M7 Release Criteria <sup>1</sup>		Short Sentence <sup>2</sup>	
	Male	Female	Felony	Misdemeanor	Male	Female
January	10%	10%	100%	100%	180 days	180 days
February	10%	10%	100%	100%	180 days	180 days
March	10%	10%	100%	100%	180 days	180 days

<sup>1</sup> Inmates classified as M7 have sentences for designated serious and/or violent offenses or have notoriety in the community, which requires their record jacket to go through extra security checks upon release from LASD's custody.

<sup>2</sup> Shorts are inmates sentenced to a term in county jail, which after all legal credits are awarded and the current jail percentage time is considered, are immediately released from LASD's custody after processing from court.

## HOMELESS

The chart below provides an average breakdown of the homeless inmate population who stated they were homeless by gender, major race, and age category. The homeless inmates comprised 25% of the total population.<sup>1</sup>

	January	February	March	Average
<b>Male</b>	2,713	2,826	2,803	<b>2,781</b>
<b>Female</b>	524	532	516	<b>524</b>
<b>Total</b>	<b>3,237</b>	<b>3,358</b>	<b>3,319</b>	<b>3,305</b>

	January	February	March	Average
<b>Hispanic</b>	1,674	1,757	1,742	<b>1,724</b>
<b>Black</b>	931	955	948	<b>945</b>
<b>White</b>	509	522	505	<b>512</b>
<b>Other</b>	123	124	124	<b>124</b>
<b>Total</b>	<b>3,237</b>	<b>3,358</b>	<b>3,319</b>	<b>3,305</b>

	January	February	March	Average
<b>18 to 25</b>	528	549	528	<b>535</b>
<b>26 to 34</b>	1,269	1,292	1,272	<b>1,278</b>
<b>35 to 39</b>	497	522	519	<b>513</b>
<b>40 to 44</b>	379	405	404	<b>396</b>
<b>45 &amp; Older</b>	564	590	596	<b>583</b>
<b>Total</b>	<b>3,237</b>	<b>3,358</b>	<b>3,319</b>	<b>3,305</b>

<sup>1</sup> Homeless data is collected from COMPAS based on a snapshot of the inmate population collected each business day. These are numbers based upon self-identification and have not been confirmed.

## VETERAN

The chart below provides an average breakdown of the veteran inmate population who stated they have served in the United States Military by gender, major race, and age category. The veteran inmates comprised 2% of the total population.<sup>2</sup>

	January	February	March	Average
<b>Male</b>	258	269	262	<b>263</b>
<b>Female</b>	13	13	14	<b>13</b>
<b>Total</b>	<b>271</b>	<b>282</b>	<b>276</b>	<b>276</b>

	January	February	March	Average
<b>Hispanic</b>	79	89	86	<b>85</b>
<b>Black</b>	91	94	88	<b>91</b>
<b>White</b>	86	86	90	<b>87</b>
<b>Other</b>	15	13	12	<b>13</b>
<b>Total</b>	<b>271</b>	<b>282</b>	<b>276</b>	<b>276</b>

	January	February	March	Average
<b>18 to 25</b>	11	11	11	<b>11</b>
<b>26 to 34</b>	50	57	56	<b>54</b>
<b>35 to 39</b>	42	48	45	<b>45</b>
<b>40 to 44</b>	46	45	43	<b>45</b>
<b>45 &amp; Older</b>	122	121	121	<b>121</b>
<b>Total</b>	<b>271</b>	<b>282</b>	<b>276</b>	<b>276</b>

<sup>2</sup> Veteran data is collected from COMPAS based on a snapshot of the inmate population collected each business day. These are numbers based upon self-identification and have not been confirmed by the Veterans Administration.

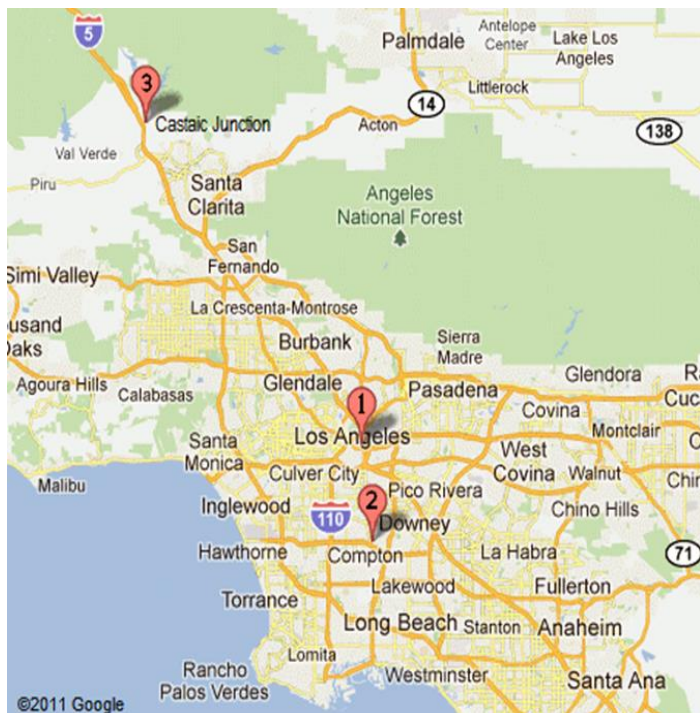
# **FACILITIES OVERVIEW**

## RATED CAPACITY

The Board of State and Community Corrections (BSCC) is a government body which recommends capacity limits for county jails. The BSCC conducts biennial jail inspections; The Department was rated in July 2020.

<b>Board of State and Community Corrections</b>				
<b>LASD Custody Facilities</b>	<b>BSCC Rated Capacity</b>	<b>Quarterly Facility ADIP</b>	<b>Above BSCC Rated Capacity</b>	<b>% Over BSCC Capacity</b>
Men's Central Jail	3,512	3,599	87	2%
Men's Central Jail Outpatient Clinic	Unrated	363	-	-
Twin Towers Correctional Facility	2,432	2,778	346	14%
Correctional Treatment Center	Unrated	113	-	-
Century Regional Detention Facility	1,708	1,328	-380	-22%
CRDF Reception Center	Unrated	1	-	-
Pitchess Detention Center – East	926	22	-904	-98%
Pitchess Detention Center – North	830	1,175	345	42%
Pitchess Detention Center – South	782	692	-90	-12%
North County Correctional Facility	2,214	2,938	724	33%
Inmate Reception Center	Unrated	204	-	-
LCMC Jail Wards	Unrated	19	-	-
<b>Total BSCC Rated Capacity*</b>	<b>Rated Quarterly Facility ADIP</b>	<b>Total Above BSCC Rated Capacity</b>	<b>Total % Over BSCC Capacity</b>	<b>Total % Over BSCC Capacity Excluding East Facility</b>
12,404	12,532	128	1%	9%

\*Statistical data gathered from *Board of State and Community Corrections Inspection Report 7/2020*



<b>LA County Jail Facilities</b>	
<b>1</b>	<ul style="list-style-type: none"> <li>➤ Men's Central Jail (MCJ)</li> <li>➤ Twin Towers Correctional Facility (TTCF)</li> <li>➤ Los Angeles County Medical Center (LCMC)</li> <li>➤ Correctional Treatment Center (CTC)</li> <li>➤ Inmate Reception Center (IRC)</li> </ul>
<b>2</b>	<ul style="list-style-type: none"> <li>➤ Century Regional Detention Facility (CRDF)</li> </ul>
<b>3</b>	<ul style="list-style-type: none"> <li>➤ Pitchess Detention Center (PDC)</li> <li>➤ PDC East Facility</li> <li>➤ PDC North Facility</li> <li>➤ PDC South Facility</li> <li>➤ North County Correctional Facility (NCCF)</li> </ul>

## JAIL HOUSING FACILITIES

<b>MEN'S CENTRAL JAIL TOTAL INMATE POPULATION 2022</b>					
<b>Security Level</b>	<b>January</b>	<b>February</b>	<b>March</b>	<b>Quarterly Average</b>	<b>% of Population</b>
Security Level Low 1-4	192	217	214	<b>207</b>	<b>5%</b>
Security Level Medium 5-7	2,592	2,692	2,557	<b>2,614</b>	<b>66%</b>
Security Level High 8-9	1,076	1,149	1,153	<b>1,126</b>	<b>29%</b>
<b>FACILITY TOTAL</b>	<b>3,860</b>	<b>4,058</b>	<b>3,924</b>	<b>3,947</b>	<b>100%</b>
<b>SUBPOPULATION HOUSED THROUGHOUT FACILITY<sup>1</sup></b>					
<b>Housing Type</b>	<b>January</b>	<b>February</b>	<b>March</b>	<b>Quarterly Average</b>	
Administratively Segregated (K-10) <sup>2</sup>	39	28	36	<b>34</b>	
Restrictive Housing (K-17, K-18, K-19, K-20) <sup>3</sup>	233	254	247	<b>245</b>	
Administratively Segregated (K-1) <sup>4</sup>	2	2	1	<b>2</b>	
Americans with Disabilities Act (ADA)	174	175	169	<b>173</b>	
Discipline	14	43	44	<b>34</b>	
General Population on Psychotropic Meds	781	841	785	<b>802</b>	
Inmate Workers	226	279	275	<b>260</b>	
LGBT (K-6G)	300	332	327	<b>320</b>	
Medical/Clinic	348	373	367	<b>363</b>	
Other (K-6T/B) <sup>5</sup>	208	252	251	<b>237</b>	
Pro-Per	74	71	70	<b>72</b>	
Mentally Ill – Moderate Observation / Service Area (MOH)	696	720	695	<b>704</b>	
HOPE Dorm	31	28	23	<b>27</b>	
Sex Crimes Against Children (K-6Y)	318	334	338	<b>330</b>	
Developmentally Disabled	8	6	6	<b>7</b>	

<sup>1</sup> Subpopulation housed throughout facility includes those who are classified with special housing needs and are included in the total inmate population. An inmate may belong to more than one subpopulation.

<sup>2</sup> K-10 Administratively segregated for various reasons including danger to self or others.

<sup>3</sup> K-17 Disruptive; K-18 Protective Custody; K-19 Major Disruptive; K-20 Highly Dangerous.

<sup>4</sup> K-1 Law Enforcement relation in custody.

<sup>5</sup> K-6T Contempt of court, K-6B threatened by others.

\*\*Statistical data are averages gathered from Facility Count Sheet every Tuesday.

<b>TWIN TOWERS CORRECTIONAL FACILITY TOTAL INMATE POPULATION 2022</b>					
<b>Security Level</b>	<b>January</b>	<b>February</b>	<b>March</b>	<b>Quarterly Average</b>	<b>% of Population</b>
Security Level Low 1-4	168	155	166	<b>163</b>	<b>6%</b>
Security Level Medium 5-7	1,866	1,871	1,864	<b>1,867</b>	<b>64%</b>
Security Level High 8-9	914	869	866	<b>883</b>	<b>30%</b>
<b>Facility Total</b>	<b>2,948</b>	<b>2,895</b>	<b>2,896</b>	<b>2,913</b>	<b>100%</b>
<b>SUBPOPULATION HOUSED THROUGHOUT FACILITY<sup>1</sup></b>					
<b>Housing Type</b>	<b>January</b>	<b>February</b>	<b>March</b>	<b>Quarterly Average</b>	
Administratively Segregated (K-10) <sup>2</sup>	65	47	45	<b>52</b>	
Restrictive Housing (K-17, K-18, K-19, K-20) <sup>3</sup>	113	116	115	<b>115</b>	
Administratively Segregated (K-1) <sup>4</sup>	12	13	13	<b>13</b>	
Administratively Segregated (K-6B) <sup>5</sup>	83	89	84	<b>85</b>	
Americans With Disabilities (ADA)	160	163	159	<b>161</b>	
Discipline	16	17	15	<b>16</b>	
Female Medical (CTC)	14	14	13	<b>14</b>	
General Population on Psychotropic Meds Security Level 1-4	10	9	8	<b>9</b>	
General Population on Psychotropic Meds Security Level 5-7	223	234	234	<b>230</b>	
General Population on Psychotropic Meds Security Level 8-9	126	119	115	<b>120</b>	
LGBT (K-6G)	53	42	46	<b>47</b>	
Medical (CTC)	106	108	93	<b>102</b>	
Mentally III – High Observation Housing (HOH)	1,010	976	980	<b>989</b>	
Mentally III – Moderate Observation / Service Area (MOH)	2,597	2,710	2,689	<b>2,665</b>	
Mentally III – Moderate Observation Housing (MOH) Sex Crimes Against Children (K-6 Y)	46	45	40	<b>44</b>	

<sup>1</sup> Subpopulation housed throughout facility includes those who are classified with special housing needs and are included in the total inmate population. An inmate may belong to more than one subpopulation.

<sup>2</sup> K-10: Administratively segregated for various reasons including danger to self or others.

<sup>3</sup> K-17: Disruptive; K-18: Protective Custody; K-19: Major Disruptive; K-20: Highly Dangerous.

<sup>4</sup> K-1 Law Enforcement relation in custody.

<sup>5</sup> K-6B: Administratively segregated are at risk of assault in GP housing.

\* Statistical data are averages gathered from Facility Count Sheet every Tuesday.

**CENTURY REGIONAL DETENTION FACILITY  
TOTAL INMATE POPULATION  
2022**

<b>Security Level</b>	<b>January</b>	<b>February</b>	<b>March</b>	<b>Quarterly Average</b>	<b>% of Population</b>
Security Level Low 1-4	156	155	142	<b>151</b>	<b>11%</b>
Security Level Medium 5-7	814	832	824	<b>823</b>	<b>62%</b>
Security Level High 8-9	364	386	350	<b>367</b>	<b>27%</b>
<b>Facility Total</b>	<b>1,334</b>	<b>1,373</b>	<b>1,316</b>	<b>1,341</b>	<b>100%</b>

**SUBPOPULATION HOUSED THROUGHOUT FACILITY<sup>1</sup>**

<b>Housing Type</b>	<b>January</b>	<b>February</b>	<b>March</b>	<b>Quarterly Average</b>
Administratively Segregated (K-10) <sup>2</sup>	7	8	7	<b>7</b>
Restrictive Housing (K-17, K-18, K-19, K-20) <sup>3</sup>	39	35	38	<b>37</b>
Americans With Disabilities Act (ADA)	16	16	17	<b>16</b>
K-8 Pregnant, Post-partum, Miscarriage or Terminated Pregnancy	17	16	14	<b>16</b>
Discipline	20	14	15	<b>16</b>
Inmate Workers	111	115	123	<b>116</b>
Medical/Clinic	11	6	10	<b>9</b>
Mentally Ill – High Observation Housing (HOH)	295	300	307	<b>301</b>
Mentally Ill – Moderate Observation Housing / Service Area (MOH)	344	365	335	<b>348</b>
Other (K-6B) <sup>4</sup>	4	5	5	<b>5</b>
Sex Crimes Against Children (K-6Y)	2	3	3	<b>3</b>

<sup>1</sup> Subpopulation housed throughout facility includes those who are classified with special housing needs and are included in the total inmate population. An inmate may belong to more than one subpopulation.

<sup>2</sup> K-10-Administratively segregated for various reasons including danger to self or others.

<sup>3</sup> K-17: Disruptive; K-18: Protective Custody; K-19: Major Disruptive; K-20: Highly Dangerous.

<sup>4</sup> K-6B: Administratively segregated are at risk of assault in GP housing.

\*Statistical data are averages gathered from Facility Count Sheet every Tuesday.

<b>PITCHESS DETENTION CENTER – EAST FACILITY (FIRE CAMP) TOTAL INMATE POPULATION 2022</b>					
<b>Security Level</b>	<b>January</b>	<b>February</b>	<b>March</b>	<b>Quarterly Average</b>	<b>% of Population</b>
Security Level Low 1-4	6	8	10	8	35%
Security Level Medium 5-7	14	16	14	15	65%
Security Level High 8-9	0	0	0	0	0%
<b>Facility Total</b>	<b>20</b>	<b>24</b>	<b>24</b>	<b>23</b>	<b>100%</b>

\*Statistical data are averages gathered from Facility Count Sheet every Tuesday.

<b>PITCHESS DETENTION CENTER – NORTH TOTAL INMATE POPULATION 2022</b>					
<b>Security Level</b>	<b>January</b>	<b>February</b>	<b>March</b>	<b>Quarterly Average</b>	<b>% of Population</b>
Security Level Low 1-4	39	42	47	43	4%
Security Level Medium 5-7	954	1,016	1,016	995	85%
Security Level High 8-9	124	120	148	131	11%
<b>Facility Total</b>	<b>1,117</b>	<b>1,178</b>	<b>1,211</b>	<b>1,169</b>	<b>100%</b>
<b>SUBPOPULATION HOUSED THROUGHOUT FACILITY<sup>1</sup></b>					
<b>HOUSING TYPE</b>	<b>January</b>	<b>February</b>	<b>March</b>	<b>Quarterly Average</b>	
Administratively Segregated Inmates (K-6B) <sup>2</sup>	60	52	75	62	
Discipline	10	6	10	9	
Inmate Workers	67	64	71	67	
Sex Crimes Against Children (K-6Y)	313	329	342	328	
Mentally Ill - Moderate Observation Housing (MOH)	167	321	351	280	

<sup>1</sup> Subpopulation housed throughout facility includes those who are classified with special housing needs and are included in the total inmate population. An inmate may belong to more than one subpopulation.

<sup>2</sup> K-6B inmates housed at PDC North Facility beginning March 2021.

\*Statistical data are averages gathered from Facility Count Sheet every Tuesday



<b>PITCHESS DETENTION CENTER - SOUTH TOTAL INMATE POPULATION 2022</b>					
<b>Security Level</b>	<b>January</b>	<b>February</b>	<b>March</b>	<b>Quarterly Average</b>	<b>% of Population</b>
Security Level Low 1-4	25	23	30	26	4%
Security Level Medium 5-7	620	682	682	661	96%
Security Level High 8-9	0	0	0	0	0%
<b>Facility Total</b>	<b>645</b>	<b>705</b>	<b>712</b>	<b>687</b>	<b>100%</b>
<b>SUBPOPULATION HOUSED THROUGHOUT FACILITY<sup>1</sup></b>					
<b>Housing Type</b>	<b>January</b>	<b>February</b>	<b>March</b>	<b>Quarterly Average</b>	
Inmate Workers	68	100	107	92	

<sup>1</sup> Subpopulation housed throughout facility includes those who are classified with special housing needs and are included in the total inmate population. An inmate may belong to more than one subpopulation.

\*Statistical data are averages gathered from Facility Count Sheet every Tuesday.

<b>NORTH COUNTY CORRECTIONAL FACILITY TOTAL INMATE POPULATION 2022</b>					
<b>Security Level</b>	<b>January</b>	<b>February</b>	<b>March</b>	<b>Quarterly Average</b>	<b>% of Population</b>
Security Level Low 1-4	136	141	139	139	5%
Security Level Medium 5-7	1,453	1,563	1,612	1,543	53%
Security Level High 8-9	1,162	1,253	1,255	1,223	42%
<b>Facility Total</b>	<b>2,751</b>	<b>2,957</b>	<b>3,006</b>	<b>2,905</b>	<b>100%</b>
<b>SUBPOPULATION HOUSED THROUGHOUT FACILITY<sup>1</sup></b>					
<b>Housing Type</b>	<b>January</b>	<b>February</b>	<b>March</b>	<b>Quarterly Average</b>	
Restrictive Housing (K-17, K-18, K-19, K-20) <sup>2</sup>	23	22	23	23	
Administratively Segregated (K6-B)	135	154	155	148	
Discipline	88	55	86	76	
Inmate Workers	361	448	469	426	
Veterans	15	14	11	13	

<sup>1</sup> Subpopulation housed throughout facility includes those who are classified with special housing needs and are included in the total inmate population. An inmate may belong to more than one subpopulation.

<sup>2</sup> K-17: Disruptive; K-18: Protective Custody; K-19: Major Disruptive; K-20: Highly Dangerous.

\*Statistical data are averages gathered from Facility Count Sheet every Tuesday.

# POPULATION OVERVIEW

## INMATE POPULATION DEMOGRAPHICS

Racial demographics this quarter indicate the three most populous racial groups within the County jail for both male and female offenders are Hispanic (55%), Black (29%), and White (13%).

Combined	January 2022		February 2022		March 2022		Quarterly Average	Quarterly %
	Race	Population	%	Population	%	Population		
Hispanic	6,978	55%	7,337	55%	7,310	55%	7,208	55%
Black	3,730	29%	3,860	29%	3,794	29%	3,795	29%
White	1,680	13%	1,740	13%	1,715	13%	1,711	13%
All Others	398	3%	409	3%	430	3%	412	3%
Chinese	37	0%	41	0%	39	0%	39	0%
Filipino	20	0%	22	0%	22	0%	21	0%
Pacific Islanders	13	0%	11	0%	11	0%	12	0%
Japanese	3	0%	3	0%	4	0%	3	0%
American Indian	13	0%	14	0%	13	0%	14	0%
<b>Total</b>	<b>12,872</b>	<b>100%</b>	<b>13,437</b>	<b>100%</b>	<b>13,338</b>	<b>100%</b>	<b>13,215</b>	<b>100%</b>

Male	January 2022		February 2022		March 2022		Quarterly Average	Quarterly %
	Race	Population	%	Population	%	Population		
Hispanic	6,346	55%	6,677	55%	6,681	56%	6,568	55%
Black	3,317	29%	3,447	29%	3,395	29%	3,387	29%
White	1,453	13%	1,497	13%	1,479	12%	1,476	13%
All Others	336	3%	349	3%	371	3%	352	3%
Chinese	34	0%	38	0%	37	0%	36	0%
Filipino	18	0%	20	0%	20	0%	19	0%
Pacific Islanders	10	0%	10	0%	10	0%	10	0%
Japanese	3	0%	3	0%	4	0%	3	0%
American Indian	12	0%	13	0%	13	0%	13	0%
<b>Total</b>	<b>11,529</b>	<b>100%</b>	<b>12,054</b>	<b>100%</b>	<b>12,010</b>	<b>100%</b>	<b>11,864</b>	<b>100%</b>

Female	January 2022		February 2022		March 2022		Quarterly Average	Quarterly %
	Race	Population	%	Population	%	Population		
Hispanic	632	47%	660	48%	629	47%	640	47%
Black	413	31%	413	30%	399	30%	408	30%
White	227	17%	243	18%	236	18%	235	18%
All Others	62	5%	60	4%	59	5%	60	5%
Chinese	3	0%	3	0%	2	0%	3	0%
Filipino	2	0%	2	0%	2	0%	2	0%
Pacific Islanders	3	0%	1	0%	1	0%	2	0%
Japanese	0	0%	0	0%	0	0%	0	0%
American Indian	1	0%	1	0%	0	0%	1	0%
<b>Total</b>	<b>1,343</b>	<b>100%</b>	<b>1,383</b>	<b>100%</b>	<b>1,328</b>	<b>100%</b>	<b>1,351</b>	<b>100%</b>

\*Statistical data are averages gathered from Custody Division Daily Briefing Report every Tuesday.

## INMATE POPULATION OFFENDER AGE GROUPS

The 26-34 year old cohort was the most frequently represented age group within the jail population this quarter, followed by the 18-25 and 45 & older.

Combined	January 2022	
Age Group	Population	%
18 to 25	2,352	18%
26 to 34	4,757	37%
35 to 39	1,919	15%
40 to 44	1,510	12%
45 & Older	2,334	18%
<b>Total</b>	<b>12,872</b>	<b>100%</b>

February 2022	
Population	%
2,421	18%
4,976	37%
2,025	15%
1,573	12%
2,442	18%
<b>13,437</b>	<b>100%</b>

March 2022	
Population	%
2,365	18%
4,920	37%
2,028	15%
1,582	12%
2,443	18%
<b>13,338</b>	<b>100%</b>

Quarterly Average	Quarterly %
2,378	18%
4,885	37%
1,991	15%
1,555	12%
2,406	18%
<b>13,215</b>	<b>100%</b>

Male	January 2022	
Age Group	Population	%
18 to 25	2,130	18%
26 to 34	4,213	36%
35 to 39	1,696	15%
40 to 44	1,356	12%
45 & Older	2,134	19%
<b>Total</b>	<b>11,529</b>	<b>100%</b>

February 2022	
Population	%
2,193	18%
4,421	37%
1,797	15%
1,404	11%
2,239	19%
<b>12,054</b>	<b>100%</b>

March 2022	
Population	%
2,138	18%
4,397	37%
1,812	15%
1,413	11%
2,250	19%
<b>12,010</b>	<b>100%</b>

Quarterly Average	Quarterly %
2,154	18%
4,344	37%
1,768	15%
1,391	12%
2,207	18%
<b>11,864</b>	<b>100%</b>

Female	January 2022	
Age Group	Population	%
18 to 25	222	17%
26 to 34	544	41%
35 to 39	223	16%
40 to 44	154	11%
45 & Older	200	15%
<b>Total</b>	<b>1,343</b>	<b>100%</b>

February 2022	
Population	%
228	17%
555	40%
228	16%
169	12%
203	15%
<b>1,383</b>	<b>100%</b>

March 2022	
Population	%
227	17%
523	40%
216	16%
169	12%
193	15%
<b>1,328</b>	<b>100%</b>

Quarterly Average	Quarterly %
225	17%
541	40%
222	16%
164	12%
199	15%
<b>1,351</b>	<b>100%</b>

\*Statistical data are averages gathered from Custody Division Daily Briefing Report every Tuesday.

## JAIL POPULATION BY SECURITY LEVEL

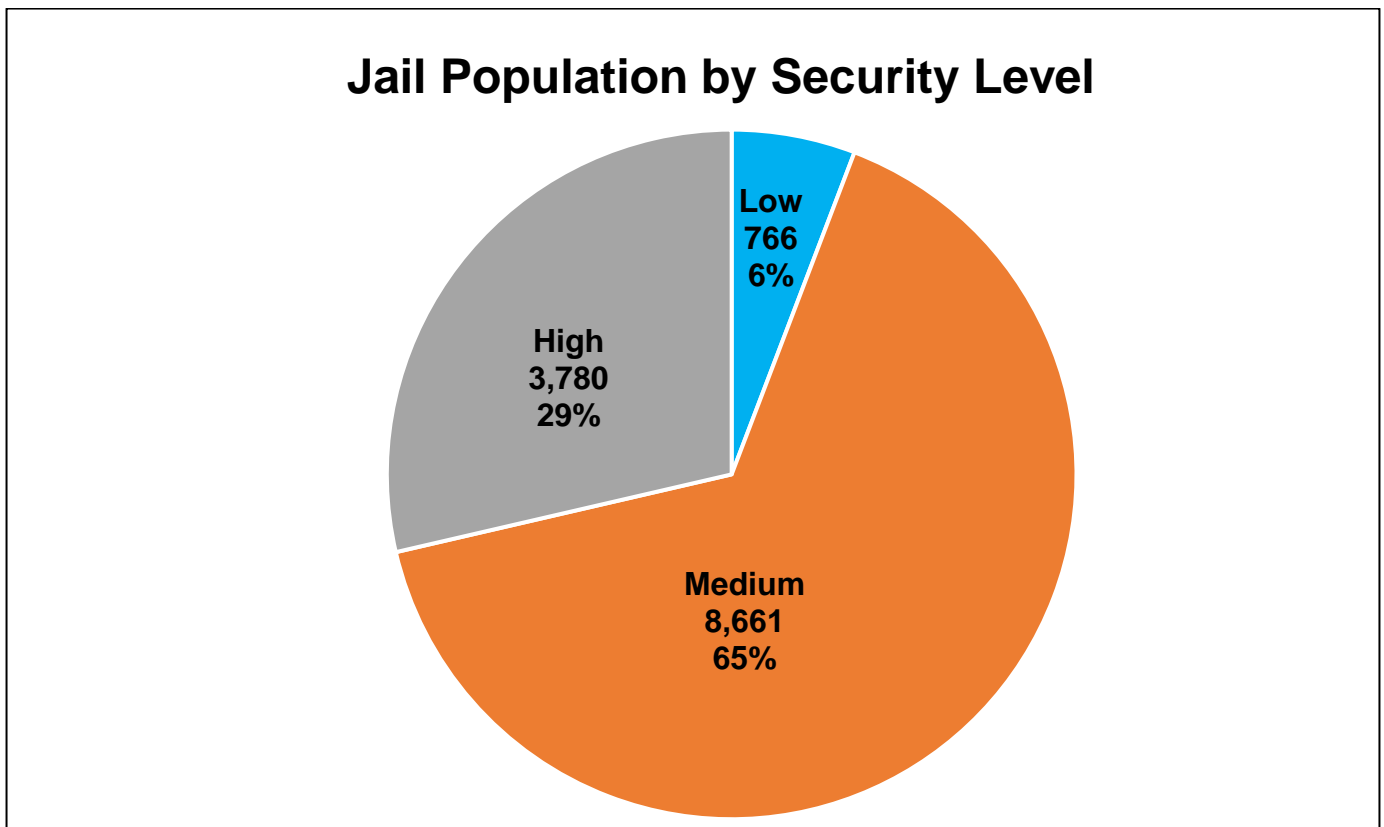
The Department utilizes the Northpointe Classification system to assign security levels to inmates. The security levels guide where an inmate will be housed based on their individual risk for in-custody misconduct. Lower security housing areas offer more programming and privileges to better prepare the inmates for release. Higher security housing is more restricted and therefore limited in what programs are offered, due to potential risk of serious misconduct and/or escape. All inmates are re-evaluated for reclassification of security level which occurs every 45 days.

<b>Jail Population by Security Level</b>				
<b>Month</b>	<b>Low</b>	<b>Medium</b>	<b>High</b>	<b>Total</b>
<b>January</b>	749	8,443	3,687	12,879
<b>February</b>	771	8,826	3,830	13,427
<b>March</b>	778	8,713	3,824	13,315
<b>Average</b>	<b>766</b>	<b>8,661</b>	<b>3,780</b>	<b>13,207</b>
<b>Percent</b>	<b>6%</b>	<b>65%</b>	<b>29%</b>	<b>100%</b>

\*This chart only includes inmates housed in LASD Type II facilities, does not include inmates housed in alternative custody beds.

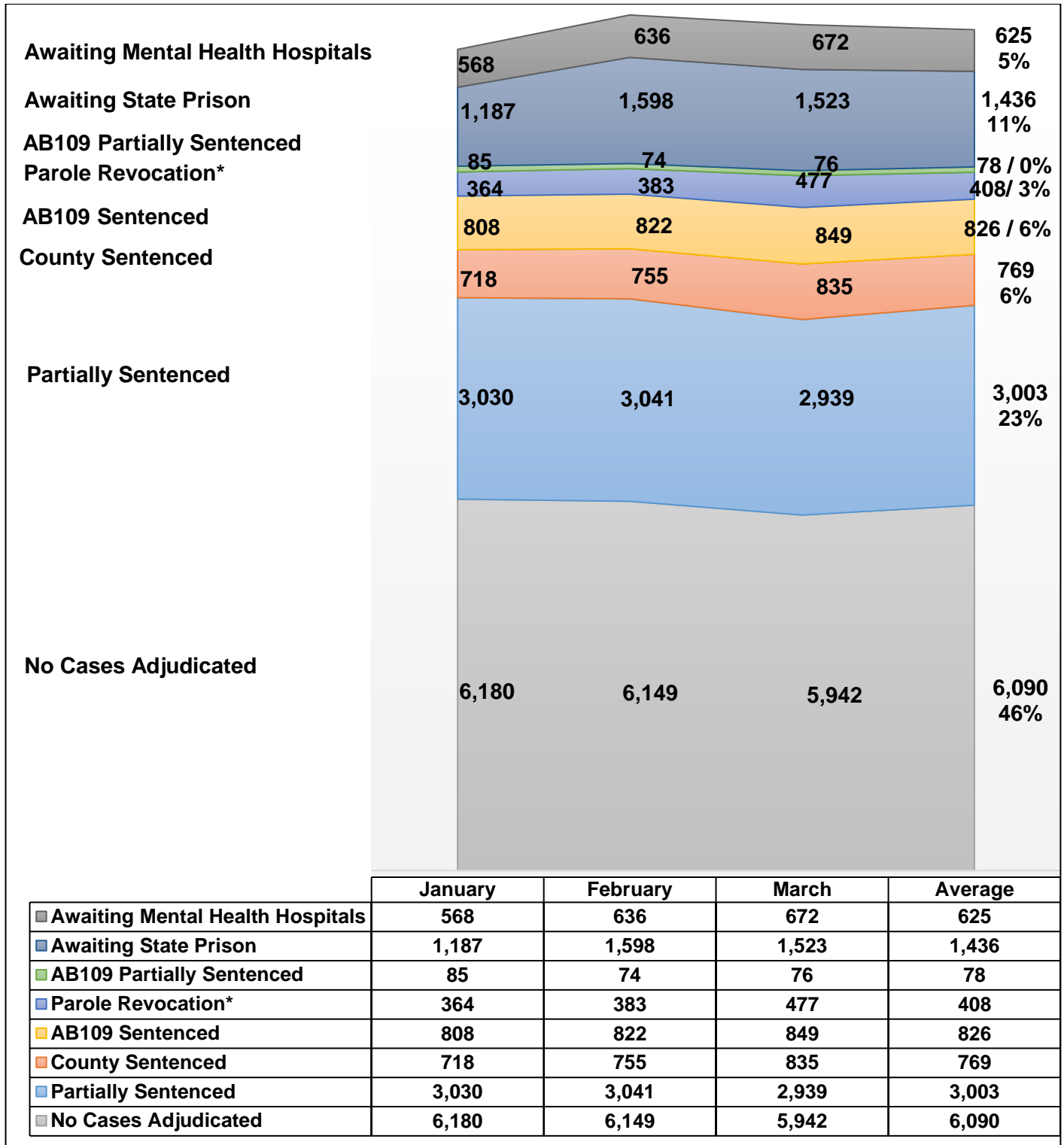
\*\*Information contained is based on a snapshot of the daily inmate population purged every Tuesday.

The pie graph below depicts the average number of inmates housed this quarter by security level. The percentage is calculated to the Facility ADIP for this quarter (13,207).



## INMATE POPULATION BREAKDOWN

The inmate population consists of various categories of inmates in broad groupings, including: no cases adjudicated, traditional county sentenced, AB109 sentenced, AB109 sentenced with additional charges, parole/revocation violators, and those awaiting transfer to state prison.



\*Parole Revocation includes PRCS Revocation 3455, Flash Incarceration 3454 and Inmates with a 3056 hold.

\*\*This report is a general overview of the inmate population. As it does not include all subgroups of the inmate population, it is not intended to be relied upon as a definitive representation of the entire inmate population.

## **INMATE POPULATION BREAKDOWN CONTINUED**

- **AWAITING STATE PRISON**

During this quarter, an average of 1,436 inmates were awaiting transfer to state prison, some while pending trial on other cases. Due to an executive order, CDCR had halted the intake and transfer of county jail inmates. Since then, CDCR has resumed intake of state prisoners resulting in a decrease in the population of inmates awaiting state prison. Some of the state prisoners were released from county jail upon serving their time specified by CDCR or after resentencing.

- **AB109 PAROLE AND PROBATION VIOLATORS**

An average of 408 AB109 inmates were in custody for violating their parole or probation.

- **AB109 SENTENCED**

An average of 826 inmates were in custody, sentenced under AB109.

- **TRADITIONAL COUNTY SENTENCED INMATE POPULATION**

The average daily count for the TCS population was 769, approximately six percent (6%) of the inmate population.

- **NO CASES ADJUDICATED**

During this quarter, there were approximately 13,021 new bookings into County jail. Forty-six percent (46%) of the average daily inmate population (13,235) was comprised of inmates who did not have their cases adjudicated. These include inmates who have an open case and have not been sentenced by the courts, along with court returnees. Court returnees are inmates returning from state prisons or state hospitals to either face new charges, re-litigate past crimes, follow up on competency reports or for civil matters (witness, child custody, etc.).

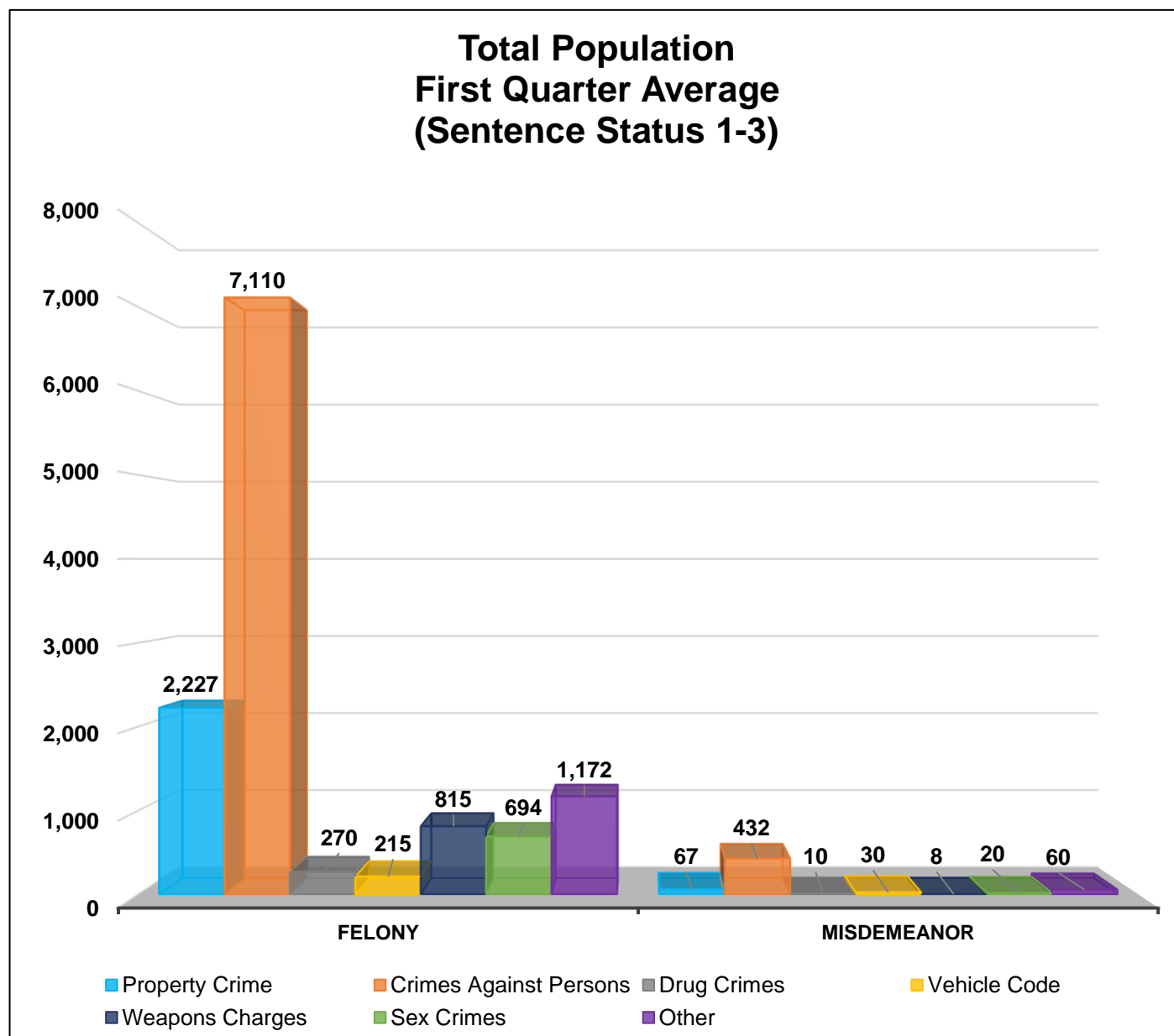
## CRIME CLASSIFICATION STATISTICS

The chart below provides an average breakdown for the entire inmate population, both sentenced and un-sentenced, by arrest category.

Total Population (Sentence Status 1-3)

Arrest Category	Property Crimes	Crimes Against Persons	Drug Crimes	Vehicle Codes	Weapons Charges	Sex Crimes	Other	Total	% of the Population
<b>Felony</b>	2,227	7,110	270	215	815	694	1,172	12,503	95%
<b>Misdemeanor</b>	67	432	10	30	8	20	60	627	5%
<b>Total</b>	2,294	7,542	280	245	823	714	1,232	13,130	100%

*\*Information contained is based on a snapshot of the daily inmate population every Tuesday.*





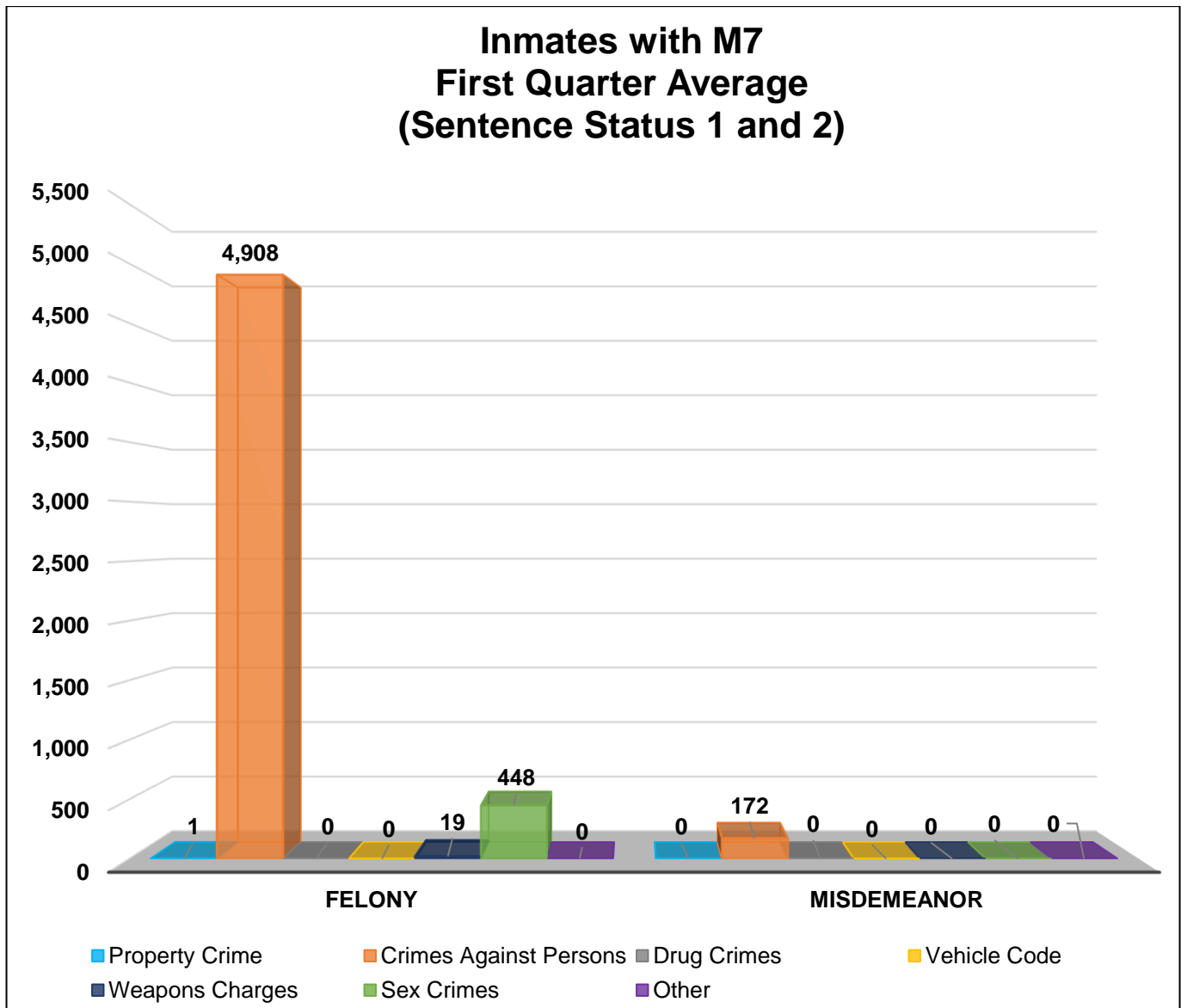
## INMATES WITH ASSAULTIVE/VIOLENT CHARGES (M7)

The chart below provides a breakdown for the inmate population with M7 charges, sentence status one and two, and by arrest category.

Inmates with Assaultive/Violent Charges (M7) (Sentence Status 1 and 2)

Arrest Category	Property Crimes	Crimes Against Persons	Drug Crimes	Vehicle Codes	Weapons Charges	Sex Crimes	Other	Total	% of the Sentence Status 1 and 2 Population
Felony	1	4,908	0	0	19	448	0	5,376	97%
Misdemeanor	0	172	0	0	0	0	0	172	3%
Total	1	5,080	0	0	19	448	0	5,548	100%

*\*Information contained is based on a snapshot of the daily inmate population every Tuesday.*

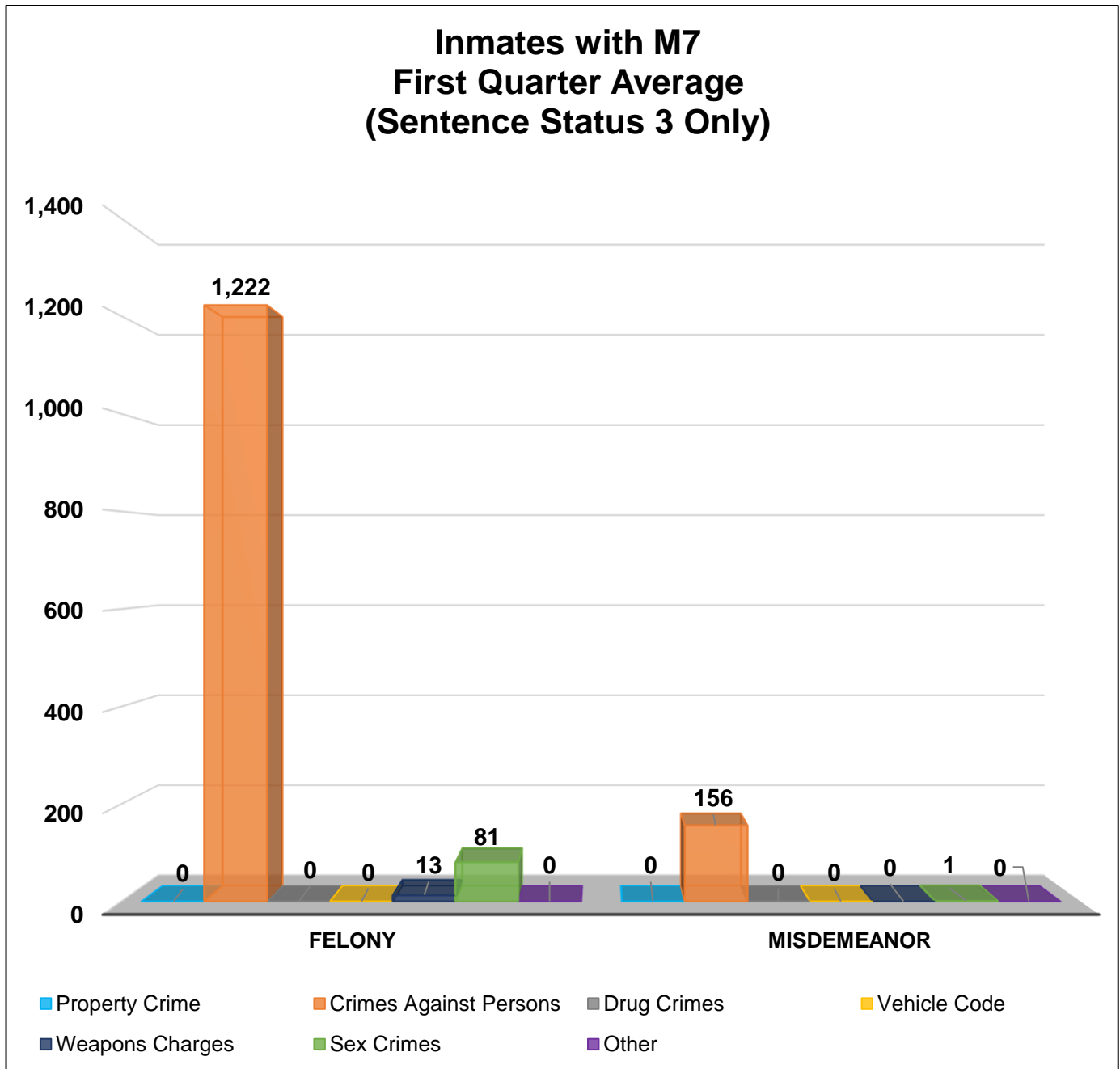


## INMATES WITH ASSAULTIVE/VIOLENT CHARGES (M7) CONTINUED

Inmates with Assaultive/Violent Charges (M7) (Sentence Status 3 Only)

Arrest Category	Property Crime	Crimes Against Persons	Drug Crimes	Vehicle Code	Weapons Charges	Sex Crimes	Other	Total	% of the Sentenced Population
Felony	0	1,222	0	0	13	81	0	1,316	89%
Misdemeanor	0	156	0	0	0	1	0	157	11%
Total	0	1,378	0	0	13	82	0	1,473	100%

*\*Information contained is based on a snapshot of the daily inmate population every Tuesday.*



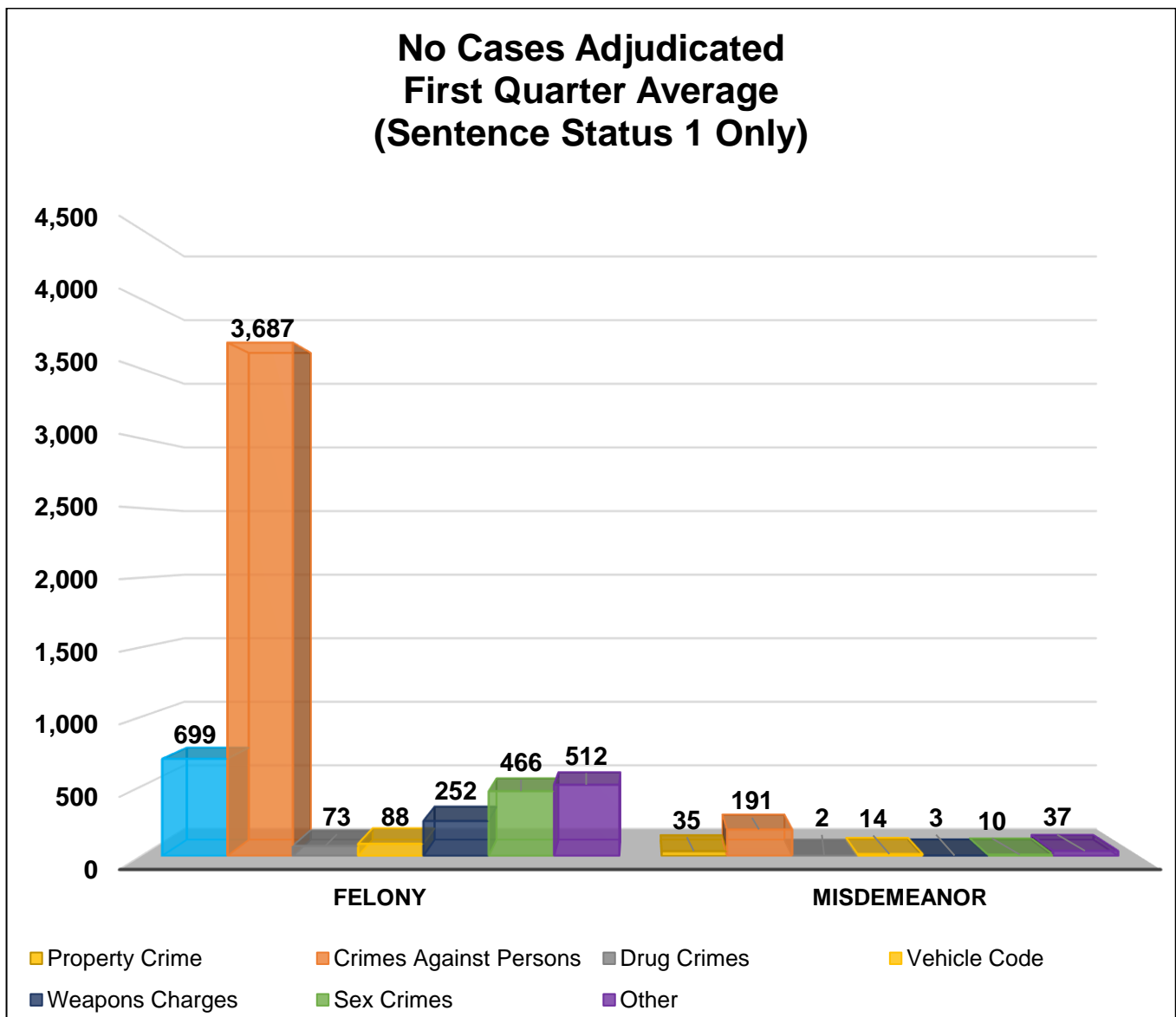
## No CASES ADJUDICATED

The chart below provides a breakdown for the inmate population with an open case and have not been sentenced by the courts, along with court returnees.

No Cases Adjudicated (Sentence Status 1 only)

Arrest Category	Property Crime	Crimes Against Persons	Drug Crimes	Vehicle Code	Weapons Charges	Sex Crimes	Other	Total	% of the Sentence Status 1 Population
Felony	699	3,687	73	88	252	466	512	5,777	95%
Misdemeanor	35	191	2	14	3	10	37	292	5%
Total	734	3,878	75	102	255	476	549	6,069	100%

*\*Information contained is based on a snapshot of the daily inmate population every Tuesday.*



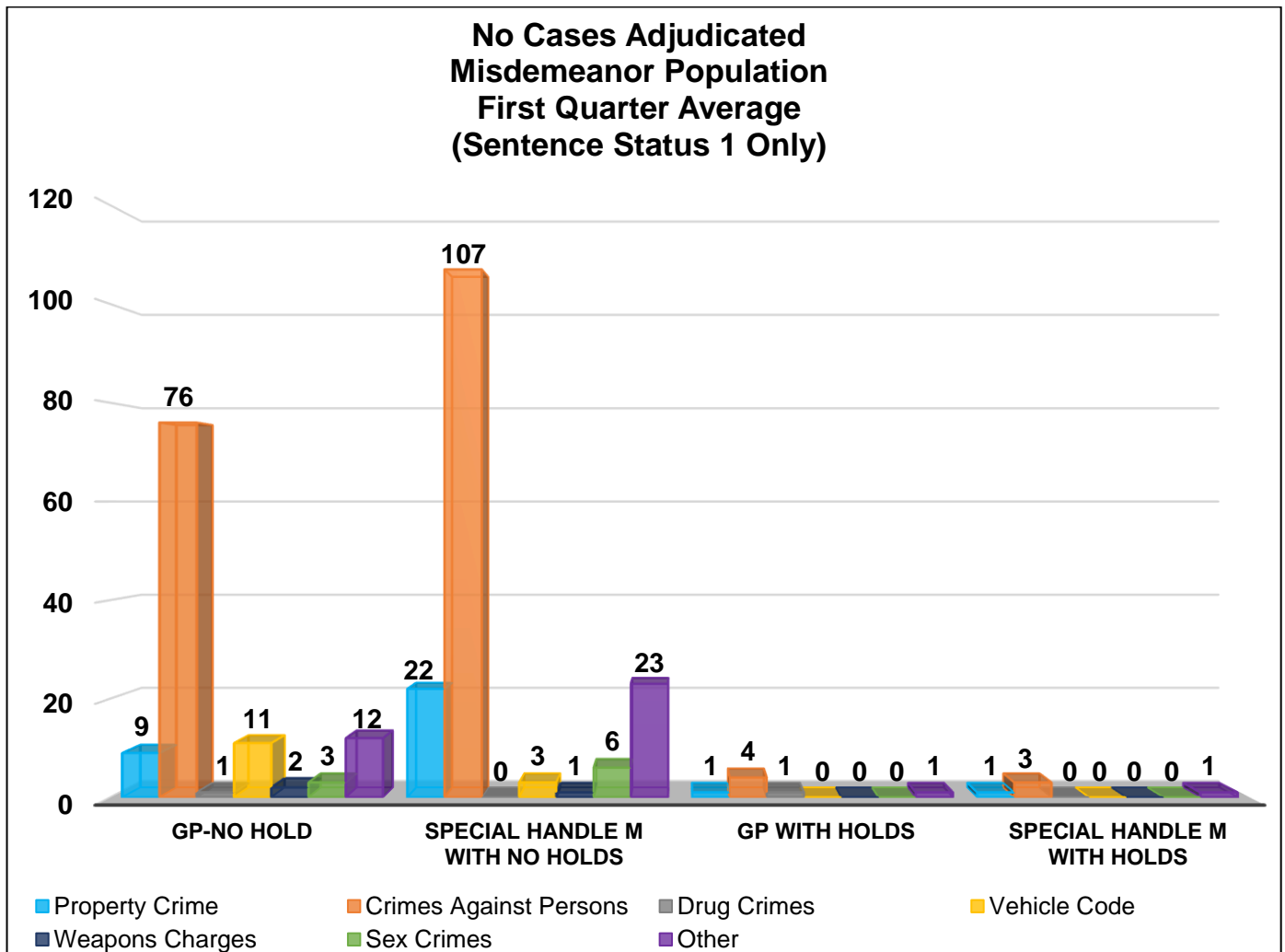
## No Cases Adjudicated Misdemeanor Population

The chart below provides a breakdown for the inmate population with open cases and have not been sentenced by the courts, along with court returnees, who are incarcerated for a misdemeanor and have not yet been convicted. "Holds" indicates the inmates are being held on a matter pending from an outside agency.

No Cases Adjudicated Misdemeanor Population (Sentence Status 1 only)

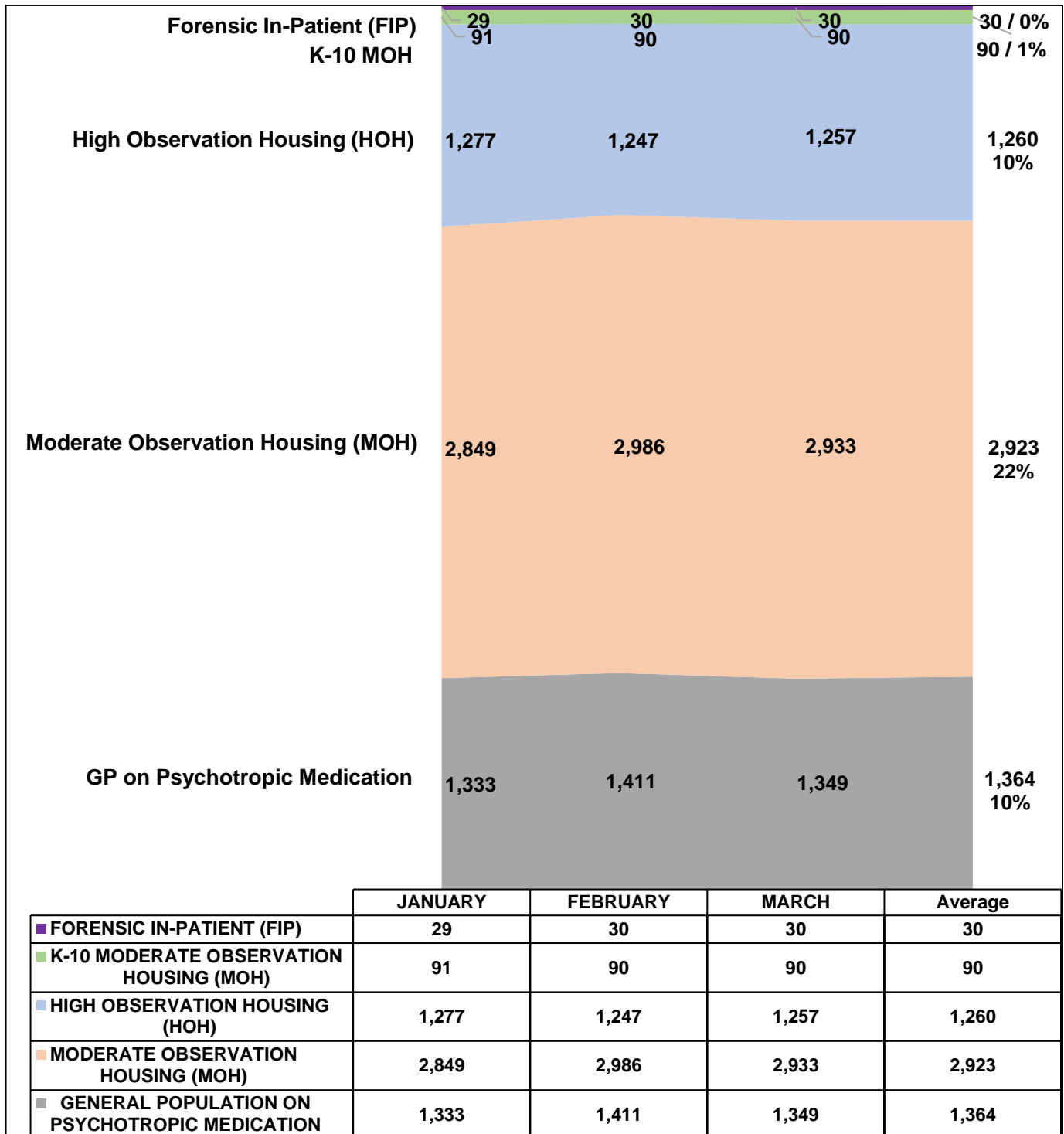
Arrest Category	Property Crimes	Crimes Against Persons	Drug Crimes	Vehicle Codes	Weapons Charges	Sex Crimes	Other	Total	% of the Sentence Status 1 Population
GP No Hold	9	76	1	11	2	3	12	114	40%
Special Handle M with No Holds	22	107	0	3	1	6	23	162	56%
GP with Holds	1	4	1	0	0	0	1	7	2%
Special Handle M with Holds	1	3	0	0	0	0	1	5	2%
<b>Total</b>	<b>33</b>	<b>190</b>	<b>2</b>	<b>14</b>	<b>3</b>	<b>9</b>	<b>37</b>	<b>288</b>	<b>100%</b>

*\*Information contained is based on a snapshot of the daily inmate population every Tuesday.*



## MENTAL HEALTH INMATE POPULATION

This quarter, the overall inmate population was 13,235 of which the mental health population averaged 5,667 that accounted for 43 percent. Inmates identified with mental health needs requiring specialized moderate or high observation housing, account for 33 percent of the overall population. The remaining 10 percent have been treated and continue to receive psychotropic medication while housed in general population.



*\*Information contained is based on a snapshot of the daily inmate population every Tuesday.*

## MISDEMEANOR INCOMPETENT TO STAND TRIAL (MIST)

County jail houses inmates who are awaiting trial for misdemeanor charges who have been found to be incompetent to stand trial. This quarter, the average number of inmates on MIST is 55.

Misdemeanor Incompetent to Stand Trial (MIST)									
January			February			March			Quarterly Average
Male	Female	Total	Male	Female	Total	Male	Female	Total	
40	13	<b>53</b>	42	8	<b>50</b>	48	13	<b>61</b>	<b>55</b>

*Information contained is based on a snapshot of the daily inmate population every Tuesday.*

## AMERICANS WITH DISABILITIES ACT (ADA)

Americans with Disabilities Act housing is used to accommodate inmates with mobility limitations and/or physical disabilities. This quarter, the average number of inmates requiring ADA is 354 which is lower than last quarter's 369 total.

Americans With Disabilities Act (ADA)				
Disability	January	February	March	Quarterly Average
Seeing Impaired	7	6	6	6
Hearing Impaired	4	6	5	5
Wheelchair	212	207	207	209
Mobility Impaired	132	137	134	134
<b>Monthly Total</b>	<b>355</b>	<b>356</b>	<b>352</b>	<b>354</b>

*Information contained is based on a snapshot of the daily inmate population every Tuesday.*

## MEDICAL HOUSING

Medical Outpatient/Specialty Housing (MOSH) is provided to inmates who require a level of medical treatment beyond that of stabilized medication distribution (pill call). The MOSH area in Men's Central Jail (MCJ) is also used to house inmates with mobility issues.

Additional Medical Housing				
Housing Area	January	February	March	Quarterly Average
Correctional Treatment Center (CTC)	106	108	93	102
Los Angeles County Medical Center (LCMC)	17	19	21	19
MCJ Medical/Clinic*	348	373	367	363
<b>Monthly Total</b>	<b>471</b>	<b>500</b>	<b>481</b>	<b>484</b>

*Data are averages gathered from Facility Count Sheet every Tuesday.*

*\*Includes some ADA housing.*

# **IN-CUSTODY PROGRAMS**

## LA COUNTY INMATE IN-CUSTODY PROGRAMS

The Los Angeles County jail offers several in-custody programs. They vary from in-custody work assignments, vocational job training, education, and life skill classes, as well as fire camp training and CDCR fire camp placement for AB109 inmates. Various programs awarded sentenced inmates additional time credits for their participation pursuant to the California Penal Code:

### CREDIT EARNINGS

Program	Penal Code	Credit Earned	Type of Inmate
<b>Sentenced GT/WT</b>	4019 PC	Day-for-Day (1:1)	All Sentenced Inmates
<b>Conservation</b>	4019.1 PC	One and one half-for One (1.5:1)	All Sentenced Inmates
<b>Fire Camp</b>	4019.2 PC	Two-for-One (2:1)	AB109 Sentenced Inmates
<b>Milestone</b>	4019.4 PC	Up to 6 weeks per year	AB109 Sentenced Inmates

### CONSERVATION WORK PROGRAM

The Conservation Work Program (CWP) requires inmates to complete their adjusted sentence while working in various job classifications, giving them the skills and work discipline necessary to increase their chances of success once released. Effective January 2015, all sentenced offenders, including TCS inmates are eligible to receive credits pursuant to Penal Code Section 4019.1. For this quarter, approximately 1,342 offenders (10% of the population) participated in CWP.

<b>CONSERVATION WORK PROGRAM (CWP)<sup>1</sup></b>				
Inmate Type	January	February <sup>2</sup>	March <sup>2</sup>	Quarterly Average <sup>2</sup>
Participating Inmates	1,466	1,386	1,174	<b>1,342</b>

<sup>1</sup> Information contained is based on a snapshot of the daily inmate population every Tuesday.

<sup>2</sup> On February 15, 2022 through March 31, 2022, MCJ data is not available.

### EDUCATION BASED INCARCERATION PROGRAMS

The Education Based Incarceration (EBI) Program uses traditional and nontraditional education which is designed to reduce incarceration by increasing the educational, civic, social, economic, and life skills of its participants. Offenders who are sentenced are eligible to receive credits pursuant to Penal Code 4019.4. For this quarter, 11 milestone credits were awarded.

*The EBI school program was limited due to COVID-19.*



## **FIRE CAMP TRAINING PROGRAM**

Fire Camp Training and California Institute for Women (CIW) training are aligned under the CWP. This program is the first step of training before an inmate may participate in a state-facilitated Fire Camp program overseen by the CDCR. Offenders who are sentenced under AB109 are eligible to receive credits pursuant to Penal Code 4019.1. The average number of inmates enrolled in the Fire Camp training program for this quarter was 27.

<b>FIRE CAMP TRAINING CAMP</b>				
<b>Housing Type</b>	<b>January</b>	<b>February</b>	<b>March</b>	<b>Quarterly Average</b>
PDC Fire Camp Training (Men)	25	27	29	<b>27</b>
CIW Fire Camp Training (Women)	0	0	0	<b>0</b>
<b>Monthly Totals</b>	<b>25</b>	<b>27</b>	<b>29</b>	<b>27</b>

## **CALIFORNIA DEPARTMENT OF CORRECTIONS AND REHABILITATION** **FIRE CAMP PROGRAM**

Once an inmate passes all necessary requirements in the Fire Camp training program located at Pitchess Detention Center (PDC) East facility, they are transferred to one of five state-contracted fire camp sites where they will serve the remainder of their adjusted sentence. Offenders who are sentenced under AB109 are eligible to receive credits pursuant to Penal Code 4019.2. The average number of inmates assigned to CDCR Fire Camp for this quarter was 4.

<b>CDCR FIRE CAMP</b>				
<b>Fire Camp Locations</b>	<b>January</b>	<b>February</b>	<b>March</b>	<b>Quarterly Average</b>
Acton Fire Camp	1	1	1	<b>1</b>
Francisquito Fire Camp	1	3	3	<b>2</b>
Holton Fire Camp	2	0	0	<b>1</b>
Julius Klein Fire Camp	0	0	0	<b>0</b>
Malibu Women's Fire Camp	0	0	0	<b>0</b>
<b>Monthly Totals</b>	<b>4</b>	<b>4</b>	<b>4</b>	<b>4</b>

## **IN-CUSTODY SUBSTANCE TREATMENT AND REENTRY TRANSITION**

The jail-based Substance Treatment and Reentry Transition (START) treatment services provides substance use disorder (SUD) treatment services at the different jail facilities. Treatment services include screening, clinical assessment, group and individual counseling, case management services, medication-assisted treatment, re-entry planning and care coordination.

<b>In-Custody START (CRDF)</b>	<b>January</b>	<b>February</b>	<b>March</b>	<b>Quarterly Average</b>
Enrolled	28	27	36	<b>30</b>
Completed	8	5	11	<b>8</b>
<b>In-Custody START (MCJ)</b>	<b>January</b>	<b>February</b>	<b>March</b>	<b>Quarterly Average</b>
Enrolled	71	75	78	<b>75</b>
Completed	5	2	17	<b>8</b>
<b>In-Custody START (PDC)</b>	<b>January</b>	<b>February</b>	<b>March</b>	<b>Quarterly Average</b>
Enrolled	52	54	67	<b>58</b>
Completed	9	9	13	<b>10</b>
<b>In-Custody START (TTCF)</b>	<b>January</b>	<b>February</b>	<b>March</b>	<b>Quarterly Average</b>
Enrolled	1	4	9	<b>5</b>
Completed	0	0	0	<b>0</b>

# **ALTERNATIVES TO CUSTODY PROGRAMS**

## **ALTERNATIVES TO CUSTODY PROGRAMS**

The Community Transition Unit (CTU), the Community Based Alternatives to Custody Unit (CBAC), and the Compliance Team work together by utilizing a variety of alternatives to custody programming options in an effort to enhance an inmate’s chances of success upon release. These programs are conducted in collaboration with local agencies including Community and Faith Based Organizations, Department of Mental Health (DMH), Department of Public Health (DPH) and other organizations. It is the Department’s goal to program inmates from intake through re-entry into the community. With this approach, the Department hopes to increase public safety and reduce the rate of recidivism.

Supported by release planning overseen by the CTU, and in partnership with contracted services, inmates are provided re-entry assistance through linkages to services that are initiated while they are in-custody and continued upon release. Through the Alternatives to Custody (ATC) programs, qualifying inmates are afforded the opportunity to complete the remaining portion of their sentence in a community treatment program. Inmates who do not qualify for ATC due to security or other reasons are referred to community providers for re-entry assistance.

The ATC programs include:

### **SUBSTANCE TREATMENT AND REENTRY TRANSITION PROGRAM**

The Substance Treatment and Reentry Transition (START) program is a DPH and Substance Abuse Prevention Control (SAPC) funded program that places eligible male and female inmates into residential Substance Use Disorder (SUD) treatment programs on electronic Global Positioning System monitoring as an ATC program.

### **FEMALE PROGRAMS**

The female programs are funded through community grants. They work directly with various residential programs approved by the Department, but not affiliated with the START program, and offer treatment bed for inmates under the ATC program. Several programs cater to specific clientele who fit a specified demographic in regards to age and gender.

### **VETERAN’S ADMINISTRATION**

The Veteran’s Administration (VA) funds SUD residential treatment under the ATC program for inmates who are confirmed to be a veteran entitled to VA benefits. The treatment programs are approved by the VA and are vetted by personnel from PMB/CTU.

<b>Program Quarterly Statistics</b>	<b>Enrolled</b>	<b>Completed</b>	<b>Returned to Custody</b>	<b>Absconded</b>
START	2	3	0	0
Female Programs	0	0	0	0
Veterans	0	0	0	0

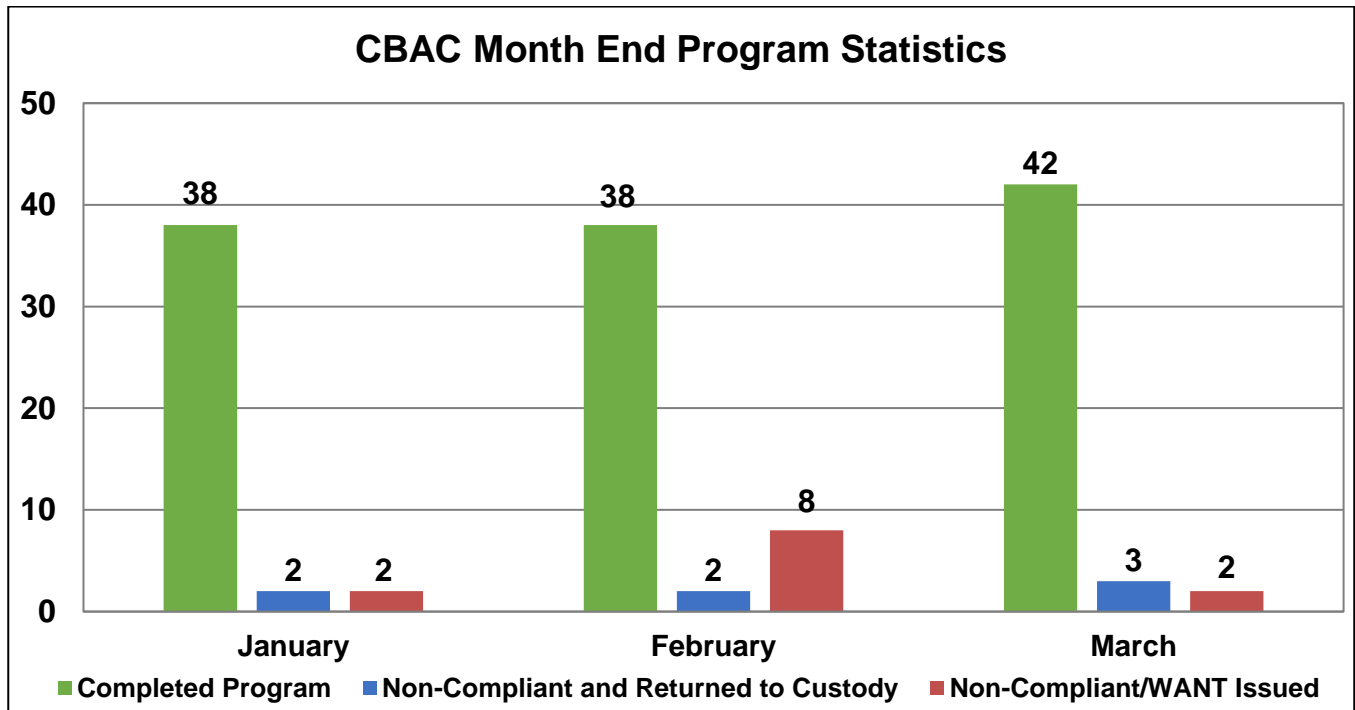
*\*Referrals and placements to the START community program are on hold pending execution of a new memorandum of agreement.*

## COMMUNITY BASED ALTERNATIVES TO CUSTODY

The Population Management Bureau's (PMB) Community Based Alternatives to Custody (CBAC) unit identifies qualified, low risk, sentenced offenders within the jail population to finish their remaining sentence in an out-of-custody alternative environment. Although these individuals are outside of traditional custody, they are still under the jurisdiction of the Department.

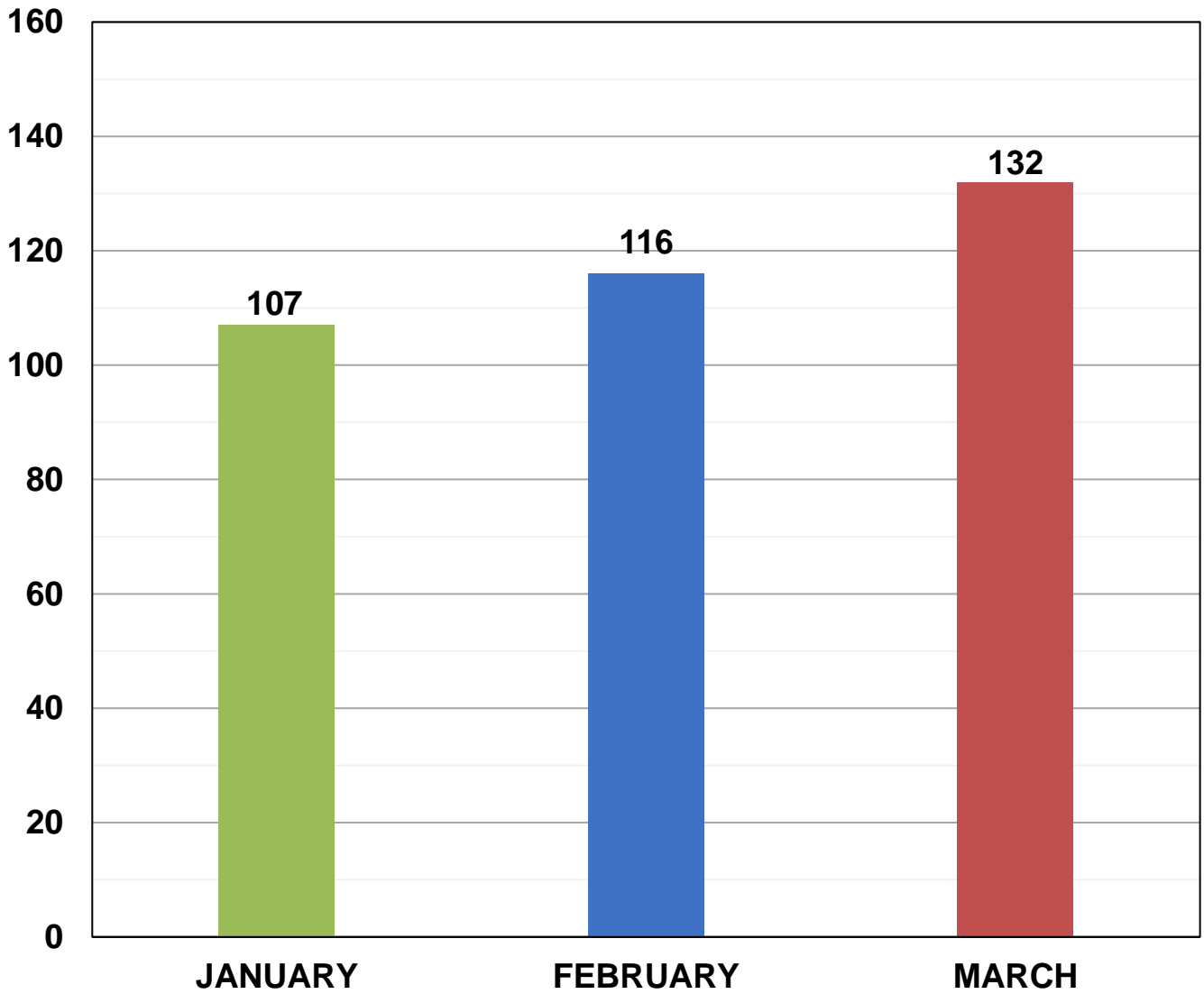
CBAC Monthly Placement									
Program	January			February			March		
	Male	Female	Total	Male	Female	Total	Male	Female	Total
Electronic Monitoring Program	7	3	10	8	6	14	9	3	12
Weekender Work Program	8	3	11	10	0	10	12	0	12
Work Release Program	17	0	17	28	2	30	27	2	29
<b>Monthly Totals</b>	<b>32</b>	<b>6</b>	<b>38</b>	<b>46</b>	<b>8</b>	<b>54</b>	<b>48</b>	<b>5</b>	<b>53</b>

The graph below depicts the total number of offenders who successfully completed the remainder of their sentence on a CBAC program. It shows the number of offenders who failed to complete the program, and with the efforts of the PMB Compliance Unit, were returned back to finish their sentence. It also shows those who failed to complete the program and were not returned back to custody.



**LA COUNTY ALTERNATIVES TO CUSTODY INMATE POPULATION**

**First Quarter 2022  
Los Angeles County Alternatives to Custody Inmate Count**



<b>2022 Quarterly ATC Average Daily Inmate Population (ADIP)*</b>
118

*\*Includes Community Based Alternatives to Custody (CBAC), Fire Camp and inmate station workers.*

# **RE-ENTRY ASSISTANCE**

## COMMUNITY RE-ENTRY AND RESOURCE CENTER

The information below represents recently released inmates and inquiries and/or contacts made by the general public who have been assisted with services at the Community Re-entry and Resource Center (CRRC) for the first quarter of 2022.

Inquiry Demographic Population	January	February	March	Total	Average
General Release	263	301	427	991	330
General Public	57	87	88	232	77
Alternatives to Custody Program	1	1	0	2	1
Coordinated Release	89	159	205	453	151
Work Release	0	1	4	5	2
Phone Referral	0	0	0	0	0
<b>Monthly Totals:</b>	<b>410</b>	<b>549</b>	<b>724</b>	<b>1,683</b>	<b>561</b>

Inquiry Demographic Gender	January	February	March	Total	Average
Male	207	280	414	901	300
Female	206	293	340	839	280
<b>Monthly Totals:</b>	<b>413</b>	<b>573</b>	<b>754</b>	<b>1,740</b>	<b>580</b>

Community Transition Unit (CTU) personnel visit the Inmate Reception Center release area to educate and remind inmates waiting to go home about services available at the CRRC. Walks of the release area are performed every 90 minutes.

	January	February	March	Total	Average
Number of 90 Minute Contact Walks	5*	6*	27	38	13
Number of Inmates Contacted	46	124	406	576	192
Number of Flyers Distributed	0	0	0	0	0

\*Lower due to non-renewal of Whole Person Care grant and the loss of 20 personnel until the staffing model was restructured.

## CTU COORDINATED RELEASES TO VARIOUS PROGRAMS

The final 90 days leading to an inmate's release from custody are the most critical in ensuring a successful transition from custody to Community Based Organization (CBO) treatment centers. During the time leading up to their release, inmates are interviewed several times by the CBO Staff and members of the CTU to ensure that they are matched up with a suitable treatment provider.

The coordinated release process helps to create a trust between law enforcement, inmate participants and CBO. The CTU's ultimate goal is to provide a successful recovery and re-entry into the community and to ultimately decrease recidivism.

	January	February	March	Total	Average
Coordinated Release	81	132	205	418	139



## CTU VITAL RECORDS

Through the Vital Records Program, Department staff members have been deputized by the County Registrar-Recorder to facilitate birth certificate applications for inmates born in Los Angeles County who have requested a certified copy. The fee of \$28 for certified copies of birth certificates is funded by the Inmate Welfare Fund.

All inmates in custody are able to apply for a replacement California Identification Card. The issued IDs are provided to the inmates upon their release. The inmates must still report to the California Department of Motor Vehicles (DMV) to obtain a driver's license following their release.

Records Processed	January	February	March	Quarterly Total	Quarterly Average
DMV - California Identification Card	138	105	98	341	114
Records – Birth Certificate	165	107	196	468	156
<b>Totals</b>	<b>303</b>	<b>212</b>	<b>294</b>	<b>809</b>	<b>270</b>

Records Issued	January	February	March	Quarterly Total	Quarterly Average
DMV - California Identification Card	0*	179	73	252	84
Records – Birth Certificate	159	167	75	401	134
<b>Totals</b>	<b>159</b>	<b>346</b>	<b>148</b>	<b>653</b>	<b>218</b>

\*DMV did not process any ID cards in January due to a DMV backlog.