



---

# CUSTODY DIVISION POPULATION YEAR END REVIEW

*2021*

Los Angeles County Sheriff's Department

---

*Alex Villanueva, Sheriff*

---

# TABLE OF CONTENTS

Executive Summary.....	3
1. Population Trends.....	5
Los Angeles County Inmate Population Graph	
Monthly Average Daily Inmate Population (ADIP) Trend	
Arrests, Bookings and Releases	
Release Practices	
Homeless and Veteran	
2. Facilities Overview.....	11
Rated Capacities - Board of State and Community Corrections	
Jail Housing Facilities	
Men's Central Jail (MCJ)	
Twin Towers Correctional Facility (TTCF)	
Century Regional Detention Facility (CRDF)	
Pitchess Detention Center (PDC) – East	
Pitchess Detention Center (PDC) – North	
Pitchess Detention Center (PDC) – South	
North County Correctional Facility (NCCF)	
3. Population Overview.....	18
Inmate Population Demographics	
Inmate Population Offender Age Groups	
Jail Population by Security Level	
Inmate Population Breakdown	
Crime Classification Statistics	
Inmates with M7	
No Cases Adjudicated	
No Cases Adjudicated Misdemeanor Population	
Mental Health Inmate Population	
Misdemeanor Incompetent to Stand Trial (MIST)	
Americans with Disabilities Act (ADA)	
Medical Housing	
4. In-Custody Programs.....	31
Credit Earnings	
Conservation Work Program (CWP)	
Education Based Incarceration Program (EBI-Milestone)	
Fire Camp Training Program	
California Department of Corrections and Rehabilitation (CDCR) Fire Camp Program	
Back on Track (BOT)	
In-Custody Substance Treatment and Reentry Transition (START) Program	

5. Alternatives to Custody Programs.....35  
    Community Transition Unit (CTU)  
    Substance Treatment and Reentry Transition (START)  
    Female Programs  
    Veteran’s Administration (VA)  
    Community Based Alternatives to Custody (CBAC)  
    LA County ATC Inmate Population Graph

6. Re-Entry Assistance.....39  
    Community Re-Entry and Resource Center (CRRC)  
    CTU Coordinated Releases to Various Programs  
    CTU Vital Records

## **EXECUTIVE SUMMARY**

### **2021 YEAR END**

The average daily inmate population (ADIP) of the Los Angeles County (County) jail system in 2021 was 14,576. This is a 3 percent increase from the 2020 ADIP of 14,212. This increase can be attributed to the increase of the state prison population.

In 2021, there were a total of 202,350 arrests versus 220,012 arrests in 2020, and of those arrests 53,208 were booked into the jail system this year versus 56,651 last year. The inmate population was comprised primarily of men, 91 percent. The largest group in the overall population breakdown by age was the 18-34 group at 56 percent. Detailed demographic data can be found on pages 19 and 20 of this report.

Approximately 41 percent of the inmate population was comprised of sentence status 1 inmates with no cases adjudicated. The average of this population had decreased by approximately 4 percent from 6,258 in 2020 to 6,024 in 2021.

The sentenced population was split between inmates traditionally sentenced to County jail time (approximately 6 percent) and those sentenced to County jail under AB109 (approximately 5 percent).

Last year, the governor's executive order temporarily suspended California Department of Corrections and Rehabilitation (CDCR) transfers, causing a rise in the state prison population. This year, the CDCR has slowly resumed intake of state prisoners. In 2021, an average of 2,988 sentenced inmates (approximately 21 percent of the population) were awaiting transfers to state prison compared to last year's 1,600 inmates (approximately 11 percent).

The Los Angeles County Sheriff's Department (Department) continued to compile reports on the number of inmates who identified themselves as being homeless and/or a veteran of the United States military. On average, there were 3,540 individuals (24 percent) in custody who reported they were homeless, and 280 (2 percent) who identified themselves as a veteran. For further information regarding these populations see page 10 of this report.

In 2021, an average of 5,874 inmates were receiving some level of mental health treatment, which accounted for 40 percent of the total inmate population. In comparison, during 2020, there was an average of 5,416 inmates receiving mental health treatment, which accounted for 38 percent of the total inmate population. The difference (458) represents an 8% increase from 2020 to 2021 in the mentally ill population.

## **EXECUTIVE SUMMARY CONTINUED**

### **2021 YEAR END**

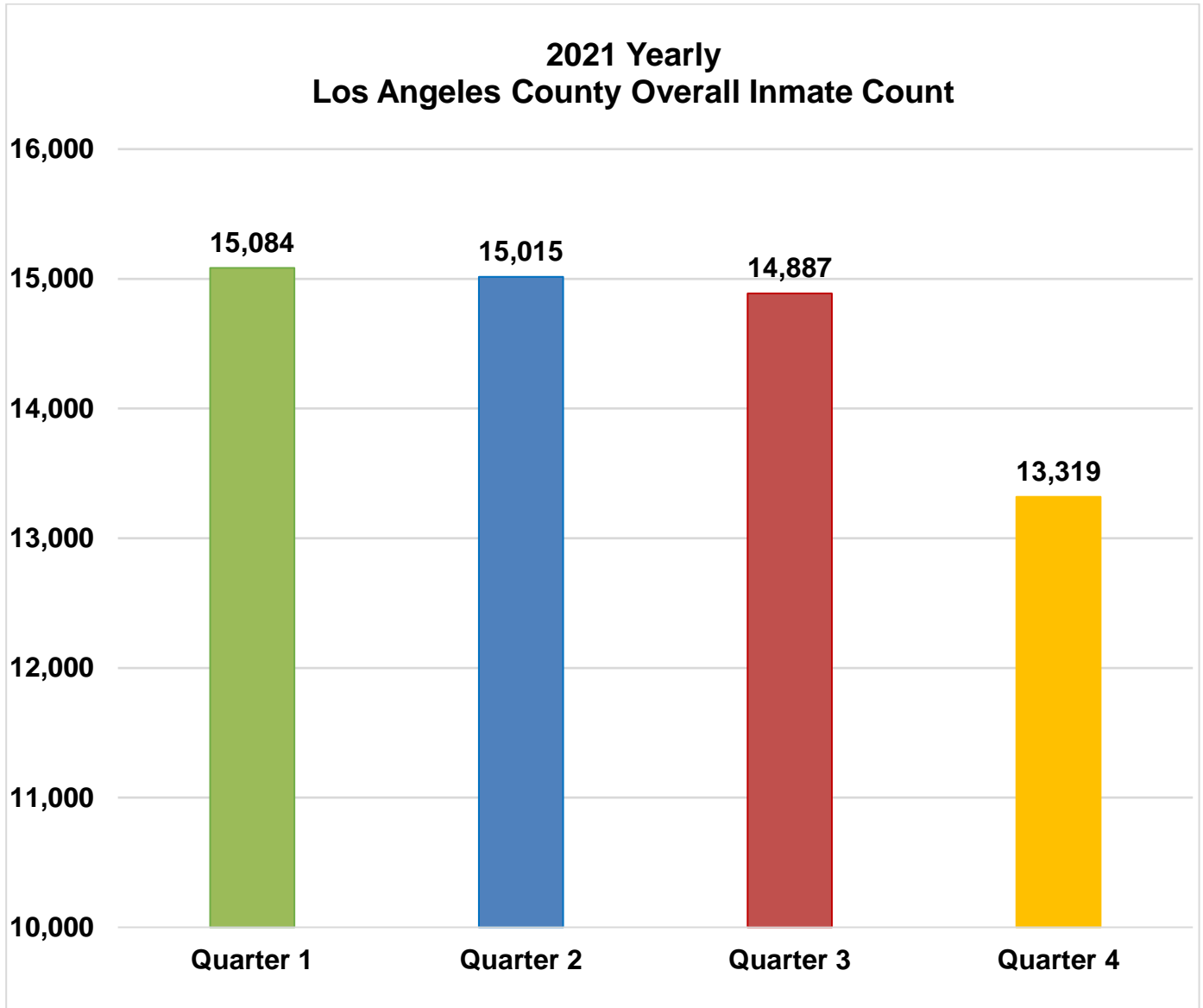
In 2021, conditions of over-crowding remained and necessitated the continued use of percentage release to manage the inmate population. Inmates serving traditional county sentence completed 10 percent of their court ordered sentences. Inmates serving sentences for felony serious and/or violent offenses (M7 charges) served 100 percent of their sentences, minus any time credits earned. Inmates sentenced under 1170 PC (AB109) served 70 percent of their sentences, minus any time credits earned. For further information regarding this year's percentage release criteria see page 9 of this report.

In 2021, the average number of inmates participating in an Alternatives to Custody (ATC) Program (144) decreased by 10 percent compared to the previous year (160). The continued decline of inmates participating in ATC programs may be due to the continued reduction in the release percentage, the zero-bail policy, and the difficulty to find qualified candidates who meet the criteria. For additional information regarding ATC programs see page 38 of this report.

*Information encompassed in this report/document depicts data related to a specific date and time. Data may differ based on numerous factors related to an inmate's status, disposition, facility, etc. Information may differ based on systems queried, archived information, date/time parameters or numerous other factors. Information in disparate reports should not be combined as data sets may be inconsistent in queries and responses.*

# POPULATION TRENDS

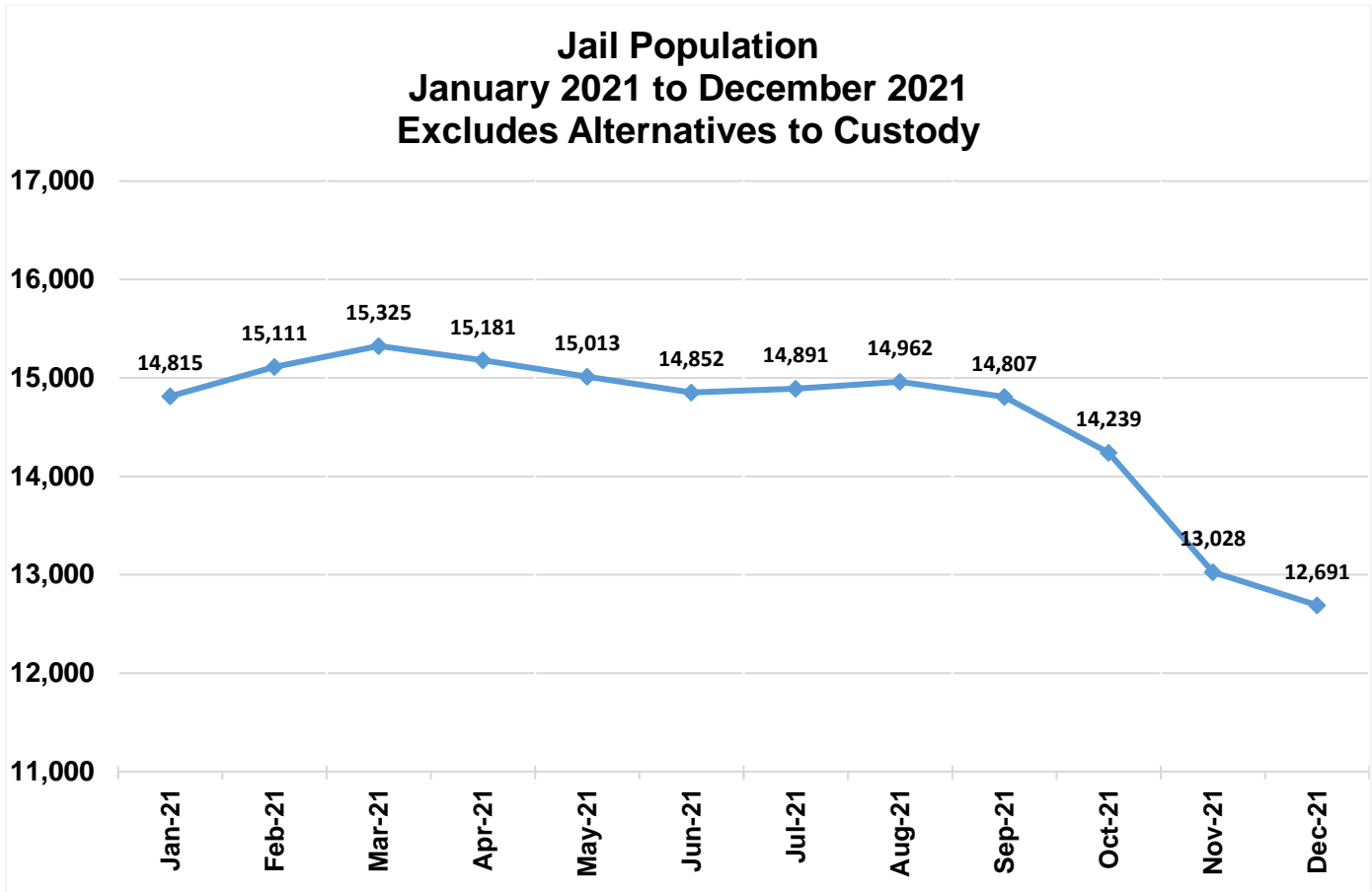
## LA COUNTY INMATE POPULATION



<b>2021 Yearly Overall Division ADIP</b>
<b>14,576</b>

*Yearly Division ADIP reflects all inmates processing into IRC, excludes ATC.*

## Monthly ADIP Trend



Yearly ADIP Comparison		
Year	ADIP	Notes
2011	15,014	(October - AB109 enacted)
2012	18,043	
2013	18,687	
2014	18,680	(November - Prop 47)
2015	17,049	
2016	16,613	
2017	17,024	
2018	16,910	
2019	17,070	
2020	14,212	(March – COVID-19)
2021	14,576	



## 2021 - ARRESTS AND BOOKING STATS

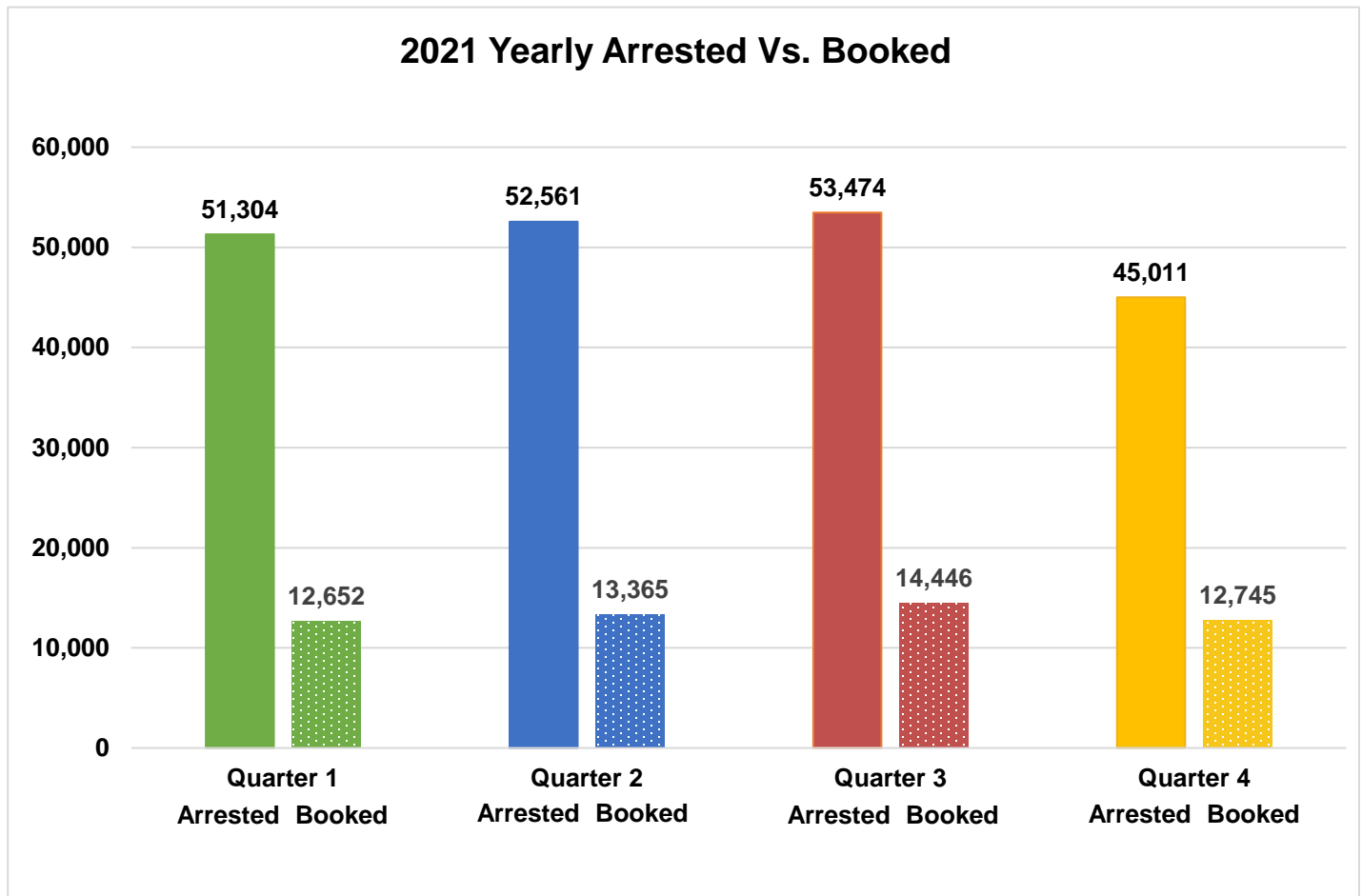
In 2021, the total number of persons arrested was 202,350. This is a decrease (8%) from 220,012 in 2020. In 2021, the total number of persons booked was 53,208. This is a decrease (6%) from 56,651 in 2020.

	Quarter 1		Quarter 2		Quarter 3		Quarter 4		Yearly Total	Yearly Average	Yearly %
	Quarterly Total	%	Quarterly Total	%	Quarterly Total	%	Quarterly Total	%			
<b>Felony</b>	25,022	49%	25,325	48%	26,265	49%	22,682	50%	99,294	24,824	49%
<b>Misdemeanor</b>	26,109	51%	27,001	51%	26,985	50%	22,104	49%	102,199	25,550	51%
<b>Other*</b>	173	0%	235	1%	224	1%	225	1%	857	214	0%
<b>Total Arrested</b>	<b>51,304</b>		<b>52,561</b>		<b>53,474</b>		<b>45,011</b>		<b>202,350</b>	<b>50,588</b>	
<b>Total Booked into LA County</b>	<b>12,652</b>	<b>25%</b>	<b>13,365</b>	<b>25%</b>	<b>14,446</b>	<b>27%</b>	<b>12,745</b>	<b>28%</b>	<b>53,208</b>	<b>13,302</b>	<b>26%</b>

\*Other includes child welfare, delinquent, infraction, and non-specific charges.

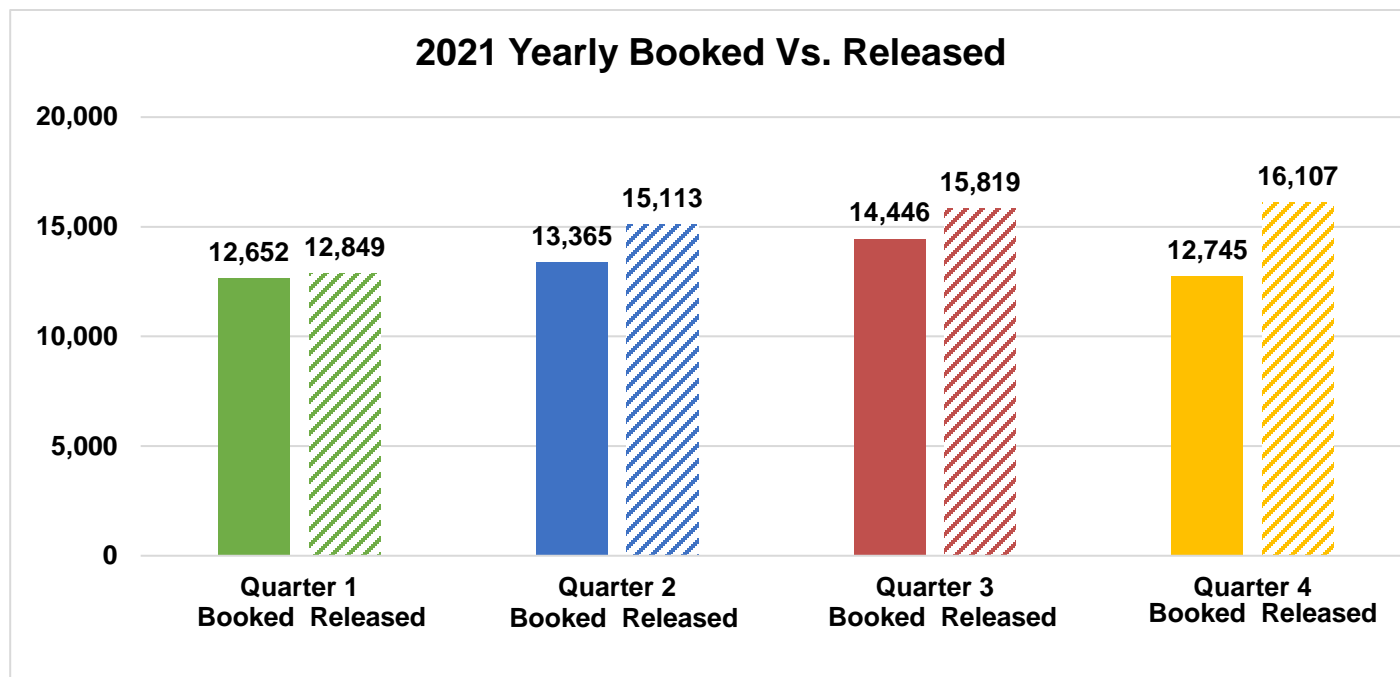
## 2021 YEARLY - ARRESTS VS. BOOKINGS

The graph below compares the total arrests and bookings for 2021.



## 2021 YEARLY - BOOKINGS VS. RELEASES

The Department released approximately 59,888 inmates in 2021.



### LA COUNTY JAIL RELEASE PRACTICES FOR 2021

Due to conditions of overcrowding, traditional county sentenced inmates were subject to early release under the following conditions. In an effort to mitigate the spread of COVID-19, additional release measures continued to be used. Release percentages for AB109 inmates were temporarily changed. The M7 charges were modified, shorts were extended by 60 days, and additional releases were made in collaboration with other county agencies. Bookings were affected by bail changes and COVID-19. CDCR has resumed intake of state prisoners. Some of the state prisoners were released from county jail upon serving their time specified by CDCR or after resentencing.

Quarter	Release Criteria Male	Release Criteria Female	1M7 Release Criteria		2Short Sentence Male	2Short Sentence Female
			Felony	Misdemeanor		
Quarter 1	10%	10%	100%	10%	240 days	240 days
Quarter 2	10%	10%	100%	10%	240 days	240 days
Quarter 3	10%	10%	100%	10%	240 days	240 days
Quarter 4	10%	10%	100%	<sup>(a)</sup> 10% to 100%	240 days	240 days

<sup>1</sup>Inmates classified as M7 have sentences for designated serious and/or violent offenses or have notoriety in the community, which requires their record jacket to go through extra 'security' checks upon release from Sheriff's custody.

<sup>2</sup>Shorts are inmates sentenced to a term in county jail, which after all legal credits are awarded and the current jail percentage time is considered, are immediately released from Sheriff's custody after processing from court.

<sup>(a)</sup>On November 2021, release criteria for Misdemeanor M7 charges were changed from 10% to 100%.

## Homeless

The chart below provides an average breakdown of the inmate population who stated they were homeless by gender, major race and age category, which is 24% of the total population.\*

	Quarter 1	Quarter 2	Quarter 3	Quarter 4	AVERAGE
<b>Male</b>	3,292	3,204	3,100	2,792	3,097
<b>Female</b>	402	399	462	510	443
<b>Total</b>	<b>3,694</b>	<b>3,603</b>	<b>3,562</b>	<b>3,302</b>	<b>3,540</b>

	Quarter 1	Quarter 2	Quarter 3	Quarter 4	AVERAGE
<b>Hispanic</b>	1,878	1,877	1,843	1,692	1,822
<b>Black</b>	1,151	1,082	1,070	977	1,070
<b>White</b>	537	525	544	518	531
<b>Other</b>	128	119	105	115	117
<b>Total</b>	<b>3,694</b>	<b>3,603</b>	<b>3,562</b>	<b>3,302</b>	<b>3,540</b>

	Quarter 1	Quarter 2	Quarter 3	Quarter 4	AVERAGE
<b>18 to 25</b>	686	653	616	540	624
<b>26 to 34</b>	1,362	1,345	1,346	1,275	1,332
<b>35 to 39</b>	560	561	539	508	542
<b>40 to 44</b>	404	386	403	393	396
<b>45 &amp; Older</b>	682	658	658	586	646
<b>Total</b>	<b>3,694</b>	<b>3,603</b>	<b>3,562</b>	<b>3,302</b>	<b>3,540</b>

*\*Homeless data is collected from COMPAS based on a snapshot of the inmate population collected each business day. These are numbers based upon self-identification and have not been confirmed.*

## Veteran

The chart below provides an average breakdown of the inmate population who stated they have served in the United States Military by gender, major race and age category, which is 2% of the total population.\*

	Quarter 1	Quarter 2	Quarter 3	Quarter 4	AVERAGE
<b>Male</b>	259	276	270	264	268
<b>Female</b>	7	10	15	17	12
<b>Total</b>	<b>266</b>	<b>286</b>	<b>285</b>	<b>281</b>	<b>280</b>

	Quarter 1	Quarter 2	Quarter 3	Quarter 4	AVERAGE
<b>Hispanic</b>	82	90	91	87	88
<b>Black</b>	98	103	104	93	100
<b>White</b>	73	82	78	84	79
<b>Other</b>	13	11	12	17	13
<b>Total</b>	<b>266</b>	<b>286</b>	<b>285</b>	<b>281</b>	<b>280</b>

	Quarter 1	Quarter 2	Quarter 3	Quarter 4	AVERAGE
<b>18 to 25</b>	18	20	19	14	18
<b>26 to 34</b>	56	51	51	48	52
<b>35 to 39</b>	38	41	41	46	41
<b>40 to 44</b>	30	36	39	46	38
<b>45 &amp; Older</b>	124	138	135	127	131
<b>Total</b>	<b>266</b>	<b>286</b>	<b>285</b>	<b>281</b>	<b>280</b>

*\*Veteran data is collected from COMPAS based on a snapshot of the inmate population collected each business day. These are numbers based upon self-identification and have not been confirmed by the Veterans Administration.*

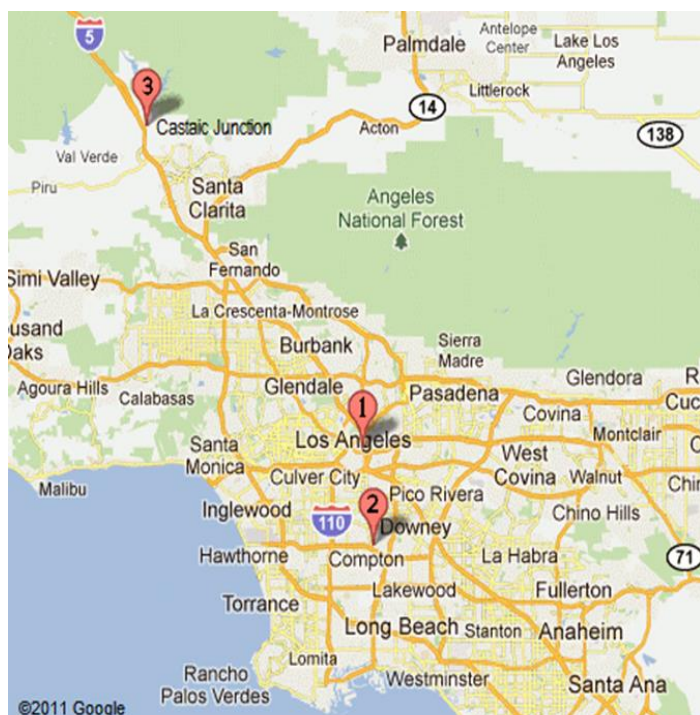
# **FACILITY OVERVIEW**

## **RATED CAPACITY**

The Board of State and Community Corrections (BSCC) is a government body which recommends capacity limits for county jails. The BSCC conducts biennial jail inspections; The Department was rated in July 2020.

<b>Board of State and Community Corrections</b>				
<b>LASD Custody Facilities</b>	<b>BSCC Rated Capacity</b>	<b>Quarterly Facility ADIP</b>	<b>Above BSCC Rated Capacity</b>	<b>% Over BSCC Capacity</b>
Men's Central Jail	3,512	3,825	313	9%
Men's Central Jail Outpatient Clinic	Unrated	405	-	-
Twin Towers Correctional Facility	2,432	2,921	489	20%
Correctional Treatment Center	Unrated	108	-	-
Century Regional Detention Facility	1,708	1,312	-396	-23%
CRDF Reception Center	Unrated	2	-	-
Pitchess Detention Center – East	926	17	-909	-98%
Pitchess Detention Center – North	830	1,264	434	52%
Pitchess Detention Center – South	782	1,013	231	30%
North County Correctional Facility	2,214	3,488	1,274	58%
Inmate Reception Center	Unrated	198	-	-
LCMC Jail Wards	Unrated	24	-	-
<b>TOTAL BSCC RATED CAPACITY*</b>	<b>YEARLY RATED FACILITY ADIP</b>	<b>TOTAL ABOVE BSCC RATED CAPACITY</b>	<b>TOTAL % OVER BSCC CAPACITY</b>	<b>TOTAL % OVER BSCC CAPACITY EXCLUDING EAST FACILITY</b>
12,404	13,840	1,436	12%	20%

\*Statistical data gathered from *Board of State and Community Corrections Inspection Report 7/2020*.



<b>LA County Jail Facilities</b>	
<b>1</b>	<ul style="list-style-type: none"> <li>➤ Men's Central Jail (MCJ)</li> <li>➤ Twin Towers Correctional Facility (TCF)</li> <li>➤ Los Angeles County Medical Center (LCMC)</li> <li>➤ Correctional Treatment Center (CTC)</li> <li>➤ Inmate Reception Center (IRC)</li> </ul>
<b>2</b>	<ul style="list-style-type: none"> <li>➤ Century Regional Detention Facility (CRDF)</li> </ul>
<b>3</b>	<ul style="list-style-type: none"> <li>➤ Pitchess Detention Center (PDC)</li> <li>➤ PDC East Facility</li> <li>➤ PDC North Facility</li> <li>➤ PDC South Facility</li> <li>➤ North County Correctional Facility (NCCF)</li> </ul>

## JAIL HOUSING FACILITIES

### MEN'S CENTRAL JAIL TOTAL INMATE POPULATION 2021

SECURITY LEVEL	Quarter 1	Quarter 2	Quarter 3	Quarter 4	Yearly Average	% Of Population
SECURITY LEVEL LOW 1-4	227	209	194	201	208	5%
SECURITY LEVEL MEDIUM 5-7	3,251	3,053	2,813	2,615	2,933	69%
SECURITY LEVEL HIGH 8-9	1,023	1,151	1,146	1,061	1,095	26%
<b>FACILITY TOTAL</b>	<b>4,501</b>	<b>4,413</b>	<b>4,153</b>	<b>3,877</b>	<b>4,236</b>	<b>100%</b>

#### SUB POPULATION HOUSED THROUGHOUT FACILITY<sup>1</sup>

HOUSING TYPE	Quarter 1	Quarter 2	Quarter 3	Quarter 4	Yearly Average
ADMINISTRATIVELY SEGREGATED INMATES (K-10) <sup>2</sup>	36	51	41	39	42
RESTRICTIVE HOUSING (K-17, K-18, K-19, K-20) <sup>3</sup>	368	296	267	240	293
ADMINISTRATIVELY SEGREGATED INMATES (K-1) <sup>4</sup>	5	5	1	1	3
AMERICANS WITH DISABILITIES ACT (ADA)	184	190	175	175	181
DISCIPLINE	29	34	21	12	24
GENERAL POPULATION ON PSYCHOTROPIC MEDS	1,367	1,237	1,069	869	1,136
INMATE WORKERS	431	399	304	288	356
LGBT (K-6 G) INMATES	361	338	311	302	328
MEDICAL/CLINIC	427	428	394	379	407
OTHER (K-6T/B) <sup>5</sup>	254	234	226	219	233
PRO-PER	79	79	71	61	73
MENTALLY ILL- MODERATE OBSERVATION / SERVICE AREA (MOH)	310	375	470	656	453
SEXUALLY VIOLENT PREDATORS	3	3	2	1	2
SEX CRIMES AGAINST CHILDREN (K-6 Y) INMATES	380	403	399	344	382
DEVELOPMENTALLY DISABLED	13	13	14	11	13

[1] Sub population housed throughout facility includes those who are classified with special housing needs and are included in the total inmate population. An inmate may belong to more than one subpopulation.

[2] K-10 Administratively segregated for various reasons including danger to self or others.

[3] K-17 Disruptive; K-18 Protective Custody; K-19 Major Disruptive; K-20 Highly Dangerous.

[4] K-1 Law Enforcement related in custody.

[5] K-6T Contempt of court, K-6B threatened by others

\*The High Observation Housing (HOH) HOPE Program was moved to Twin Towers Correctional Facility.

\*\*Statistical data are averages gathered from Facility Count Sheet every Tuesday.

**TWIN TOWERS CORRECTIONAL FACILITY  
TOTAL INMATE POPULATION  
2021**

<b>SECURITY LEVEL</b>	<b>Quarter 1</b>	<b>Quarter 2</b>	<b>Quarter 3</b>	<b>Quarter 4</b>	<b>Yearly Average</b>	<b>% Of Population</b>
SECURITY LEVEL LOW 1-4	170	162	184	174	173	6%
SECURITY LEVEL MEDIUM 5-7	2,040	1,993	2,009	1,851	1,973	64%
SECURITY LEVEL HIGH 8-9	934	891	928	893	912	30%
<b>FACILITY TOTAL</b>	<b>3,144</b>	<b>3,046</b>	<b>3,121</b>	<b>2,918</b>	<b>3,058</b>	<b>100%</b>

**SUB POPULATION HOUSED THROUGHOUT FACILITY<sup>1</sup>**

<b>HOUSING TYPE</b>	<b>Quarter 1</b>	<b>Quarter 2</b>	<b>Quarter 3</b>	<b>Quarter 4</b>	<b>Yearly Average</b>
ADMINISTRATIVELY SEGREGATED INMATES (K-10) <sup>2</sup>	64	57	44	54	55
RESTRICTIVE HOUSING (K-17, K-18, K-19, K-20) <sup>3</sup>	140	127	131	119	129
ADMINISTRATIVELY SEGREGATED INMATES (K-1) <sup>4</sup>	4	6	14	12	9
ADMINISTRATIVELY SEGREGATED INMATES (K-6B) <sup>5</sup>	98	90	79	74	85
AMERICANS WITH DISABILITIES ACT (ADA)	170	170	167	172	170
DISCIPLINE	17	15	16	16	16
FEMALE MEDICAL (CTC)	9	10	8	11	10
GENERAL POPULATION ON PSYCHOTROPIC MEDS - SECURITY LEVEL 1-4	21	16	12	7	14
GENERAL POPULATION ON PSYCHOTROPIC MEDS - SECURITY LEVEL 5-7	307	307	280	224	280
GENERAL POPULATION ON PSYCHOTROPIC MEDS - SECURITY LEVEL 8-9	148	137	125	117	132
LGBT (K-6 G) INMATES	64	56	52	46	55
MEDICAL (CTC)	99	93	110	101	101
MENTALLY ILL - HIGH OBSERVATION HOUSING (HOH)	966	1,023	1,014	1,018	1,005
MENTALLY ILL – MODERATE OBSERVATION / SERVICE AREA (MOH)	2,432	2,373	2,442	2,547	2,449
MENTALLY ILL - MODERATE OBSERVATION HOUSING (MOH) SEX CRIMES AGAINST CHILDREN (K-6 Y) INMATES	54	44	50	43	48

[1] Sub population housed throughout facility includes those who are classified with special housing needs and are included in the total inmate population. An inmate may belong to more than one subpopulation.

[2] K-10: Administratively segregated for various reasons including danger to self or others.

[3] K-17: Disruptive; K-18: Protective Custody; K-19: Major Disruptive; K-20: Highly Dangerous.

[4] K-1: Related to Law Enforcement-segregated from general population for safety reasons.

[5] K-6B: Administratively segregated are at risk of assault in GP housing.

\*Statistical data are averages gathered from Facility Count Sheet every Tuesday.

**CENTURY REGIONAL DETENTION CENTER  
TOTAL INMATE POPULATION  
2021**

<b>SECURITY LEVEL</b>	<b>Quarter 1</b>	<b>Quarter 2</b>	<b>Quarter 3</b>	<b>Quarter 4</b>	<b>Yearly Average</b>	<b>% Of Population</b>
SECURITY LEVEL LOW 1-4	148	143	147	171	<b>152</b>	<b>11%</b>
SECURITY LEVEL MEDIUM 5-7	1,059	826	814	800	<b>875</b>	<b>66%</b>
SECURITY LEVEL HIGH 8-9	169	270	373	399	<b>303</b>	<b>23%</b>
<b>FACILITY TOTAL</b>	<b>1,376</b>	<b>1,239</b>	<b>1,334</b>	<b>1,370</b>	<b>1,330</b>	<b>100%</b>

**SUB POPULATION HOUSED THROUGHOUT FACILITY<sup>1</sup>**

<b>HOUSING TYPE</b>	<b>Quarter 1</b>	<b>Quarter 2</b>	<b>Quarter 3</b>	<b>Quarter 4</b>	<b>Yearly Average</b>
ADMINISTRATIVELY SEGREGATED INMATES (K-10) <sup>2</sup>	12	15	11	11	<b>12</b>
RESTRICTIVE HOUSING (K-17, K-18, K-19, K-20) <sup>3</sup>	29	25	27	32	<b>28</b>
AMERICANS WITH DISABILITIES ACT (ADA)	30	19	16	15	<b>20</b>
K-8 INMATES <sup>4</sup>	18	17	25	21	<b>20</b>
DISCIPLINE	16	16	18	10	<b>15</b>
INMATE WORKERS	79	97	106	120	<b>101</b>
MEDICAL/CLINIC	75	7	19	30	<b>33</b>
MENTALLY ILL - HIGH OBSERVATION HOUSING (HOH)	285	293	311	305	<b>299</b>
MENTALLY ILL - MODERATE OBSERVATION HOUSING (MOH)	287	254	310	354	<b>301</b>
OTHER (K-6 B) <sup>5</sup>	3	3	5	4	<b>4</b>
SEX CRIMES AGAINST CHILDREN (K-6 Y) INMATES	5	3	3	4	<b>4</b>

[1] *Sub population housed throughout facility includes those who are classified with special housing needs and are included in the total inmate population. An inmate may belong to more than one subpopulation.*

[2] *K-10-Administratively segregated for various reasons including danger to self or others.*

[3] *K-17: Disruptive; K-18: Protective Custody; K-19: Major Disruptive; K-20: Highly Dangerous.*

[4] *K-8: Pregnant, Post-partum, Miscarriage or Terminated Pregnancy.*

[5] *K-6B Administratively segregated are at risk of assault in GP housing.*

*\*Statistical data are averages gathered from Facility Count Sheet every Tuesday.*



<b>PITCHESS DETENTION CENTER - EAST FACILITY (FIRE CAMP) TOTAL INMATE POPULATION 2021</b>						
<b>SECURITY LEVEL</b>	<b>Quarter 1</b>	<b>Quarter 2</b>	<b>Quarter 3</b>	<b>Quarter 4</b>	<b>Yearly Average</b>	<b>% Of Population</b>
SECURITY LEVEL LOW 1-4	12	13	7	5	9	53%
SECURITY LEVEL MEDIUM 5-7	7	5	8	11	8	47%
SECURITY LEVEL HIGH 8-9	0	0	0	0	0	0%
<b>FACILITY TOTAL</b>	<b>19</b>	<b>18</b>	<b>15</b>	<b>16</b>	<b>17</b>	<b>100%</b>

*\*Statistical data are averages gathered from Facility Count Sheet every Tuesday.*

<b>PITCHESS DETENTION CENTER – NORTH TOTAL INMATE POPULATION 2021</b>						
<b>SECURITY LEVEL</b>	<b>Quarter 1</b>	<b>Quarter 2</b>	<b>Quarter 3</b>	<b>Quarter 4</b>	<b>Yearly Average</b>	<b>% Of Population</b>
SECURITY LEVEL LOW 1-4	27	41	39	44	38	3%
SECURITY LEVEL MEDIUM 5-7	1,338	1,145	1,081	992	1,139	90%
SECURITY LEVEL HIGH 8-9	33	64	93	136	82	7%
<b>FACILITY TOTAL</b>	<b>1,398</b>	<b>1,250</b>	<b>1,213</b>	<b>1,172</b>	<b>1,259</b>	<b>100%</b>

**SUB POPULATION HOUSED THROUGHOUT FACILITY<sup>1</sup>**

<b>HOUSING TYPE</b>	<b>Quarter 1</b>	<b>Quarter 2</b>	<b>Quarter 3</b>	<b>Quarter 4</b>	<b>Yearly Average</b>
ADMINISTRATIVELY SEGREGATED INMATES (K6-B) <sup>2</sup>	56	66	95	60	69
DISCIPLINE	19	16	16	11	16
INMATE WORKERS	61	77	75	64	69
SEX CRIMES AGAINST CHILDREN (K-6Y) INMATES	382	384	380	344	373
MENTALLY ILL – MODERATE OBSERVATION HOUSING (MOH)	251	275	200	260	247

<sup>[1]</sup> Sub population housed throughout facility includes those who are classified with special housing needs and are included in the total inmate population. An inmate may belong to more than one subpopulation.

<sup>[2]</sup> K6-B inmates housed at PDC North Facility beginning March 2021.

*\*Statistical data are averages gathered from Facility Count Sheet every Tuesday.*

<b>PITCHESS DETENTION CENTER – SOUTH TOTAL INMATE POPULATION 2021</b>						
<b>SECURITY LEVEL</b>	<b>Quarter 1</b>	<b>Quarter 2</b>	<b>Quarter 3</b>	<b>Quarter 4</b>	<b>Yearly Average</b>	<b>% Of Population</b>
SECURITY LEVEL LOW 1-4	34	30	26	26	29	3%
SECURITY LEVEL MEDIUM 5-7	886	1,088	1,210	737	980	97%
SECURITY LEVEL HIGH 8-9	0	0	0	0	0	0%
<b>FACILITY TOTAL</b>	<b>920</b>	<b>1,118</b>	<b>1,236</b>	<b>763</b>	<b>1,009</b>	<b>100%</b>
<b>SUB POPULATION HOUSED THROUGHOUT FACILITY<sup>1</sup></b>						
<b>HOUSING TYPE</b>	<b>Quarter 1</b>	<b>Quarter 2</b>	<b>Quarter 3</b>	<b>Quarter 4</b>	<b>Yearly Average</b>	
BACK ON TRACK	7	8	5	4	6	
INMATE WORKERS	181	217	181	112	173	

[1] Sub population housed throughout facility includes those who are classified with special housing needs and are included in the total inmate population. An inmate may belong to more than one subpopulation.

\*Statistical data are averages gathered from Facility Count Sheet every Tuesday.

<b>NORTH COUNTY CORRECTIONAL FACILITY TOTAL INMATE POPULATION 2021</b>						
<b>SECURITY LEVEL</b>	<b>Quarter 1</b>	<b>Quarter 2</b>	<b>Quarter 3</b>	<b>Quarter 4</b>	<b>Yearly Average</b>	<b>% Of Population</b>
SECURITY LEVEL LOW 1-4	157	157	149	147	153	4%
SECURITY LEVEL MEDIUM 5-7	2,699	2,597	2,160	1,735	2,298	66%
SECURITY LEVEL HIGH 8-9	668	976	1,282	1,162	1,022	30%
<b>FACILITY TOTAL</b>	<b>3,524</b>	<b>3,730</b>	<b>3,591</b>	<b>3,044</b>	<b>3,473</b>	<b>100%</b>
<b>SUB POPULATION HOUSED THROUGHOUT FACILITY<sup>1</sup></b>						
<b>HOUSING TYPE</b>	<b>Quarter 1</b>	<b>Quarter 2</b>	<b>Quarter 3</b>	<b>Quarter 4</b>	<b>Yearly Average</b>	
RESTRICTIVE HOUSING (K-17, K-18, K-19, K-20) <sup>2</sup>	9	11	21	23	16	
ADMINISTRATIVELY SEGREGATED INMATES (K-6B)	184	155	153	140	158	
DISCIPLINE	87	96	91	90	91	
INMATE WORKERS	520	608	523	456	527	
VETERANS	27	32	22	16	24	

[1] Sub population housed throughout facility includes those who are classified with special housing needs and are included in the total inmate population. An inmate may belong to more than one subpopulation.

[2] K-17: Disruptive; K-18: Protective Custody; K-19: Major Disruptive; K-20: Highly Dangerous.

\*Statistical data are averages gathered from Facility Count Sheet every Tuesday.

# POPULATION OVERVIEW

## INMATE POPULATION DEMOGRAPHICS

Racial demographics for 2021 indicate the three most populous racial groups within the County Jail for both male and female offenders are Hispanic (55%), Black (29%), and White (13%).

COMBINED	Quarter 1		Quarter 2		Quarter 3		Quarter 4		Yearly Average	Yearly %
	Race	Population	%	Population	%	Population	%	Population		
Hispanic	8,234	55%	8,325	55%	8,268	56%	7,265	54%	8,023	55%
Black	4,478	30%	4,342	29%	4,218	28%	3,844	29%	4,221	29%
White	1,842	12%	1,851	13%	1,891	13%	1,760	13%	1,836	13%
All Others	456	3%	445	3%	431	3%	397	3%	432	3%
Chinese	43	0%	43	0%	38	0%	41	1%	41	0%
Filipino	18	0%	17	0%	17	0%	21	0%	19	0%
Pacific Islanders	14	0%	15	0%	18	0%	16	0%	16	0%
Japanese	3	0%	4	0%	3	0%	2	0%	3	0%
American Indian	10	0%	10	0%	15	0%	15	0%	13	0%
<b>Total</b>	<b>15,098</b>	<b>100%</b>	<b>15,052</b>	<b>100%</b>	<b>14,899</b>	<b>100%</b>	<b>13,361</b>	<b>100%</b>	<b>14,604</b>	<b>100%</b>

MALE	Quarter 1		Quarter 2		Quarter 3		Quarter 4		Yearly Average	Yearly %
	Race	Population	%	Population	%	Population	%	Population		
Hispanic	7,593	56%	7,767	56%	7,644	57%	6,619	55%	7,406	56%
Black	4,047	29%	3,950	29%	3,821	28%	3,429	29%	3,812	29%
White	1,595	12%	1,616	12%	1,635	12%	1,514	13%	1,590	12%
All Others	405	3%	399	3%	381	3%	343	3%	382	3%
Chinese	42	0%	40	0%	34	0%	36	0%	38	0%
Filipino	16	0%	15	0%	14	0%	18	0%	16	0%
Pacific Islanders	12	0%	13	0%	16	0%	14	0%	14	0%
Japanese	3	0%	4	0%	3	0%	2	0%	3	0%
American Indian	9	0%	8	0%	13	0%	12	0%	11	0%
<b>Total</b>	<b>13,722</b>	<b>100%</b>	<b>13,812</b>	<b>100%</b>	<b>13,561</b>	<b>100%</b>	<b>11,987</b>	<b>100%</b>	<b>13,272</b>	<b>100%</b>

FEMALE	Quarter 1		Quarter 2		Quarter 3		Quarter 4		Yearly Average	Yearly %
	Race	Population	%	Population	%	Population	%	Population		
Hispanic	641	47%	558	45%	624	47%	646	47%	617	47%
Black	431	31%	392	32%	397	30%	415	30%	409	31%
White	247	18%	235	19%	256	19%	246	18%	246	18%
All Others	51	4%	46	4%	50	4%	54	4%	50	4%
Chinese	1	0%	3	0%	4	0%	5	1%	3	0%
Filipino	2	0%	2	0%	3	0%	3	0%	3	0%
Pacific Islanders	2	0%	2	0%	2	0%	2	0%	2	0%
Japanese	0	0%	0	0%	0	0%	0	0%	0	0%
American Indian	1	0%	2	0%	2	0%	3	0%	2	0%
<b>Total</b>	<b>1,376</b>	<b>100%</b>	<b>1,240</b>	<b>100%</b>	<b>1,338</b>	<b>100%</b>	<b>1,374</b>	<b>100%</b>	<b>1,332</b>	<b>100%</b>

\*Statistical data are averages gathered from Custody Division Daily Briefing Report every Tuesday.

## INMATE POPULATION OFFENDER AGE GROUPS

The 26-34 year old cohort was the most frequently represented age group within the jail population for 2021, followed by the 18-25 year old cohort.

COMBINED	Quarter 1		Quarter 2		Quarter 3		Quarter 4		Yearly Average	Yearly %
	Age Group	Population	%	Population	%	Population	%	Population		
18 to 25	3,111	21%	3,036	20%	2,902	19%	2,471	19%	2,880	19%
26 to 34	5,484	36%	5,544	37%	5,482	37%	4,942	37%	5,363	37%
35 to 39	2,163	14%	2,212	15%	2,210	15%	1,973	15%	2,140	15%
40 to 44	1,623	11%	1,600	10%	1,629	11%	1,526	11%	1,595	11%
45 & Older	2,717	18%	2,660	18%	2,676	18%	2,449	18%	2,626	18%
<b>Total</b>	<b>15,098</b>	<b>100%</b>	<b>15,052</b>	<b>100%</b>	<b>14,899</b>	<b>100%</b>	<b>13,361</b>	<b>100%</b>	<b>14,604</b>	<b>100%</b>

MALE	Quarter 1		Quarter 2		Quarter 3		Quarter 4		Yearly Average	Yearly %
	Age Group	Population	%	Population	%	Population	%	Population		
18 to 25	2,858	21%	2,812	20%	2,654	20%	2,233	19%	2,639	20%
26 to 34	4,927	36%	5,047	37%	4,947	36%	4,374	36%	4,824	36%
35 to 39	1,950	14%	2,006	14%	1,993	15%	1,753	15%	1,926	15%
40 to 44	1,481	11%	1,472	11%	1,493	11%	1,384	11%	1,458	11%
45 & Older	2,506	18%	2,475	18%	2,474	18%	2,243	19%	2,425	18%
<b>Total</b>	<b>13,722</b>	<b>100%</b>	<b>13,812</b>	<b>100%</b>	<b>13,561</b>	<b>100%</b>	<b>11,987</b>	<b>100%</b>	<b>13,272</b>	<b>100%</b>

FEMALE	Quarter 1		Quarter 2		Quarter 3		Quarter 4		Yearly Average	Yearly %
	Age Group	Population	%	Population	%	Population	%	Population		
18 to 25	253	19%	224	18%	248	19%	238	17%	241	18%
26 to 34	557	40%	497	40%	535	40%	568	42%	539	41%
35 to 39	214	16%	206	17%	217	16%	220	16%	214	16%
40 to 44	141	10%	128	10%	136	10%	142	10%	137	10%
45 & Older	211	15%	185	15%	202	15%	206	15%	201	15%
<b>Total</b>	<b>1,376</b>	<b>100%</b>	<b>1,240</b>	<b>100%</b>	<b>1,338</b>	<b>100%</b>	<b>1,374</b>	<b>100%</b>	<b>1,332</b>	<b>100%</b>

\*Statistical data are averages gathered from Custody Division Daily Briefing Report every Tuesday.

## **JAIL POPULATION BY SECURITY LEVEL**

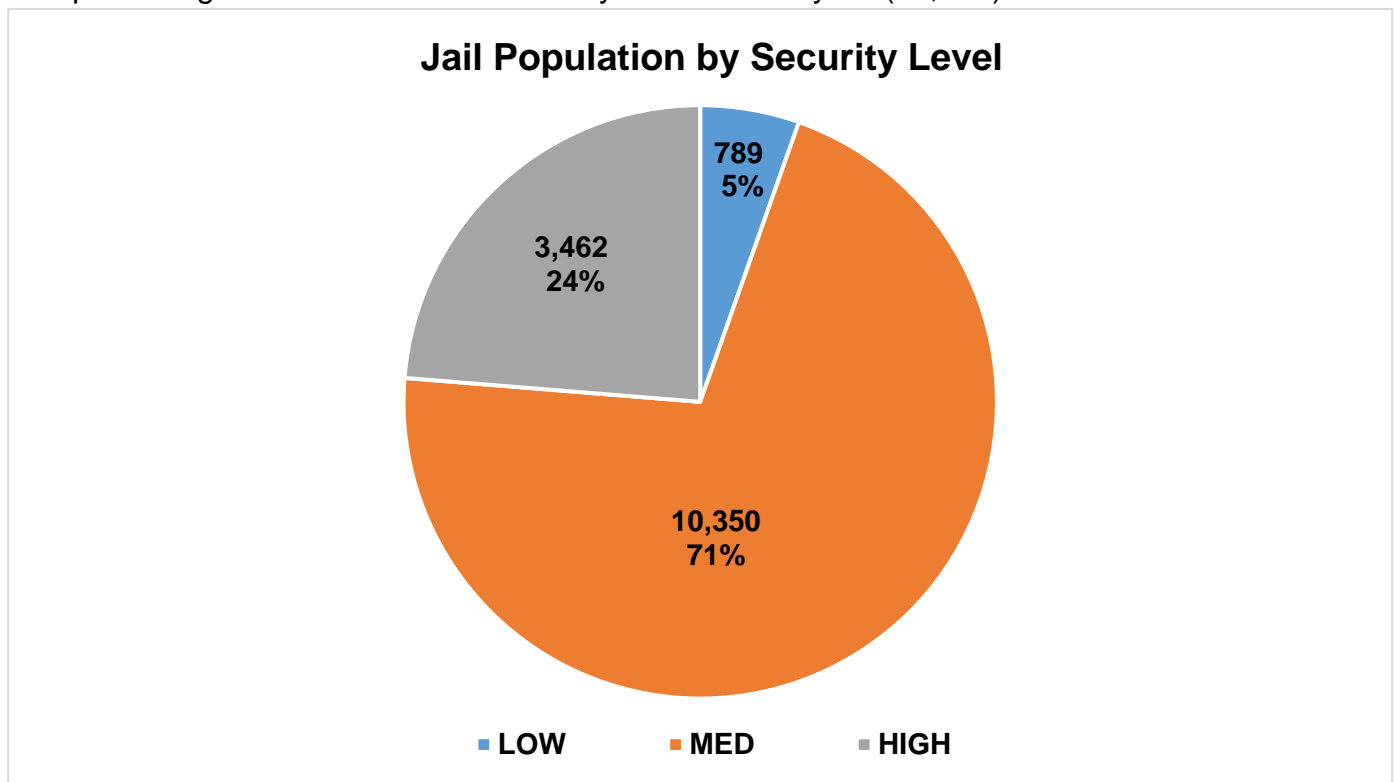
The Department utilizes the Northpointe Classification system to assign security levels to inmates. The security levels guide where an inmate will be housed based on their individual risk for in-custody misconduct. Lower security housing areas offer more programming and privileges to better prepare the inmates for release. Higher security housing is more restricted and therefore limited in what programs are offered, due to potential risk of serious misconduct and/or escape by the high security level inmate population. All inmates are re-evaluated for reclassification of security level which occurs every 45 days.

<b>Jail Population by Security Level</b>				
<b>Quarter</b>	<b>Low</b>	<b>Medium</b>	<b>High</b>	<b>Total</b>
<b>1</b>	795	11,430	2,877	15,102
<b>2</b>	783	10,866	3,400	15,049
<b>3</b>	777	10,241	3,876	14,895
<b>4</b>	799	8,863	3,696	13,358
<b>Average</b>	<b>789</b>	<b>10,350</b>	<b>3,462</b>	<b>14,601</b>
<b>Percent</b>	<b>5%</b>	<b>71%</b>	<b>24%</b>	<b>100%</b>

\*This chart only includes inmates housed in LASD Type II facilities, does not include inmates housed in alternative custody beds.

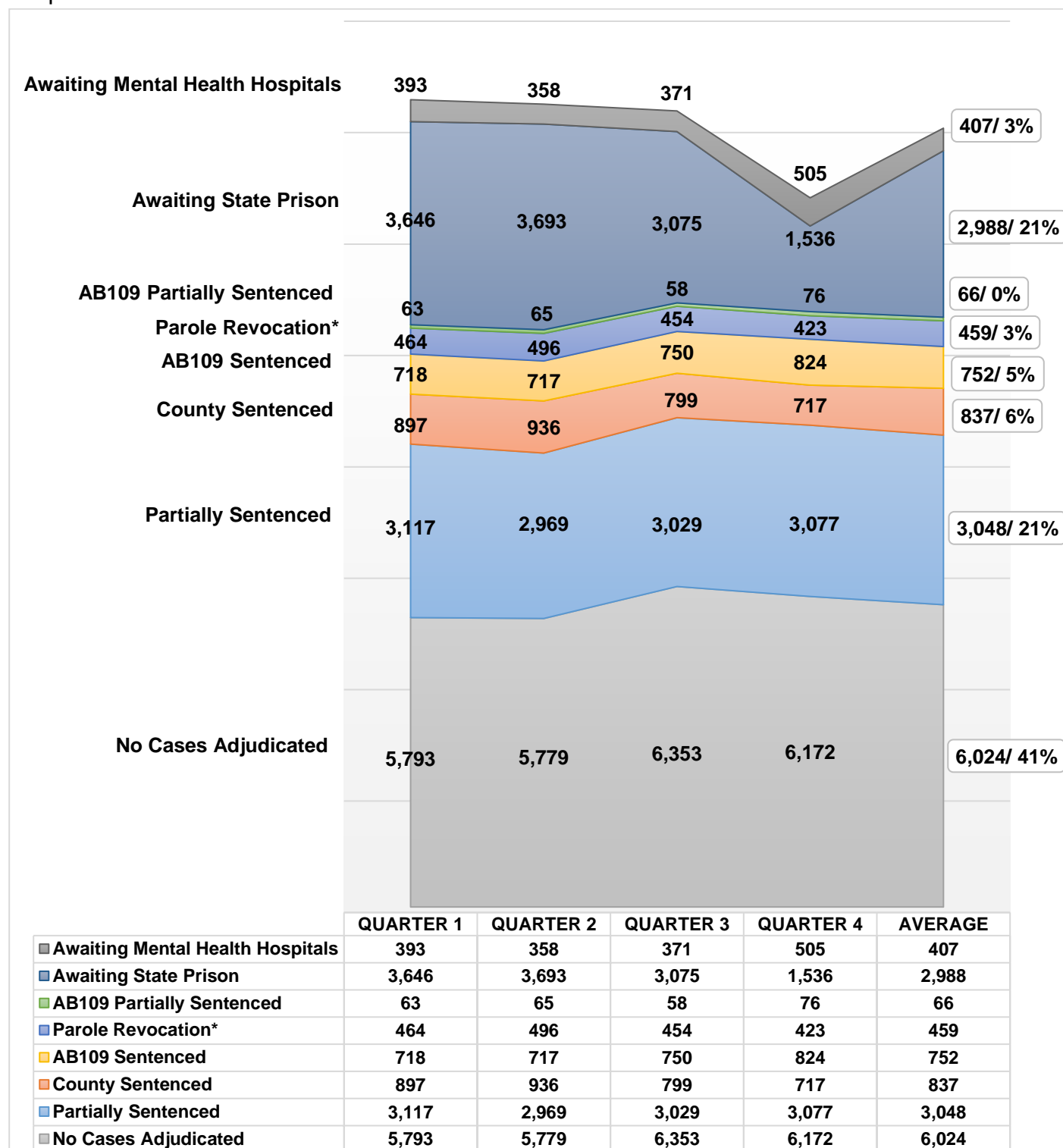
\*\*Information contained is based on a snapshot of the daily inmate population purge every Tuesday.

The pie graph below depicts the average number of inmates housed this year by security level. The percentage is calculated to the Facility ADIP for this year (14,601).



## INMATE POPULATION BREAKDOWN

The inmate population consists of various categories of inmates in broad groupings, including: no cases adjudicated, traditional county sentenced, AB109 sentenced, AB109 sentenced with additional charges, parole/revocation violators, and those awaiting transfer to state prison and hospitals.



\*Parole Revocation includes PRCS Revocation 3455, Flash Incarceration 3454 and Inmates with a 3056 hold.

\*\*This report is a general overview of the inmate population. As it does not include all subgroups of the inmate population, it is not intended to be relied upon as a definitive representation of the entire inmate population.

## **INMATE POPULATION BREAKDOWN CONTINUED**

- **AWAITING STATE PRISON**

- During 2021, an average of 2,988 inmates were awaiting transfer to state prison, some while pending trial on other cases. Due to an executive order, CDCR halted the intake and transfer of county jail inmates, resulting in an increase in the population of inmates awaiting state prison. CDCR has resumed intake of state prisoners. Some of the state prisoners were released from county jail upon serving their time specified by CDCR or after resentencing.

- **AB109 PAROLE AND PROBATION VIOLATORS**

- An average of 459 AB109 inmates were in custody for violating their parole or probation.

- **AB109 SENTENCED**

- An average of 752 inmates were in custody, sentenced under AB109.

- **TRADITIONAL COUNTY SENTENCED INMATE POPULATION**

- The average daily count for the TCS population was 837, approximately 6% of the inmate population.

- **NO CASES ADJUDICATED**

- During 2021, there were approximately 53,208 new bookings into the County jail. Forty-one percent (41%) of the average daily inmate population (14,576) was comprised of inmates who did not have their cases adjudicated. These include inmates who have an open case and have not been sentenced by the courts, along with court returnees. Court returnees are inmates returning from state prisons or state hospitals to either face new charges, re-litigate past crimes, follow up on competency reports, or for civil matters (witness, child custody, etc.)



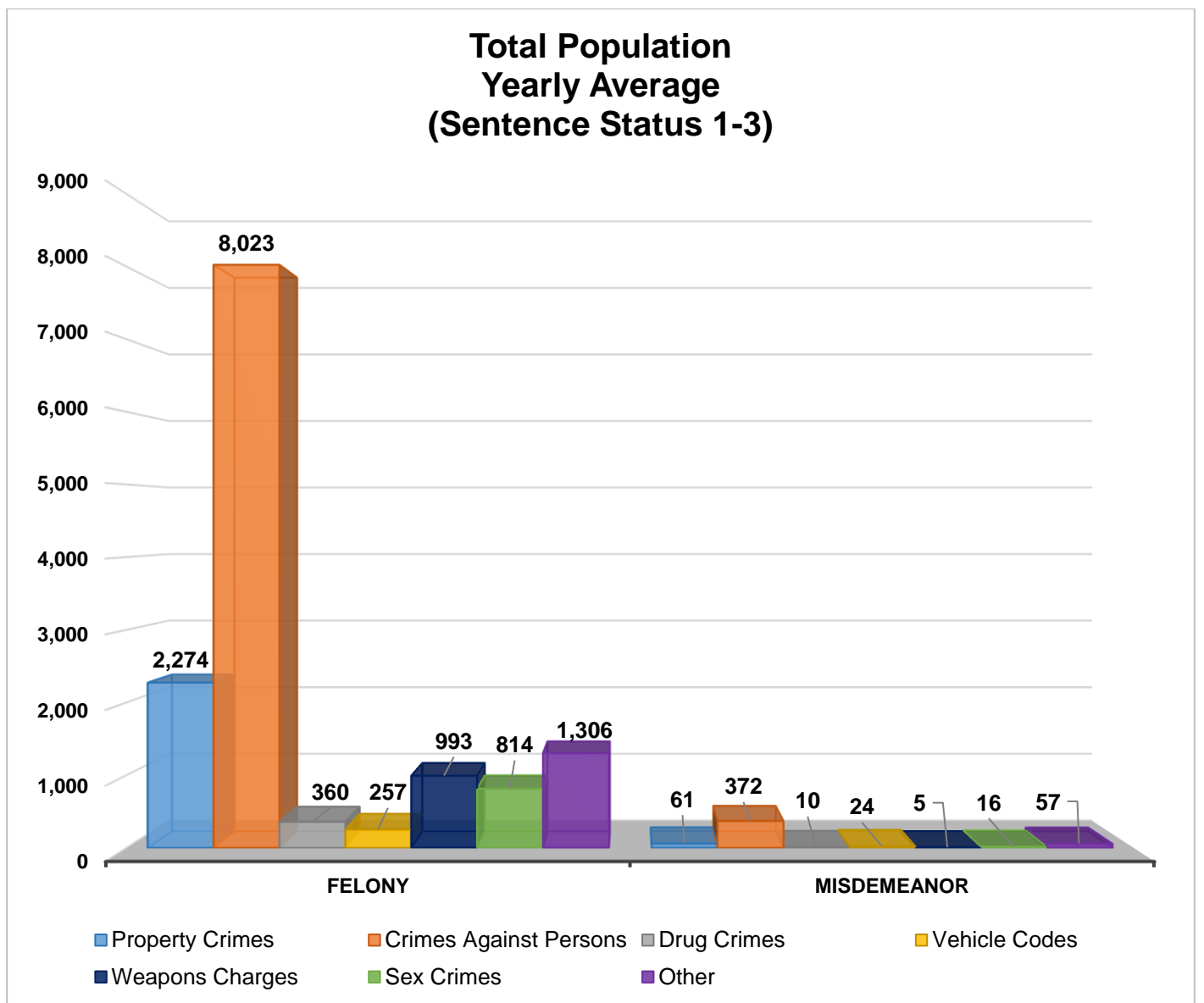
## CRIME CLASSIFICATION STATISTICS

The chart below provides an average breakdown for the entire inmate population, both sentenced and un-sentenced, by arrest category.

Total Population (Sentence Status 1-3)

Arrest Category	Property Crimes	Crimes Against Persons	Drug Crimes	Vehicle Codes	Weapons Charges	Sex Crimes	Other	Total	Percentage of the Population
<b>Felony</b>	2,274	8,023	360	257	993	814	1,306	14,027	96%
<b>Misdemeanor</b>	61	372	10	24	5	16	57	545	4%
<b>Total</b>	2,335	8,395	370	281	998	830	1,363	14,572	100%

*\*Information contained is based on a snapshot of the daily inmate population purged every Tuesday.*



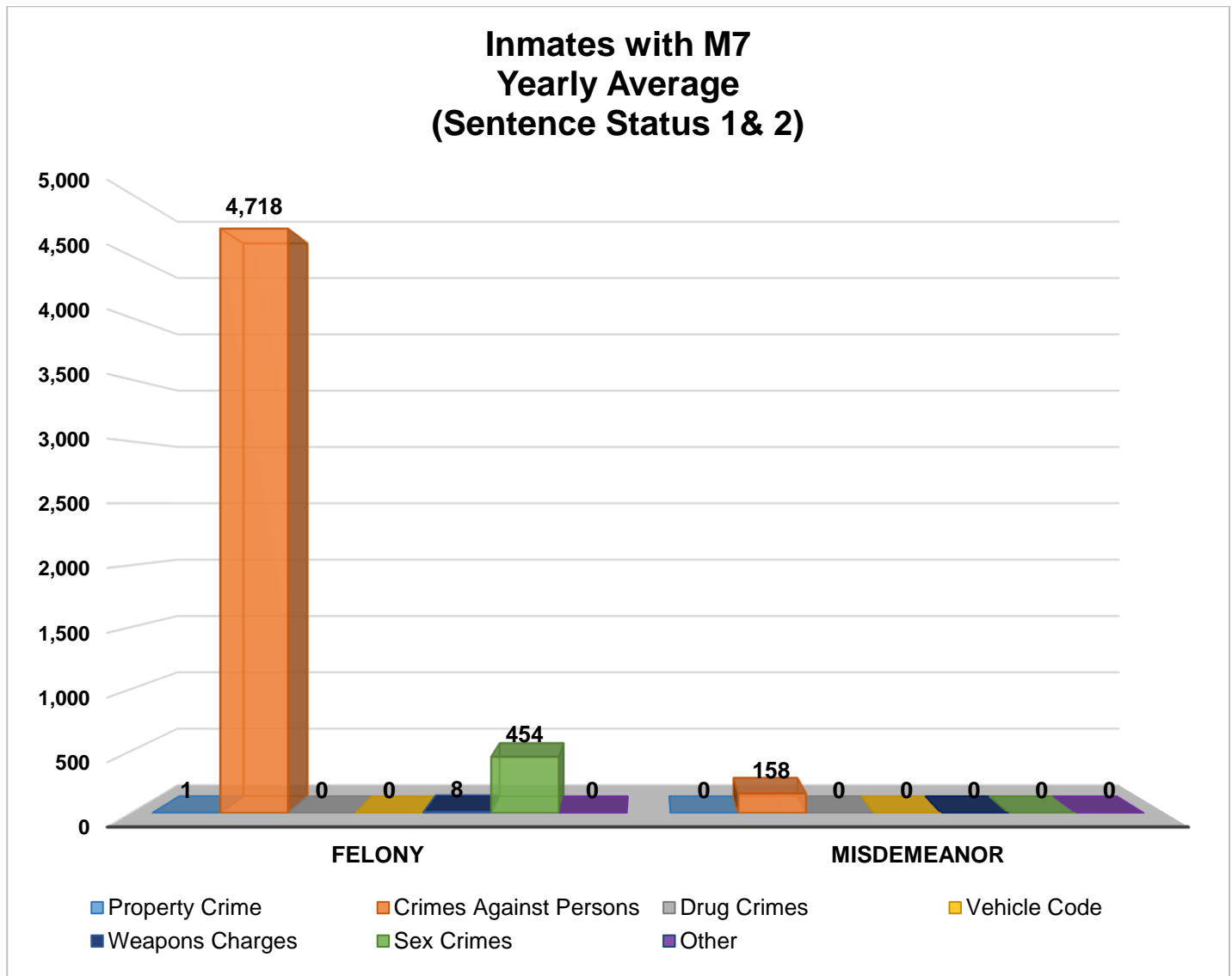
## INMATES WITH ASSAULTIVE/VIOLENT CHARGES (M7)

The chart below provides a breakdown for the inmate population with M7 charges, sentence status one and two, by arrest category.

Inmates with Assaultive/Violent Charges (M7) (Sentence Status 1 & 2)

Arrest Category	Property Crimes	Crimes Against Persons	Drug Crimes	Vehicle Code	Weapons Charges	Sex Crimes	Other	Total	Percentage of Sentence Status 1 & 2 Population
Felony	1	4,718	0	0	8	454	0	5,181	97%
Misdemeanor	0	158	0	0	0	0	0	158	3%
<b>Total</b>	<b>1</b>	<b>4,876</b>	<b>0</b>	<b>0</b>	<b>8</b>	<b>454</b>	<b>0</b>	<b>5,339</b>	<b>100%</b>

*\*Information contained is based on a snapshot of the daily inmate population purged every Tuesday.*

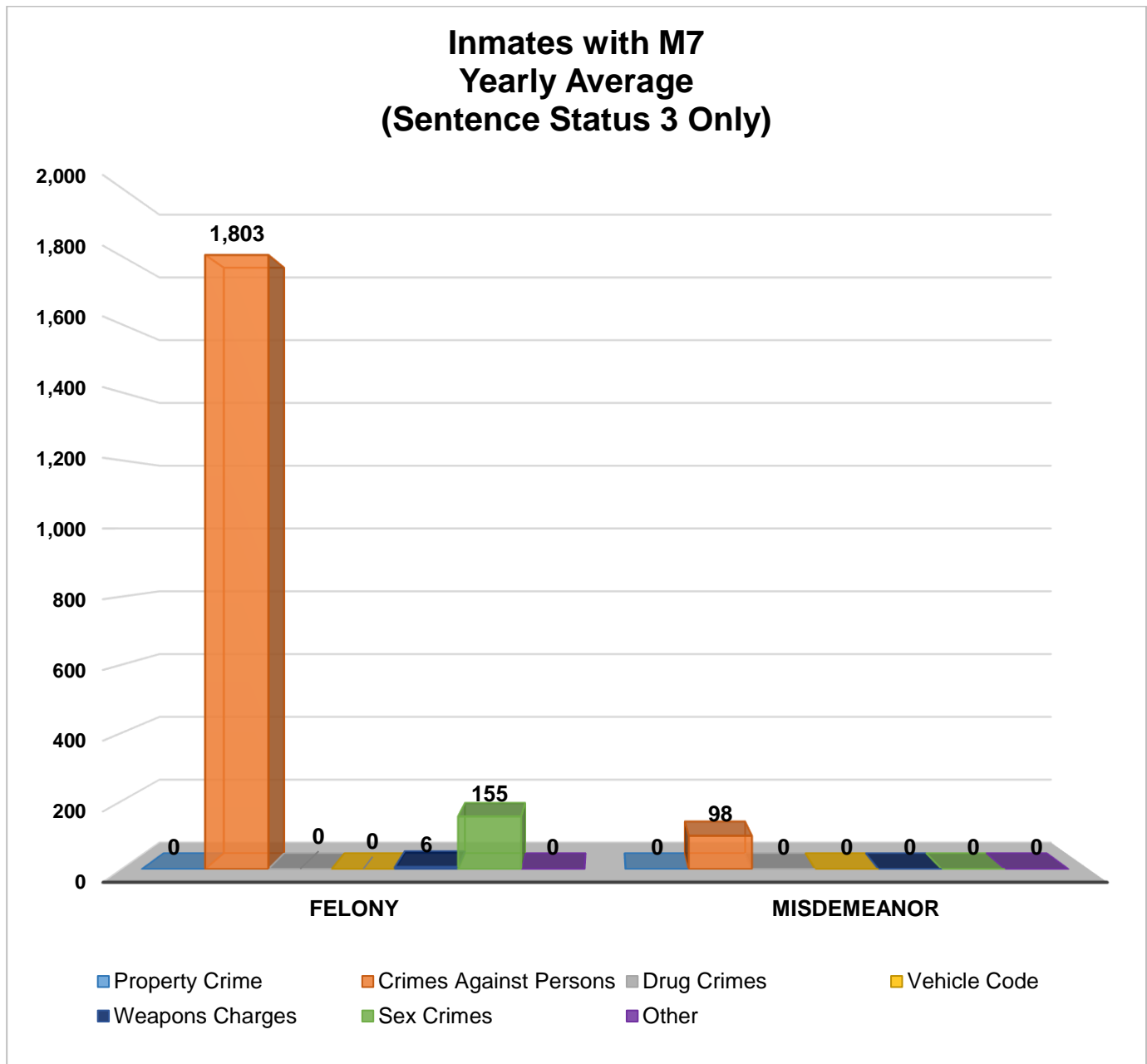


## INMATES WITH ASSAULTIVE/VIOLENT CHARGES (M7) CONTINUED

Inmates with Assaultive/Violent Charges (M7) (Sentence Status 3 Only)

Arrest Category	Property Crimes	Crimes Against Persons	Drug Crimes	Vehicle Code	Weapons Charges	Sex Crimes	Other	Total	Percentage of Sentenced Population
<b>Felony</b>	0	1,803	0	0	6	155	0	1,964	95%
<b>Misdemeanor</b>	0	98	0	0	0	0	0	98	5%
<b>Total</b>	0	1,901	0	0	6	155	0	2,062	100%

*\*Information contained is based on a snapshot of the daily inmate population purged every Tuesday.*



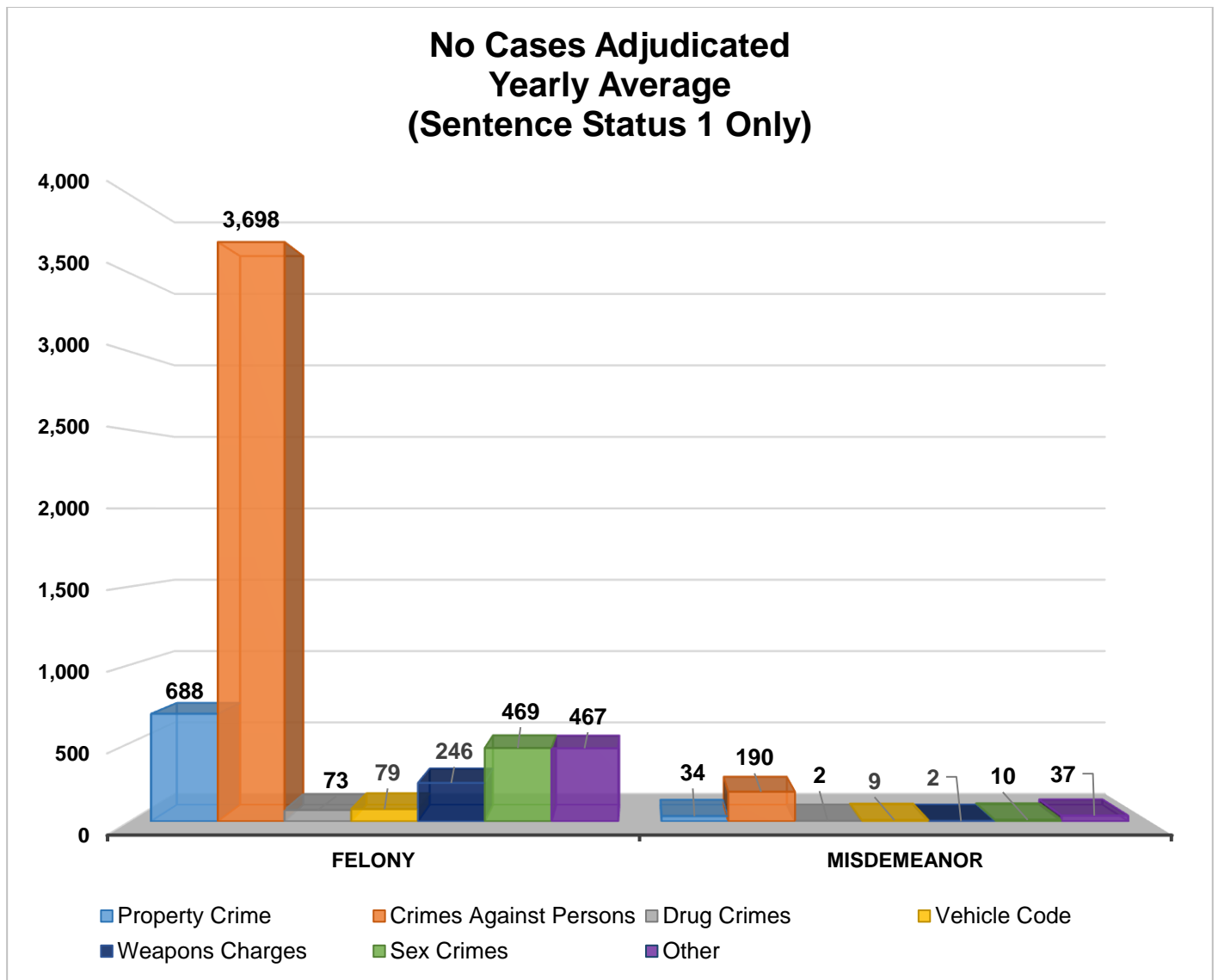
## No CASES ADJUDICATED

The chart below provides a breakdown of inmates with an open case and have not been sentenced by the courts, along with court returnees.

### No Cases Adjudicated (Sentence Status 1 only)

Arrest Category	Property Crimes	Crimes Against Persons	Drug Crimes	Vehicle Codes	Weapons Charges	Sex Crimes	Other	Total	Percentage of the Sentence Status 1 Population
<b>Felony</b>	688	3,698	73	79	246	469	467	5,720	95%
<b>Misdemeanor</b>	34	190	2	9	2	10	37	284	5%
<b>Total</b>	722	3,888	75	88	248	479	504	6,004	100%

*\*Information contained is based on a snapshot of the daily inmate population purged every Tuesday.*



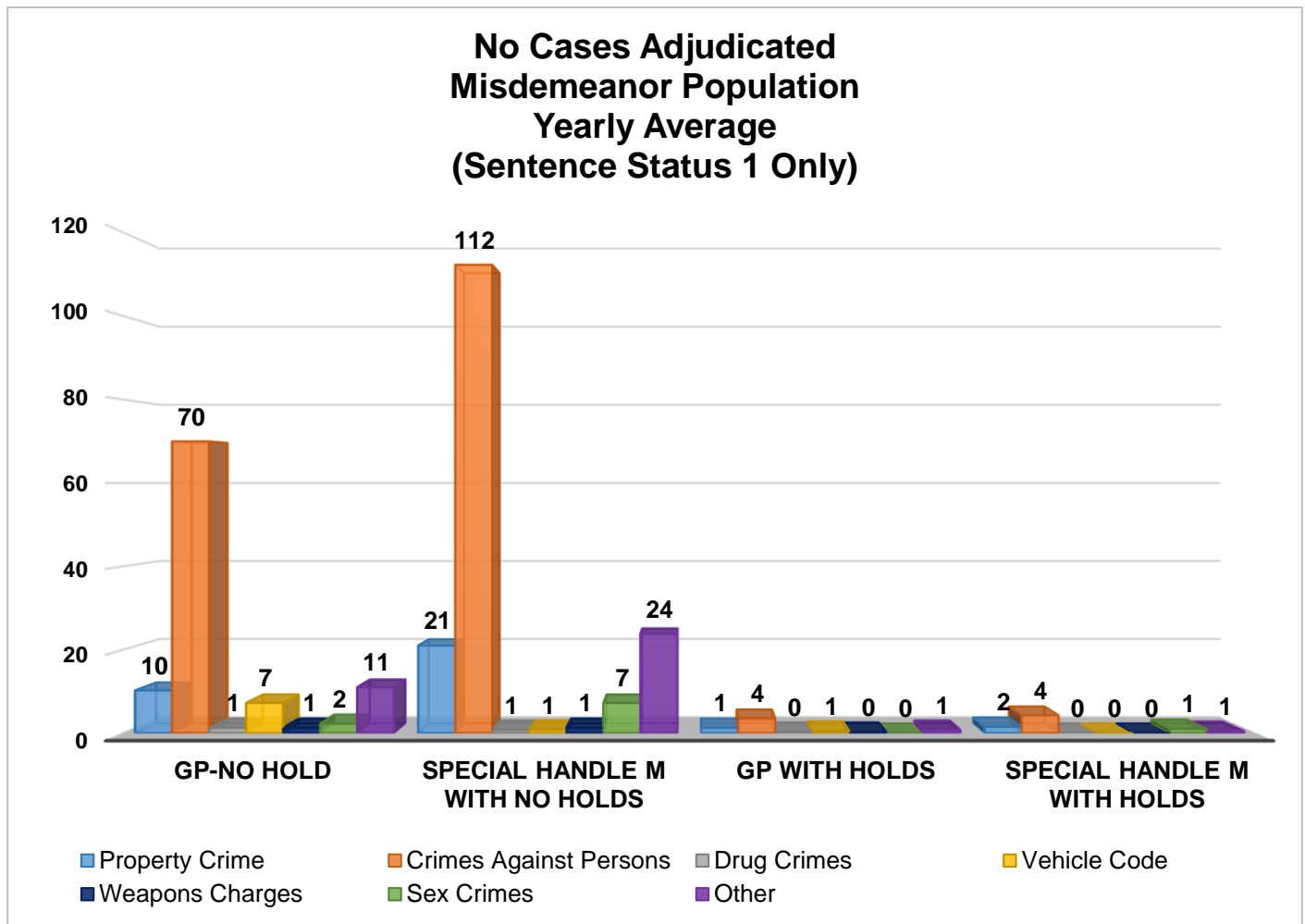
## No CASES ADJUDICATED MISDEMEANOR POPULATION

The chart below provides a breakdown for the inmate with open cases and have not been sentenced by the courts, along with court returnees, who are incarcerated for a misdemeanor and have not yet been convicted. "Holds" indicates the inmates are being held on a matter pending from an outside agency.

No Cases Adjudicated Misdemeanor Population (Sentence Status 1 only)

Arrest Category	Property Crime	Crimes Against Persons	Drug Crimes	Vehicle Code	Weapons Charges	Sex Crimes	Other	Total	Percentage of Sentence Status 1 Population
GP No Hold	10	70	1	7	1	2	11	102	36%
Special Handle M with No Holds	21	112	1	1	1	7	24	167	59%
GP with Holds	1	4	0	1	0	0	1	7	2%
Special Handle M with Holds	2	4	0	0	0	1	1	8	3%
<b>Total</b>	<b>34</b>	<b>190</b>	<b>2</b>	<b>9</b>	<b>2</b>	<b>10</b>	<b>37</b>	<b>284</b>	<b>100%</b>

*\*Information contained is based on a snapshot of the daily inmate population purged every Tuesday.*



## MENTAL HEALTH INMATE POPULATION

In 2021, the average inmate population was 14,576, the mental health population accounted for 40 percent of this population. Currently, inmates identified with mental health needs requiring specialized housing, moderate or high observation housing, account for 28 percent of the overall population. The remaining 12 percent of the total population have been treated and continue to receive psychotropic medication while housed in general population.



\*Information contained is based on a snapshot of the daily inmate population purged every Tuesday.

## MISDEMEANOR INCOMPETENT TO STAND TRIAL

County jail houses inmates who are awaiting trial for misdemeanor charges who have been found to be incompetent to stand trial (MIST). This year, the average number of inmates on MIST is 273.

Misdemeanor Incompetent to Stand Trial (MIST)														
Quarter 1			Quarter 2			Quarter 3			Quarter 4			Yearly Average		
Male	Female	Total	Male	Female	Total	Male	Female	Total	Male	Female	Total	Male	Female	Total
140	37	177	171	47	218	280	72	352	257	89	346	212	61	273

*\*Information contained is based on a snapshot of the daily inmate population purge every Tuesday.*

## AMERICANS WITH DISABILITIES ACT

Americans with Disabilities Act (ADA) Housing is used to accommodate inmates with mobility limitations and/or physical disabilities. This year, the average number of inmates requiring ADA is 376.

Americans With Disabilities Act (ADA)					
Disability	Quarter 1	Quarter 2	Quarter 3	Quarter 4	Yearly Average
Seeing Impaired – I	11	11	13	10	11
Hearing Impaired –D	9	8	9	6	8
Wheelchair –W	211	208	207	208	209
Mobility Impaired –U	156	156	134	145	148
<b>Yearly Total</b>	<b>387</b>	<b>383</b>	<b>363</b>	<b>369</b>	<b>376</b>

*\*Information contained is based on a snapshot of the daily inmate population purge every Tuesday.*

## MEDICAL HOUSING

Medical Outpatient/ Specialty Housing (MOSH) is provided to inmates who require a level of medical treatment beyond that of stabilized medication distribution (pill call). The MOSH area in Men's Central Jail (MCJ) is also used to house inmates with mobility issues.

Additional Medical Housing					
Housing Area	Quarter 1	Quarter 2	Quarter 3	Quarter 4	Yearly Average
Correctional Treatment Center (CTC)	99	93	110	101	101
Los Angeles County Medical Center (LCMC)	21	21	28	25	24
*MCJ Medical/Clinic	427	428	394	379	407
<b>Yearly Total</b>	<b>547</b>	<b>542</b>	<b>532</b>	<b>505</b>	<b>532</b>

*\*Includes some ADA Housing.*

*\*\*Data are averages gathered from Facility Count Sheet every Tuesday.*

# **IN-CUSTODY PROGRAMS**



## LA COUNTY INMATE IN-CUSTODY PROGRAMS

The Los Angeles County Jail offers several in-custody programs. Programs vary from a number of in-custody work assignments, vocational job training, education, and life skill classes, as well as fire camp training and California Department of Corrections and Rehabilitation fire camp placement for AB109 inmates. Various programs awarded sentenced inmates additional time credits for their participation pursuant to the California Penal Code:

### CREDIT EARNINGS

Program	Penal Code	Credit Earned	Type of Inmate
<b>Sentenced GT/WT</b>	4019 PC	Day-for-Day (1:1)	All Sentenced Inmates
<b>Conservation</b>	4019.1 PC	One and one half-for One (1.5:1)	All Sentenced Inmates
<b>Fire Camp</b>	4019.2 PC	Two-for-One (2:1)	AB109 Sentenced Inmates
<b>Milestone</b>	4019.4 PC	Up to 6 weeks per year	AB109 Sentenced Inmates

### CONSERVATION WORK PROGRAM

The Conservation Work Program (CWP) allows inmates to complete their adjusted sentence while working in various job classifications, giving them the skills and work discipline necessary to increase their chances of success once released. Effective January 2015, all sentenced offenders, including Traditional County Sentenced (TCS) inmates are eligible to receive credits pursuant to Penal Code Section 4019.1. In 2021, approximately 1,754 offenders (12% of the population) participated in CWP.

<b>CONSERVATION WORK PROGRAM (CWP)</b>					
INMATE TYPE	Quarter 1	Quarter 2	Quarter 3	Quarter 4	Yearly Average
INMATES PARTICIPATED IN PROGRAMS	1,730	1,769	1,844	1,671	1,754

*\*Information contained is based on a snapshot of the daily inmate population purge every Tuesday.*

### EDUCATION BASED INCARCERATION PROGRAMS

The Education Based Incarceration Program (EBI) uses traditional and non-traditional education which is designed to reduce incarceration by increasing the educational, civic, social, economic, and life skills of its participants. Offenders who are sentenced are eligible to receive credits pursuant to Penal Code 4019.4. In 2021, a total of **30** Milestone credits were awarded.

*\*The EBI school program was limited due to COVID-19.*

## **FIRE CAMP TRAINING PROGRAM**

Fire Camp Training and California Institute for Women (CIW) training are aligned under the CWP. This program is the first step of training before an inmate may participate in a State facilitated Fire Camp Program overseen by the CDCR. Offenders who are sentenced under AB109 are eligible to receive credits pursuant to Penal Code 4019.1. The average number of inmates enrolled in the Fire Camp training program for 2021 was 6.

<b>FIRE CAMP TRAINING CAMP</b>					
<b>HOUSING TYPE</b>	<b>Quarter 1</b>	<b>Quarter 2</b>	<b>Quarter 3</b>	<b>Quarter 4</b>	<b>Yearly Average</b>
PDC FIRE CAMP TRAINING (MEN)	7	4	4	3	5
CIW FIRE TRAINING (WOMEN)	2	1	1	0	1
<b>TOTAL</b>	<b>9</b>	<b>5</b>	<b>5</b>	<b>3</b>	<b>6</b>

## **CALIFORNIA DEPARTMENT OF CORRECTIONS AND REHABILITATION** **FIRE CAMP PROGRAM**

Once an inmate passes all necessary requirements in the Fire Camp Training Program located at Pitchess Detention Center (PDC) East facility, they are transferred to one of five state contracted fire camp sites where they will serve the remainder of their adjusted sentence. Offenders who are sentenced under AB109 are eligible to receive credits pursuant to Penal Code 4019.2. The average number of inmates assigned to CDCR Fire Camps for 2021 was 5.

<b>CDCR FIRE CAMP</b>					
<b>FIRE CAMP LOCATION</b>	<b>Quarter 1</b>	<b>Quarter 2</b>	<b>Quarter 3</b>	<b>Quarter 4</b>	<b>Yearly Average</b>
ACTON FIRE CAMP	2	0	1	1	1
FRANCISQUITO FIRE CAMP	2	1	1	1	1
HOLTON FIRE CAMP	1	0	0	0	0
JULIUS KLEIN FIRE CAMP	3	3	2	0	2
MALIBU WOMENS FIRE CAMP	2	1	1	1	1
<b>TOTAL</b>	<b>10</b>	<b>5</b>	<b>5</b>	<b>3</b>	<b>5</b>

## **BACK ON TRACK PROGRAM**

The Back on Track (BOT) program began in February 2015 and is overseen by EBI staff. The program delivers education and comprehensive reentry services to offenders before and after a participant is released from jail. The program focuses on the critical time following an inmate's release from jail, by providing the seamless reentry services vital for success, including employment and life skill services. This program is available to inmates who have been sentenced under AB109 and are eligible to receive Milestone credits. They must be enrolled in the program for 18 months—divided into 9 months in-custody and 9 months out-of-custody.

<b>BACK ON TRACK</b>	<b>Quarter 1</b>	<b>Quarter 2</b>	<b>Quarter 3</b>	<b>Quarter 4</b>	<b>Yearly Average</b>
SOUTH BARRACK	7	8	5	4	6

## **IN-CUSTODY SUBSTANCE TREATMENT AND REENTRY TRANSITION**

The jail based Substance Treatment and Reentry Transition (START) treatment services provides substance use disorder (SUD) treatment services at the different jail facilities. Treatment services include screening, clinical assessment, group and individual counseling, case management services, medication assisted treatment, re-entry planning and care coordination.

<b>In-Custody START (CRDF)</b>	<b>Quarter 1</b>	<b>Quarter 2</b>	<b>Quarter 3</b>	<b>Quarter 4</b>	<b>Yearly Average</b>
Enrolled	23	24	44	32	31
Completed	0	5	7	8	5
<b>In-Custody START (MCJ)</b>	<b>Quarter 1</b>	<b>Quarter 2</b>	<b>Quarter 3</b>	<b>Quarter 4</b>	<b>Yearly Average</b>
Enrolled	55	60	54	62	58
Completed	0	11	13	15	10
<b>In-Custody START (PDC)</b>	<b>Quarter 1</b>	<b>Quarter 2</b>	<b>Quarter 3</b>	<b>Quarter 4</b>	<b>Yearly Average</b>
Enrolled	41	61	58	59	55
Completed	7	14	11	12	11
<b>In-Custody START (TTCF)</b>	<b>Quarter 1</b>	<b>Quarter 2</b>	<b>Quarter 3</b>	<b>Quarter 4</b>	<b>Yearly Average</b>
Enrolled	13	23	3	0	10
Completed	0	6	1	0	2

# **ALTERNATIVES TO CUSTODY PROGRAMS**

## ALTERNATIVES TO CUSTODY PROGRAMS

The Community Transition Unit (CTU), the Community Based Alternatives to Custody Unit (CBAC), and the Compliance Team work together by utilizing a variety of alternatives to custody programming options in an effort to enhance an inmate’s chance of success upon release. These programs are conducted in collaboration with local agencies including Community and Faith Based Organizations, Department of Mental Health (DMH), Department of Public Health (DPH), and other organizations. It is the Department’s goal to program inmates from intake through re-entry into the community. With this approach, we hope to increase public safety and reduce the rate of recidivism.

Supported by release planning overseen by the CTU, and in partnership with contracted services, inmates are provided re-entry assistance through linkages to services that are initiated while they are in-custody and continued upon release. Through the Alternatives to Custody (ATC) programs, qualifying inmates are afforded the opportunity to complete the remaining portion of their sentence in a community treatment program. Inmates who do not qualify for ATC due to security or other reasons are referred to community providers for re-entry assistance.

The ATC programs include:

### SUBSTANCE TREATMENT AND REENTRY TRANSITION PROGRAM

The Substance Treatment and Reentry Transition (START) program is a DPH, Substance Abuse Prevention Control (SAPC) funded program that places eligible male and female inmates into residential SUD treatment programs on electronic Global Positioning System monitoring as ATC program.

### FEMALE PROGRAMS

The Female Programs are funded through community grants. They work directly with various residential programs approved by the Department, but not affiliated with the START program, and they offer treatment beds for inmates under the ATC program. Several programs cater to specific clientele who fit a specified demographic in regards to age and gender.

### VETERAN’S ADMINISTRATION

The Veteran’s Administration (VA) funds SUD residential treatment, under the ATC program for inmates who are confirmed to be a veteran entitled to VA benefits. The treatment programs are approved by the VA and are vetted by personnel from PMB/CTU.

Program Yearly Statistics	Enrolled				Completed				Returned to Custody				Absconded			
	Q1	Q2	Q3	Q4	Q1	Q2	Q3	Q4	Q1	Q2	Q3	Q4	Q1	Q2	Q3	Q4
START	3	7	6	7	3	3	3	4	1	2	1	0	0	1	1	0
Female Programs	0	0	0	0	0	0	0	0	0	0	0	0	0	0	0	0
Veterans	0	0	0	0	0	0	0	0	0	0	0	0	0	0	0	0
<b>Quarterly Total</b>	<b>3</b>	<b>7</b>	<b>6</b>	<b>7</b>	<b>3</b>	<b>3</b>	<b>3</b>	<b>4</b>	<b>1</b>	<b>2</b>	<b>1</b>	<b>0</b>	<b>0</b>	<b>1</b>	<b>1</b>	<b>0</b>
<b>Annual Total</b>	<b>23</b>				<b>13</b>				<b>4</b>				<b>2</b>			

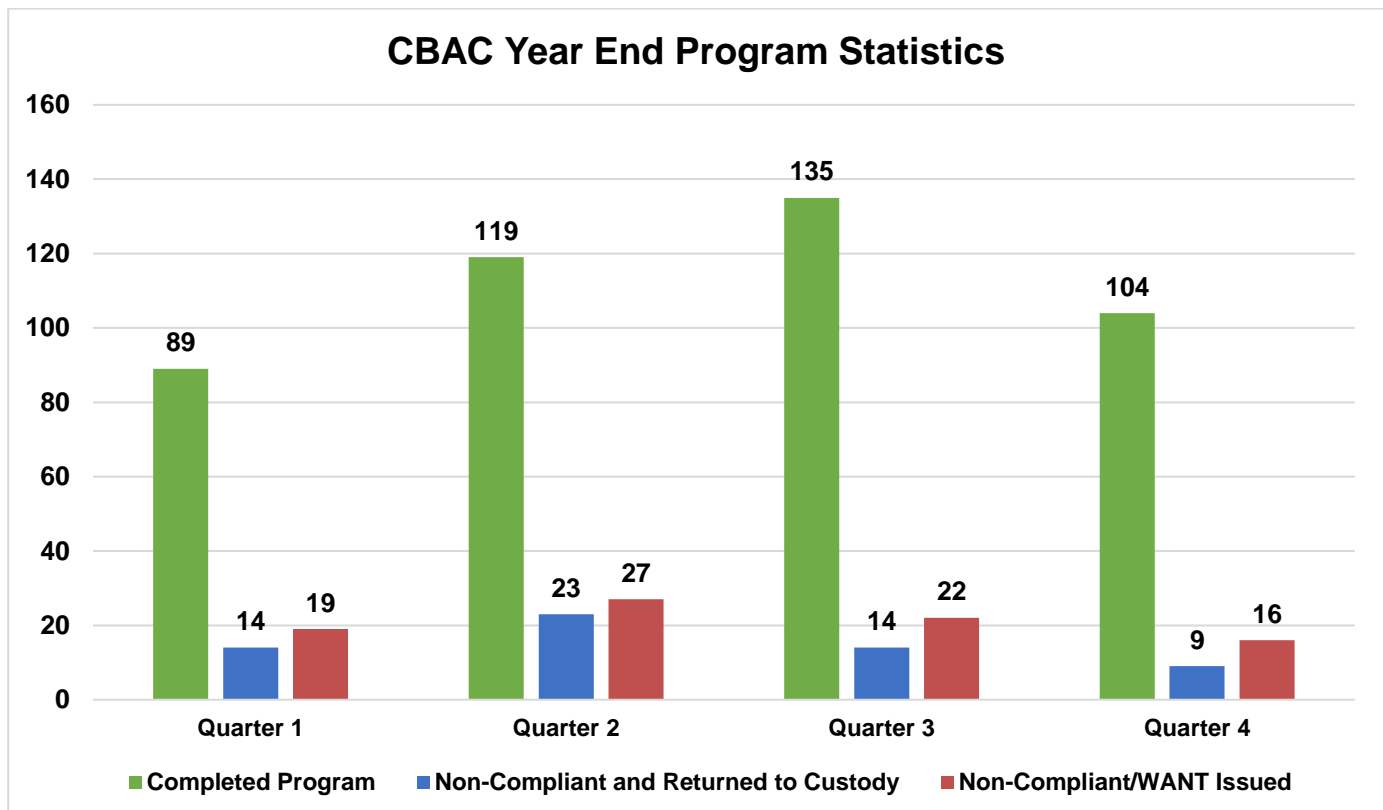
*\*Referrals and placements to the START community program are on hold pending execution of a new memorandum of agreement.*

## COMMUNITY BASED ALTERNATIVES TO CUSTODY

The PMB's Community Based Alternatives to Custody (CBAC) unit identifies low risk sentenced offenders within the jail population who qualify to finish their remaining sentence in an out-of-custody alternative environment. Although these individuals are outside of traditional custody, they are still under the jurisdiction of the Department.

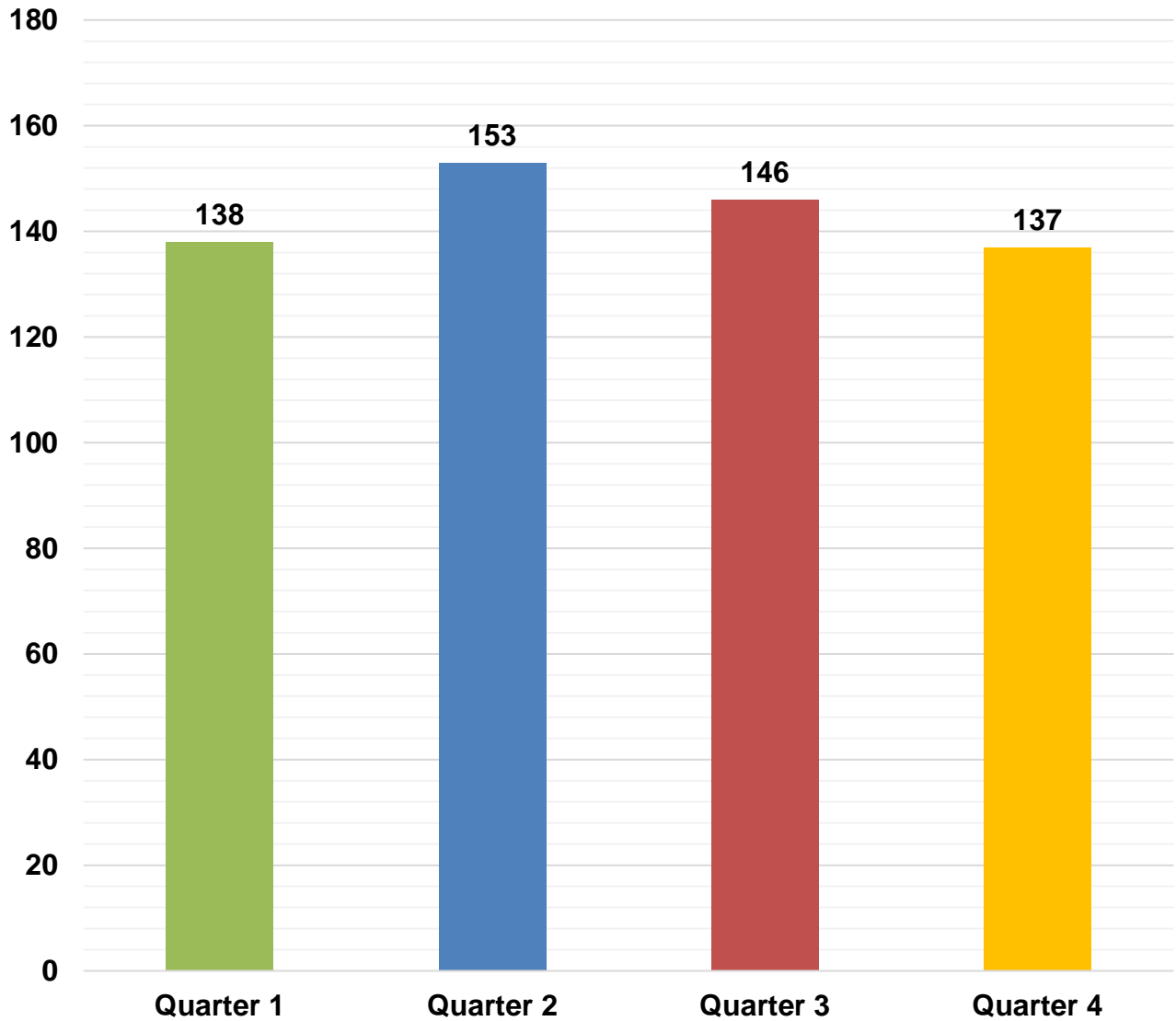
<b>CBAC YEARLY PLACEMENT</b>												
PROGRAM	Quarter 1			Quarter 2			Quarter 3			Quarter 4		
	M	F	TOTAL	M	F	TOTAL	M	F	TOTAL	M	F	TOTAL
ELECTRONIC MONITORING	23	7	30	23	4	27	28	16	44	32	8	40
WEEKENDER WORK	28	0	28	50	5	55	37	1	38	47	1	48
WORK RELEASE	81	11	92	66	10	76	68	12	80	51	8	59
<b>TOTAL</b>	<b>132</b>	<b>18</b>	<b>150</b>	<b>139</b>	<b>19</b>	<b>158</b>	<b>133</b>	<b>29</b>	<b>162</b>	<b>130</b>	<b>17</b>	<b>147</b>

The graph below depicts the total number of offenders who successfully completed the remainder of their sentence on a CBAC program. It also shows the number of offenders who failed to complete the program and with the efforts of the PMB Compliance Unit, were returned back to finish their sentence and those who failed to complete the program and were not returned back to custody.



**LA COUNTY ALTERNATIVES TO CUSTODY INMATE POPULATION**

**2021 Yearly  
Los Angeles County Alternative to Custody Inmate Count**



<b>2021 Yearly ATC ADIP</b>
<b>144</b>

*Includes Community Based Alternatives to Custody (CBAC), Fire Camp, and inmate station workers.*

# **RE - ENTRY ASSISTANCE**



## COMMUNITY RE-ENTRY AND RESOURCE CENTER

The information below represents recently released inmates and inquiries and/or contacts made by members of the general public who have been assisted with services at the Community Re-entry and Resource Center (CRRC) for 2021:

<b>Inquiry Demographic Population</b>	<b>Quarter 1</b>	<b>Quarter 2</b>	<b>Quarter 3</b>	<b>Quarter 4</b>	<b>Total</b>	<b>Average</b>
General Release	1,258	1,235	1,224	1,349	<b>5,066</b>	<b>1,267</b>
General Public	261	276	262	253	<b>1,052</b>	<b>263</b>
Alternatives to Custody Program	0	0	3	0	<b>3</b>	<b>1</b>
Coordinated Release	143	243	251	269	<b>906</b>	<b>227</b>
Work Release	6	4	4	6	<b>20</b>	<b>5</b>
Phone Referral	2	0	0	0	<b>2</b>	<b>1</b>
<b>Total</b>	<b>1,670</b>	<b>1,758</b>	<b>1,744</b>	<b>1,877</b>	<b>7,049</b>	<b>1,762</b>

<b>Inquiry Demographic Gender</b>	<b>Quarter 1</b>	<b>Quarter 2</b>	<b>Quarter 3</b>	<b>Quarter 4</b>	<b>Total</b>	<b>Average</b>
Male	1,140	1,088	1,031	1,099	<b>4,358</b>	<b>1,090</b>
Female	572	719	757	790	<b>2,838</b>	<b>710</b>
<b>Total</b>	<b>1,712</b>	<b>1,807</b>	<b>1,788</b>	<b>1,889</b>	<b>7,196</b>	<b>1,800</b>

CTU personnel visit the Inmate Reception Center release area to educate and remind inmates waiting to go home about services available at the CRRC. Walks of the release area are performed every 90 minutes.

	<b>Quarter 1</b>	<b>Quarter 2</b>	<b>Quarter 3</b>	<b>Quarter 4</b>	<b>Total</b>	<b>Average</b>
Number of 90 Minute Contact Walks	153	93	20	51	<b>317</b>	<b>79</b>
Number of Inmates Contacted	3,004	2,247	578	1,645	<b>7,474</b>	<b>1,869</b>
Number of Flyers Distributed	813	447	358	83	<b>1,701</b>	<b>425</b>

*\*Statistical table provided by CTU.*

## CTU COORDINATED RELEASES TO VARIOUS PROGRAMS

The final 90 days leading to an inmate's release from custody are the most critical in ensuring a successful transition from Custody to Community Based Organization (CBO) Treatment Centers. During the time leading up to their release, inmates are interviewed several times by the CBO Staff and members of the Community Transition Unit to ensure that they are matched up with a suitable treatment provider.

The coordinated release process helps to create a trust between law enforcement, inmate participants, and CBO's. The CTU's ultimate goal is to provide a successful recovery and re-entry into the community and to ultimately decrease recidivism.

	<b>Quarter 1</b>	<b>Quarter 2</b>	<b>Quarter 3</b>	<b>Quarter 4</b>	<b>Total</b>	<b>Average</b>
Coordinated Releases	543	572	404	439	<b>1,958</b>	<b>490</b>

## CTU VITAL RECORDS

Through the Vital Records Program, Department staff members have been deputized by the County Registrar-Recorder to facilitate birth certificate applications for inmates born in Los Angeles County, who have requested a certified copy. The fee of \$28 for certified copies of birth certificates is funded by the Inmate Welfare Fund.

All inmates in custody are eligible to apply for a replacement California Identification Card. The issued ID's are provided to the inmates upon their release. The inmates must still report to the California Department of Motor Vehicles (DMV) to obtain a driver license following their release.

Records Processed	Quarter 1	Quarter 2	Quarter 3	Quarter 4	Total	Average
DMV - California Identification Card	724	834	538	516	<b>2,612</b>	<b>653</b>
RECORDS – Birth Certificate	520	596	563	522	<b>2,201</b>	<b>550</b>
<b>Total</b>	<b>1,244</b>	<b>1,430</b>	<b>1,101</b>	<b>1,038</b>	<b>4,813</b>	<b>1,203</b>

Records Issued	Quarter 1	Quarter 2	Quarter 3	Quarter 4	Total	Average
DMV - California Identification Card	236	426	302	409	<b>1,373</b>	<b>343</b>
RECORDS – Birth Certificate	986	1,375	483	449	<b>3,293</b>	<b>823</b>
<b>Total</b>	<b>1,222</b>	<b>1,801</b>	<b>785</b>	<b>858</b>	<b>4,666</b>	<b>1,166</b>