



- East L.A. College
- L.A. City College
- L.A. Harbor College
- L.A. Mission College
- L.A. Pierce College
- L.A. Trade Tech College
- L.A. Valley College
- Southwest College
- West L.A. College

2021

Table of Contents

Background Analysis	2
Performance Measures Metrics:	
Prevention of Crime	2
Mental Health Strategy	3
Responsiveness	4
Effective Monitoring of Property	4
Personnel Management	5
Emergency Response Planning and Preparedness	5
COVID-19 Response	6
Campus Safety and Crime Prevention	
Los Angeles City College	7
Van De Kamp Innovation Campus	11
East Los Angeles College	13
Los Angeles Harbor College	18
Los Angeles Mission College	22
Los Angeles Pierce College	26
Los Angeles Southwest College	30
Los Angeles Trade Technical College	34
Los Angeles Valley College	38
West Los Angeles College	42
Summarized Annual Survey Results	47
Attachment: Detailed Crime Statistics by Campus	101



Los Angeles Community College District

SUBJECT: PERFORMANCE MEASURES REPORT
Contract year 2020

INITIATED BY: Dr. Francisco Rodriguez, Chancellor
Los Angeles Community College District
John P. Gannon, Captain
Los Angeles County Sheriff's Department - Community College Bureau

BACKGROUND ANALYSIS

The Los Angeles County Sheriff's Department's Community College Bureau has provided contract law enforcement and security services to the Los Angeles Community College District (LACCD) since 2001. LACCD is the largest community college district in the nation providing academic and vocational programs to a full-time student population of approximately 150,000 per semester (during Non-COVID times). LACCD serves more than 36 cities in an 882 square mile area. The LACCD comprises 8% of all California community college enrollments. Ten school districts feed into LACCD, including the Los Angeles Unified School District. Two LACCD colleges, Southwest and Harbor Colleges, house Los Angeles Unified high schools, while the Van De Kamp Innovation Campus houses a 500-student Environmental Science and Technology High School (ESAT).

LACCD continues to be a safe environment for its staff and students and has experienced a decrease of 54% in overall crime districtwide. During the Non-COVID period of 2020, Sheriff's personnel focused their efforts on patrolling the colleges and providing a safe environment conducive to teaching and learning. During the COVID period of 2020, Sheriff's personnel focused their efforts on securing campuses in support of Governor Newsome's "Safer At Home" order. Sheriff's Department personnel, college officials, and members of the District regularly examined crime statistics to identify problem areas and adjusted resource deployment as appropriate.

The Sheriff's Department supports the continued use of surveillance cameras to deter crime, monitor colleges for illegal activities and as an aid in investigations. The surveillance cameras have reportedly helped to identify or gather information about suspect(s) involved in criminal activities on numerous occasions.

PREVENTION OF CRIME

Community College Bureau strives to provide staff and student safety at all our colleges allowing students to direct their full focus on the outstanding educational programs offered by the District. Our policing model includes proactive, collaborative campus community policing strategies, high-visibility patrols to help deter campus crime, and renewed emphasis on our health and human services role in helping others. To this end, Community College Bureau

seeks to re-establish dedicated mental health threat assessment teams and added emphasis on community oriented policing strategies including crime reduction through environmental design, more frequent positive interactions among students and our highly engaging personnel offering assistance and escorts to staff and students. Going the extra mile should be reflected in annual satisfaction surveys, being approachable to make students and staff feel comfortable talking to college deputies and security officers, training, education, and outreach to our college communities by providing classes, distributing information fliers, and the use of social media.

For a detailed breakdown of crime statistics, please refer to Attachment II.

The following LACCD colleges are located within the Los Angeles Police Department's (LAPD) jurisdiction: Harbor; City; Pierce; Valley; Mission; Trade Tech; and the District's satellite campus, Van De Kamp Innovation Campus. East Los Angeles College is located within Monterey Park Police Department's jurisdiction, while East Los Angeles College's satellite campus is located within Southgate Police Department's jurisdiction. West Los Angeles College is located within Culver City Police Department's and LASD jurisdiction while Southwest College is located within LASD South LA Station jurisdiction. Part of our continued success is due, in part, to our close relationships with our partner stations and agencies.

During emergencies, students and staff are immediately notified via text alerts, social media, and emails, with updated information that provides suggestions for their safety. The Bureau also provides crime statistics to each campus annually to generate their annual reports, in compliance with the Jeanne Clery Act. The Bureau maintains a "Public Crime Log" at each campus Sheriff's Station, in accordance with the Crime Statistics Act of the United States Government.

MENTAL HEALTH STRATEGY

Having a comprehensive mental health threat assessment strategy for the nation's largest community college district is vitally important. The mission of Higher Education Assessment Team (HEAT) was to identify the needs of students who presented mental health concerns. When the Sheriff's Department was provided with a referral for a student, staff member, or anyone with a nexus to the colleges, our HEAT teams worked collaboratively with the school to begin the "Violence Threat Risk Assessment" process. A partnership approach was utilized to mitigate threat/risk in working with existing providers such as the Los Angeles County Department of Mental Health (DMH), existing college resources, veteran's service providers, family, friends, and other outside agencies. The ultimate goals of campus safety and student success was enhanced when HEAT teams were part of our campus policing strategy.

These embedded mental health teams were part of a comprehensive campus community policing strategy. Our collaborative HEAT teams were "best practice" and a first in the nation. Looking forward, new opportunities exist to involve highly-trained Risk Assessment Management Program (RAMP) deputies to consult and assist with HEAT cases.

Thanks to the Los Angeles County Department of Mental Health (DMH), the Community College Bureau had two full-time dedicated clinicians, Dr. Nicholas Beliz, a clinical psychologist, and Taia Davis, a licensed clinical social worker. Each clinician was partnered with a deputy sheriff to form the prior HEAT Team. Thanks to the District, we had deputy sheriffs to partner with each clinician which was a requirement for the partnership with DMH.

Our HEAT teams responded throughout the district to address mental health concerns and threats from students, faculty or community members utilizing the district's facilities. Our goal was prevention through early intervention. It was our hope to reach out to those in crisis before they reached the breaking point that could potentially lead to on-campus violence.

The Los Angeles County Sheriff's Department, Los Angeles County Department of Mental Health and the Los Angeles Community College District were working together to identify the needs of students who presented mental health concerns. When the Sheriff's Department was provided with a referral, our HEAT team began the evaluation process. Part of the initial process included exploration of the student's behavioral history to identify existing areas of concern, including, but not limited to, presenting a danger to self or others. The HEAT team's main purpose was to enhance campus safety by identifying students with behavioral health concerns who may escalate and posed high-risk without mental health intervention.

RESPONSIVENESS

Everyone at the Bureau prides himself/herself in the timely handling of calls for service. Personnel are equipped with marked patrol vehicles, golf carts, bicycles, and T-3 devices (at some colleges), which allow them to cover large areas in a short amount of time. Calls for service are taken and tracked by student cadets at each campus. Not all campuses follow the same protocol to track calls for service, based on their staffing limitations and available resources. In 2021, safety and security of District campuses may be enhanced by implementing the early stages of what could evolve to become a centralized dispatch and desk operation adjacent to the Corporate Center Emergency Operations Center.

EFFECTIVE MONITORING OF PROPERTY

The men and women of the Community College Bureau are vigilant in reporting any issues which require attention during their patrols. The Bureau utilizes student cadets to augment patrol assignments performed by the deputies and security officers in order to increase parking enforcement and graffiti abatement programs.

Any necessary emergency repairs observed by Bureau personnel are immediately reported to the on-call plant facility staff for remedy. The majority of these observations and subsequent notifications are not logged and simply handled, due to a cohesive and good working relationship between our Bureau staff and District employees. For further details, please refer to the individual campus logs maintained by the District.

PERSONNEL MANAGEMENT

The Los Angeles County Sheriff's Department Community College Bureau is committed to providing outstanding law enforcement services conducive to enhancing the educational experience for LACCD students and staff. In order to achieve its goal of enhancing campus safety, the Bureau takes great pride in exceeding the minimum training standards required by Peace Officer Standards and Training (POST) and/or the California Business & Professions Code, complying with even-higher training standards set by the Sheriff's Department.

The Bureau has initiated several new programs, in addition to continuing the existing training curriculum for deputies and security officers. They include, but are not limited to:

- A comprehensive training program for newly assigned staff
- Report writing for security officers
- Emergency Vehicle Operation Center (EVOC) driver's training
- Less lethal weapons training (TASER, ARWIN, pepper ball)
- Impact weapons training
- CPR/first aid training
- Citizen contact and laws of arrest
- Bike training
- T3 training
- Tactical training, including but not limited to the clearing of buildings, crowd control, ongoing active shooter training, and riot control
- Mental health training classes
- Homelessness training
- Threat assessment training
- De-escalation training

Our training curriculums prepare security officers and cadets with the skill sets needed to provide outstanding law enforcement services. Additionally, these skill sets aid them in their career advancement. During the last several years, dozens of security officers and cadets have followed our career path to success, by becoming sworn law enforcement officers at various agencies.

EMERGENCY RESPONSE PLANNING AND PREPAREDNESS

Team leaders and supervisors are trained in Threat Assessment Team (TAT) protocol. The team is comprised of law enforcement officials, college administrators, and counselors. The team's objective is to quickly and thoroughly assess the level of threat to the campus and recommend a course of action in compliance with all applicable laws, the District, Department, and Bureau policies. Threat Assessment Teams are currently being implemented at all nine colleges.

Other endeavors taken on by this Bureau to enhance campus safety are the adoption of the Department of Homeland Security's "Run, Hide, Fight" campaign, as well as providing safety drills during student orientation week. The purpose of these programs is to train college staff, who are then able to pass these critical skills on to students. These basic lifesaving steps are utilized to increase survival in the event of an active shooter and provide students with a framework of expectations regarding first responder's actions during an emergency.

These progressive training programs are dynamic in nature and are constantly evaluated and reconstructed based on the most effective policing tactics. The Sheriff's Department and this Bureau constantly evaluate national and international incidents to update training programs and response procedures to better prepare for natural disasters, active shooters, or terrorist threats. The Sheriff's Department Emergency Operations Bureau (EOB) outlines detailed procedures in dealing with various emergencies. Furthermore, our Bureau Orders outline procedures unique to the college environment and are in compliance with EOB directives. In particular, Community College Bureau is constantly exploring new and creative approaches to our policing procedures, outreach with our student population, and overall safety of every campus.

COVID-19 RESPONSE

On, Governor Gavin Newsom issued Executive Order N-33-20, proclaiming a State of Emergency to exist in California as a result of the rapid spread of COVID-19. In turn, our college campuses were required to rapidly transition to remote learning. With the absence of students, faculty and the majority of college staff, the District tasked Community College Bureau personnel with locking down our campuses and closely ensuring that only pre-approved personnel were allowed onto college campuses. This was accomplished by the implementation of security check points staffed by Community College Bureau personnel. At the onset of the campus closures, Community College Bureau personnel staffing was initially increased at the direction of the District which resulted in very limited crime occurring on our college campuses during a time when nearby areas were experiencing an uptick in crime.

Community College Bureau personnel helped ensure safety in parking areas so students could access WiFi "hot spots" on campuses. Each college campus Sheriff's office also assisted with the distribution of computers, cameras, books and other school supplies for students and faculty throughout the year.

CAMPUS SAFETY AND CRIME PREVENTION

The remainder of this report details college specific statistics and information. Overall, crimes reported on campus decreased during 2020. In part, this reduction may be attributed to the temporary campus closures, security measures, and lockdowns during the pandemic.



Los Angeles City College

CAMPUS SAFETY AND CRIME PREVENTION

The college with the third highest enrollment within LACCD, Los Angeles City College, has experienced a 58% decrease in crime on campus. Los Angeles City College is in a region of Los Angeles with very high crime rates in the immediate surrounding area. Sheriff's personnel have worked very hard to keep the campus safe for students and staff despite the crime challenges in the area.

BUILDING ADDITIONS

Da Vinci Hall was completed in January of 2021 and will host all art classes beginning in the fall of 2021. There are currently 29 buildings, 5 modular bungalows, and 2 parking structures on campus with a combined total of 1.67 million square feet.

Student Population: 31,366

Campus Acreage: 47 acres

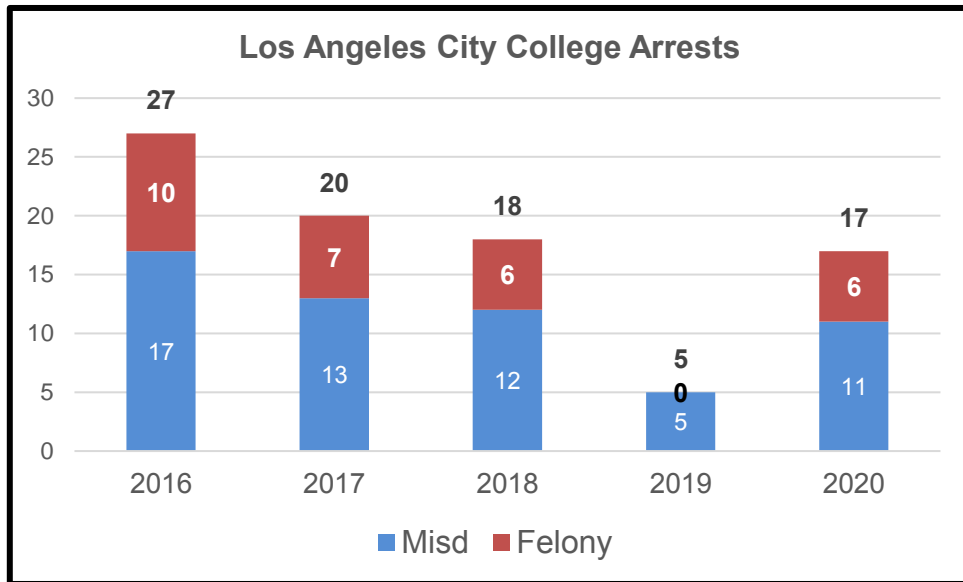
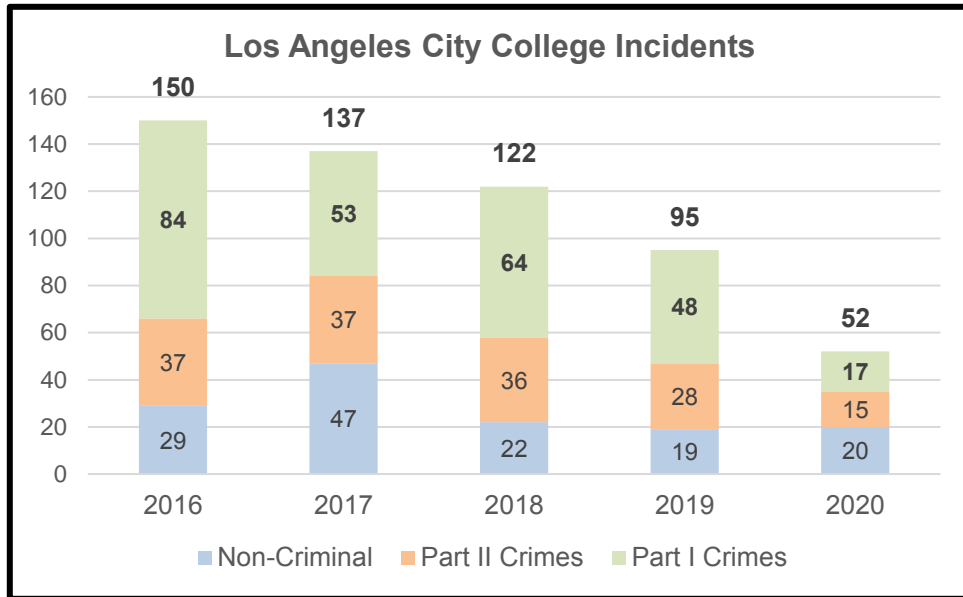
Buildings Sq. Ft: 1.67 million square feet

HIGHLIGHTS

Deputies along with security officers continued to train in areas of active shooter, Covid-19 response and safety, community policing and professional communication. Security personnel continuously attended faculty and staff meetings via Zoom™ to proactively engage with the college community and strengthen the relationship between the Sheriff's Department, faculty and staff. In addition, the LACC Sheriff's office assisted with the distribution of computers, cameras, books and other school supplies for students and faculty throughout the year. The Sheriff's office is currently serving as the central point of campus equipment distribution and return.

STAFFING LEVELS (Pre-Curtailment)

- 1 Team Leader
- 2 Deputies
- 14 Security Officers (Includes one at District Office)
- 3 Cadets



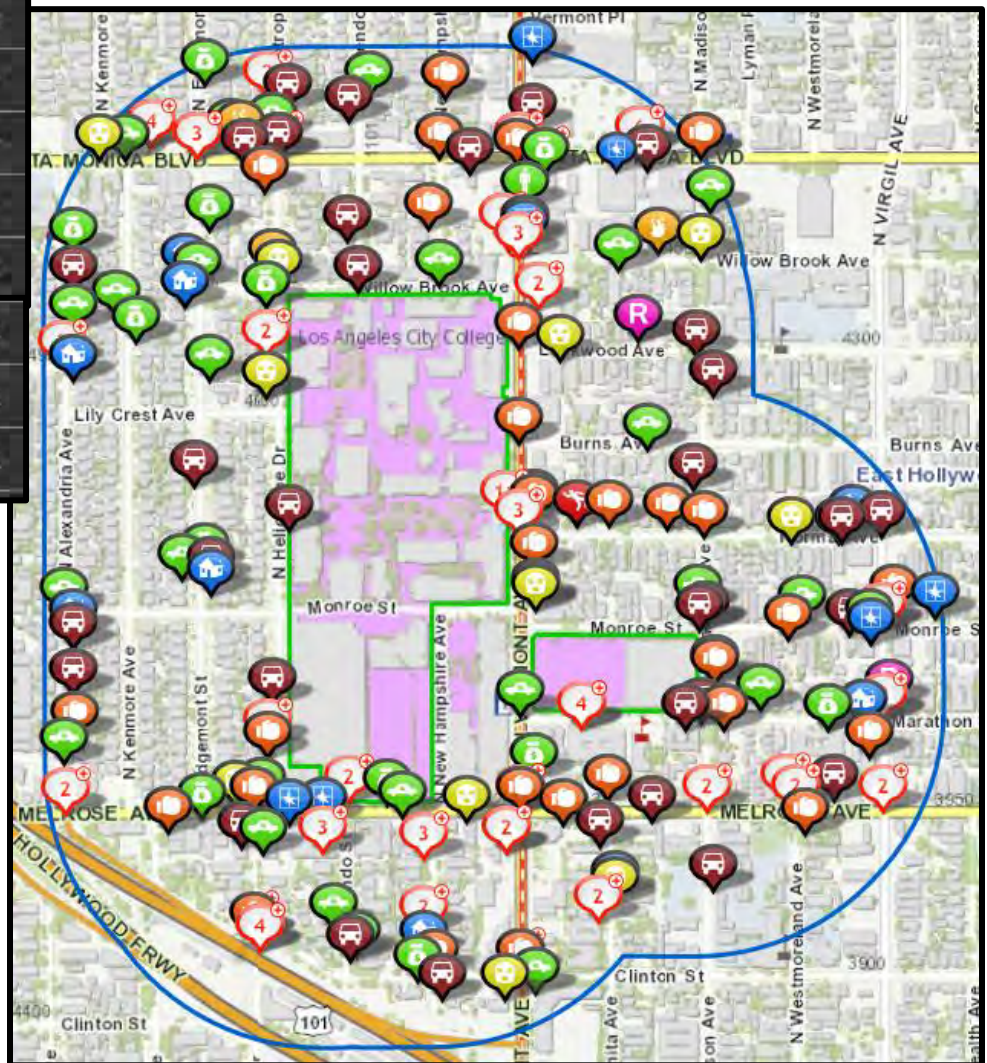


YEAR:	2016	2017	2018	2019	2020
Non-criminal Incidents on College campus	96	73	86	19	20
Incidents referred to Dean of Discipline	45	43	42	26	9
Disciplinary Hearings assisted by the Bureau	2	3	1	0	0
Watch Commander Service Comment Reports	0	0	0	3	2
Special Events staffed by the Bureau	10	8	9	10	0
Student Injury Reports	25	16	22	10	5
Students / Staff escorted throughout the campus	3922	4088	4135	4090	190
# of Parking Tickets Issued	370	2044	1236	672	280
Annual Billings – Citation Revenues	\$32,235	\$91,486	\$70,572	\$40,662	\$9,800
Total # of Responses to Facility Alarms	N/A	N/A	N/A	N/A	35
# of Graffiti or Vandalism Incidents	15	17	17	17	8

LEGEND

	AGGRAVATED ASSAULT	68
	GRAND THEFT VEHICLE...	56
	THEFT FROM MOTOR...	41
	OTHER THEFT	32
	BURGLARY - ALL OTHER	27
	ROBBERY	27
	BURGLARY - RESIDENTIAL	11
	GRAND THEFT PERSON	5
	ARSON	3
	HOMICIDE	2
	RAPE	2

Los Angeles City College & Surrounding Area 1000 ft radius 2020 Part I Crimes



Source: Omega Dashboard as of 2/28/21; LASD & LAPD data are included on this map
 This report does not use UCR or Clery counting rules and should not be used for statistical purposes. Counts may differ from other reports.

Van De Kamp Innovation Campus

Additional classes and curricula are offered at a satellite campus, known as the Van De Kamp Innovation Campus, located in the Atwater Village area of Los Angeles. This campus consists of approximately five acres and offers 21 night classes to LACCD students (classes currently provided online due to Covid-19 pandemic closures). Additionally, approximately 525 students are enrolled to attend the Environmental Science and Technology (ESAT) High School located on the premises.

ESAT High School operates under grants, primarily focusing on lower income students, who otherwise could potentially be involved in gang activities. Two local gangs are active in the area, both supported by the Mexican Mafia. "The Avenues" is a Hispanic gang, active one block north of the campus on Andrita Street. "Cypress Park" gang is the other primary Hispanic gang that rivals "The Avenues." Their turf is a quarter of a mile east of that campus.

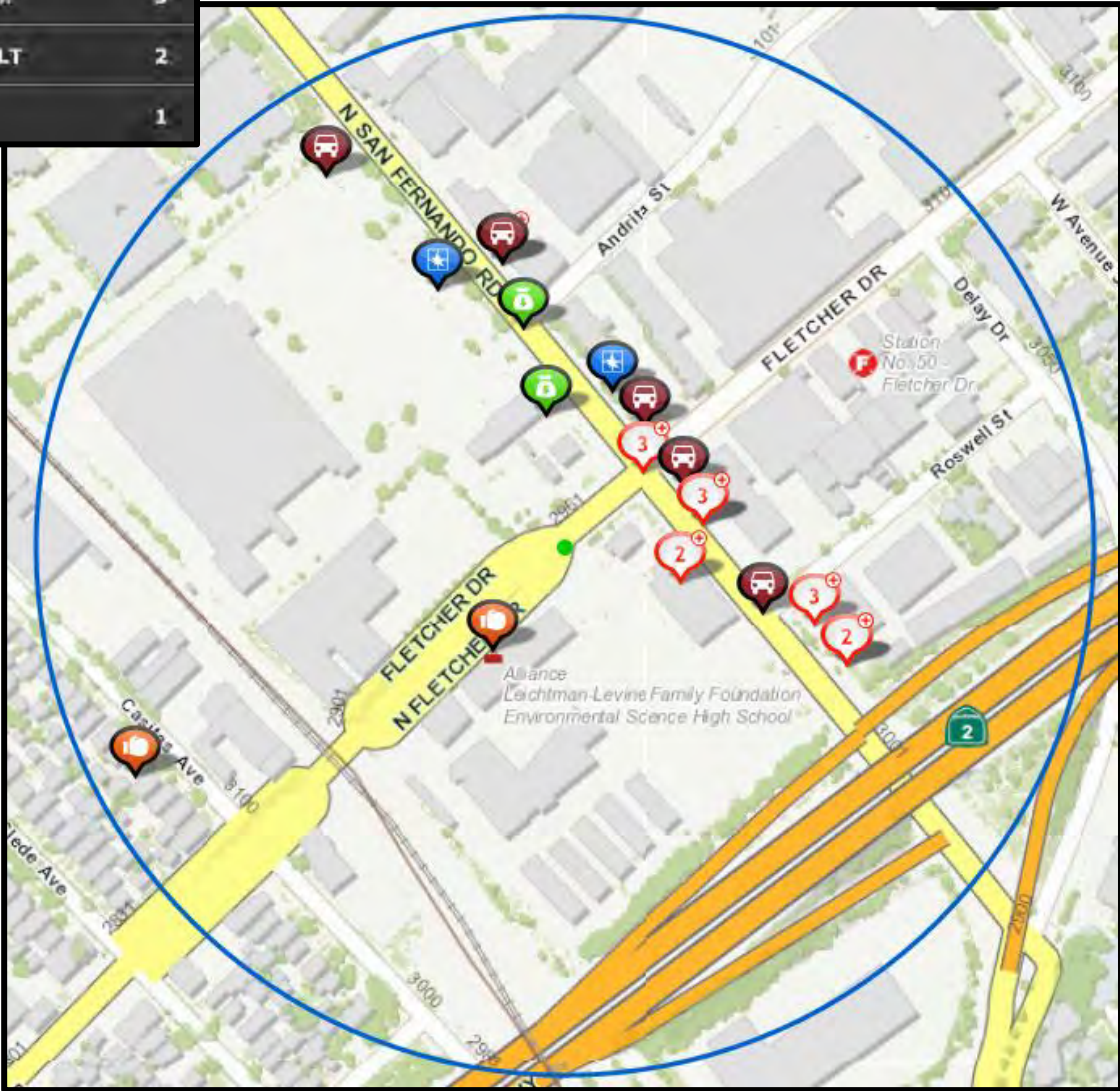
In addition to ESAT, Denny's Restaurant and El Pollo Loco Restaurant lease retail space from the District at this location. This location was staffed by two security officers, Monday thru Friday, during the campus closure period.



LEGEND

	BURGLARY - ALL OTHER	8
	GRAND THEFT VEHICLE...	7
	OTHER THEFT	6
	ROBBERY	3
	THEFT FROM MOTOR...	3
	AGGRAVATED ASSAULT	2
	RAPE	1

Van de Kamp Campus & Surrounding Area 1000 ft radius 2020 Part I Crimes



Source: Omega Dashboard as of 2/28/21; LASD & LAPD data are included on this map
 This report does not use UCR or Clery counting rules and should not be used for statistical purposes. Counts may differ from other reports.



East Los Angeles College

CAMPUS SAFETY AND CRIME PREVENTION

East Los Angeles College is the most populated college in the District and the fourth largest, geographically. For the academic years, 2019-2020, the College provided instruction for approximately 61,730 students. Between 2018 and 2020, the campus experienced a steady reduction in crime.

East Los Angeles College also operates the South Gate Educational Center, which has proved to be a major success since its humble beginnings. Located in South Gate, this facility is located just off Firestone Boulevard and Alameda Street. The facility has 25 rooms and a few amenities for its approximately 7,140 students. This facility is staffed by two security officers on AM shift, one security officer on PM shift, and one deputy sheriff generalist on PM shift.

BUILDING ADDITIONS

There are currently 29 buildings, 42 bungalows, and two multi-level parking structures on the ELAC campus which occupies approximately 88 acres in the City of Monterey Park. This does not include the Corporate Center Drive facility located at 1055 Corporate Center Drive Monterey Park and the South Gate campus at 2340 Firestone Boulevard.

Student Population: 61,730 (2019-2020)

Campus Acreage: 88.4

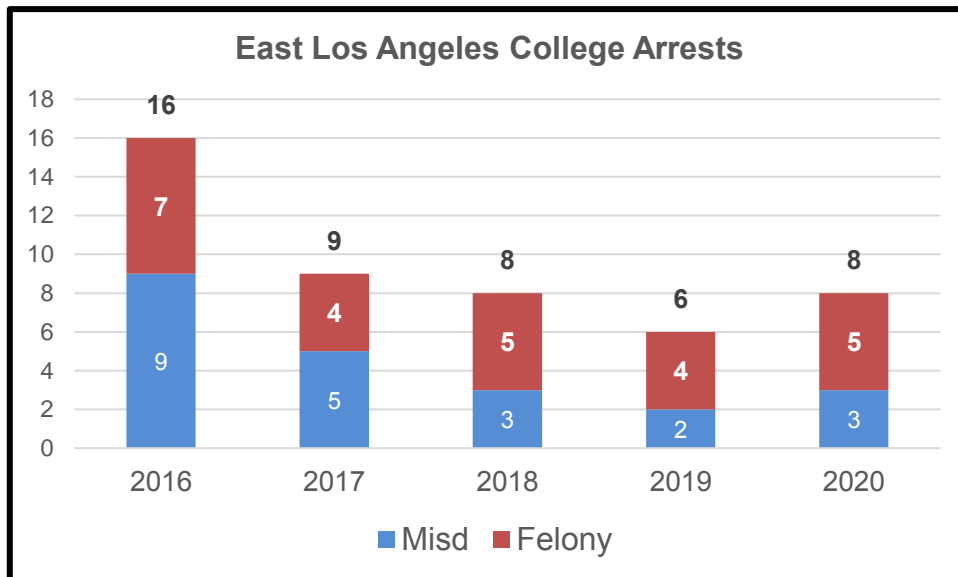
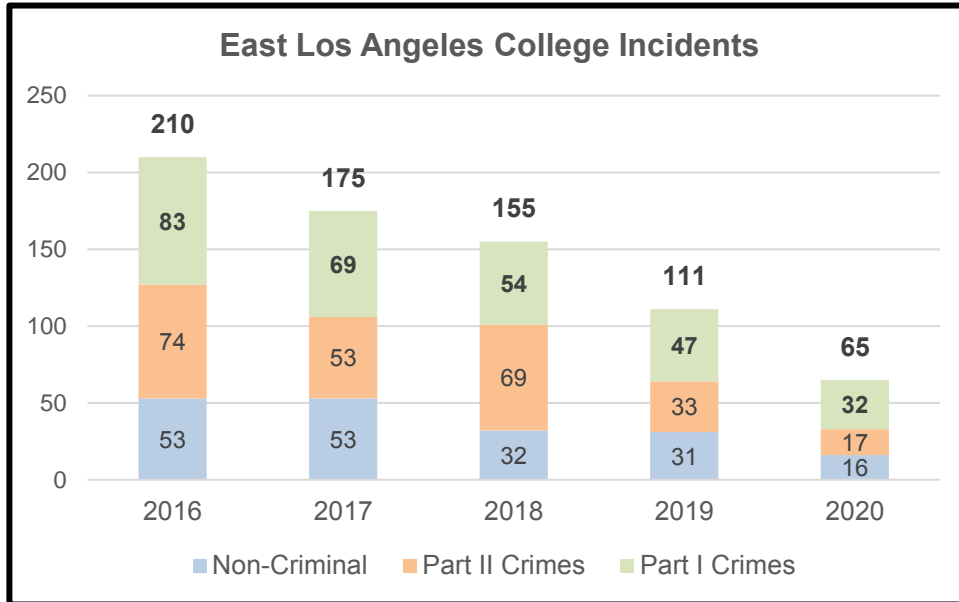
Buildings Sq. Ft: 1.1 million

HIGHLIGHTS

In response to the COVID-19 pandemic, ELAC shifted to on-line instruction abruptly in Spring 2020. During this initial rapid transition, a few courses that required specific work, lab environments, technical machinery, or hands-on, applied instruction had several hard to convert classes on campus. The Los Angeles County Sheriff's Department assisted with the check in of staff and students to ensure all CDC guidelines were being followed in order to sustain the needs for in-person courses in the COVID-19 environment.

STAFFING LEVELS (below staffing is not inclusive of South Gate staffing mentioned above)

- 1 Team Leader
- 3 Deputies
- 11 Security Officers
- 10 Cadets



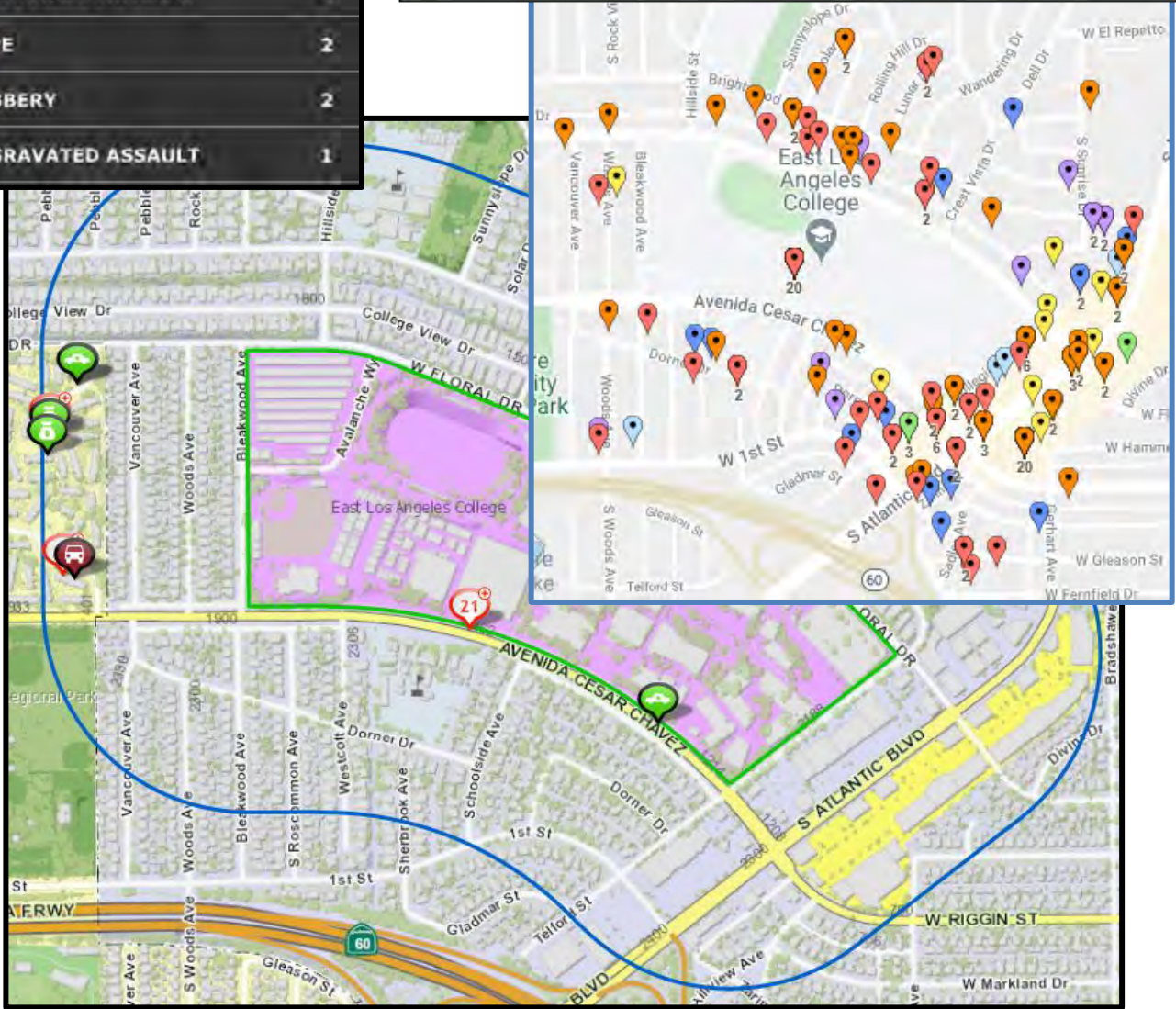


YEAR:	2016	2017	2018	2019	2020
Non-criminal Incidents on College campus	53	53	32	31	16
Incidents referred to Dean of Discipline	26	25	39	29	11
Disciplinary Hearings assisted by the Bureau	0	0	0	0	0
Watch Commander Service Comment Reports	0	0	0	4	5
Special Events staffed by the Bureau	65	53	38	55	5
Student Injury Reports	11	17	13	10	3
Students / Staff escorted throughout the campus	925	605	597	558	5
# of Parking Tickets Issued	1931	2472	4920	4074	494
Annual Billings – Citation Revenues	\$76,580	\$76,077	\$136,085	\$139,171	\$43,966
Total # of Responses to Facility Alarms	36	40	38	48	10
# of Graffiti or Vandalism Incidents	20	12	8	6	6

LEGEND for LASD Crimes

	GRAND THEFT VEHICLE...	9
	BURGLARY - ALL OTHER	6
	OTHER THEFT	6
	THEFT FROM MOTOR...	5
	RAPE	2
	ROBBERY	2
	AGGRAVATED ASSAULT	1

East Los Angeles College & Surrounding Area
 1000 ft radius for LASD Crimes
 ½ mile radius for Monterey Park Crimes
2020 Part I Crimes

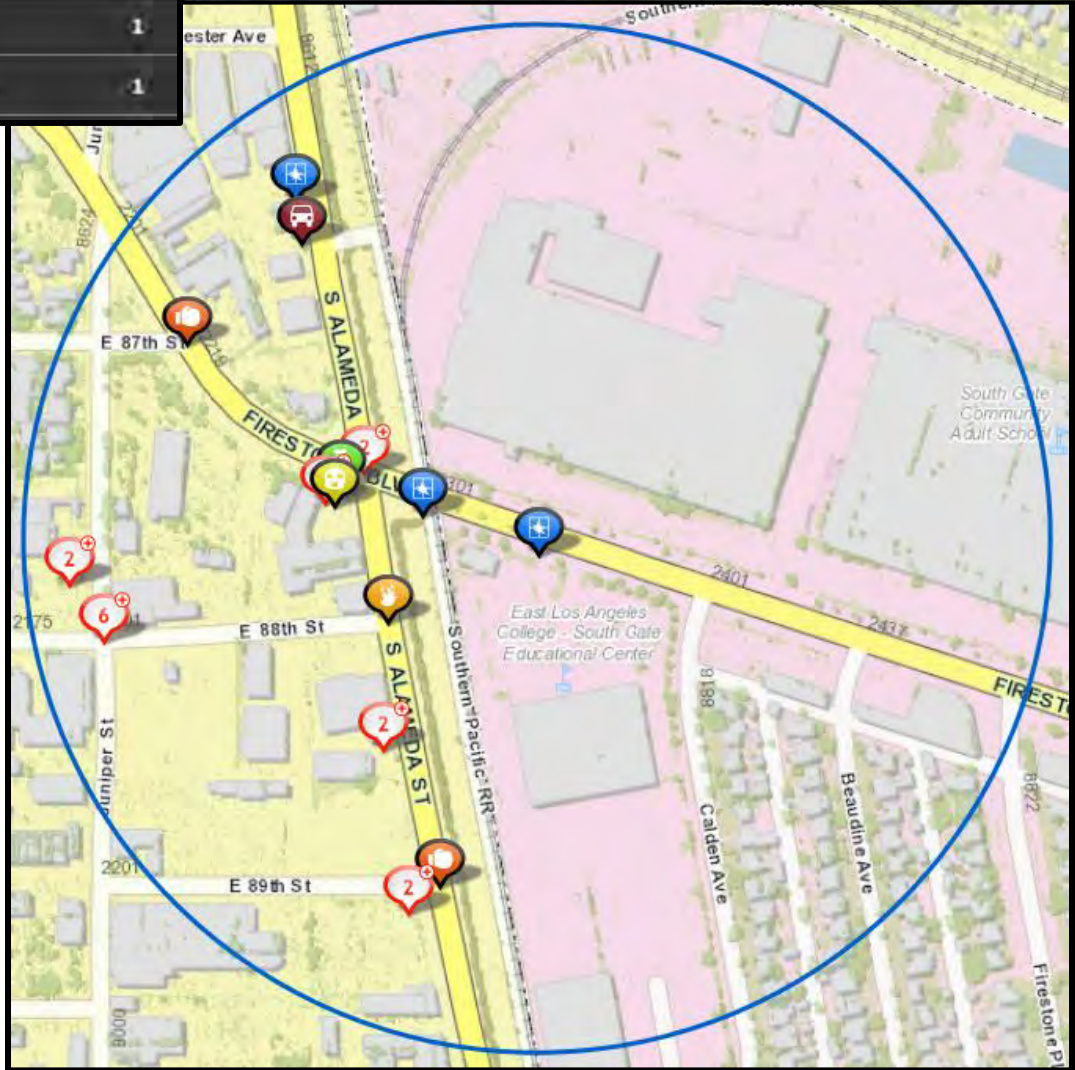


Source: Omega Dashboard as of 2/28/21 & Monterey Park PD as of 3/11/21; LASD crimes are on the large map. Monterey Park data are not available in the LASD mapping application & are mapped in a different application that does not provide a count of crimes or a complete legend.

LEGEND

	AGGRAVATED ASSAULT	7
	BURGLARY - ALL OTHER	6
	GRAND THEFT VEHICLE...	6
	ROBBERY	4
	OTHER THEFT	2
	ARSON	1
	THEFT FROM MOTOR...	1

ELAC South Gate Campus & Surrounding Area 1000 ft radius 2020 Part I Crimes



Source: Omega Dashboard as of 2/28/21; LASD data is included, but South Gate PD data is not available in this map. This report does not use UCR or Clery counting rules and should not be used for statistical purposes. Counts may differ from other reports.



Los Angeles Harbor College

Los Angeles Harbor College is the third largest campus in the District, having an enrollment of more than 12,647 students. Harbor College experienced a 39% decrease in overall crime.

BUILDING ADDITIONS

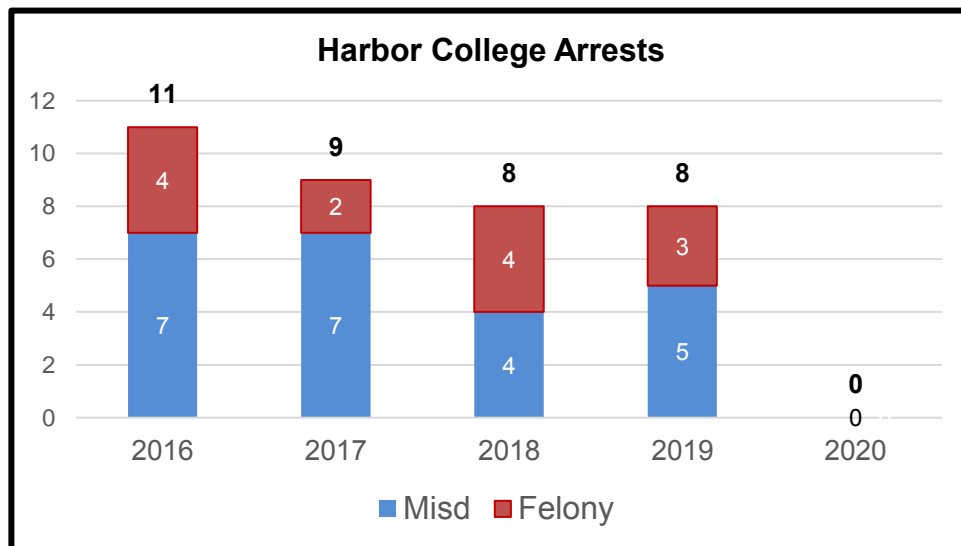
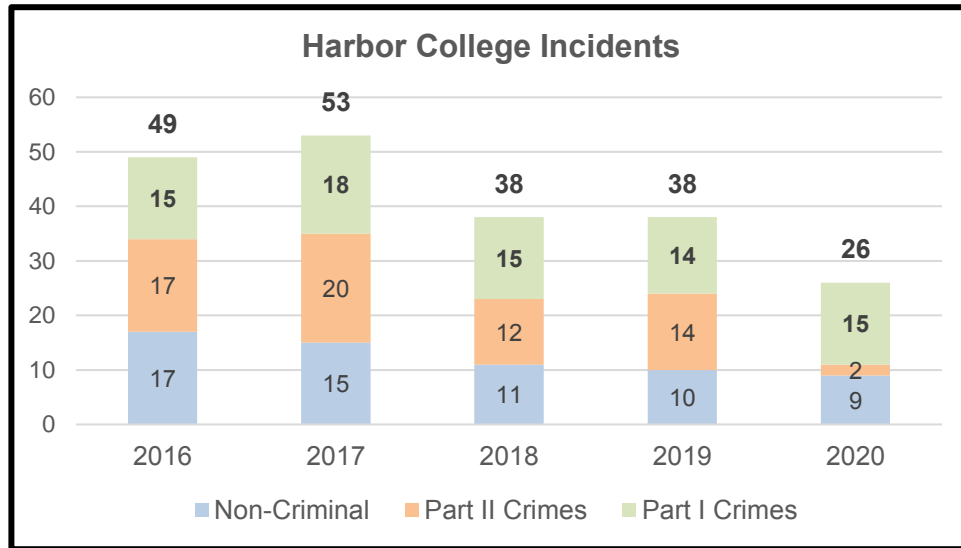
There are currently 40 buildings, 6 storage containers, and 1 parking structure on campus with a combined total of 843,086 square feet. The brand new Student Union Building was completed in February of 2019. This state-of-the-art facility added 60,000 square feet to the campus and is the new location for the bookstore, business office, and Culinary Arts instruction area.

HIGHLIGHTS

The Los Angeles Sheriff's Department stationed at Harbor College has provided security for many community outreach programs aimed at assisting students and community members affected by the Coronavirus pandemic. These outreach events have included laptop distributions, grocery giveaways and other events aimed at assisting our community in their time of need.

STAFFING LEVEL

1 Team Leader
1 Deputy
9 Security Officers
8 Cadets





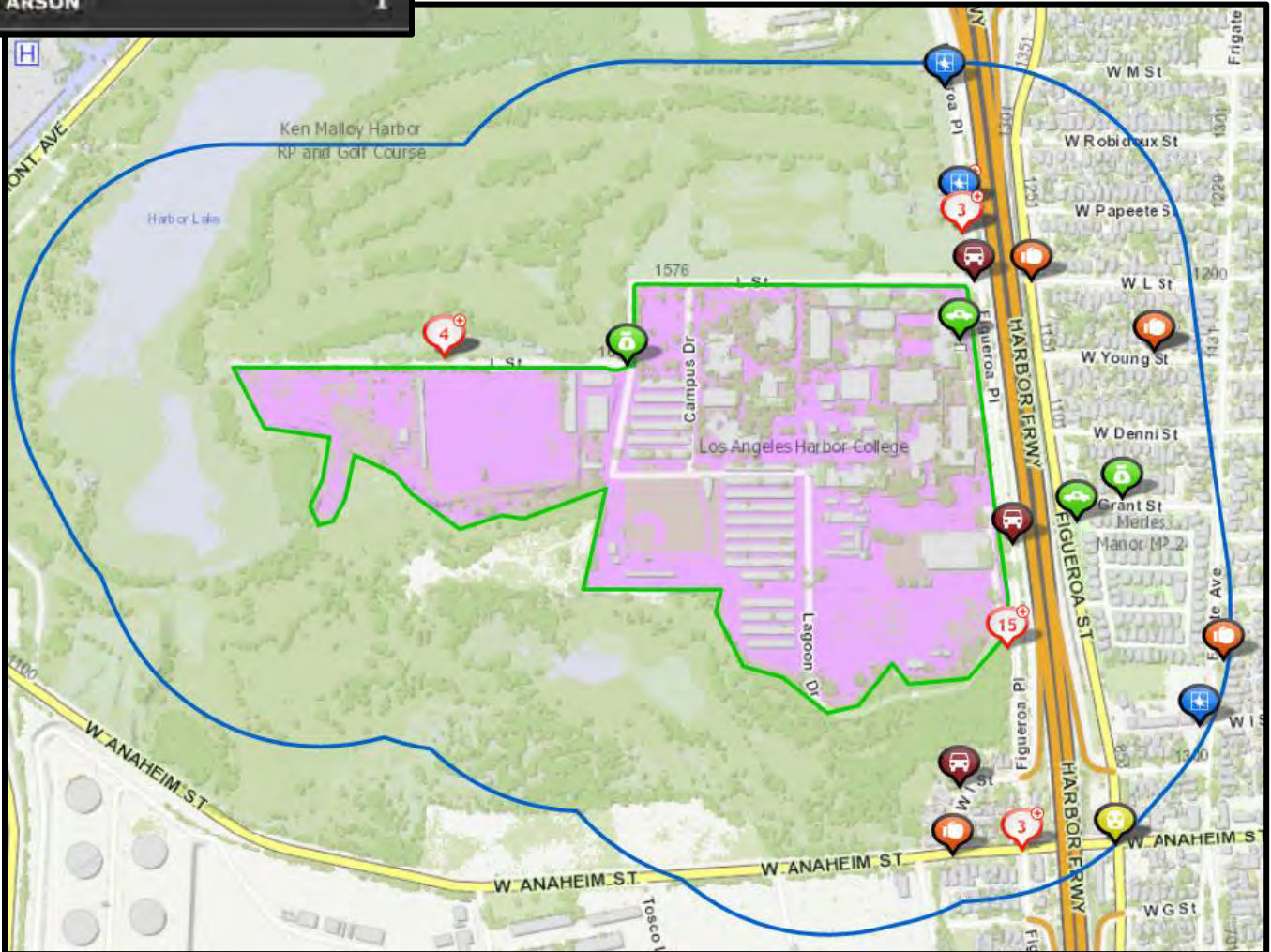
YEAR:	2016	2017	2018	2019	2020
Non-criminal Incidents on College campus	17	15	11	10	9
Incidents referred to Dean of Discipline	24	31	22	1	0
Disciplinary Hearings assisted by the Bureau	4	2	4	3	0
Watch Commander Service Comment Reports	0	0	0	2	2
Special Events staffed by the Bureau	25	31	36	54	0
Student Injury Reports	22	51	46	0	0
Students / staff escorted throughout the campus	121	144	156	99	0
# of Parking Tickets Issued	1624	1823	1719	1428	460
Annual Billings – Citation Revenues	\$61,240	\$71,553	\$166,490	\$53,642	\$27,713
Total # of Responses to Facility Alarms	26	42	34	50	35
# of Graffiti or Vandalism Incidents	1	8	1	2	1

Swap meet every Sunday; movie filming; graduations - Complaints/Commendations

LEGEND

	BURGLARY - ALL OTHER	13
	THEFT FROM MOTOR...	12
	AGGRAVATED ASSAULT	7
	OTHER THEFT	7
	GRAND THEFT VEHICLE...	4
	ROBBERY	2
	ARSON	1

Harbor College & Surrounding Area
1000 ft radius
2020 Part I Crimes



Source: Omega Dashboard as of 2/28/21; LASD data is included, but South Gate data is not available in this map. This report does not use UCR or Clery counting rules and should not be used for statistical purposes. Counts may differ from other reports.



Los Angeles Mission College

Los Angeles Mission College is the smallest college in the District, with an increase in enrollment that brings the total to over 10,098 students enrolled. Mission College has experienced an overall increase in crime of 18% from 2019 to 2020.

Campus infrastructure has grown significantly since 2008. A few noteworthy additions are the East Campus, a Health, Fitness & Athletic Center (HFAC); Computer, Math and Science (CMS) Center; and a Culinary Arts Building, centrally located on the main campus and a Child Development Center on the northeast side of campus.

BUILDING ADDITIONS

There are currently 16 buildings, 20 bungalows, 9 storage containers and 1 parking structure on campus with a combined total of 953,938 square feet.

Student Population: 10,098

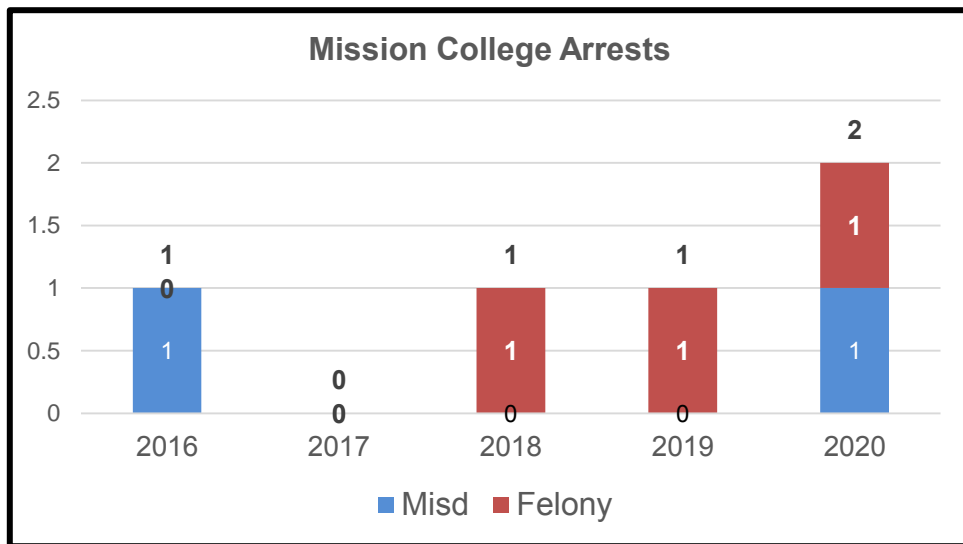
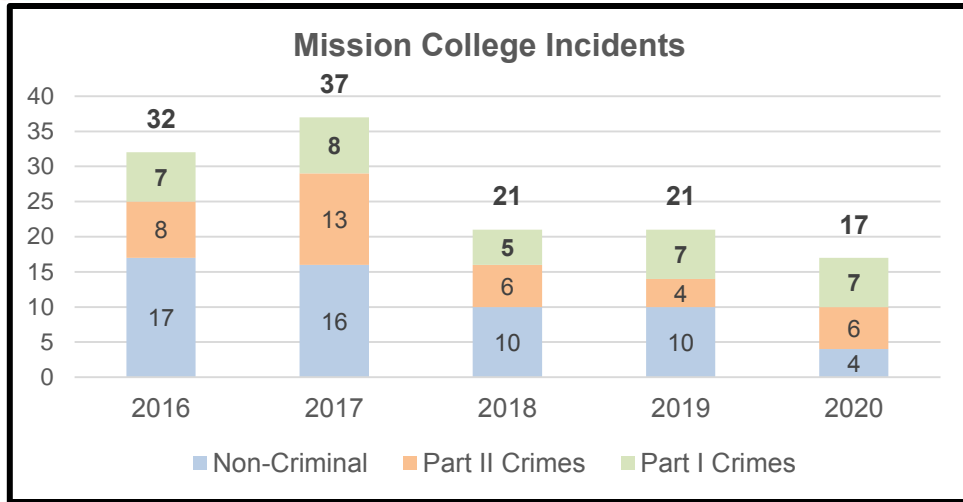
Campus Acreage: 36

HIGHLIGHTS

The Los Angeles County Sheriff's Department provided extra security during the November election and increased patrol presence due to the Coronavirus pandemic.

STAFFING LEVELS

- 1 Team leader
- 1 Deputy
- 8 Security Officers
- 2 Cadets



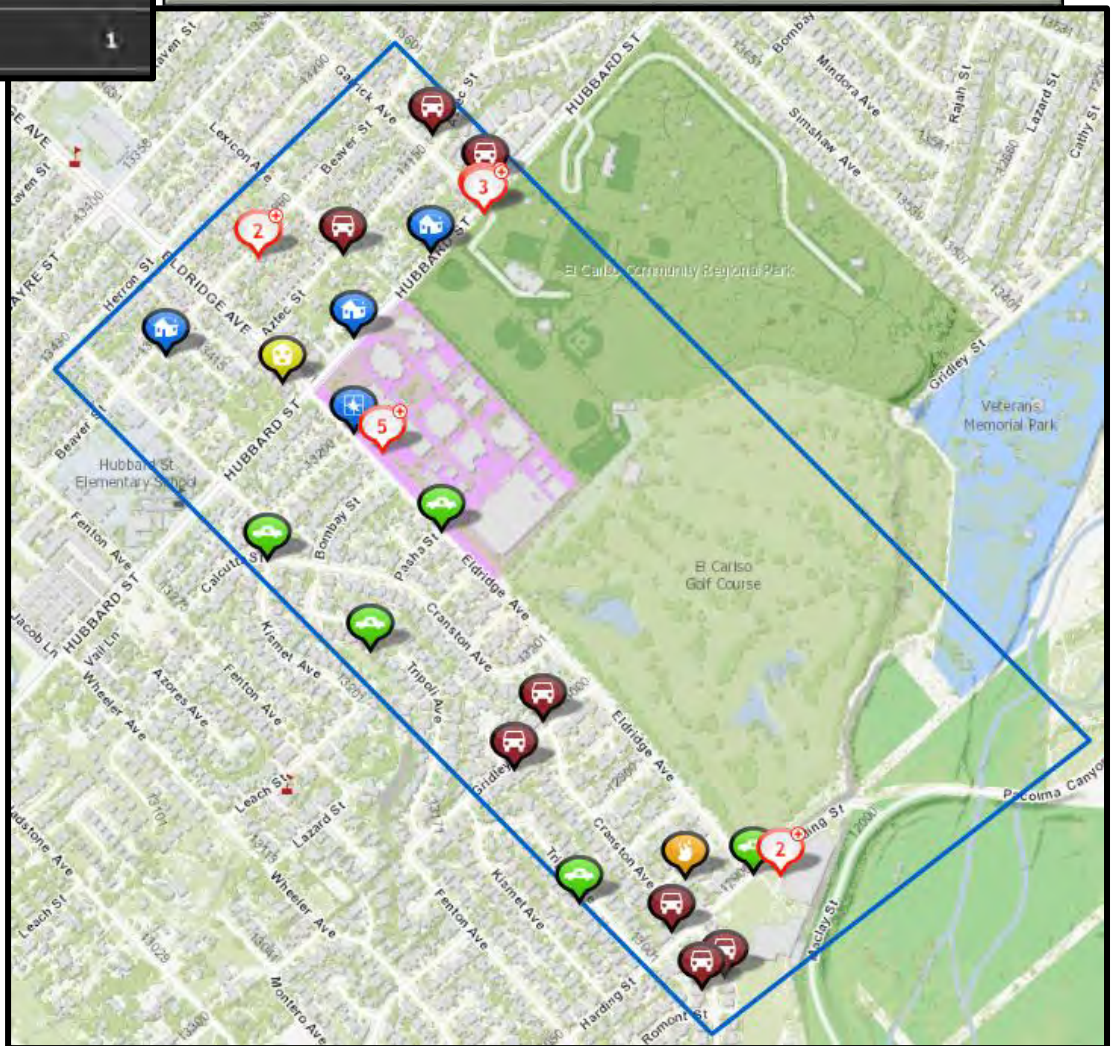


YEAR:	2016	2017	2018	2019	2020
Non-criminal Incidents on College campus	17	16	10	10	4
Incidents referred to Dean of Discipline	2	2	1	19	0
Disciplinary Hearings assisted by the Bureau	2	1	0	1	0
Watch Commander Service Comment Reports	0	0	0	5	0
Special Events staffed by the Bureau	25	32	33	33	4
Student Injury Reports	9	29	22	18	2
Students / Staff escorted throughout the campus	1052	1051	1052	810	0
# of Parking Tickets Issued	N/A	1043	1090	848	188
Annual Billings – Citation Revenues	\$9,544	\$10,786	\$19,558	\$18,364	\$12,328
Total # of Responses to Facility Alarms	4	6	9	43	2
# of Graffiti or Vandalism Incidents	1	7	4	2	3

LEGEND

	THEFT FROM MOTOR...	11
	GRAND THEFT VEHICLE...	9
	OTHER THEFT	5
	BURGLARY - ALL OTHER	3
	BURGLARY - RESIDENTIAL	3
	ARSON	1
	ROBBERY	1

Mission College & Surrounding Area 1000+ ft radius* 2020 Part I Crimes



Source: Omega Dashboard as of 2/28/21; LASD & LAPD data are included on this map. *The scope of the map was enlarged slightly to display the area surrounding the East Campus at Eldridge Ave & Harding St. This report does not use UCR or Clery counting rules and should not be used for statistical purposes. Counts may differ from other reports.



Los Angeles Pierce College

Los Angeles Pierce College is the largest college in the District in terms of acreage. With an enrollment of approximately 12,000 students, Pierce College continues to be a safe learning environment as they have experienced a 44% decrease in overall crime. Pierce College has the second highest enrollment just behind East Los Angeles College. Having more than 400 acres of property, Pierce College ranks the highest for hosting special events within the District.

This campus is unique because it has a farm agricultural area, which provides homes for approximately 200 farm animals. This campus is also an emergency animal shelter during natural disasters. Due to the affluence of the surrounding area of this campus, we have a number of celebrities and social media influencers who attend many of our special events on a regular basis.

BUILDING ADDITIONS

There are currently 58 buildings with a combined total of approximately 982,590 square feet.

Student population: 12,000

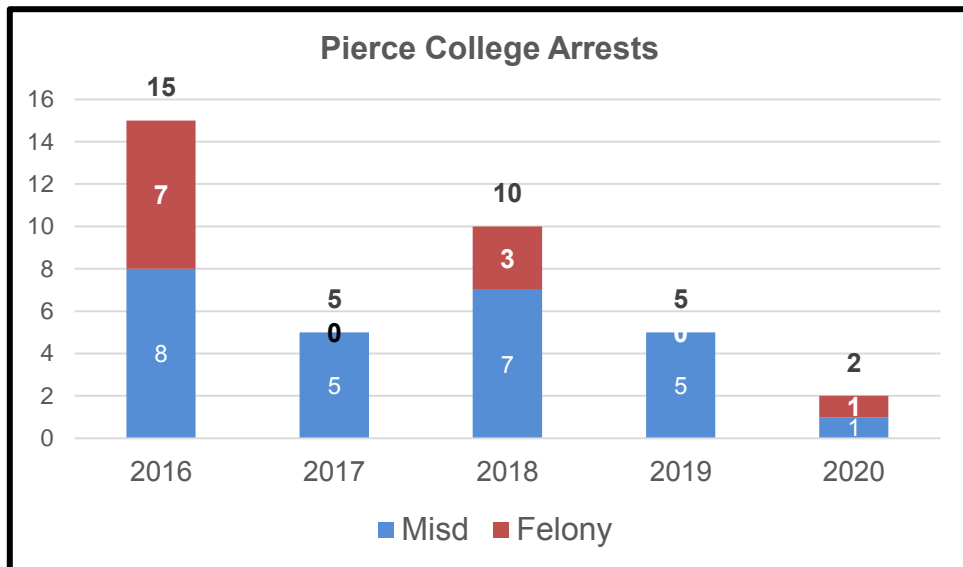
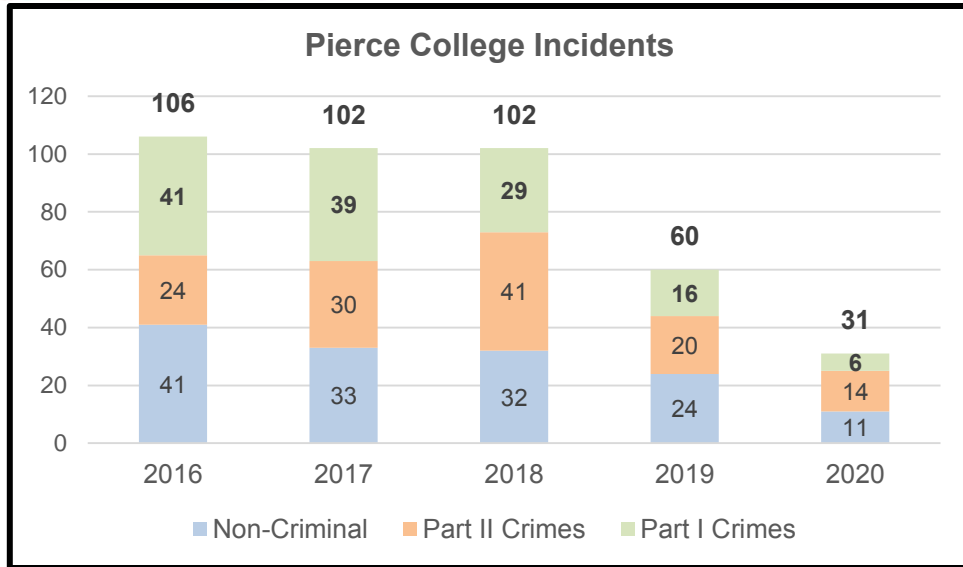
Campus Acreage: 426

HIGHLIGHTS

The Los Angeles Sheriff's Department stationed at Pierce College has provided security for many community outreach programs aimed at assisting students and community members affected by the Coronavirus pandemic. These outreach events have included laptop distributions, grocery giveaways and other events aimed at assisting our community in their time of need.

STAFFING LEVELS

- 1 Team Leader
- 2 Deputies
- 9 Security Officers
- 5 Cadets





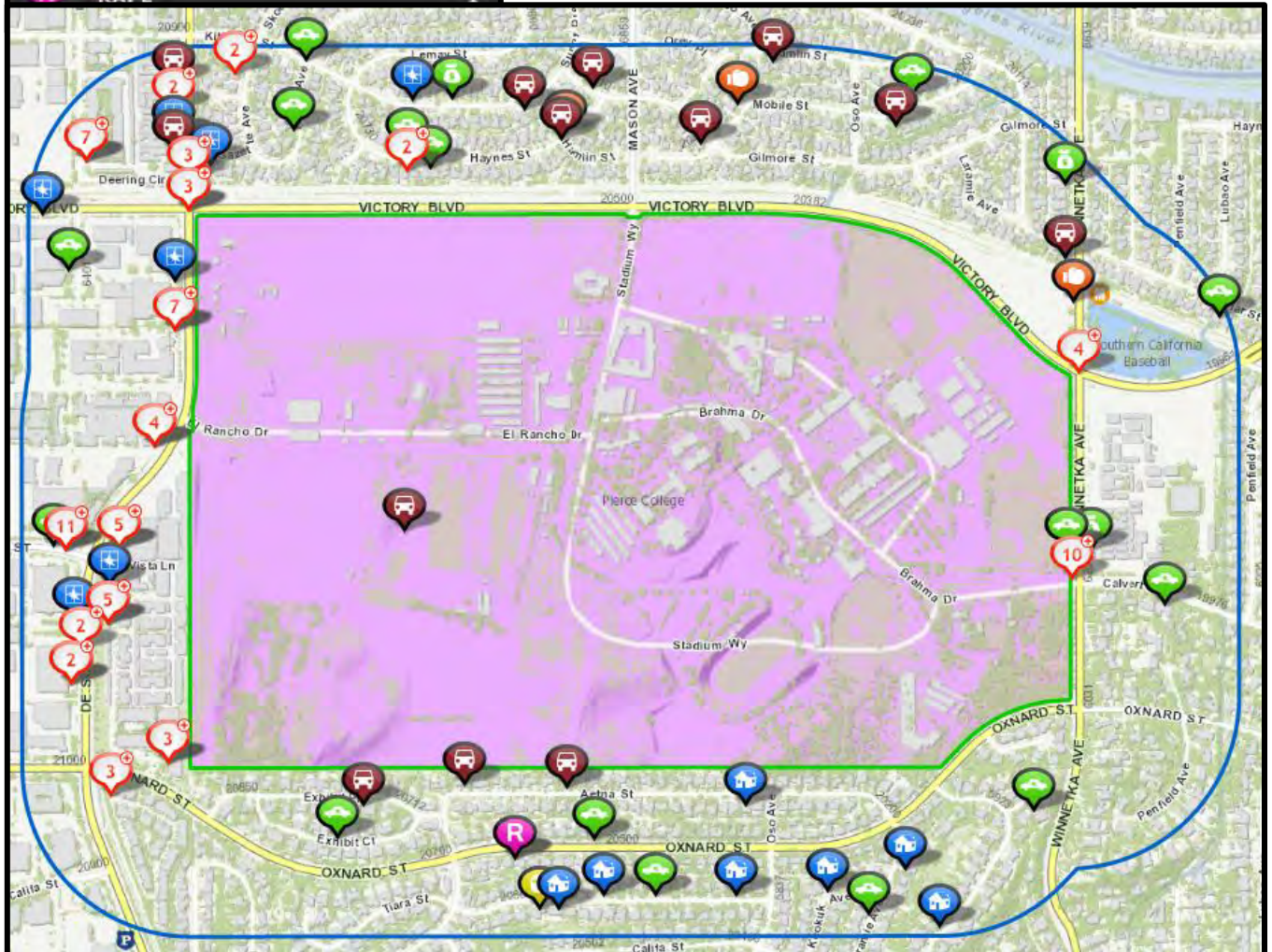
YEAR:	2016	2017	2018	2019	2020
Non-criminal Incidents on College campus	41	33	32	24	11
Incidents referred to Dean of Discipline	81	91	87	0	0
Disciplinary Hearings assisted by the Bureau	81	91	9	0	0
Watch Commander Service Comment Reports	2	0	2	2	1
Special Events staffed by the Bureau	29	29	39	29	2
Student Injury Reports	75	80	57	15	0
Students / Staff escorted throughout the campus	59	42	27	15	0
# of Parking Tickets Issued	607	2248	3409	N/A	N/A
Annual Billings – Citation Revenues	\$41,731	\$103,614	\$124,345	\$115,758	0
Total # of Responses to Facility Alarms	15	26	34	78	80
# of Graffiti or Vandalism Incidents	2	10	13	6	10

performance



LEGEND

	THEFT FROM MOTOR...	53
	GRAND THEFT VEHICLE...	30
	OTHER THEFT	26
	BURGLARY - RESIDENTIAL	21
	BURGLARY - ALL OTHER	20
	AGGRAVATED ASSAULT	10
	ROBBERY	4
	RAPE	1



Source: Omega Dashboard as of 2/28/21; LASD & LAPD data are included on this map.
 This report does not use UCR or Clery counting rules and should not be used for statistical purposes. Counts may differ from other reports.



Los Angeles Southwest College

Los Angeles Southwest College is the sixth largest college within the District with the fewest number of students enrolled. Los Angeles Southwest College experienced an 85% reduction in crime on campus in comparison to the previous year.

BUILDING ADDITIONS

There are currently 14 buildings, 15 storage containers, 8 parking structures and 2 bungalows on campus with a combined total of 989,439 square feet.

Student Population 8,000

Campus Acreage 78

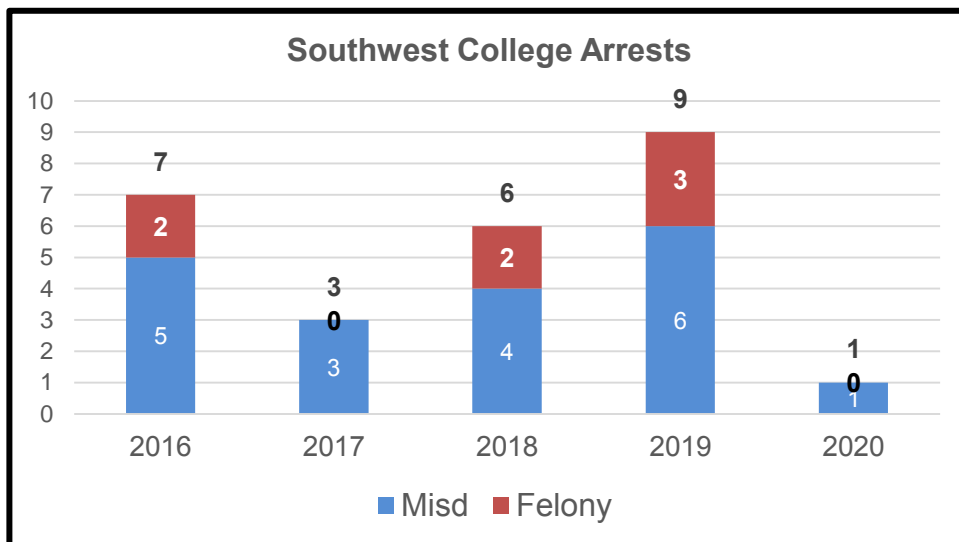
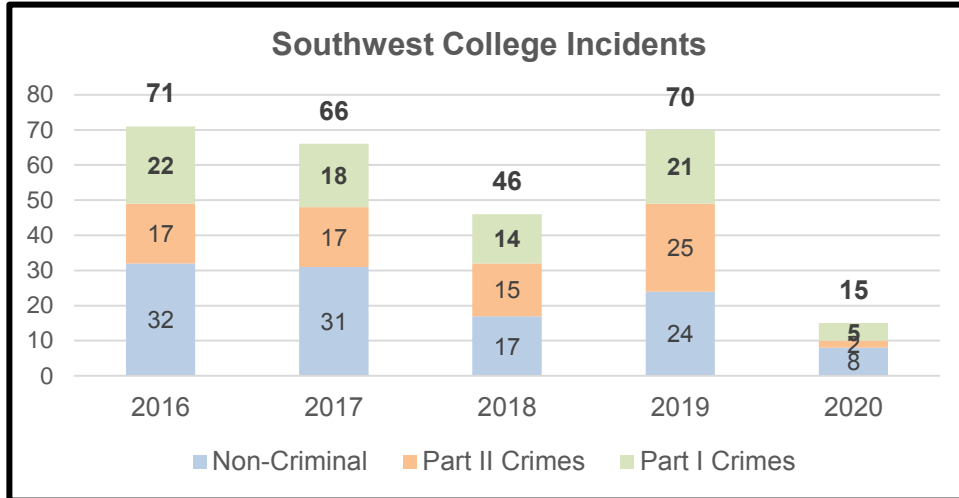
LASC has 2 high schools on campus: Middle College High School and Bright Star High School.

HIGHLIGHTS

Los Angeles Southwest College had a plethora of filming events on campus in 2020. There have been commercials, movies, sporting highlights and documentaries filmed on-site. The campus hosted the 2020 CIF high school tournament and finals. LASC also hosted commercial shoots for NBA superstar James Harden and former NFL star Colin Kaepernick. The campus also conducted numerous food giveaways; one in particular was sponsored by Congresswoman Maxine Waters. The campus was a site for numerous COVID-19 tests as well as a recurring vaccination site. The collaboration between the Sheriff's Department and the team at Southwest College were key factors in the success of all of these events.

STAFFING LEVEL

1 Team Leader
2 Deputies
10 Security Officers
9 Cadets





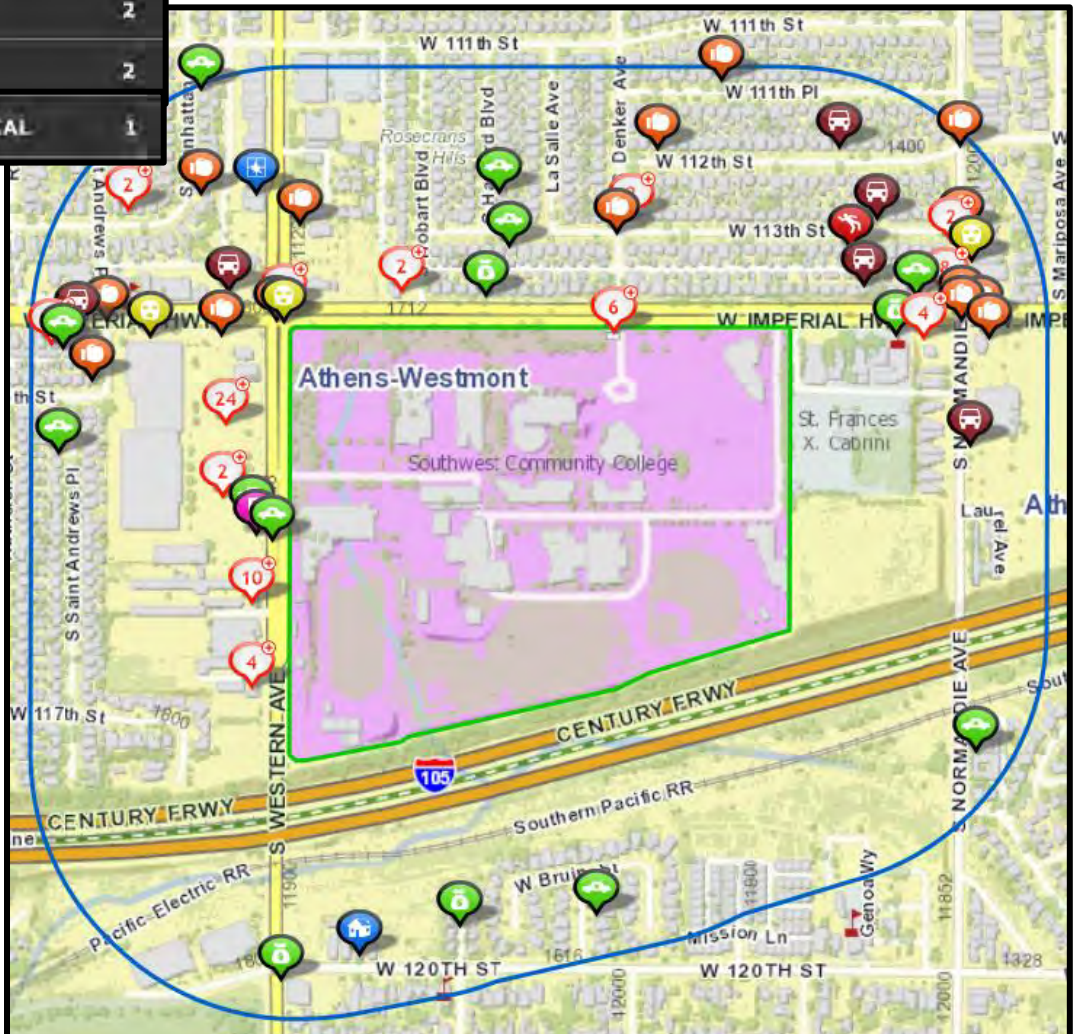
YEAR:	2016	2017	2018	2019	2020
Non-criminal Incidents on College campus	32	31	17	24	8
Incidents referred to Dean of Discipline	25	28	37	UNK	0
Disciplinary Hearings assisted by the Bureau	8	13	11	UNK	0
Watch Commander Service Comment Reports	N/A	N/A	1	0	1
Special Events staffed by the Bureau	33	41	55	85	13
Student Injury Reports	36	25	31	23	0
Students / Staff escorted throughout the campus	N/A	N/A	N/A	N/A	N/A
# of Parking Tickets Issued	649	578	1794	562	66
Annual Billings – Citation Revenues	\$45,000	\$41,000	\$52,000	\$35,430	\$13,422
Total # of Responses to Facility Alarms	85	61	77	UNK	UNK
# of Graffiti or Vandalism Incidents	3	3	2	6	1



LEGEND

	OTHER THEFT	36
	AGGRAVATED ASSAULT	22
	GRAND THEFT VEHICLE...	17
	THEFT FROM MOTOR...	15
	ROBBERY	13
	BURGLARY - ALL OTHER	4
	HOMICIDE	2
	RAPE	2
	BURGLARY - RESIDENTIAL	1

Southwest College & Surrounding Area 1000 ft radius 2020 Part I Crimes



Source: Omega Dashboard as of 2/28/21; LASD data is included on this map.
This report does not use UCR or Clery counting rules and should not be used for statistical purposes. Counts may differ from other reports.

Los Angeles Trade Technical College

Los Angeles Trade Technical (“Tech”) College is one of the smallest campuses in the District, yet it boasts an enrollment of just under 20,000 students. Trade Tech is located in a region of Los Angeles experiencing a great deal of crime and poverty. Trade Tech is different from other Community Colleges due mainly to their affordable pathway to career focused work trades.

Community College Bureau staff take great pride in keeping this campus safe for the students and staff despite the crime challenges throughout the area. Trade Tech has seen a 76% reduction in overall crime on campus in comparison to the previous year.

BUILDING ADDITIONS

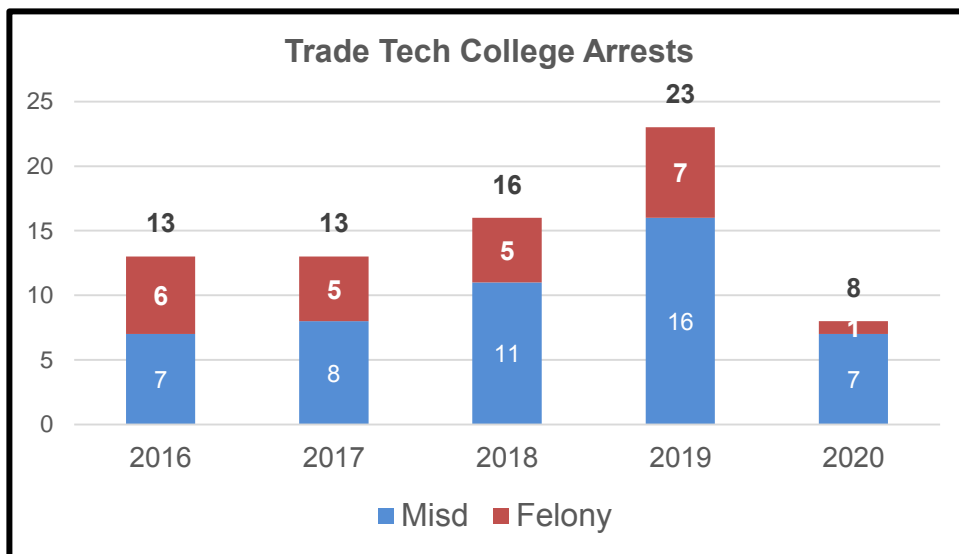
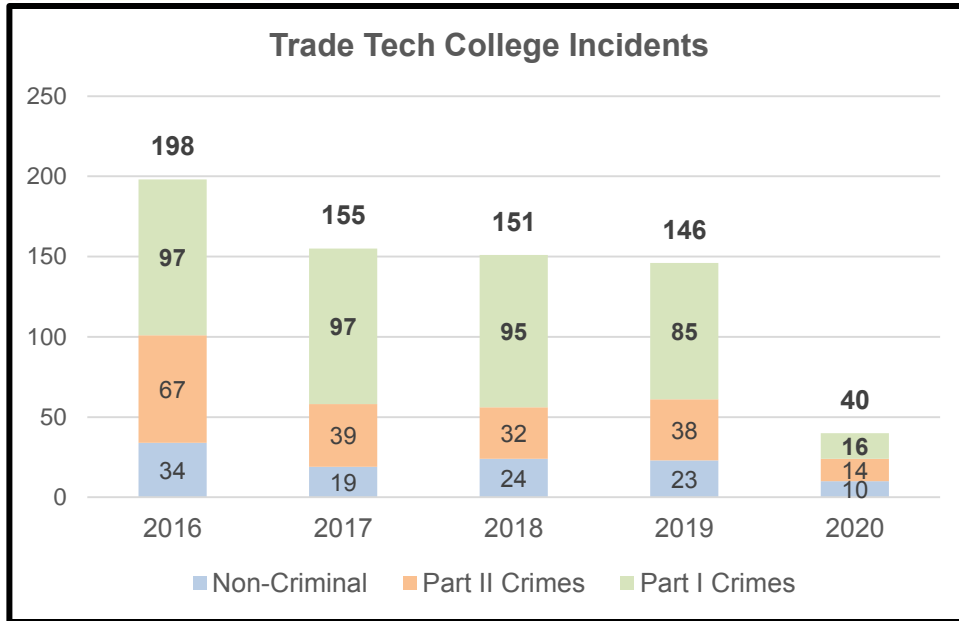
There are currently 12 buildings and 3 parking structures on campus with a combined total of 1,402,825 square feet. The 24th Street parking structure was the last addition to the campus in 2017.

HIGHLIGHTS

There are currently two ongoing construction projects at Los Angeles Trade Tech College. A new culinary building is being constructed with state of the art cooking & kitchen equipment which will be centrally located on the main campus. Additionally, a new building is being built off campus where the majority of the trades will be taught.

STAFFING LEVEL

1 Team Leader
2 Deputies
10 Security Officers
4 Cadets



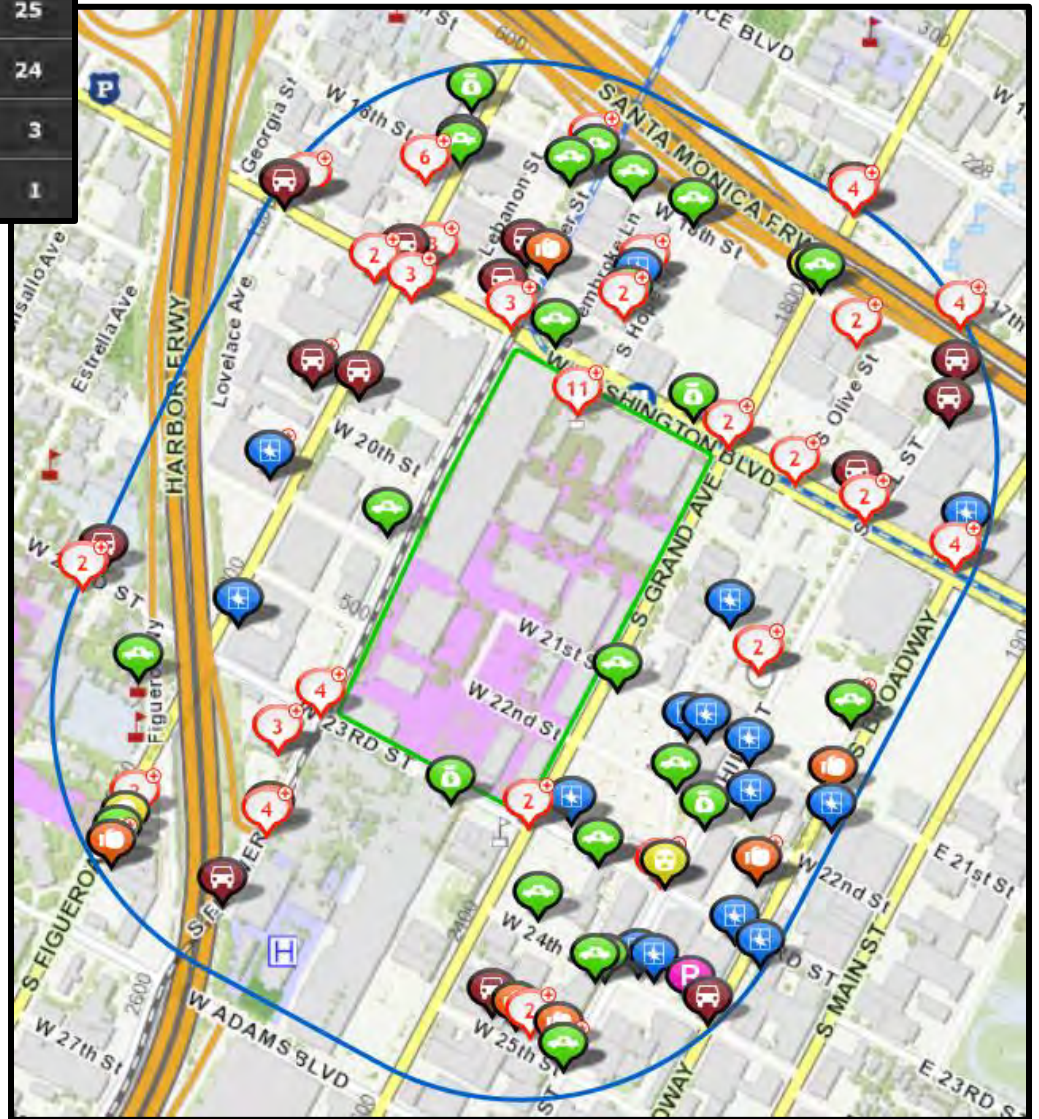


YEAR:	2016	2017	2018	2019	2020
Non-criminal Incidents on College campus	34	19	24	23	10
Incidents referred to Dean of Discipline	40	44	50	110	7
Disciplinary Hearings assisted by the Bureau	0	0	0	110	0
Watch Commander Service Comment Reports	0	0	4	5	4
Special Events staffed by the Bureau	29	86	86	125	2
Student Injury Reports	56	46	16	19	2
Students / Staff escorted throughout the campus	N/A	60	225	171	300
# of Parking Tickets Issued	1,601	1,496	1,697	2,910	461
Annual Billings – Citation Revenues	\$51,733	\$43,621	\$31,957	\$45,784	\$64,550
Total # of Responses to Facility Alarms	N/A	14	35	37	15
# of Graffiti or Vandalism Incidents	28	24	19	11	8



LEGEND

	GRAND THEFT VEHICLE...	44
	THEFT FROM MOTOR...	36
	OTHER THEFT	29
	AGGRAVATED ASSAULT	27
	BURGLARY - ALL OTHER	25
	ROBBERY	24
	RAPE	3
	GRAND THEFT PERSON	1



Source: Omega Dashboard as of 2/28/21; LASD & LAPD data are included on this map. This report does not use UCR or Ctery counting rules and should not be used for statistical purposes. Counts may differ from other reports.



Los Angeles Valley College

Valley College is the second largest campus in the District with an enrollment of 17,785 students. The major ongoing construction project at Valley College is the construction of their new Arts Building which should be completed in 2021. Valley College has experienced an overall 5% decrease in crime in comparison to the prior year.

BUILDING ADDITIONS

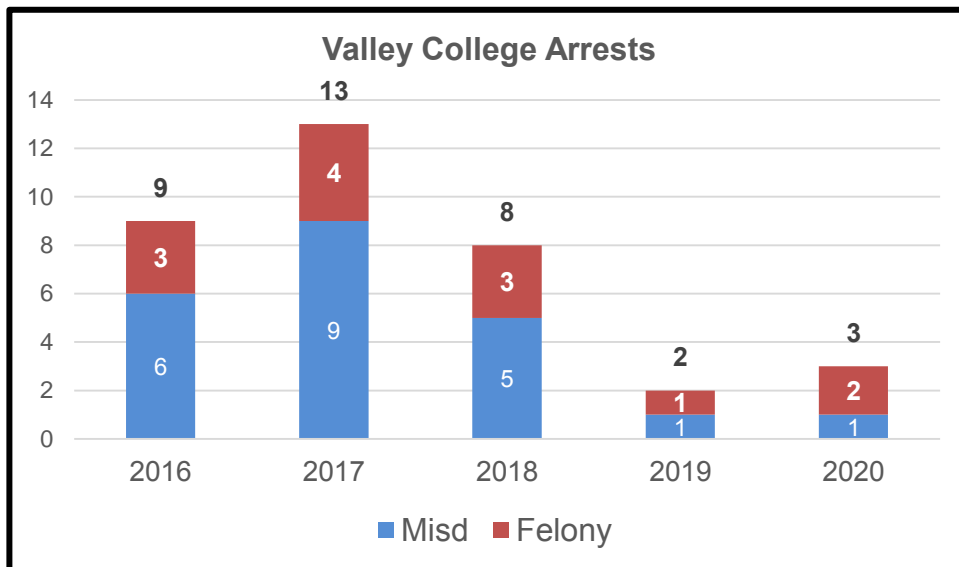
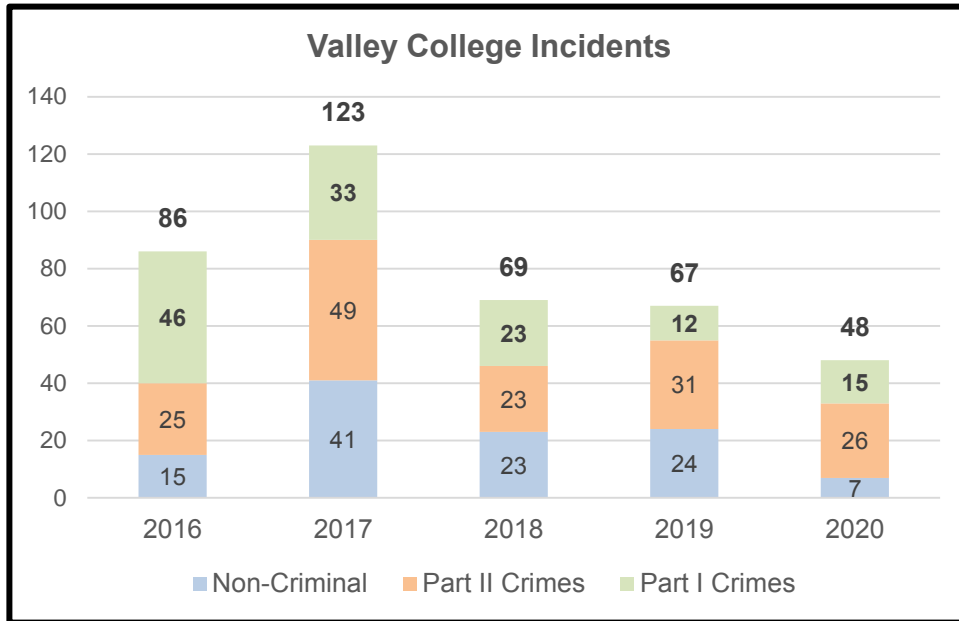
There are currently 80 buildings and a parking structure on campus.

HIGHLIGHTS

Throughout the 2020 Covid-19 pandemic, the Community Colleges Bureau staff stationed at Los Angeles Valley College (LAVC) helped facilitate numerous school sponsored distributions (i.e. food, computer, gift card, etc.) related to the pandemic. Deputies and security officers assigned at LAVC took pride in keeping the campus a safe place for students, faculty and staff members.

STAFFING LEVELS

- 1 Team leader
- 1 Deputy
- 13 Security Officers
- 1 Cadets





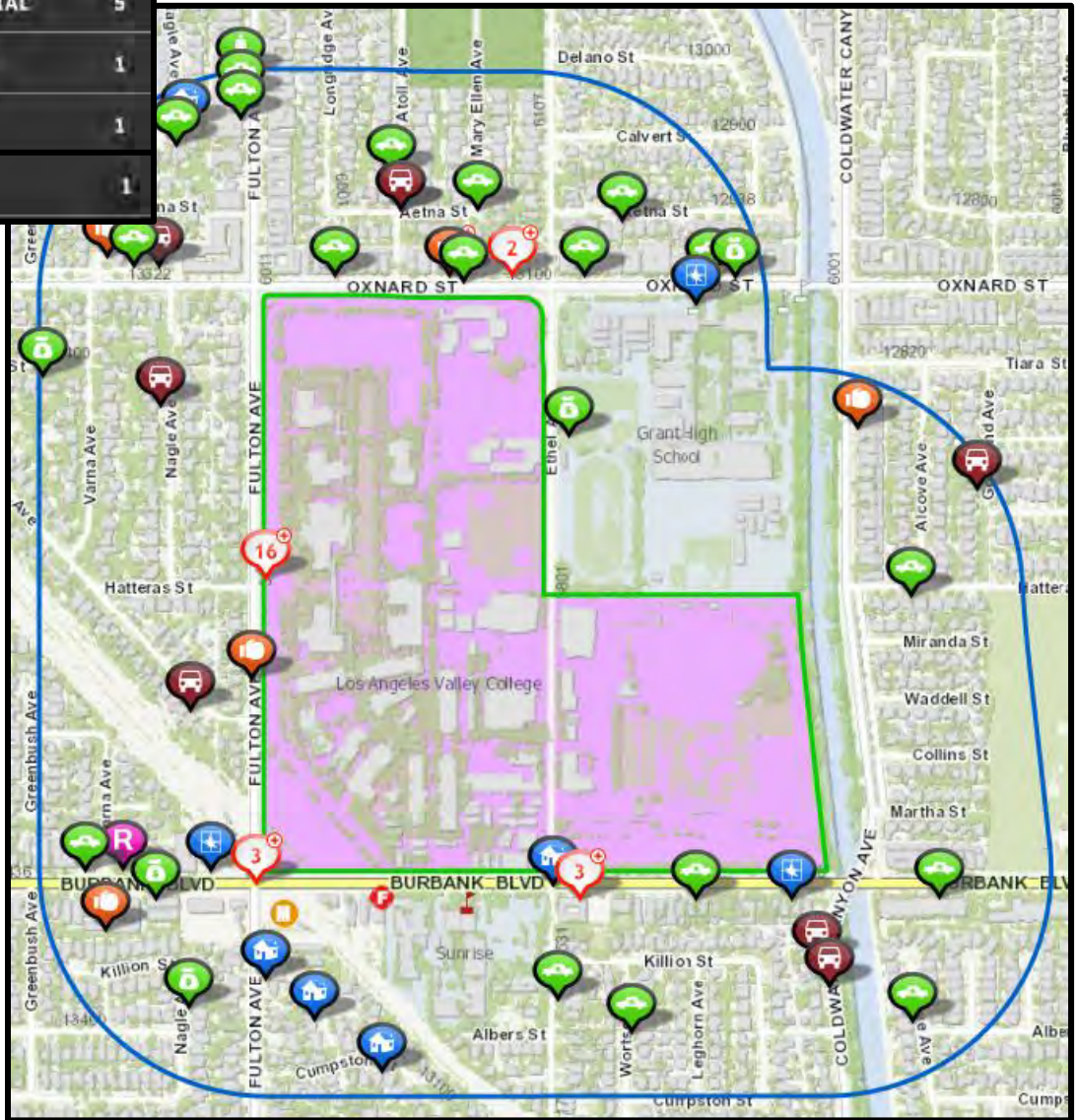
YEAR:	2016	2017	2018	2019	2020
Non-criminal Incidents on College campus	15	41	23	24	7
Incidents referred to Dean of Discipline	34	42	48	52	0
Disciplinary Hearings assisted by the Bureau	16	0	1	0	0
Watch Commander Service Comment Reports	1	0	1	1	0
Special Events staffed by the Bureau	20	22	20	20	0
Student Injury Reports	52	52	52	47	14
Students / Staff escorted throughout the campus	43	27	44	25	20
# of Parking Tickets Issued	4,018	3,010	3,028	3,973	0
Annual Billings – Citation Revenues	\$138,664	\$135,022	\$136,028	\$131,426	0
Total # of Responses to Facility Alarms	6	13	11	14	12
# of Graffiti or Vandalism Incidents	5	13	0	21	16



LEGEND

	THEFT FROM MOTOR...	24
	GRAND THEFT VEHICLE...	13
	BURGLARY - ALL OTHER	11
	AGGRAVATED ASSAULT	9
	OTHER THEFT	8
	BURGLARY - RESIDENTIAL	5
	GRAND THEFT PERSON	1
	RAPE	1
	ROBBERY	1

Valley College & Surrounding Area 1000 ft radius 2020 Part I Crimes



Source: Omega Dashboard as of 2/28/21; LASD & LAPD data are included on this map. This report does not use UCR or Clery counting rules and should not be used for statistical purposes. Counts may differ from other reports.



West Los Angeles College

West Los Angeles College ranks in the 50 percentile in enrollment and acreage within the District. The student population of West Los Angeles College is approximately 12,000. West Los Angeles College experienced an 86% reduction in overall crime on campus in comparison to the previous year.

BUILDING ADDITIONS

There are currently 75 buildings, 14 storage containers, and 1 parking structure on campus with a combined total of 921,471 square feet over 72 acres.

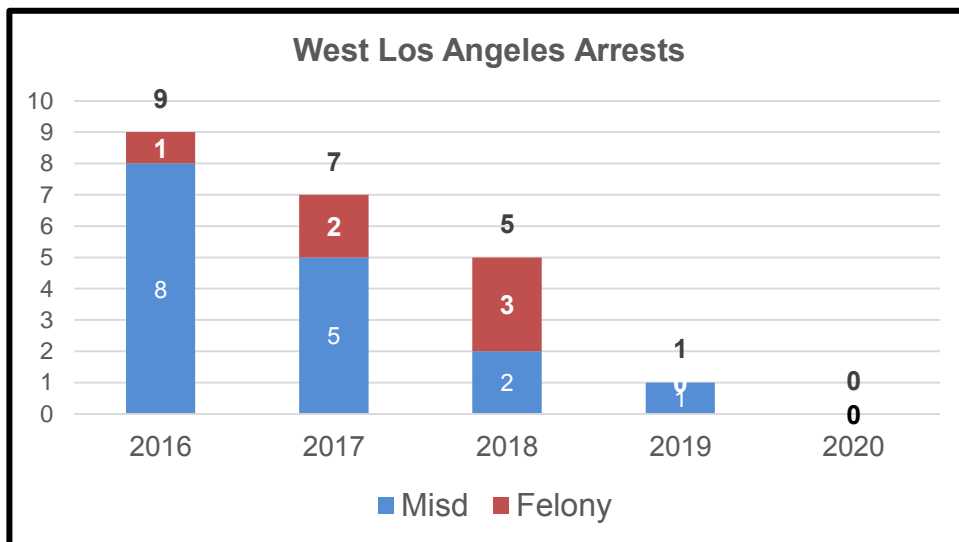
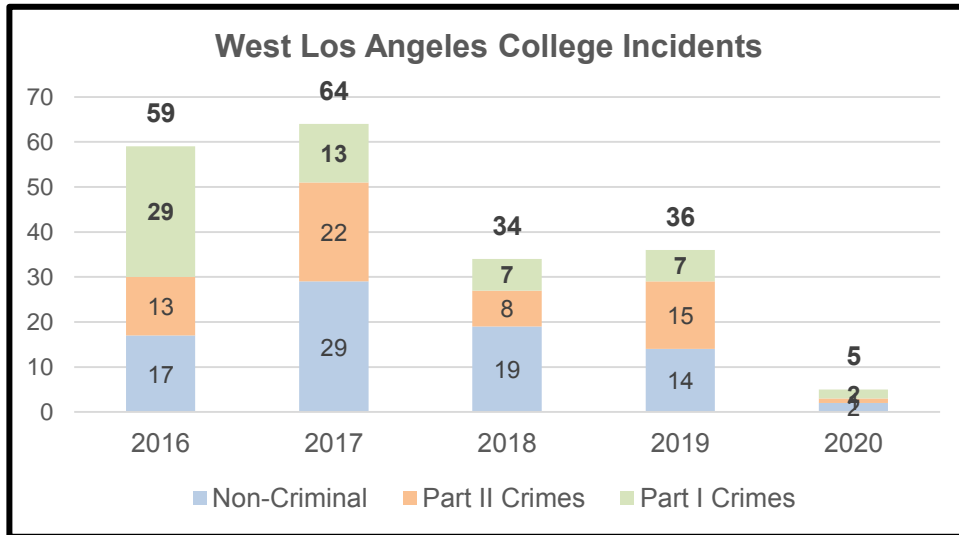
The new Technology Center and Watson Center is projected to be completed by May of 2021. Additionally, West Los Angeles Sheriff's personnel are eagerly awaiting the opening of their new Sheriff's station.

HIGHLIGHTS

West Los Angeles College offered aviation, nursing and dental hygiene courses during the Coronavirus pandemic with adherence to CDC guidelines. This campus also owns a building off-site, near LAX, where Community Colleges Bureau provides security patrols daily.

STAFFING LEVEL

1 Team Leader
2 Deputies
9 Security Officers





YEAR:	2016	2017	2018	2019	2020
Non-criminal Incidents on College campus	17	29	19	14	2
Incidents referred to Dean of Discipline	10	12	11	32	0
Disciplinary Hearings assisted by the Bureau	10	12	11	0	0
Watch Commander Service Comment Reports	0	0	0	1	0
Special Events staffed by the Bureau	45	43	66	66	116
Student Injury Reports	39	29	17	24	0
Students / Staff escorted throughout the campus	0	0	0	15	26
# of Parking Tickets Issued	N/A	N/A	N/A	1,722	77
Annual Billings – Citation Revenues	N/A	N/A	N/A	\$65,062	\$19,360
Total # of Responses to Facility Alarms	2	11	3	25	38
# of Graffiti or Vandalism Incidents	1	4	3	5	1



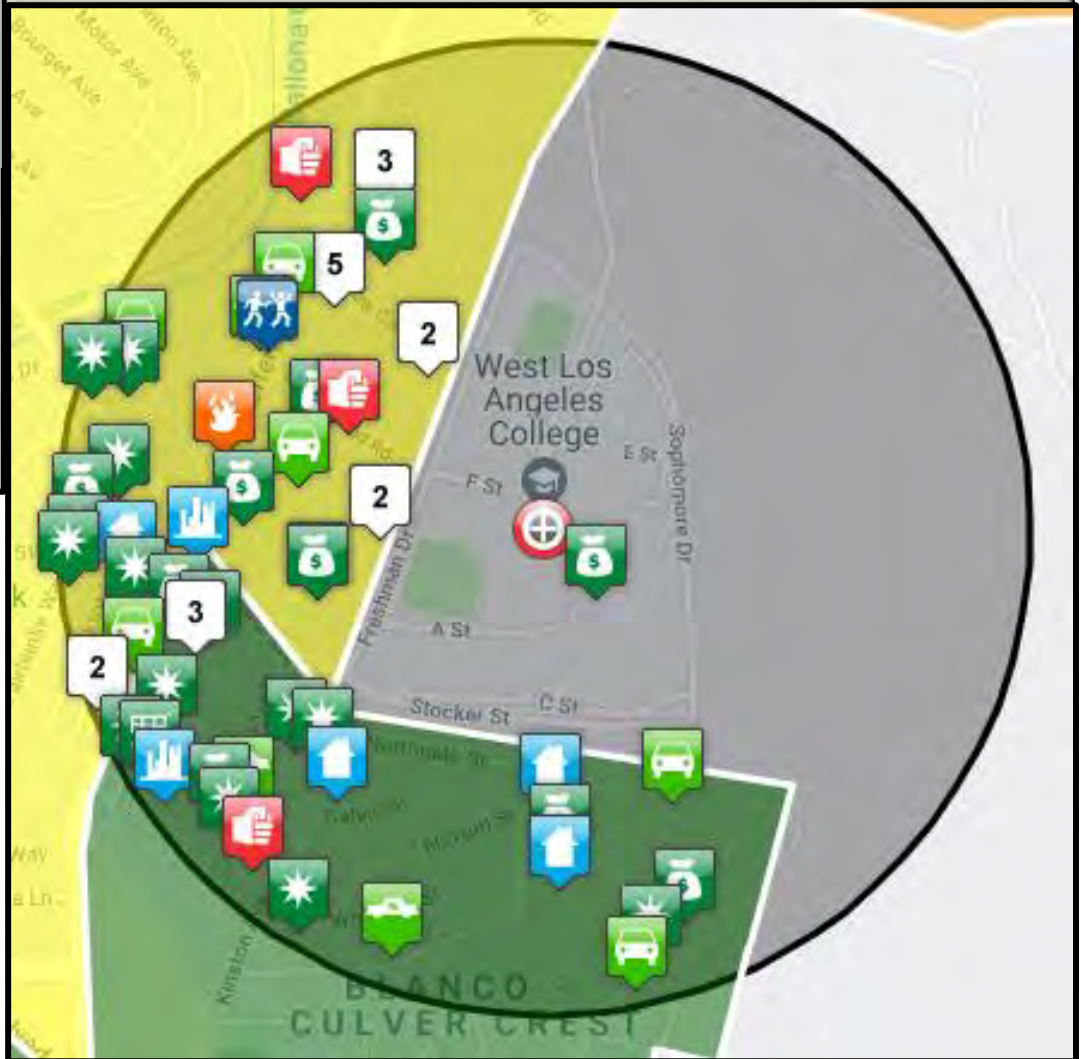
MAP ICONS

	Homicide / Manslaughter
	Arson
	Assault - Aggravated
	Attempted Homicide
	Burglary - Commercial
	Burglary - Residential
	Burglary from Motor Vehicle
	Motor Vehicle Theft
	Robbery - Commercial
	Robbery - Individual
	Sexual Assault
	Shoplifting
	Theft
	Theft - Other

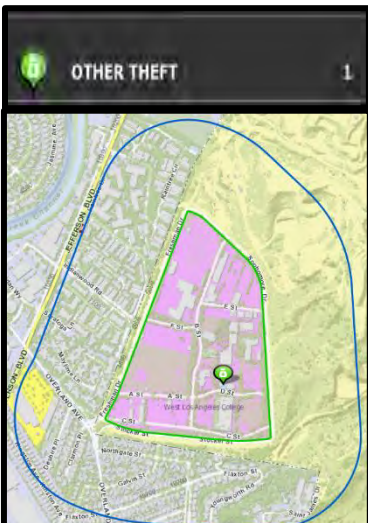
West Los Angeles College & Surrounding Area

1/2 mile radius

2020 Part I Crimes*



LEGEND (LASD data only*)

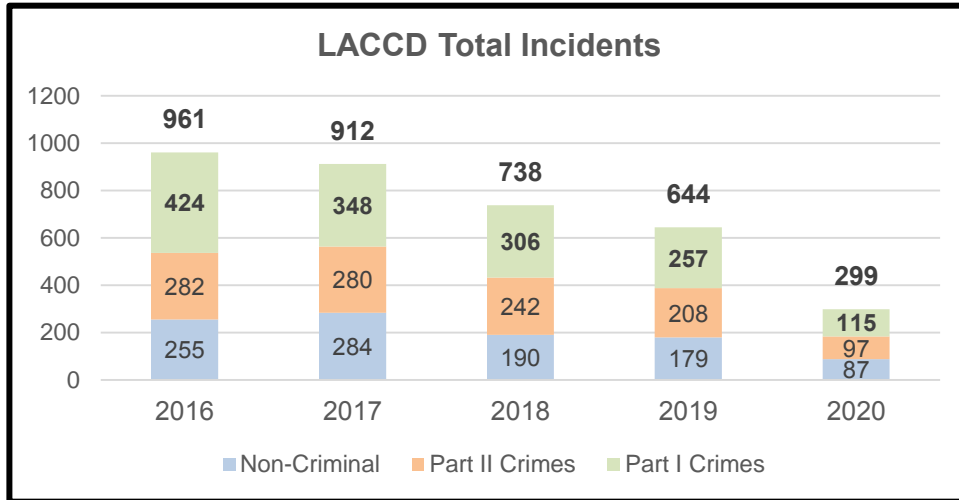


Source: Omega Dashboard for the small map and LexisNexis/Accurant for the big map as of as of 2/28/21;
 *Culver City PD & some LASD data are shown on the big map. The LexisNexis/Accurant application cannot show counts in the legend or data in a 1000 ft radius of the campus boundary, so the closest comparison of .5 miles from the campus center has been used.

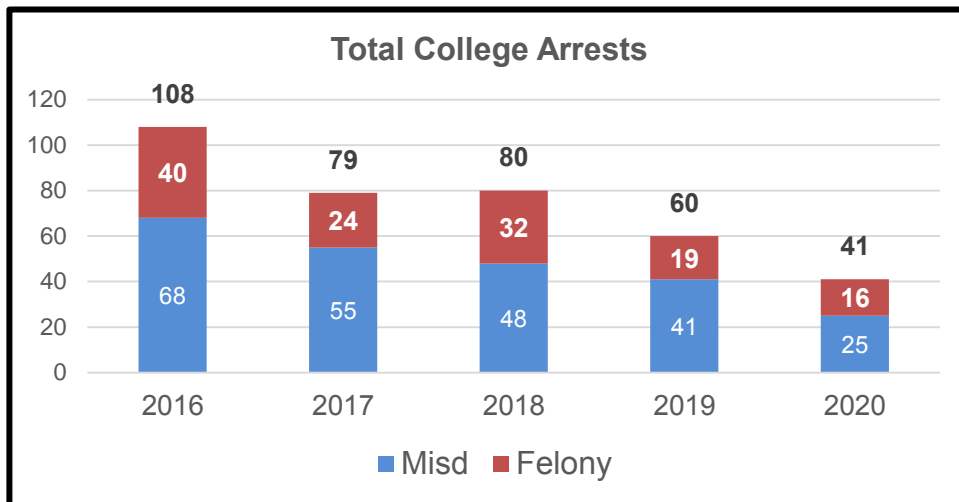
*Source for small map: Omega Dashboard as of 8/12/20; only contains LASD data)



Reported Incidents



Arrests



Annual Survey Results

This section of the 2021 Performance Report provides a summary of findings from surveys completed during 2020 by a relatively limited number of students who attended classes in-person for at least some portion of the academic year. The pandemic was a severe limiting factor and hampered efforts to obtain a larger survey sampling due to campus closures and restrictions. During this period, most classes were offered online, which also severely limited the frequency of encounters between Community College Bureau staff and students on campuses.

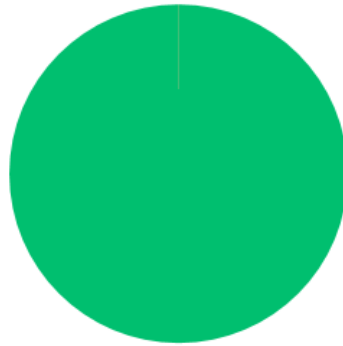
Collection and reporting of this survey data is a requirement within "Appendix-A" of the current contract between the Sheriff's Department and the Los Angeles Community College District.



L.A. CITY COLLEGE

How safe do you feel on campus?

Answered: 4 Skipped: 0

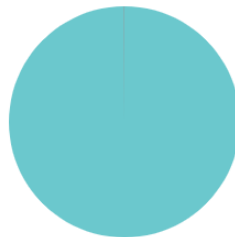


Very safe Safe Unsafe

ANSWER CHOICES	RESPONSES	
Very safe	100.00%	4
Safe	0.00%	0
Unsafe	0.00%	0
TOTAL		4

Please identify your primary concerns regarding CRIMINAL activity on our campus:

Answered: 1 Skipped: 0



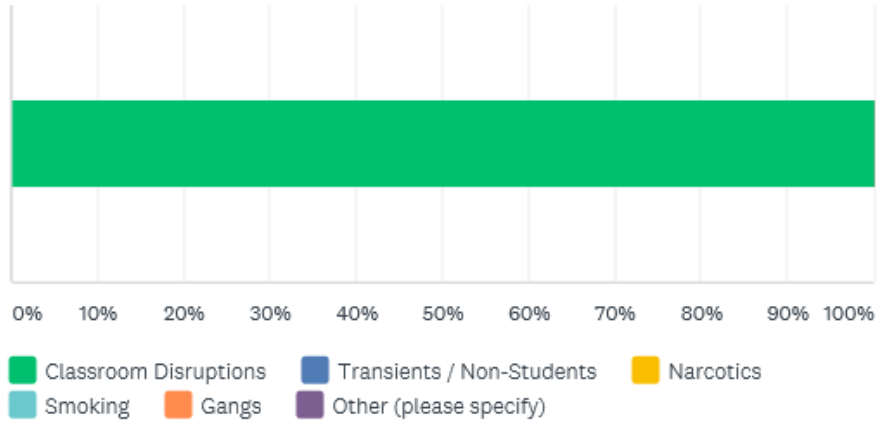
Thefts Gangs Vandalism Narcotics Violent Crimes Other (please specify)

ANSWER CHOICES	RESPONSES	
▼ Thefts	0.00%	0
▼ Gangs	0.00%	0
▼ Vandalism	0.00%	0
▼ Narcotics	100.00%	1
▼ Violent Crimes	0.00%	0
▼ Other (please specify)	Responses	0.00%
TOTAL		1



Please identify your primary concern regarding NUISANCE activity on campus:

Answered: 1 Skipped: 3

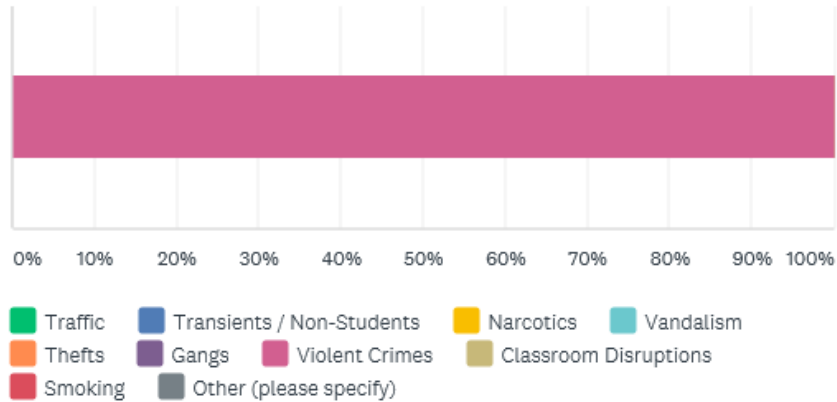


ANSWER CHOICES	RESPONSES	
Classroom Disruptions	100.00%	1
Transients / Non-Students	0.00%	0
Narcotics	0.00%	0
Smoking	0.00%	0
Gangs	0.00%	0
Other (please specify)	0.00%	0
TOTAL		1



What problem would you want solved FIRST on campus?

Answered: 1 Skipped: 3

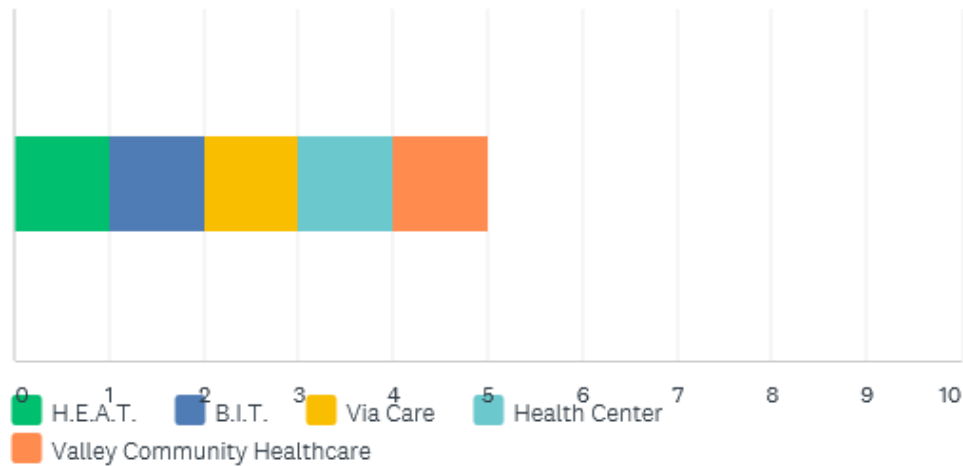


ANSWER CHOICES	RESPONSES	
Traffic	0.00%	0
Transients / Non-Students	0.00%	0
Narcotics	0.00%	0
Vandalism	0.00%	0
Thefts	0.00%	0
Gangs	0.00%	0
Violent Crimes	100.00%	1
Classroom Disruptions	0.00%	0
Smoking	0.00%	0
Other (please specify)	0.00%	0
TOTAL		1



Which of the following Mental Health / Counseling Services are you aware of?

Answered: 1 Skipped: 3



ANSWER CHOICES	RESPONSES
H.E.A.T.	100.00% 1
B.I.T.	100.00% 1
Via Care	100.00% 1
Health Center	100.00% 1
Valley Community Healthcare	100.00% 1
Total Respondents: 1	



How satisfied are you with the service provided by the LASD Community College Bureau?

Answered: 0 Skipped: 4

⚠ No matching responses.

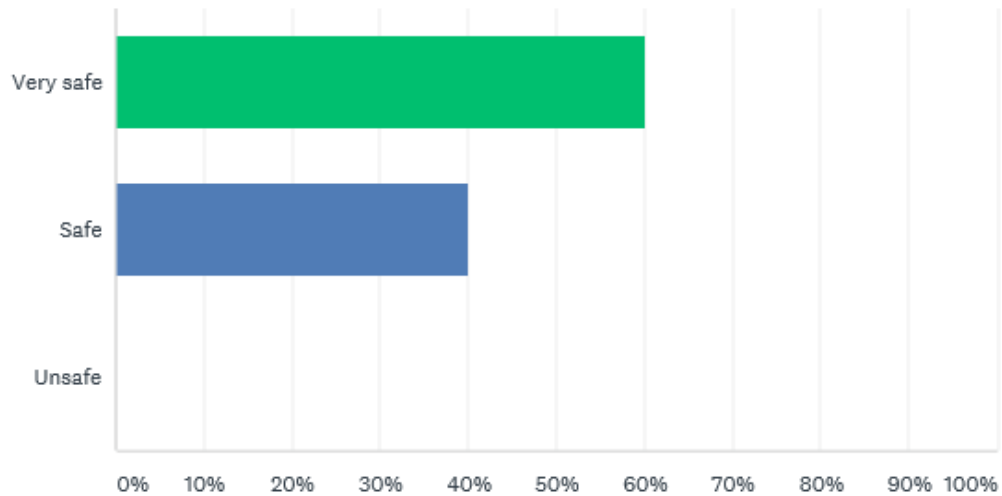
ANSWER CHOICES	RESPONSES	
Very satisfied	0.00%	0
Satisfied	0.00%	0
Dissatisfied	0.00%	0
TOTAL		0



EAST L.A. COLLEGE

How safe do you feel on campus?

Answered: 5 Skipped: 0

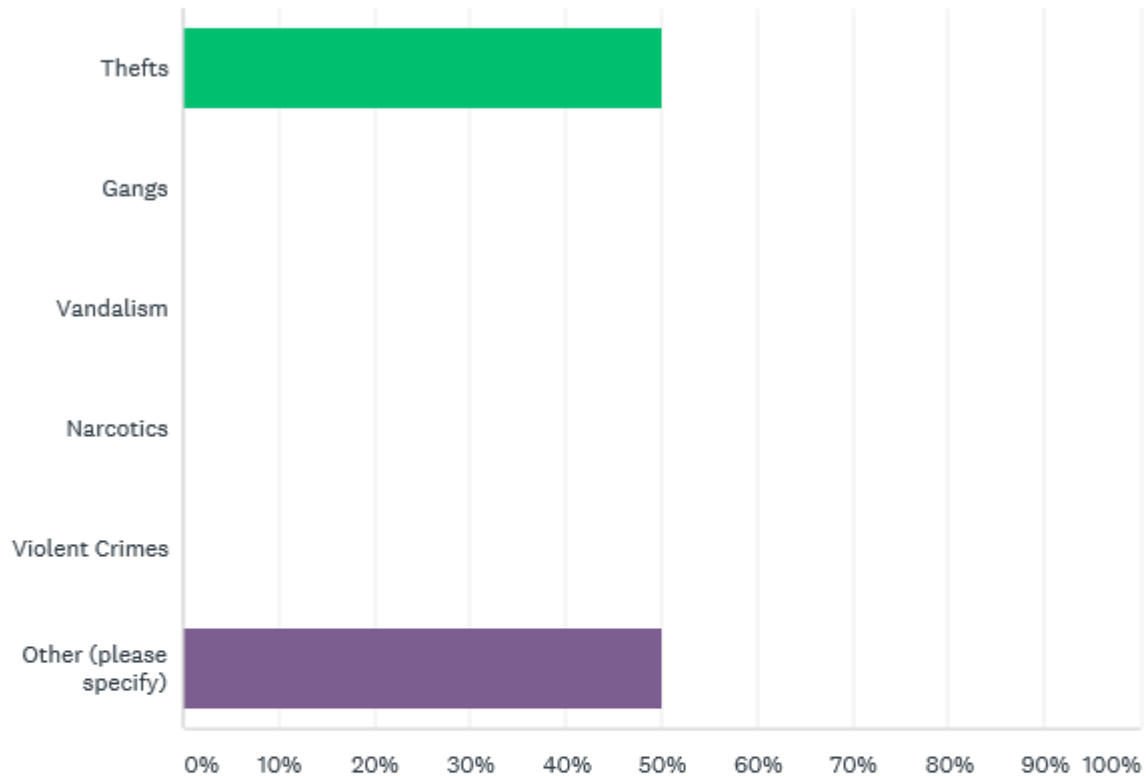


ANSWER CHOICES	RESPONSES	
Very safe	60.00%	3
Safe	40.00%	2
Unsafe	0.00%	0
TOTAL		5



Please identify your primary concern regarding CRIMINAL activity on campus:

Answered: 4 Skipped: 1

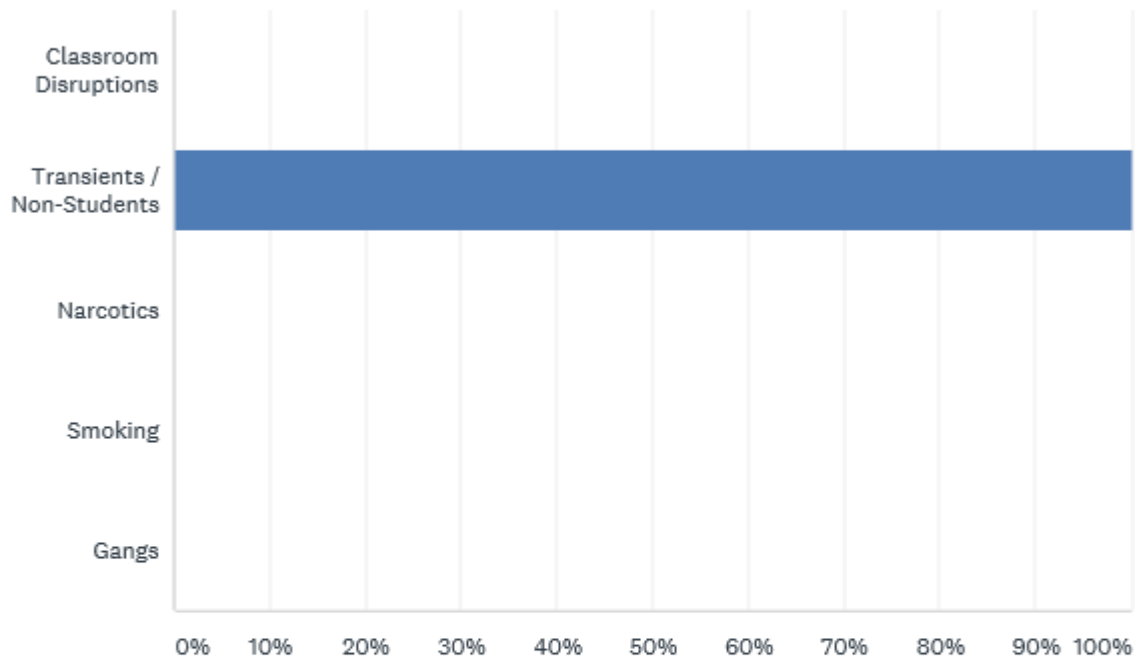


ANSWER CHOICES	RESPONSES	
Thefts	50.00%	2
Gangs	0.00%	0
Vandalism	0.00%	0
Narcotics	0.00%	0
Violent Crimes	0.00%	0
Other (please specify)	50.00%	2
TOTAL		4



Please identify your primary concern regarding NUISANCE activity on campus:

Answered: 3 Skipped: 2

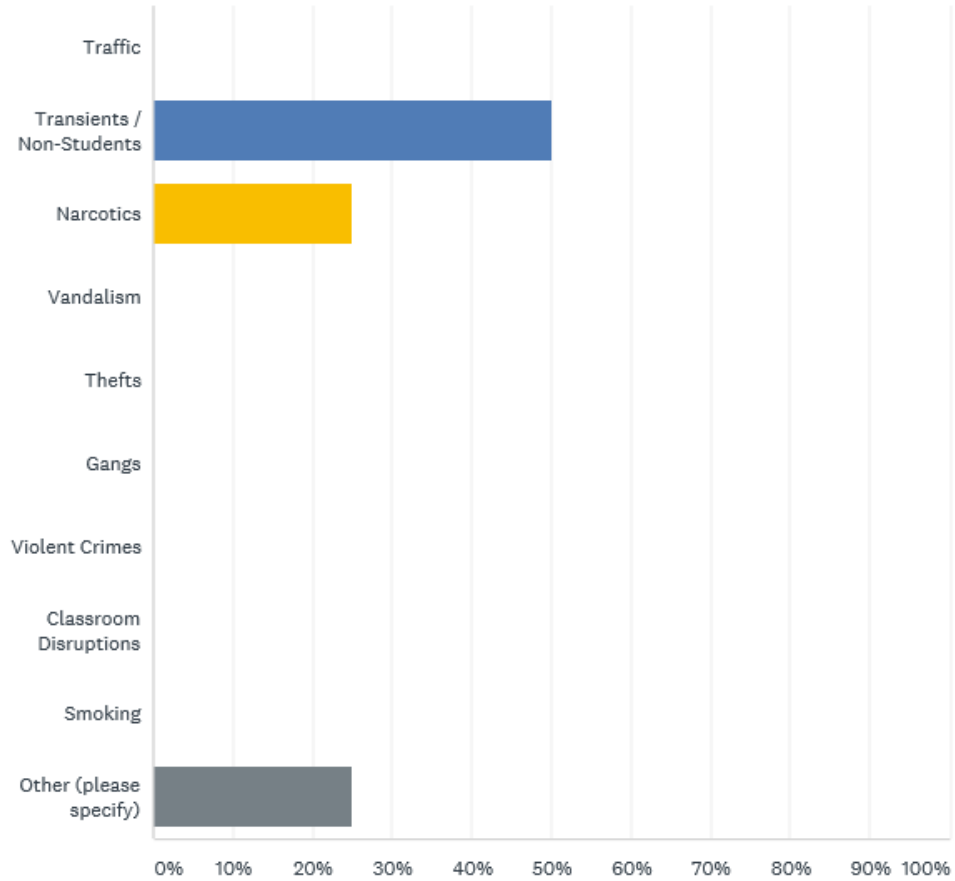


ANSWER CHOICES	RESPONSES	
Classroom Disruptions	0.00%	0
Transients / Non-Students	100.00%	3
Narcotics	0.00%	0
Smoking	0.00%	0
Gangs	0.00%	0
TOTAL		3



What problem would you want solved FIRST on campus?

Answered: 4 Skipped: 1

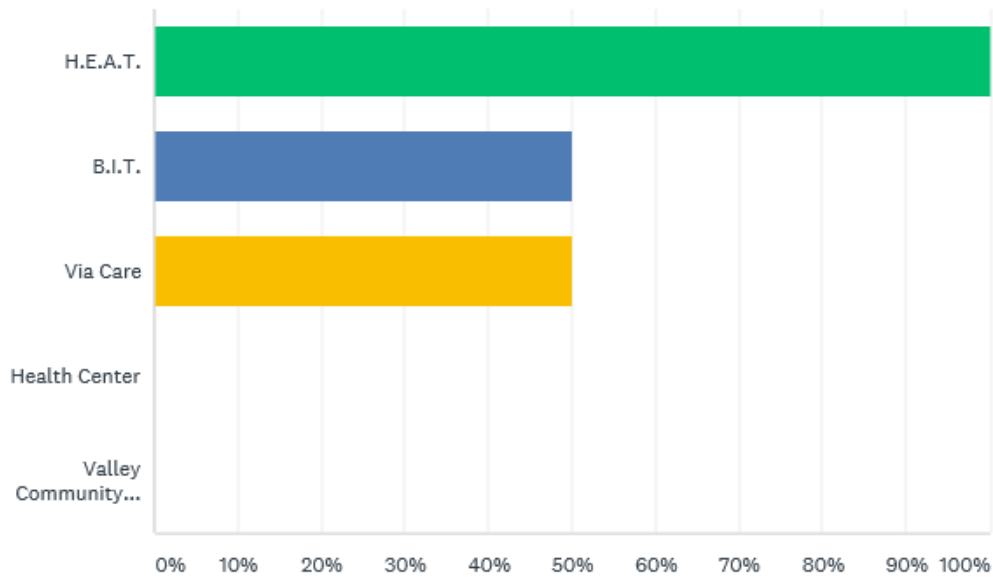


ANSWER CHOICES	RESPONSES	
Traffic	0.00%	0
Transients / Non-Students	50.00%	2
Narcotics	25.00%	1
Vandalism	0.00%	0
Thefts	0.00%	0
Gangs	0.00%	0
Violent Crimes	0.00%	0
Classroom Disruptions	0.00%	0
Smoking	0.00%	0
Other (please specify)	25.00%	1
TOTAL		4



Which of the following Mental Health / Counseling Services are you aware of?

Answered: 2 Skipped: 3

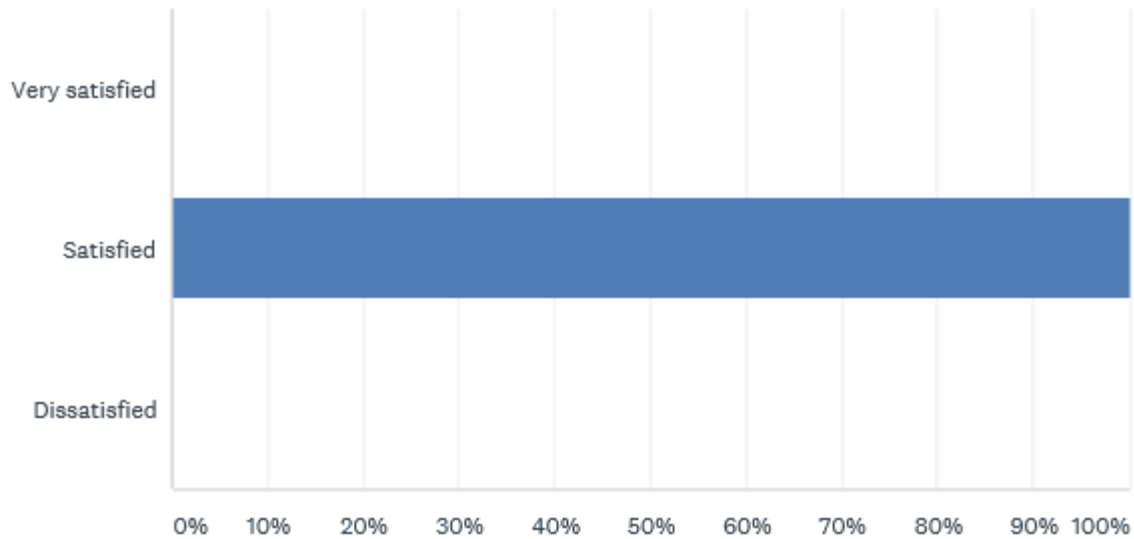


ANSWER CHOICES	RESPONSES	
H.E.A.T.	100.00%	2
B.I.T.	50.00%	1
Via Care	50.00%	1
Health Center	0.00%	0
Valley Community Healthcare	0.00%	0
Total Respondents: 2		



How satisfied are you with the service provided by the LASD Community College Bureau?

Answered: 3 Skipped: 2

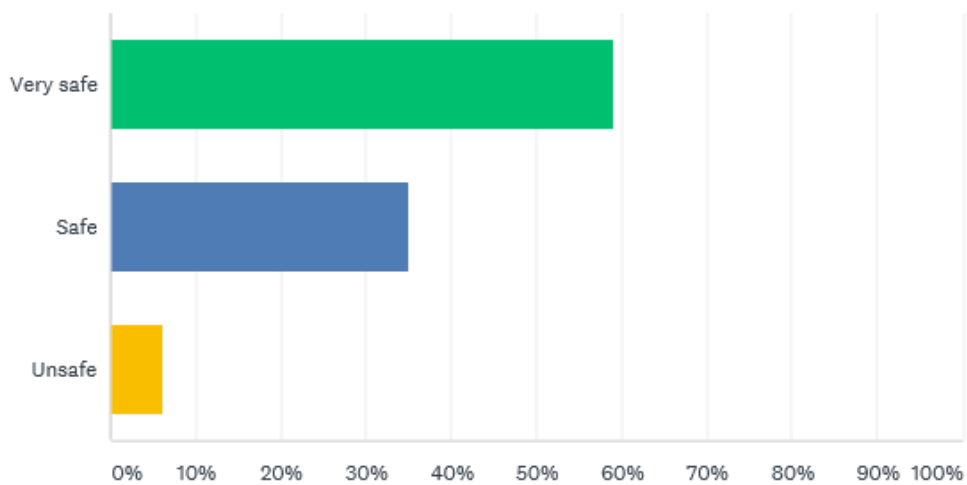


ANSWER CHOICES	RESPONSES	
Very satisfied	0.00%	0
Satisfied	100.00%	3
Dissatisfied	0.00%	0
TOTAL		3

HARBOR COLLEGE

How safe do you feel on campus?

Answered: 66 Skipped: 1

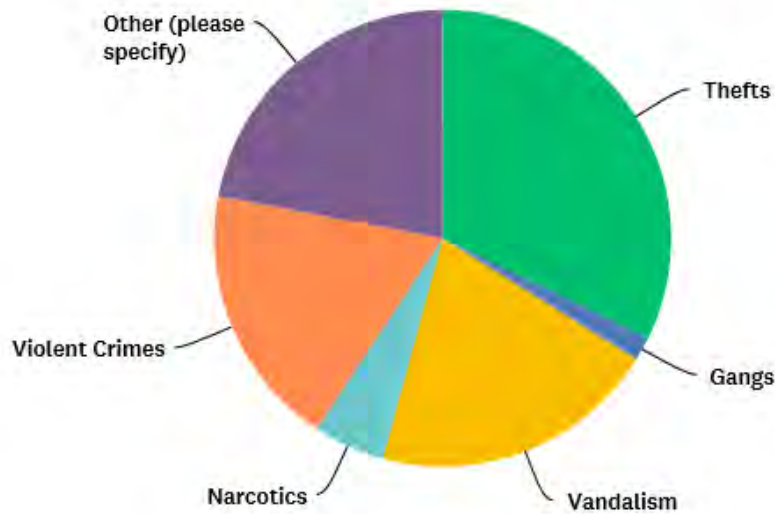


ANSWER CHOICES	RESPONSES	
Very safe	59.09%	39
Safe	34.85%	23
Unsafe	6.06%	4
TOTAL		66



Please identify your primary concern regarding CRIMINAL activity on campus:

Answered: 59 Skipped: 8

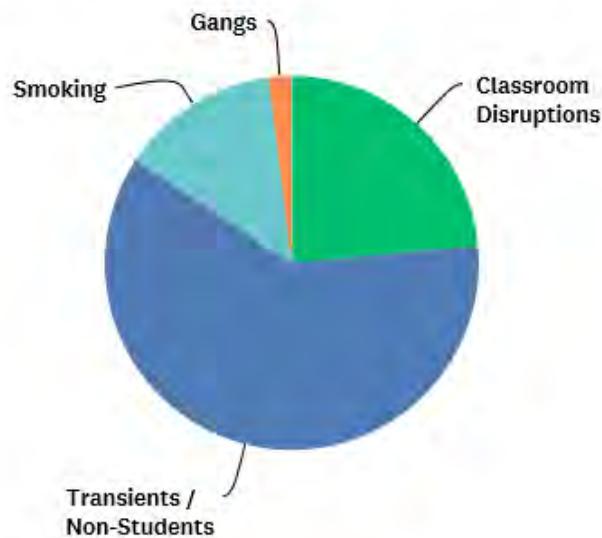


ANSWER CHOICES	RESPONSES	
Thefts	32.20%	19
Gangs	1.69%	1
Vandalism	20.34%	12
Narcotics	5.08%	3
Violent Crimes	18.64%	11
Other (please specify)	22.03%	13
TOTAL		59



Please identify your primary concern regarding NUISANCE activity on campus:

Answered: 51 Skipped: 16

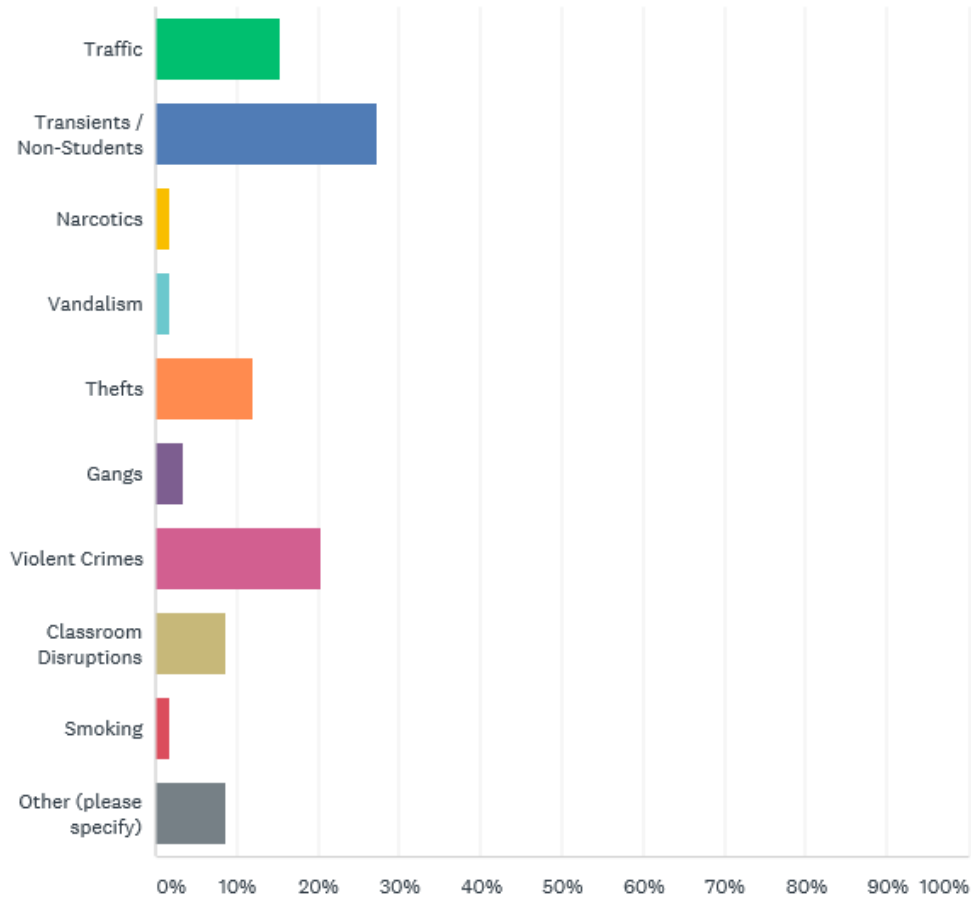


ANSWER CHOICES	RESPONSES	
Classroom Disruptions	23.53%	12
Transients / Non-Students	60.78%	31
Narcotics	0.00%	0
Smoking	13.73%	7
Gangs	1.96%	1
TOTAL		51



What problem would you want solved FIRST on campus?

Answered: 59 Skipped: 8

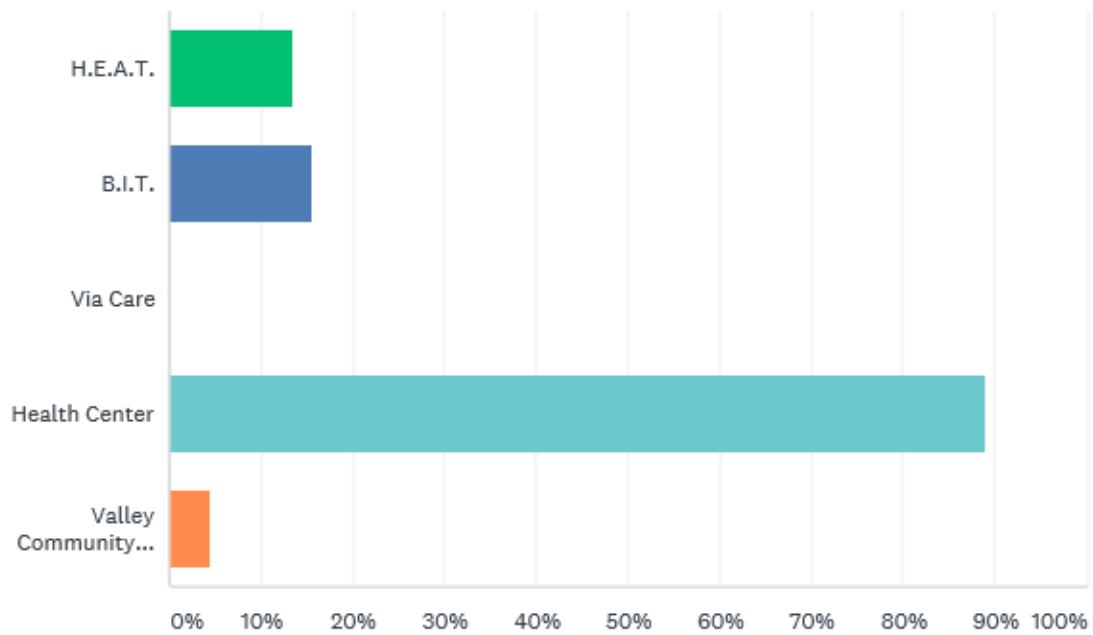


ANSWER CHOICES	RESPONSES	
Traffic	15.25%	9
Transients / Non-Students	27.12%	16
Narcotics	1.69%	1
Vandalism	1.69%	1
Thefts	11.86%	7
Gangs	3.39%	2
Violent Crimes	20.34%	12
Classroom Disruptions	8.47%	5
Smoking	1.69%	1
Other (please specify)	8.47%	5
TOTAL		59



Which of the following Mental Health / Counseling Services are you aware of?

Answered: 45 Skipped: 22

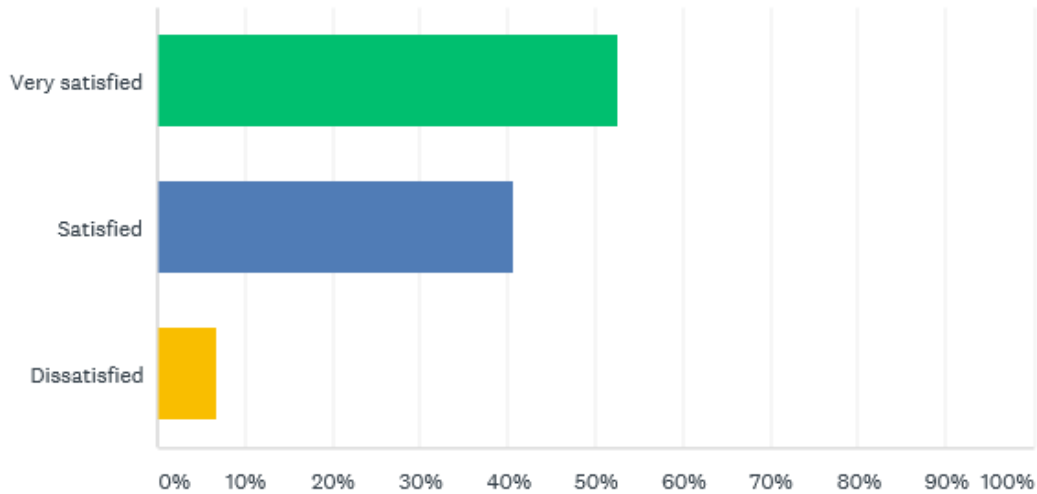


ANSWER CHOICES	RESPONSES	
H.E.A.T.	13.33%	6
B.I.T.	15.56%	7
Via Care	0.00%	0
Health Center	88.89%	40
Valley Community Healthcare	4.44%	2
Total Respondents: 45		



How satisfied are you with the service provided by the LASD Community College Bureau?

Answered: 59 Skipped: 8



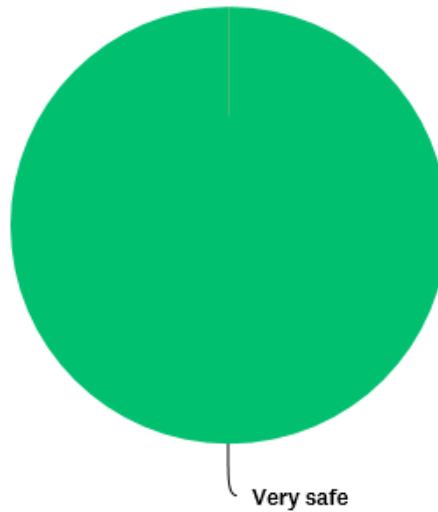
ANSWER CHOICES	RESPONSES	
Very satisfied	52.54%	31
Satisfied	40.68%	24
Dissatisfied	6.78%	4
TOTAL		59



MISSION COLLEGE

How safe do you feel on campus?

Answered: 10 Skipped: 0

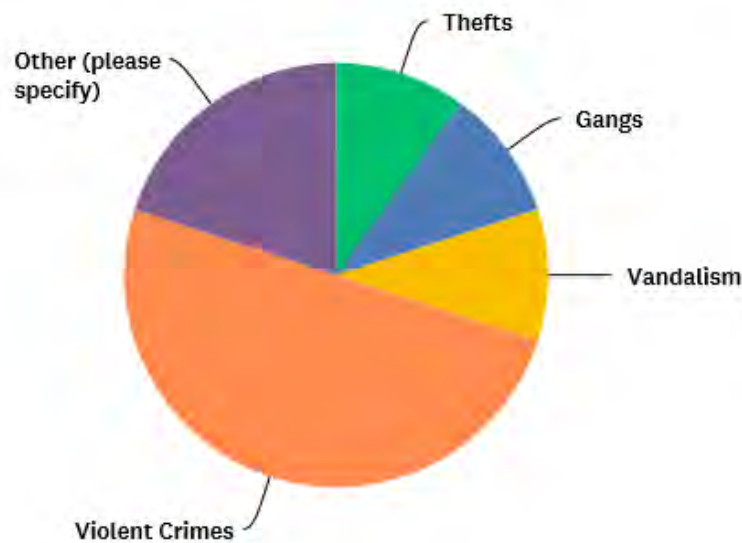


ANSWER CHOICES	RESPONSES	
Very safe	100.00%	10
Safe	0.00%	0
Unsafe	0.00%	0
TOTAL		10



Please identify your primary concern regarding CRIMINAL activity on campus:

Answered: 10 Skipped: 0

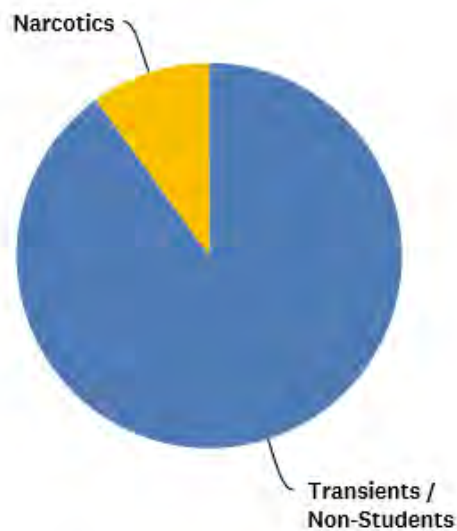


ANSWER CHOICES	RESPONSES	
Thefts	10.00%	1
Gangs	10.00%	1
Vandalism	10.00%	1
Narcotics	0.00%	0
Violent Crimes	50.00%	5
Other (please specify)	20.00%	2
TOTAL		10



Please identify your primary concern regarding NUISANCE activity on campus:

Answered: 10 Skipped: 0

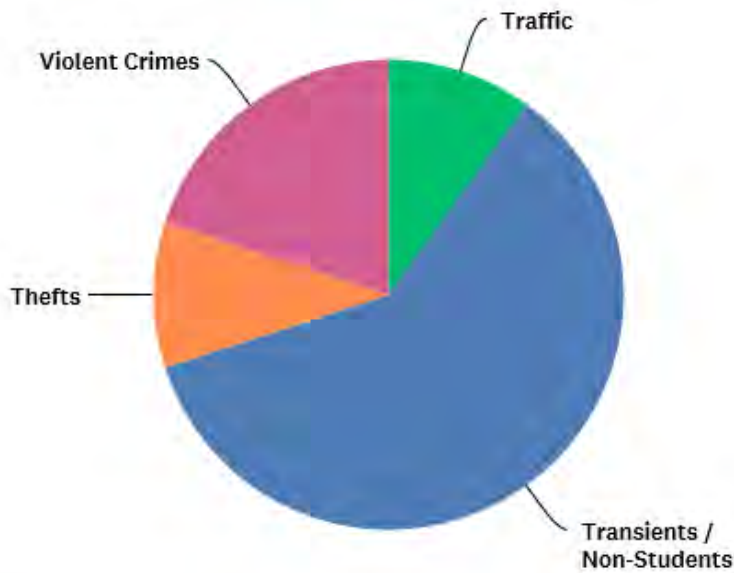


ANSWER CHOICES	RESPONSES	
Classroom Disruptions	0.00%	0
Transients / Non-Students	90.00%	9
Narcotics	10.00%	1
Smoking	0.00%	0
Gangs	0.00%	0
Other (please specify)	0.00%	0
TOTAL		10



What problem would you want solved FIRST on campus?

Answered: 10 Skipped: 0

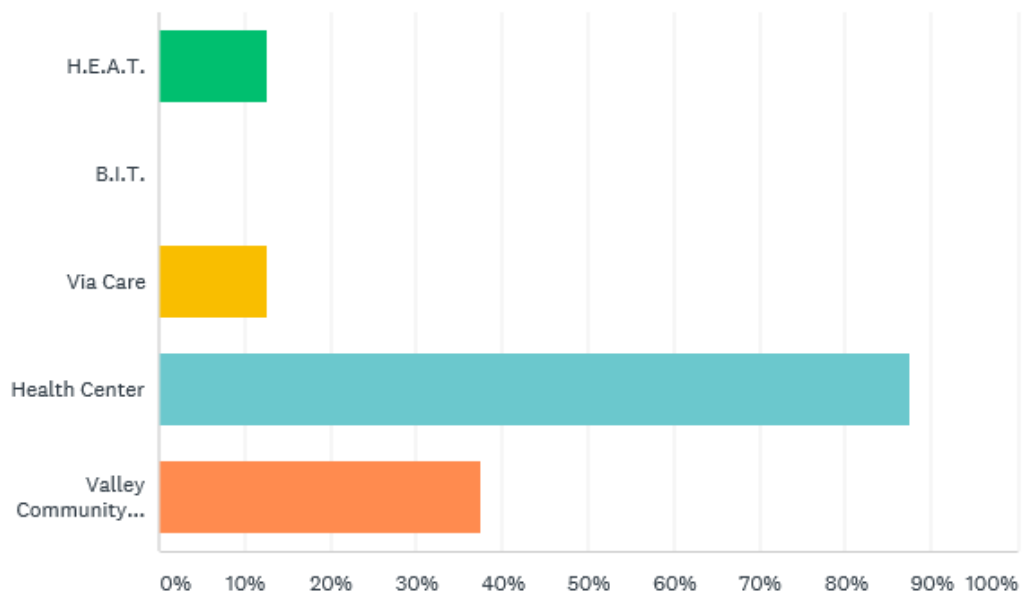


ANSWER CHOICES	RESPONSES	
Traffic	10.00%	1
Transients / Non-Students	60.00%	6
Narcotics	0.00%	0
Vandalism	0.00%	0
Thefts	10.00%	1
Gangs	0.00%	0
Violent Crimes	20.00%	2
Classroom Disruptions	0.00%	0
Smoking	0.00%	0
Other (please specify)	0.00%	0
TOTAL		10



Which of the following Mental Health / Counseling Services are you aware of?

Answered: 8 Skipped: 2

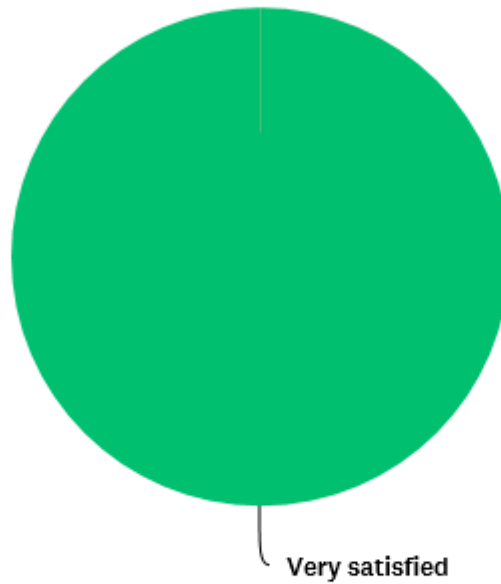


ANSWER CHOICES	RESPONSES
H.E.A.T.	12.50% 1
B.I.T.	0.00% 0
Via Care	12.50% 1
Health Center	87.50% 7
Valley Community Healthcare	37.50% 3
Total Respondents: 8	



How satisfied are you with the service provided by the LASD Community College Bureau?

Answered: 10 Skipped: 0



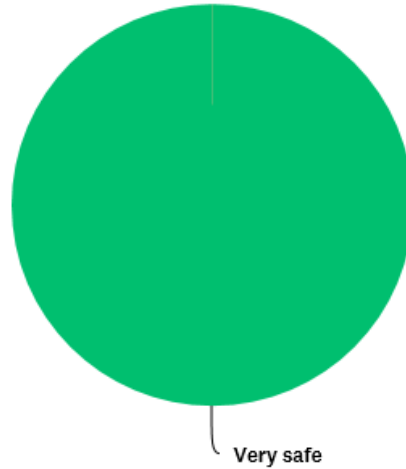
ANSWER CHOICES	RESPONSES	
Very satisfied	100.00%	10
Satisfied	0.00%	0
Dissatisfied	0.00%	0
TOTAL		10



PIERCE COLLEGE

How safe do you feel on campus?

Answered: 5 Skipped: 0

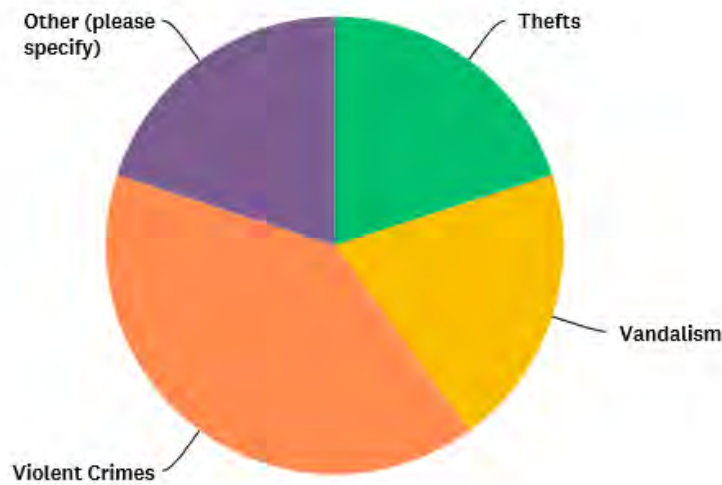


ANSWER CHOICES	RESPONSES	
Very safe	100.00%	5
Safe	0.00%	0
Unsafe	0.00%	0
TOTAL		5



Please identify your primary concern regarding CRIMINAL activity on campus:

Answered: 5 Skipped: 0

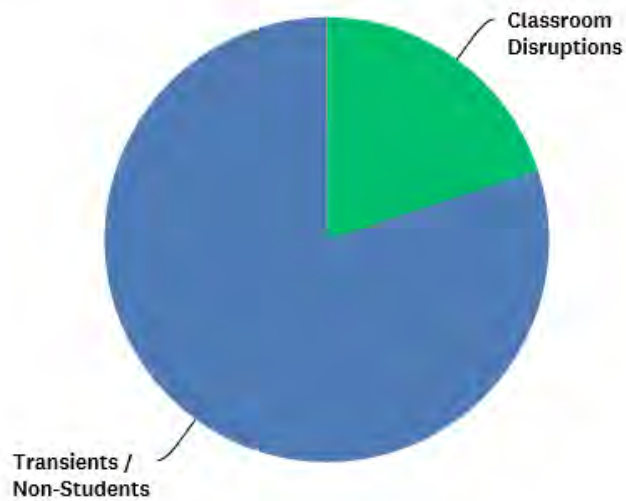


ANSWER CHOICES	RESPONSES	
Thefts	20.00%	1
Gangs	0.00%	0
Vandalism	20.00%	1
Narcotics	0.00%	0
Violent Crimes	40.00%	2
Other (please specify)	20.00%	1
TOTAL		5



Please identify your primary concern regarding NUISANCE activity on campus:

Answered: 5 Skipped: 0

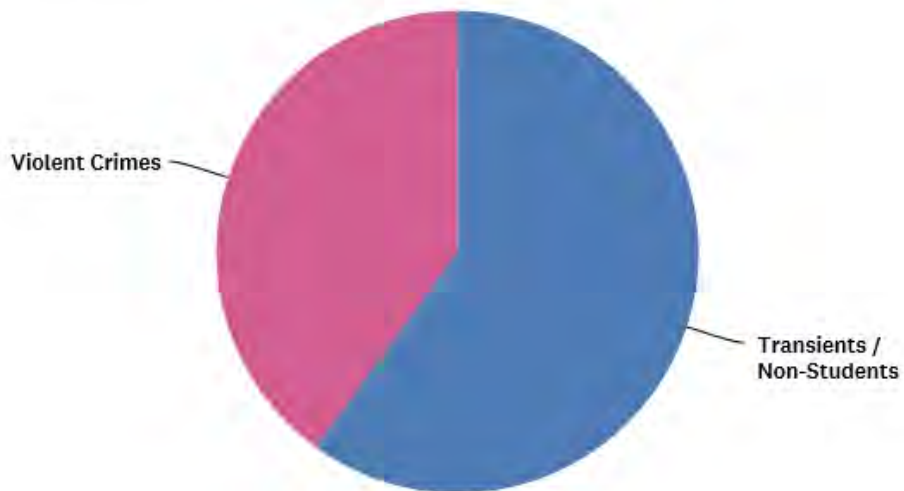


ANSWER CHOICES	RESPONSES	
Classroom Disruptions	20.00%	1
Transients / Non-Students	80.00%	4
Narcotics	0.00%	0
Smoking	0.00%	0
Gangs	0.00%	0
Other (please specify)	0.00%	0
TOTAL		5



What problem would you want solved FIRST on campus?

Answered: 5 Skipped: 0

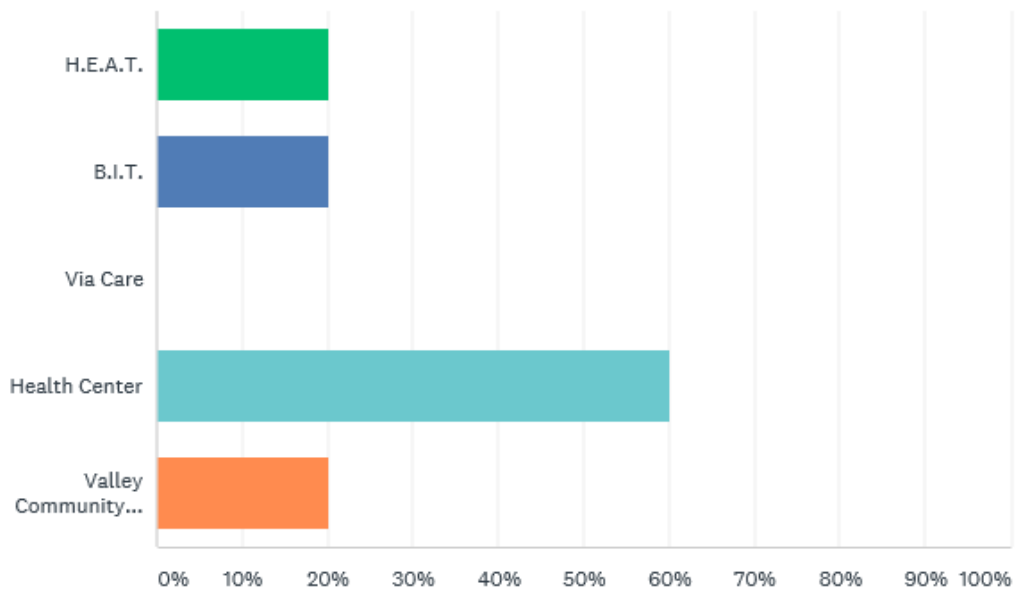


ANSWER CHOICES	RESPONSES	
Traffic	0.00%	0
Transients / Non-Students	60.00%	3
Narcotics	0.00%	0
Vandalism	0.00%	0
Thefts	0.00%	0
Gangs	0.00%	0
Violent Crimes	40.00%	2
Classroom Disruptions	0.00%	0
Smoking	0.00%	0
Other (please specify)	0.00%	0
TOTAL		5



Which of the following Mental Health / Counseling Services are you aware of?

Answered: 5 Skipped: 0

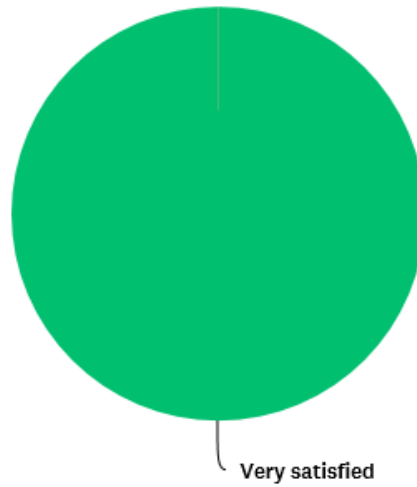


ANSWER CHOICES	RESPONSES
H.E.A.T.	20.00% 1
B.I.T.	20.00% 1
Via Care	0.00% 0
Health Center	60.00% 3
Valley Community Healthcare	20.00% 1
Total Respondents: 5	



How satisfied are you with the service provided by the LASD Community College Bureau?

Answered: 5 Skipped: 0



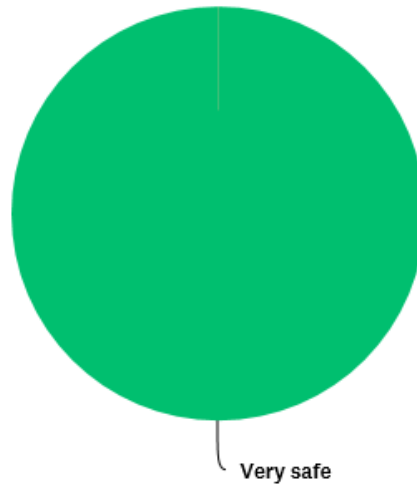
ANSWER CHOICES	RESPONSES	
Very satisfied	100.00%	5
Satisfied	0.00%	0
Dissatisfied	0.00%	0
TOTAL		5



SOUTHWEST COLLEGE

How safe do you feel on campus?

Answered: 2 Skipped: 0

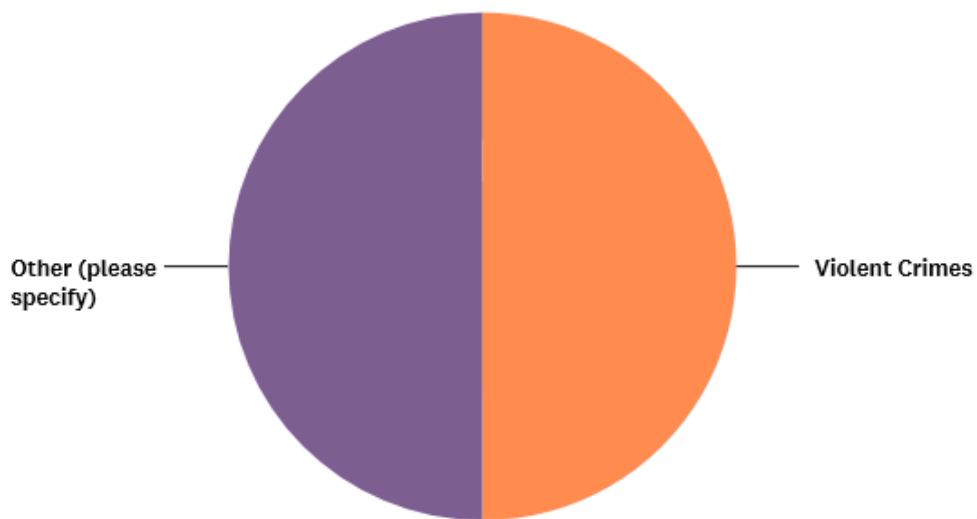


ANSWER CHOICES	RESPONSES	
Very safe	100.00%	2
Safe	0.00%	0
Unsafe	0.00%	0
TOTAL		2



Please identify your primary concern regarding CRIMINAL activity on campus:

Answered: 2 Skipped: 0

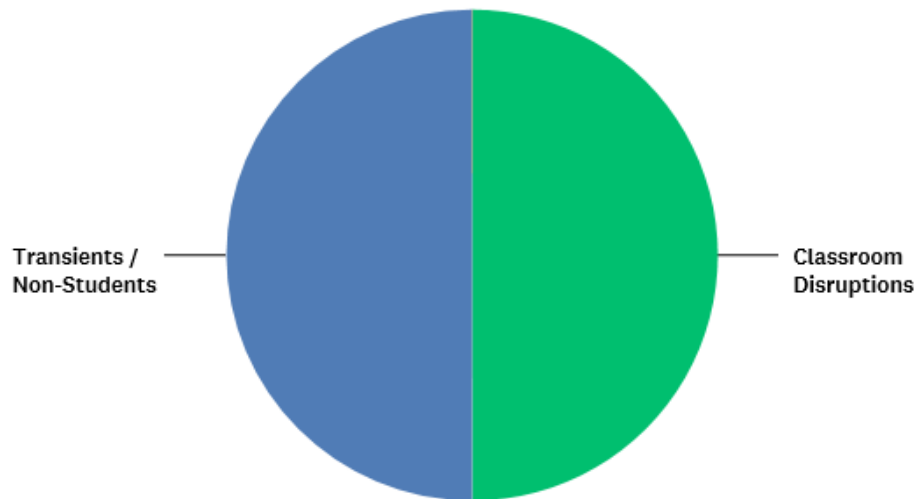


ANSWER CHOICES	RESPONSES	
Thefts	0.00%	0
Gangs	0.00%	0
Vandalism	0.00%	0
Narcotics	0.00%	0
Violent Crimes	50.00%	1
Other (please specify)	50.00%	1
TOTAL		2



Please identify your primary concern regarding NUISANCE activity on campus:

Answered: 2 Skipped: 0

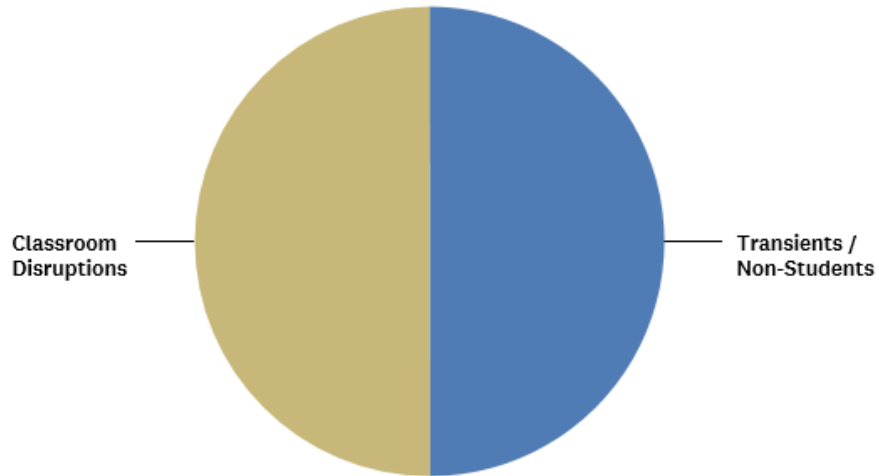


ANSWER CHOICES	RESPONSES	
Classroom Disruptions	50.00%	1
Transients / Non-Students	50.00%	1
Narcotics	0.00%	0
Smoking	0.00%	0
Gangs	0.00%	0
Other (please specify)	0.00%	0
TOTAL		2



What problem would you want solved FIRST on campus?

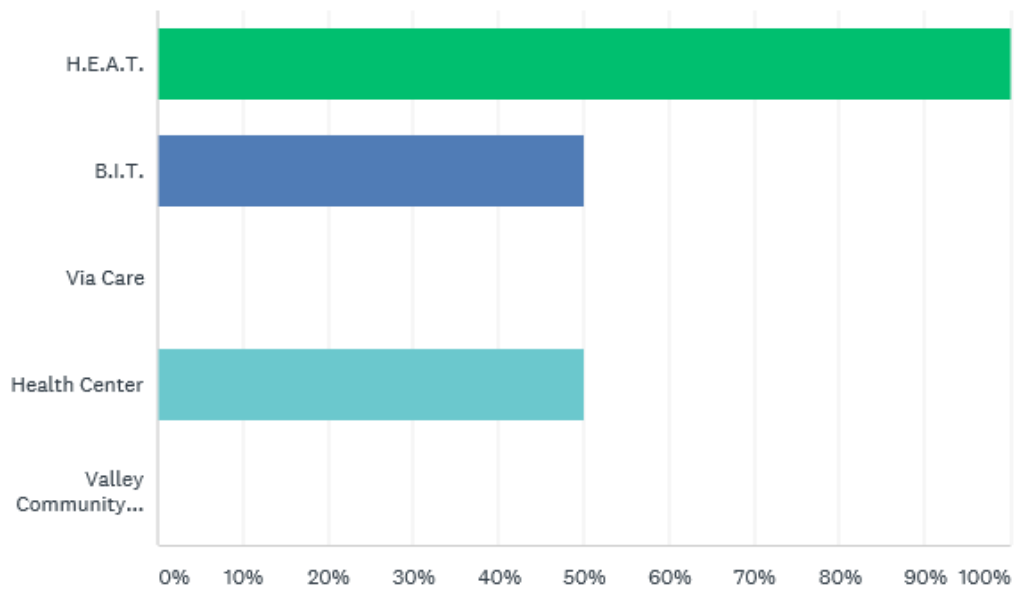
Answered: 2 Skipped: 0



ANSWER CHOICES	RESPONSES	
Traffic	0.00%	0
Transients / Non-Students	50.00%	1
Narcotics	0.00%	0
Vandalism	0.00%	0
Thefts	0.00%	0
Gangs	0.00%	0
Violent Crimes	0.00%	0
Classroom Disruptions	50.00%	1
Smoking	0.00%	0
Other (please specify)	0.00%	0
TOTAL		2

Which of the following Mental Health / Counseling Services are you aware of?

Answered: 2 Skipped: 0

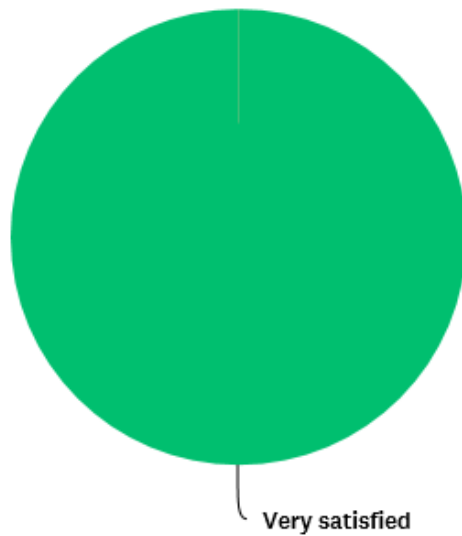


ANSWER CHOICES	RESPONSES	
H.E.A.T.	100.00%	2
B.I.T.	50.00%	1
Via Care	0.00%	0
Health Center	50.00%	1
Valley Community Healthcare	0.00%	0
Total Respondents: 2		



How satisfied are you with the service provided by the
LASD Community College Bureau?

Answered: 2 Skipped: 0



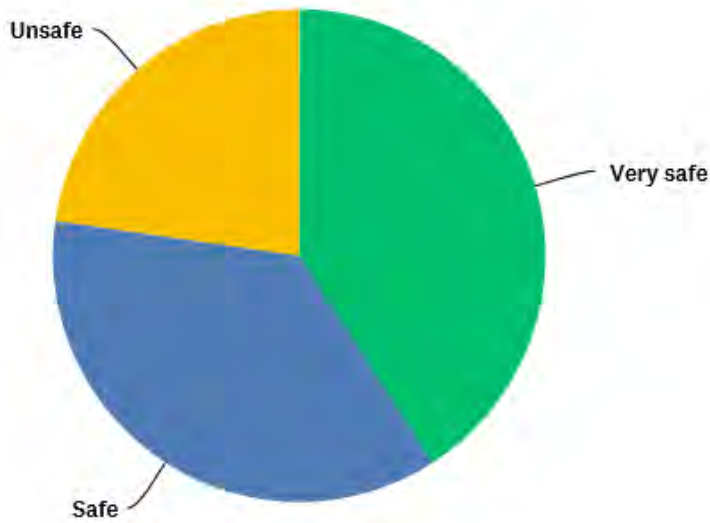
ANSWER CHOICES	RESPONSES	
Very satisfied	100.00%	2
Satisfied	0.00%	0
Dissatisfied	0.00%	0
TOTAL		2



TRADE TECH COLLEGE

How safe do you feel on campus?

Answered: 22 Skipped: 0

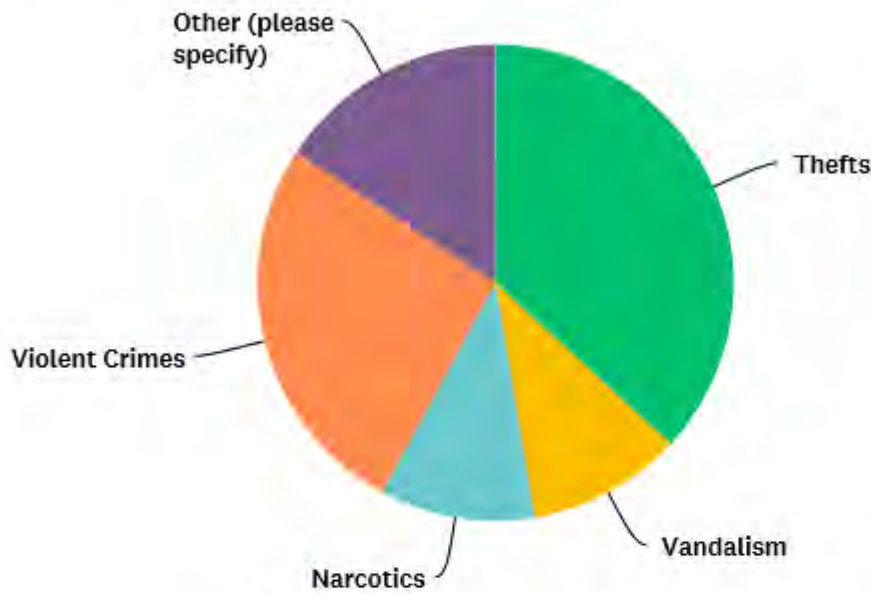


ANSWER CHOICES	RESPONSES	
Very safe	40.91%	9
Safe	36.36%	8
Unsafe	22.73%	5
TOTAL		22



Please identify your primary concern regarding CRIMINAL activity on campus:

Answered: 19 Skipped: 3

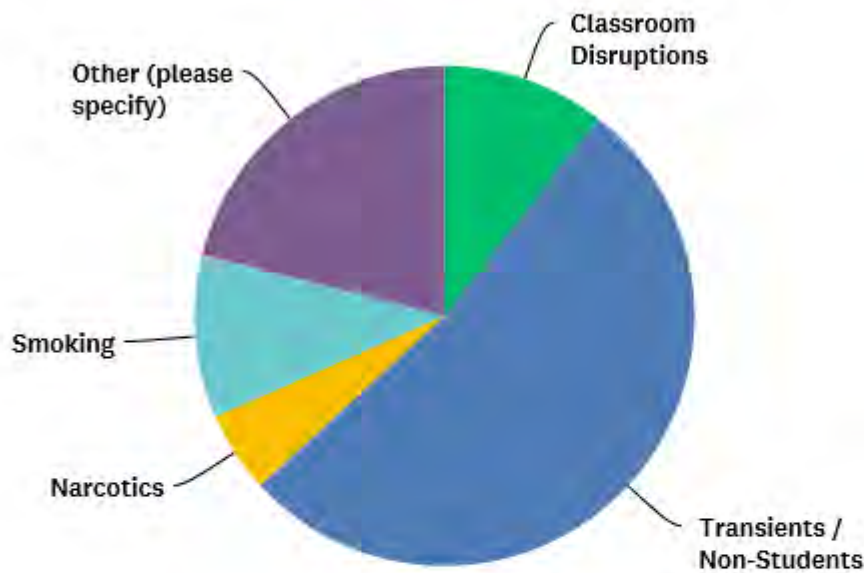


ANSWER CHOICES	RESPONSES	
Thefts	36.84%	7
Gangs	0.00%	0
Vandalism	10.53%	2
Narcotics	10.53%	2
Violent Crimes	26.32%	5
Other (please specify)	15.79%	3
TOTAL		19



Please identify your primary concern regarding NUISANCE activity on campus:

Answered: 19 Skipped: 3

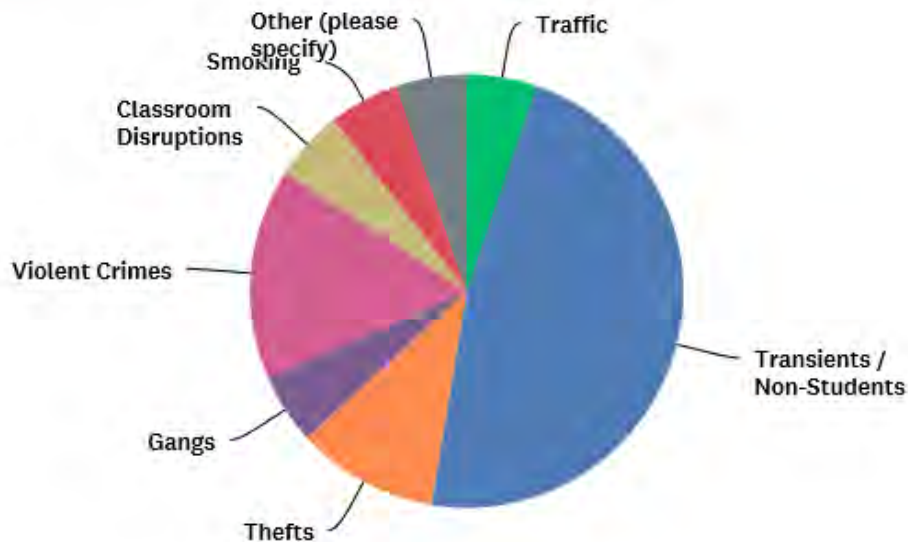


ANSWER CHOICES	RESPONSES	
Classroom Disruptions	10.53%	2
Transients / Non-Students	52.63%	10
Narcotics	5.26%	1
Smoking	10.53%	2
Gangs	0.00%	0
Other (please specify)	21.05%	4
TOTAL		19



What problem would you want solved FIRST on campus?

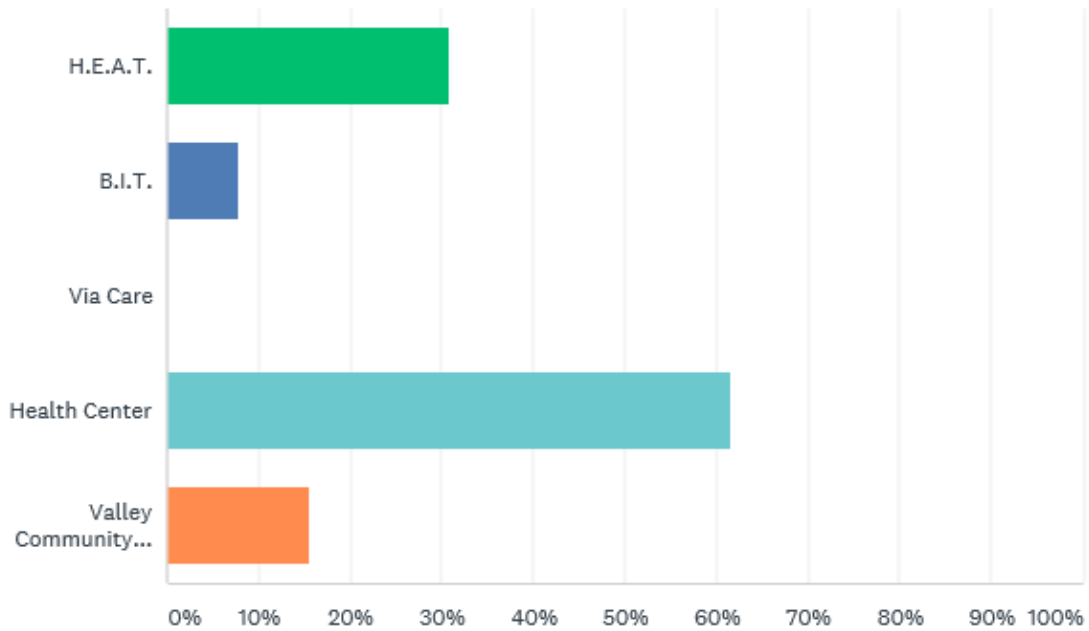
Answered: 19 Skipped: 3



ANSWER CHOICES	RESPONSES	
Traffic	5.26%	1
Transients / Non-Students	47.37%	9
Narcotics	0.00%	0
Vandalism	0.00%	0
Thefts	10.53%	2
Gangs	5.26%	1
Violent Crimes	15.79%	3
Classroom Disruptions	5.26%	1
Smoking	5.26%	1
Other (please specify)	5.26%	1
TOTAL		19

Which of the following Mental Health / Counseling Services are you aware of?

Answered: 13 Skipped: 9

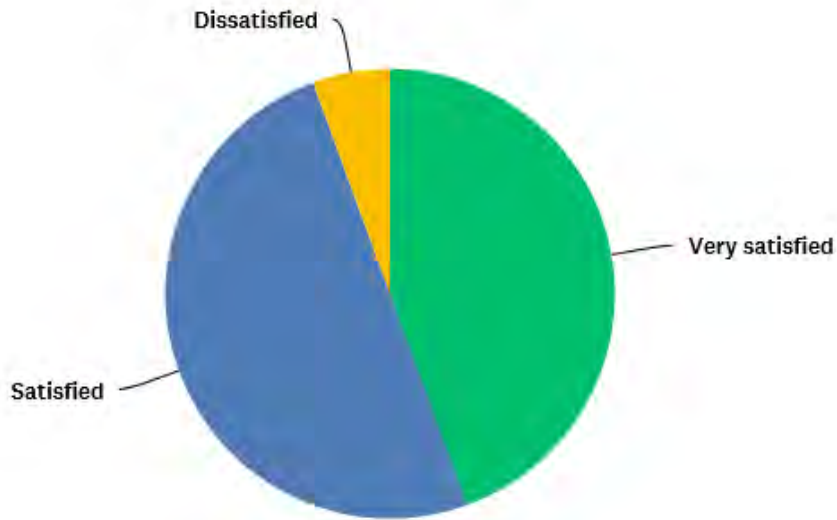


ANSWER CHOICES	RESPONSES
H.E.A.T.	30.77% 4
B.I.T.	7.69% 1
Via Care	0.00% 0
Health Center	61.54% 8
Valley Community Healthcare	15.38% 2
Total Respondents: 13	



How satisfied are you with the service provided by the LASD Community College Bureau?

Answered: 18 Skipped: 4



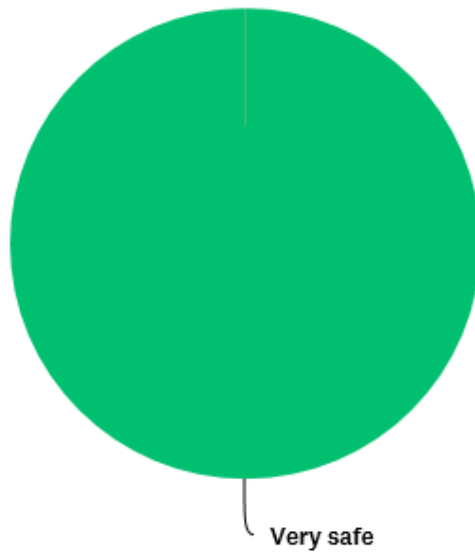
ANSWER CHOICES	RESPONSES	
Very satisfied	44.44%	8
Satisfied	50.00%	9
Dissatisfied	5.56%	1
TOTAL		18



VALLEY COLLEGE

How safe do you feel on campus?

Answered: 2 Skipped: 0

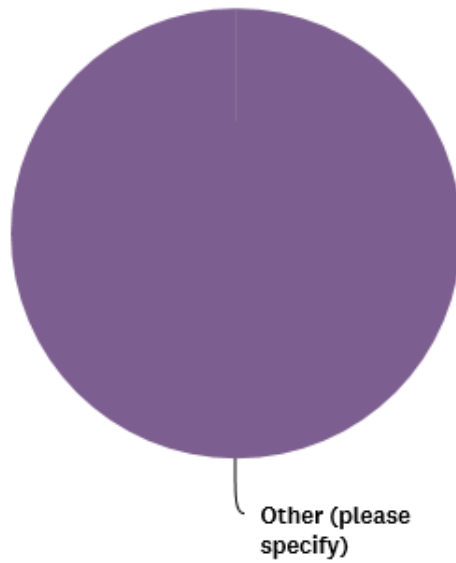


ANSWER CHOICES	RESPONSES	
Very safe	100.00%	2
Safe	0.00%	0
Unsafe	0.00%	0
TOTAL		2



Please identify your primary concern regarding CRIMINAL activity on campus:

Answered: 1 Skipped: 1

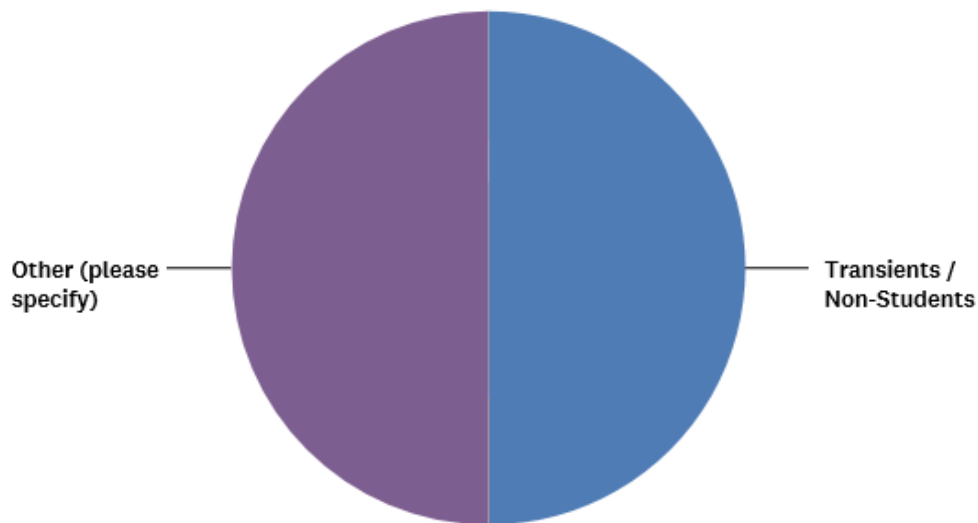


ANSWER CHOICES	RESPONSES	
Thefts	0.00%	0
Gangs	0.00%	0
Vandalism	0.00%	0
Narcotics	0.00%	0
Violent Crimes	0.00%	0
Other (please specify)	100.00%	1
TOTAL		1



Please identify your primary concern regarding NUISANCE activity on campus:

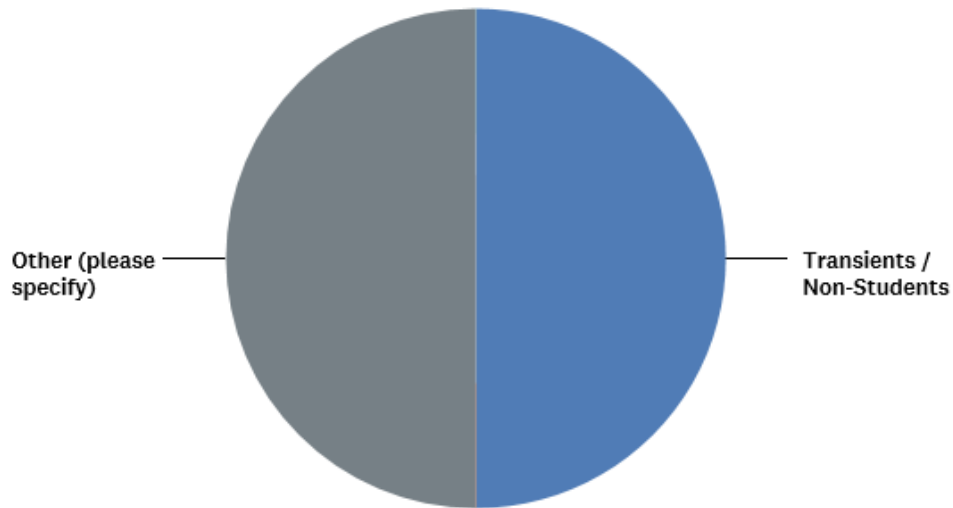
Answered: 2 Skipped: 0



ANSWER CHOICES	RESPONSES	
Classroom Disruptions	0.00%	0
Transients / Non-Students	50.00%	1
Narcotics	0.00%	0
Smoking	0.00%	0
Gangs	0.00%	0
Other (please specify)	50.00%	1
TOTAL		2

What problem would you want solved FIRST on campus?

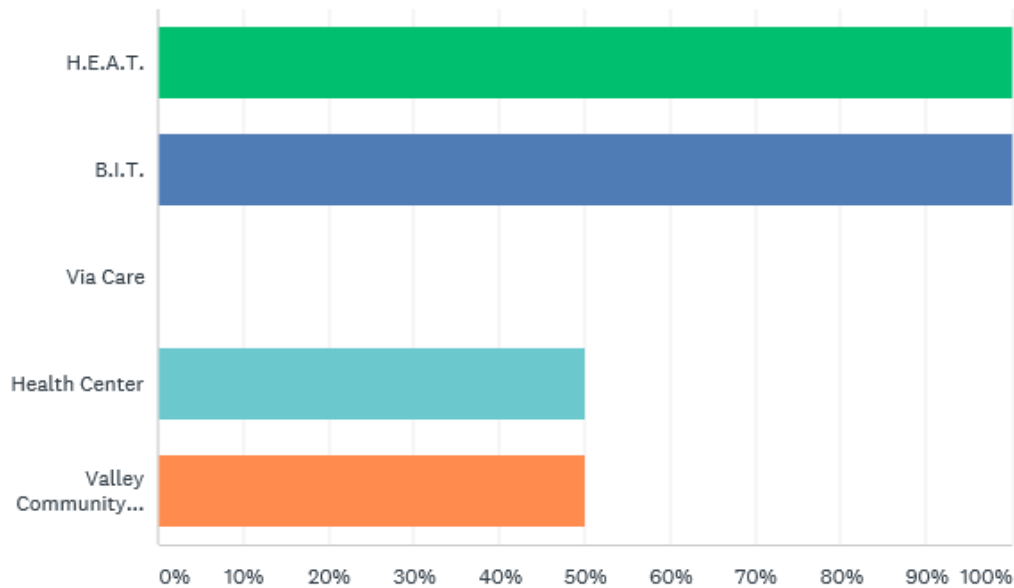
Answered: 2 Skipped: 0



ANSWER CHOICES	RESPONSES	
Traffic	0.00%	0
Transients / Non-Students	50.00%	1
Narcotics	0.00%	0
Vandalism	0.00%	0
Thefts	0.00%	0
Gangs	0.00%	0
Violent Crimes	0.00%	0
Classroom Disruptions	0.00%	0
Smoking	0.00%	0
Other (please specify)	50.00%	1
TOTAL		2

Which of the following Mental Health / Counseling Services are you aware of?

Answered: 2 Skipped: 0

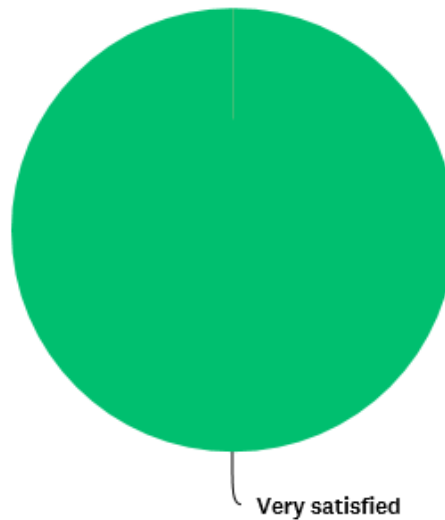


ANSWER CHOICES	RESPONSES
H.E.A.T.	100.00% 2
B.I.T.	100.00% 2
Via Care	0.00% 0
Health Center	50.00% 1
Valley Community Healthcare	50.00% 1
Total Respondents: 2	



How satisfied are you with the service provided by the LASD Community College Bureau?

Answered: 1 Skipped: 1



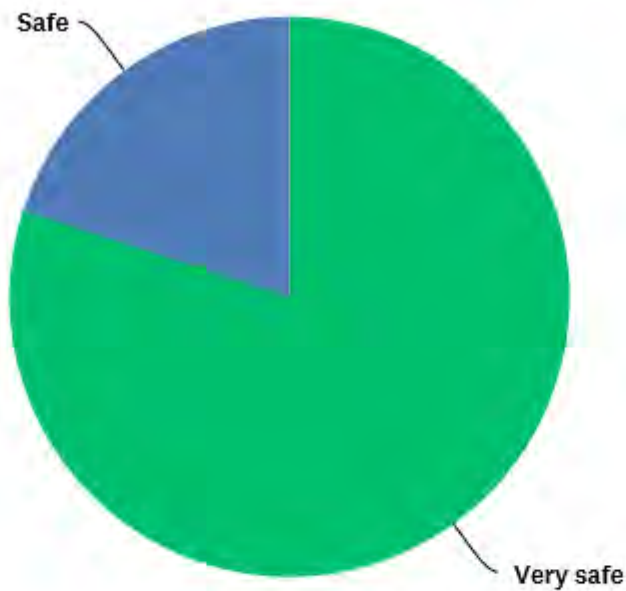
ANSWER CHOICES	RESPONSES	
Very satisfied	100.00%	1
Satisfied	0.00%	0
Dissatisfied	0.00%	0
TOTAL		1



WEST L.A. COLLEGE

How safe do you feel on campus?

Answered: 5 Skipped: 0

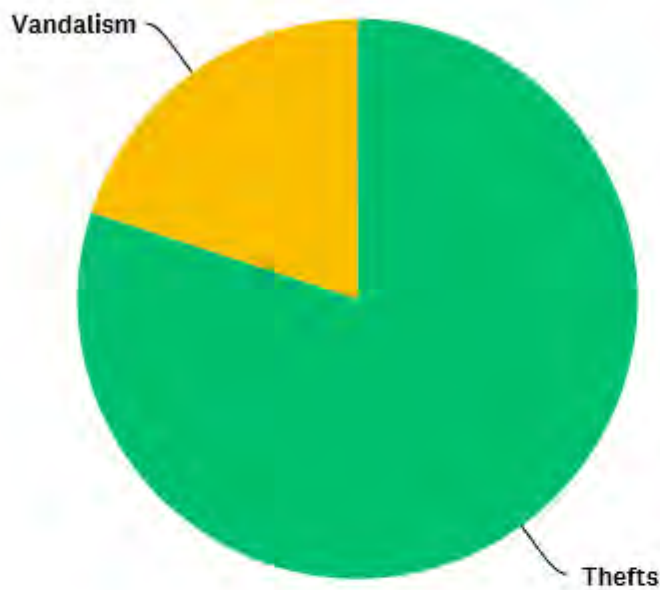


ANSWER CHOICES	RESPONSES	
Very safe	80.00%	4
Safe	20.00%	1
Unsafe	0.00%	0
TOTAL		5



Please identify your primary concern regarding CRIMINAL activity on campus:

Answered: 5 Skipped: 0

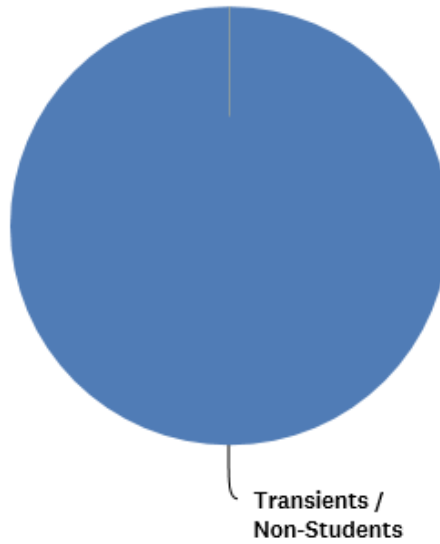


ANSWER CHOICES	RESPONSES	
Thefts	80.00%	4
Gangs	0.00%	0
Vandalism	20.00%	1
Narcotics	0.00%	0
Violent Crimes	0.00%	0
Other (please specify)	0.00%	0
TOTAL		5



Please identify your primary concern regarding NUISANCE activity on campus:

Answered: 5 Skipped: 0

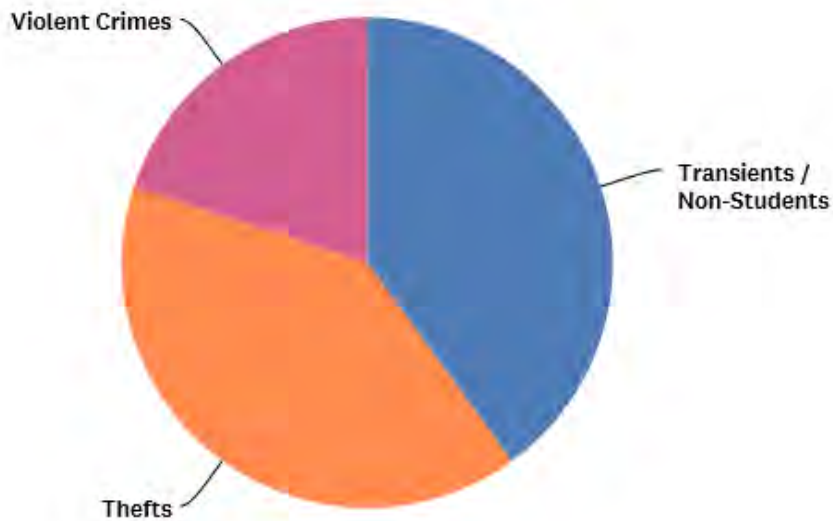


ANSWER CHOICES	RESPONSES	
Classroom Disruptions	0.00%	0
Transients / Non-Students	100.00%	5
Narcotics	0.00%	0
Smoking	0.00%	0
Gangs	0.00%	0
TOTAL		5



What problem would you want solved FIRST on campus?

Answered: 5 Skipped: 0

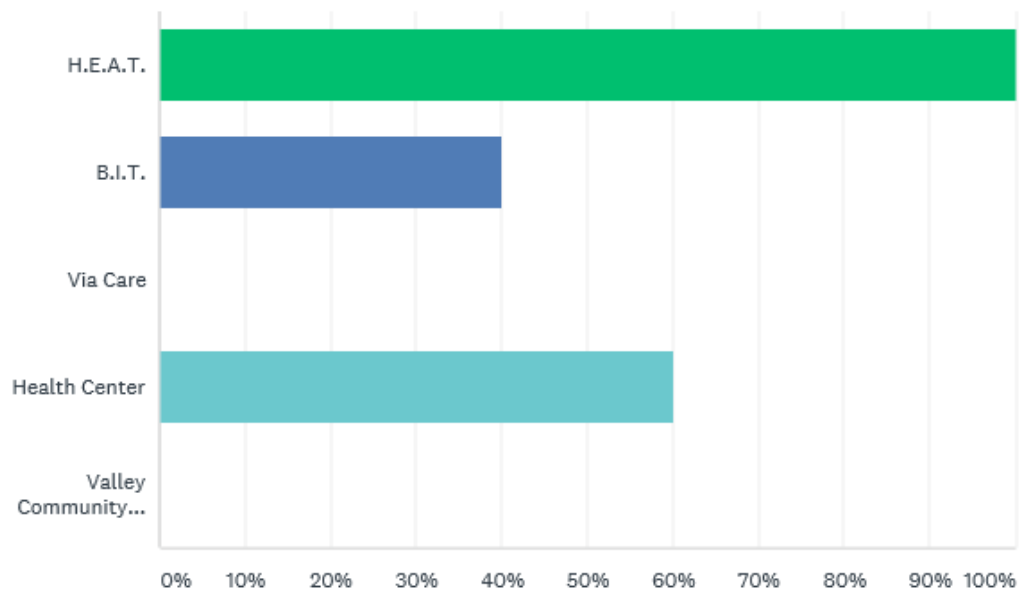


ANSWER CHOICES	RESPONSES	
Traffic	0.00%	0
Transients / Non-Students	40.00%	2
Narcotics	0.00%	0
Vandalism	0.00%	0
Thefts	40.00%	2
Gangs	0.00%	0
Violent Crimes	20.00%	1
Classroom Disruptions	0.00%	0
Smoking	0.00%	0
Other (please specify)	0.00%	0
TOTAL		5



Which of the following Mental Health / Counseling Services are you aware of?

Answered: 5 Skipped: 0

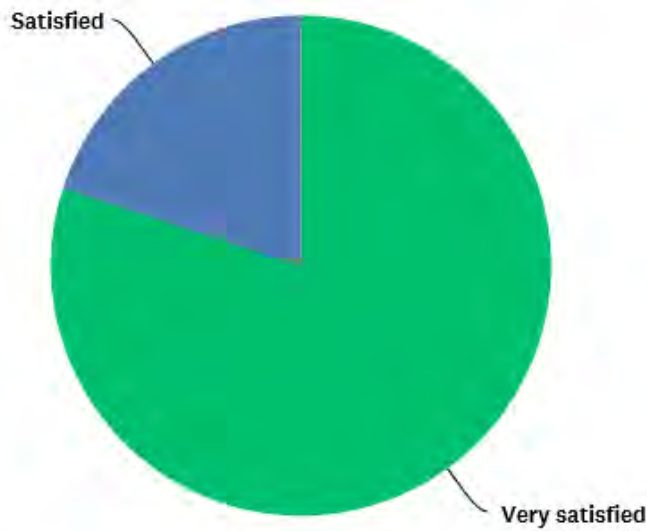


ANSWER CHOICES	RESPONSES	
H.E.A.T.	100.00%	5
B.I.T.	40.00%	2
Via Care	0.00%	0
Health Center	60.00%	3
Valley Community Healthcare	0.00%	0
Total Respondents: 5		



How satisfied are you with the service provided by the LASD Community College Bureau?

Answered: 5 Skipped: 0



ANSWER CHOICES	RESPONSES	
Very satisfied	80.00%	4
Satisfied	20.00%	1
Dissatisfied	0.00%	0
TOTAL		5



Attachment I

Detailed Crime Statistics by Campus

Los Angeles City College

PART I CRIMES	2016	2017	2018	2019	2020	5-yr % Change	1-yr % Change
Homicide	0	0	0	0	0	N/C	N/C
Rape	0	0	0	2	0	N/C	-100%
Robbery	2	0	0	1	0	-100%	-100%
Aggravated Assault	1	5	1	1	1	0%	0%
Burglary	4	7	9	14	10	150%	-29%
Locker Burglary	0	2	0	0	0	N/C	N/C
Vehicle Burglary	6	4	2	1	1	-83%	0%
Grand Theft	12	11	7	8	0	-100%	-100%
Petty Theft	56	22	44	18	3	-95%	-83%
Total Larceny Theft	74	39	53	27	4	-95%	-85%
Grand Theft Auto	3	0	1	1	2	-33%	100%
Arson	0	2	0	2	0	N/C	-100%
Part I Totals	84	53	64	48	17	-80%	-65%
PART II CRIMES							
Forgery	1	0	0	0	0	-100%	N/C
Fraud and NSF Checks	1	1	0	0	0	-100%	N/C
Sex Offenses, Felonies	0	0	1	0	0	N/C	N/C
Sex Offenses, Misdemeanors	2	1	5	2	0	-100%	-100%
Non-Aggravated Assaults	2	3	9	2	1	-50%	-50%
Weapon Laws	2	1	0	1	2	0%	100%
Offenses Against Families	0	0	0	0	0	N/C	N/C
Narcotics	4	3	1	3	0	-100%	-100%
Liquor Laws	1	1	0	0	0	-100%	N/C
Drunk - Alcohol/Drugs	0	1	0	0	0	N/C	N/C
Disorderly Conduct	0	0	1	0	0	N/C	N/C
Vagrancy	0	0	0	0	0	N/C	N/C
Gambling	0	0	0	0	0	N/C	N/C
Drunk Driving Vehicle/Boat	0	0	1	0	0	N/C	N/C
Vehicle / Boat Laws	5	5	0	1	0	-100%	-100%
Vandalism	15	17	17	17	8	-47%	-53%
Warrant	0	0	0	0	0	N/C	N/C
Receiving Stolen Property	0	0	0	0	0	N/C	N/C
Federal Offenses w/o Money	0	0	0	0	0	N/C	N/C
Federal Offenses with Money	0	0	0	0	0	N/C	N/C
Felonies, Miscellaneous	1	2	1	1	2	100%	100%
Misdemeanor, Miscellaneous	3	2	0	1	2	-33%	100%
Part II Totals	37	37	36	28	15	-59%	-46%
GRAND TOTAL	121	90	100	76	32	-74%	-58%

East Los Angeles College

PART I CRIMES	2016	2017	2018	2019	2020	5-yr % Change	1-yr % Change
Homicide	0	0	0	0	0	N/C	N/C
Rape	0	0	0	1	0	N/C	-100%
Robbery	1	1	0	2	1	0%	-50%
Aggravated Assault	2	1	1	0	0	-100%	N/C
Burglary	4	0	7	5	10	150%	100%
Locker Burglary	1	2	0	1	0	-100%	-100%
Vehicle Burglary	19	6	10	3	1	-95%	-67%
Grand Theft	6	3	4	5	4	-33%	-20%
Petty Theft	42	48	24	20	8	-81%	-60%
Total Larceny Theft	68	59	38	29	13	-81%	-55%
Grand Theft Auto	8	7	7	7	8	0%	14%
Arson	0	1	1	3	0	N/C	-100%
Part I Totals	83	69	54	47	32	-61%	-32%
PART II CRIMES							
Forgery	0	0	0	1	1	N/C	0%
Fraud and NSF Checks	0	0	2	1	1	N/C	0%
Sex Offenses, Felonies	0	0	0	0	0	N/C	N/C
Sex Offenses, Misdemeanors	3	6	8	0	0	-100%	N/C
Non-Aggravated Assaults	11	2	8	5	1	-91%	-80%
Weapon Laws	3	0	2	0	0	-100%	N/C
Offenses Against Families	0	0	0	0	0	N/C	N/C
Narcotics	3	0	0	0	0	-100%	N/C
Liquor Laws	0	0	0	0	0	N/C	N/C
Drunk - Alcohol/Drugs	0	0	1	0	0	N/C	N/C
Disorderly Conduct	0	0	0	0	0	N/C	N/C
Vagrancy	0	0	0	0	0	N/C	N/C
Gambling	0	0	0	0	0	N/C	N/C
Drunk Driving Vehicle/Boat	0	0	0	0	0	N/C	N/C
Vehicle / Boat Laws	26	29	35	16	5	-81%	-69%
Vandalism	20	12	8	6	6	-70%	0%
Warrant	0	0	0	0	0	N/C	N/C
Receiving Stolen Property	0	1	1	0	0	N/C	N/C
Federal Offenses w/o Money	0	1	0	0	0	N/C	N/C
Federal Offenses with Money	1	0	0	0	0	-100%	N/C
Felonies, Miscellaneous	3	0	1	1	1	-67%	0%
Misdemeanor, Miscellaneous	4	2	3	3	2	-50%	-33%
Part II Totals	74	53	69	33	17	-77%	-48%
GRAND TOTAL	157	122	123	80	49	-69%	-39%

Los Angeles Harbor College

PART I CRIMES	2016	2017	2018	2019	2020	5-yr % Change	1-yr % Change
Homicide	0	0	0	0	0	N/C	N/C
Rape	2	1	0	0	0	-100%	N/C
Robbery	0	0	0	1	0	N/C	-100%
Aggravated Assault	2	1	2	0	0	-100%	N/C
Burglary	3	6	2	5	8	167%	60%
Locker Burglary	0	0	0	0	0	N/C	N/C
Vehicle Burglary	5	3	0	1	2	-60%	100%
Grand Theft	0	3	2	2	1	N/C	-50%
Petty Theft	1	2	7	4	3	200%	-25%
Total Larceny Theft	6	8	9	7	6	0%	-14%
Grand Theft Auto	1	1	2	1	0	-100%	-100%
Arson	0	1	0	0	1	N/C	N/C
Part I Totals	14	18	15	14	15	7%	7%
PART II CRIMES							
Forgery	0	1	0	0	0	N/C	N/C
Fraud and NSF Checks	0	0	0	0	0	N/C	N/C
Sex Offenses, Felonies	0	0	0	0	0	N/C	N/C
Sex Offenses, Misdemeanors	1	1	1	2	0	-100%	-100%
Non-Aggravated Assaults	3	3	0	3	1	-67%	-67%
Weapon Laws	3	0	1	0	0	-100%	N/C
Offenses Against Families	0	0	0	0	0	N/C	N/C
Narcotics	0	0	1	0	0	N/C	N/C
Liquor Laws	0	0	0	0	0	N/C	N/C
Drunk - Alcohol/Drugs	0	0	0	1	0	N/C	-100%
Disorderly Conduct	0	0	1	0	0	N/C	N/C
Vagrancy	0	0	0	0	0	N/C	N/C
Gambling	0	0	0	0	0	N/C	N/C
Drunk Driving Vehicle/Boat	0	0	0	0	0	N/C	N/C
Vehicle / Boat Laws	3	4	2	2	0	-100%	-100%
Vandalism	1	8	1	2	1	0%	-50%
Warrant	0	0	0	0	0	N/C	N/C
Receiving Stolen Property	0	0	0	0	0	N/C	N/C
Federal Offenses w/o Money	0	0	0	0	0	N/C	N/C
Federal Offenses with Money	2	1	2	4	0	-100%	-100%
Felonies, Miscellaneous	3	1	1	0	0	-100%	N/C
Misdemeanor, Miscellaneous	2	1	2	0	0	-100%	N/C
Part II Totals	18	20	12	14	2	-89%	-86%
GRAND TOTAL	32	38	27	28	17	-47%	-39%

Los Angeles Mission College

PART I CRIMES	2016	2017	2018	2019	2020	5-yr % Change	1-yr % Change
Homicide	0	0	0	0	0	N/C	N/C
Rape	0	0	0	0	0	N/C	N/C
Robbery	0	0	0	0	0	N/C	N/C
Aggravated Assault	0	0	0	0	0	N/C	N/C
Burglary	1	0	1	0	2	100%	N/C
Locker Burglary	2	2	0	3	0	-100%	-100%
Vehicle Burglary	0	0	0	0	1	N/C	N/C
Grand Theft	0	0	1	1	1	N/C	0%
Petty Theft	4	6	3	2	2	-50%	0%
Total Larceny Theft	6	8	4	6	4	-33%	-33%
Grand Theft Auto	0	0	0	0	1	N/C	N/C
Arson	0	0	0	1	0	N/C	-100%
Part I Totals	7	8	5	7	7	0%	0%
PART II CRIMES							
Forgery	0	0	0	0	0	N/C	N/C
Fraud and NSF Checks	0	0	0	0	0	N/C	N/C
Sex Offenses, Felonies	0	0	0	0	0	N/C	N/C
Sex Offenses, Misdemeanors	2	1	0	0	1	-50%	N/C
Non-Aggravated Assaults	2	0	0	0	1	-50%	N/C
Weapon Laws	0	0	0	0	0	N/C	N/C
Offenses Against Families	0	0	0	0	0	N/C	N/C
Narcotics	0	0	0	0	0	N/C	N/C
Liquor Laws	0	0	0	0	0	N/C	N/C
Drunk - Alcohol/Drugs	0	0	0	0	0	N/C	N/C
Disorderly Conduct	0	0	0	0	1	N/C	N/C
Vagrancy	0	0	0	0	0	N/C	N/C
Gambling	0	0	0	0	0	N/C	N/C
Drunk Driving Vehicle/Boat	0	0	0	0	0	N/C	N/C
Vehicle / Boat Laws	3	5	2	1	0	-100%	-100%
Vandalism	1	7	4	2	3	200%	50%
Warrant	0	0	0	0	0	N/C	N/C
Receiving Stolen Property	0	0	0	0	0	N/C	N/C
Federal Offenses w/o Money	0	0	0	0	0	N/C	N/C
Federal Offenses with Money	0	0	0	0	0	N/C	N/C
Felonies, Miscellaneous	0	0	0	1	0	N/C	-100%
Misdemeanor, Miscellaneous	0	0	0	0	0	N/C	N/C
Part II Totals	8	13	6	4	6	-25%	50%
GRAND TOTAL	15	21	11	11	13	-13%	18%

Los Angeles Pierce College

PART I CRIMES	2016	2017	2018	2019	2020	5-yr % Change	1-yr % Change
Homicide	0	0	0	0	0	N/C	N/C
Rape	0	0	0	1	0	N/C	-100%
Robbery	1	1	0	0	0	-100%	N/C
Aggravated Assault	3	0	0	0	0	-100%	N/C
Burglary	3	6	5	1	3	0%	200%
Locker Burglary	8	1	0	1	0	-100%	-100%
Vehicle Burglary	2	1	1	0	0	-100%	N/C
Grand Theft	3	5	1	1	0	-100%	-100%
Petty Theft	19	22	22	12	3	-84%	-75%
Total Larceny Theft	32	29	24	14	3	-91%	-79%
Grand Theft Auto	2	3	0	0	0	-100%	N/C
Arson	0	0	0	0	0	N/C	N/C
Part I Totals	41	39	29	16	6	-85%	-63%
PART II CRIMES							
Forgery	0	0	0	0	0	N/C	N/C
Fraud and NSF Checks	0	0	1	2	0	N/C	-100%
Sex Offenses, Felonies	0	0	0	0	0	N/C	N/C
Sex Offenses, Misdemeanors	0	1	1	2	0	N/C	-100%
Non-Aggravated Assaults	6	5	5	2	2	-67%	0%
Weapon Laws	0	0	0	0	0	N/C	N/C
Offenses Against Families	0	0	0	0	0	N/C	N/C
Narcotics	2	1	0	0	0	-100%	N/C
Liquor Laws	0	0	0	0	0	N/C	N/C
Drunk - Alcohol/Drugs	2	0	0	1	0	-100%	-100%
Disorderly Conduct	1	0	0	2	0	-100%	-100%
Vagrancy	0	0	0	0	0	N/C	N/C
Gambling	0	0	0	0	0	N/C	N/C
Drunk Driving Vehicle/Boat	0	0	0	0	0	N/C	N/C
Vehicle / Boat Laws	10	12	16	2	0	-100%	-100%
Vandalism	2	10	13	6	10	400%	67%
Warrant	0	0	0	0	0	N/C	N/C
Receiving Stolen Property	0	0	0	0	0	N/C	N/C
Federal Offenses w/o Money	0	0	0	0	0	N/C	N/C
Federal Offenses with Money	0	0	0	0	0	N/C	N/C
Felonies, Miscellaneous	1	0	1	3	1	0%	-67%
Misdemeanor, Miscellaneous	0	1	4	0	1	N/C	N/C
Part II Totals	24	30	41	20	14	-42%	-30%
GRAND TOTAL	65	69	70	36	20	-69%	-44%



Los Angeles Southwest College

PART I CRIMES	2016	2017	2018	2019	2020	5-yr % Change	1-yr % Change
Homicide	0	0	0	0	0	N/C	N/C
Rape	0	0	0	1	0	N/C	-100%
Robbery	0	0	1	1	0	N/C	-100%
Aggravated Assault	2	0	1	0	0	-100%	N/C
Burglary	0	0	1	1	1	N/C	0%
Locker Burglary	0	0	0	4	0	N/C	-100%
Vehicle Burglary	3	3	1	1	0	-100%	-100%
Grand Theft	0	0	1	2	2	N/C	0%
Petty Theft	17	14	8	9	2	-88%	-78%
Total Larceny Theft	20	17	10	16	4	-80%	-75%
Grand Theft Auto	0	1	0	2	0	N/C	-100%
Arson	0	0	1	0	0	N/C	N/C
Part I Totals	22	18	14	21	5	-77%	-76%
PART II CRIMES							
Forgery	0	0	0	0	0	N/C	N/C
Fraud and NSF Checks	0	0	0	0	0	N/C	N/C
Sex Offenses, Felonies	0	1	1	1	0	N/C	-100%
Sex Offenses, Misdemeanors	1	3	4	1	0	-100%	-100%
Non-Aggravated Assaults	9	4	5	11	0	-100%	-100%
Weapon Laws	0	0	0	0	0	N/C	N/C
Offenses Against Families	0	0	0	0	0	N/C	N/C
Narcotics	0	0	0	0	0	N/C	N/C
Liquor Laws	0	0	0	0	0	N/C	N/C
Drunk - Alcohol/Drugs	0	0	0	0	0	N/C	N/C
Disorderly Conduct	2	1	1	1	0	-100%	-100%
Vagrancy	0	0	0	0	0	N/C	N/C
Gambling	0	0	0	0	0	N/C	N/C
Drunk Driving Vehicle/Boat	0	0	0	0	0	N/C	N/C
Vehicle / Boat Laws	0	2	2	2	1	N/C	-50%
Vandalism	3	3	2	6	1	-67%	-83%
Warrant	0	0	0	0	0	N/C	N/C
Receiving Stolen Property	0	0	0	0	0	N/C	N/C
Federal Offenses w/o Money	0	0	0	0	0	N/C	N/C
Federal Offenses with Money	0	0	0	0	0	N/C	N/C
Felonies, Miscellaneous	2	2	0	3	0	-100%	-100%
Misdemeanor, Miscellaneous	0	1	0	0	0	N/C	N/C
Part II Totals	17	17	15	25	2	-88%	-92%
GRAND TOTAL	39	35	29	46	7	-82%	-85%

Los Angeles Trade Technical College

PART I CRIMES	2016	2017	2018	2019	2020	5-yr % Change	1-yr % Change
Homicide	0	0	0	0	0	N/C	N/C
Rape	0	0	0	0	0	N/C	N/C
Robbery	0	1	0	1	0	N/C	-100%
Aggravated Assault	3	1	4	1	0	-100%	-100%
Burglary	3	5	9	14	4	33%	-71%
Locker Burglary	5	2	6	8	0	-100%	-100%
Vehicle Burglary	7	5	9	5	1	-86%	-80%
Grand Theft	9	14	12	8	4	-56%	-50%
Petty Theft	66	65	50	46	7	-89%	-85%
Total Larceny Theft	87	86	77	67	12	-86%	-82%
Grand Theft Auto	2	2	5	2	0	-100%	-100%
Arson	0	2	0	0	0	N/C	N/C
Part I Totals	95	97	95	85	16	-83%	-81%
PART II CRIMES							
Forgery	0	0	0	0	0	N/C	N/C
Fraud and NSF Checks	1	0	0	0	0	-100%	N/C
Sex Offenses, Felonies	1	1	0	0	0	-100%	N/C
Sex Offenses, Misdemeanors	3	2	2	6	0	-100%	-100%
Non-Aggravated Assaults	5	6	5	5	2	-60%	-60%
Weapon Laws	1	0	1	1	0	-100%	-100%
Offenses Against Families	1	0	0	0	0	-100%	N/C
Narcotics	17	1	3	2	0	-100%	-100%
Liquor Laws	1	0	0	0	0	-100%	N/C
Drunk - Alcohol/Drugs	0	1	0	0	0	N/C	N/C
Disorderly Conduct	1	0	0	0	0	-100%	N/C
Vagrancy	0	0	0	0	0	N/C	N/C
Gambling	0	0	0	0	0	N/C	N/C
Drunk Driving Vehicle/Boat	0	0	0	0	0	N/C	N/C
Vehicle / Boat Laws	5	3	1	3	1	-80%	-67%
Vandalism	28	24	19	11	8	-71%	-27%
Warrant	0	0	0	0	0	N/C	N/C
Receiving Stolen Property	0	1	0	0	0	N/C	N/C
Federal Offenses w/o Money	0	0	0	0	0	N/C	N/C
Federal Offenses with Money	1	0	0	0	0	-100%	N/C
Felonies, Miscellaneous	3	0	1	1	0	-100%	-100%
Misdemeanor, Miscellaneous	1	0	0	9	3	200%	-67%
Part II Totals	69	39	32	38	14	-80%	-63%
GRAND TOTAL	164	136	127	123	30	-82%	-76%

Los Angeles Valley College

PART I CRIMES	2016	2017	2018	2019	2020	5-yr % Change	1-yr % Change
Homicide	0	0	0	0	0	N/C	N/C
Rape	0	0	0	0	0	N/C	N/C
Robbery	1	1	3	0	0	-100%	N/C
Aggravated Assault	2	1	2	0	0	-100%	N/C
Burglary	10	4	4	3	7	-30%	133%
Locker Burglary	0	0	0	0	0	N/C	N/C
Vehicle Burglary	7	3	0	0	2	-71%	N/C
Grand Theft	2	5	1	2	2	0%	0%
Petty Theft	22	16	12	5	2	-91%	-60%
Total Larceny Theft	31	24	13	7	6	-81%	-14%
Grand Theft Auto	1	2	1	2	2	100%	0%
Arson	0	1	0	0	0	N/C	N/C
Part I Totals	45	33	23	12	15	-67%	25%
PART II CRIMES							
Forgery	0	0	0	0	0	N/C	N/C
Fraud and NSF Checks	0	1	0	0	3	N/C	N/C
Sex Offenses, Felonies	0	0	0	0	1	N/C	N/C
Sex Offenses, Misdemeanors	2	0	2	2	0	-100%	-100%
Non-Aggravated Assaults	2	5	2	1	0	-100%	-100%
Weapon Laws	2	0	1	0	0	-100%	N/C
Offenses Against Families	0	0	0	0	0	N/C	N/C
Narcotics	1	3	1	0	1	0%	N/C
Liquor Laws	0	0	0	0	0	N/C	N/C
Drunk - Alcohol/Drugs	0	0	0	0	0	N/C	N/C
Disorderly Conduct	3	2	0	0	0	-100%	N/C
Vagrancy	0	0	0	0	0	N/C	N/C
Gambling	0	0	0	0	0	N/C	N/C
Drunk Driving Vehicle/Boat	0	0	0	0	0	N/C	N/C
Vehicle / Boat Laws	9	18	16	6	5	-44%	-17%
Vandalism	5	13	0	21	16	220%	-24%
Warrant	0	0	0	0	0	N/C	N/C
Receiving Stolen Property	0	1	0	0	0	N/C	N/C
Federal Offenses w/o Money	0	0	0	0	0	N/C	N/C
Federal Offenses with Money	0	0	0	0	0	N/C	N/C
Felonies, Miscellaneous	0	4	0	0	0	N/C	N/C
Misdemeanor, Miscellaneous	1	2	1	1	0	-100%	-100%
Part II Totals	25	49	23	31	26	4%	-16%
GRAND TOTAL	70	82	46	43	41	-41%	-5%

West Los Angeles College

PART I CRIMES	2016	2017	2018	2019	2020	5-yr % Change	1-yr % Change
Homicide	0	0	0	0	0	N/C	N/C
Rape	0	0	0	0	0	N/C	N/C
Robbery	0	0	0	0	0	N/C	N/C
Aggravated Assault	1	0	2	0	0	-100%	N/C
Burglary	3	1	1	0	0	-100%	N/C
Locker Burglary	0	1	1	0	0	N/C	N/C
Vehicle Burglary	0	2	1	0	0	N/C	N/C
Grand Theft	2	2	1	0	0	-100%	N/C
Petty Theft	23	6	0	7	1	-96%	-86%
Total Larceny Theft	25	11	3	7	1	-96%	-86%
Grand Theft Auto	0	1	1	0	0	N/C	N/C
Arson	0	0	0	0	1	N/C	N/C
Part I Totals	29	13	7	7	2	-93%	-71%
PART II CRIMES							
Forgery	1	1	0	0	0	-100%	N/C
Fraud and NSF Checks	0	1	0	1	0	N/C	-100%
Sex Offenses, Felonies	0	0	0	1	0	N/C	-100%
Sex Offenses, Misdemeanors	2	0	1	0	0	-100%	N/C
Non-Aggravated Assaults	5	8	2	5	0	-100%	-100%
Weapon Laws	0	0	0	0	0	N/C	N/C
Offenses Against Families	2	0	0	0	0	-100%	N/C
Narcotics	1	2	0	1	0	-100%	-100%
Liquor Laws	0	0	0	0	0	N/C	N/C
Drunk - Alcohol/Drugs	0	2	0	0	0	N/C	N/C
Disorderly Conduct	0	0	0	0	0	N/C	N/C
Vagrancy	0	0	0	0	0	N/C	N/C
Gambling	0	0	0	0	0	N/C	N/C
Drunk Driving Vehicle/Boat	0	0	0	0	0	N/C	N/C
Vehicle / Boat Laws	1	2	1	1	0	-100%	-100%
Vandalism	1	4	3	5	1	0%	-80%
Warrant	0	0	0	0	0	N/C	N/C
Receiving Stolen Property	0	1	0	0	0	N/C	N/C
Federal Offenses w/o Money	0	0	0	0	0	N/C	N/C
Federal Offenses with Money	0	0	0	0	0	N/C	N/C
Felonies, Miscellaneous	1	0	1	0	0	-100%	N/C
Misdemeanor, Miscellaneous	0	1	0	1	0	N/C	-100%
Part II Totals	14	22	8	15	1	-93%	-93%
GRAND TOTAL	43	35	15	22	3	-93%	-86%

District – All Colleges

PART I CRIMES	2016	2017	2018	2019	2020	5-yr % Change	1-yr % Change
Homicide	0	0	0	0	0	N/C	N/C
Rape	2	1	0	5	0	-100%	-100%
Robbery	5	4	4	6	1	-80%	-83%
Aggravated Assault	16	9	13	2	1	-94%	-50%
Burglary	31	29	39	43	45	45%	5%
Locker Burglary	16	10	7	17	0	-100%	-100%
Vehicle Burglary	49	27	24	11	8	-84%	-27%
Grand Theft	34	43	30	29	14	-59%	-52%
Petty Theft	250	201	170	123	31	-88%	-75%
Total Larceny Theft	349	281	231	180	53	-85%	-71%
Grand Theft Auto	17	17	17	15	13	-24%	-13%
Arson	0	7	2	6	2	N/C	-67%
Part I Totals	420	348	306	257	115	-73%	-55%
PART II CRIMES							
Forgery	2	2	0	1	1	-50%	0%
Fraud and NSF Checks	2	3	3	4	4	100%	0%
Sex Offenses, Felonies	1	2	2	2	1	0%	-50%
Sex Offenses, Misdemeanors	16	15	24	15	1	-94%	-93%
Non-Aggravated Assaults	45	36	36	34	8	-82%	-76%
Weapon Laws	11	1	5	2	2	-82%	0%
Offenses Against Families	3	0	0	0	0	-100%	N/C
Narcotics	28	10	6	6	1	-96%	-83%
Liquor Laws	2	1	0	0	0	-100%	N/C
Drunk - Alcohol/Drugs	2	4	1	2	0	-100%	-100%
Disorderly Conduct	7	3	3	3	1	-86%	-67%
Vagrancy	0	0	0	0	0	N/C	N/C
Gambling	0	0	0	0	0	N/C	N/C
Drunk Driving Vehicle/Boat	0	0	1	0	0	N/C	N/C
Vehicle / Boat Laws	62	80	75	34	12	-81%	-65%
Vandalism	76	98	67	76	54	-29%	-29%
Warrant	0	0	0	0	0	N/C	N/C
Receiving Stolen Property	0	4	1	0	0	N/C	N/C
Federal Offenses w/o Money	0	1	0	0	0	N/C	N/C
Federal Offenses with Money	4	1	2	4	0	-100%	-100%
Felonies, Miscellaneous	14	9	6	10	4	-71%	-60%
Misdemeanor, Miscellaneous	11	10	10	15	8	-27%	-47%
Part II Totals	286	280	242	208	97	-66%	-53%
GRAND TOTAL	706	628	548	465	212	-70%	-54%

Note: Larceny Theft*** represents the sum of the counts for Locker Burglary, Vehicle Burglary, Grand Theft & Petty Theft.

performance REPORT

