



CUSTODY DIVISION POPULATION YEAR END REVIEW

2020

Los Angeles County Sheriff's Department

Alex Villanueva, Sheriff

TABLE OF CONTENTS

Executive Summary.....	3
1. Population Trends.....	5
LA County Inmate Population Graph	
Monthly ADIP Trend	
Arrests, Bookings and Releases	
Release Practices	
Homeless and Veteran	
2. Facilities Overview.....	11
Rated Capacities - Board of State and Community Corrections	
Jail Housing Facilities	
Men's Central Jail	
Twin Towers Correctional Facility	
Century Regional Detention Center	
Pitchess Detention Center – East	
Pitchess Detention Center – North	
Pitchess Detention Center – South	
North County Correctional Facility	
3. Population Overview.....	18
Inmate Population Demographics	
Inmate Population Offender Age Groups	
Jail Population by Security Level	
Inmate Population Breakdown	
Crime Classification Statistics	
Inmates with M7	
No Cases Adjudicated	
No Cases Adjudicated Misdemeanor Population	
Mental Health Inmate Population	
Misdemeanor Incompetent to Stand Trial (MIST)	
Americans with Disabilities Act (ADA)	
Medical Housing	
4. In-Custody Programs.....	31
Credit Earnings	
Conservation Work Program (CWP)	
Education Based Incarceration Program (EBI-Milestones)	
Fire Camp Training Program	
CDCR Fire Camp Program	
Back on Track (BOT)	
In-Custody S.T.A.R.T Program	

5. Alternatives to Custody Programs.....	35
Community Transition Unit (CTU)	
Substance Abuse Treatment and Reentry Transition (S.T.A.R.T)	
Female Programs	
Veteran’s Administration (VA)	
Transitional Case Management Program (TCM)	
Tarzana Treatment Center DMH/SUD Program	
Mental Health Diversion – Normandie Village/Gateway	
Community Based Alternatives to Custody (CBAC)	
LA County ATC Inmate Population Graph	
6. Re-Entry Assistance.....	40
Community Re-Entry and Resource Center (CRRC)	
CTU Coordinated Releases to Various Programs	
CTU Vital Records	

EXECUTIVE SUMMARY

2020 YEAR END

The average daily inmate population (ADIP) of the Los Angeles County (County) jail system in 2020 was 14,212. This is a 17 percent decrease from the 2019 ADIP of 17,070.

In 2020, there were a total of 220,012 arrests versus 303,363 arrests in 2019, and of those arrests 56,651 were booked into the jail system this year versus 103,839 last year. The inmate population was comprised primarily of men, 89 percent. The largest group in the overall population breakdown by age was the 18-34 group at 57 percent. Detailed demographic data can be found on pages 19 and 20 of this report.

Approximately 44 percent of the inmate population was comprised of sentence status 1 inmates with no cases adjudicated. The average of this population had decreased by approximately 17 percent from 7,541 in 2019 to 6,258 in 2020.

The sentenced population was split between inmates traditionally sentenced to County jail time (approximately 6 percent) and those sentenced to County jail under AB109 (approximately 10 percent).

This year, the number of inmates sentenced to state prison has drastically increased since the governor's executive order which temporarily suspended intake to the California Department of Corrections and Rehabilitation (CDCR). In 2020, an average of 1,600 sentenced inmates (approximately 11 percent of the population) were awaiting transfers to state prison versus last year's 789 inmates (approximately 5 percent).

The Los Angeles County Sheriff's Department (Department) continued to compile reports on the number of inmates who identified themselves as being homeless and/or a veteran of the United States military. On average there were 3,621 individuals (25 percent) in custody who reported they were homeless, and 276 (2 percent) who identified themselves as a veteran. For further information regarding these populations see page 10 of this report.

Despite the decline in the number of inmates who required mental health treatment in 2020, the percentage of mentally ill population continued to rise.

EXECUTIVE SUMMARY CONTINUED

2020 YEAR END

In 2020, an average of 5,416 inmates were receiving some level of mental health treatment, which accounted for 38 percent of the total inmate population. In comparison, during 2019, there was an average of 5,676 inmates receiving mental health treatment, which accounted for 33 percent of the total inmate population. Even though there were 260 less mentally ill inmates compared to last year, the percentage is 5 percent higher due to significantly lower ADIP. The greatest increase was seen in the general population inmates using psychotropic medication from an average of 1,497 in 2019, to 1,825 in 2020, signifying a 22 percent increase. Some of the high observation inmates that were too ill to be safely housed in a multi-person cell and were housed alone. This made the second bed in these multi-person cells unavailable for use. The loss of bed space caused overcrowding in general population housing areas.

In 2020, conditions of over-crowding remained and necessitated the continued use of percentage release to manage the inmate population. Inmates serving traditional county sentence completed 10 percent of their court ordered sentences. Inmates serving sentences for felony serious and/or violent offenses (M7 charges) served 100 percent of their sentences, minus any time credits earned. Inmates sentenced under 1170 PC (AB109) served 100 percent of their sentences, but it was later reduced to 70 percent of their sentences, minus any time credits earned. For further information regarding this year's percentage release criteria see page 9 of this report.

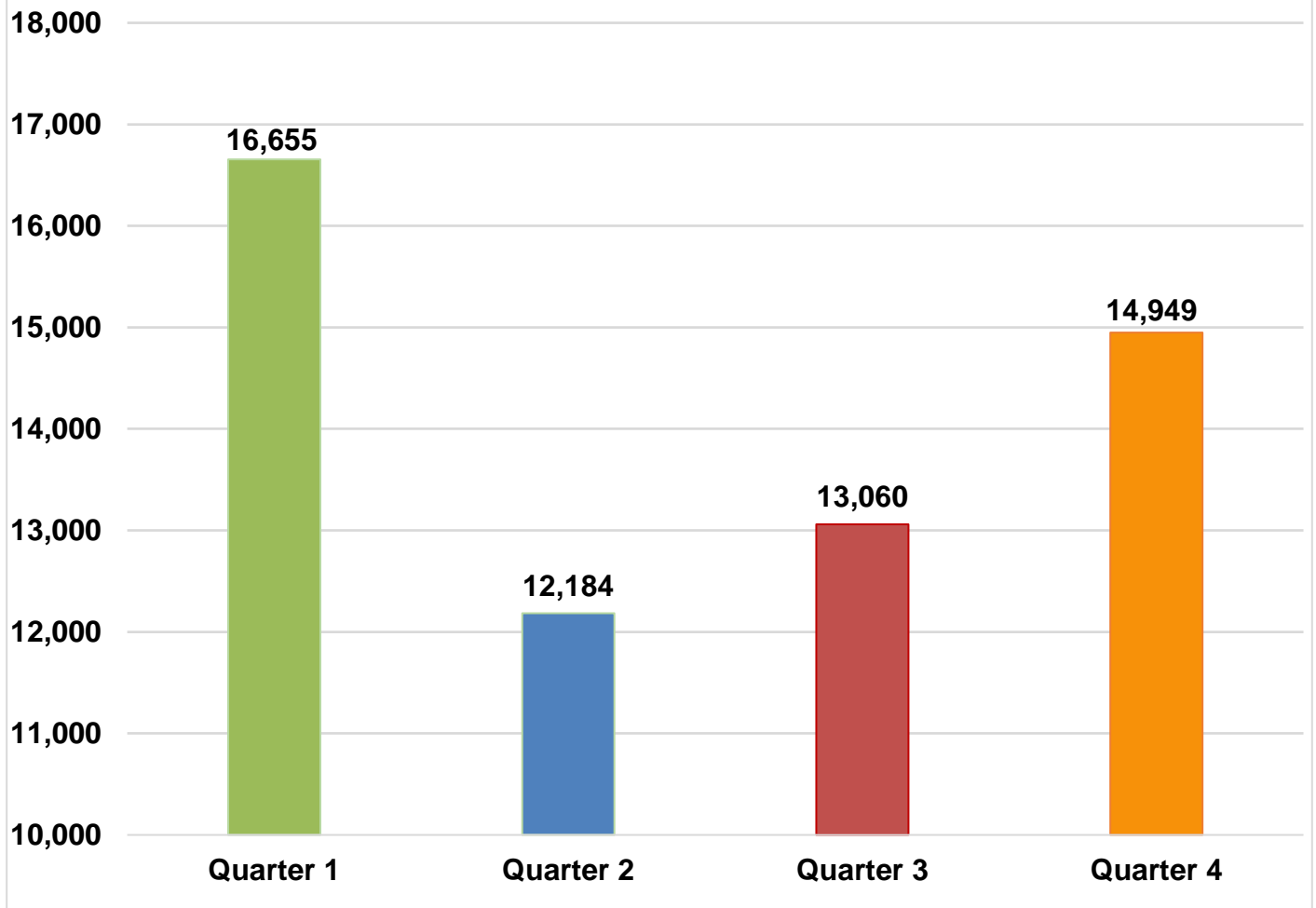
In 2020, the average number of inmates participating in an Alternatives to Custody (ATC) Program (160) decreased by 36 percent compared to the previous year (249). The continued decline of inmates participating in ATC programs may be due to the continued reduction in the release percentage and the difficulty to find qualified candidates who meet the criteria. For additional information regarding ATC programs see page 39 of this report.

Information encompassed in this report/document depicts data related to a specific date and time. Data may differ based on numerous factors related to an inmate's status, disposition, facility, etc. Information may differ based on systems queried, archived information, date/time parameters or numerous other factors. Information in disparate reports should not be combined as data sets may be inconsistent in queries and responses.

POPULATION TRENDS

LA COUNTY INMATE POPULATION

2020 Yearly Los Angeles County Overall Inmate Count

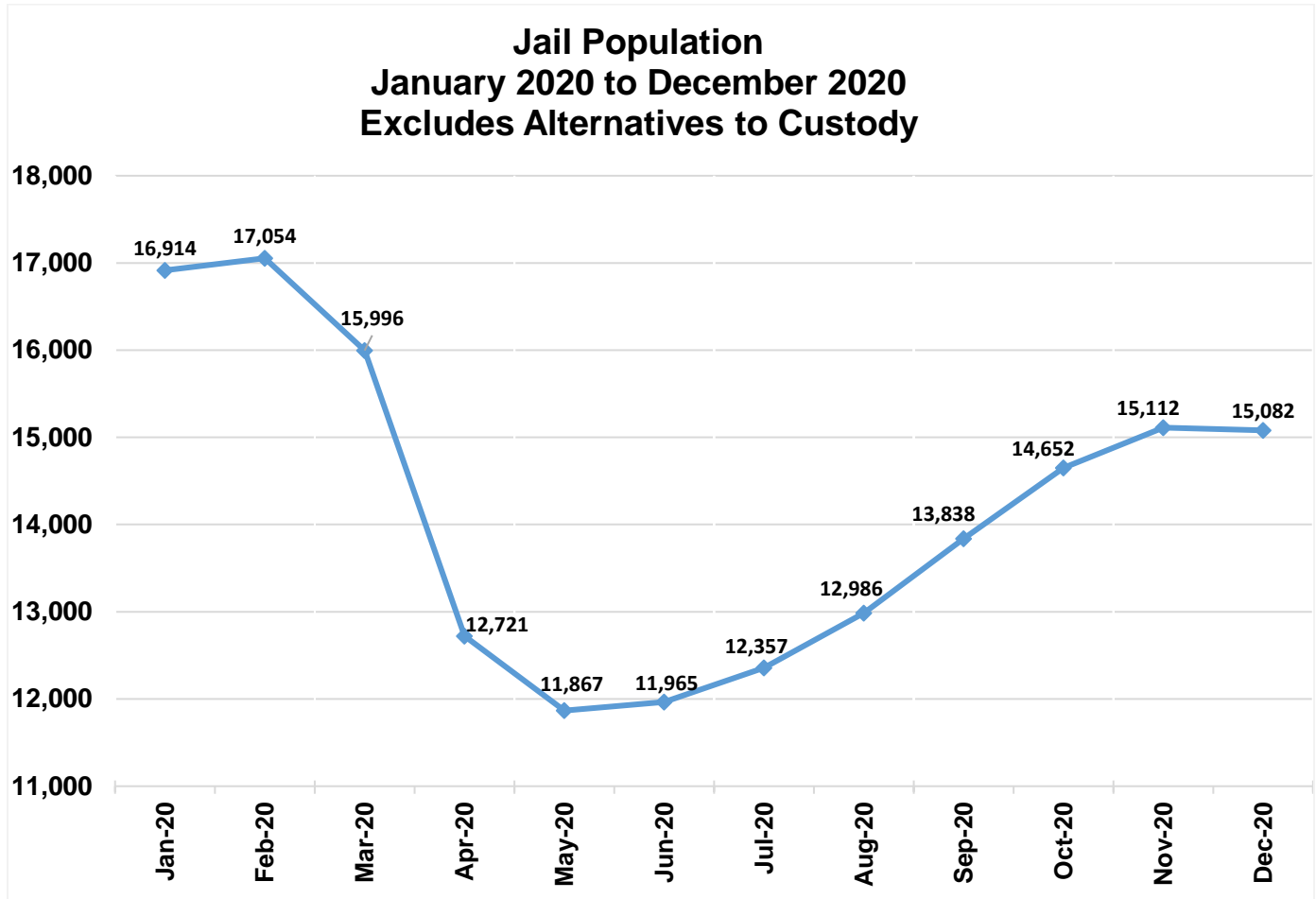


2020 Yearly Overall Division ADIP

14,212

Yearly Division ADIP reflects all inmates processing into IRC, excludes ATC.

Monthly ADIP Trend



Ten Year ADIP Comparison		
Year	ADIP	Notes
2011	15,014	(Oct - AB109 enacted)
2012	18,043	
2013	18,687	
2014	18,680	(Nov - Prop 47)
2015	17,049	
2016	16,613	
2017	17,024	
2018	16,910	
2019	17,070	
2020	14,212	(March – COVID-19)

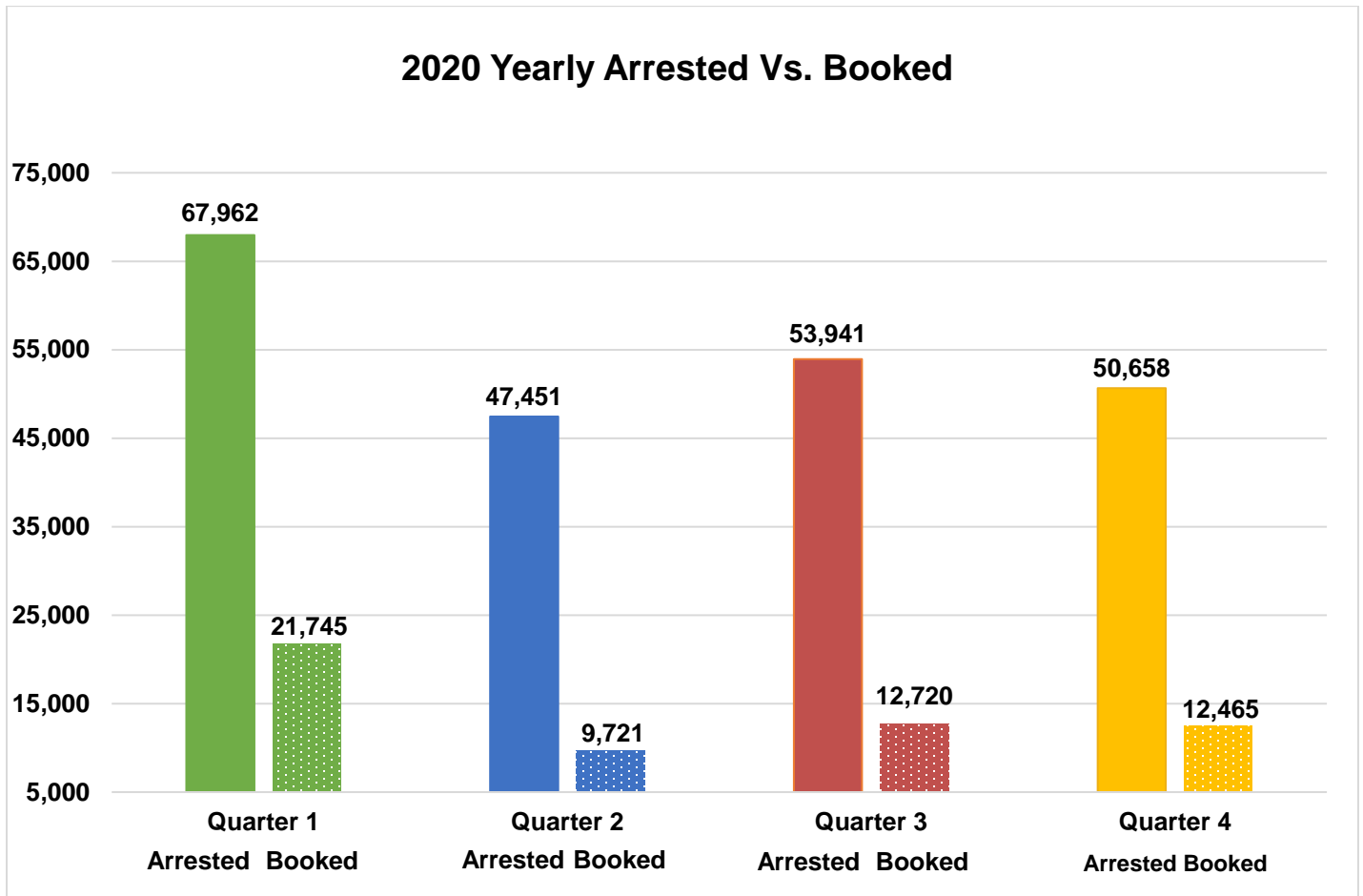
2020 - ARRESTS AND BOOKING STATS

In 2020, the total number of persons arrested was 220,012. This is a decrease (27%) from 303,363 in 2019. In 2020, the total number of persons booked was 56,651. This is a decrease (45%) from 103,839 in 2019.

	Quarter 1		Quarter 2		Quarter 3		Quarter 4		Yearly Total	Yearly Average	Yearly %
	Quarterly Total	%	Quarterly Total	%	Quarterly Total	%	Quarterly Total	%			
Felony	25,007	37%	22,508	48%	24,871	46%	22,821	45%	95,207	23,802	43%
Misdemeanor	41,240	61%	24,374	51%	28,349	53%	27,250	54%	121,213	30,303	55%
Other	1,715	2%	569	1%	721	1%	587	1%	3,592	898	2%
Total Arrested	67,962		47,451		53,941		50,658		220,012	55,003	
Total Booked into LA County	21,745	32%	9,721	20%	12,720	24%	12,465	25%	56,651	14,163	26%

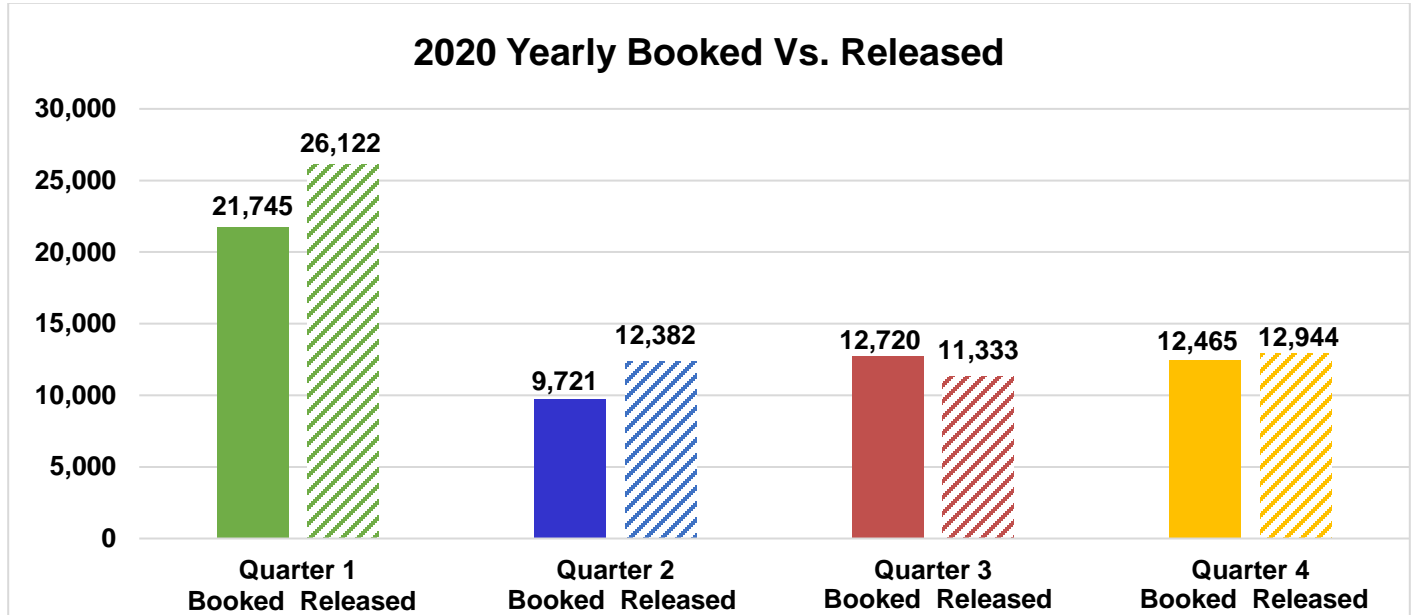
2020 YEARLY - ARRESTS VS. BOOKINGS

The graph below compares the total Arrests vs. Bookings for 2020.



2020 YEARLY - BOOKINGS VS. RELEASES

The Department released approximately 62,781 inmates in 2020.



LA COUNTY JAIL RELEASE PRACTICES FOR 2020

Due to conditions of overcrowding, during this year traditional county sentenced inmates were subject to early release under the following conditions. In an effort to mitigate the spread of COVID-19, additional release measures were used. Release percentages for AB109 inmates were temporarily changed. The M7 charges were modified, shorts were extended by 60 days, and additional releases were made in collaboration with other county agencies. Bookings were affected by bail changes and COVID-19. Per Governor Gavin Newsom's executive order, releases to state prisons were suspended on March 24, 2020. As a result, the inmate population awaiting transfer to state prison significantly increased.

Quarter	Release Criteria Male	Release Criteria Female	¹ M7 Release Criteria		² Short Sentence Male	² Short Sentence Female
			Felony	Misdemeanor		
Quarter 1	10%	10%	100%	100%	^(a) 180 to 240 days	^(a) 180 to 240 days
Quarter 2	10%	10%	100%	100%	240 days	240 days
Quarter 3	10%	10%	100%	100%	240 days	240 days
Quarter 4	10%	10%	100%	^(b) 100% to 10%	240 days	240 days

¹Inmates classified as M7 have sentences for designated serious and/or violent offenses or have notoriety in the community, which requires their record jacket to go through extra 'security' checks upon release from Sheriff's custody.

²Shorts are inmates sentenced to a term in county jail, which after all legal credits are awarded and the current jail percentage time is considered, are immediately released from Sheriff's custody after processing from court.

(a) On March 2020, traditional County Sentences changed from 180 days to 240 days for short/early release.

(b) On December 2020, Misdemeanor M7 charges were changed from 100% to 10%.

Homeless

The chart below provides an average breakdown of the inmate population who stated they were homeless by gender, major race and age category, which is 25% of the total population.

	Quarter 1	Quarter 2	Quarter 3	Quarter 4	AVERAGE
Male	3,941	2,674	2,805	3,325	3,186
Female	659	345	344	390	435
Total	4,600	3,019	3,149	3,715	3,621

	Quarter 1	Quarter 2	Quarter 3	Quarter 4	AVERAGE
Hispanic	2,193	1,433	1,535	1,862	1,756
Black	1,427	1,003	1,058	1,188	1,169
White	833	479	448	541	575
Other	147	104	108	124	121
Total	4,600	3,019	3,149	3,715	3,621

	Quarter 1	Quarter 2	Quarter 3	Quarter 4	AVERAGE
18 to 25	836	609	618	709	693
26 to 34	1,531	1,005	1,075	1,313	1,231
35 to 39	685	415	464	544	527
40 to 44	515	356	349	408	407
45 & Older	1,033	634	643	741	763
Total	4,600	3,019	3,149	3,715	3,621

**Effective September 2018, homeless data is collected from ATAR.*

***Information contained is based on a snapshot of the daily inmate population purge every Tuesday.*

Veteran

The chart below provides an average breakdown of the inmate population who stated they have served in the United State Military by gender, major race and age category, which is 2% of the total population.*

	Quarter 1	Quarter 2	Quarter 3	Quarter 4	AVERAGE
Male	335	240	231	255	265
Female	15	10	7	10	11
Total	350	250	238	265	276

	Quarter 1	Quarter 2	Quarter 3	Quarter 4	AVERAGE
Hispanic	92	67	73	80	78
Black	132	105	85	95	104
White	108	67	65	74	79
Other	18	11	15	16	15
Total	350	250	238	265	276

	Quarter 1	Quarter 2	Quarter 3	Quarter 4	AVERAGE
18 to 25	18	15	15	14	15
26 to 34	67	50	52	53	56
35 to 39	51	39	35	38	41
40 to 44	44	32	34	37	37
45 & Older	170	114	102	123	127
Total	350	250	238	265	276

**These are numbers based upon self-identification and have not been confirmed by the Veterans Administration.*

***Effective September 2018, veteran data is collected from ATAR.*

****Information contained is based on a snapshot of the daily inmate population purge every Tuesday.*

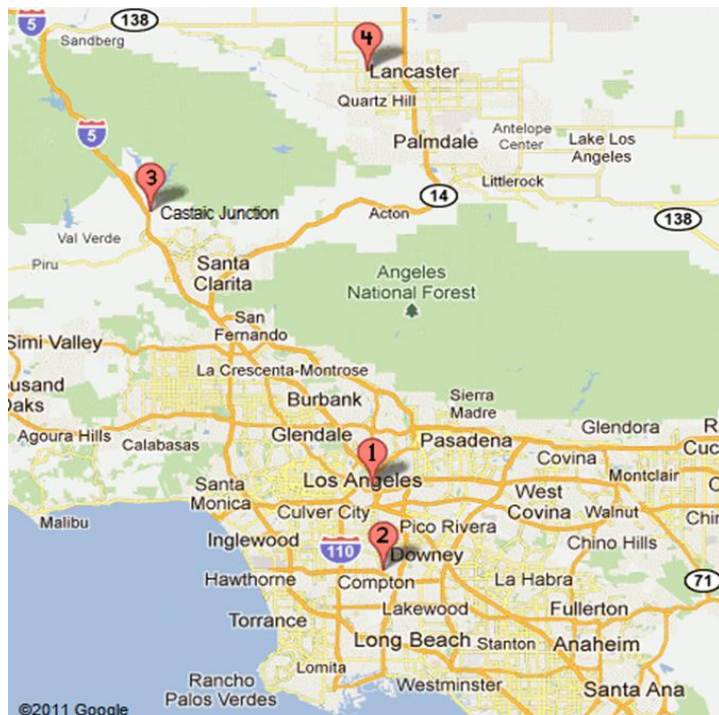
FACILITY OVERVIEW

RATED CAPACITY

The Board of State and Community Corrections (BSCC) is a government body which recommends capacity limits for county jails. BSCC conducts biennial jail inspections; LASD was rated in August 2018.

Board of State and Community Corrections				
LASD Custody Facilities	BSCC Rated Capacity	Quarterly Facility ADIP	Above BSCC Rated Capacity	% Over BSCC Capacity
Men's Central Jail	3,512	3,811	299	9%
Men's Central Jail Outpatient Clinic	Unrated	386	-	-
Twin Towers Correctional Facility	2,432	2,847	415	17%
Correctional Treatment Center	Unrated	110	-	-
Century Regional Detention Facility	1,708	1,457	-251	-15%
CRDF Reception Center	Unrated	29	-	-
Pitchess Detention Center – East	926	38	-888	-96%
Pitchess Detention Center – North	830	1,218	388	47%
Pitchess Detention Center – South	782	725	-57	-7%
North County Correctional Facility	2,214	3,364	1,150	52%
Inmate Reception Center	Unrated	204	-	-
LCMC Jail Wards	Unrated	25	-	-
TOTAL BSCC RATED CAPACITY*	YEARLY RATED FACILITY ADIP	TOTAL ABOVE BSCC RATED CAPACITY	TOTAL % ABOVE BSCC CAPACITY	TOTAL % OVER BSCC CAPACITY EXCLUDING EAST FACILITY
12,404	13,460	1,056	9%	17%

*Statistical data gathered from *Board of State and Community Corrections Inspection Report 8/2018*.



LA County Jail Facilities

- 1**
- Men's Central Jail (MCJ)
- Twin Towers Correctional Facility (TTCF)
- Los Angeles County Medical Center (LCMC)
- Correctional Treatment Center (CTC)
- Inmate Reception Center (IRC)
- 2**
- Century Regional Detention Facility (CRDF)
- 3**
- Pitchess Detention Center (PDC)
- PDC East Facility
- PDC North Facility
- PDC South Facility
- North County Correctional Facility (NCCF)
- 4**
- Mira Loma Detention Center (MLDC)

JAIL HOUSING FACILITIES

MEN'S CENTRAL JAIL TOTAL INMATE POPULATION 2020						
SECURITY LEVEL	Quarter 1	Quarter 2	Quarter 3	Quarter 4	Yearly Average	% Of Population
SECURITY LEVEL LOW 1-4	864	521	521	325	558	13%
SECURITY LEVEL MEDIUM 5-7	2,795	2,288	2,539	3,112	2,683	64%
SECURITY LEVEL HIGH 8-9	824	868	1,081	1,087	965	23%
FACILITY TOTAL	4,483	3,677	4,141	4,524	4,206	100%
SUB POPULATION HOUSED THROUGHOUT FACILITY ¹						
HOUSING TYPE	Quarter 1	Quarter 2	Quarter 3	Quarter 4	Yearly Average	
ADMINISTRATIVELY SEGREGATED INMATES (K-10) ²	43	21	34	36	34	
RESTRICTIVE HOUSING (K-17, K-18, K-19, K-20) ³	313	298	320	341	318	
ADMINISTRATIVELY SEGREGATED INMATES (K-1) ⁴	12	7	6	7	8	
AMERICANS WITH DISABILITIES ACT (ADA)	142	125	152	175	149	
DISCIPLINE ⁵	33	35	25	30	31	
GENERAL POPULATION ON PSYCHOTROPIC MEDS	1,045	1,106	1,292	1,501	1,236	
INMATE WORKERS	635	486	477	478	519	
LGBT (K-6 G) INMATES	263	279	299	361	301	
MEDICAL/CLINIC	293	340	367	414	354	
OTHER (K-6T/B/C) ⁶	132	163	211	247	188	
PRO-PER	67	74	79	84	76	
HOH (H.O.P.E. Program)	13	21	17	24	19	
SEXUALLY VIOLENT PREDATORS	1	2	3	3	2	
SEX CRIMES AGAINST CHILDREN (K-6 Y) INMATES	163	218	270	331	246	
DEVELOPMENTALLY DISABLED	11	9	14	14	12	

[1] Sub population housed throughout facility includes those who are classified with special housing needs and are included in the total inmate population. An inmate may belong to more than one subpopulation.

[2] K-10 Administratively segregated for various reasons including danger to self or others.

[3] K-17 Disruptive; K-18 Protective Custody; K-19 Major Disruptive; K-20 Highly Dangerous.

[4] K-1 Law Enforcement related in custody.

[5] Majority of discipline inmates are now housed at TTCF.

[6] K-6T Contempt of court, K-6B threatened by others, K-6C protective custody.

*Statistical data are averages gathered from Facility Count Sheet every Tuesday.

**TWIN TOWERS CORRECTIONAL FACILITY
TOTAL INMATE POPULATION
2020**

SECURITY LEVEL	Quarter 1	Quarter 2	Quarter 3	Quarter 4	Yearly Average	% Of Population
SECURITY LEVEL LOW 1-4	549	363	368	225	376	13%
SECURITY LEVEL MEDIUM 5-7	2,104	1,722	1,842	2,041	1,927	64%
SECURITY LEVEL HIGH 8-9	519	547	743	930	685	23%
FACILITY TOTAL	3,172	2,632	2,953	3,196	2,988	100%

SUB POPULATION HOUSED THROUGHOUT FACILITY¹

HOUSING TYPE	Quarter 1	Quarter 2	Quarter 3	Quarter 4	Yearly Average
ADMINISTRATIVELY SEGREGATED INMATES (K-10) ²	48	44	74	80	62
RESTRICTIVE HOUSING (K-17, K-18, K-19, K-20) ³	97	94	100	118	102
ADMINISTRATIVELY SEGREGATED INMATES (K-1) ⁴	1	0	2	4	2
ADMINISTRATIVELY SEGREGATED INMATES (K-6B) ⁵	70	64	69	90	73
AMERICAN'S WITH DISABILITIES (ADA)	209	161	174	188	183
DISCIPLINE	81	23	14	20	35
FEMALE MEDICAL (CTC)	16	10	11	9	12
GENERAL POPULATION ON PSYCHOTROPIC MEDS SECURITY LEVEL 1-4	56	56	62	29	51
GENERAL POPULATION ON PSYCHOTROPIC MEDS SECURITY LEVEL 5-7	237	240	248	263	247
GENERAL POPULATION ON PSYCHOTROPIC MEDS SECURITY LEVEL 8-9	75	93	125	152	111
LGBT (K-6 G) INMATES	94	50	54	65	66
MEDICAL (CTC)	97	92	102	108	100
MENTALLY ILL - HIGH OBSERVATION HOUSING (HOH)	966	776	886	950	895
MENTALLY ILL – MODERATE OBSERVATION / SERVICE AREA (MOH)	2,382	1,812	2,017	2,370	2,145
MENTALLY ILL - MODERATE OBSERVATION HOUSING (MOH) SEX CRIMES AGAINST CHILDREN (K-6 Y) INMATES	112	106	84	79	95

[1] Sub population housed throughout facility includes those who are classified with special housing needs and are included in the total inmate population. An inmate may belong to more than one subpopulation.

[2] K-10: Administratively segregated for various reasons including danger to self or others.

[3] K-17: Disruptive; K-18: Protective Custody; K-19: Major Disruptive; K-20: Highly Dangerous.

[4] K-1: Related to Law Enforcement-segregated from general population for safety reasons.

[5] K-6B: Administratively segregated are at risk of assault in GP housing.

*Statistical data are averages gathered from Facility Count Sheet every Tuesday.

**CENTURY REGIONAL DETENTION CENTER
TOTAL INMATE POPULATION
2020**

SECURITY LEVEL	Quarter 1	Quarter 2	Quarter 3	Quarter 4	Yearly Average	% Of Population
SECURITY LEVEL LOW 1-4	651	274	186	181	323	22%
SECURITY LEVEL MEDIUM 5-7	1,222	826	950	1,055	1,013	68%
SECURITY LEVEL HIGH 8-9	177	104	120	166	142	10%
FACILITY TOTAL	2,050	1,204	1,256	1,402	1,478	100%

SUB POPULATION HOUSED THROUGHOUT FACILITY¹

HOUSING TYPE	Quarter 1	Quarter 2	Quarter 3	Quarter 4	Yearly Average
ADMINISTRATIVE SEGRAGATED INMATES (K-10) ²	22	17	16	19	19
RESTRICTIVE HOUSING (K-17, K-18, K-19, K-20) ³	22	20	21	25	22
AMERICANS WITH DISABILITIES (ADA)	33	29	29	35	32
PREGNANT (K-8)	37	13	16	17	21
DISCIPLINE	30	12	13	15	18
INMATE WORKERS	333	96	140	117	172
MEDICAL/CLINIC ⁴	8	6	150	158	81
MENTALLY ILL - HIGH OBSERVATION HOUSING (HOH)	319	195	246	270	258
MENTALLY ILL - MODERATE OBSERVATION HOUSING (MOH)	389	234	255	301	295
OTHER (K-6 B)	3	3	5	5	4
SEX CRIMES AGAINST CHILDREN (K-6 Y) INMATES	7	5	4	5	5

[1] Sub population housed throughout facility includes those who are classified with special housing needs and are included in the total inmate population. An inmate may belong to more than one subpopulation.

[2] K-10-Administratively segregated for various reasons including danger to self or others.

[3] K-17: Disruptive; K-18: Protective Custody; K-19: Major Disruptive; K-20: Highly Dangerous.

[4] July 2020, additional medical beds were added to quarantine inmates due to COVID-19.

*Statistical data are averages gathered from Facility Count Sheet every Tuesday.

PITCHESS DETENTION CENTER - EAST FACILITY TOTAL INMATE POPULATION 2020						
SECURITY LEVEL	Quarter 1	Quarter 2	Quarter 3	Quarter 4	Yearly Average	% Of Population
SECURITY LEVEL LOW 1-4	52	34	22	16	31	79%
SECURITY LEVEL MEDIUM 5-7	14	5	5	7	8	21%
SECURITY LEVEL HIGH 8-9	0	0	0	0	0	0%
FACILITY TOTAL	66	39	27	23	39	100%
SUB POPULATION HOUSED THROUGHOUT FACILITY ¹						
HOUSING TYPE	Quarter 1	Quarter 2	Quarter 3	Quarter 4	Yearly Average	
FIRE CAMP SECURITY LEVELS 1-4	52	34	22	16	31	
FIRE CAMP SECURITY LEVELS 5-7	14	5	5	7	8	

[1] Sub population housed throughout facility includes those who are classified with special housing needs and are included in the total inmate population. An inmate may belong to more than one subpopulation.

*Statistical data are averages gathered from Facility Count Sheet every Tuesday.

PITCHESS DETENTION CENTER – NORTH TOTAL INMATE POPULATION 2020						
SECURITY LEVEL	Quarter 1	Quarter 2	Quarter 3	Quarter 4	Yearly Average	% Of Population
SECURITY LEVEL LOW 1-4	237	118	80	48	121	10%
SECURITY LEVEL MEDIUM 5-7	1,100	850	1,013	1,296	1,065	88%
SECURITY LEVEL HIGH 8-9	27	23	26	26	26	2%
FACILITY TOTAL	1,364	991	1,119	1,370	1,212	100%
SUB POPULATION HOUSED THROUGHOUT FACILITY ¹						
HOUSING TYPE	Quarter 1	Quarter 2	Quarter 3	Quarter 4	Yearly Average	
DISCIPLINE ²	24	17	14	21	19	
INMATE WORKERS	90	30	22	64	52	
SEX CRIMES AGAINST CHILDREN INMATES (K-6Y) SECURITY LEVEL 1-7	314	291	319	375	325	
MENTALL ILL – MODERATE OBSERVATION HOUSING (MOH)	293	124	192	132	185	

[1] Sub population housed throughout facility includes those who are classified with special housing needs and are included in the total inmate population. An inmate may belong to more than one subpopulation.

[2] Inmates housed at North Facility for disciplinary reasons.

*Statistical data are averages gathered from Facility Count Sheet every Tuesday.

PITCHESS DETENTION CENTER – SOUTH TOTAL INMATE POPULATION 2020						
SECURITY LEVEL	Quarter 1	Quarter 2	Quarter 3	Quarter 4	Yearly Average	% Of Population
SECURITY LEVEL LOW 1-4	530	245	142	73	248	34%
SECURITY LEVEL MEDIUM 5-7	813	335	347	389	471	66%
SECURITY LEVEL HIGH 8-9	0	0	0	0	0	0%
FACILITY TOTAL	1,343	580	489	462	719	100%
SUB POPULATION HOUSED THROUGHOUT FACILITY ¹						
HOUSING TYPE	Quarter 1	Quarter 2	Quarter 3	Quarter 4	Yearly Average	
BACK ON TRACK	67	39	29	8	36	
INMATE WORKERS	445	180	166	146	234	

[1] Sub population housed throughout facility includes those who are classified with special housing needs and are included in the total inmate population. An inmate may belong to more than one subpopulation.

*PDC South facility closed barracks 34, 35 and 36 on October 2020 due to budget constraints.

**Statistical data are averages gathered from Facility Count Sheet every Tuesday.

NORTH COUNTY CORRECTIONAL FACILITY TOTAL INMATE POPULATION 2020						
SECURITY LEVEL	Quarter 1	Quarter 2	Quarter 3	Quarter 4	Yearly Average	% Of Population
SECURITY LEVEL LOW 1-4	527	296	211	200	309	9%
SECURITY LEVEL MEDIUM 5-7	2,515	2,091	2,104	2,921	2,408	72%
SECURITY LEVEL HIGH 8-9	755	558	567	627	627	19%
FACILITY TOTAL	3,797	2,945	2,882	3,748	3,344	100%
SUB POPULATION HOUSED THROUGHOUT FACILITY ¹						
HOUSING TYPE	Quarter 1	Quarter 2	Quarter 3	Quarter 4	Yearly Average	
ADMINISTRATIVELY SEGREGATED INMATES (K-10) ²	0	0	0	0	0	
ADMINISTRATIVELY SEGREGATED INMATES (K-6B)	155	125	128	162	143	
DISCIPLINE	137	74	106	86	101	
INMATE WORKERS	751	324	519	552	537	
MEDICAL/CLINIC	6	0	1	6	3	
VETERAN	46	14	20	44	31	

[1] Sub population housed throughout facility includes those who are classified with special housing needs and are included in the total inmate population. An inmate may belong to more than one subpopulation.

[2] K-10-Administratively segregated for various reasons including danger to self or others.

*Statistical data are averages gathered from Facility Count Sheet every Tuesday.

POPULATION OVERVIEW

INMATE POPULATION DEMOGRAPHICS

Racial demographics for 2020 indicate the three most populous racial groups within the LA County Jail for both male and female offenders are Hispanic (54%), Black (30%), and White (13%).

COMBINED	Quarter 1		Quarter 2		Quarter 3		Quarter 4		Yearly Average	Yearly %
Race	Population	%	Population	%	Population	%	Population	%		
Hispanic	8,655	52%	6,401	53%	6,986	54%	8,137	55%	7,545	54%
Black	4,838	29%	3,716	31%	4,000	31%	4,441	30%	4,249	30%
White	2,469	15%	1,565	13%	1,591	12%	1,855	12%	1,870	13%
All Others	554	4%	395	3%	400	3%	453	3%	451	3%
Chinese	51	0%	39	0%	40	0%	44	0%	43	0%
Filipino	34	0%	19	0%	14	0%	17	0%	21	0%
Pacific Islanders	21	0%	17	0%	18	0%	14	0%	17	0%
Japanese	3	0%	4	0%	4	0%	4	0%	4	0%
American Indian	10	0%	9	0%	10	0%	11	0%	10	0%
Total	16,635	100%	12,165	100%	13,063	100%	14,976	100%	14,210	100%

MALE	Quarter 1		Quarter 2		Quarter 3		Quarter 4		Yearly Average	Yearly %
Race	Population	%	Population	%	Population	%	Population	%		
Hispanic	7,701	53%	5,875	55%	6,423	54%	7,479	56%	6,870	54%
Black	4,185	29%	3,294	30%	3,572	31%	3,999	29%	3,763	30%
White	2,045	14%	1,359	12%	1,381	12%	1,606	12%	1,598	13%
All Others	472	4%	347	3%	350	3%	402	3%	393	3%
Chinese	45	0%	35	0%	37	0%	41	0%	39	0%
Filipino	27	0%	16	0%	13	0%	16	0%	18	0%
Pacific Islanders	19	0%	15	0%	15	0%	12	0%	15	0%
Japanese	3	0%	3	0%	3	0%	4	0%	3	0%
American Indian	9	0%	9	0%	10	0%	11	0%	10	0%
Total	14,506	100%	10,953	100%	11,804	100%	13,570	100%	12,709	100%

FEMALE	Quarter 1		Quarter 2		Quarter 3		Quarter 4		Yearly Average	Yearly %
Race	Population	%	Population	%	Population	%	Population	%		
Hispanic	954	45%	526	44%	563	45%	658	47%	675	45%
Black	653	31%	422	35%	428	34%	442	31%	486	33%
White	424	20%	206	17%	210	17%	249	18%	272	18%
All Others	82	4%	48	4%	50	4%	51	4%	58	4%
Chinese	6	0%	4	0%	3	0%	3	0%	4	0%
Filipino	7	0%	3	0%	1	0%	1	0%	3	0%
Pacific Islanders	2	0%	2	0%	3	0%	2	0%	2	0%
Japanese	0	0%	1	0%	1	0%	0	0%	1	0%
American Indian	1	0%	0	0%	0	0%	0	0%	0	0%
Total	2,129	100%	1,212	100%	1,259	100%	1,406	100%	1,501	100%

*Statistical data are averages gathered from *Custody Division Daily Briefing Report* every Tuesday.

INMATE POPULATION OFFENDER AGE GROUPS

The 26-34 year old cohort was the most frequently represented age group within the jail population for 2020, followed by the 18-25 year old cohort.

COMBINED	Quarter 1		Quarter 2		Quarter 3		Quarter 4		Yearly Average	Yearly %
Age Group	Population	%	Population	%	Population	%	Population	%		
18 to 25	3,541	21%	2,722	23%	2,864	22%	3,158	21%	3,072	22%
26 to 34	5,722	35%	4,173	34%	4,524	35%	5,287	35%	4,927	35%
35 to 39	2,360	14%	1,676	14%	1,846	14%	2,136	14%	2004	14%
40 to 44	1,709	10%	1,274	10%	1349	10%	1,590	11%	1480	10%
45 & Older	3,303	20%	2,320	19%	2,480	19%	2,805	19%	2727	19%
Total	16,635	100%	12,165	100%	13,063	100%	14,976	100%	14,210	100%

MALE	Quarter 1		Quarter 2		Quarter 3		Quarter 4		Yearly Average	Yearly %
Age Group	Population	%	Population	%	Population	%	Population	%		
18 to 25	3,111	22%	2,471	23%	2,620	22%	2,892	21%	2774	22%
26 to 34	4,918	34%	3,718	34%	4,034	34%	4,748	35%	4,355	34%
35 to 39	2,054	14%	1,510	14%	1,663	14%	1,922	14%	1,787	14%
40 to 44	1,475	10%	1,145	10%	1,218	10%	1,433	11%	1,318	10%
45 & Older	2,948	20%	2,109	19%	2,269	20%	2,575	19%	2,475	20%
Total	14,506	100%	10,953	100%	11,804	100%	13,570	100%	12,709	100%

FEMALE	Quarter 1		Quarter 2		Quarter 3		Quarter 4		Yearly Average	Yearly %
Age Group	Population	%	Population	%	Population	%	Population	%		
18 to 25	430	20%	251	20%	244	19%	266	20%	298	20%
26 to 34	804	38%	456	38%	490	39%	539	38%	572	38%
35 to 39	306	14%	165	14%	183	15%	214	15%	217	14%
40 to 44	234	11%	129	11%	131	10%	157	11%	162	11%
45 & Older	355	17%	211	17%	211	17%	230	16%	252	17%
Total	2,129	100%	1,212	100%	1,259	100%	1,406	100%	1,501	100%

*Statistical data are averages gathered from *Custody Division Daily Briefing Report* every Tuesday.

JAIL POPULATION BY SECURITY LEVEL

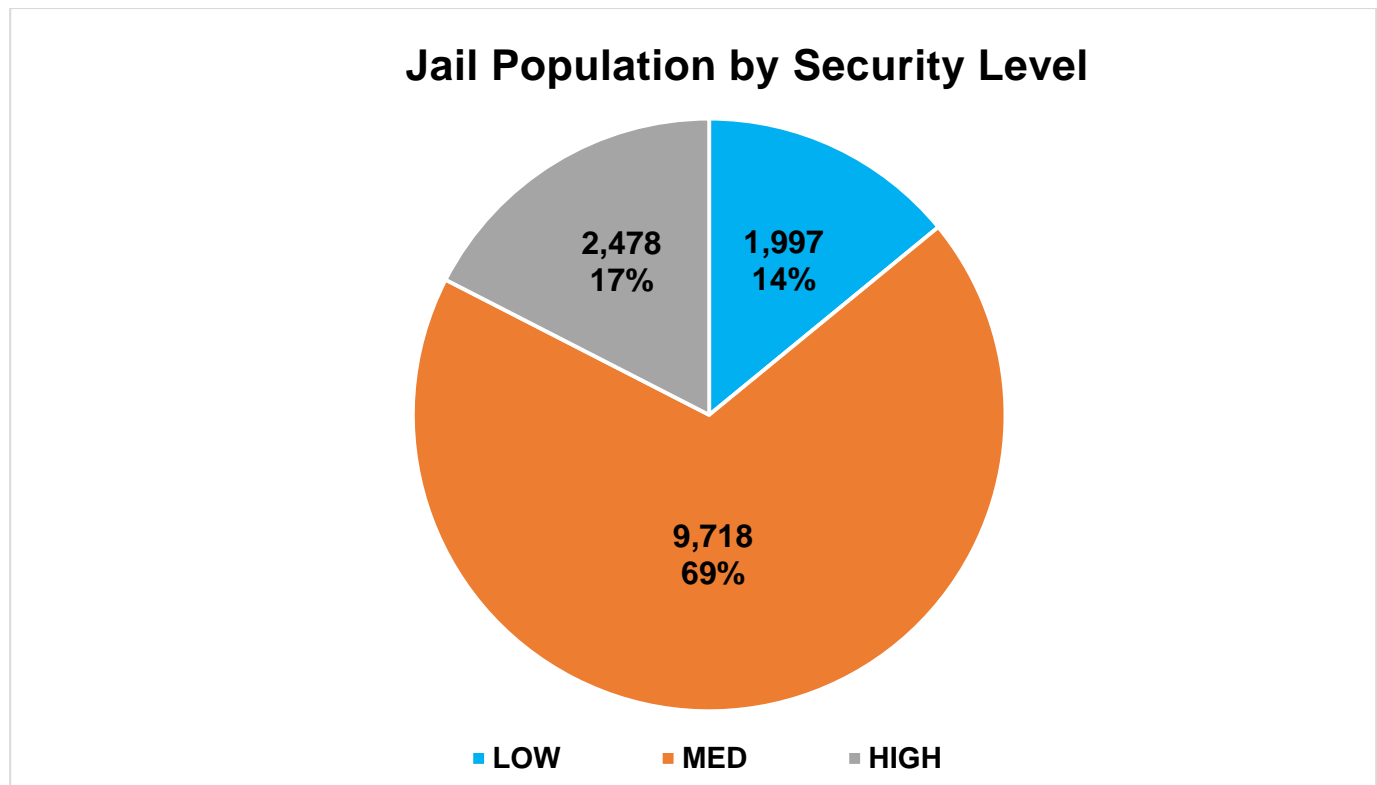
LASD utilizes the Northpointe Classification system to assign security levels to inmates. The security levels guide where an inmate will be housed based on their individual risk for in-custody misconduct. Lower security housing areas offer more programming and privileges to better prepare the inmates for release. Higher security housing is more restricted and therefore limited in what programs are offered, due to potential risk of serious misconduct and/or escape by the high security level inmate population. All inmates are re-evaluated for reclassification of security level which occurs every 45 days.

Jail Population by Security Level				
Quarter	Low	Medium	High	Total
1	3,475	10,754	2,331	16,560
2	1,860	8,187	2,115	12,162
3	1,551	8,941	2,578	13,070
4	1,103	10,991	2,888	14,982
Average	1,997	9,718	2,478	14,193
Percent	14%	69%	17%	100%

*This chart only includes inmates housed in LASD Type II facilities, does not include inmates housed in alternative custody beds.

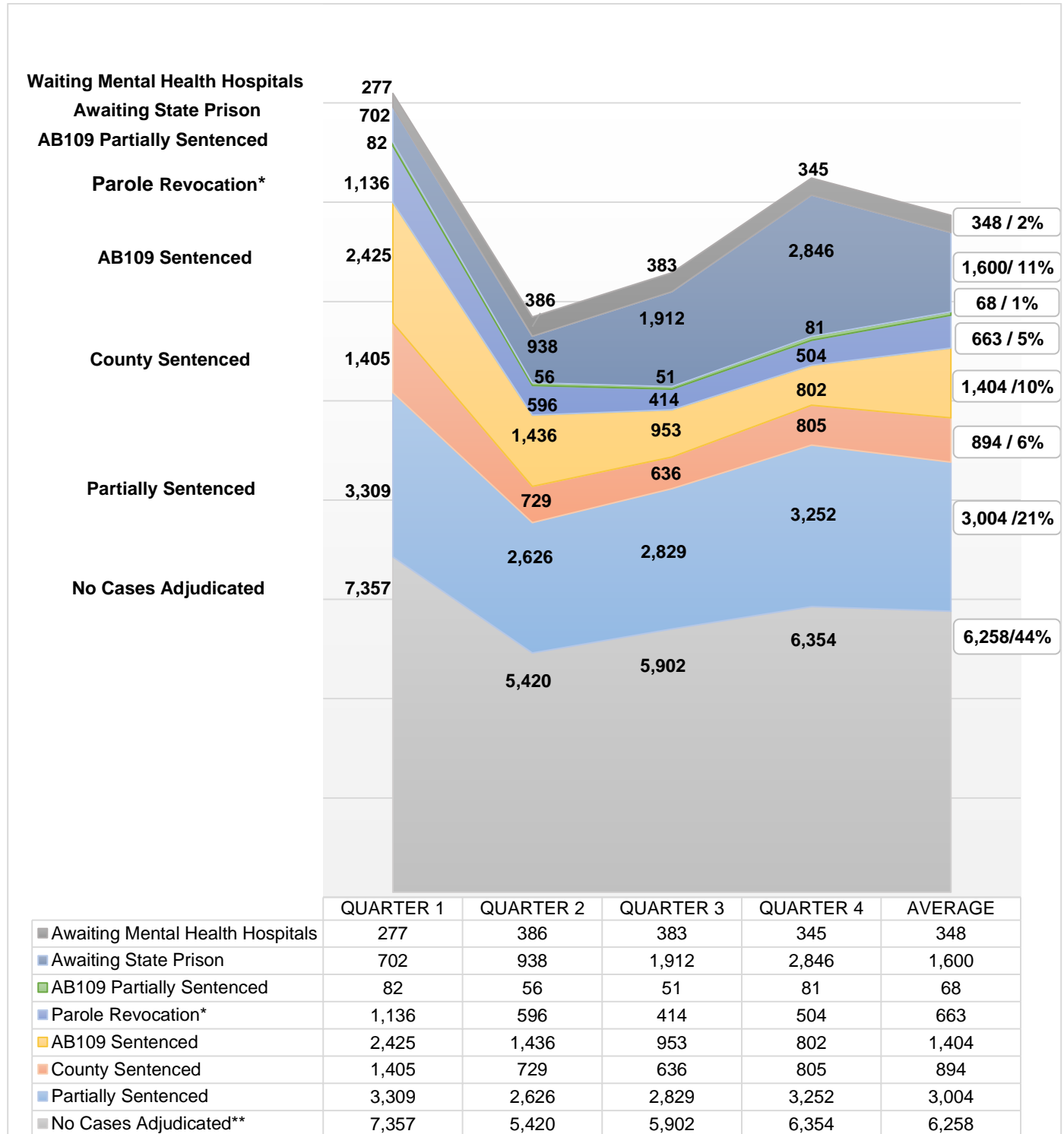
**Information contained is based on a snapshot of the daily inmate population purge every Tuesday.

The pie graph below depicts the average number of inmates housed this year by security level. The percentage is calculated to the Facility ADIP for this year (14,193).



INMATE POPULATION BREAKDOWN

The inmate population consists of various categories of inmates in broad groupings, including: no cases adjudicated, traditional county sentenced, AB 109 sentenced, AB109 sentenced with additional charges, parole/revocation violators, and those awaiting transfer to state prison and hospitals.



*Parole Revocation includes PRCS Revocation 3455, Flash Incarceration 3454 and Inmates with a 3056 hold.

**This report is a general overview of the inmate population. As it does not include all subgroups of the inmate population, it is not intended to be relied upon as a definitive representation of the entire inmate population.

INMATE POPULATION BREAKDOWN CONTINUED

- **AWAITING STATE PRISON**

- During 2020, an average of 1,600 inmates were awaiting transfer to state prison, some while pending trial on other cases. Due to an executive order, CDCR halted the intake and transfer of county jail inmates, resulting in an increase in the population of inmates awaiting state prison.

- **AB109 PAROLE AND PROBATION VIOLATORS**

- An average of 663 AB109 inmates were in custody for violating their parole or probation.

- **AB109 SENTENCED**

- An average of 1,404 inmates were in custody, sentenced under AB109.

- **TRADITIONAL COUNTY SENTENCED INMATE POPULATION**

- The average daily count for the traditional county sentenced (TCS) population was 894, approximately 6% of the inmate population.

- **NO CASES ADJUDICATED**

- During 2020, there were approximately 56,651 new bookings into the County jail. Forty-four percent (44%) of the average daily inmate population (14,212) was comprised of inmates who did not have their cases adjudicated. These include inmates who have an open case and have not been sentenced by the courts, along with court returnees. Court returnees are inmates returning from state prisons or state hospitals to either face new charges, re-litigate past crimes, follow up on competency reports, or for civil matters (witness, child custody, etc.)

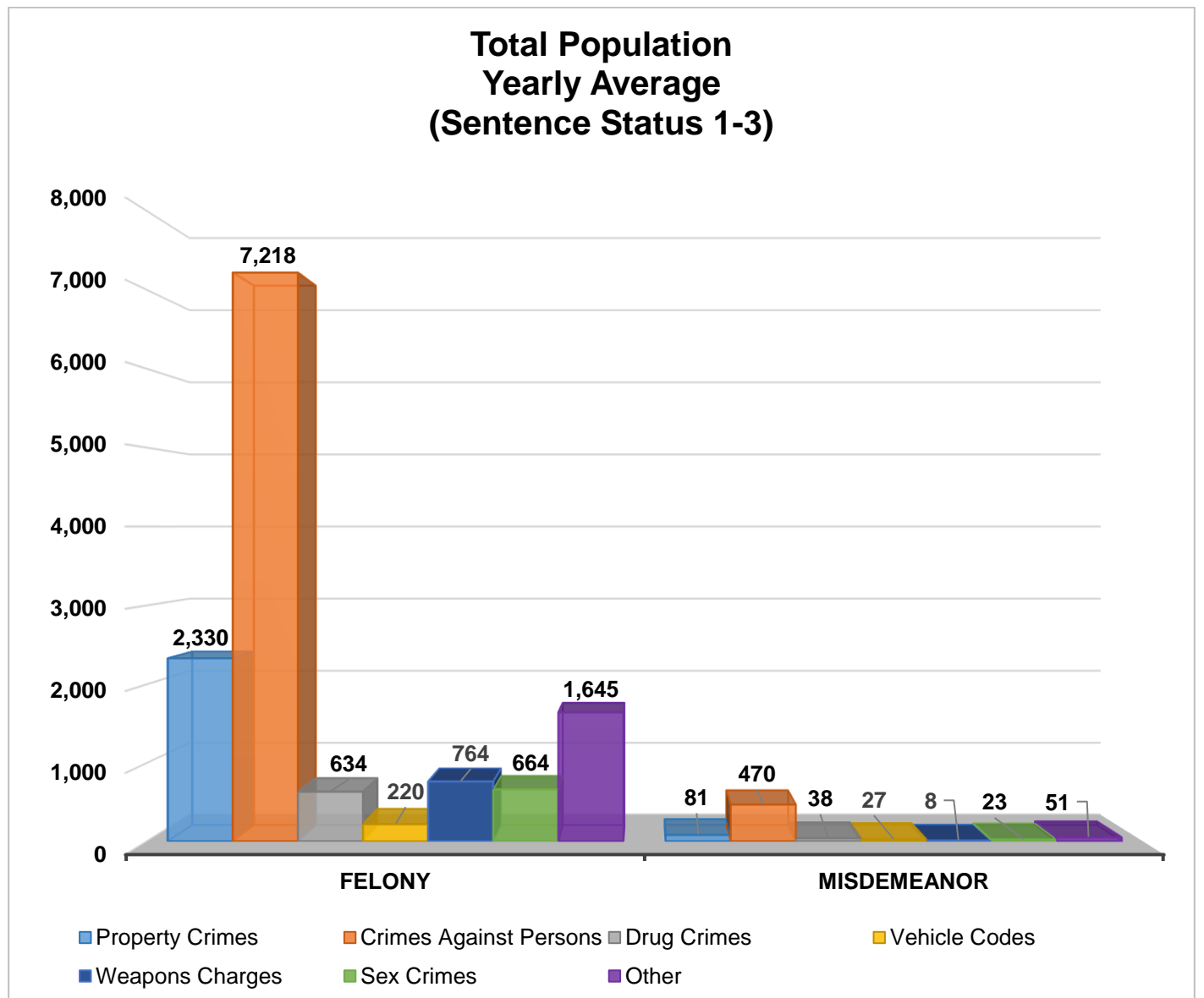
CRIME CLASSIFICATION STATISTICS

The chart below provides an average breakdown for the entire inmate population, both sentenced and un-sentenced, by arrest category.

Total Population (Sentence Status 1-3)

Arrest Category	Property Crimes	Crimes Against Persons	Drug Crimes	Vehicle Codes	Weapons Charges	Sex Crimes	Other	Total	Percentage of the Population
Felony	2,330	7,218	634	220	764	664	1,645	13,475	95%
Misdemeanor	81	470	38	27	8	23	51	698	5%
Total	2,411	7,688	672	247	772	687	1,696	14,173	100%

**Information contained is based on a snapshot of the daily inmate population purged every Tuesday.*



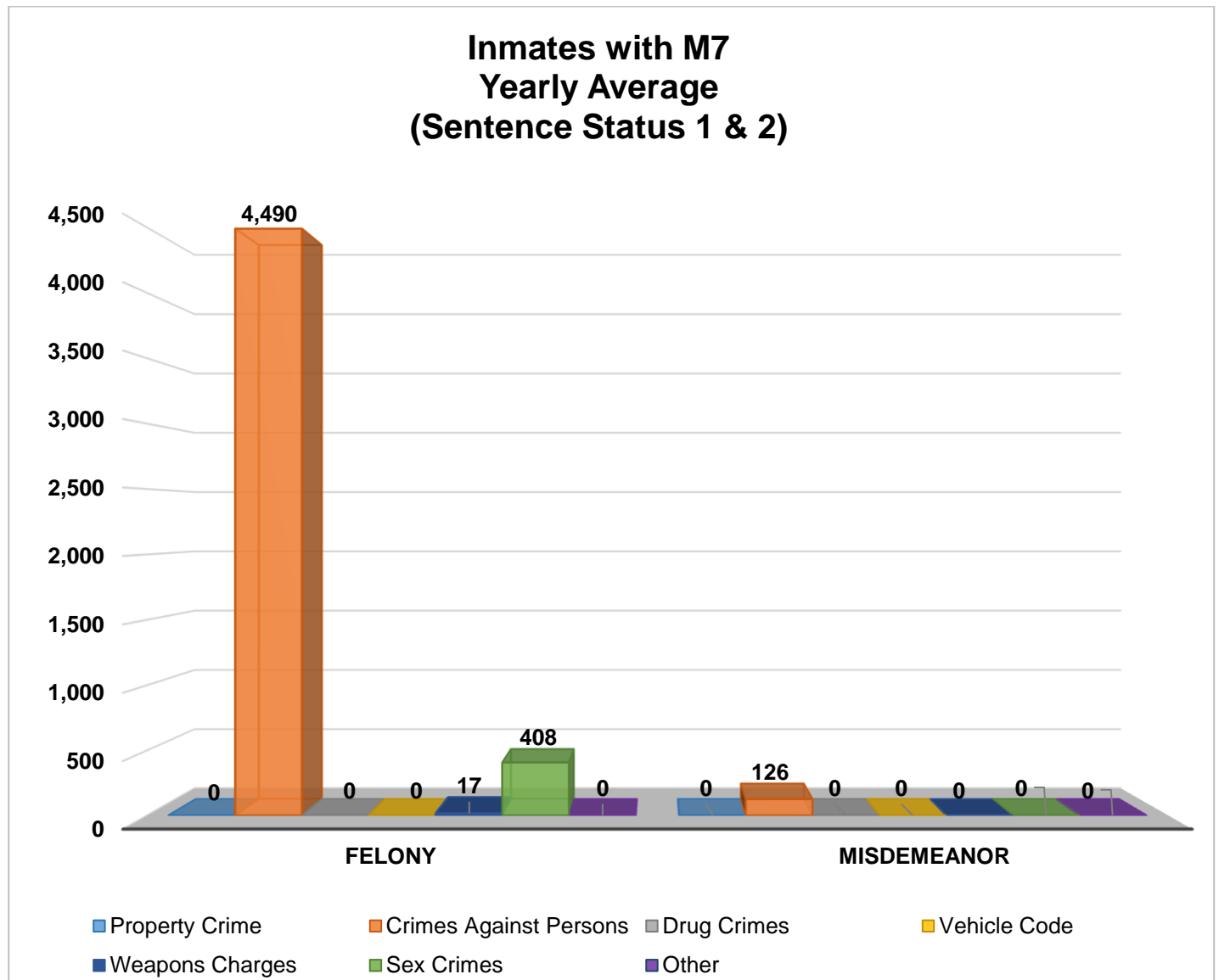
INMATES WITH ASSAULTIVE/VIOLENT CHARGES (M7)

The chart below provides a breakdown for the inmate population with M7 charges, sentence status one and two, by arrest category.

Inmates with Assaultive/Violent Charges (M7) (Sentence Status 1 & 2)

Arrest Category	Property Crimes	Crimes Against Persons	Drug Crimes	Vehicle Code	Weapons Charges	Sex Crimes	Other	Total	Percentage of Sentence Status 1 & 2 Population
Felony	0	4,490	0	0	17	408	0	4,915	98%
Misdemeanor	0	126	0	0	0	0	0	126	2%
Total	0	4,616	0	0	17	408	0	5,041	100%

**Information contained is based on a snapshot of the daily inmate population purged every Tuesday.*

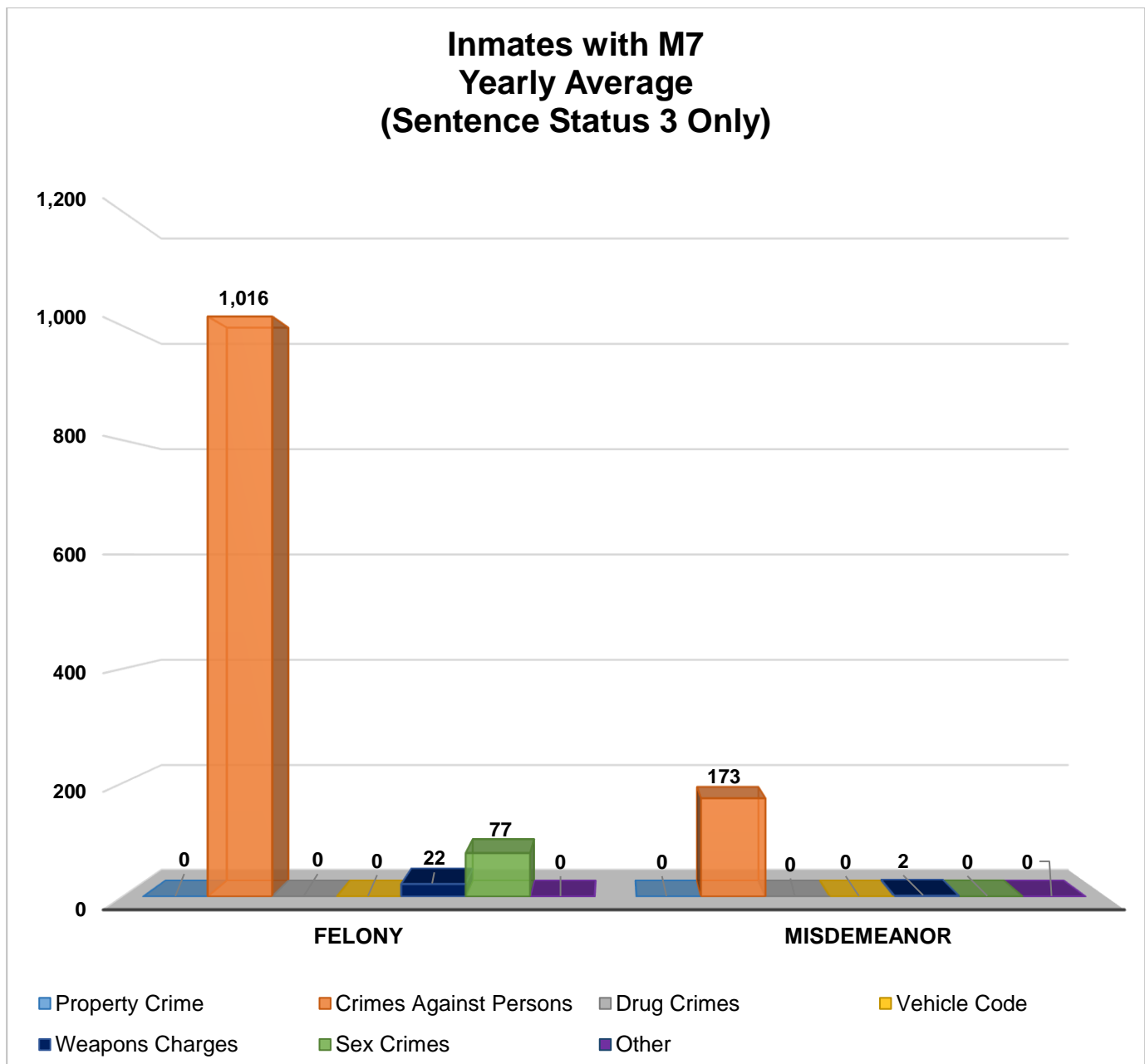


INMATES WITH ASSAULTIVE/VIOLENT CHARGES (M7) CONTINUED

Inmates with Assaultive/Violent Charges (M7) (Sentence Status 3 Only)

Arrest Category	Property Crimes	Crimes Against Persons	Drug Crimes	Vehicle Code	Weapons Charges	Sex Crimes	Other	Total	Percentage of Sentenced Population
Felony	0	1,016	0	0	22	77	0	1,115	86%
Misdemeanor	0	173	0	0	2	0	0	175	14%
Total	0	1,189	0	0	24	77	0	1,290	100%

**Information contained is based on a snapshot of the daily inmate population purged every Tuesday.*



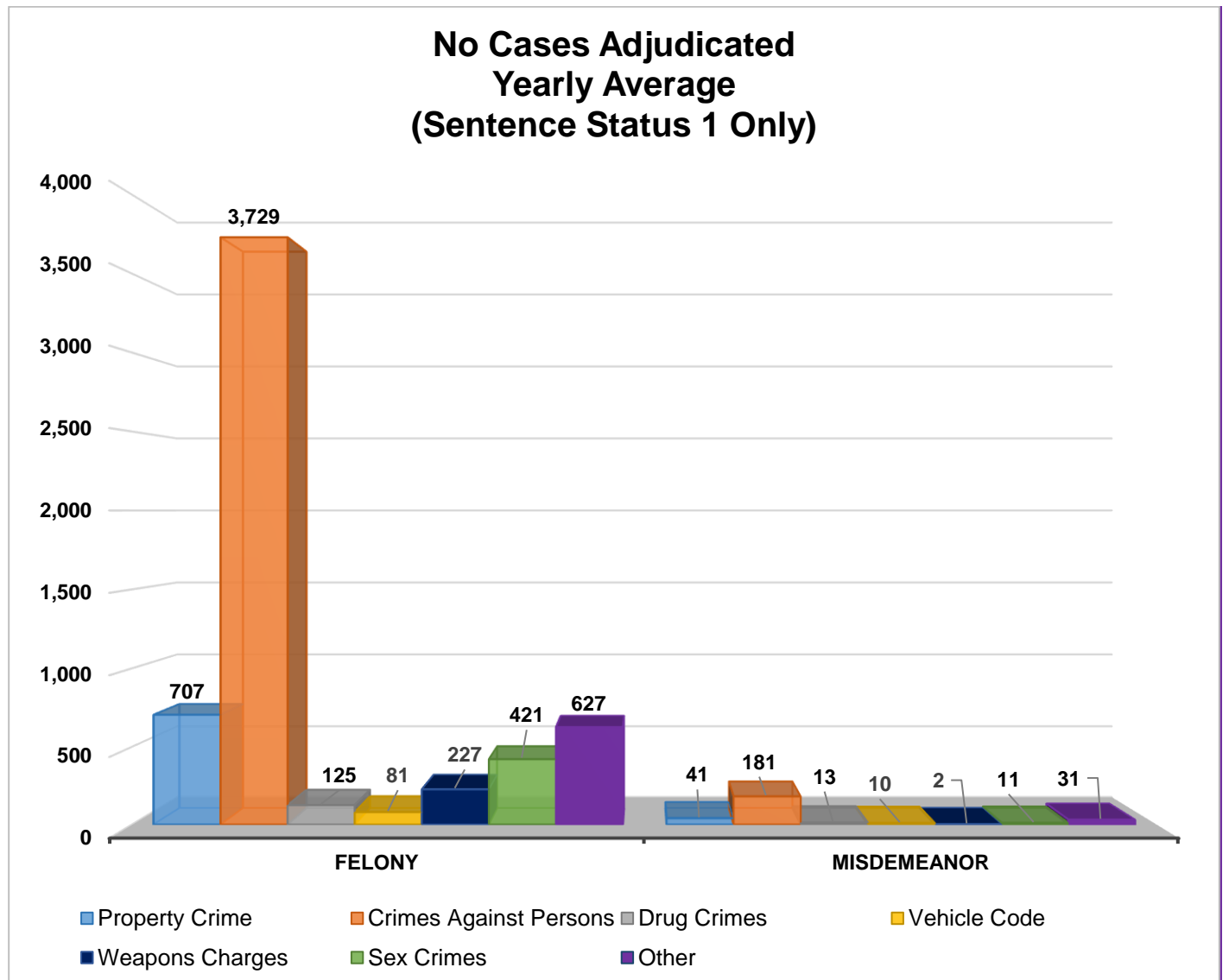
No CASES ADJUDICATED

The chart below provides a breakdown of inmates with an open case and have not been sentenced by the courts, along with court returnees.

No Cases Adjudicated (Sentence Status 1 only)

Arrest Category	Property Crimes	Crimes Against Persons	Drug Crimes	Vehicle Codes	Weapons Charges	Sex Crimes	Other	Total	Percentage of the Sentence Status 1 Population
Felony	707	3,729	125	81	227	421	627	5,917	95%
Misdemeanor	41	181	13	10	2	11	31	289	5%
Total	748	3,910	138	91	229	432	658	6,206	100%

**Information contained is based on a snapshot of the daily inmate population purged every Tuesday.*



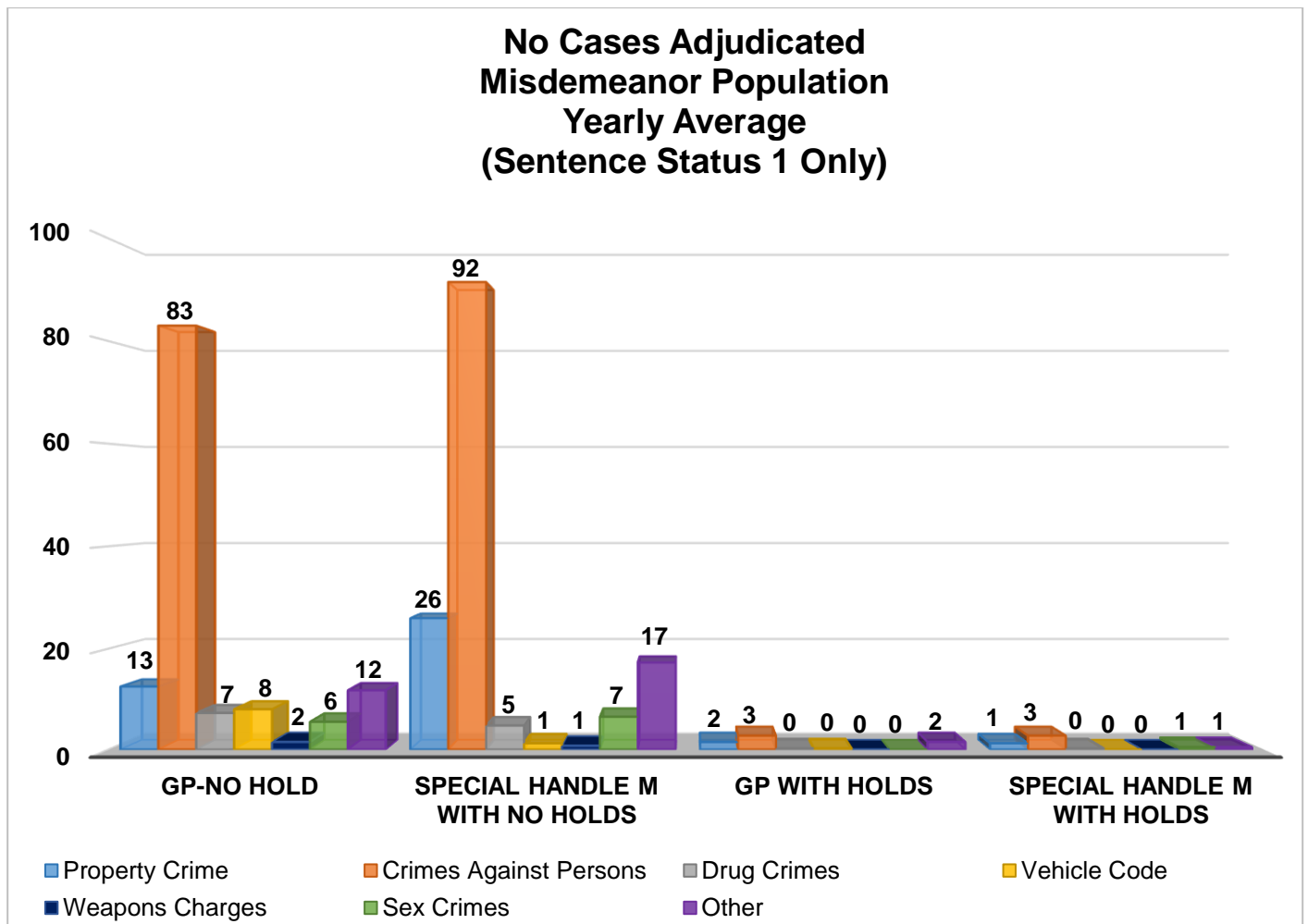
NO CASES ADJUDICATED MISDEMEANOR POPULATION

The chart below provides a breakdown for the inmate with open cases and have not been sentenced by the courts, along with court returnees, who are incarcerated for a misdemeanor and have not yet been convicted. "Holds" indicates the inmates are being held on a matter pending from an outside agency.

No Cases Adjudicated Misdemeanor Population (Sentence Status 1 only)

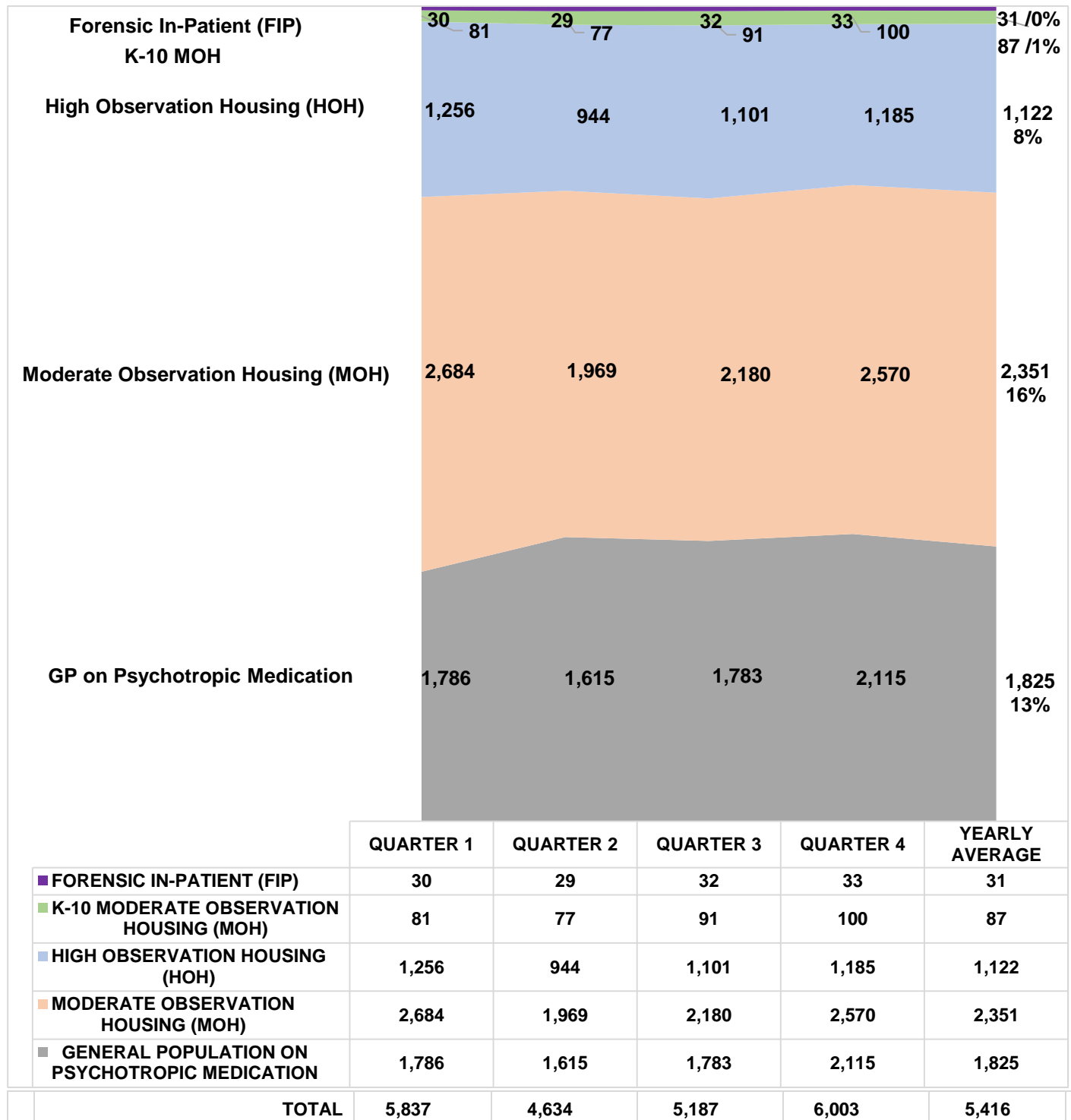
Arrest Category	Property Crime	Crimes Against Persons	Drug Crimes	Vehicle Code	Weapons Charges	Sex Crimes	Other	Total	Percentage of Sentence Status 1 Population
GP No Hold	13	83	7	8	2	6	12	131	45%
Special Handle M with No Holds	26	92	5	1	1	7	17	149	51%
GP with Holds	2	3	0	0	0	0	2	7	2%
Special Handle M with Holds	1	3	0	0	0	1	1	6	2%
Total	42	181	12	9	3	14	32	293	100%

**Information contained is based on a snapshot of the daily inmate population purged every Tuesday.*



MENTAL HEALTH INMATE POPULATION

In 2020, the average inmate population was 14,212, the mental health population accounted for 38 percent of this population. Currently, inmates identified with Mental Health needs requiring specialized housing moderate or high observation housing, account for 25 percent of the overall population. The remaining 13 percent of the total population have been treated and continue to receive psychotropic medication while housed in general population.



*Information contained is based on a snapshot of the daily inmate population purged every Tuesday.

MISDEMEANOR INCOMPETENT TO STAND TRIAL (MIST)

The Los Angeles County Jail houses inmates who are awaiting trial for misdemeanor charges who have been found to be incompetent to stand trial. This year the average number of inmates on MIST is 94.

Misdemeanor Incompetent to Stand Trial (MIST)														
Quarter 1			Quarter 2			Quarter 3			Quarter 4			Yearly Average		
Male	Female	Total	Male	Female	Total	Male	Female	Total	Male	Female	Total	Male	Female	Total
166	74	240	40	12	52	23	8	31	42	9	51	68	26	94

**Information contained is based on a snapshot of the daily inmate population purge every Tuesday.*

AMERICANS WITH DISABILITIES ACT (ADA)

ADA Housing is used to accommodate inmates with mobility limitations and/or physical disabilities. This year the average number of inmates requiring ADA is 371.

Americans With Disabilities Act (ADA)					
Disability	Quarter 1	Quarter 2	Quarter 3	Quarter 4	Yearly Average
Seeing Impaired – I	15	9	8	10	10
Hearing Impaired –D	13	6	6	9	9
Wheelchair –W	214	179	197	224	203
Mobility Impaired –U	154	126	151	163	149
Yearly Total	396	320	362	406	371

**Information contained is based on a snapshot of the daily inmate population purge every Tuesday.*

MEDICAL HOUSING

Medical Outpatient/ Specialty Housing (MOSH) is provided to inmates who require a level of medical treatment beyond that of stabilized medication distribution (pill call). The MOSH area in MCJ is also used to house inmates with mobility issues.

Additional Medical Housing					
Housing Area	Quarter 1	Quarter 2	Quarter 3	Quarter 4	Yearly Average
Correctional Treatment Center (CTC)	97	92	102	108	100
Los Angeles County Medical Center (LCMC)	21	20	25	32	24
*MCJ Medical/Clinic	429	340	367	414	388
Yearly Total	547	452	494	554	512

**Includes some ADA Housing.*

***Information is based on a snapshot of the daily inmate population purge every Tuesday.*

IN-CUSTODY PROGRAMS

LA COUNTY INMATE IN-CUSTODY PROGRAMS

The Los Angeles County Jail offers several in-custody programs. Programs vary from a number of in-custody work assignments, vocational job training, education, and life skill classes, as well as fire camp training and California Department of Corrections and Rehabilitation fire camp placement for AB109 inmates. Various programs awarded sentenced inmates additional time credits for their participation pursuant to the California Penal Code:

CREDIT EARNINGS

Program	Penal Code	Credit Earned	Type of Inmate
Sentenced GT/WT	4019 PC	Day-for-Day (1:1)	All Sentenced Inmates
Conservation	4019.1 PC	One and one half-for One (1.5:1)	All Sentenced Inmates
Fire Camp	4019.2 PC	Two-for-One (2:1)	AB109 Sentenced Inmates
Milestone	4019.4 PC	Up to 6 weeks per year	AB109 Sentenced Inmates

CONSERVATION WORK PROGRAM

The Conservation Work Program (CWP) allows inmates to complete their adjusted sentence while working in various job classifications, giving them the skills and work discipline necessary to increase their chances of success once released. Effective January 2015, all sentenced offenders, including Traditional County Sentenced (TCS) inmates are eligible to receive credits pursuant to Penal Code Section 4019.1. In 2020, approximately 1,993 offenders (14% of the population) participated in CWP.

CONSERVATION WORK PROGRAM (CWP)					
INMATE TYPE	Quarter 1	Quarter 2	Quarter 3	Quarter 4	Yearly Average
INMATES PARTICIPATED IN PROGRAMS	2,751	1,798	1,620	1,801	1,993

**Information contained is based on a snapshot of the daily inmate population purge every Tuesday.*

EDUCATION BASED INCARCERATION PROGRAMS

The Education Based Incarceration Program (EBI) uses traditional and nontraditional education which is designed to reduce incarceration by increasing the educational, civic, social, economic, and life skills of its participants. Offenders who are sentenced are eligible to receive credits pursuant to Penal Code 4019.4. In 2020, a total of **402** Milestone credits were awarded.

**The EBI school program was limited due to COVID-19.*

FIRE CAMP TRAINING PROGRAM

Fire Camp Training and California Institute for Women (CIW) training are aligned under the Conservation Work Program (CWP). This program is the first step of training before an inmate may participate in a State facilitated Fire Camp Program. Offenders who are sentenced under AB109 are eligible to receive credits pursuant to Penal Code 4019.1. The average number of inmates enrolled in the Fire Camp training program for 2020 was 39.

FIRE CAMP TRAINING CAMP					
HOUSING TYPE	Quarter 1	Quarter 2	Quarter 3	Quarter 4	Yearly Average
PDC FIRE CAMP TRAINING (MEN)	72	32	23	20	37
CIW FIRE TRAINING (WOMEN)	4	2	1	1	2
TOTAL	76	34	24	21	39

CALIFORNIA DEPARTMENT OF CORRECTIONS AND REHABILITATION (CDCR) **FIRE CAMP PROGRAM**

Once an inmate passes all necessary requirements in the Fire Camp Training Program located at PDC East facility, they are transferred to one of five state contracted fire camp sites where they will serve the remainder of their adjusted sentence. Offenders who are sentenced under AB109 are eligible to receive credits pursuant to Penal Code 4019.2. The average number of inmates assigned to CDCR Fire Camps for 2020 was 35.

CDCR FIRE CAMP					
FIRE CAMP LOCATION	Quarter 1	Quarter 2	Quarter 3	Quarter 4	Yearly Average
ACTON FIRE CAMP	15	6	4	2	7
FRANCISQUITO FIRE CAMP	13	8	5	3	7
HOLTON FIRE CAMP	23	11	3	1	9
JULIUS KLEIN FIRE CAMP	14	8	5	4	8
MALIBU WOMENS FIRE CAMP	3	5	3	3	4
TOTAL	68	38	20	13	35

BACK ON TRACK PROGRAM

The Back on Track (BOT) program began in February 2015 and is overseen by EBI staff. The program delivers education and comprehensive reentry services to offenders before and after a participant is released from jail. The program focuses on the critical time following an inmate's release from jail, by providing the seamless reentry services vital for success, including employment and life skill services. This program is available to inmates who have been sentenced under AB109 and are eligible to receive Milestone credits. They must be enrolled in the program for 18 months—divided into 9 months in-custody and 9 months out-of-custody.

BACK ON TRACK	Quarter 1	Quarter 2	Quarter 3	Quarter 4	Yearly Average
SOUTH BARRACK	67	39	29	8	36

IN-CUSTODY SUBSTANCE TREATMENT AND REENTRY TRANSITION

The jail based Substance Treatment and Reentry Transition (START) treatment services began at CRDF in February 2016 providing substance use disorder (SUD) treatment services to 50 women on any given day. In May of 2017, the program expanded to treat up to 90 women. In May 2017 services began at MCJ for up to 90 gay and transgender inmates and at PDC South facility treating up to 200 men in general population on any given day. In March 2018, services commenced at TTCF to treat up to 90 men with co-occurring mental health and SUD. Treatment services include screening, clinical assessment, group and individual counseling, case management services, medication assisted treatment, re-entry planning and care coordination with CTU and transportation to community based services post release.

In-Custody S.T.A.R.T (CRDF)	Quarter 1	Quarter 2*	Quarter 3*	Quarter 4*	Yearly Average
Enrolled	100	0	0	0	100
Completed	22	0	0	0	22
In-Custody S.T.A.R.T (MCJ)	Quarter 1	Quarter 2*	Quarter 3*	Quarter 4*	Yearly Average
Enrolled	66	0	0	0	66
Completed	14	0	0	0	14
In-Custody S.T.A.R.T (TTCF)	Quarter 1	Quarter 2*	Quarter 3*	Quarter 4*	Yearly Average
Enrolled	71	0	0	7	39
Completed	22	0	0	0	22
In-Custody S.T.A.R.T (PDC)	Quarter 1	Quarter 2*	Quarter 3*	Quarter 4*	Yearly Average
Enrolled	234	0	0	0	234
Completed	14	0	0	0	14

**No data available due to COVID-19*

ALTERNATIVES TO CUSTODY PROGRAMS

ALTERNATIVES TO CUSTODY PROGRAMS

The Community Transition Unit (CTU), the Community Based Alternatives to Custody Unit (CBAC), and the Compliance Team work together by utilizing a variety of alternatives to custody programming options in an effort to enhance an inmate's chance of success upon release. These programs are conducted in collaboration with local agencies including Community and Faith Based Organizations, Department of Mental Health (DMH), Department of Public Health (DPH), and other organizations. It is the Department's goal to program inmates from intake through re-entry into the community. With this approach, we hope to increase public safety and reduce the rate of recidivism.

Supported by release planning overseen by the CTU, and in partnership with contracted services, inmates are provided re-entry assistance through linkages to services that are initiated while they are in-custody and continued upon release. Through the Alternatives to Custody (ATC) programs, qualifying inmates are afforded the opportunity to complete the remaining portion of their sentence in a community treatment program. Inmates who do not qualify for ATC due to security or other reasons are referred to community providers for re-entry assistance.

The ATC programs include:

SUBSTANCE TREATMENT AND REENTRY TRANSITION

The Substance Treatment and Re-entry Transition (START) program is a Department Public Health, Substance Abuse Prevention Control (SAPC) funded program that places eligible male and female inmates into residential substance use disorder (SUD) treatment programs on electronic GPS monitoring as an alternative to custody (ATC) program.

FEMALE PROGRAMS

The Female Programs are funded through community grants. They work directly with various residential programs approved by LASD, but not affiliated with the START program, and they offer treatment beds for inmates under the ATC program. Several programs cater to specific clientele who fit a specified demographic in regards to age and gender.

VETERAN'S ADMINISTRATION

The Veteran's Administration (VA) funds SUD residential treatment, under the ATC program for inmates who are confirmed to be a veteran entitled to VA Benefits. The treatment programs are approved by the VA and are vetted by LASD.

TRANSITIONAL CASE MANAGEMENT PROGRAM

The Transitional Case Management Program (TCM) is a Department of Public Health (DPH) funded program, whereby DPH employees refer Human Immunodeficiency Virus (HIV) infected inmates to a residential substance use disorder (SUD) treatment facility, approved and vetted by LASD, under the ATC program.

TARZANA TREATMENT CENTER DMH/SUD PROGRAM

Tarzana Treatment Center, in partnership with LASD, DHS Correctional Health, and the Department of Mental Health, has made available 40 total beds for inmates with a co-occurring mild to moderate mental health diagnosis, and a SUD. Inmates are identified by DHS Jail Linkage staff and referred to Tarzana treatment for assessment and acceptance. Inmates must still qualify for ATC programming through a validated risk assessment and criminal history review.

MENTAL HEALTH DIVERSION – NORMANDIE VILLAGE/GATEWAY

Normandie Village treats eligible male N3 inmates with mental illness who are a low security risk, and in a stabilized condition. They are selected to complete the remaining 60-180 days of their sentence in a 42 bed community-based Institution for Mental Disease (IMD) step-down facility. For acceptance into these programs, inmates must volunteer to participate in services and meet the following criteria:

1. Be 18-54 years of age
2. Must have a primary Axis I major psychiatric diagnosis
3. May have a secondary Axis I diagnosis of substance abuse
4. Must not be a registered sex offender
5. Must not have a fire setting history
6. Must be ambulatory
7. Must not have a serious or life-threatening medical problem
8. Must not require treatment in a locked setting
9. Must have applied for Supplemental Security Income (SSI)

Program Yearly Statistics	Enrolled				Completed				Returned to Custody				Absconded			
	Q1	Q2	Q3	Q4	Q1	Q2	Q3	Q4	Q1	Q2	Q3	Q4	Q1	Q2	Q3	Q4
S.T.A.R.T.	0	0	5	3	0	0	0	4	0	0	0	1	0	0	0	0
Female Programs	0	0	0	0	0	0	0	0	0	0	0	0	0	0	0	0
Veterans	0	0	0	0	0	0	0	0	0	0	0	0	0	0	0	0
Transitional Case Management	0	0	0	0	0	0	0	0	0	0	0	0	0	0	0	0
Mental Health Programs	0	0	0	0	0	0	0	0	0	0	0	0	0	0	0	0
Quarterly Total	0	0	0	0	0	0	0	0	0	0	0	0	0	0	0	0
Annually Total	8				4				1				0			

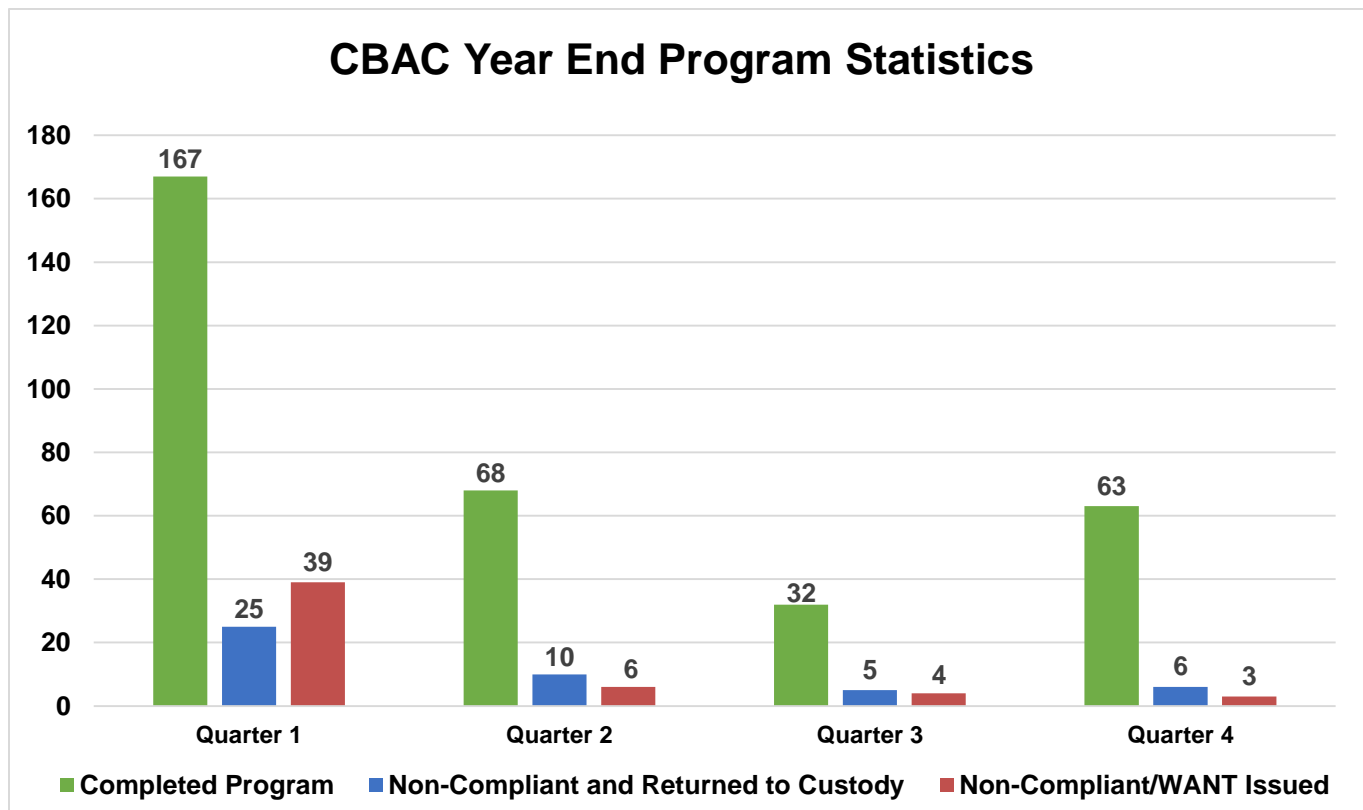
**Referrals and placements to the S.T.A.R.T. community program are on hold pending execution of a new memorandum of agreement.*

COMMUNITY BASED ALTERNATIVES TO CUSTODY

The PMB's Community Based Alternatives to Custody (CBAC) unit identifies low risk sentenced offenders within the jail population who qualify to finish their remaining sentence in an out-of-custody alternative environment. Although these individuals are outside of traditional custody, they are still under the jurisdiction of the Department.

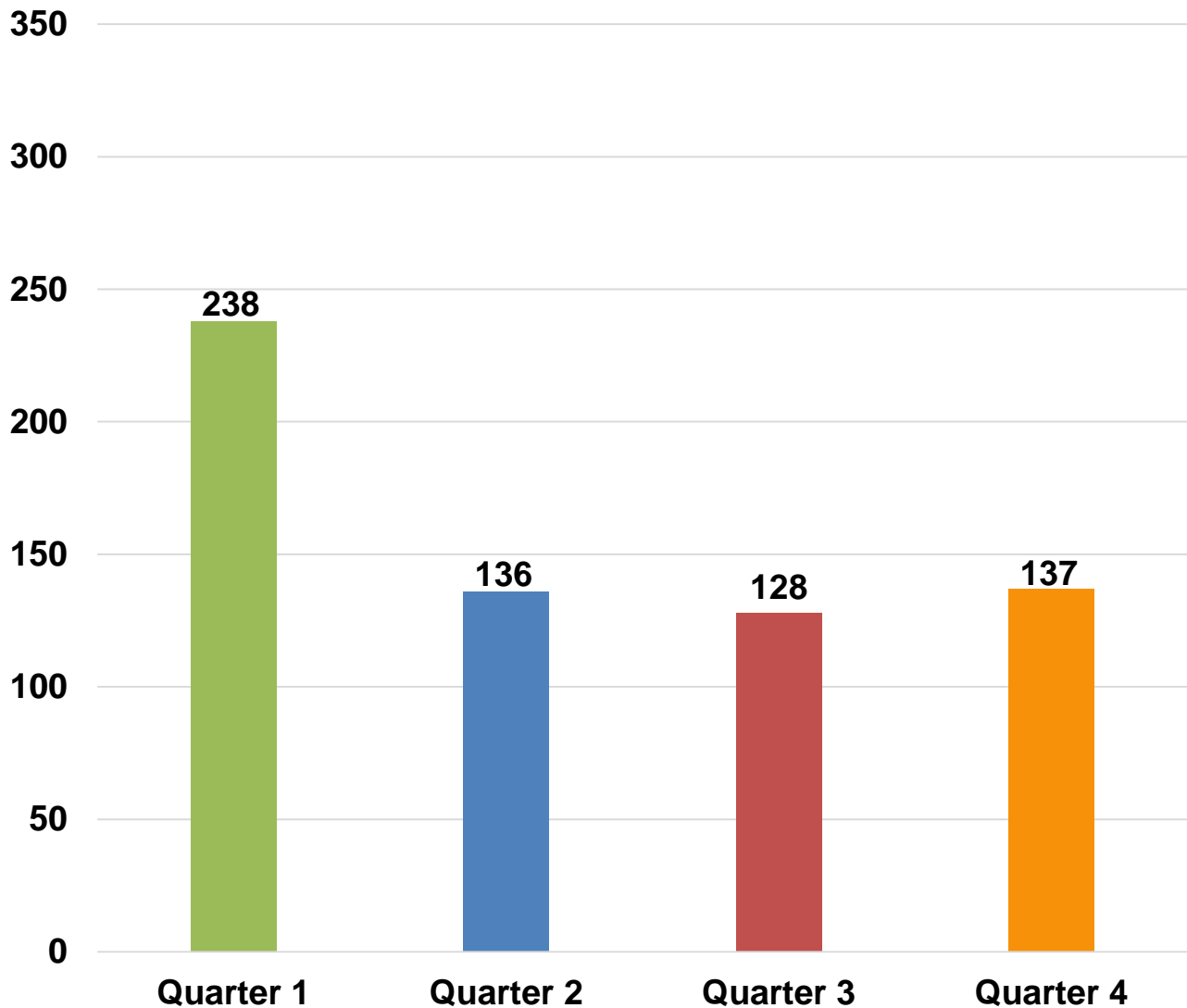
CBAC YEARLY PLACEMENT															
PROGRAM	Quarter 1				Quarter 2				Quarter 3				Quarter 4		
	M	F	TOTAL		M	F	TOTAL		M	F	TOTAL		M	F	TOTAL
ELECTRONIC MONITORING	70	13	83		24	3	27		13	6	19		18	3	21
WEEKENDER WORK	92	14	106		32	3	35		14	4	18		21	0	21
WORK RELEASE	62	23	85		20	5	25		19	0	19		25	0	25
TOTAL	224	50	274		76	11	87		46	10	56		64	3	67

The graph below depicts the total number of offenders who successfully completed the remainder of their sentence on a CBAC program. It also shows the number of offenders who failed to complete the program and with the efforts of the PMB Compliance Unit, were returned back to finish their sentence and those who failed to complete the program and were not returned back to custody.



LA COUNTY ALTERNATIVES TO CUSTODY INMATE POPULATION

**2020 Yearly
Los Angeles County Alternative to Custody Inmate Count**



2020 Yearly ATC ADIP
160

Includes Community Based Alternatives to Custody (CBAC), Fire Camp, and inmate station workers.

RE - ENTRY ASSISTANCE

COMMUNITY RE-ENTRY AND RESOURCE CENTER

The information below represents recently released inmates and inquiries and/or contacts made by members of the general public who have been assisted with services at the Community Re-entry and Resource Center (CRRC) for 2020:

Inquiry Demographic Population	Quarter 1	Quarter 2	Quarter 3	Quarter 4	Total	Average
General Release	862	438	808	838	2,946	737
General Public	274	178	359	272	1,083	271
Alternatives to Custody Program	2	0	0	0	2	1
Coordinated Release	365	172	156	220	913	228
Work Release	3	0	0	2	5	1
Phone Referral	0	0	2	0	2	1
Total	1,506	788	1,325	1,332	4,951	1,238

Inquiry Demographic Gender	Quarter 1	Quarter 2	Quarter 3	Quarter 4	Total	Average
Male	1,082	710	956	980	3,728	932
Female	451	126	406	376	1,359	340
Total	1,533	836	1,362	1,356	5,087	1,272

CTU personnel visit the Inmate Reception Center release area to educate and remind inmates waiting to go home about services available at the CRRC. Walks of the release area are performed every 90 minutes.

	Quarter 1	Quarter 2	Quarter 3	Quarter 4	Total	Average
Number of 90 Minute Contact Walks	140	185	168	113	606	152
Number of Inmates Contacted	2,719	1,621	2,131	1,620	8,091	2,023
Number of Flyers Distributed	2,336	989	969	638	4,932	1,233

**Statistical table provided by CTU.*

CTU COORDINATED RELEASES TO VARIOUS PROGRAMS

The final 90 days leading to an inmate's release from custody are the most critical in ensuring a successful transition from Custody to Community Based Organization (CBO) Treatment Centers. During the time leading up to their release, inmates are interviewed several times by the CBO Staff and members of the Community Transition Unit to ensure that they are matched up with a suitable treatment provider.

The coordinated release process helps to create a trust between law enforcement, inmate participants, and CBO's. The CTU's ultimate goal is to provide a successful recovery and re-entry into the community and to ultimately decrease recidivism.

	Quarter 1	Quarter 2	Quarter 3	Quarter 4	Total	Average
Coordinated Releases	480	372	406	523	1,781	445

CTU VITAL RECORDS

Through the Vital Records Program, Department staff members have been deputized by the County Registrar-Recorder to facilitate birth certificate applications for inmates born in Los Angeles County, who have requested a certified copy. The fee of \$28 for certified copies of birth certificates is funded by the Inmate Welfare Fund.

All inmates in custody are eligible to apply for a replacement California Identification Card. The issued ID's are provided to the inmates upon their release. The inmates must still report to the California Department of Motor Vehicles (DMV) to obtain a driver license following their release.

Records Processed	Quarter 1	Quarter 2	Quarter 3	Quarter 4	Total	Average
DMV - California Identification Card	810	462	788	823	2,883	721
RECORDS – Birth Certificate	1,034	421	574	514	2,543	636
Total	1,844	883	1,362	1,337	5,426	1,357

Records Issued	Quarter 1	Quarter 2	Quarter 3	Quarter 4	Total	Average
DMV - California Identification Card	360	362	399	390	1,511	378
RECORDS – Birth Certificate	1,227	607	40	386	2,260	565
Total	1,587	969	439	776	3,771	943